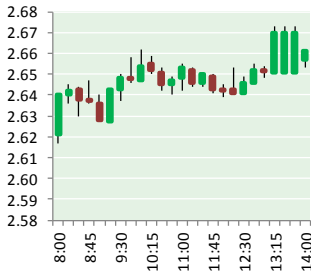


NATURAL GAS



DECEMBER 26, 2017

Prior Day's NYMEX Jan-18 Contract (CT)



NYMEX NG Futures

Month	Close	Change
Jan-18	2.667	0.069
Feb-18	2.658	0.066
Mar-18	2.622	0.063
Apr-18	2.560	0.050
May-18	2.572	0.044
Jun-18	2.615	0.041
Jul-18	2.657	0.037
Aug-18	2.661	0.038
Sep-18	2.642	0.038
Oct-18	2.668	0.037
Nov-18	2.731	0.035
Dec-18	2.862	0.031
Jan-19	2.956	0.029
Feb-19	2.945	0.028
Mar-19	2.897	0.030
Apr-19	2.638	0.026
May-19	2.622	0.026
Jun-19	2.652	0.026
Jul-19	2.684	0.026
Aug-19	2.685	0.026
Sep-19	2.671	0.026
Oct-19	2.697	0.026
Nov-19	2.746	0.026
Dec-19	2.889	0.026
1YR Strip	2.660	0.046
2018	2.660	0.046
5YR Strip	2.799	0.028

IN THE NEWS

Alaska Approves Expansion Plan for Point Thomson Gas Field — US News reported: JUNEAU, Alaska (AP) — The state has approved ExxonMobil's plan to expand a gas field in far northern Alaska, ending months of negotiations after a previous plan was rejected. Gov. Bill Walker's administration gave approval on Friday for the project that would expand development of the

- **Alaska Approves Expansion Plan for Point Thomson Gas Field**
- **SoCal Gas cited for 'public nuisance' over new leak at Aliso Canyon natural gas facility**

Point Thomson gas field east of Prudhoe Bay, Alaska's Energy Desk reported . The field currently produces a diesel-like fluid, but it's located on a natural gas reserve that could play a crucial role for the state's liquefied natural gas project. In a statement, Walker said the expansion project would add momentum to the pipeline project as it would demonstrate the commitment to move the gas. ExxonMobil and the state have been battling over the field's development for years, but they reached a settlement in 2012. The settlement established the initial plan for the field, which came online last year. For more visit US News.com or click <http://bit.ly/2pDsHsA>

SoCal Gas cited for 'public nuisance' over new leak at Aliso Canyon natural gas facility — LA Times reported: Air quality officials on Friday cited Southern California Gas Co. for a 50-minute gas leak at its Aliso Canyon storage facility earlier this week, accusing the utility of causing a public nuisance by exposing nearby residents to foul odors. The South Coast Air Quality Management District said it received 15 odor complaints from residents in the Porter Ranch neighborhood of Los Angeles after the leak began at 4:55 p.m. Monday. A SoCal Gas methane monitor at the fence line of the facility measured concentrations of up to 66 parts per million — more than 30 times the typical level of 2 ppm, according to the air district. That prompted the air district on Thursday to require the company to provide all of its monitoring data from the day of the leak. For more visit latimes.com or click <http://lat.ms/2Dg76IB>

12 MONTH CANDLESTICK (WEEKLY)



Prompt Natural Gas (NG) Daily Sentiment

BEARISH



RESISTANCE
2.69 & 2.73
SUPPORT
2.60 & 2.54

Trading Summary

NATURAL GAS

Futures	Close	Change
NG	2.667	0.069
Volume	275,860	(275,860)
Open Int.	1,501,062	(2,735)

CRUDE AND GASOLINE

Futures	Close	Change
Crude	58.47	0.11
RBOB	1.7623	0.0147
Crude/NG	22.00	(0.52)

METALS

Futures	Close	Change
Gold	1,275.40	

EQUITIES

Exchange	Close	Change
DOW	24,754.06	(28.23)
S&P 500	2,683.34	(1.23)

CURRENCY

Currency	Close	Change
EUR/USD	1.1870	(0.0001)
USD/CND	1.2715	(0.0008)

Contact Us



Mansfield Energy Corp
1025 Airport Pkwy
Gainesville, GA 30501

www.mansfield.energy
info@mansfieldoil.com

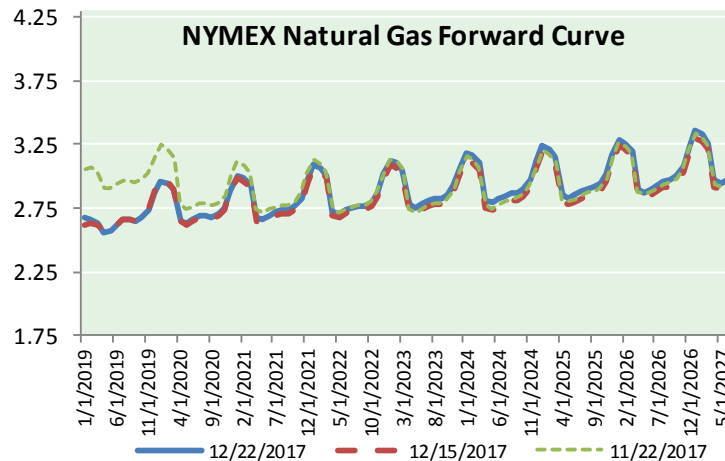
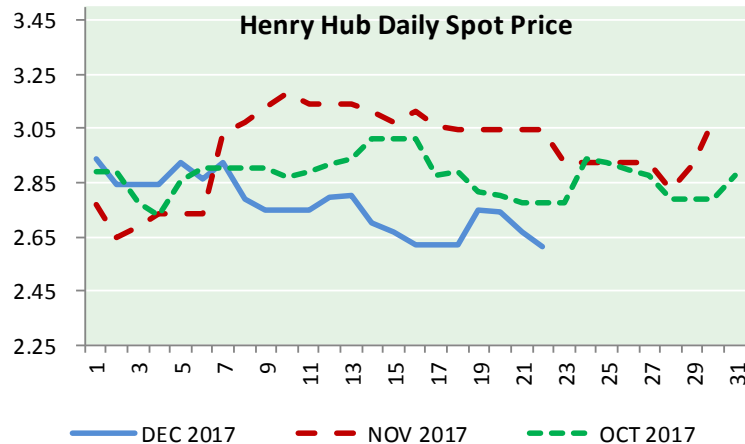
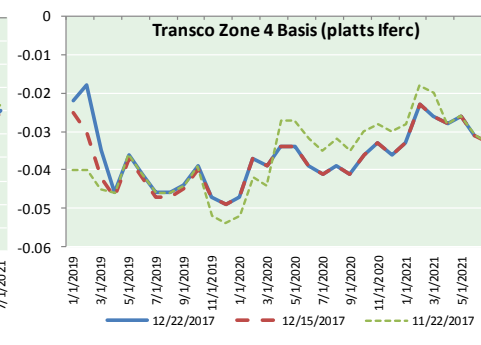
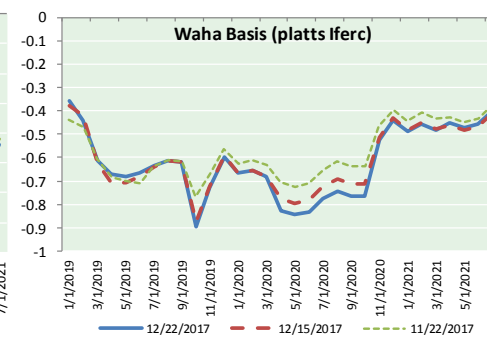
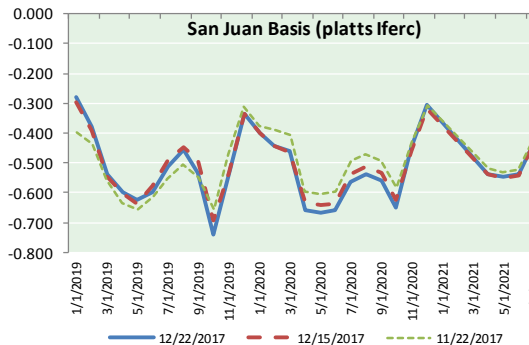
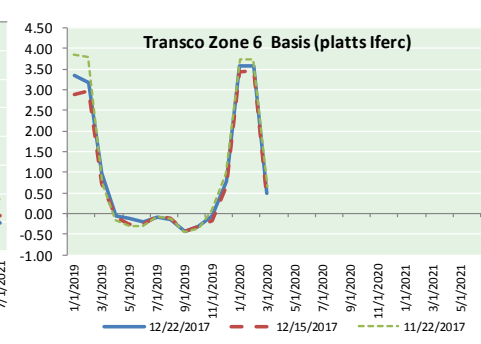
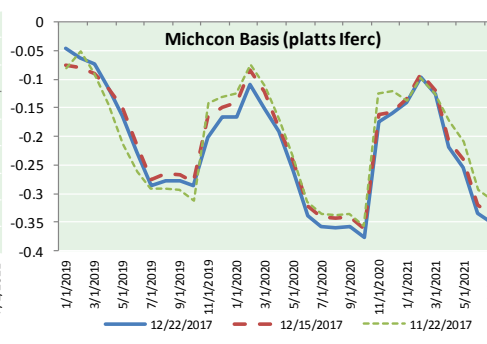
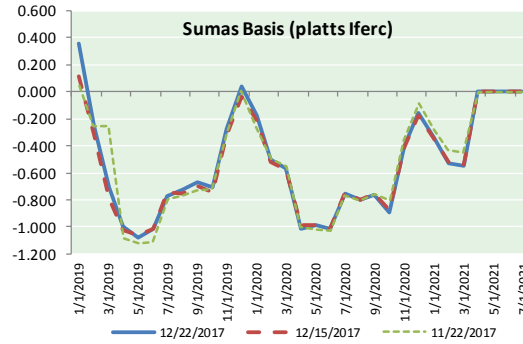
Phone: (800) 695-6626



NATURAL GAS NEWS



NATURAL GAS BASIS FUTURES, HENRY HUB SPOT PRICES, AND FORWARD CURVE



NYMEX WTI Delivery
Month Average (\$/bbl)
(Excluding Weekends and Holidays)

Month: December 2017

Day	Price	Day	Price
1	58.36	16	
2		17	
3		18	57.16
4	57.47	19	57.46
5	57.62	20	58.09
6	55.96	21	58.36
7	56.69	22	58.47
8	57.36	23	
9		24	
10		25	
11	57.99	26	
12	57.14	27	
13	56.60	28	
14	57.04	29	
15	57.30	30	
		31	

Average (Dec) 57.4419
(through 12/22/2017)

Average (Nov) 56.6629

Average (Oct) 51.5945

CME NG Option Prices

ATM Call

Month	Strike	Close	Imp	Vol
Jan-18				
Feb-18	2.700	0.181		58.1
Mar-18				
Apr-18				
May-18				

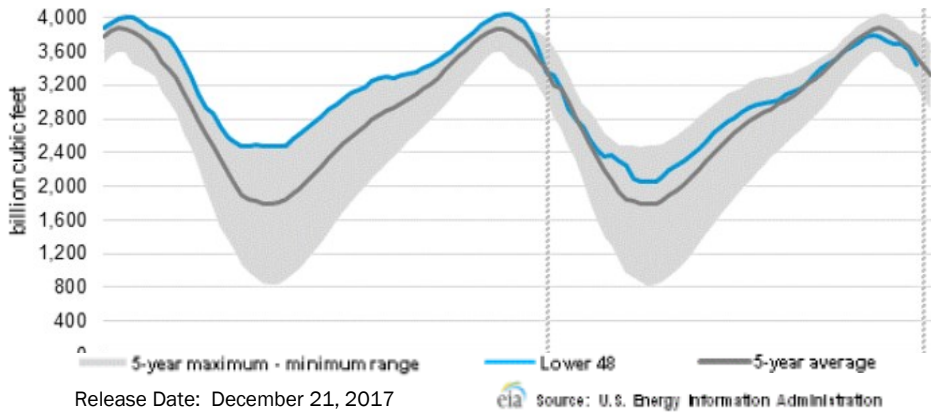
CME NG Option Prices

ATM Put

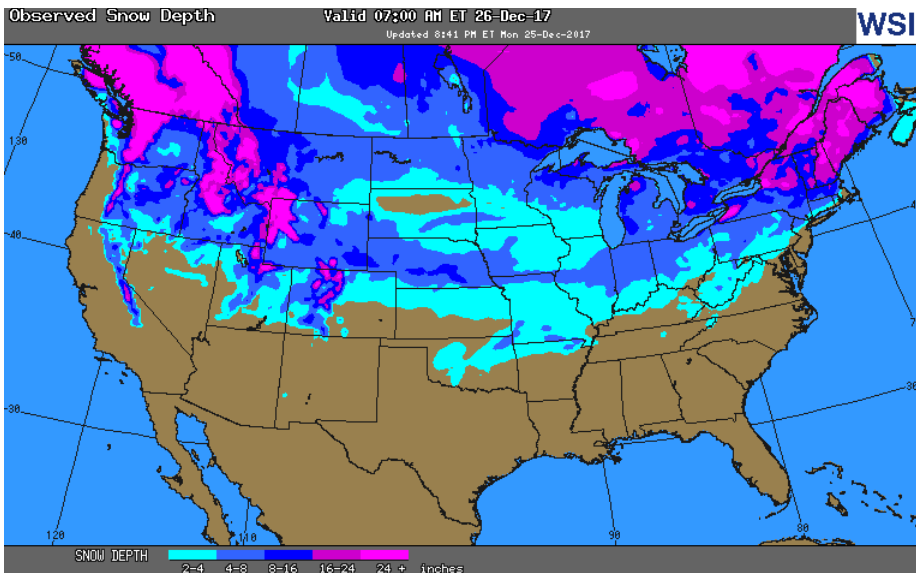
Month	Strike	Close	Imp	Vol
Jan-18				
Feb-18	2.700	0.133		41.2
Mar-18				
Apr-18				
May-18				

NATURAL GAS NEWS

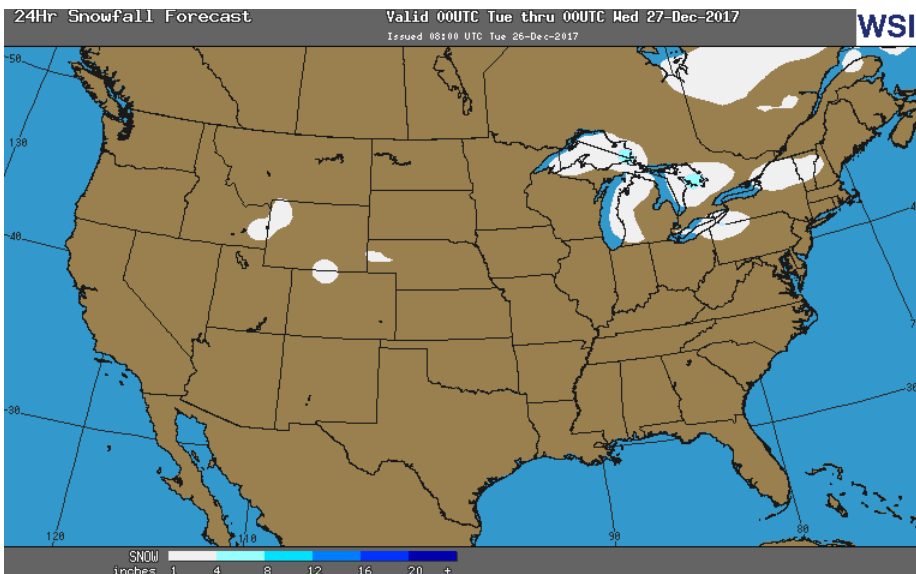
WEEKLY GAS IN UNDERGROUND STORAGE WITH 5-YR RANGE



OBSERVED SNOW DEPTH



24 HOUR SNOWFALL FORECAST



Rig Count

Report Date: December 22, 2017

	Total	Change
US -	931	+1
CN -	210	(28)

EIA Weekly NG Storage

Actual and Surveys for

December 15, 2017

Released December 21, 2017

- PIRA — (172)
- ARM — (175)
- Reuters — (170)

EIA ACTUAL — (182)

Total Working Gas In Storage

3,444 BCF

- (182) BCF (LAST WEEK)
- (183) BCF (LAST YEAR)
- (84) BCF (5-YR AVG)

U.S. Natural Gas Supply

Gas Week 12/14 - 12/20

Average daily values (BCF/d):

Last Year (BCF/d)

Dry Production — +69.1

Total Supply — +75.9

Last Week (BCF/d)

Dry Production — +84.8

Total Supply — +82.0

[NEXT REPORT ON JAN 4]

U.S. Natural Gas Demand

Gas Week 12/14 - 12/20

Average daily values (BCF/d):

Last Year (BCF/d)

Power — +27.3

Total Demand — +116.6

Last Week (BCF/d)

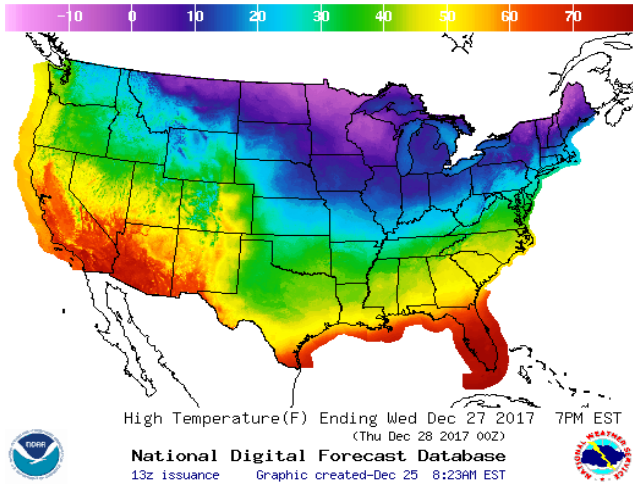
Power — +27.6

Total Demand — +107.2

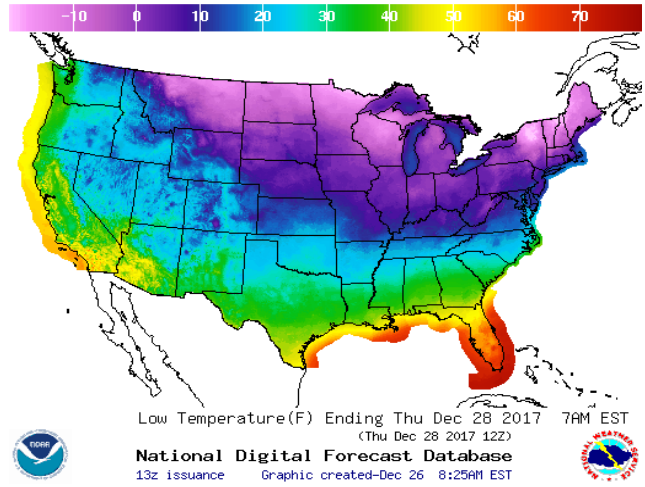
[NEXT REPORT ON JAN 4]

WEATHER – HIGH / LOW TEMPERATURE TOMORROW

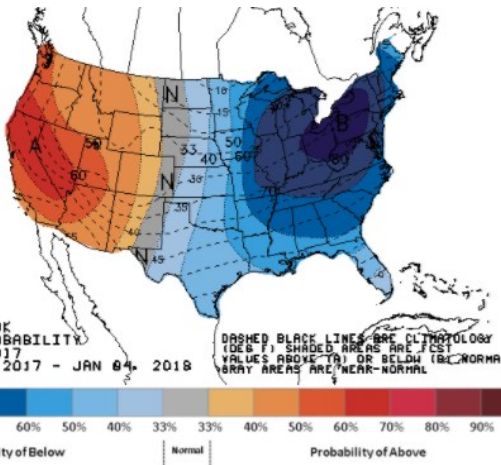
HIGH Temperature



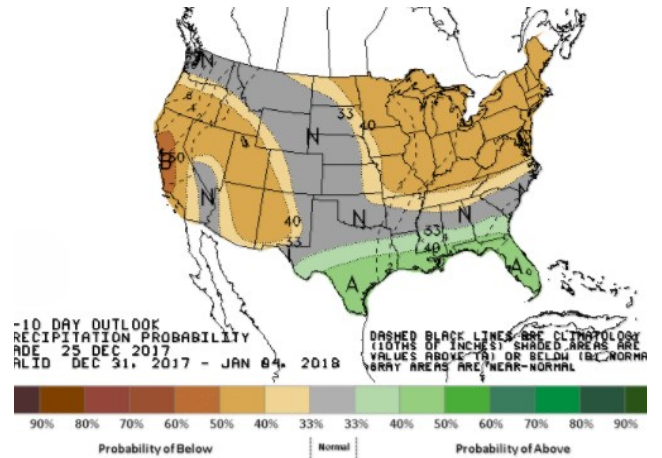
LOW Temperature



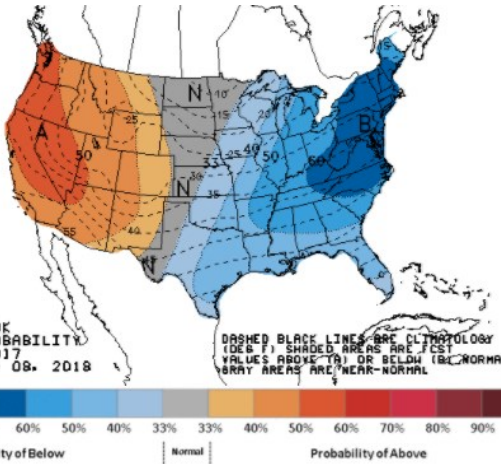
WEATHER – 6 TO 10 DAY OUTLOOK – NOAA
Temperature



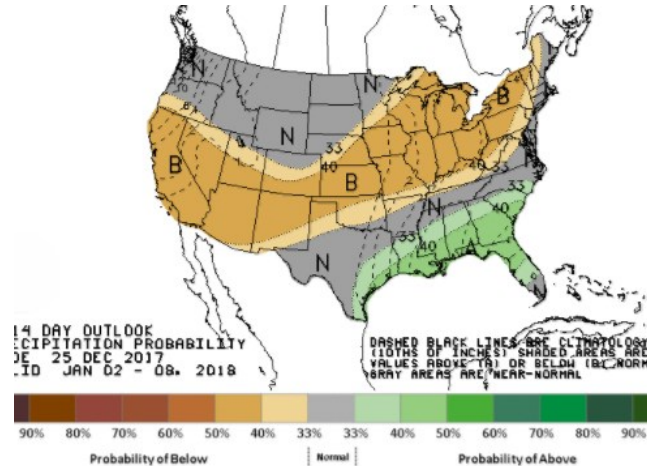
Precipitation



WEATHER – 8 TO 14 DAY OUTLOOK – NOAA
Temperature

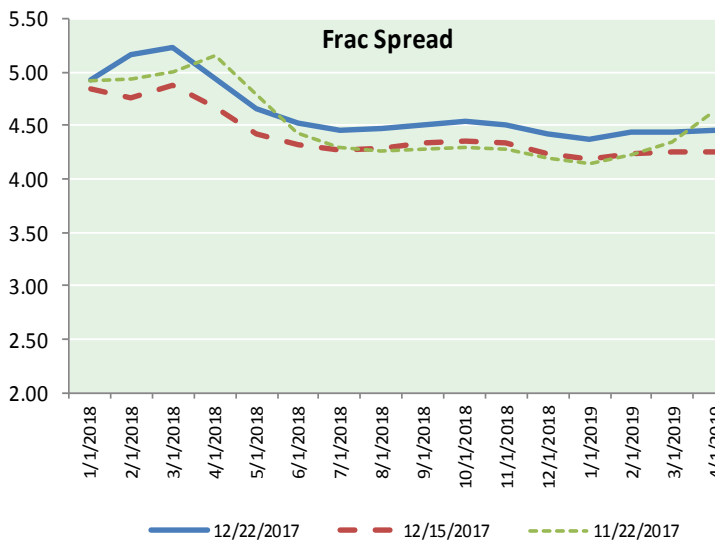
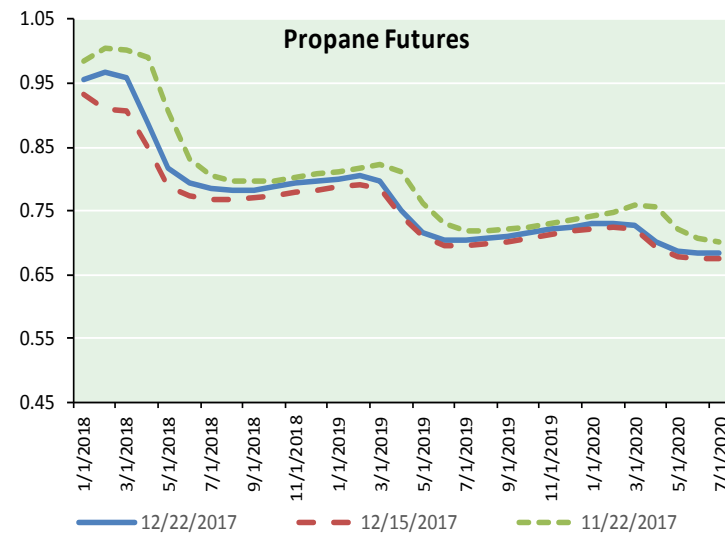
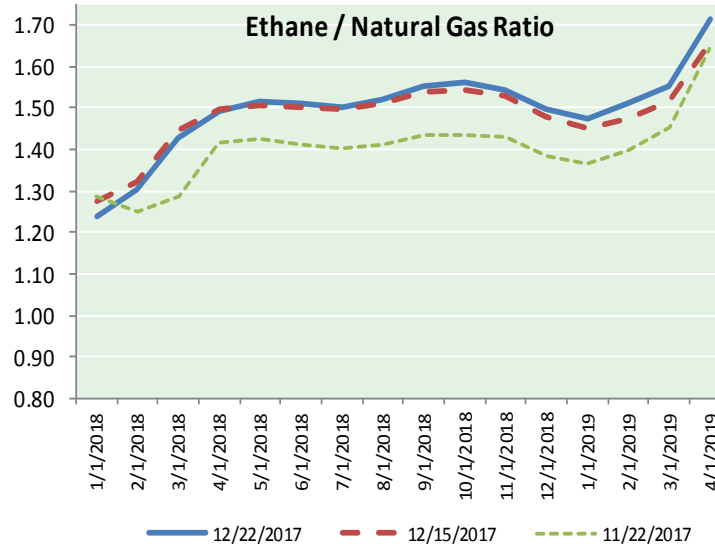
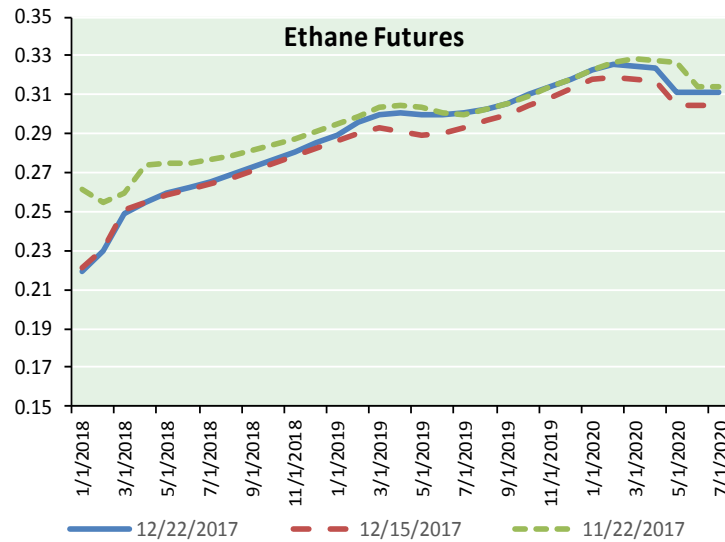


Precipitation





ETHANE FUTURES, NG/ETHANE RATIO, PROPANE FUTURES, AND THE FRAC SPREAD



CME Future Prices

Ethane (C2)

Non-LDH— Mont Belvieu

(cents/gallon)		
Month	Close	Change
Jan-18	0.220	0.001
Feb-18	0.230	0.003
Mar-18	0.249	0.002
Apr-18	0.254	0.001
May-18	0.259	0.002
Jun-18	0.263	0.001
Jul-18	0.266	0.001
Aug-18	0.269	0.002
Sep-18	0.273	0.002
Oct-18	0.277	0.002
Nov-18	0.281	0.002
Dec-18	0.285	0.002

1YR Strip 0.260 0.002

CME Future Prices

Propane (C3)

Non-LDH— Mont Belvieu

(cents/gallon)		
Month	Close	Change
Jan-18	0.956	0.001
Feb-18	0.968	0.003
Mar-18	0.959	0.002
Apr-18	0.886	0.000
May-18	0.816	(0.002)
Jun-18	0.794	(0.002)
Jul-18	0.785	(0.003)
Aug-18	0.783	(0.004)
Sep-18	0.784	(0.004)
Oct-18	0.789	(0.004)
Nov-18	0.793	(0.004)
Dec-18	0.796	(0.004)

1YR Strip 0.842 (0.002)

NATURAL GAS NEWS



Prompt WTI (CL) Crude

Daily Sentiment

BULLISH



RESISTANCE

56.94 & 57.17

SUPPORT

56.25 & 55.79

FOLLOW US ON TWITTER:



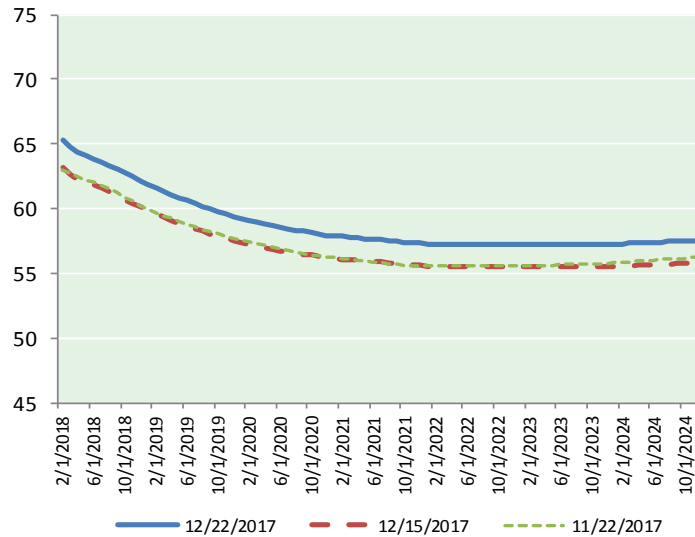
@MPG_NatGasNews

NYMEX Brent (BZ)

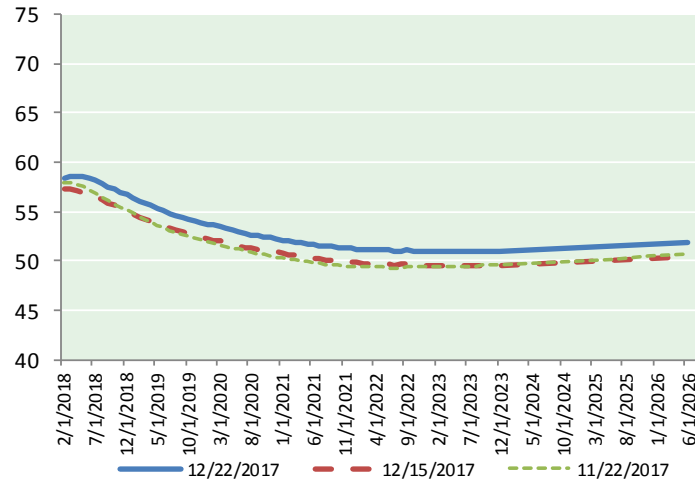
Futures

Month	Close	Change
Feb-18	65.25	0.35
Mar-18	64.73	0.30
Apr-18	64.33	0.29
May-18	64.06	0.27
Jun-18	63.85	0.27
Jul-18	63.63	0.28
Aug-18	63.36	0.29
Sep-18	63.08	0.30
Oct-18	62.78	0.31
Nov-18	62.48	0.31
Dec-18	62.16	0.32
Jan-19	61.91	0.32
Feb-19	61.64	0.33
Mar-19	61.36	0.34
Apr-19	61.11	0.34
May-19	60.86	0.34
Jun-19	60.62	0.34
Jul-19	60.42	0.34
Aug-19	60.20	0.33
Sep-19	60.00	0.33
Oct-19	59.82	0.33
Nov-19	59.62	0.33
Dec-19	59.40	0.32
Jan-20	59.26	0.32
1YR Strip	63.47	0.30
2018	63.61	0.30
5YR Strip	59.32	0.34

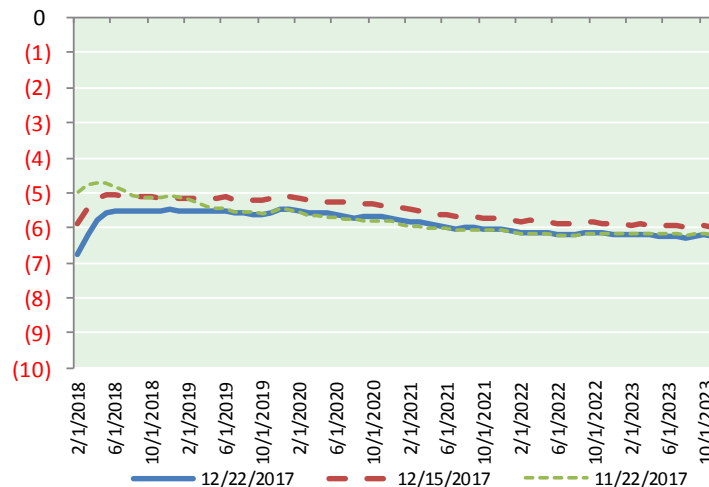
BRENT CRUDE FORWARD CURVE



WTI CRUDE FORWARD CURVE



WTI-BRENT SPREAD



FRAC Spread

Specifications

Ethane :	42%	66,500 btu/g
Propane:	28%	90,830 btu/g
Butane:	11%	102,916 btu/g
Iso-Butane:	6%	98,935 btu/g
Natural Gasoline:	13%	115,021 btu/g

Prompt NGL Futures

(\$/gallon)

	Jan-18	Close	Change
Butane	1.027	1.027	0.007
Iso-Butane	1.032	1.032	0.007
Nat Gasoline	1.355	1.355	0.008

NYMEX WTI (CL) Futures

Month	Close	Change
Feb-18	58.47	0.11
Mar-18	58.54	0.14
Apr-18	58.54	0.15
May-18	58.48	0.18
Jun-18	58.34	0.21
Jul-18	58.12	0.24
Aug-18	57.84	0.27
Sep-18	57.55	0.30
Oct-18	57.25	0.31
Nov-18	56.97	0.32
Dec-18	56.70	0.32
Jan-19	56.41	0.33
Feb-19	56.12	0.34
Mar-19	55.84	0.34
Apr-19	55.58	0.34
May-19	55.33	0.34
Jun-19	55.08	0.32
Jul-19	54.83	0.32
Aug-19	54.60	0.31
Sep-19	54.39	0.30
Oct-19	54.21	0.29
Nov-19	54.06	0.27
Dec-19	53.94	0.27
Jan-20	53.77	0.27
1YR Strip	57.77	0.24
2018	57.89	0.23
5YR Strip	53.52	0.29