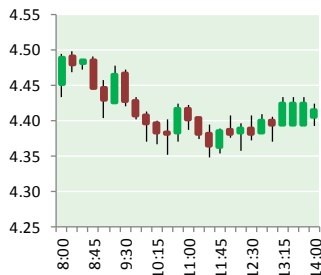


# NATURAL GAS



DECEMBER 12, 2018

## Prior Day's NYMEX Jan-19 Contract (CT)



## NYMEX NG Futures

Month	Close	Change
Jan-19	4.407	(0.138)
Feb-19	4.258	(0.102)
Mar-19	4.041	(0.095)
Apr-19	3.003	0.026
May-19	2.889	0.027
Jun-19	2.904	0.028
Jul-19	2.930	0.029
Aug-19	2.925	0.027
Sep-19	2.895	0.024
Oct-19	2.919	0.026
Nov-19	2.961	0.026
Dec-19	3.115	0.028
Jan-20	3.227	0.026
Feb-20	3.165	0.023
Mar-20	2.939	0.007
Apr-20	2.535	0.000
May-20	2.482	0.000
Jun-20	2.522	0.000
Jul-20	2.572	0.000
Aug-20	2.575	0.000
Sep-20	2.548	0.000
Oct-20	2.561	0.000
Nov-20	2.623	(0.001)
Dec-20	2.807	(0.005)
1YR Strip	3.271	(0.008)
2018 #DIV/O!	#DIV/O!	#DIV/O!
5YR Strip	2.765	(0.015)

## IN THE NEWS

[A Natural Gas Pipeline Explosion in British Columbia Spikes Prices in Portland and Raises Questions About Oregon's Energy Future](#)—Willamette Week reported: In October, a natural gas pipeline ruptured outside a British Columbia town called Prince George, sending a fireball skyward. The aftershocks from that blast are still being felt in Portland. Last week, the Oregon Public Utility

- **A Natural Gas Pipeline Explosion in British Columbia Spikes Prices in Portland and Raises Questions About Oregon's Energy Future**
- **Saulsbury Makes Strides on Processing Plants in U.S. Hot Spots for Natural Gas**

Commission held a special meeting to consider the implications of the rupture, which extend far beyond short-term price spikes. "We haven't expanded our capacity to move gas since the early 1990s," says Ed Finklea, who represents large industrial customers. "If this region is really serious about switching to renewable energy, gas has to be really reliable." For more on this story visit [week.com](http://week.com) or click <https://bit.ly/2ryR7S9>

[Saulsbury Makes Strides on Processing Plants in U.S. Hot Spots for Natural Gas](#)—Marketwatch reported: Saulsbury Industries (Odessa, Texas) is at the forefront of one of the fastest-growing sectors of the domestic energy market: natural gas production. The engineering, procurement and construction (EPC) company is at work on a slew of projects in the Permian Basin, SCOOP/STACK plays and other busy areas for gas extraction and processing. Industrial Info is tracking more than \$3 billion in active projects involving Saulsbury, with more than 33% of the total investment value (TIV) attributed to projects that already have begun construction. Within this article: Details on some of the highest-valued projects involving Saulsbury, including those in the Permian Basin and SCOOP/STACK plays from companies such as Apache Corporation, Vaquero Midstream and Cardinal Midstream LLC. For more on this story visit [marketwatch.com](http://marketwatch.com) or click <https://on.mktw.net/2SHZtm5>

## Prompt Natural Gas (NG) Daily Sentiment

**BULLISH**



RESISTANCE  
4.55 & 4.69  
SUPPORT  
4.31 & 4.21

## Trading Summary

NATURAL GAS		
Futures	Close	Change
NG	4.407	(0.138)
Volume	461,693	(378,090)
Open Int.	1,277,275	(1,210)
CRUDE AND GASOLINE		
Futures	Close	Change
Crude	51.65	0.65
RBOB	1.4398	0.0209
Crude/NG	11.72	0.50
METALS		
Futures	Close	Change
Gold	1,241.90	3.40
EQUITIES		
Exchange	Close	Change
DOW	24,370.24	(53.02)
S&P 500	-437.48	(0.94)
CURRENCY		
Currency	Close	Change
EUR/USD	1.1346	0.0029
USD/CND	1.2405	(0.0036)

## 12 MONTH CANDLESTICK (WEEKLY)



## Contact Us



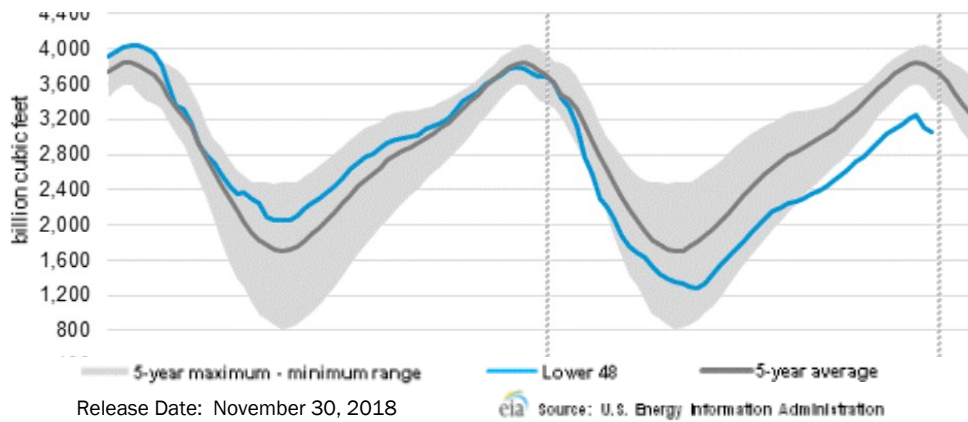
**Mansfield Energy Corp**  
1025 Airport Pkwy  
Gainesville, GA 30501  
  
[www.mansfield.energy](http://www.mansfield.energy)  
[info@mansfieldoil.com](mailto:info@mansfieldoil.com)

Phone: (800) 695-6626



**NATURAL GAS NEWS**

**WEEKLY GAS IN UNDERGROUND STORAGE WITH 5-YR RANGE**



**Rig Count**

Report Date: December 7, 2018

	Total	Change
US -	1,075	(1)
CN -	186	(13)

**EIA Weekly NG Storage Actual and Surveys for December 7, 2018**

Released December 6, 2018  
 Range — +101 to +54  
 PIRA— +57  
 PointLogic — +62  
 Citi Futures — +64

EIA ACTUAL — +63

**Total Working Gas In Storage**

**2,991 BCF**

(63) BCF (LAST WEEK)  
 (704) BCF (LAST YEAR)  
 (725) BCF (5-YR AVG)

**U.S. Natural Gas Supply Gas Week 11/29 – 12/5**

**Average daily values (BCF/D):**  
Last Year (BCF/d)  
 Dry Production — +78.4  
 Total Supply — +83.7  
Last Week (BCF/d)  
 Dry Production — +88.5  
 Total Supply — +92.5

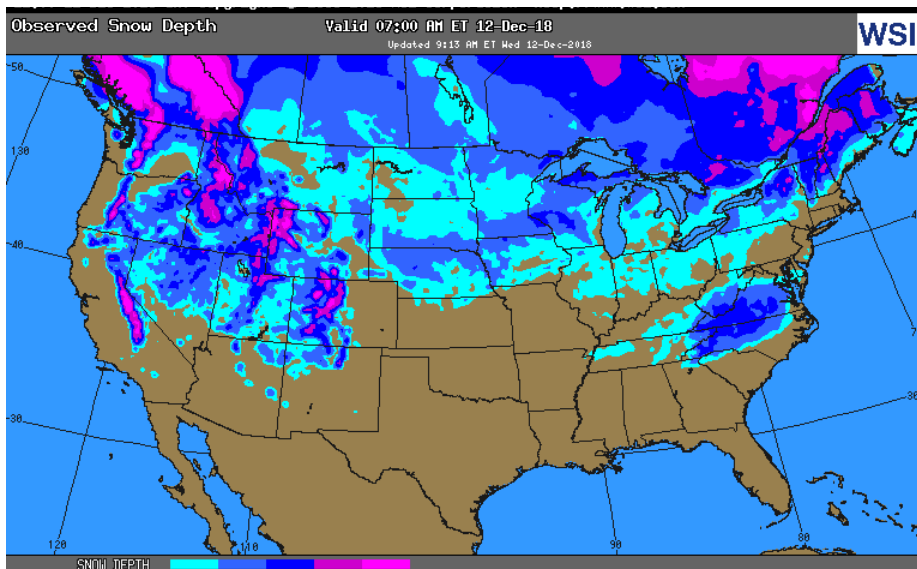
[NEXT REPORT ON Dec 14]

**U.S. Natural Gas Demand Gas Week 11/29 – 12/5**

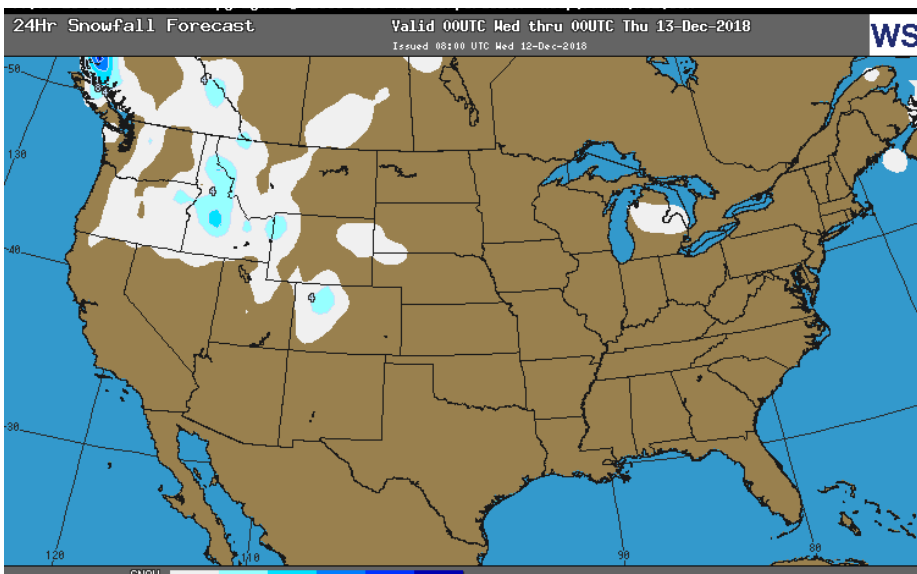
**Average daily values (BCF/D):**  
Last Year (BCF/d)  
 Power — +22.0  
 Total Demand — +84.4  
Last Week (BCF/d)  
 Power — +22.6  
 Total Demand — +101.1

[NEXT REPORT ON Dec 14]

**OBSERVED SNOW DEPTH**



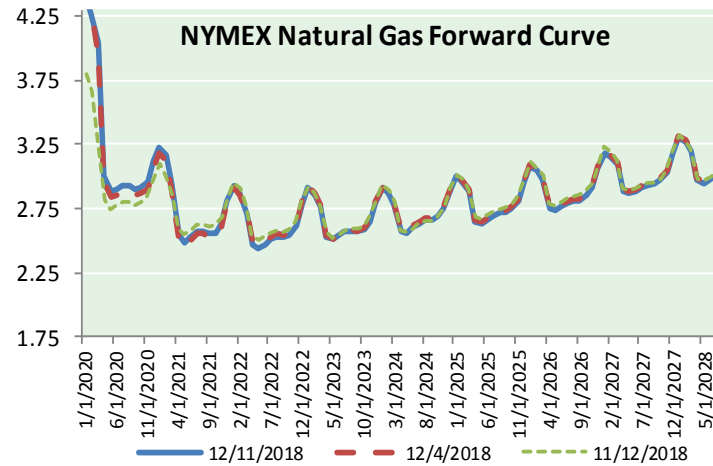
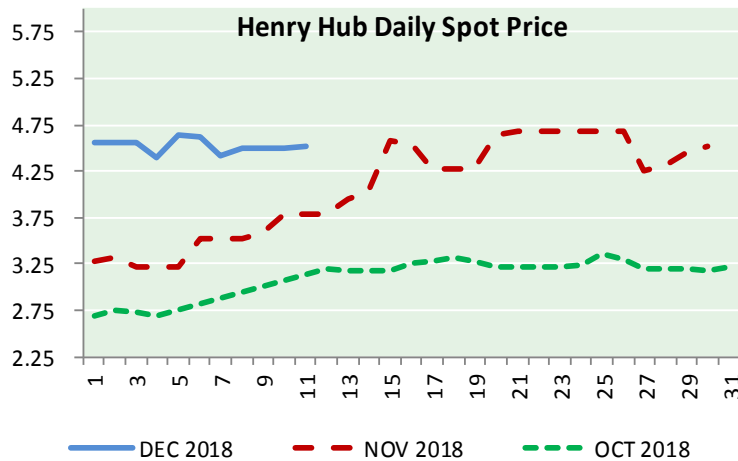
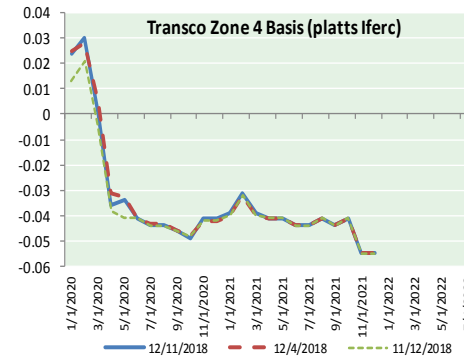
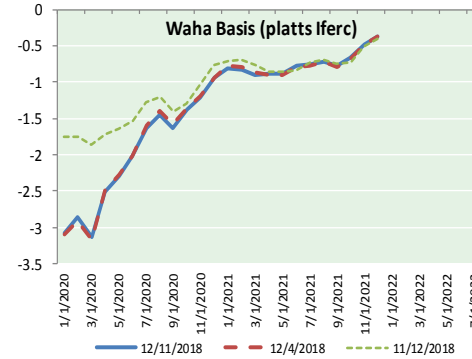
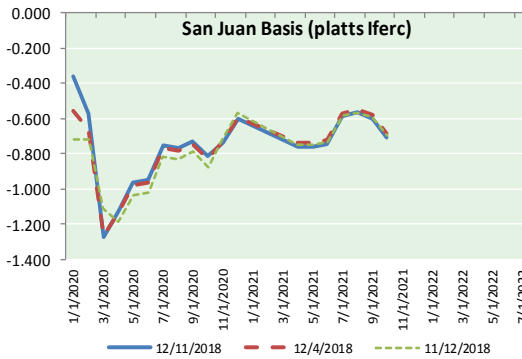
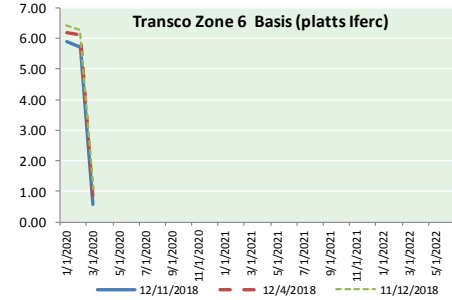
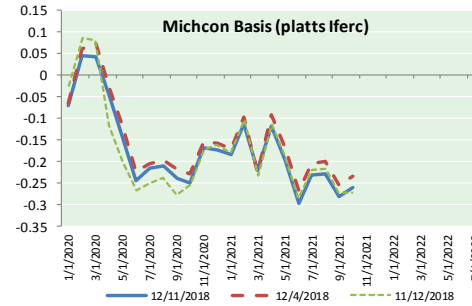
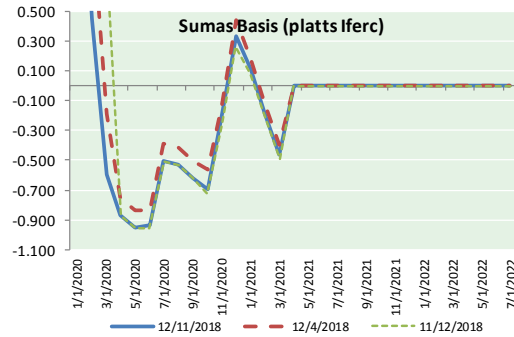
**24 HOUR SNOWFALL FORECAST**





# NATURAL GAS NEWS

## NATURAL GAS BASIS FUTURES, HENRY HUB SPOT PRICES, AND FORWARD CURVE



### NYMEX WTI Delivery Month Average (\$/bbl) (Excluding Weekends and Holidays)

Month: December 2018

Day	Price	Day	Price
1		16	
2		17	
3	52.95	18	
4	53.25	19	
5	52.89	20	
6	51.49	21	
7	52.61	22	
8		23	
9		24	
10	51.00	25	
11	51.65	26	
12		27	
13		28	
14		29	
15		30	
		31	

Average (Dec) 52.2629  
(through 12/11/2018)

Average (Nov) 56.6933

Average (Oct) 70.7578

### CME NG Option Prices

#### ATM Call

Month	Strike	Close	Imp Vol
Feb-19			
Mar-19	4.050	0.514	86.2
Apr-19			
May-19			
Jun-19			

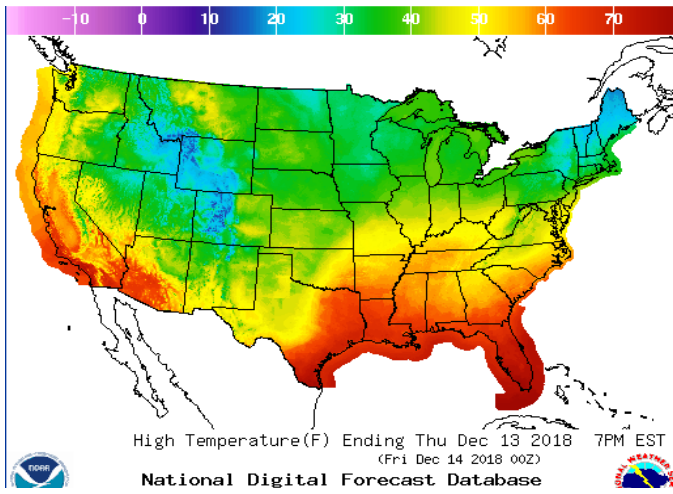
### CME NG Option Prices

#### ATM Put

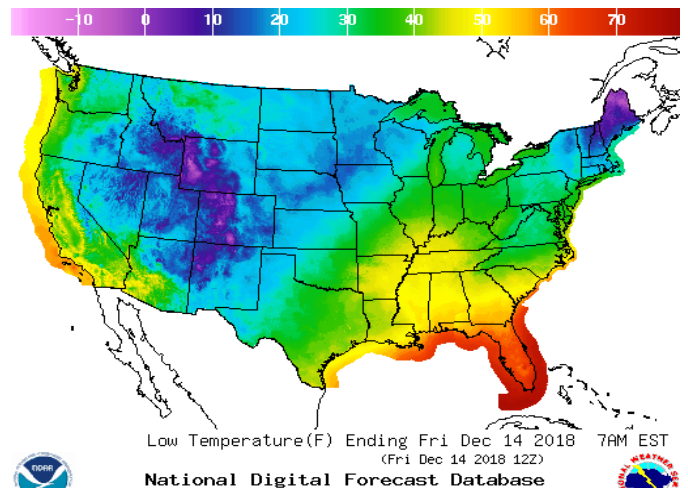
Month	Strike	Close	Imp Vol
Feb-19			
Mar-19	4.050	0.417	73.1
Apr-19			
May-19			
Jun-19			

WEATHER – HIGH / LOW TEMPERATURE TOMORROW

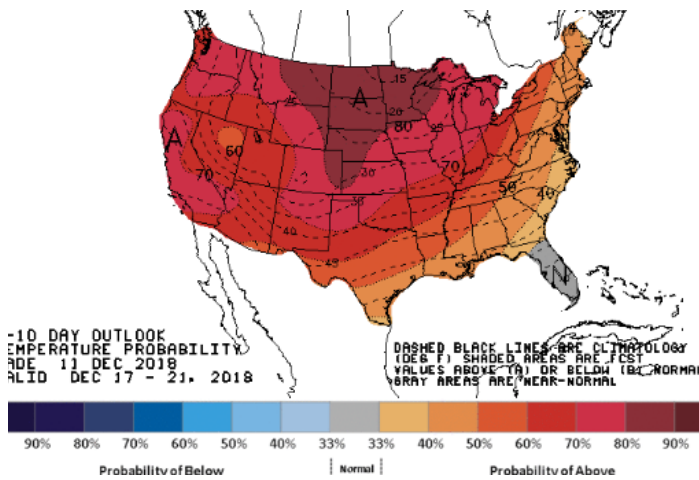
HIGH Temperature



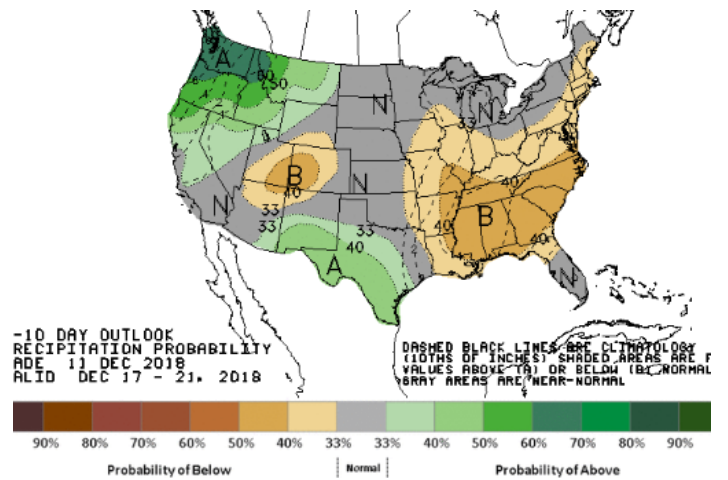
LOW Temperature



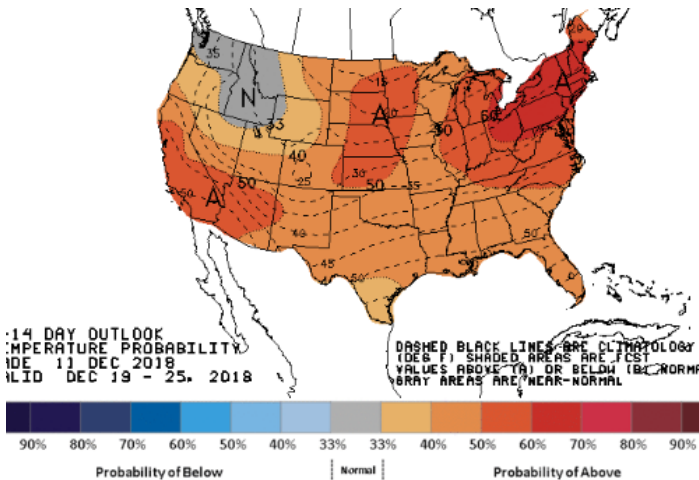
WEATHER – 6 TO 10 DAY OUTLOOK – NOAA  
Temperature



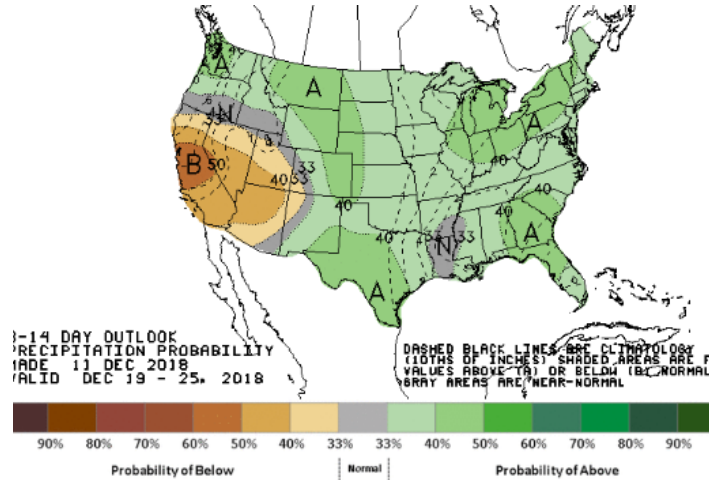
Precipitation



WEATHER – 8 TO 14 DAY OUTLOOK – NOAA  
Temperature



Precipitation

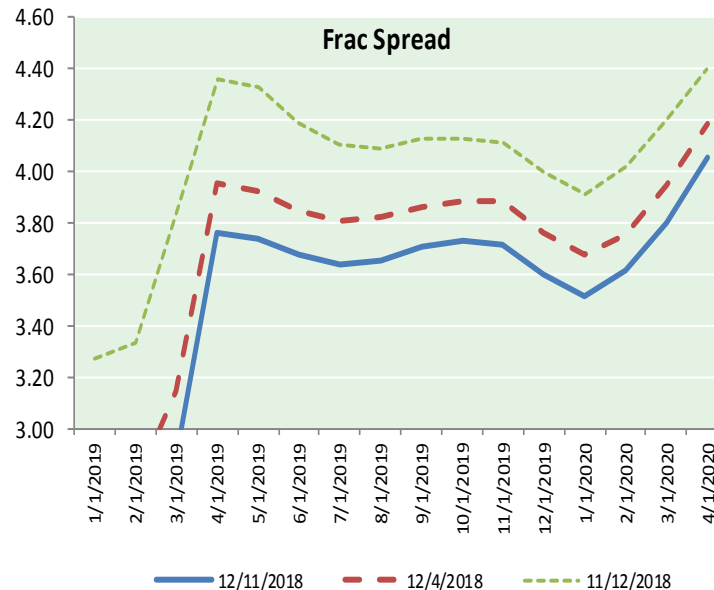
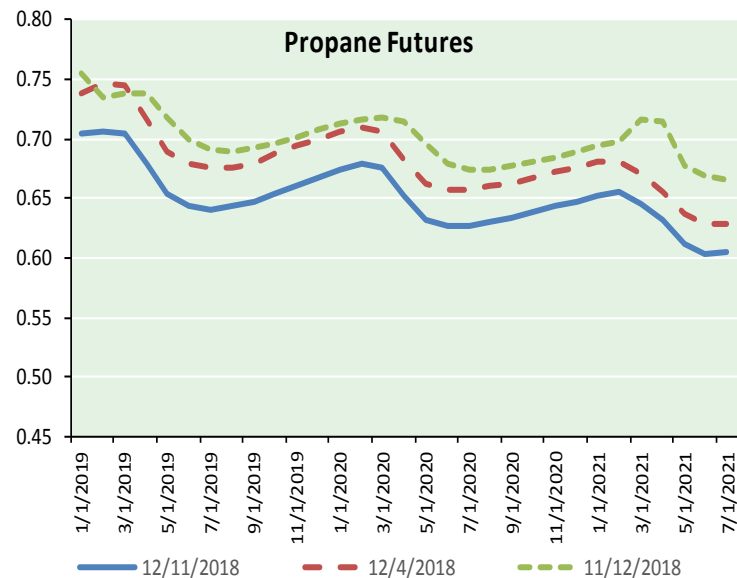
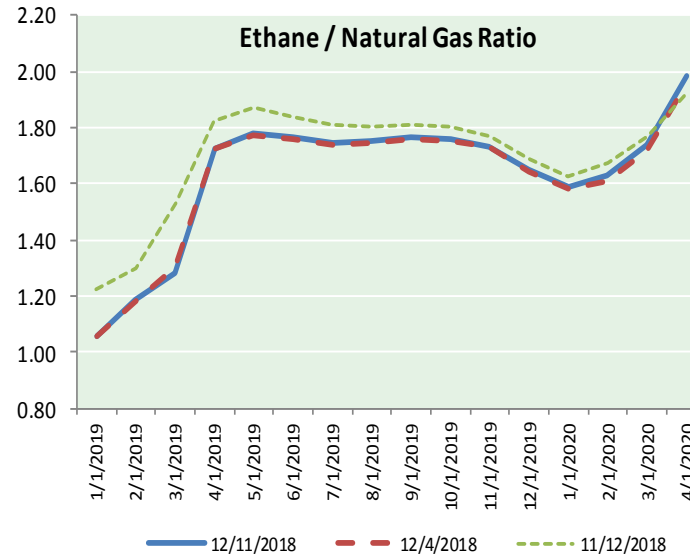
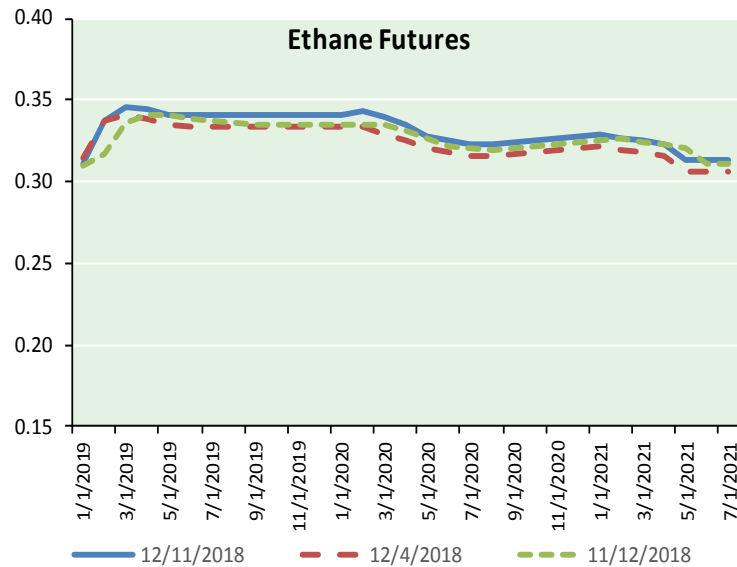




NATURAL GAS NEWS



ETHANE FUTURES, NG/ETHANE RATIO, PROPANE FUTURES, AND THE FRAC SPREAD



CME Future Prices

Month	Close	Change
Jan-19	0.311	(0.003)
Feb-19	0.337	0.000
Mar-19	0.345	0.001
Apr-19	0.344	0.001
May-19	0.341	0.000
Jun-19	0.341	0.000
Jul-19	0.341	0.001
Aug-19	0.341	0.001
Sep-19	0.341	0.001
Oct-19	0.341	0.001
Nov-19	0.341	0.001
Dec-19	0.341	0.001
1YR Strip	0.339	0.000

CME Future Prices

Propane (C3)  
Non-LDH— Mont Belvieu

Month	Close	Change
Jan-19	0.705	(0.002)
Feb-19	0.707	(0.003)
Mar-19	0.705	(0.003)
Apr-19	0.679	(0.003)
May-19	0.653	(0.003)
Jun-19	0.644	(0.001)
Jul-19	0.641	(0.001)
Aug-19	0.643	0.000
Sep-19	0.648	0.000
Oct-19	0.654	0.000
Nov-19	0.661	0.000
Dec-19	0.668	0.000
1YR Strip	0.667	(0.001)

**NATURAL GAS NEWS**



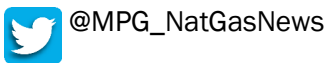
**Prompt WTI (CL) Crude  
Daily Sentiment**

**BEARISH**



RESISTANCE  
52.49 & 53.32  
SUPPORT  
50.76 & 49.86

**FOLLOW US ON TWITTER:**

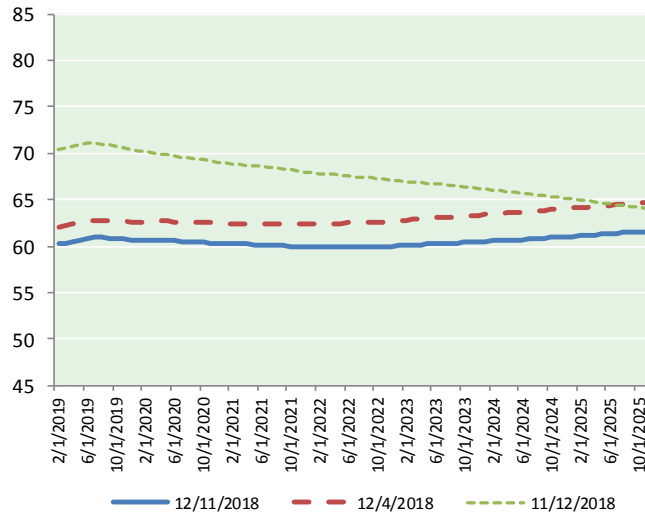


**NYMEX Brent (BZ)**

**Futures**

Month	Close	Change
Jan-19	51.65	0.65
Feb-19	51.84	0.64
Mar-19	52.01	0.61
Apr-19	52.21	0.56
May-19	52.42	0.51
Jun-19	52.63	0.47
Jul-19	52.78	0.43
Aug-19	52.89	0.40
Sep-19	52.96	0.37
Oct-19	52.98	0.35
Nov-19	52.99	0.32
Dec-19	52.99	0.32
Jan-20	52.96	0.31
Feb-20	52.92	0.30
Mar-20	52.91	0.31
Apr-20	52.88	0.30
May-20	52.87	0.30
Jun-20	52.87	0.30
Jul-20	52.82	0.31
Aug-20	52.78	0.31
Sep-20	52.75	0.32
Oct-20	52.73	0.31
Nov-20	52.71	0.30
Dec-20	52.71	0.29
1YR Strip 2018	52.53	0.47
5YR Strip	52.25	0.28

**BRENT CRUDE FORWARD CURVE**



**FRAC Spread**

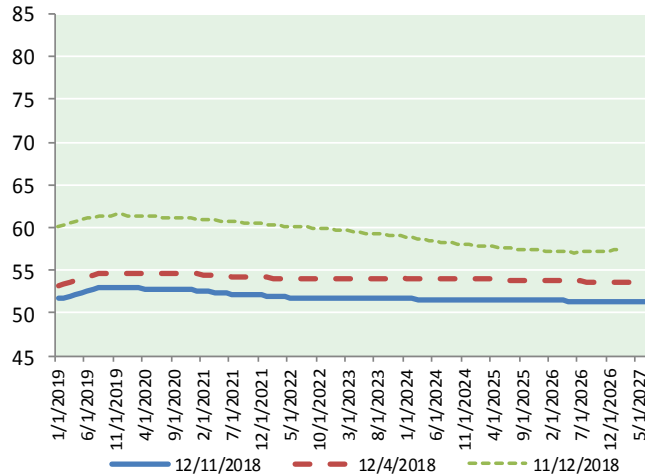
**Specifications**

Ethane : 42% 66,500 btu/g  
Propane: 28% 90,830 btu/g  
Butane: 11% 102,916 btu/g  
Iso-Butane: 6% 98,935 btu/g  
Natural Gasoline: 13%  
115,021 btu/g

**Prompt NGL Futures**

	Jan-19	Close	Change
Butane	0.807	(0.005)	
Iso-Butane	0.859	(0.007)	
Nat Gasoline	1.082	0.035	

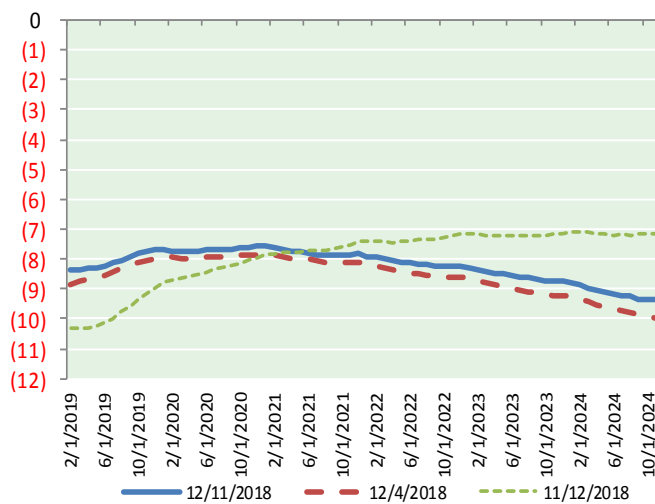
**WTI CRUDE FORWARD CURVE**



**NYMEX WTI (CL) Futures**

Month	Close	Change
Feb-19	60.20	0.23
Mar-19	60.35	0.25
Apr-19	60.50	0.26
May-19	60.70	0.28
Jun-19	60.84	0.29
Jul-19	60.92	0.30
Aug-19	60.93	0.31
Sep-19	60.86	0.31
Oct-19	60.81	0.32
Nov-19	60.76	0.32
Dec-19	60.69	0.32
Jan-20	60.67	0.32
Feb-20	60.65	0.33
Mar-20	60.64	0.33
Apr-20	60.64	0.33
May-20	60.61	0.33
Jun-20	60.58	0.33
Jul-20	60.53	0.33
Aug-20	60.48	0.33
Sep-20	60.43	0.34
Oct-20	60.38	0.35
Nov-20	60.32	0.35
Dec-20	60.27	0.34
Jan-21	60.23	0.34

**WTI-BRENT SPREAD**



1YR Strip	60.69	0.29
2018	#DIV/0!	#DIV/0!
5YR Strip	60.30	0.30