

NATURAL GAS



AUGUST 9, 2018

Prior Day's NYMEX Sep-18 Contract (CT)



NYMEX NG Futures

Month	Close	Change
Sep-18	2.949	0.052
Oct-18	2.955	0.055
Nov-18	2.989	0.054
Dec-18	3.077	0.046
Jan-19	3.163	0.046
Feb-19	3.124	0.044
Mar-19	3.019	0.045
Apr-19	2.691	0.034
May-19	2.655	0.030
Jun-19	2.681	0.028
Jul-19	2.712	0.029
Aug-19	2.716	0.029
Sep-19	2.698	0.030
Oct-19	2.714	0.030
Nov-19	2.761	0.029
Dec-19	2.883	0.026
Jan-20	2.980	0.028
Feb-20	2.936	0.024
Mar-20	2.827	0.021
Apr-20	2.522	0.015
May-20	2.481	0.015
Jun-20	2.504	0.013
Jul-20	2.531	0.013
Aug-20	2.538	0.014
1YR Strip	2.894	0.041
2018	2.993	0.052
5YR Strip	2.680	0.020

IN THE NEWS

With Threatened Gas Tariff, China Wields a Potent Long-Term Weapon — US News reported: Companies across the U.S. oil and gas sector are poised to feel the pain if China's threat of a 25 percent tariff on American liquefied natural gas stays in place and the countries' leaders fail to halt their escalating trade war. The threat marked the latest development in the spat, with Beijing

- **With Threatened Gas Tariff, China Wields a Potent Long-Term Weapon**
- **A Gas Company Settles for \$119.5 Million for the Biggest Methane Leak in U.S. History**

taking aim at one of President Donald Trump's key bases of support – and one of the country's economic engines – in response to Trump's decision to hike tariffs on Chinese goods from 10 to 25 percent. But it will take months – and perhaps a year or longer – before the pain is truly felt, perhaps enough time for both sides to find rapprochement. If it takes effect, the move would essentially lock out the world's largest producer of natural gas from the world's single biggest and fastest-growing market for the product, threatening to undercut the Trump administration's high-profile drive to remake U.S. foreign policy – and project American power – by wielding the country's surging oil and gas production. For more on this story visit usnews.com or click <https://bit.ly/2OoJcAe>

A Gas Company Settles for \$119.5 Million for the Biggest Methane Leak in U.S. History — Pacific Standard reports: After one of its natural gas storage wells blew out and caused the biggest methane leak in United States history, the Southern California Gas Company has agreed to pay \$119.5 million to settle city, county, and state claims against it, the Los Angeles Times reports. SoCal Gas has already paid \$4 million, and agreed to pay another \$8.5 million, in other settlements related to the disaster. The leak began in October of 2015, in SoCal Gas' Aliso Canyon gas field. It took the company almost four months to stop the outpouring of natural gas, during which time an estimated 109,000 metric tons of methane were released into the atmosphere. For more on this story visit psmag.com or click <https://bit.ly/2vSTISm>

Prompt Natural Gas (NG) Daily Sentiment

BULLISH



RESISTANCE
2.97 & 3.00
SUPPORT
2.91 & 2.86

Trading Summary

NATURAL GAS

Futures	Close	Change
NG	2.949	0.052
Volume	575,733	(505,225)
Open Int.	1,569,113	(8,168)

CRUDE AND GASOLINE

Futures	Close	Change
Crude	66.94	(2.23)
RBOB	2.0195	(0.0845)
Crude/NG	22.70	(1.18)

METALS

Futures	Close	Change
Gold	1,212.60	2.30

EQUITIES

Exchange	Close	Change
DOW	25,628.91	126.73
S&P 500	-1,696.15	8.05

CURRENCY

Currency	Close	Change
EUR/USD	1.1582	(0.0017)
USD/CND	1.2405	0.0012

12 MONTH CANDLESTICK (WEEKLY)



Contact Us

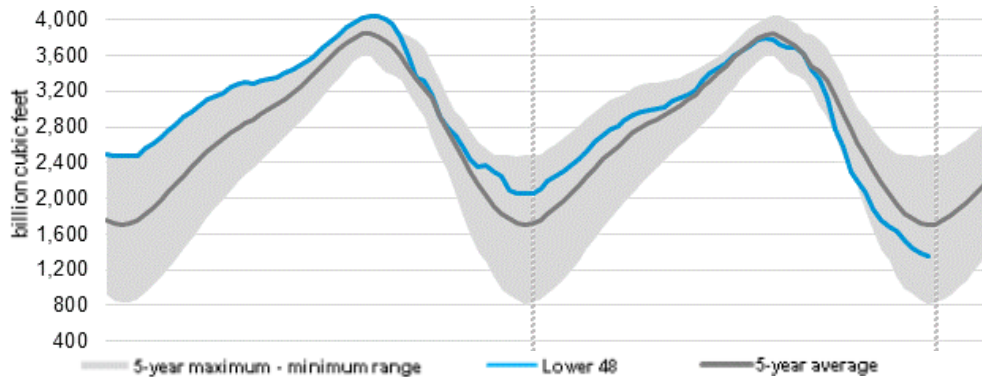


Mansfield Energy Corp
1025 Airport Pkwy
Gainesville, GA 30501

www.mansfield.energy
info@mansfieldoil.com

Phone: (800) 695-6626

WEEKLY GAS IN UNDERGROUND STORAGE WITH 5-YR RANGE



Release Date: August 2, 2018

Source: U.S. Energy Information Administration

Rig Count

Report Date: August 3, 2018

	Total	Change
US -	1044	(4)
CN -	223	0

EIA Storage Forecast and Surveys for Release Date

August 9, 2018

Range – +35 to +57

PIRA – +44

CITI – +47

Reuters – +47

EIA ACTUAL Due Out Today at 10:30am EPT/09:30am CPT

Total Working Gas In Storage

2,308 BCF

35 BCF (LAST WEEK)

(668) BCF (LAST YEAR)

(565) BCF (5-YR AVG)

U.S. Natural Gas Supply Gas Week 7/26 – 8/1

Average daily values (BCF/D):

Last Year (BCF/d)

Dry Production – +73.4

Total Supply – +79.3

Last Week (BCF/d)

Dry Production – +81.0

Total Supply – +86.6

[NEXT REPORT ON Aug 10]

U.S. Natural Gas Demand Gas Week 7/26 – 8/1

Average daily values (BCF/D):

Last Year (BCF/d)

Power – +34.4

Total Demand – +73.3

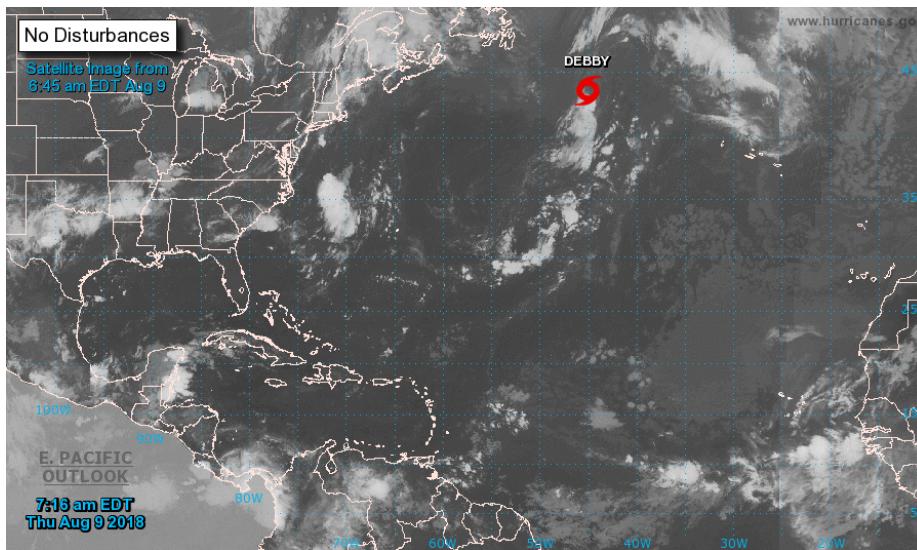
Last Week (BCF/d)

Power – +36.8

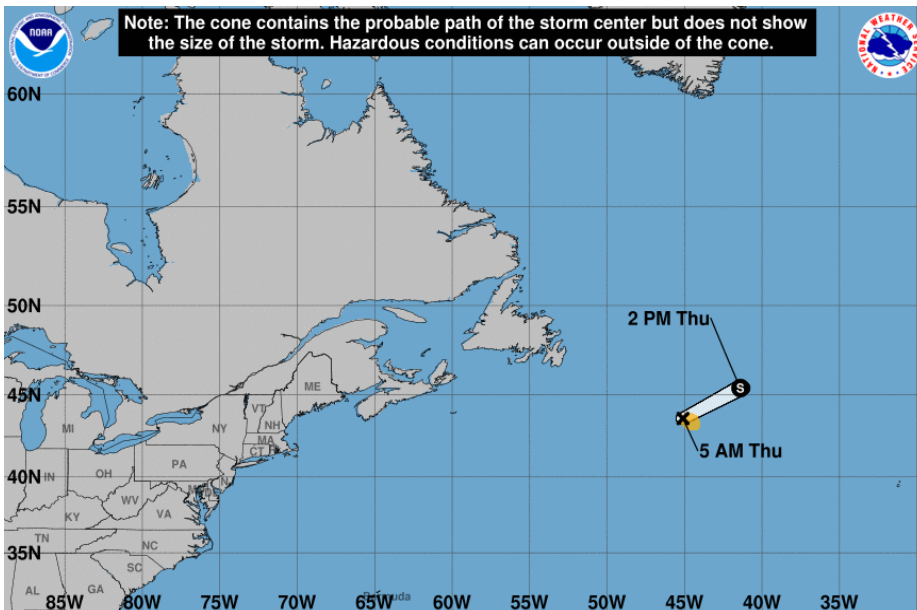
Total Demand – +78.9

[NEXT REPORT ON Aug 10]

TROPICAL STORM ACTIVITY– ATLANTIC



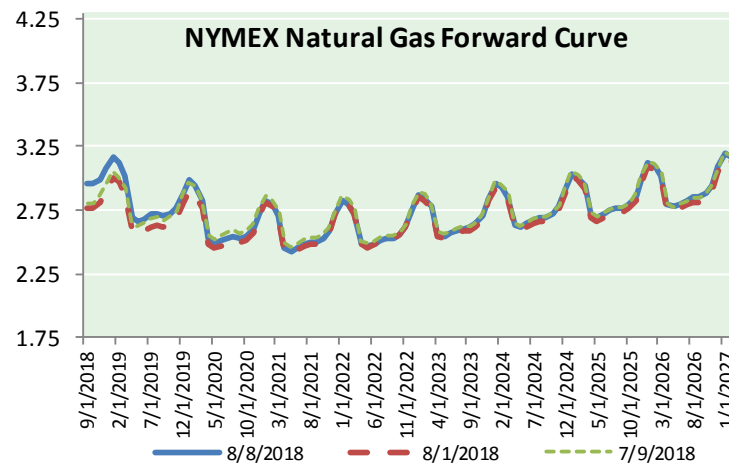
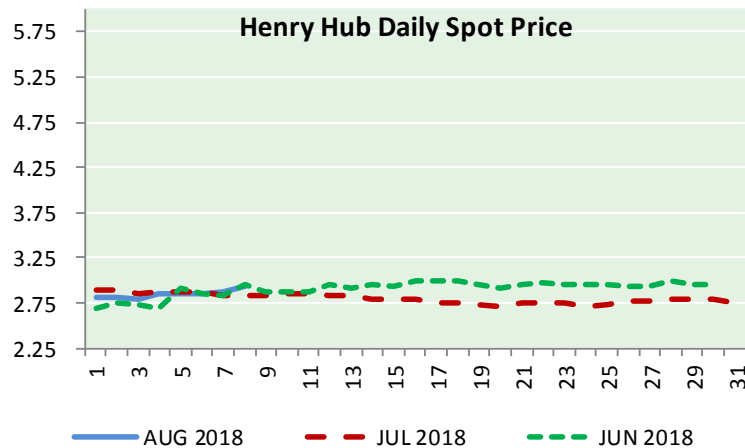
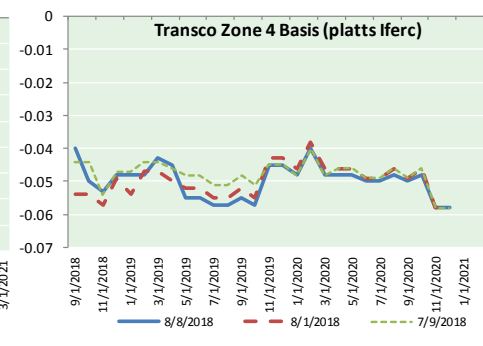
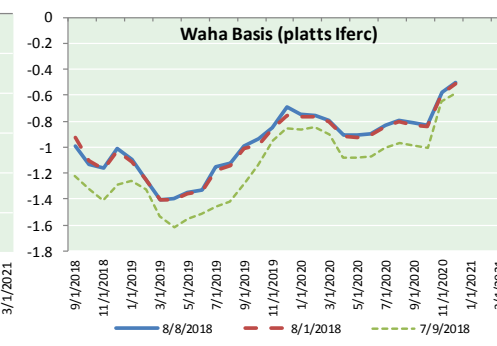
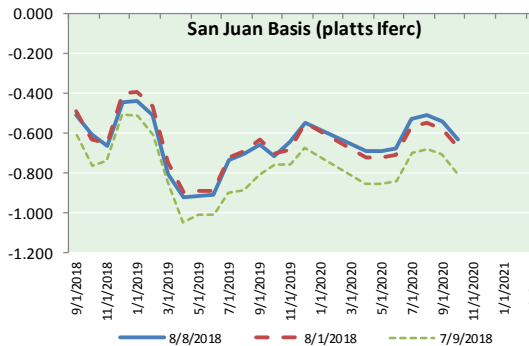
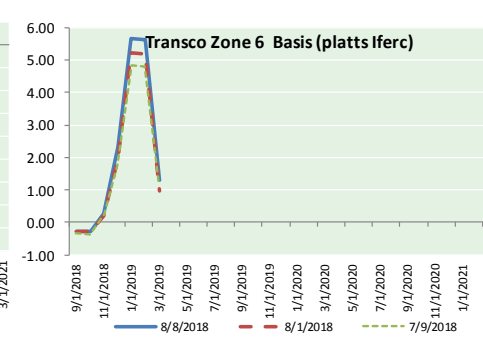
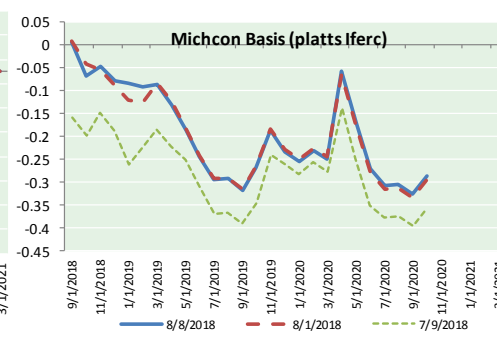
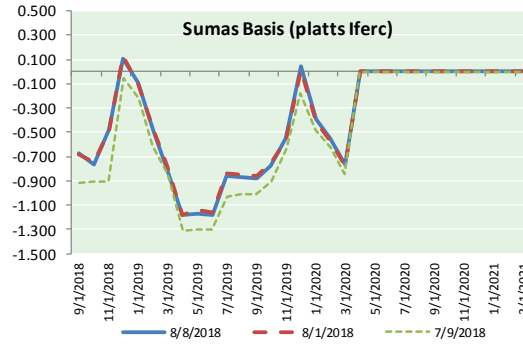
DEBBY





NATURAL GAS NEWS

NATURAL GAS BASIS FUTURES, HENRY HUB SPOT PRICES, AND FORWARD CURVE



NYMEX WTI Delivery Month Average (\$/bbl) (Excluding Weekends and Holidays)

Month: August 2018

Day	Price	Day	Price
1	67.66	16	
2	68.96	17	
3	68.49	18	
4		19	
5		20	
6	69.01	21	
7	69.17	22	
8	66.94	23	
9		24	
10		25	
11		26	
12		27	
13		28	
14		29	
15		30	
		31	

Average (Aug) 68.3717
(through 08/08/2018)

Average (Jul) 70.5819

Average (Jun) 67.3229

CME NG Option Prices

ATM Call

Month	Strike	Close	Imp	Vol
Oct-18				
Nov-18	2.950	0.098		22.5
Dec-18				
Jan-19				
Feb-19				

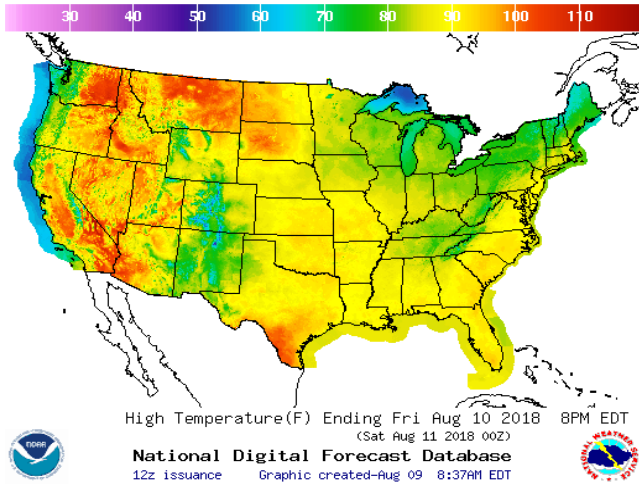
CME NG Option Prices

ATM Put

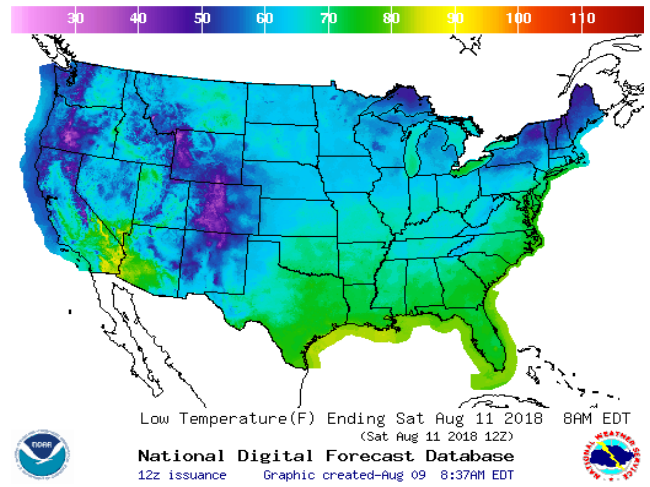
Month	Strike	Close	Imp	Vol
Oct-18				
Nov-18	2.950	0.094		22.5
Dec-18				
Jan-19				
Feb-19				

WEATHER – HIGH / LOW TEMPERATURE TOMORROW

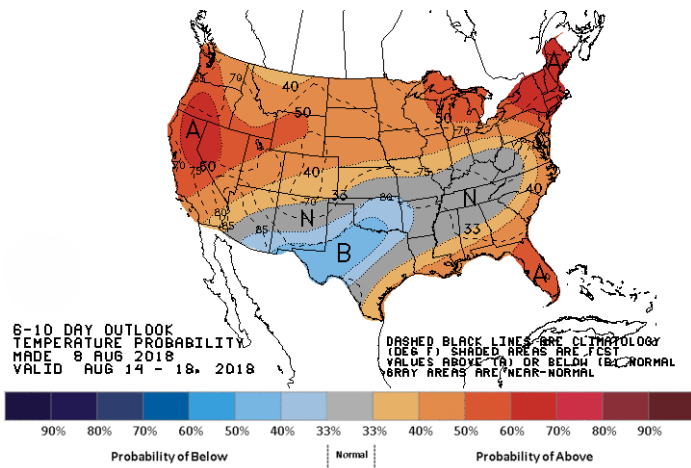
HIGH Temperature



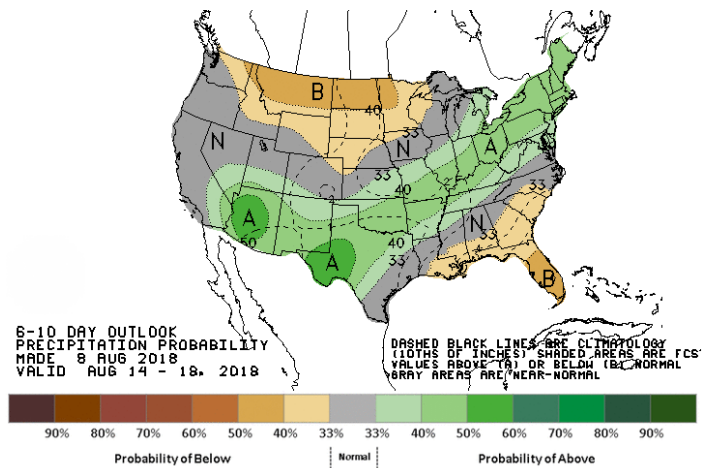
LOW Temperature



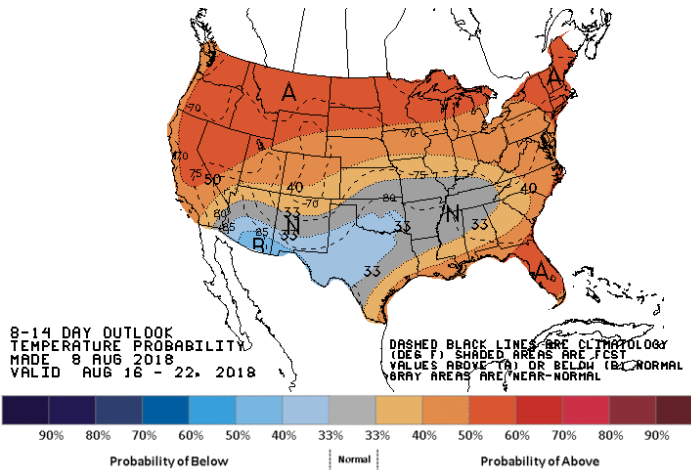
WEATHER – 6 TO 10 DAY OUTLOOK – NOAA
Temperature



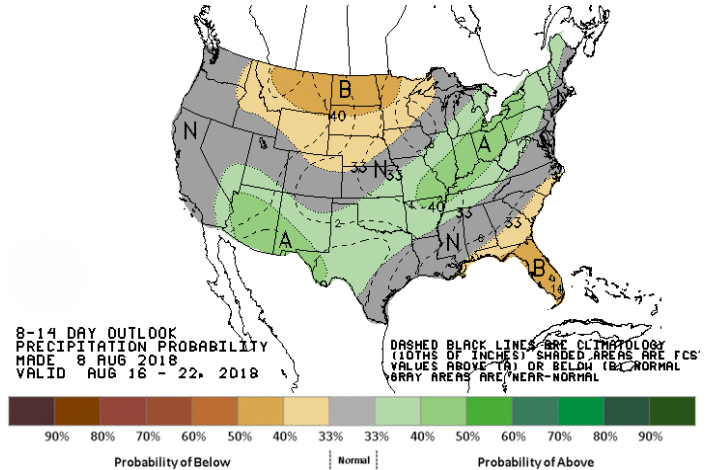
Precipitation



WEATHER – 8 TO 14 DAY OUTLOOK – NOAA
Temperature

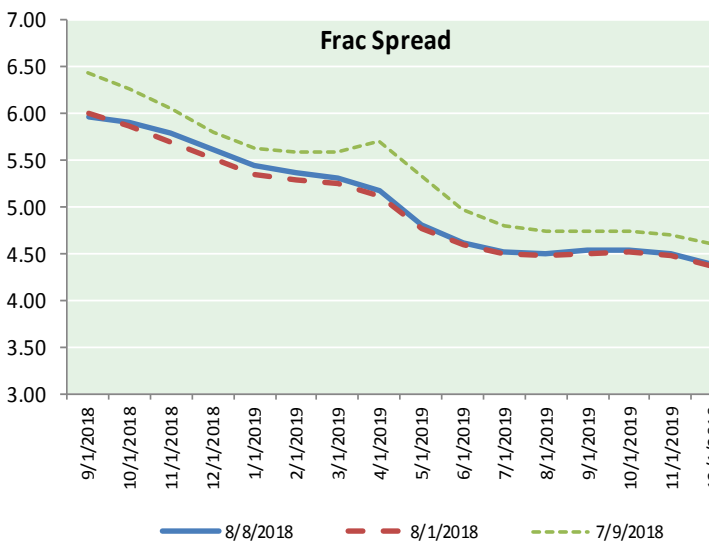
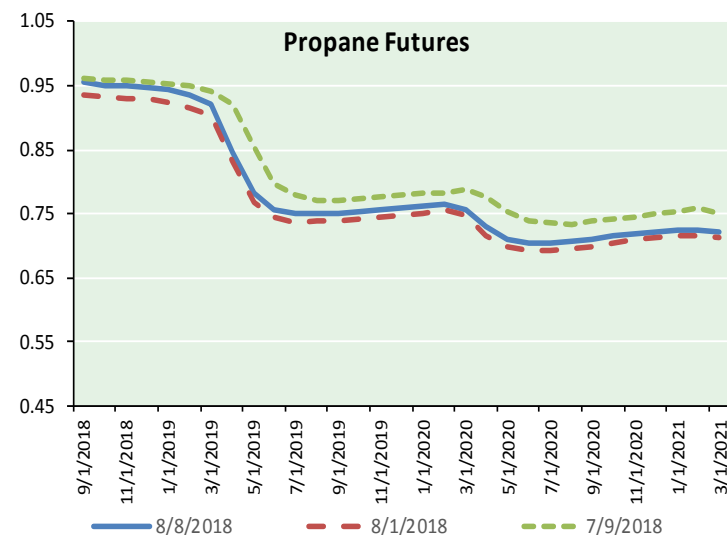
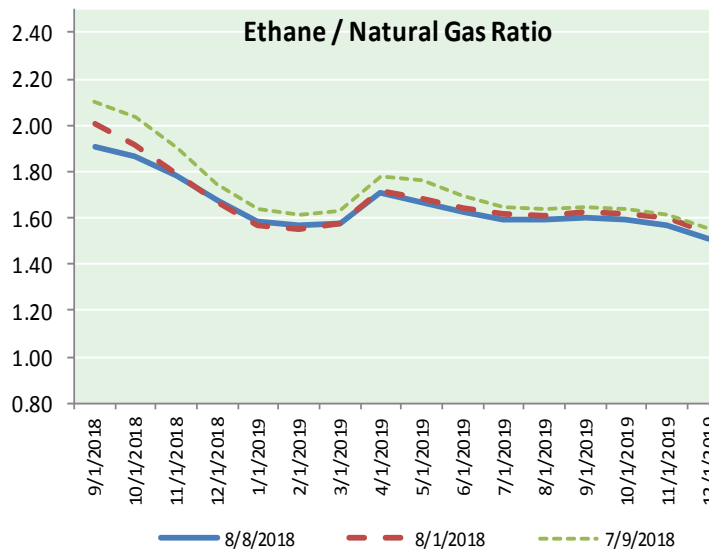
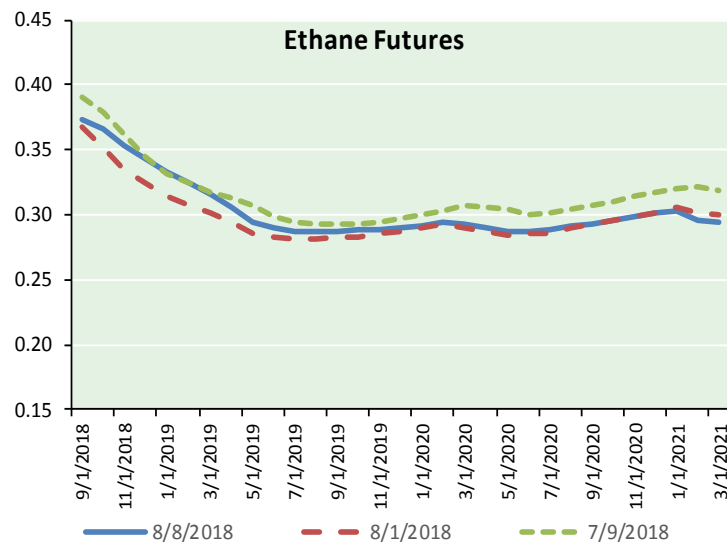


Precipitation





ETHANE FUTURES, NG/ETHANE RATIO, PROPANE FUTURES, AND THE FRAC SPREAD



CME Future Prices

Ethane (C2)

Non-LDH— Mont Belvieu

Month	Close	Change
Sep-18	0.374	(0.006)
Oct-18	0.366	(0.007)
Nov-18	0.354	(0.005)
Dec-18	0.343	(0.004)
Jan-19	0.333	(0.002)
Feb-19	0.325	0.000
Mar-19	0.316	0.000
Apr-19	0.305	0.000
May-19	0.294	(0.000)
Jun-19	0.290	(0.001)
Jul-19	0.288	(0.000)
Aug-19	0.287	0.002

1YR Strip 0.323 (0.002)

CME Future Prices

Propane (C3)

Non-LDH— Mont Belvieu

Month	Close	Change
Sep-18	0.955	(0.023)
Oct-18	0.951	(0.031)
Nov-18	0.950	(0.031)
Dec-18	0.948	(0.031)
Jan-19	0.944	(0.031)
Feb-19	0.936	(0.029)
Mar-19	0.920	(0.028)
Apr-19	0.846	(0.026)
May-19	0.782	(0.025)
Jun-19	0.758	(0.024)
Jul-19	0.750	(0.023)
Aug-19	0.750	(0.023)

1YR Strip 0.874 (0.027)

NATURAL GAS NEWS



Prompt WTI (CL) Crude

Daily Sentiment

NEUTRAL



RESISTANCE

68.77 & 70.59

SUPPORT

66.29 & 65.72

FOLLOW US ON TWITTER:



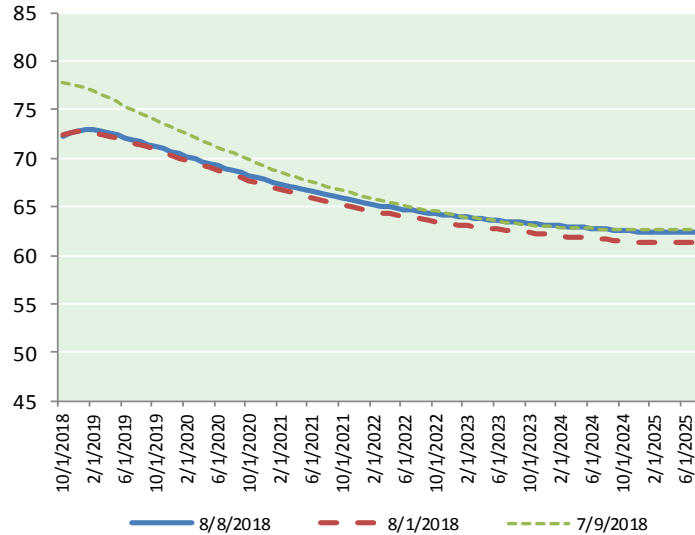
@MPG_NatGasNews

NYMEX Brent (BZ)

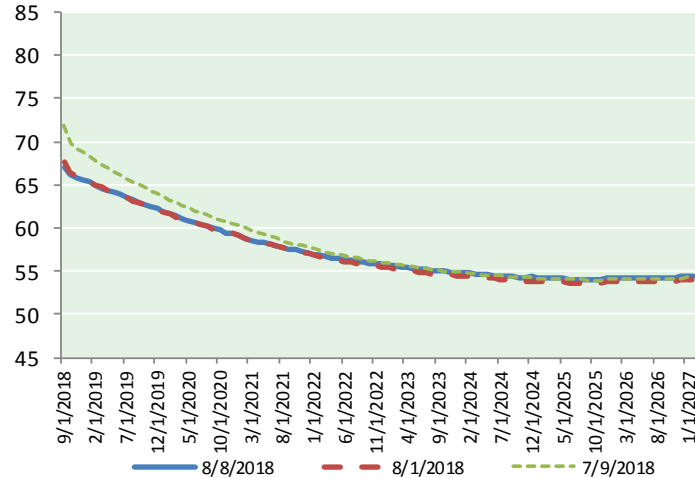
Futures

Month	Close	Change
Oct-18	72.28	(2.37)
Nov-18	72.64	(2.35)
Dec-18	72.84	(2.32)
Jan-19	72.92	(2.29)
Feb-19	72.90	(2.24)
Mar-19	72.77	(2.19)
Apr-19	72.59	(2.17)
May-19	72.37	(2.14)
Jun-19	72.11	(2.12)
Jul-19	71.89	(2.10)
Aug-19	71.67	(2.08)
Sep-19	71.43	(2.06)
Oct-19	71.18	(2.03)
Nov-19	70.95	(2.00)
Dec-19	70.69	(1.97)
Jan-20	70.44	(1.95)
Feb-20	70.21	(1.93)
Mar-20	69.96	(1.92)
Apr-20	69.69	(1.91)
May-20	69.45	(1.89)
Jun-20	69.22	(1.87)
Jul-20	68.97	(1.86)
Aug-20	68.73	(1.84)
Sep-20	68.49	(1.82)
1YR Strip	72.37	(2.20)
2018	72.59	(2.35)
5YR Strip	67.55	(1.78)

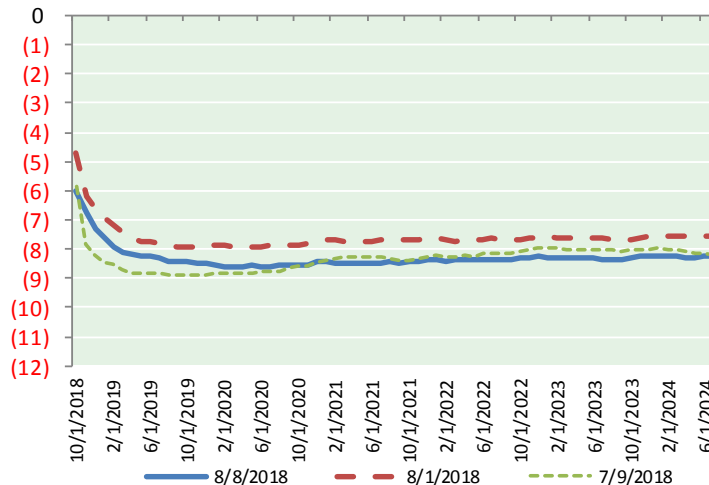
BRENT CRUDE FORWARD CURVE



WTI CRUDE FORWARD CURVE



WTI-BRENT SPREAD



FRAC Spread

Specifications

Ethane	: 42%	66,500 btu/g
Propane	: 28%	90,830 btu/g
Butane	: 11%	102,916 btu/g
Iso-Butane	: 6%	98,935 btu/g
Natural Gasoline	: 13%	115,021 btu/g

Prompt NGL Futures

(\$/gallon)

	Sep-18	Close	Change
Butane	1.135	1.135	(0.020)
Iso-Butane	1.127	1.127	(0.011)
Nat Gasoline	1.508	1.508	(0.039)

NYMEX WTI (CL) Futures

Month	Close	Change
Sep-18	66.94	(2.23)
Oct-18	66.25	(2.08)
Nov-18	65.87	(2.09)
Dec-18	65.54	(2.08)
Jan-19	65.30	(2.05)
Feb-19	64.97	(1.99)
Mar-19	64.66	(1.95)
Apr-19	64.39	(1.90)
May-19	64.13	(1.86)
Jun-19	63.86	(1.83)
Jul-19	63.56	(1.79)
Aug-19	63.26	(1.76)
Sep-19	62.99	(1.73)
Oct-19	62.73	(1.70)
Nov-19	62.47	(1.67)
Dec-19	62.22	(1.65)
Jan-20	61.91	(1.63)
Feb-20	61.63	(1.61)
Mar-20	61.36	(1.57)
Apr-20	61.11	(1.55)
May-20	60.88	(1.53)
Jun-20	60.64	(1.53)
Jul-20	60.38	(1.51)
Aug-20	60.16	(1.48)
1YR Strip	64.89	(1.97)
2018	66.15	(2.12)
5YR Strip	59.40	(1.49)