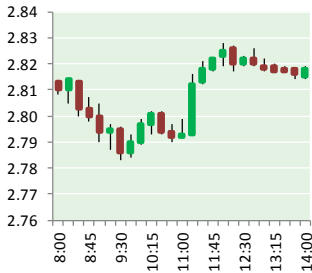


NATURAL GAS



AUGUST 9, 2017

Prior Day's NYMEX Sep-17 Contract (CT)



NYMEX NG Futures

Month	Close	Change
Sep-17	2.822	0.021
Oct-17	2.860	0.020
Nov-17	2.941	0.015
Dec-17	3.089	0.010
Jan-18	3.188	0.013
Feb-18	3.181	0.016
Mar-18	3.140	0.015
Apr-18	2.850	0.016
May-18	2.829	0.015
Jun-18	2.855	0.015
Jul-18	2.882	0.015
Aug-18	2.887	0.015
Sep-18	2.866	0.015
Oct-18	2.886	0.015
Nov-18	2.937	0.014
Dec-18	3.069	0.013
Jan-19	3.154	0.011
Feb-19	3.131	0.011
Mar-19	3.069	0.010
Apr-19	2.724	0.010
May-19	2.694	0.010
Jun-19	2.716	0.010
Jul-19	2.739	0.010
Aug-19	2.749	0.009
1YR Strip	2.960	0.016
2017	2.928	0.017
5YR Strip	2.858	0.012

IN THE NEWS

Oil Stuck At \$50 As OPEC Output Jumps — Oil Price reports: Oil prices faltered on Monday on concerns about slipping OPEC compliance, as well as news that a disruption in Libya had ended. "The petroleum markets are tipping toward the lower end of their recent trading range as oil producers meeting in Abu Dhabi have

- Oil Stuck At \$50 As OPEC Output Jumps
- EIA raises natural gas market production estimates

been slow to assure the market that compliance with this years production cuts will be improved," Tim Evans, Citi Futures' energy futures specialist, wrote in a research note. News that Saudi Arabia would cut oil exports (see below) helped steady crude benchmarks on Tuesday. For more visit oilprice.com or click the following link <http://bit.ly/2hk9qSA>

US EIA raises gas market production estimates – Platts reports: The US Energy Information Administration nudged up its natural gas production estimates for the fourth quarter and coming year amid rising demand from the generation sector and a boost in exports. "US natural gas production growth is expected to accelerate over the next two years, with growth rates over 2% in 2017 and over 5.5% in 2018," said EIA Acting Administrator Howard Gruenspecht in a statement accompanying the outlook. In its look at the continued tug-of-war between coal and gas as power plant fuels, EIA forecast that gas' share of utility scale power generation would fall to about 31% in 2017 from an average of 34% in 2016 amid higher gas prices, increased generation from renewables and coal and easing power demand. EIA forecasts that coal's share of the generation pie would grow to nearly 32% in 2017 from 30%. Coal and gas will fuel roughly the same proportion of generation the following year, the agency estimated. For more on this story visit platts.com or click <http://bit.ly/2hJLVJi>

12 MONTH CANDLESTICK (WEEKLY)



Prompt Natural Gas (NG) Daily Sentiment BEARISH



RESISTANCE
2.86 & 2.92
SUPPORT
2.79 & 2.76

Trading Summary

NATURAL GAS

Futures	Close	Change
NG	2.822	0.021
Volume	359,547	(337,796)
Open Int.	1,340,607	(1,385)

CRUDE AND GASOLINE

Futures	Close	Change
Crude	49.17	(0.22)
RBOB	1.6208	(0.0091)
Crude/NG	17.42	(0.21)

METALS

Futures	Close	Change
Gold	1,256.40	10.70

EQUITIES

Exchange	Close	Change
DOW	22,085.34	(33.08)
S&P 500	2,294.62	(186.29)

CURRENCY

Currency	Close	Change
EUR/USD	1.1778	(0.0043)
USD/CND	1.2676	0.0008

Contact Us



Mansfield Energy Corp
1025 Airport Pkwy
Gainesville, GA 30501

www.mansfield.energy
info@mansfieldoil.com

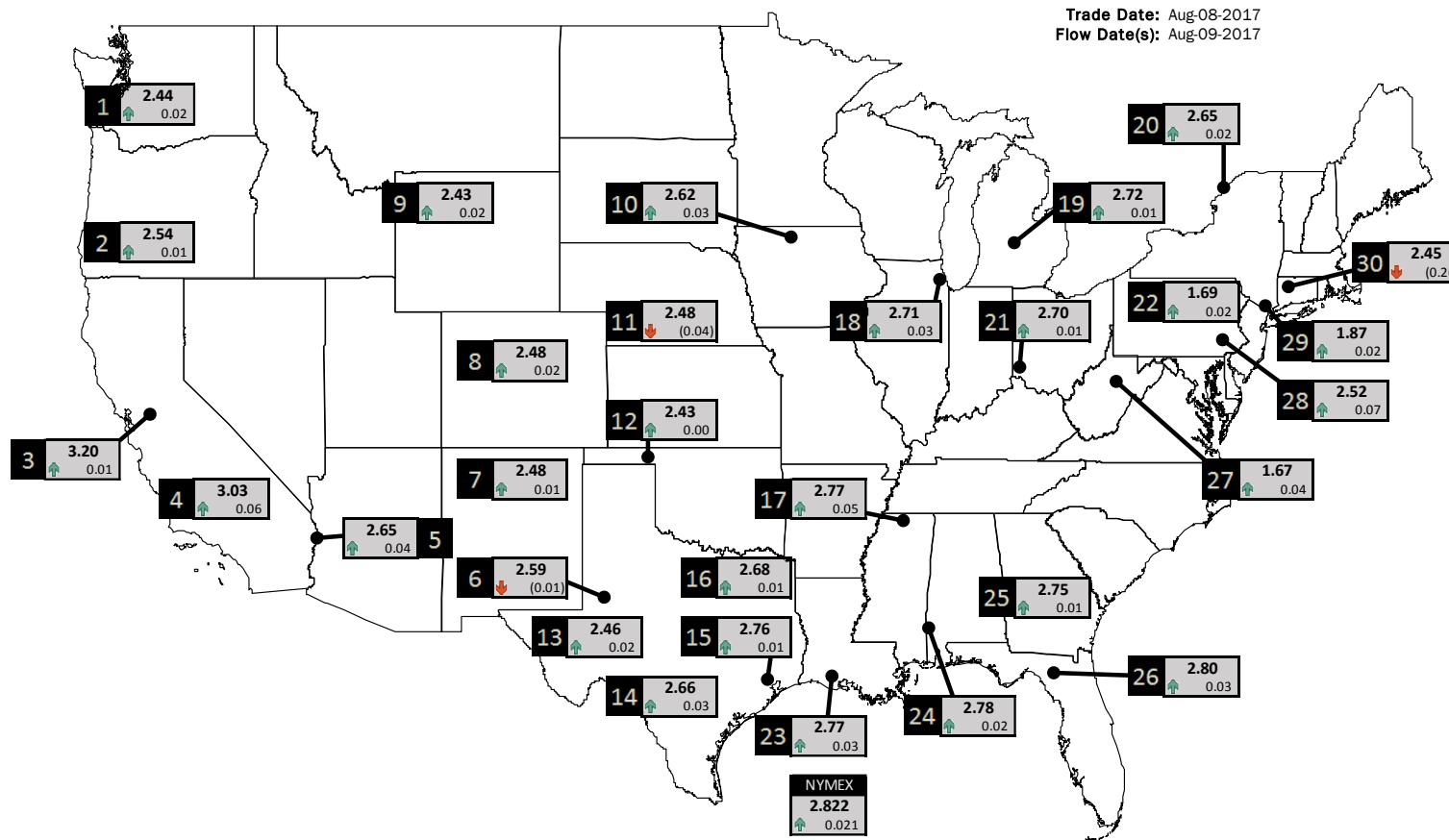
Phone: (800) 695-6626





NATURAL GAS NEWS

PHYSICAL SPOT NATURAL GAS PRICE MAP



ID	DAILY INDEX	PRICE	CHANGE
1	Stanfield	2.44	0.02
2	Malin	2.54	0.01
3	PG&E - Citygate	3.20	0.01
4	Socal-Citygate	3.03	0.06
5	SoCal Border	2.65	0.04
6	Waha	2.59	(0.01)
7	EPSJ Blanco Pool	2.48	0.01
8	Opal Plant Tailgate	2.48	0.02
9	NWP-Wyoming	2.43	0.02
10	Ventura	2.62	0.03

ID	DAILY INDEX	PRICE	CHANGE
11	NGPL-Midcont Pool	2.48	(0.04)
12	Panhandle	2.43	0.00
13	EP-Permian	2.46	0.02
14	TGP-ZO	2.66	0.03
15	Houston Ship Channel	2.76	0.01
16	NGPL-TXOK	2.68	0.01
17	TETCO-M1 30	2.77	0.05
18	Chicago Citygates	2.71	0.03
19	Michcon	2.72	0.01
20	Iroquois (into)	2.65	0.02

ID	DAILY INDEX	PRICE	CHANGE
21	REX E-ANR	2.70	0.01
22	Leidy-Transco	1.69	0.02
23	Henry	2.77	0.03
24	Transco-85	2.78	0.02
25	Sonat-ZO South	2.75	0.01
26	FGT-Z3	2.80	0.03
27	Dominion-South	1.67	0.04
28	Transco-Z6 (non-NY)	2.52	0.07
29	Transco-Z6 (NY)	1.87	0.02
30	Iroquois-Z2	2.45	(0.26)

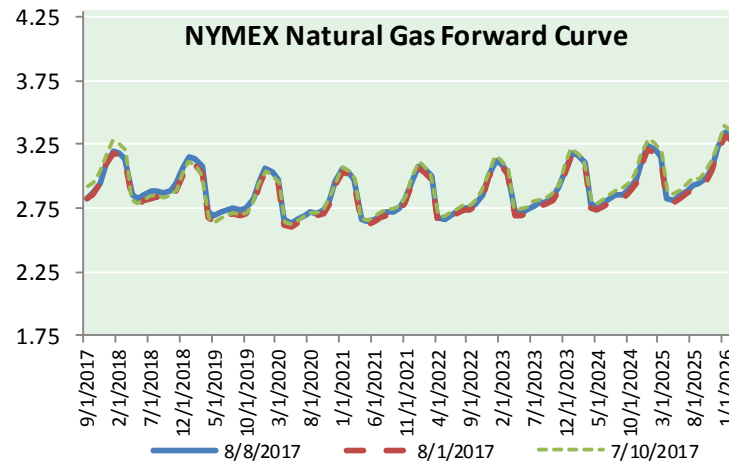
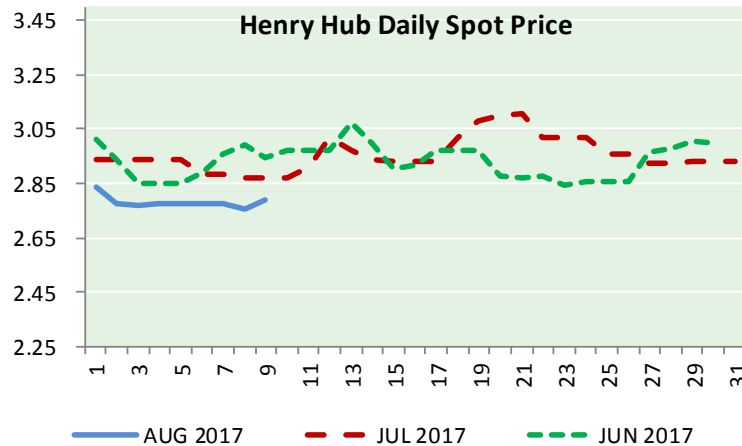
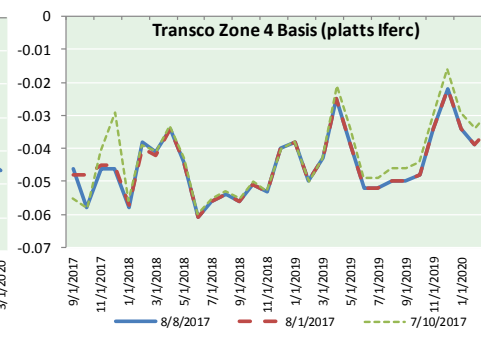
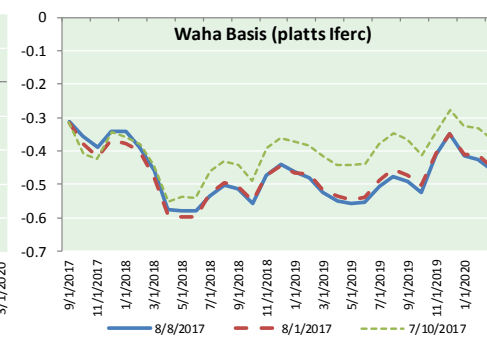
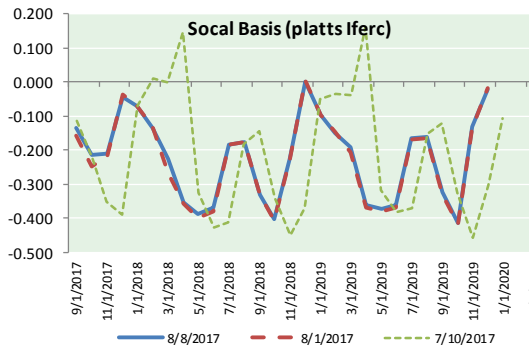
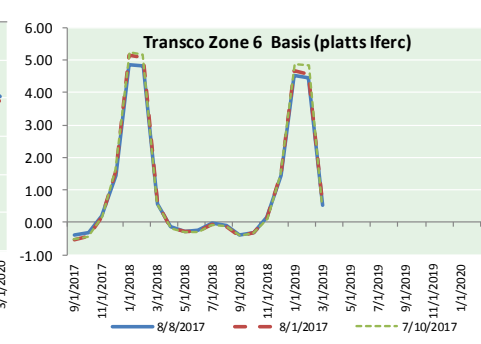
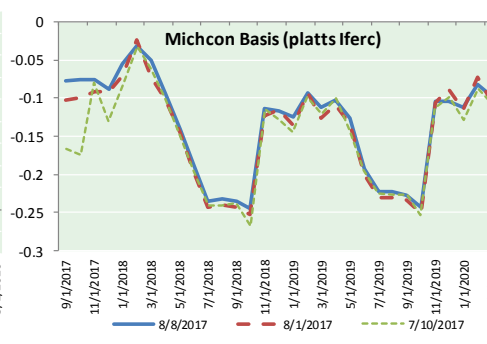
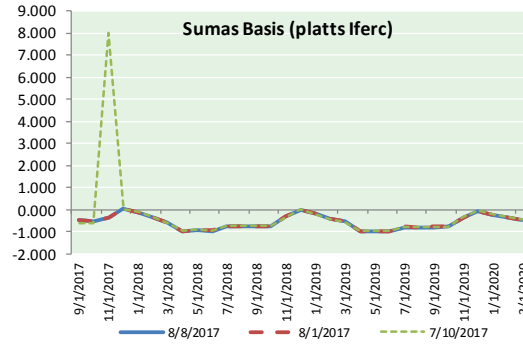
DISCLAIMER: The content herein is privileged and confidential. Content is presented for informational purposes and is a reflection of the market opinions of its authors subject to change without notice. Content is derived from sources believed to be accurate at the time of release but carries no guarantee of accuracy or completeness. Mansfield Energy Corp and its clients may or may not take positions similar or opposite those discussed herein. The reader should realize that the trading of commodities involves risk, and the reader assumes all responsibility for the risk of financial losses.





NATURAL GAS NEWS

NATURAL GAS BASIS FUTURES, HENRY HUB SPOT PRICES, AND FORWARD CURVE



CME NG Option Prices

ATM Call

Month	Strike	Close	Imp Vol
Sep-17	2.850	0.062	26.2
Oct-17	2.850	0.130	28.1
Nov-17	2.950	0.164	30.0
Dec-17	3.100	0.219	31.9
Jan-18	3.200	0.283	35.6
Feb-18			
Mar-18			
Apr-18			
May-18			
Jun-18			
Jul-18			
Aug-18			
Sep-18			
Oct-18			
Nov-18			
Dec-18			
Jan-19			

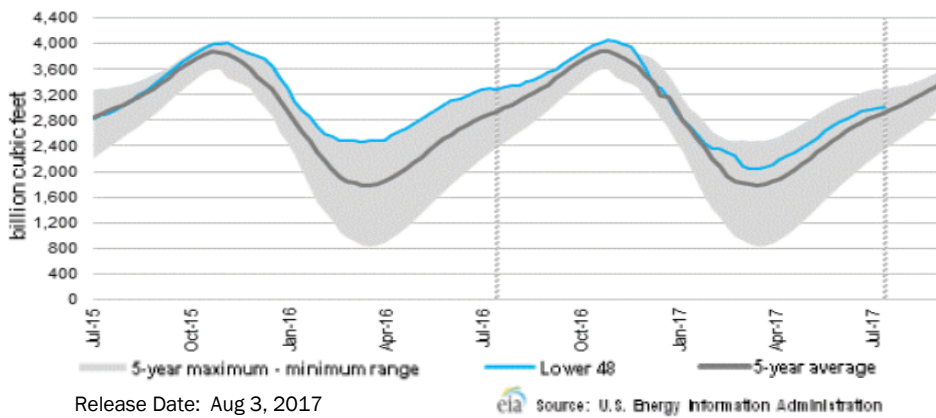
CME NG Option Prices

ATM Put

Month	Strike	Close	Imp Vol
Sep-17	2.850	0.095	33.7
Oct-17	2.850	0.121	31.9
Nov-17	2.950	0.175	31.9
Dec-17	3.100	0.230	33.7
Jan-18	3.200		
Feb-18			
Mar-18			
Apr-18			
May-18			
Jun-18			
Jul-18			
Aug-18			
Sep-18			
Oct-18			
Nov-18			
Dec-18			
Jan-19			

NATURAL GAS NEWS

WEEKLY GAS IN UNDERGROUND STORAGE WITH 5-YR RANGE



Rig Count

Report Date: August 4, 2017

	Total	Change
US -	954	(4)
CN -	217	(3)

EIA Storage History for 32nd Week of Year (Due to Report Aug 10)

Year	Week Ending	BCF
2013	Aug 09, 2013	+67
2014	Aug 08, 2014	+79
2015	Aug 07, 2015	+65
2016	Aug 05, 2016	+29
ESTIMATE -		+35

Total Working Gas In Storage

3,010 BCF

- +20 BCF (LAST WEEK)
- (279) BCF (LAST YEAR)
- +87 BCF (5-YR AVG)

U.S. Natural Gas Supply Gas Week 7/27 - 8/2

Average daily values (BCF/d):
 Last Year (BCF/d)
 Dry Production — +71.9
 Total Supply — +79.0
 Last Week (BCF/d)
 Dry Production — +72.7
 Total Supply — +78.8

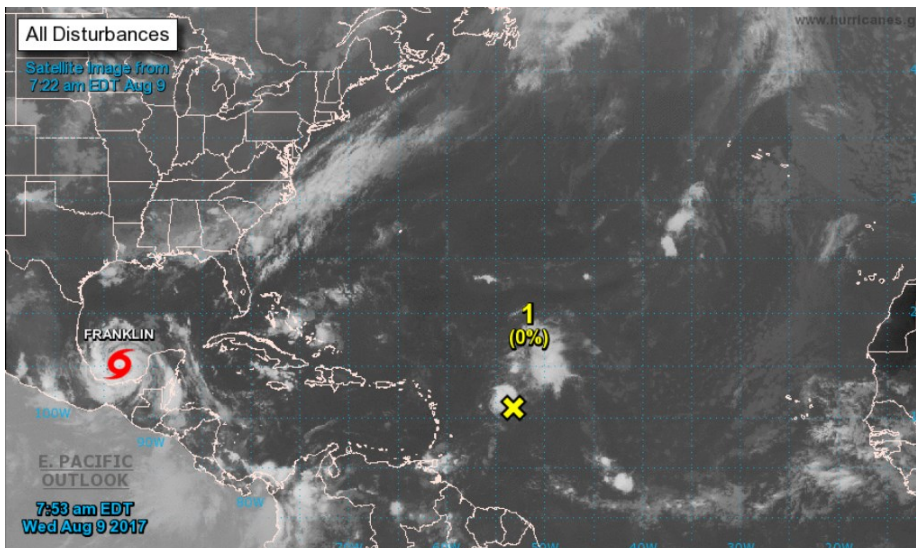
[NEXT REPORT ON AUG 10]

U.S. Natural Gas Demand Gas Week 7/27 - 8/2

Average daily values (BCF/d):
 Last Year (BCF/d)
 Power — +37.8
 Total Demand — +76.2
 Last Week (BCF/d)
 Power — +37.6
 Total Demand — +74.6

[NEXT REPORT ON AUG 10]

TROPICAL STORM ACTIVITY— ATLANTIC

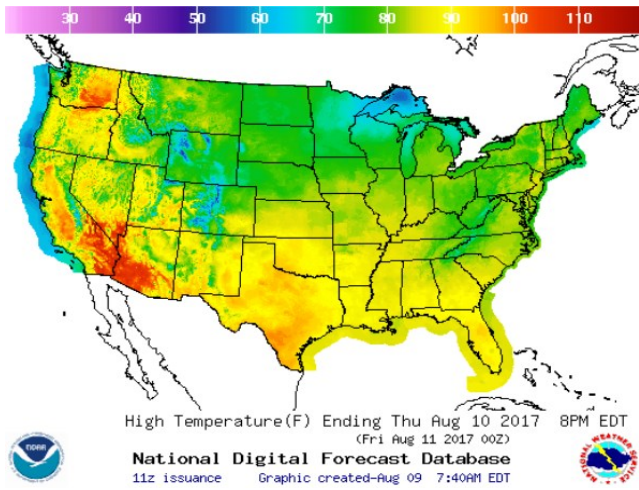


FRANKLIN

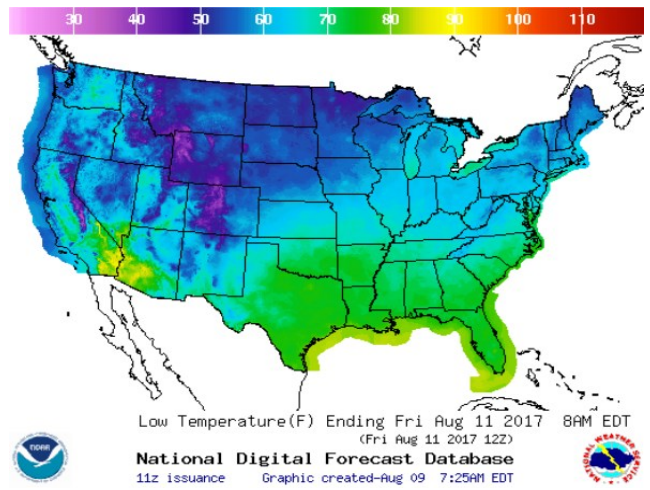


WEATHER – HIGH / LOW TEMPERATURE TOMORROW

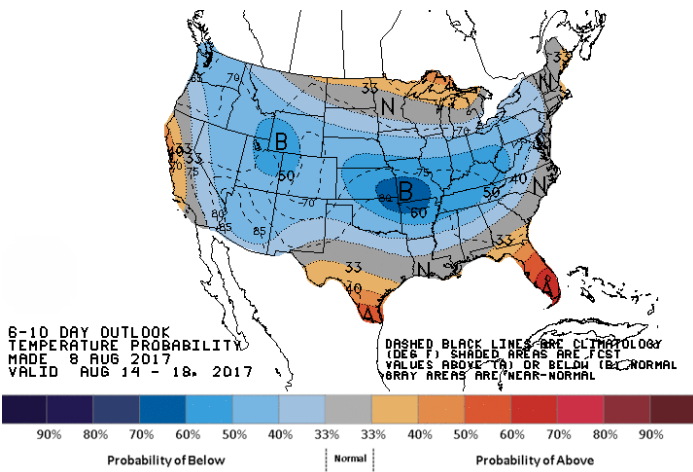
HIGH Temperature



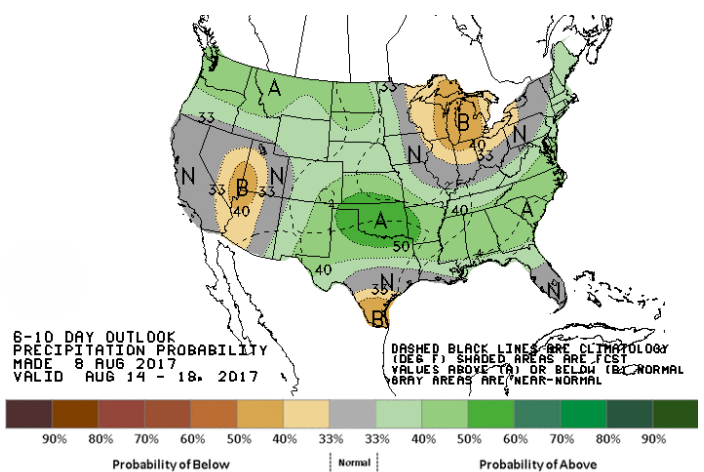
LOW Temperature



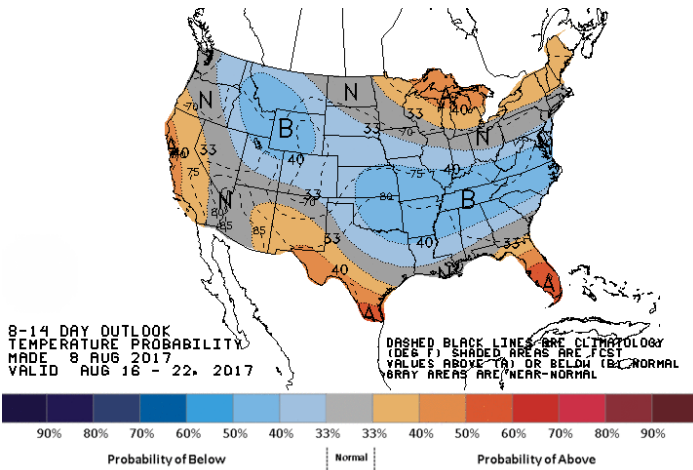
WEATHER – 6 TO 10 DAY OUTLOOK – NOAA
Temperature



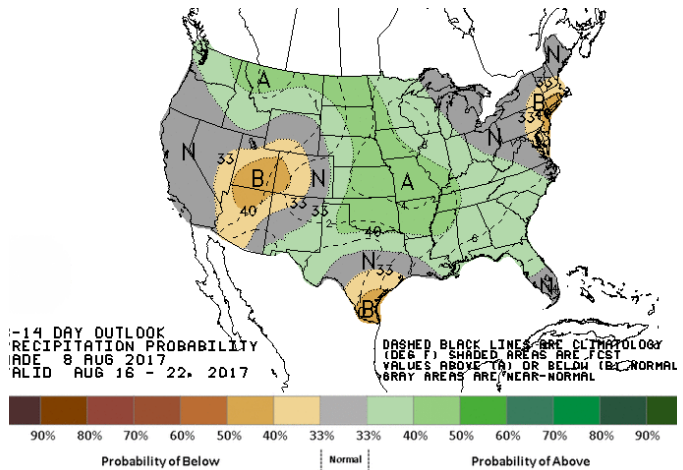
Precipitation



WEATHER – 8 TO 14 DAY OUTLOOK – NOAA
Temperature



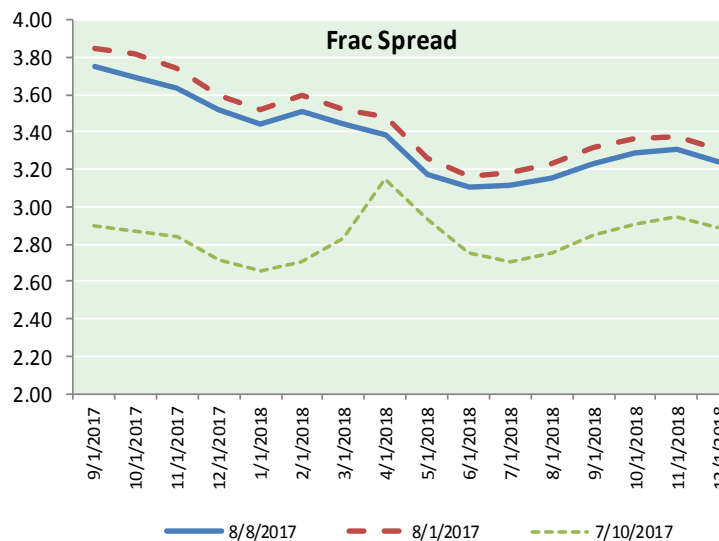
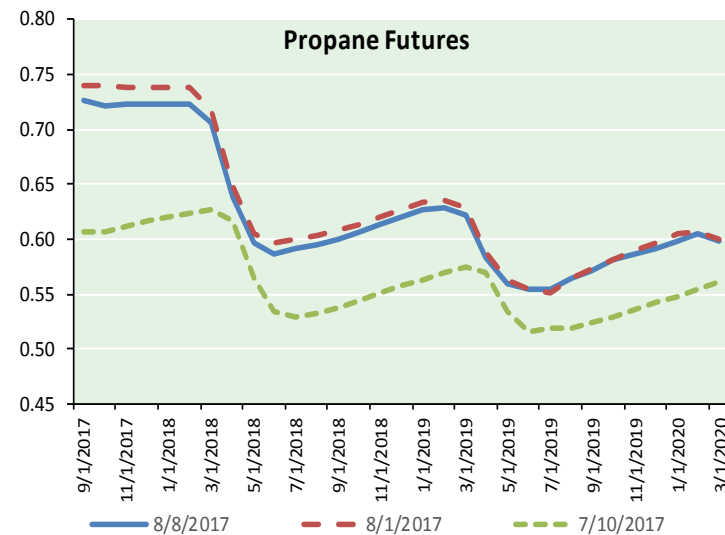
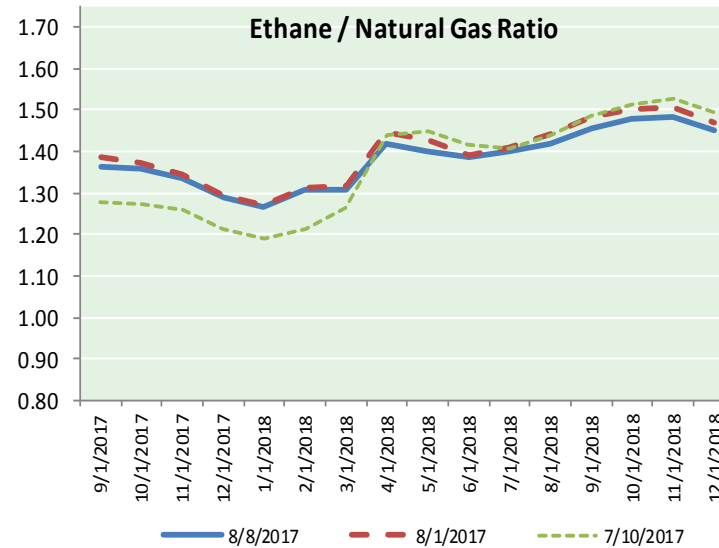
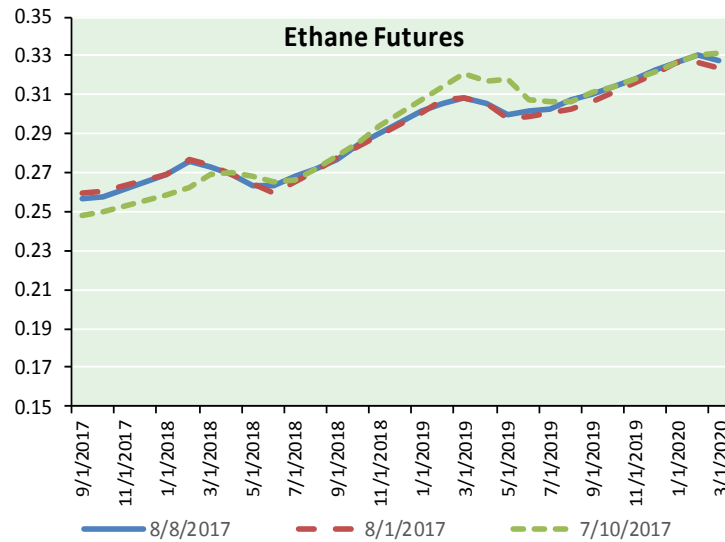
Precipitation





NATURAL GAS NEWS

ETHANE FUTURES, NG/ETHANE RATIO, PROPANE FUTURES, AND THE FRAC SPREAD



CME Future Prices

Ethane (C2)

Non-LDH— Mont Belvieu

(cents/gallon)		
Month	Close	Change
Sep-17	0.256	(0.001)
Oct-17	0.258	(0.001)
Nov-17	0.261	(0.002)
Dec-17	0.265	(0.002)
Jan-18	0.269	(0.002)
Feb-18	0.276	(0.001)
Mar-18	0.273	(0.001)
Apr-18	0.269	(0.002)
May-18	0.264	(0.001)
Jun-18	0.264	0.002
Jul-18	0.268	0.000
Aug-18	0.272	(0.001)

1YR Strip 0.266 (0.001)

CME Future Prices

Propane (C3)

Non-LDH— Mont Belvieu

(cents/gallon)		
Month	Close	Change
Sep-17	0.727	(0.005)
Oct-17	0.722	(0.006)
Nov-17	0.723	(0.005)
Dec-17	0.723	(0.005)
Jan-18	0.723	(0.005)
Feb-18	0.723	(0.004)
Mar-18	0.706	(0.004)
Apr-18	0.639	(0.006)
May-18	0.597	(0.006)
Jun-18	0.587	(0.006)
Jul-18	0.591	(0.006)
Aug-18	0.595	(0.006)

1YR Strip 0.671 (0.005)

NATURAL GAS NEWS



Prompt WTI (CL) Crude Daily Sentiment

BEARISH



RESISTANCE
49.69 & 50.20
SUPPORT
48.76 & 48.34

FOLLOW US ON TWITTER:



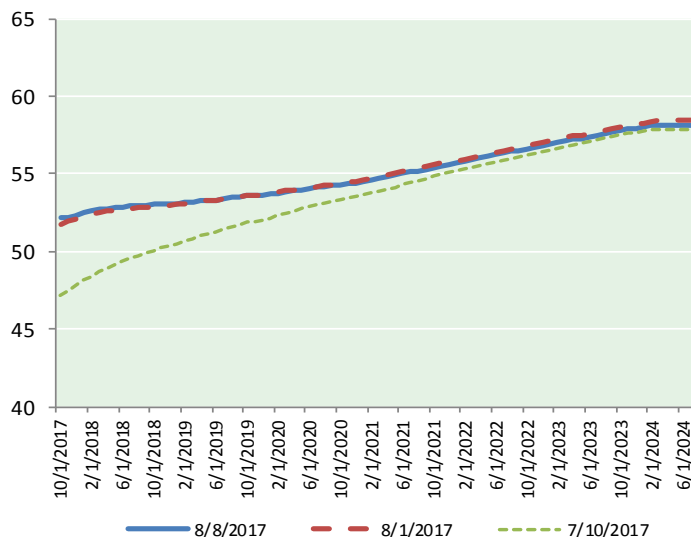
@MPG_NatGasNews

NYMEX Brent (BZ)

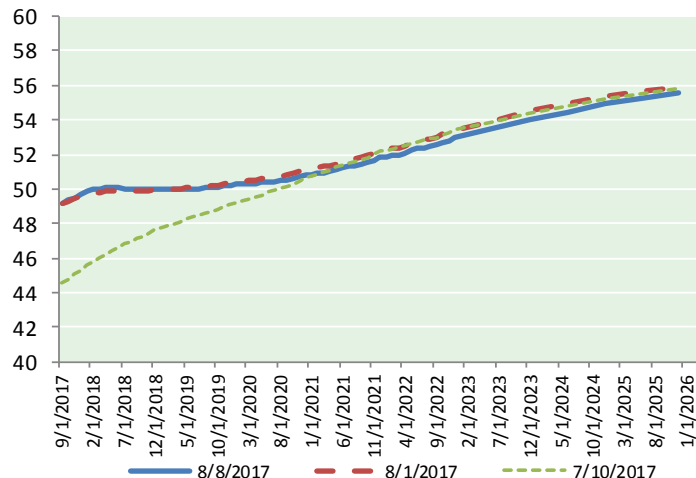
Futures

Month	Close	Change
Oct-17	52.14	(0.23)
Nov-17	52.19	(0.23)
Dec-17	52.34	(0.23)
Jan-18	52.49	(0.22)
Feb-18	52.63	(0.21)
Mar-18	52.73	(0.21)
Apr-18	52.79	(0.21)
May-18	52.84	(0.22)
Jun-18	52.89	(0.22)
Jul-18	52.95	(0.22)
Aug-18	52.99	(0.22)
Sep-18	53.01	(0.23)
Oct-18	53.03	(0.23)
Nov-18	53.04	(0.24)
Dec-18	53.06	(0.25)
Jan-19	53.10	(0.25)
Feb-19	53.16	(0.25)
Mar-19	53.21	(0.26)
Apr-19	53.29	(0.27)
May-19	53.32	(0.28)
Jun-19	53.33	(0.28)
Jul-19	53.40	(0.29)
Aug-19	53.46	(0.29)
Sep-19	53.52	(0.29)
1YR Strip	52.67	(0.22)
2017	52.22	(0.23)
5YR Strip	54.14	(0.28)

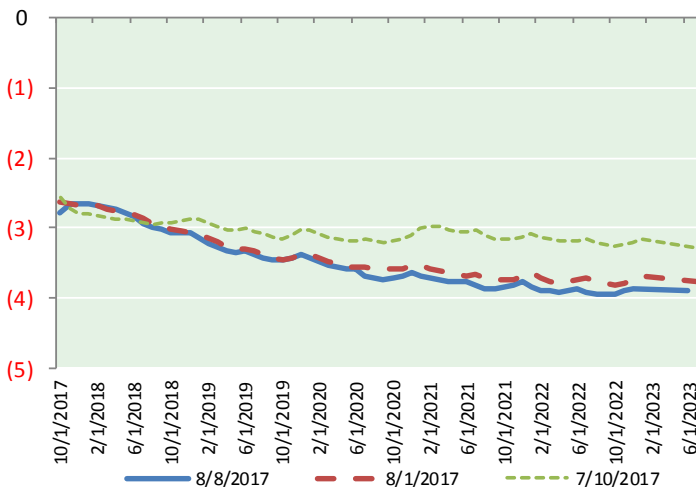
BRENT CRUDE FORWARD CURVE



WTI CRUDE FORWARD CURVE



WTI-BRENT SPREAD



FRAC Spread

Specifications

Ethane : 42% 66,500 btu/g
Propane: 28% 90,830 btu/g
Butane: 11% 102,916 btu/g
Iso-Butane: 6% 98,935 btu/g
Natural Gasoline: 13%
115,021 btu/g

Prompt NGL Futures

(\$/gallon)

	Sep-17	Close	Change
Butane	0.864	(0.006)	
Iso-Butane	0.882	(0.001)	
Nat Gasoline	1.112	(0.005)	

NYMEX WTI (CL) Futures

Month	Close	Change
Sep-17	49.17	(0.22)
Oct-17	49.35	(0.22)
Nov-17	49.52	(0.23)
Dec-17	49.68	(0.24)
Jan-18	49.84	(0.23)
Feb-18	49.95	(0.22)
Mar-18	50.01	(0.23)
Apr-18	50.05	(0.23)
May-18	50.06	(0.24)
Jun-18	50.05	(0.25)
Jul-18	50.02	(0.26)
Aug-18	50.00	(0.25)
Sep-18	49.98	(0.24)
Oct-18	49.97	(0.24)
Nov-18	49.96	(0.25)
Dec-18	49.98	(0.25)
Jan-19	49.96	(0.25)
Feb-19	49.94	(0.26)
Mar-19	49.94	(0.27)
Apr-19	49.95	(0.28)
May-19	49.97	(0.29)
Jun-19	50.01	(0.29)
Jul-19	50.02	(0.29)
Aug-19	50.04	(0.29)
1YR Strip	49.81	(0.24)
2017	49.43	(0.23)
5YR Strip	50.62	(0.33)