

NATURAL GAS



AUGUST 7, 2018

Prior Day's NYMEX Sep-18 Contract (CT)



NYMEX NG Futures

Month	Close	Change
Sep-18	2.860	0.007
Oct-18	2.866	0.004
Nov-18	2.903	0.005
Dec-18	3.003	0.005
Jan-19	3.090	0.008
Feb-19	3.052	0.007
Mar-19	2.947	0.006
Apr-19	2.634	0.008
May-19	2.604	0.009
Jun-19	2.632	0.008
Jul-19	2.664	0.007
Aug-19	2.669	0.007
Sep-19	2.651	0.007
Oct-19	2.667	0.008
Nov-19	2.716	0.008
Dec-19	2.843	0.009
Jan-20	2.938	0.009
Feb-20	2.898	0.006
Mar-20	2.795	0.006
Apr-20	2.496	0.000
May-20	2.458	(0.002)
Jun-20	2.486	(0.003)
Jul-20	2.516	(0.003)
Aug-20	2.523	(0.003)
1YR Strip	2.827	0.007
2018	2.908	0.005
5YR Strip	2.649	(0.007)

IN THE NEWS

US appeals court vacates permit for Atlantic Coast natural gas pipeline to cross Blue Ridge Parkway— S&P Global Platts reported: Presenting a further legal hurdle to the Atlantic Coast Pipeline natural gas project, the US 4th Circuit Court of Appeals on Monday vacated a permit the National Park Service issued that allowed the pipeline to cross under the scenic Blue Ridge Park-

- **US appeals court vacates permit for Atlantic Coast natural gas pipeline to cross Blue Ridge Parkway**
- **Homes and business evacuated after gas line ruptured**

way. The court also fleshed out reasoning for its May order vacating a Fish and Wildlife Service permit that authorized harm to threatened or endangered species from the construction. The 600-mile, 1.5 Bcf/d pipeline project, stretching from Harrison County, West Virginia, to Virginia and North Carolina, is part of a batch of projects totaling 6.5 Bcf/d in capacity that would take Appalachian supply to downstream markets in the Mid-Atlantic region. Like the neighboring Mountain Valley Pipeline, its permits to cross forested, mountainous areas have been the target of legal challenges from environmentalists. For more on this story visit [spglobal.com](https://bit.ly/2vJpzLD) or click <https://bit.ly/2vJpzLD>

Homes and business evacuated after gas line ruptured—Lima Ohio reported: Four homes and one business on the northern edge of Lima were evacuated briefly on Monday after a gas line was struck and ruptured. The incident occurred at approximately 11:45 a.m. on North West Street near the intersection of Northern Avenue. Crews from the city of Lima reportedly were doing excavation work as part of an ongoing highway project in the area when the gas line was ruptured, according to Peggy Ehora, external affairs manager for Dominion Energy. "It happens, especially when you have a lot of utilities working within a small easement area," Ehora said of the accident. "The evacuations were ordered by the fire department as a safety measure. Safety is first and foremost for us (the gas company) and fortunately no one was hurt. Secondly, there was no interruption of service to our customers," who were serviced by an alternate gas line. For more on this story visit [limaohio.com](https://bit.ly/2KyWXKo) or click <https://bit.ly/2KyWXKo>

12 MONTH CANDLESTICK (WEEKLY)



Prompt Natural Gas (NG) Daily Sentiment

BULLISH



RESISTANCE

2.88 & 2.89

SUPPORT

2.83 & 2.81

Trading Summary

NATURAL GAS

Futures	Close	Change
NG	2.860	0.007
Volume	274,861	(209,617)
Open Int.	1,578,794	5,584

CRUDE AND GASOLINE

Futures	Close	Change
Crude	69.01	0.52
RBOB	2.0651	(0.0004)
Crude/NG	24.13	0.12

METALS

Futures	Close	Change
Gold	1,208.60	5.70

EQUITIES

Exchange	Close	Change
DOW	25,502.18	39.60
S&P 500	-1,569.42	10.05

CURRENCY

Currency	Close	Change
EUR/USD	1.1604	0.0050
USD/CND	1.2405	(0.0030)

Contact Us



Mansfield Energy Corp
1025 Airport Pkwy
Gainesville, GA 30501
www.mansfield.energy
info@mansfieldoil.com

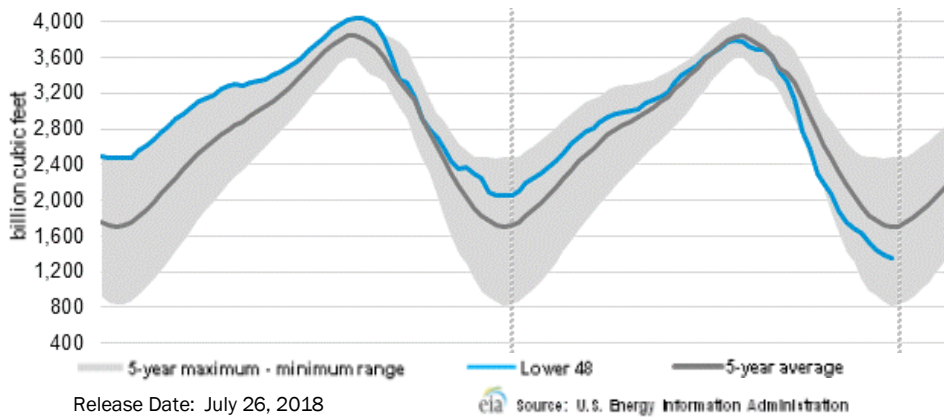
Phone: (800) 695-6626





NATURAL GAS NEWS

WEEKLY GAS IN UNDERGROUND STORAGE WITH 5-YR RANGE



Rig Count

Report Date: July 27, 2018

	Total	Change
US -	1048	+2
CN -	223	+12

EIA Weekly NG Storage Actual and Surveys for August 3, 2018

Released July 26, 2018

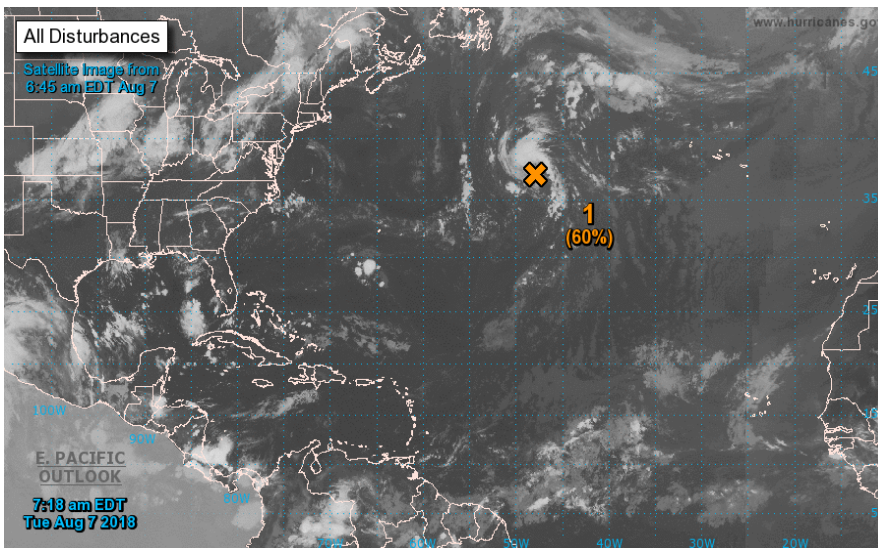
Range (35) to (74)

PIRA – (40)

Citi Futures – (44)

Reuters – (41)

TROPICAL STORM ACTIVITY— ATLANTIC



Tropical Weather Outlook
 NWS National Hurricane Center Miami FL
 800 AM EDT Tue Aug 7 2018

For the North Atlantic...Caribbean Sea and the Gulf of Mexico:

1. Early visible satellite images indicate that the shower activity associated with a non-tropical low pressure system located a little more than 900 miles west-southwest of the Azores continues to show some signs of organization. Although the shower activity has decreased somewhat during the past few hours, this system could still acquire subtropical or tropical characteristics later today. By Wednesday, however, the low will encounter increasingly cooler waters, which will hinder development while the system moves toward the north-northeast over the open North Atlantic. Additional information on this system can be found in High Seas Forecasts issued by the National Weather Service.

* Formation chance through 48 hours...medium...60 percent.

* Formation chance through 5 days...medium...60 percent.

Total Working Gas In Storage

2,308 BCF

35 BCF (LAST WEEK)
 (668) BCF (LAST YEAR)
 (565) BCF (5-YR AVG)

U.S. Natural Gas Supply Gas Week 7/26 – 8/1

Average daily values (BCF/D):

Last Year (BCF/d)

Dry Production – +73.4

Total Supply – +79.3

Last Week (BCF/d)

Dry Production – +81.0

Total Supply – +86.6

[NEXT REPORT ON Aug 10]

U.S. Natural Gas Demand Gas Week 7/26 – 8/1

Average daily values (BCF/d):

Last Year (BCF/d)

Power – +34.4

Total Demand – +73.3

Last Week (BCF/d)

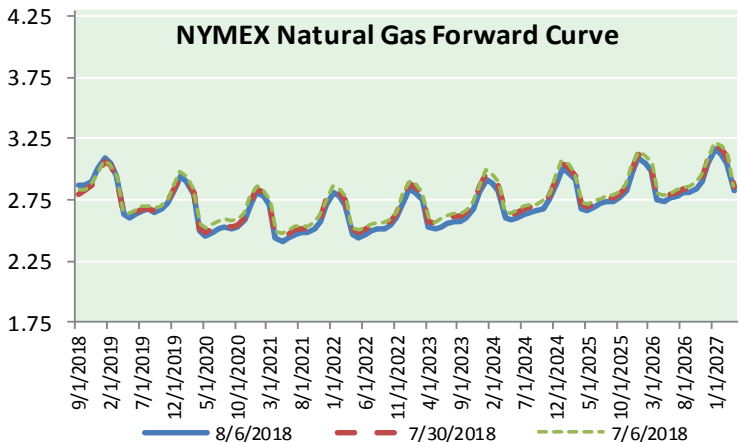
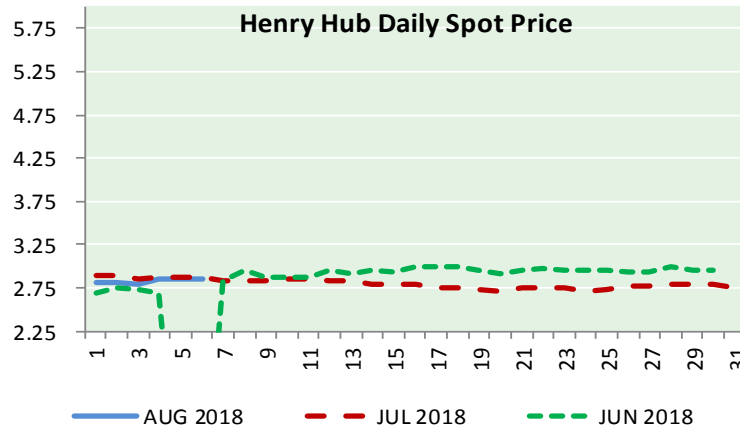
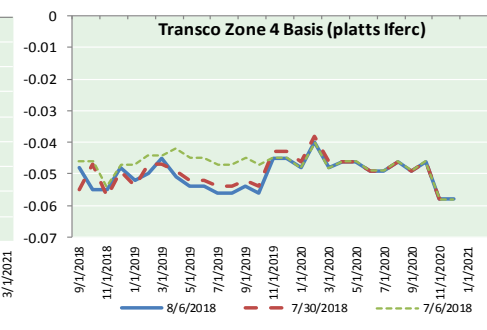
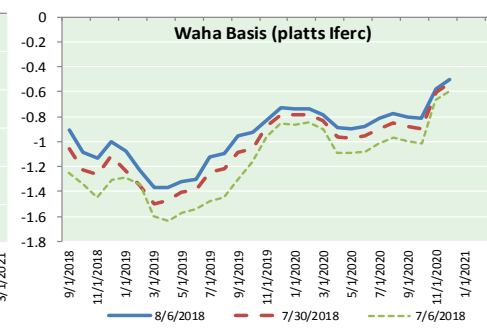
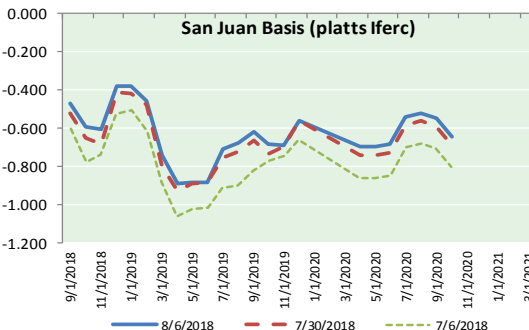
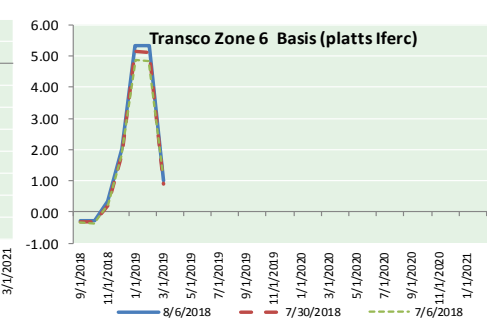
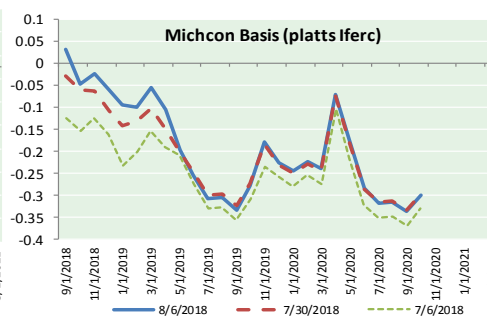
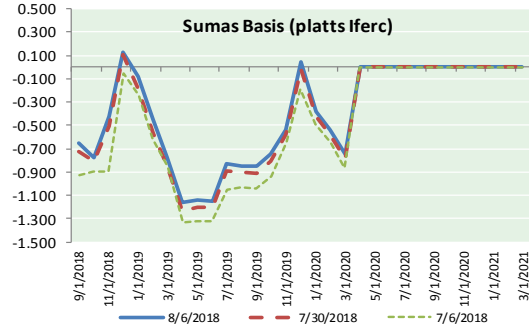
Power – +36.8

Total Demand – +78.9

[NEXT REPORT ON Aug 10]



NATURAL GAS BASIS FUTURES, HENRY HUB SPOT PRICES, AND FORWARD CURVE



NYMEX WTI Delivery

Month Average (\$/bbl)

(Excluding Weekends and Holidays)

Month: August 2018

Day	Price	Day	Price
1	67.66	16	
2	68.96	17	
3	68.49	18	
4		19	
5		20	
6	69.01	21	
7		22	
8		23	
9		24	
10		25	
11		26	
12		27	
13		28	
14		29	
15		30	
		31	

Average (Aug) 68.5300
(through 08/06/2018)

Average (Jul) 70.5819

Average (Jun) 67.3229

CME NG Option Prices

ATM Call

Month	Strike	Close	Imp	Vol
Oct-18				
Nov-18	2.900	0.091		22.5
Dec-18				
Jan-19				
Feb-19				

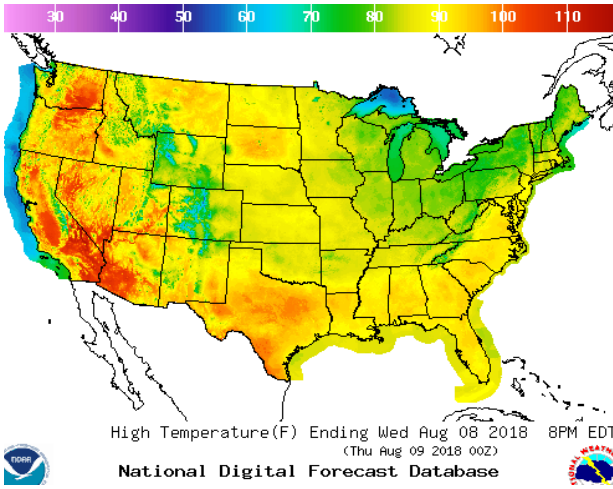
CME NG Option Prices

ATM Put

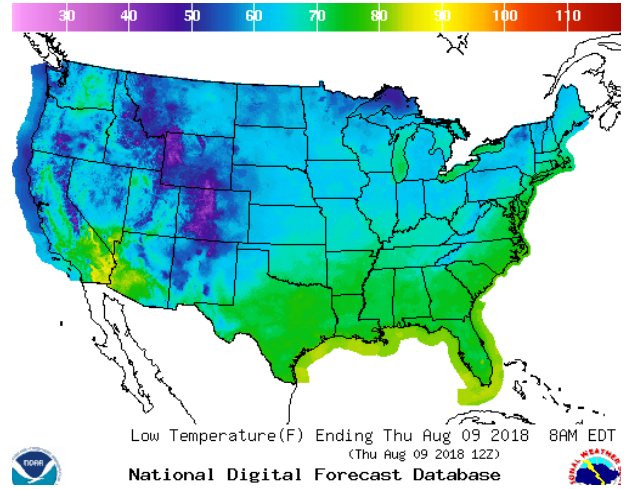
Month	Strike	Close	Imp	Vol
Oct-18				
Nov-18	2.900	0.109		24.3
Dec-18				
Jan-19				
Feb-19				

WEATHER – HIGH / LOW TEMPERATURE TOMORROW

HIGH Temperature

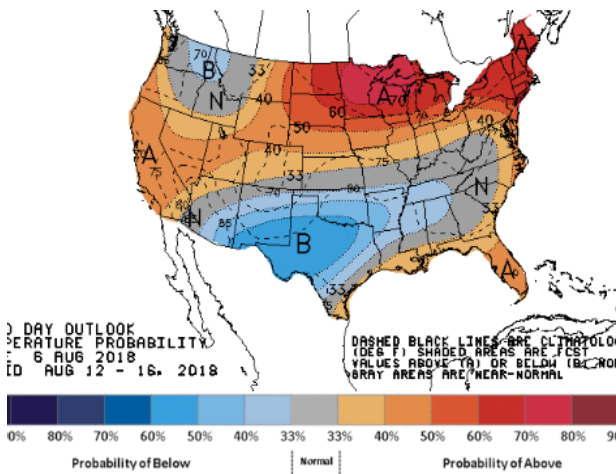


LOW Temperature

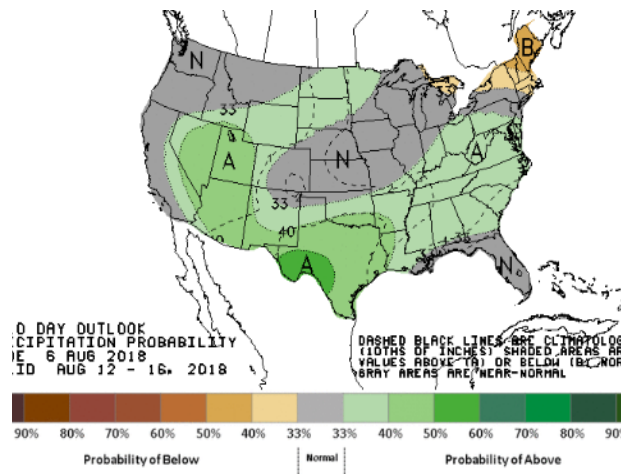


WEATHER – 6 TO 10 DAY OUTLOOK – NOAA

Temperature

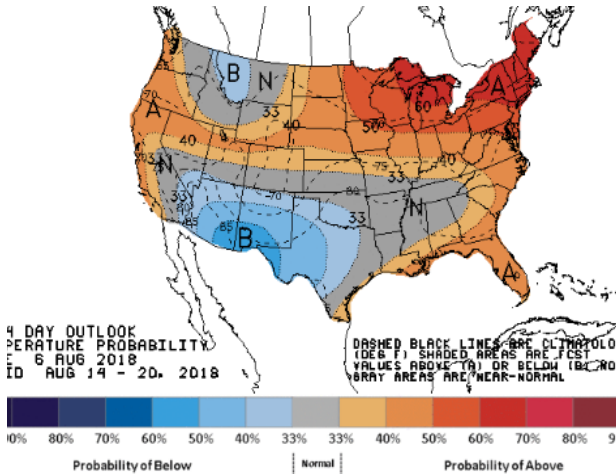


Precipitation

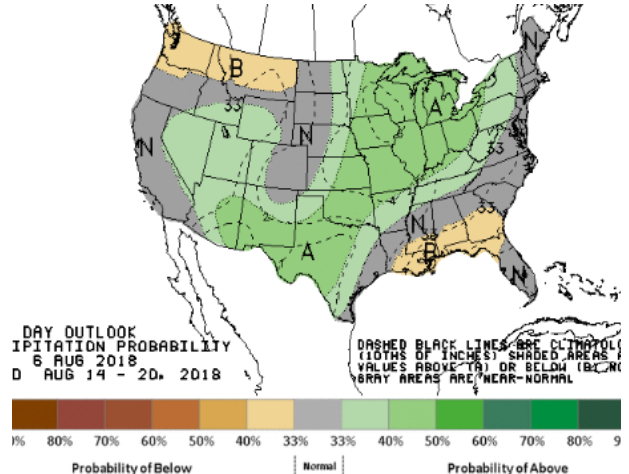


WEATHER – 8 TO 14 DAY OUTLOOK – NOAA

Temperature



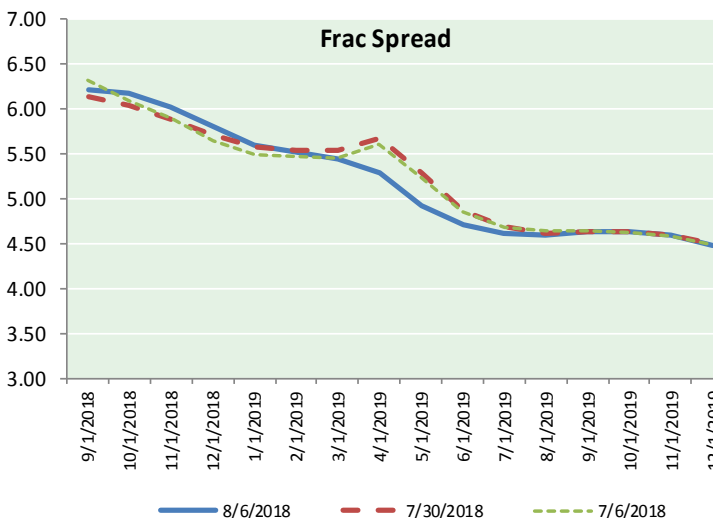
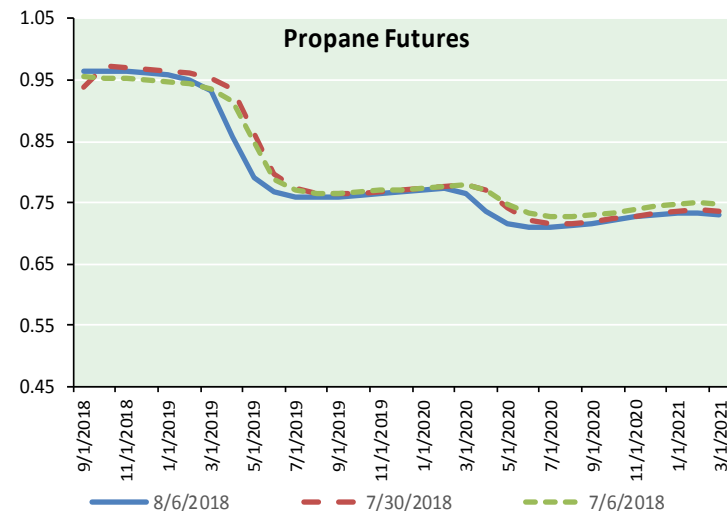
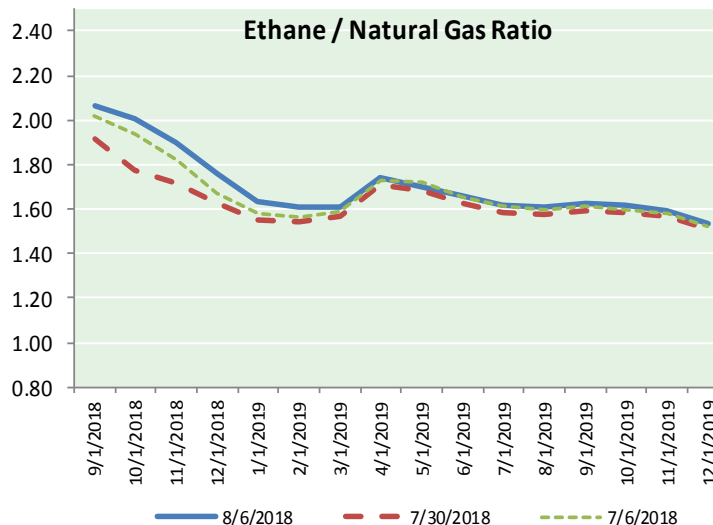
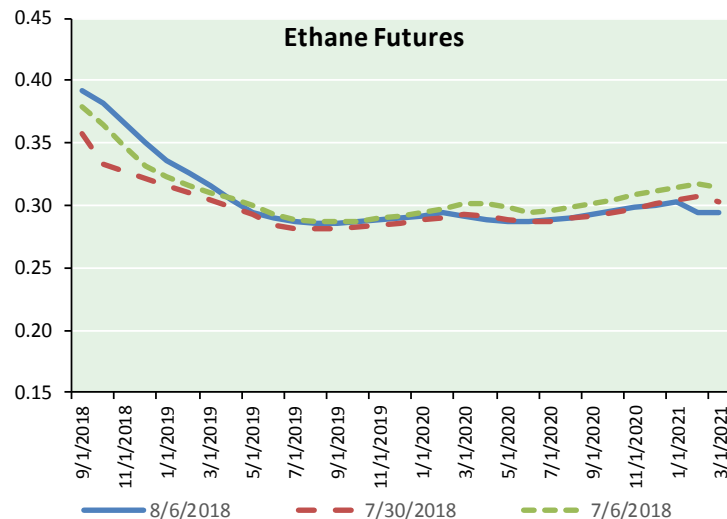
Precipitation





NATURAL GAS NEWS

ETHANE FUTURES, NG/ETHANE RATIO, PROPANE FUTURES, AND THE FRAC SPREAD



CME Future Prices

Ethane (C2)

Non-LDH— Mont Belvieu

Month	Close	Change
Sep-18	0.392	0.006
Oct-18	0.383	0.009
Nov-18	0.367	0.011
Dec-18	0.351	0.011
Jan-19	0.336	0.009
Feb-19	0.326	0.006
Mar-19	0.315	0.004
Apr-19	0.305	0.002
May-19	0.295	0.002
Jun-19	0.290	0.003
Jul-19	0.287	0.002
Aug-19	0.286	0.002

1YR Strip 0.328 0.006

CME Future Prices

Propane (C3)

Non-LDH— Mont Belvieu

Month	Close	Change
Sep-18	0.964	0.013
Oct-18	0.965	0.015
Nov-18	0.964	0.015
Dec-18	0.962	0.015
Jan-19	0.959	0.015
Feb-19	0.949	0.015
Mar-19	0.933	0.013
Apr-19	0.858	0.012
May-19	0.792	0.011
Jun-19	0.767	0.010
Jul-19	0.758	0.010
Aug-19	0.758	0.010

1YR Strip 0.886 0.013

NATURAL GAS NEWS



Prompt WTI (CL) Crude

Daily Sentiment

BULLISH



RESISTANCE

69.79 & 70.56

SUPPORT

68.37 & 67.72

FOLLOW US ON TWITTER:



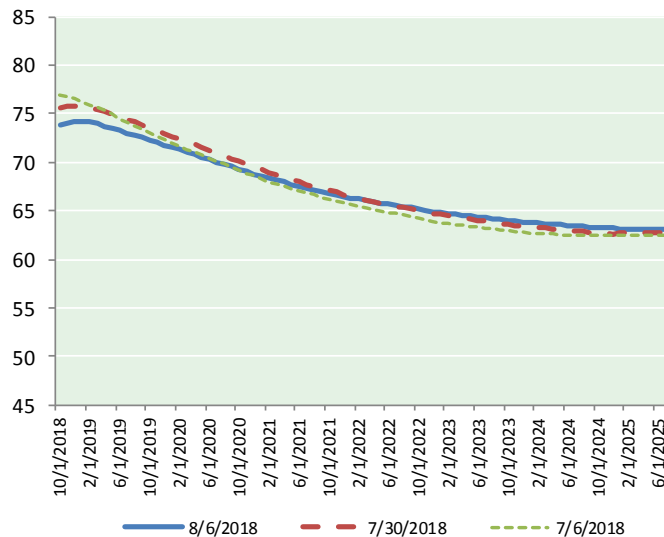
@MPG_NatGasNews

NYMEX Brent (BZ)

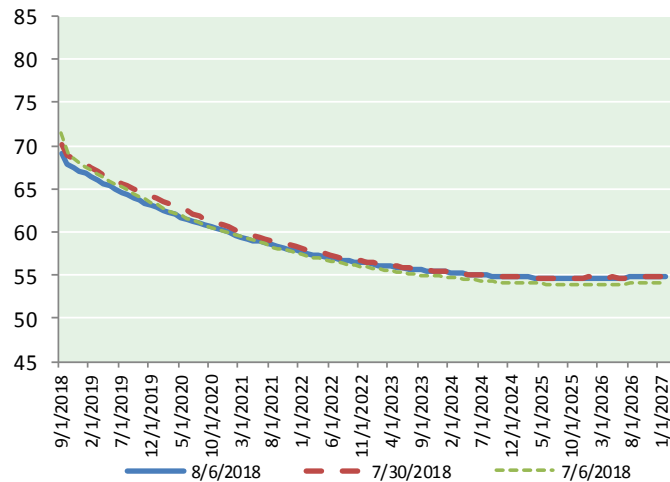
Futures

Month	Close	Change
Oct-18	73.75	0.54
Nov-18	74.07	0.54
Dec-18	74.20	0.57
Jan-19	74.21	0.59
Feb-19	74.12	0.60
Mar-19	73.93	0.58
Apr-19	73.73	0.56
May-19	73.51	0.55
Jun-19	73.26	0.54
Jul-19	73.03	0.55
Aug-19	72.80	0.55
Sep-19	72.56	0.56
Oct-19	72.30	0.58
Nov-19	72.06	0.59
Dec-19	71.78	0.61
Jan-20	71.52	0.61
Feb-20	71.28	0.62
Mar-20	71.03	0.63
Apr-20	70.77	0.63
May-20	70.53	0.63
Jun-20	70.29	0.63
Jul-20	70.04	0.63
Aug-20	69.79	0.63
Sep-20	69.54	0.63
1YR Strip	73.60	0.56
2018	74.01	0.55
5YR Strip	68.55	0.62

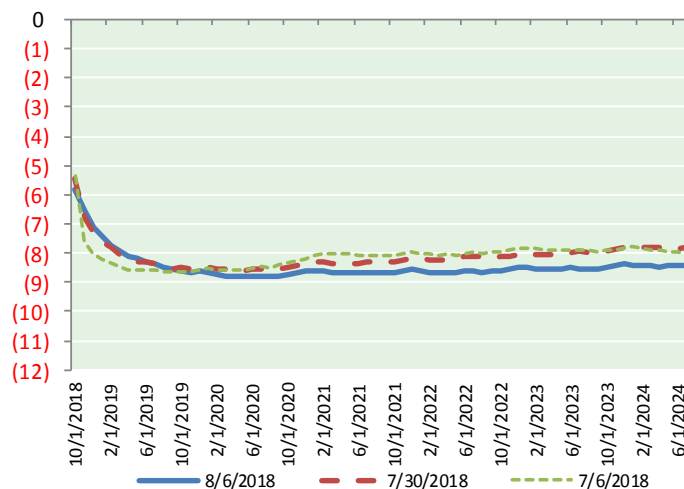
BRENT CRUDE FORWARD CURVE



WTI CRUDE FORWARD CURVE



WTI-BRENT SPREAD



FRAC Spread

Specifications

Ethane :	42%	66,500 btu/g
Propane:	28%	90,830 btu/g
Butane: 11%	102,916 btu/g	
Iso-Butane: 6%	98,935 btu/g	
Natural Gasoline: 13%		
		115,021 btu/g

Prompt NGL Futures

(\$/gallon)

Sep-18	Close	Change
Butane	1.133	0.011
Iso-Butane	1.124	(0.003)
Nat Gasoline	1.531	0.004

NYMEX WTI (CL) Futures

Month	Close	Change
Sep-18	69.01	0.52
Oct-18	67.94	0.59
Nov-18	67.48	0.55
Dec-18	67.10	0.51
Jan-19	66.80	0.51
Feb-19	66.37	0.50
Mar-19	65.98	0.48
Apr-19	65.63	0.47
May-19	65.31	0.45
Jun-19	64.99	0.45
Jul-19	64.64	0.43
Aug-19	64.30	0.42
Sep-19	63.99	0.42
Oct-19	63.70	0.43
Nov-19	63.41	0.42
Dec-19	63.15	0.43
Jan-20	62.82	0.43
Feb-20	62.52	0.44
Mar-20	62.24	0.44
Apr-20	61.98	0.44
May-20	61.74	0.43
Jun-20	61.51	0.43
Jul-20	61.23	0.41
Aug-20	60.99	0.41
1YR Strip	66.30	0.49
2018	67.88	0.54
5YR Strip	60.26	0.42