

NATURAL GAS



AUGUST 28, 2017

Prior Day's NYMEX Sep-17 Contract (CT)



NYMEX NG Futures

Month	Close	Change
Sep-17	2.892	(0.057)
Oct-17	2.924	(0.058)
Nov-17	2.997	(0.056)
Dec-17	3.140	(0.053)
Jan-18	3.240	(0.048)
Feb-18	3.238	(0.045)
Mar-18	3.201	(0.043)
Apr-18	2.886	(0.025)
May-18	2.855	(0.020)
Jun-18	2.880	(0.018)
Jul-18	2.905	(0.017)
Aug-18	2.907	(0.018)
Sep-18	2.884	(0.017)
Oct-18	2.902	(0.017)
Nov-18	2.950	(0.016)
Dec-18	3.077	(0.015)
Jan-19	3.160	(0.014)
Feb-19	3.135	(0.013)
Mar-19	3.070	(0.011)
Apr-19	2.697	(0.009)
May-19	2.664	(0.009)
Jun-19	2.686	(0.008)
Jul-19	2.709	(0.007)
Aug-19	2.713	(0.007)
1YR Strip	3.005	(0.038)
2017	2.988	(0.056)
5YR Strip	2.825	(0.017)

IN THE NEWS

Feds okay \$2 billion natural gas line from Columbiana County Ohio to Michigan — WFMJ reported: The Federal Energy Regulatory Commission on Friday gave the green light to a plan by Nexus Gas Transmission LLC to construct the 36-inch diameter underground pipeline that would carry natural gas products from

- **Feds okay \$2 billion natural gas line from Columbiana County Ohio to Michigan**
- **Hurricane Harvey closes key oil and gas facilities in Texas**

the shale gas fields of Eastern Ohio to Michigan and Canada. The project includes five compressor stations in the Ohio including one in Hanoverton and another in Salineville. Each compressor station would take up about an acre of land in order to compress the natural gas and keep it flowing through the pipeline. The plan met with resistance from some communities along the route of the pipeline and individuals with concerns about the possible geological and environmental effects, as well as the impact on residential property values. Proposed alternate routes were rejected by the government. Supporters of the pipeline argued that the lack of a quick, convenient way to transport energy products has been restraining oil and gas production. For more visit wfmj.com or click the following link <http://bit.ly/2wbAC1L>

Hurricane Harvey closes key oil and gas facilities in Texas – CNBC reports: Key oil and gas facilities along the Texas Gulf Coast have temporarily shut down as Hurricane Harvey pounds the region with torrential rain and high winds, virtually assuring gasoline prices will rise in the storm's aftermath. Even before the Harvey made landfall late Friday, dozens of oil and gas platforms had been evacuated, at least three refineries had closed and at least two petrochemical plants had suspended operations. How soon they reopen depends on the severity of flooding and the resumption of power to the areas. Experts say it's still too early to say, with the storm still moving through the region. But they believe gas prices will increase 5 cents, to 25 cents per gallon. For more on this story visit cnbc.com or click <http://cnb.cx/2wBRXSq>

12 MONTH CANDLESTICK (WEEKLY)



Prompt Natural Gas (NG) Daily Sentiment

BEARISH



RESISTANCE
2.94 & 3.00
SUPPORT
2.86 & 2.83

Trading Summary

NATURAL GAS

Futures	Close	Change
NG	2.892	(0.057)
Volume	320,621	(58,702)
Open Int.	1,297,409	(6,572)

CRUDE AND GASOLINE

Futures	Close	Change
Crude	47.87	0.44
RBOB	1.6666	0.0025
Crude/NG	16.37	0.47

METALS

Futures	Close	Change
Gold	1,292.50	1.00

EQUITIES

Exchange	Close	Change
DOW	21,813.67	30.27
S&P 500	2,294.62	(144.35)

CURRENCY

Currency	Close	Change
EUR/USD		
USD/CND	1.2475	(0.0006)

Contact Us



Mansfield Energy Corp
1025 Airport Pkwy
Gainesville, GA 30501

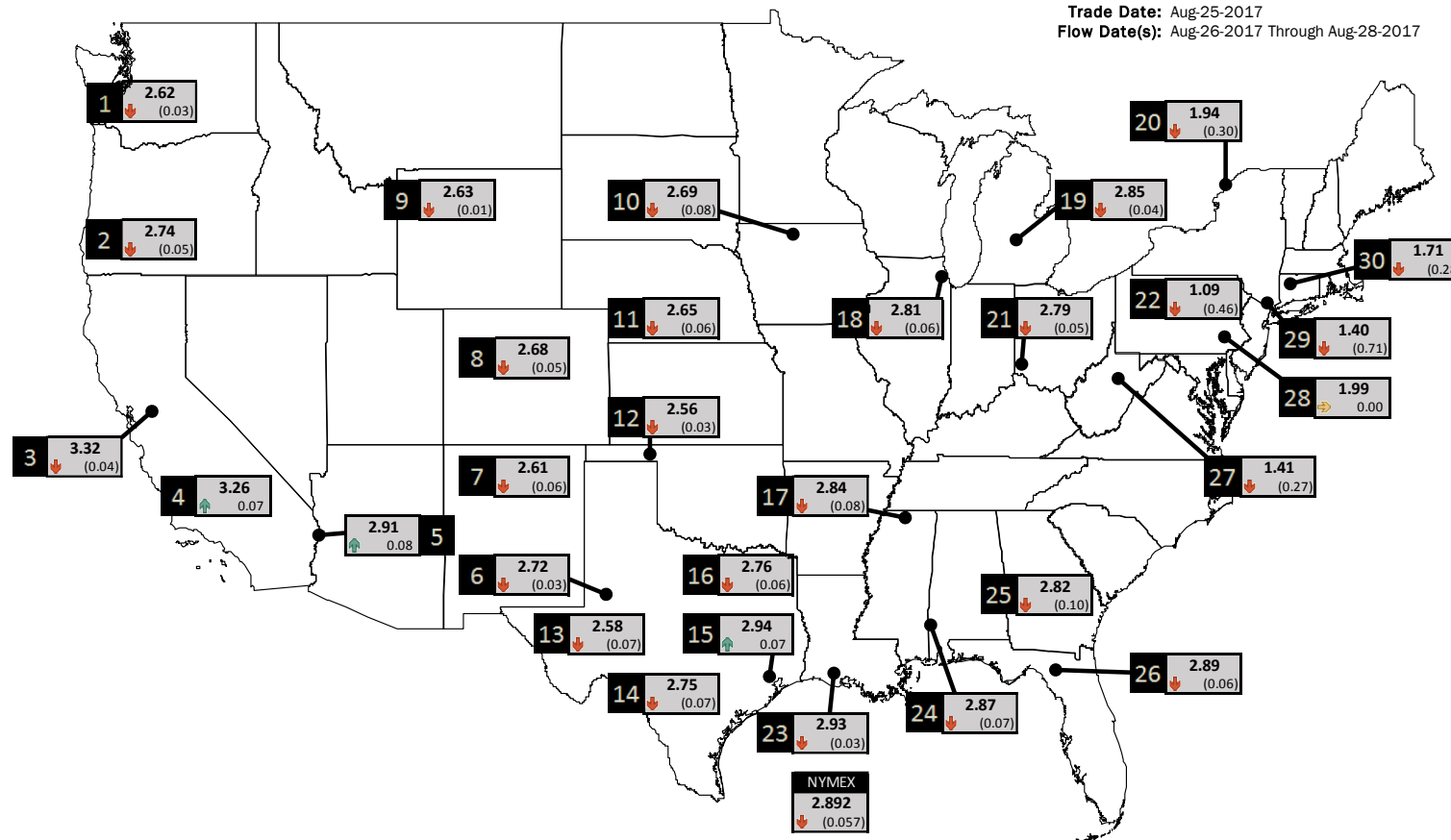
www.mansfield.energy
info@mansfieldoil.com

Phone: (800) 695-6626



NATURAL GAS NEWS

PHYSICAL SPOT NATURAL GAS PRICE MAP



ID	DAILY INDEX	PRICE	CHANGE
1	Stanfield	2.62	(0.03)
2	Malin	2.74	(0.05)
3	PG&E - Citygate	3.32	(0.04)
4	SoCal-Citygate	3.26	0.07
5	SoCal Border	2.91	0.08
6	Waha	2.72	(0.03)
7	EPSJ Blanco Pool	2.61	(0.06)
8	Opal Plant Tailgate	2.68	(0.05)
9	NWP-Wyoming	2.63	(0.01)
10	Ventura	2.69	(0.08)

ID	DAILY INDEX	PRICE	CHANGE
11	NGPL-Midcont Pool	2.65	(0.06)
12	Panhandle	2.56	(0.03)
13	EP-Permian	2.58	(0.07)
14	TGP-ZO	2.75	(0.07)
15	Houston Ship Channel	2.94	0.07
16	NGPL-TXOK	2.76	(0.06)
17	TETCO-M1 30	2.84	(0.08)
18	Chicago Citygates	2.81	(0.06)
19	Michcon	2.85	(0.04)
20	Iroquois (into)	1.94	(0.30)

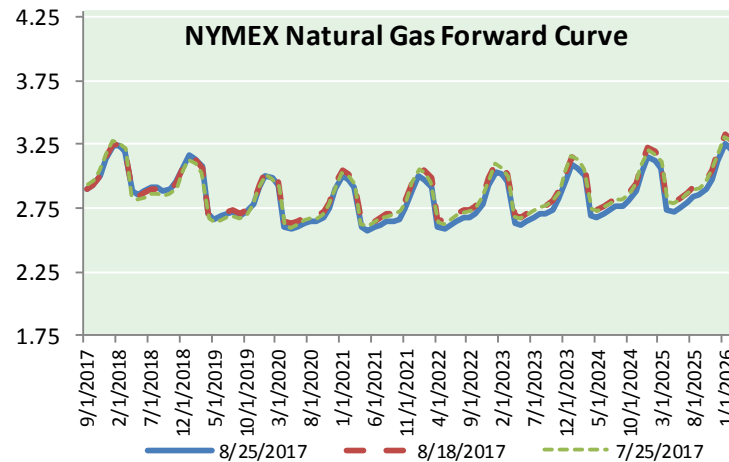
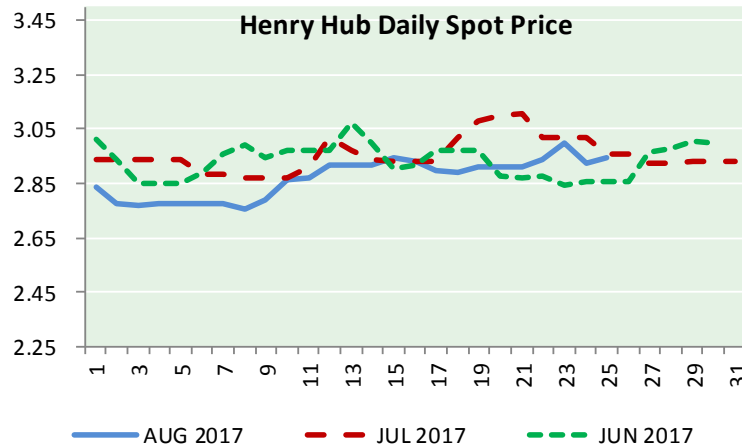
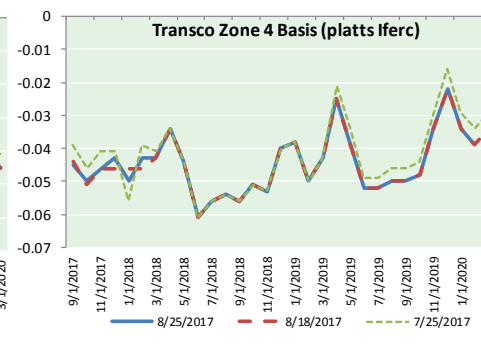
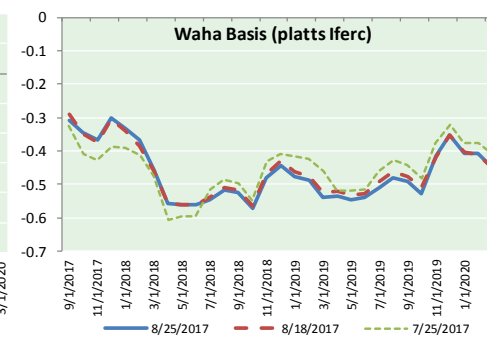
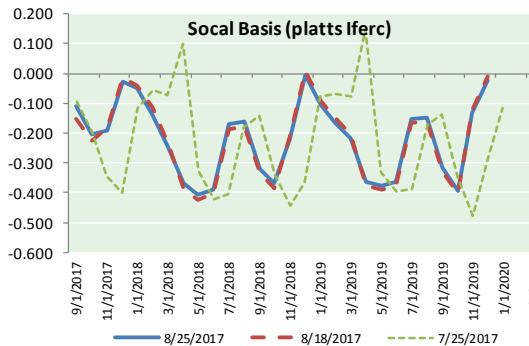
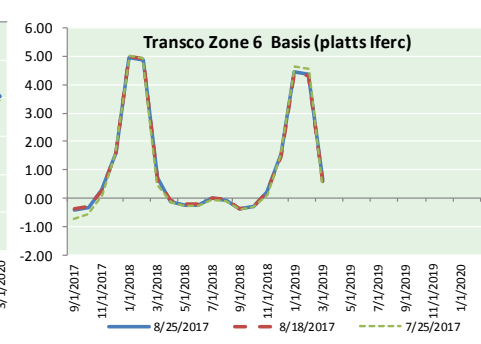
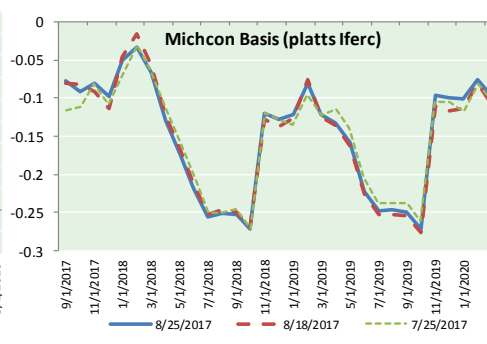
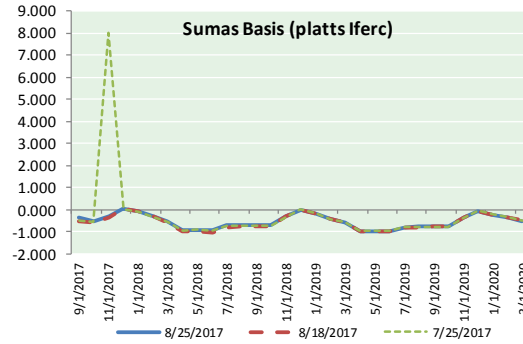
ID	DAILY INDEX	PRICE	CHANGE
21	REX E-ANR	2.79	(0.05)
22	Leidy-Transco	1.09	(0.46)
23	Henry	2.93	(0.03)
24	Transco-85	2.87	(0.07)
25	Sonat-ZO South	2.82	(0.10)
26	FGT-Z3	2.89	(0.06)
27	Dominion-South	1.41	(0.27)
28	Transco-Z6 (non-NY)	1.99	0.00
29	Transco-Z6 (NY)	1.40	(0.71)
30	Iroquois-Z2	1.71	(0.28)

DISCLAIMER: The content herein is privileged and confidential. Content is presented for informational purposes and is a reflection of the market opinions of its authors subject to change without notice. Content is derived from sources believed to be accurate at the time of release but carries no guarantee of accuracy or completeness. Mansfield Energy Corp and its clients may or may not take positions similar or opposite those discussed herein. The reader should realize that the trading of commodities involves risk, and the reader assumes all responsibility for the risk of financial losses.





NATURAL GAS BASIS FUTURES, HENRY HUB SPOT PRICES, AND FORWARD CURVE



CME NG Option Prices

ATM Call

Month	Strike	Close	Imp	Vol
Sep-17	2.900			
Oct-17	2.900	0.122	33.7	
Nov-17	3.000	0.150	31.9	
Dec-17	3.150	0.204	33.7	
Jan-18	3.250	0.271	37.5	
Feb-18				
Mar-18				
Apr-18				
May-18				
Jun-18				
Jul-18				
Aug-18				
Sep-18				
Oct-18				
Nov-18				
Dec-18				
Jan-19				

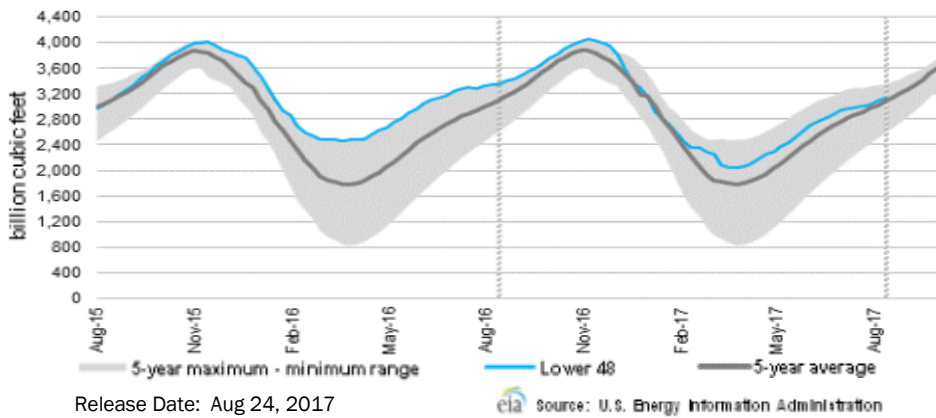
CME NG Option Prices

ATM Put

Month	Strike	Close	Imp	Vol
Sep-17	2.900			
Oct-17	2.900	0.095	31.9	
Nov-17	3.000	0.158	31.9	
Dec-17	3.150	0.215	32.8	
Jan-18	3.250	0.282	36.6	
Feb-18				
Mar-18				
Apr-18				
May-18				
Jun-18				
Jul-18				
Aug-18				
Sep-18				
Oct-18				
Nov-18				
Dec-18				
Jan-19				



WEEKLY GAS IN UNDERGROUND STORAGE WITH 5-YR RANGE



Rig Count

Report Date: August 25, 2017

	Total	Change
US -	940	(6)
CN -	217	+3

EIA Weekly NG Storage Actual and Surveys for August 18, 2017

Released August 24, 2017

- PIRA – +45
- Citi – +37
- Reuters – +45

EIA ACTUAL – +43

Total Working Gas In Storage

3,125 BCF

- +43 BCF (LAST WEEK)
- (223) BCF (LAST YEAR)
- +45 BCF (5-YR AVG)

U.S. Natural Gas Supply Gas Week 8/17 - 8/23

Average daily values (BCF/d):

- Last Year (BCF/d)
- Dry Production – +71.7
- Total Supply – +78.2
- Last Week (BCF/d)
- Dry Production – +73.0
- Total Supply – +78.6

[NEXT REPORT ON AUG 31]

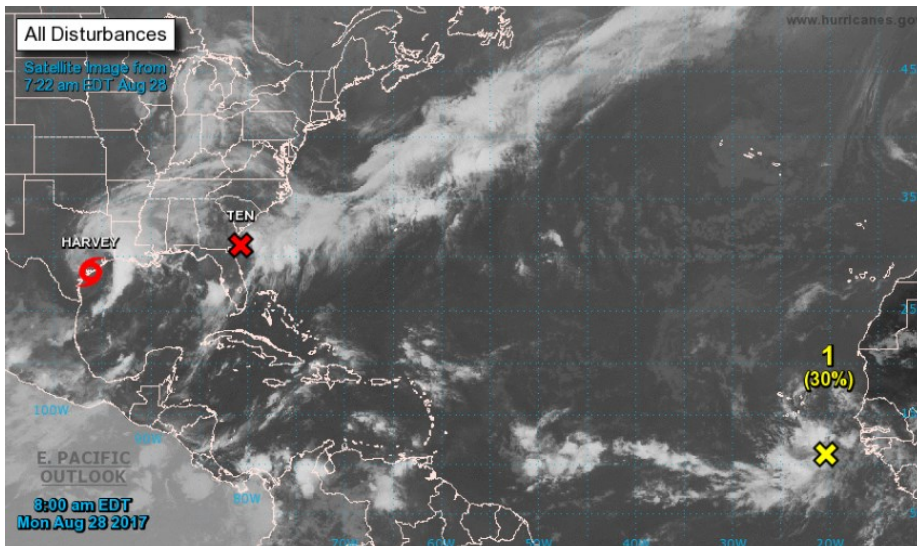
U.S. Natural Gas Demand Gas Week 8/17 - 8/23

Average daily values (BCF/d):

- Last Year (BCF/d)
- Power – +35.2
- Total Demand – +73.0
- Last Week (BCF/d)
- Power – +33.5
- Total Demand – +72.5

[NEXT REPORT ON AUG 31]

TROPICAL STORM ACTIVITY– ATLANTIC

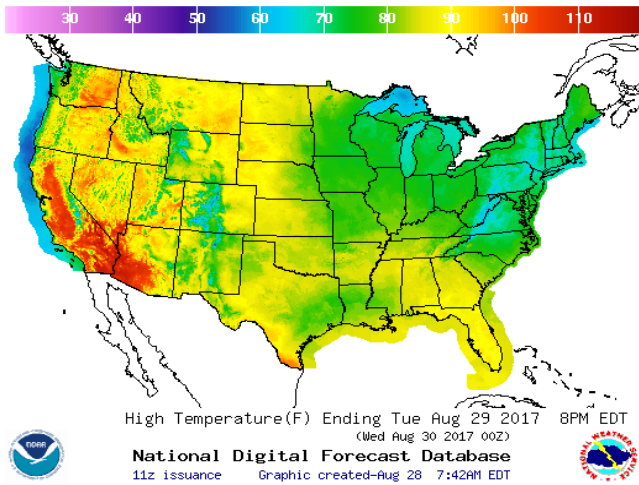


HARVEY

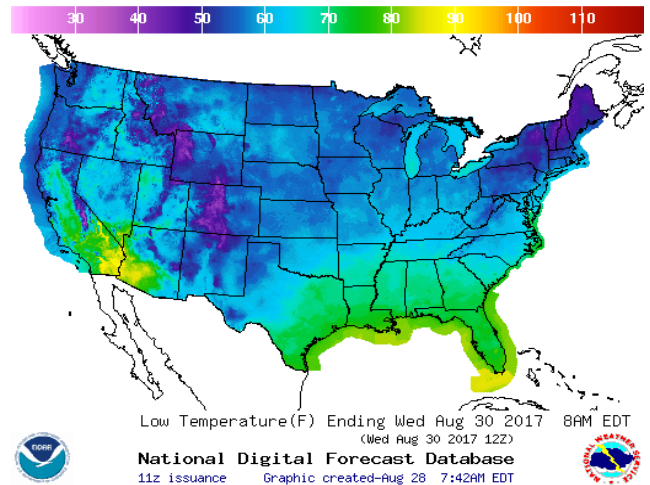


WEATHER – HIGH / LOW TEMPERATURE TOMORROW

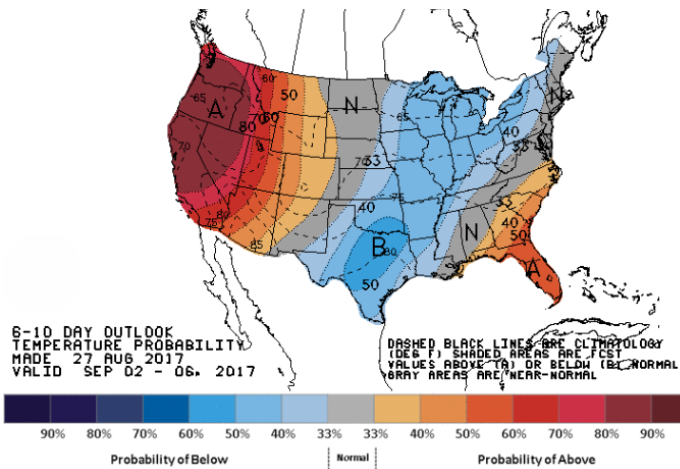
HIGH Temperature



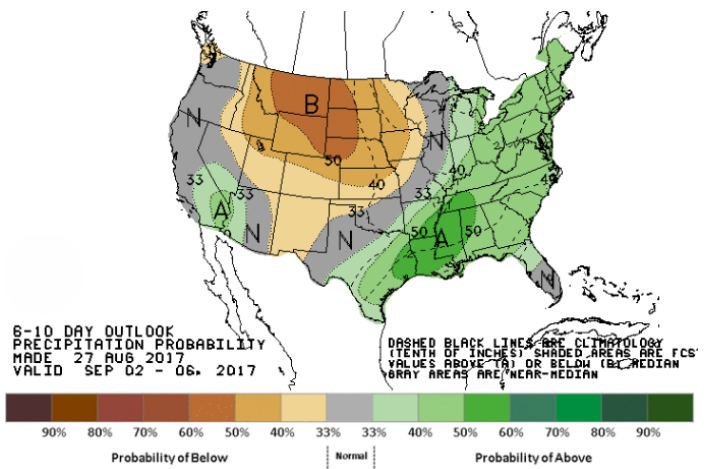
LOW Temperature



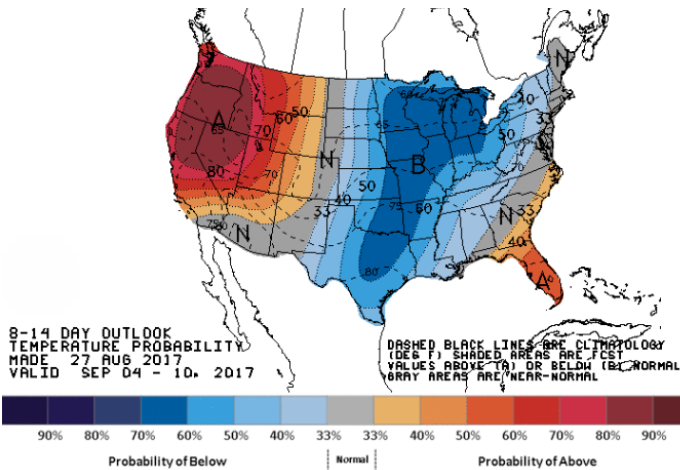
WEATHER – 6 TO 10 DAY OUTLOOK – NOAA
Temperature



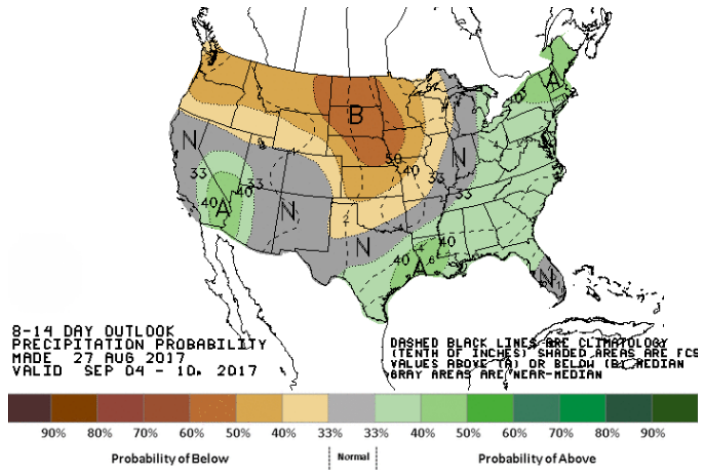
Precipitation



WEATHER – 8 TO 14 DAY OUTLOOK – NOAA
Temperature



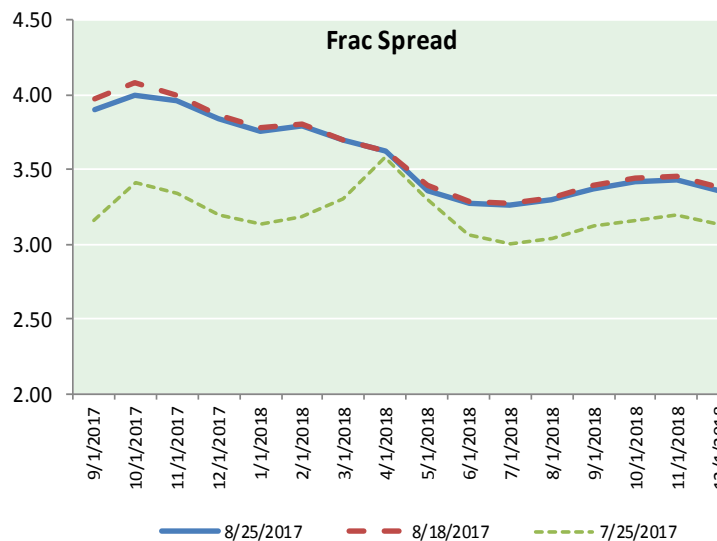
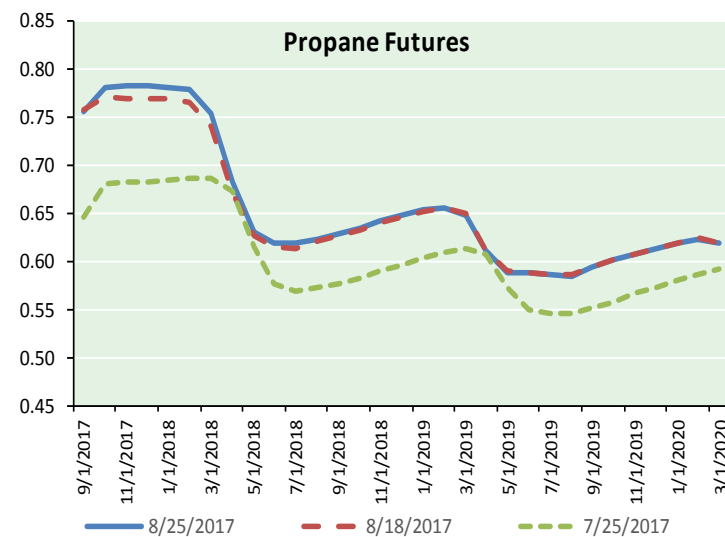
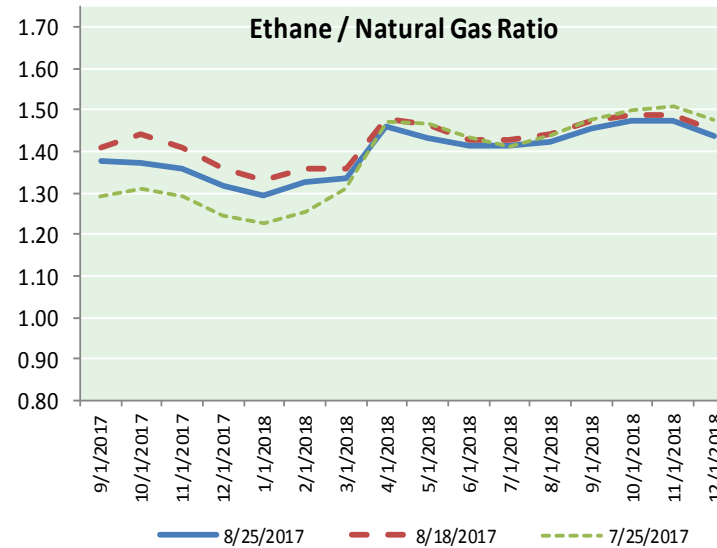
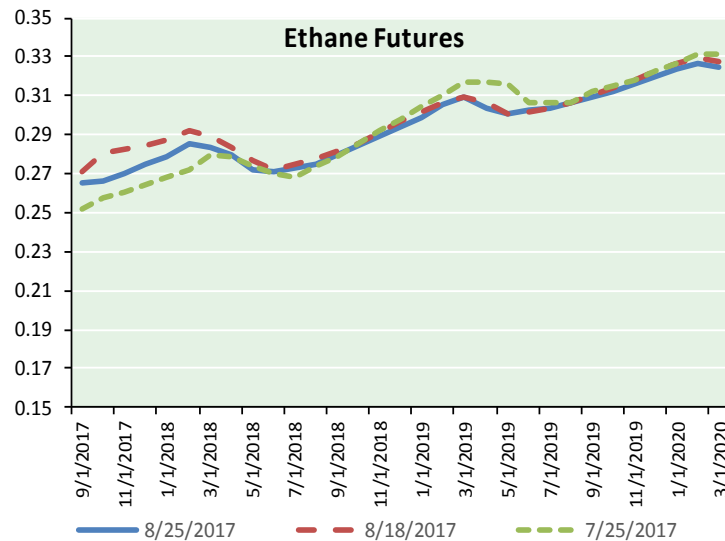
Precipitation



NATURAL GAS NEWS



ETHANE FUTURES, NG/ETHANE RATIO, PROPANE FUTURES, AND THE FRAC SPREAD



CME Future Prices

Ethane (C2)

Non-LDH— Mont Belvieu

(cents/gallon)		
Month	Close	Change
Sep-17	0.265	0.000
Oct-17	0.267	0.002
Nov-17	0.270	0.001
Dec-17	0.275	0.001
Jan-18	0.279	0.001
Feb-18	0.285	0.000
Mar-18	0.284	0.000
Apr-18	0.280	0.000
May-18	0.272	(0.001)
Jun-18	0.271	0.002
Jul-18	0.273	0.002
Aug-18	0.275	(0.000)

1YR Strip 0.275 0.001

CME Future Prices

Propane (C3)

Non-LDH— Mont Belvieu

(cents/gallon)		
Month	Close	Change
Sep-17	0.757	0.004
Oct-17	0.781	0.019
Nov-17	0.784	0.021
Dec-17	0.783	0.018
Jan-18	0.781	0.018
Feb-18	0.780	0.019
Mar-18	0.754	0.016
Apr-18	0.683	0.011
May-18	0.631	0.008
Jun-18	0.619	0.007
Jul-18	0.619	0.007
Aug-18	0.624	0.008

1YR Strip 0.716 0.013

NATURAL GAS NEWS



Prompt WTI (CL) Crude

Daily Sentiment

NEUTRAL



RESISTANCE

47.65 & 48.06

SUPPORT

47.20 & 46.62

FOLLOW US ON TWITTER:



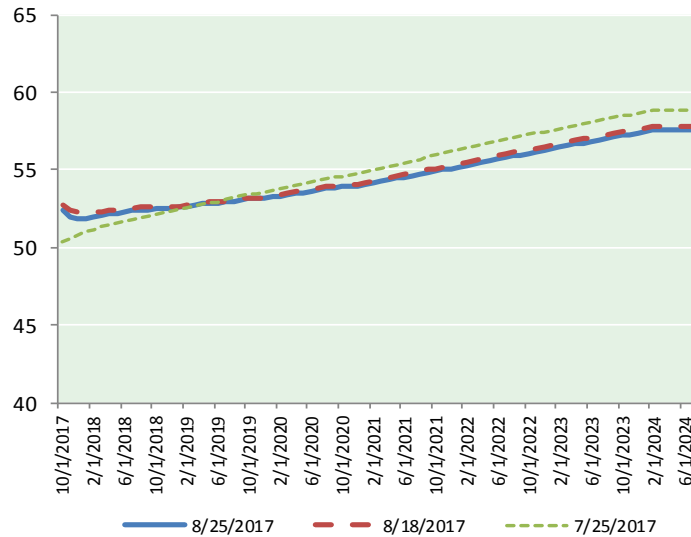
@MPG_NatGasNews

NYMEX Brent (BZ)

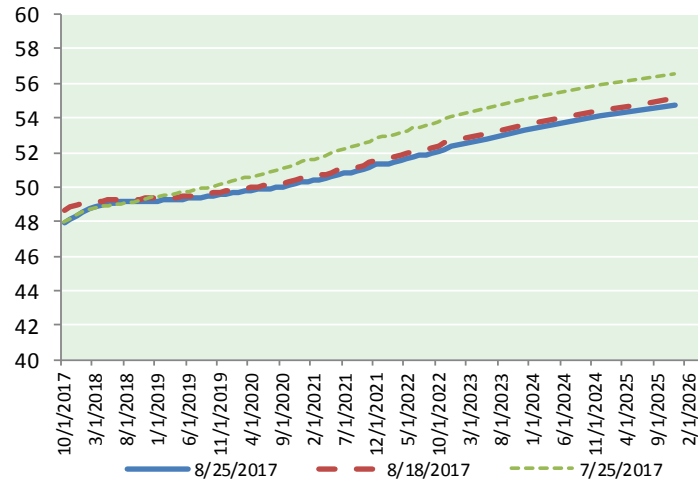
Futures

Month	Close	Change
Oct-17	52.41	0.37
Nov-17	51.98	0.32
Dec-17	51.89	0.32
Jan-18	51.90	0.31
Feb-18	51.97	0.30
Mar-18	52.07	0.31
Apr-18	52.15	0.31
May-18	52.22	0.31
Jun-18	52.28	0.30
Jul-18	52.37	0.30
Aug-18	52.43	0.29
Sep-18	52.46	0.28
Oct-18	52.50	0.28
Nov-18	52.52	0.27
Dec-18	52.55	0.27
Jan-19	52.58	0.27
Feb-19	52.64	0.27
Mar-19	52.70	0.26
Apr-19	52.80	0.26
May-19	52.84	0.26
Jun-19	52.85	0.26
Jul-19	52.94	0.26
Aug-19	53.00	0.26
Sep-19	53.07	0.26
1YR Strip	52.18	0.31
2017	52.09	0.34
5YR Strip	53.65	0.23

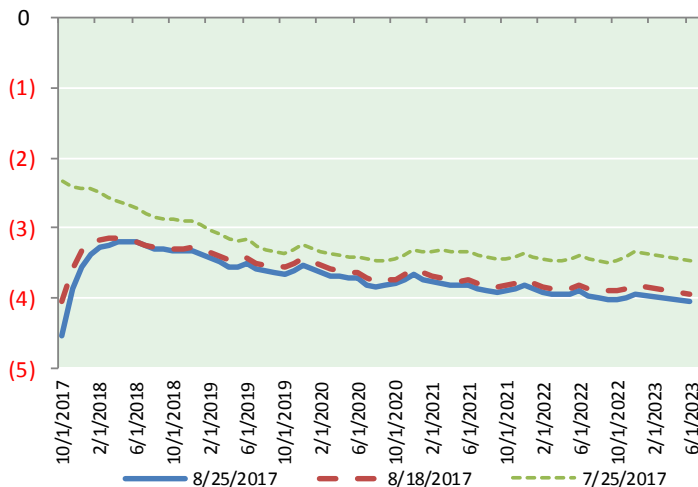
BRENT CRUDE FORWARD CURVE



WTI CRUDE FORWARD CURVE



WTI-BRENT SPREAD



FRAC Spread

Specifications

Ethane : 42%	66,500 btu/g
Propane: 28%	90,830 btu/g
Butane: 11%	102,916 btu/g
Iso-Butane: 6%	98,935 btu/g
Natural Gasoline: 13%	115,021 btu/g

Prompt NGL Futures

(\$/gallon)

	Sep-17	Close	Change
Butane	0.909	0.003	
Iso-Butane	0.935	0.001	
Nat Gasoline	1.098	(0.000)	

NYMEX WTI (CL) Futures

Month	Close	Change
Oct-17	47.87	0.44
Nov-17	48.12	0.42
Dec-17	48.34	0.42
Jan-18	48.53	0.42
Feb-18	48.70	0.43
Mar-18	48.83	0.43
Apr-18	48.94	0.43
May-18	49.02	0.42
Jun-18	49.08	0.41
Jul-18	49.11	0.40
Aug-18	49.13	0.39
Sep-18	49.15	0.38
Oct-18	49.17	0.37
Nov-18	49.18	0.36
Dec-18	49.21	0.35
Jan-19	49.21	0.34
Feb-19	49.22	0.33
Mar-19	49.22	0.32
Apr-19	49.25	0.32
May-19	49.28	0.31
Jun-19	49.33	0.30
Jul-19	49.35	0.29
Aug-19	49.38	0.28
Sep-19	49.43	0.27
1YR Strip	48.74	0.42
2017	48.11	0.43
5YR Strip	49.99	0.23