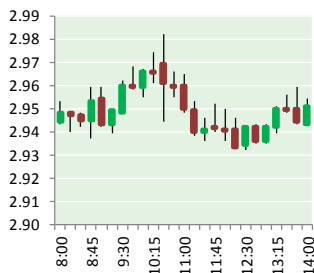


NATURAL GAS



AUGUST 25, 2017

Prior Day's NYMEX Sep-17 Contract (CT)



NYMEX NG Futures

Month	Close	Change
Sep-17	2.949	0.021
Oct-17	2.982	0.022
Nov-17	3.053	0.020
Dec-17	3.193	0.017
Jan-18	3.288	0.015
Feb-18	3.283	0.014
Mar-18	3.244	0.013
Apr-18	2.911	0.004
May-18	2.875	0.003
Jun-18	2.898	0.002
Jul-18	2.922	0.002
Aug-18	2.925	0.001
Sep-18	2.901	0.002
Oct-18	2.919	0.002
Nov-18	2.966	0.002
Dec-18	3.092	0.001
Jan-19	3.174	0.001
Feb-19	3.148	0.000
Mar-19	3.081	(0.001)
Apr-19	2.706	(0.004)
May-19	2.673	(0.004)
Jun-19	2.694	(0.004)
Jul-19	2.716	(0.004)
Aug-19	2.720	(0.005)
1YR Strip	3.044	0.011
2017	3.044	0.020
5YR Strip	2.842	(0.011)

IN THE NEWS

Hurricane Harvey strengthens to Category 2 as Texas prepares for onslaught - The Chicago Tribune reported: Harvey continued to intensify as it steered for the Texas coast, with the forecasters saying early Friday that it had strengthened to a Category 2

- Hurricane Harvey strengthens to Category 2 as Texas prepares for onslaught
- U.S. natural gas futures holds gains after storage data

storm. The hurricane with the potential for up to 3 feet of rain, 125 mph winds and 12-foot storm surges could be the fiercest such storm to hit the United States in almost a dozen years. Forecasters labeled Harvey a "life-threatening storm" that posed a "grave risk" as millions of people braced for a prolonged battering that could swamp dozens of counties more than 100 miles inland. Landfall was predicted for late Friday or early Saturday between Port O'Connor and Matagorda Bay, a 30-mile (48-kilometer) stretch of coastline about 70 miles (110 kilometers) northeast of Corpus Christi. For more visit chicagotribune.com or click the following link <http://trib.in/2ix3X1M>

U.S. natural gas futures holds gains after storage data - Investing.com reports: U.S. natural gas futures initially extended gains in North American trade on Thursday, immediately after data showed that natural gas supplies in storage in the U.S. rose less than expected last week, but quickly returned to levels seen prior to the release of the data. The U.S. Energy Information Administration said in its weekly report that natural gas storage in the U.S. rose by 43 billion cubic feet in the week ended August 18, while analysts had forecast a decrease of just 45 billion. A weather system with showers and cooling will sweep across the central and east-central U.S. through the end of the week, dropping demand to much lighter levels due to highs only reaching the 70s to lower 80s Fahrenheit. For more on this story visit investing.com or click <http://bit.ly/2xia3GH>

12 MONTH CANDLESTICK (WEEKLY)



Prompt Natural Gas (NG) Daily Sentiment

NEUTRAL



RESISTANCE
2.98 & 3.01
SUPPORT
2.88 & 2.82

Trading Summary

NATURAL GAS

Futures	Close	Change
NG	2.949	0.021
Volume	320,621	(306,647)
Open Int.	1,298,009	(5,972)

CRUDE AND GASOLINE

Futures	Close	Change
Crude	47.43	(0.98)
RBOB	1.6641	0.0452
Crude/NG	15.91	(0.45)

METALS

Futures	Close	Change
Gold	1,286.50	1.00

EQUITIES

Exchange	Close	Change
DOW	21,783.40	(28.69)
S&P 500	2,294.62	(149.42)

CURRENCY

Currency	Close	Change
EUR/USD		
USD/CND	1.2503	(0.0013)

Contact Us



Mansfield Energy Corp
1025 Airport Pkwy
Gainesville, GA 30501

www.mansfield.energy

info@mansfieldoil.com

Phone: (800) 695-6626

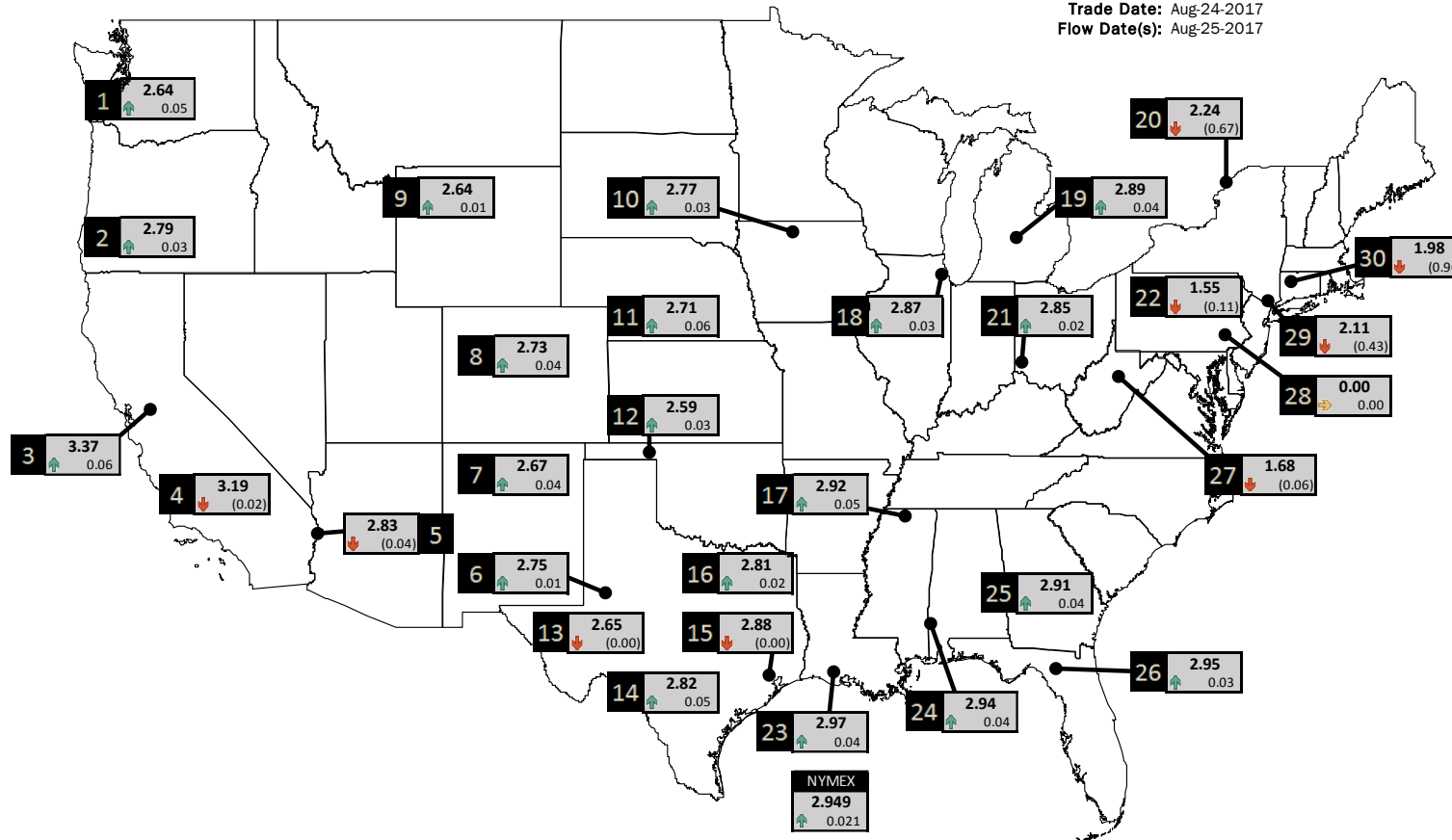




NATURAL GAS NEWS

PHYSICAL SPOT NATURAL GAS PRICE MAP

Trade Date: Aug-24-2017
Flow Date(s): Aug-25-2017



ID	DAILY INDEX	PRICE	CHANGE
1	Stanfield	2.64	0.05
2	Malin	2.79	0.03
3	PG&E - Citygate	3.37	0.06
4	SoCal-Citygate	3.19	(0.02)
5	SoCal Border	2.83	(0.04)
6	Waha	2.75	0.01
7	EPSJ Blanco Pool	2.67	0.04
8	Opal Plant Tailgate	2.73	0.04
9	NWP-Wyoming	2.64	0.01
10	Ventura	2.77	0.03

ID	DAILY INDEX	PRICE	CHANGE
11	NGPL-Midcont Pool	2.71	0.06
12	Panhandle	2.59	0.03
13	EP-Permian	2.65	(0.00)
14	TGP-ZO	2.82	0.05
15	Houston Ship Channel	2.88	(0.00)
16	NGPL-TXOK	2.81	0.02
17	TETCO-M1 30	2.92	0.05
18	Chicago Citygates	2.87	0.03
19	Michcon	2.89	0.04
20	Iroquois (into)	2.24	(0.67)
	NYMEX	2.949	0.021

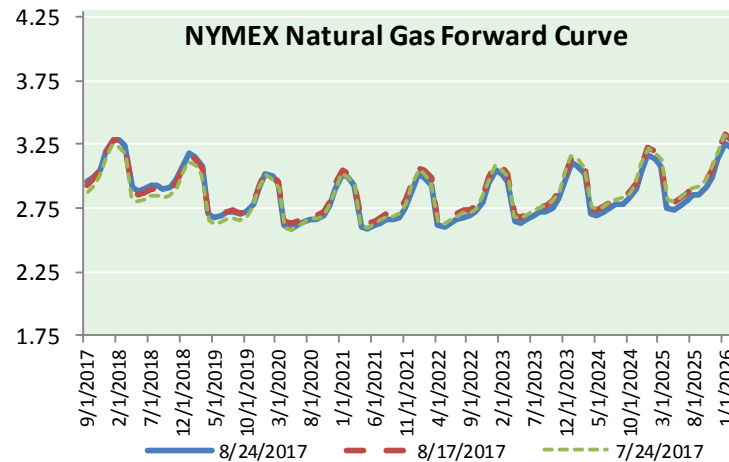
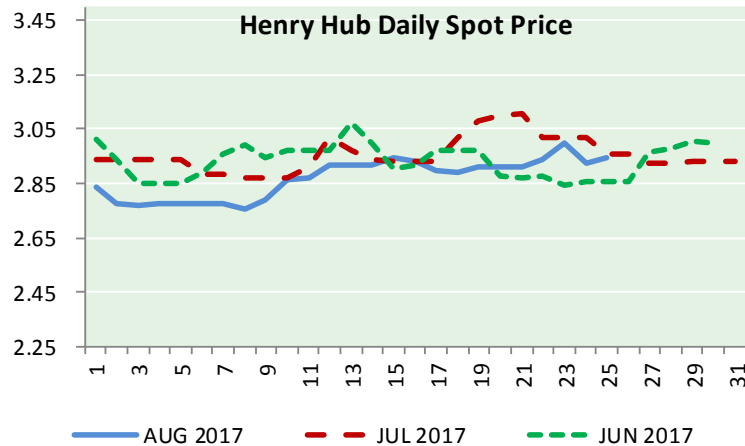
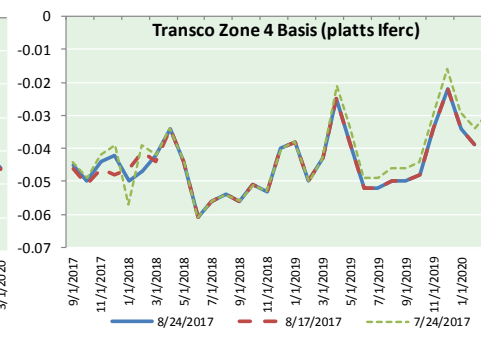
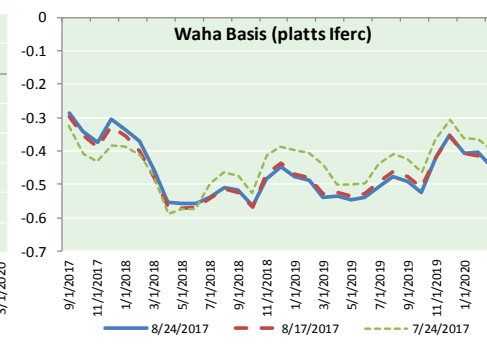
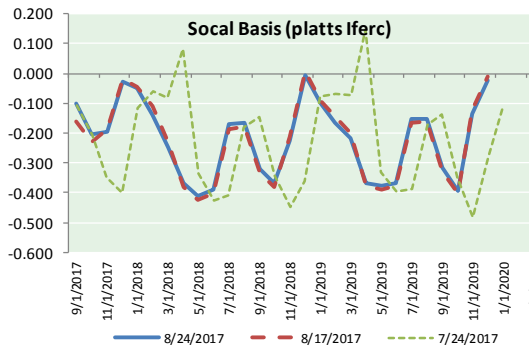
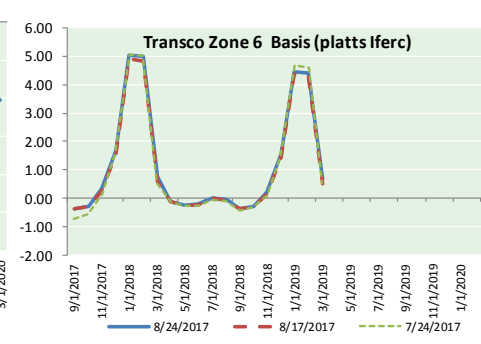
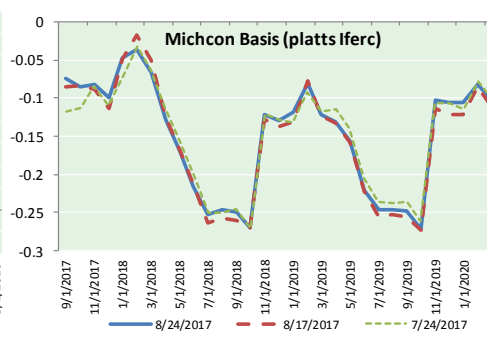
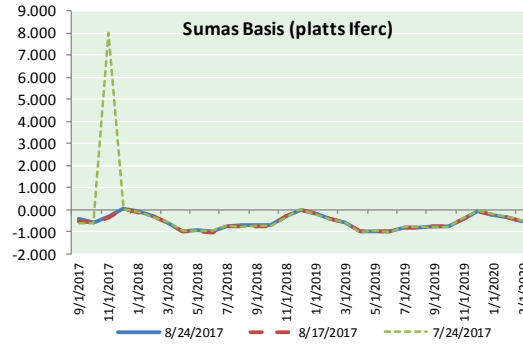
ID	DAILY INDEX	PRICE	CHANGE
21	REX E-ANR	2.85	0.02
22	Leidy-Transco	1.55	(0.11)
23	Henry	2.97	0.04
24	Transco-85	2.94	0.04
25	Sonat-ZO South	2.91	0.04
26	FGT-Z3	2.95	0.03
27	Dominion-South	1.68	(0.06)
28	Transco-Z6 (non-NY)	0.00	0.00
29	Transco-Z6 (NY)	2.11	(0.43)
30	Iroquois-Z2	1.98	(0.96)

DISCLAIMER: The content herein is privileged and confidential. Content is presented for informational purposes and is a reflection of the market opinions of its authors subject to change without notice. Content is derived from sources believed to be accurate at the time of release but carries no guarantee of accuracy or completeness. Mansfield Energy Corp and its clients may or may not take positions similar or opposite those discussed herein. The reader should realize that the trading of commodities involves risk, and the reader assumes all responsibility for the risk of financial losses.





NATURAL GAS BASIS FUTURES, HENRY HUB SPOT PRICES, AND FORWARD CURVE



CME NG Option Prices

ATM Call

Month	Strike	Close	Imp Vol
Sep-17	2.950	0.033	37.5
Oct-17	2.950	0.122	31.9
Nov-17	3.050	0.155	31.9
Dec-17	3.200	0.210	33.7
Jan-18	3.300	0.275	37.5
Feb-18			
Mar-18			
Apr-18			
May-18			
Jun-18			
Jul-18			
Aug-18			
Sep-18			
Oct-18			
Nov-18			
Dec-18			
Jan-19			

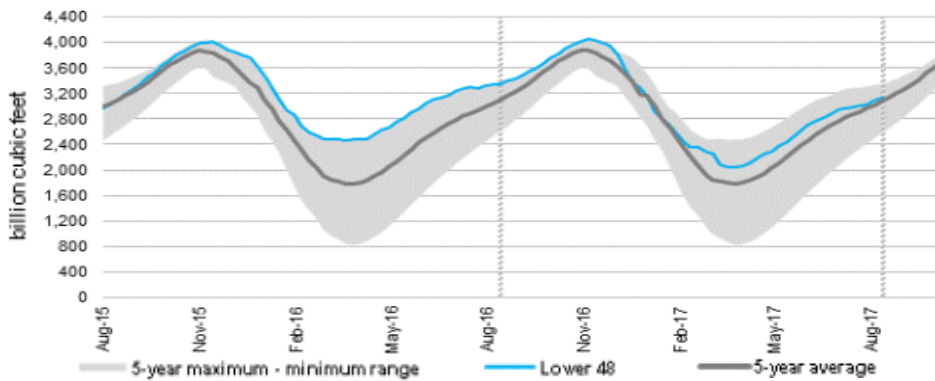
CME NG Option Prices

ATM Put

Month	Strike	Close	Imp Vol
Sep-17	2.950	0.032	22.5
Oct-17	2.950	0.090	28.1
Nov-17	3.050	0.152	29.0
Dec-17	3.200	0.217	31.9
Jan-18	3.300	0.285	35.6
Feb-18			
Mar-18			
Apr-18			
May-18			
Jun-18			
Jul-18			
Aug-18			
Sep-18			
Oct-18			
Nov-18			
Dec-18			
Jan-19			

NATURAL GAS NEWS

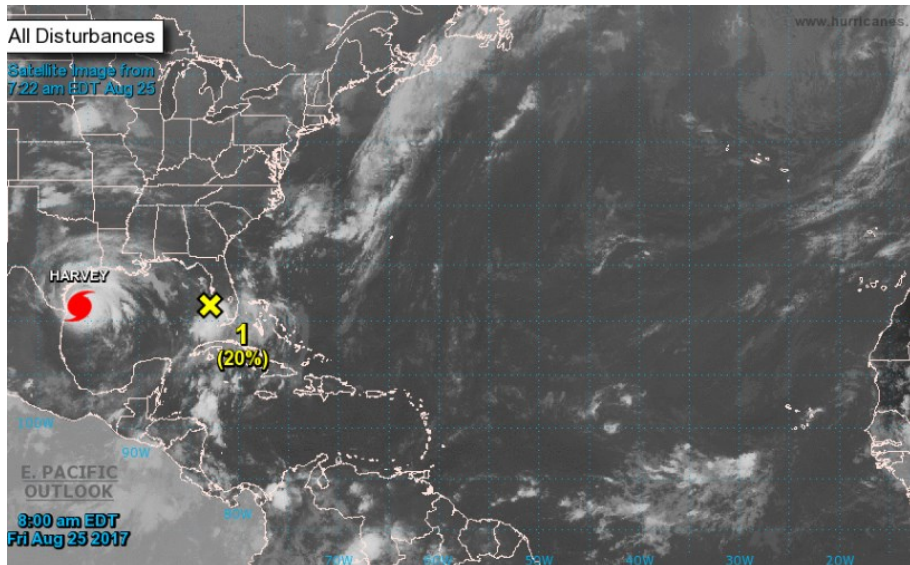
WEEKLY GAS IN UNDERGROUND STORAGE WITH 5-YR RANGE



Release Date: Aug 24, 2017

Source: U.S. Energy Information Administration

TROPICAL STORM ACTIVITY— ATLANTIC



HARVEY



Rig Count

Report Date: August 18, 2017

	Total	Change
US -	946	(3)
CN -	214	(6)

EIA Weekly NG Storage Actual and Surveys for August 18, 2017

Released August 24, 2017

PIRA — +45

Citi — +37

Reuters — +45

EIA ACTUAL — +43

Total Working Gas In Storage

3,125 BCF

+43 BCF (LAST WEEK)

(223) BCF (LAST YEAR)

+45 BCF (5-YR AVG)

U.S. Natural Gas Supply Gas Week 8/17 - 8/23

Average daily values (BCF/D):

Last Year (BCF/d)

Dry Production — +71.7

Total Supply — +78.2

Last Week (BCF/d)

Dry Production — +73.0

Total Supply — +78.6

[NEXT REPORT ON AUG 31]

U.S. Natural Gas Demand Gas Week 8/17 - 8/23

Average daily values (BCF/D):

Last Year (BCF/d)

Power — +35.2

Total Demand — +73.0

Last Week (BCF/d)

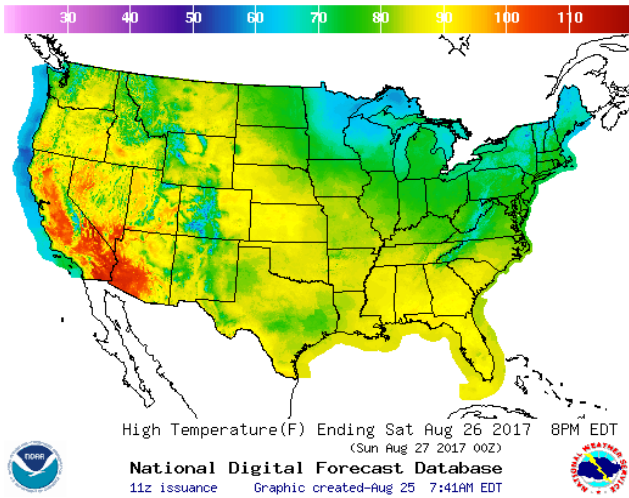
Power — +33.5

Total Demand — +72.5

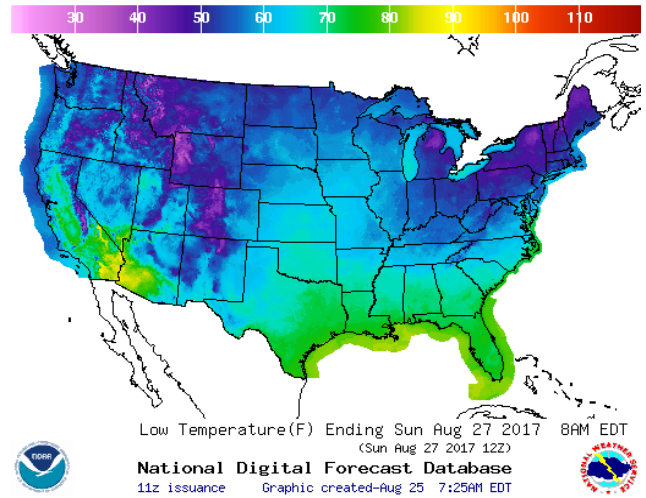
[NEXT REPORT ON AUG 31]

WEATHER – HIGH / LOW TEMPERATURE SATURDAY

HIGH Temperature

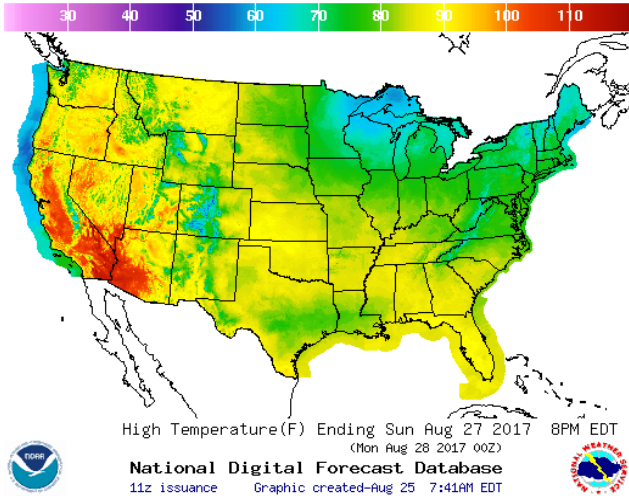


LOW Temperature

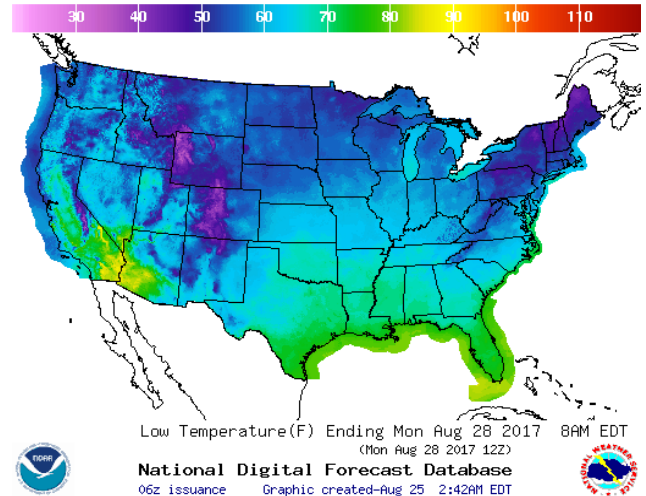


WEATHER – HIGH / LOW TEMPERATURE SUNDAY

HIGH Temperature

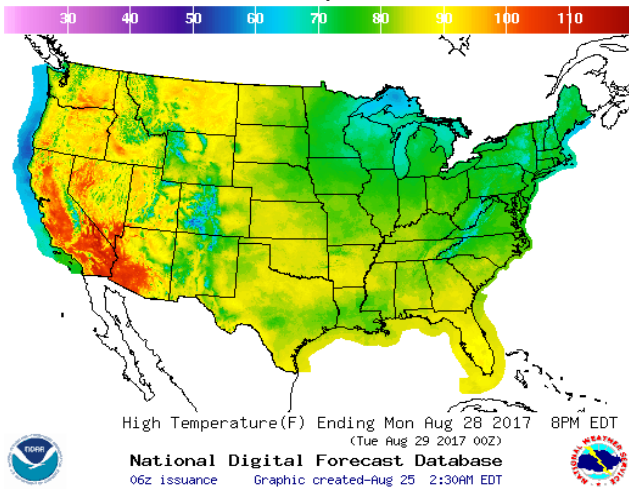


LOW Temperature

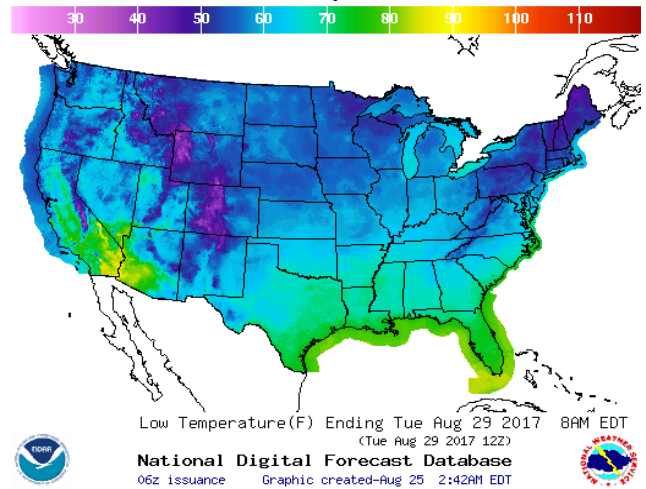


WEATHER – HIGH / LOW TEMPERATURE MONDAY

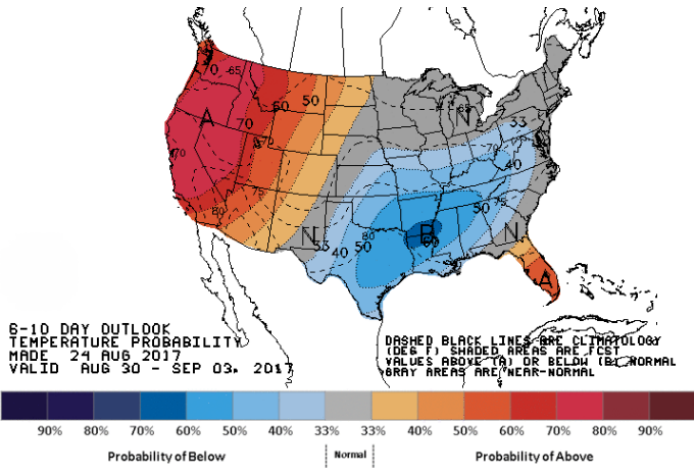
HIGH Temperature



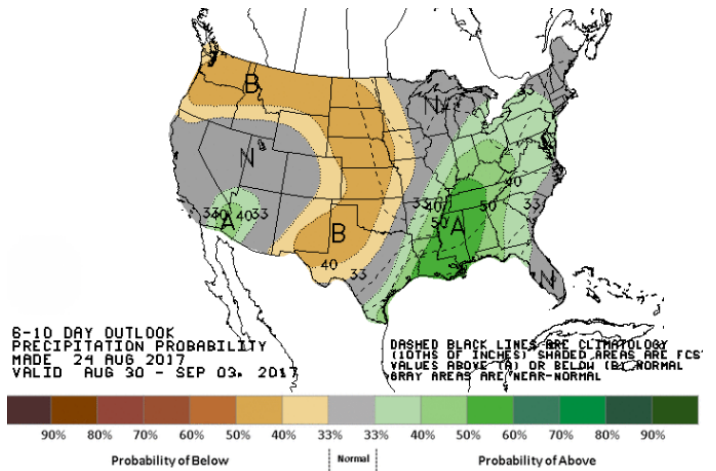
LOW Temperature



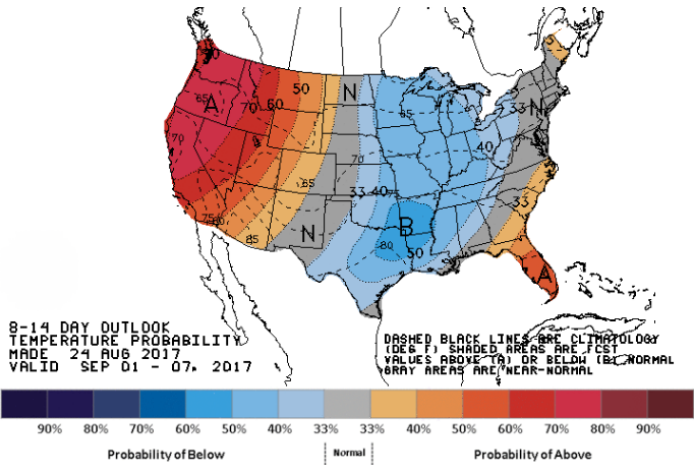
WEATHER — 6 TO 10 DAY OUTLOOK — NOAA
Temperature



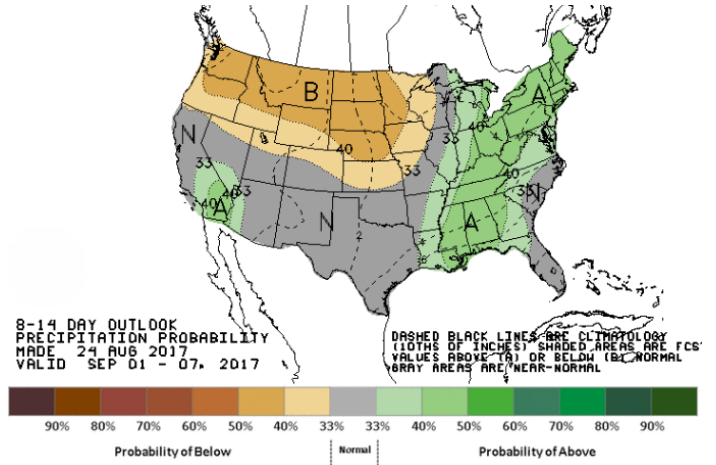
Precipitation



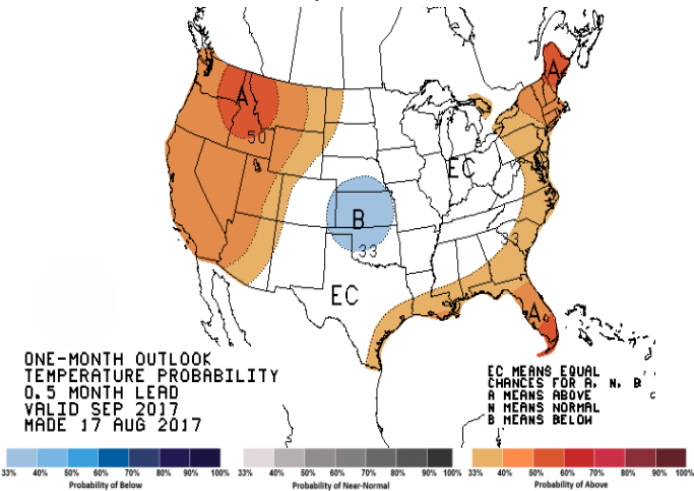
WEATHER — 8 TO 14 DAY OUTLOOK — NOAA
Temperature



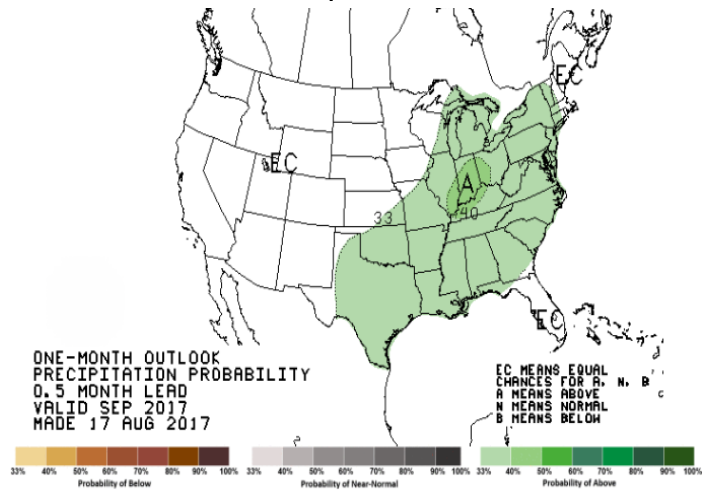
Precipitation



WEATHER — 30 DAY OUTLOOK — NOAA
Temperature



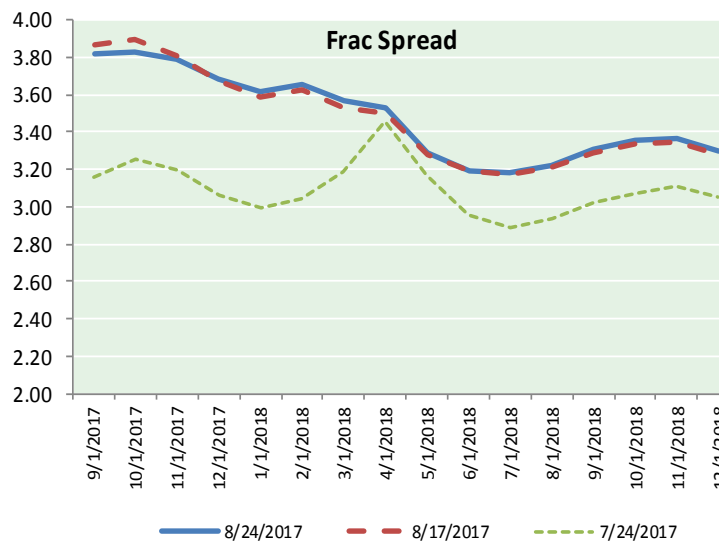
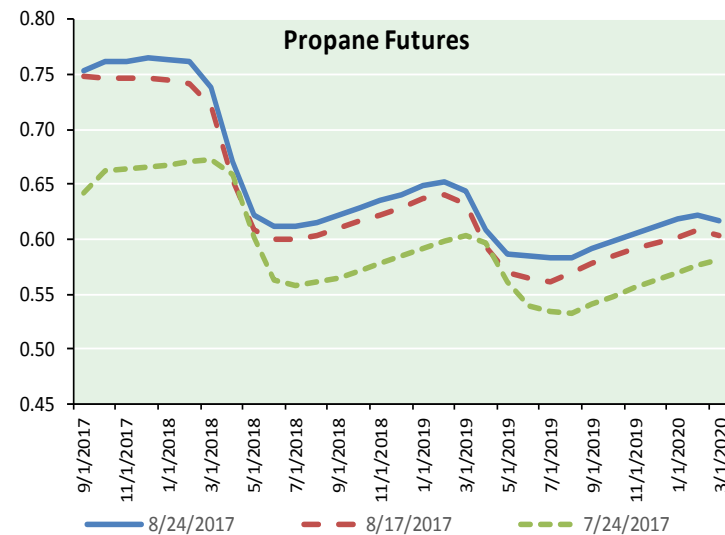
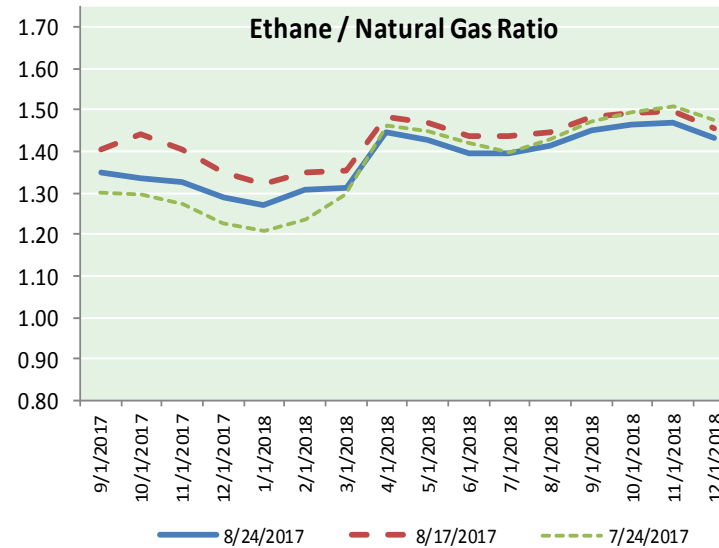
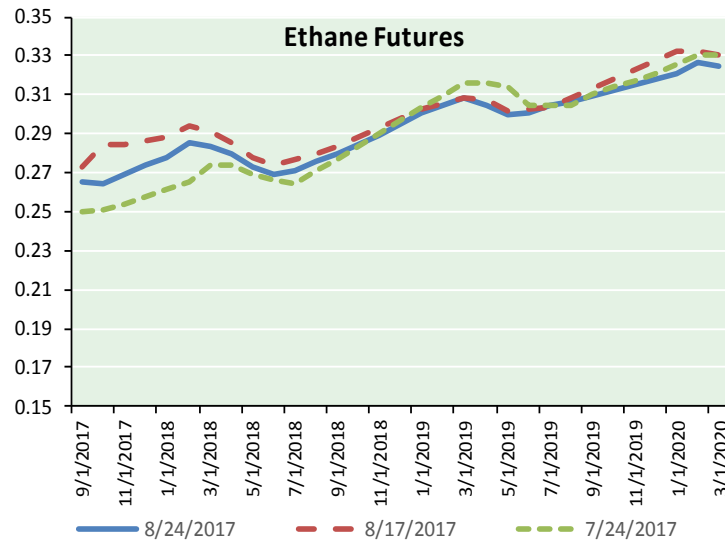
Precipitation



NATURAL GAS NEWS



ETHANE FUTURES, NG/ETHANE RATIO, PROPANE FUTURES, AND THE FRAC SPREAD



CME Future Prices

Ethane (C2)

Non-LDH— Mont Belvieu

Month	Close	Change
Sep-17	0.265	(0.000)
Oct-17	0.265	(0.002)
Nov-17	0.269	0.000
Dec-17	0.274	0.000
Jan-18	0.278	0.000
Feb-18	0.285	0.001
Mar-18	0.283	0.001
Apr-18	0.280	0.002
May-18	0.273	0.004
Jun-18	0.269	(0.001)
Jul-18	0.271	(0.002)
Aug-18	0.275	0.003

1YR Strip 0.274 0.001

CME Future Prices

Propane (C3)

Non-LDH— Mont Belvieu

Month	Close	Change
Sep-17	0.753	0.001
Oct-17	0.762	0.004
Nov-17	0.763	0.004
Dec-17	0.765	0.005
Jan-18	0.763	0.003
Feb-18	0.761	0.003
Mar-18	0.738	0.004
Apr-18	0.671	0.005
May-18	0.623	0.004
Jun-18	0.613	0.004
Jul-18	0.613	0.004
Aug-18	0.616	0.003

1YR Strip 0.703 0.004

NATURAL GAS NEWS



Prompt WTI (CL) Crude

Daily Sentiment

BEARISH



RESISTANCE

48.22 & 49.01

SUPPORT

46.85 & 46.27

FOLLOW US ON TWITTER:



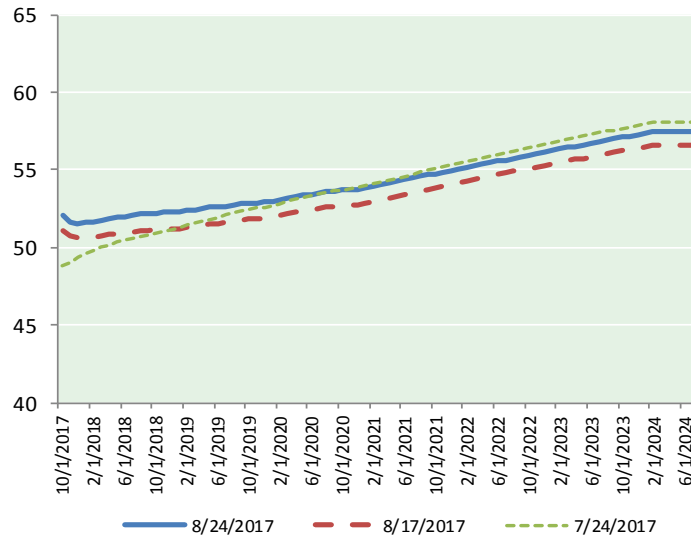
@MPG_NatGasNews

NYMEX Brent (BZ)

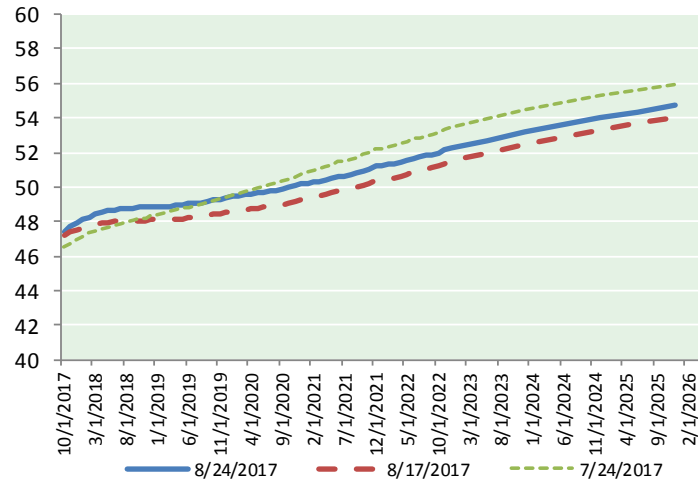
Futures

Month	Close	Change
Oct-17	52.04	(0.53)
Nov-17	51.66	(0.58)
Dec-17	51.57	(0.59)
Jan-18	51.59	(0.60)
Feb-18	51.67	(0.60)
Mar-18	51.76	(0.59)
Apr-18	51.84	(0.58)
May-18	51.91	(0.57)
Jun-18	51.98	(0.56)
Jul-18	52.07	(0.55)
Aug-18	52.14	(0.54)
Sep-18	52.18	(0.52)
Oct-18	52.22	(0.51)
Nov-18	52.25	(0.50)
Dec-18	52.28	(0.49)
Jan-19	52.31	(0.48)
Feb-19	52.37	(0.47)
Mar-19	52.44	(0.45)
Apr-19	52.54	(0.44)
May-19	52.58	(0.43)
Jun-19	52.59	(0.42)
Jul-19	52.68	(0.42)
Aug-19	52.74	(0.42)
Sep-19	52.81	(0.41)
1YR Strip	51.87	(0.57)
2017	51.76	(0.57)
5YR Strip	53.43	(0.42)

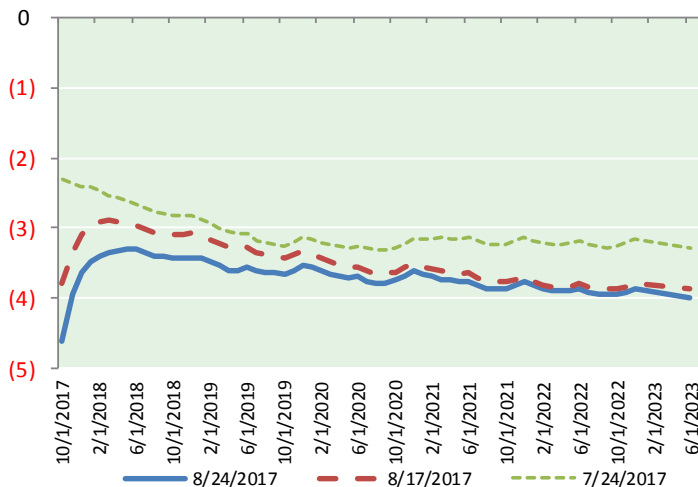
BRENT CRUDE FORWARD CURVE



WTI CRUDE FORWARD CURVE



WTI-BRENT SPREAD



FRAC Spread

Specifications

Ethane : 42%	66,500 btu/g
Propane: 28%	90,830 btu/g
Butane: 11%	102,916 btu/g
Iso-Butane: 6%	98,935 btu/g
Natural Gasoline: 13%	115,021 btu/g

Prompt NGL Futures

(\$/gallon)

	Sep-17	Close	Change
Butane	0.906	(0.003)	
Iso-Butane	0.935	(0.003)	
Nat Gasoline	1.099	(0.003)	

NYMEX WTI (CL) Futures

Month	Close	Change
Oct-17	47.43	(0.98)
Nov-17	47.70	(0.92)
Dec-17	47.92	(0.88)
Jan-18	48.11	(0.86)
Feb-18	48.27	(0.84)
Mar-18	48.40	(0.82)
Apr-18	48.51	(0.79)
May-18	48.60	(0.76)
Jun-18	48.67	(0.73)
Jul-18	48.71	(0.71)
Aug-18	48.74	(0.70)
Sep-18	48.77	(0.68)
Oct-18	48.80	(0.67)
Nov-18	48.82	(0.66)
Dec-18	48.86	(0.65)
Jan-19	48.87	(0.64)
Feb-19	48.89	(0.62)
Mar-19	48.90	(0.61)
Apr-19	48.93	(0.59)
May-19	48.97	(0.57)
Jun-19	49.03	(0.56)
Jul-19	49.06	(0.55)
Aug-19	49.10	(0.53)
Sep-19	49.16	(0.51)
1YR Strip	48.32	(0.81)
2017	47.68	(0.93)
5YR Strip	49.77	(0.49)