

# NATURAL GAS



AUGUST 24, 2017

## Prior Day's NYMEX Sep-17 Contract (CT)



## NYMEX NG Futures

Month	Close	Change
Sep-17	2.939	(0.011)
Oct-17	2.968	(0.008)
Nov-17	3.037	(0.004)
Dec-17	3.177	(0.001)
Jan-18	3.273	0.000
Feb-18	3.267	0.002
Mar-18	3.231	0.000
Apr-18	2.903	0.004
May-18	2.868	0.004
Jun-18	2.892	0.004
Jul-18	2.917	0.003
Aug-18	2.920	0.004
Sep-18	2.896	0.003
Oct-18	2.914	0.003
Nov-18	2.961	0.003
Dec-18	3.087	0.004
Jan-19	3.169	0.004
Feb-19	3.145	0.003
Mar-19	3.079	0.003
Apr-19	2.712	(0.002)
May-19	2.679	(0.002)
Jun-19	2.700	(0.002)
Jul-19	2.722	(0.002)
Aug-19	2.727	(0.002)
1YR Strip	3.033	(0.000)
2017	3.030	(0.006)
5YR Strip	2.853	0.001

## IN THE NEWS

**Mexico Launches Its First Gas Price Index**— Oilprice.com reported: Mexico's energy regulator has announced the first publication of a natural gas wholesale price index for the first time since introducing sweeping energy reforms, with more regional indices on the way. The index will come out monthly and will be based

- **Court orders new environmental review for Sabal Trail Pipeline**
- **U.S. Gulf Coast refiners, producers brace for tropical storm**

on wholesale transactions on the local gas market, made up of a national average of all such transactions as reported by gas marketers every month. Eventually, the index will reflect daily natural gas prices, as the energy watchdog works to provide all market participants with more transparency to stimulate trade. Currently, gas marketers in the country are obliged to submit daily and monthly reports on their transactions. The purpose is to collect data on day-ahead spot market sales and the reporting system has been in place since the end of last year but it was only last month that traders could start actually reporting transactions, after a capacity reservation regime came into effect. For more visit [oilprice.com](http://oilprice.com) or click the following link <http://bit.ly/2g6rYvz>

**U.S. Gulf Coast refiners, producers brace for tropical storm** – Reuters reports: Oil and gas producers from Mexico to Louisiana are gearing up for heavy rains and winds this week as remnants of a tropical storm circulating over Mexico's Yucatan Peninsula threaten to redevelop into a cyclone. The remains of Tropical Storm Harvey, which are scattered over Mexico, have a 90 percent chance of developing into a cyclone over the next two days, the National Hurricane Center said on Tuesday. The U.S. Gulf of Mexico is home to about 17 percent of the nation's crude output and 5 percent of dry natural gas output, according to the U.S. Energy Information Administration. More than 45 percent of the nation's refining capacity is along the U.S. Gulf Coast. For more on this story visit [reuters.com](http://reut.rs/2wz3UbT) or click <http://reut.rs/2wz3UbT>

## 12 MONTH CANDLESTICK (WEEKLY)



## Prompt Natural Gas (NG) Daily Sentiment

**NEUTRAL**



RESISTANCE  
2.95 & 2.99  
SUPPORT  
2.90 & 2.87

## Trading Summary

### NATURAL GAS

Futures	Close	Change
NG	2.939	(0.011)
Volume	433,541	(57,529)
Open Int.	1,316,077	(6,497)

### CRUDE AND GASOLINE

Futures	Close	Change
Crude	47.83	0.58
RBOB	1.5908	0.0281
Crude/NG	16.12	0.24

### METALS

Futures	Close	Change
Gold	1,288.90	(1.70)

### EQUITIES

Exchange	Close	Change
DOW	21,899.89	196.14
S&P 500	2,294.62	(133.75)

### CURRENCY

Currency	Close	Change
EUR/USD		
USD/CND	1.2548	(0.0002)

## Contact Us



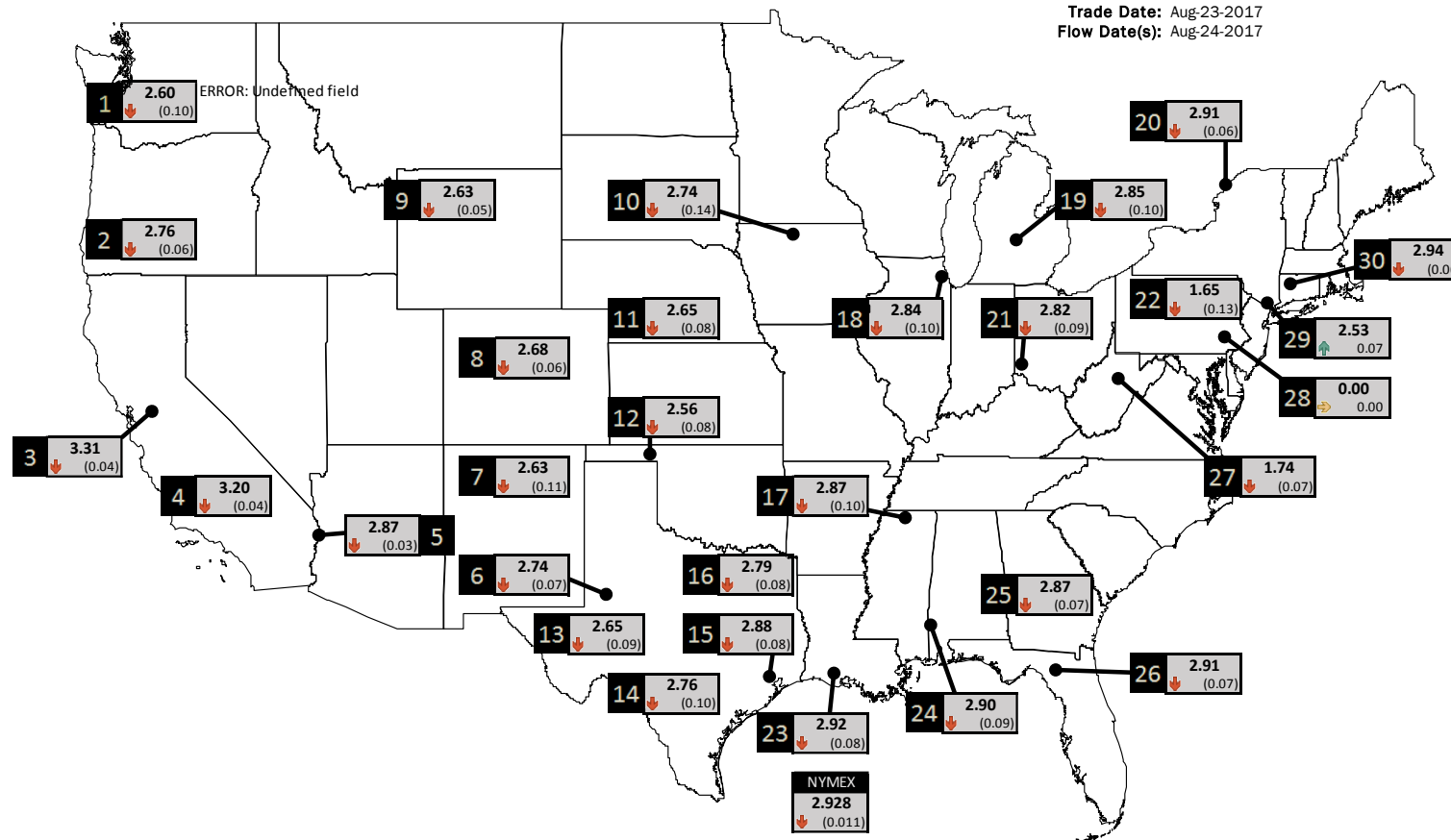
**Mansfield Energy Corp**  
1025 Airport Pkwy  
Gainesville, GA 30501  
  
[www.mansfield.energy](http://www.mansfield.energy)  
[info@mansfieldoil.com](mailto:info@mansfieldoil.com)

Phone: (800) 695-6626



# NATURAL GAS NEWS

## PHYSICAL SPOT NATURAL GAS PRICE MAP



ID	DAILY INDEX	PRICE	CHANGE
1	Stanfield	2.60	(0.10)
2	Malin	2.76	(0.06)
3	PG&E - Citygate	3.31	(0.04)
4	SoCal-Citygate	3.20	(0.04)
5	SoCal Border	2.87	(0.03)
6	Waha	2.74	(0.07)
7	EPSJ Blanco Pool	2.63	(0.11)
8	Opal Plant Tailgate	2.68	(0.06)
9	NWP-Wyoming	2.63	(0.05)
10	Ventura	2.74	(0.14)

ID	DAILY INDEX	PRICE	CHANGE
11	NGPL-Midcont Pool	2.65	(0.08)
12	Panhandle	2.56	(0.08)
13	EP-Permian	2.65	(0.09)
14	TGP-ZO	2.76	(0.10)
15	Houston Ship Channel	2.88	(0.08)
16	NGPL-TXOK	2.79	(0.08)
17	TETCO-M1 30	2.87	(0.10)
18	Chicago Citygates	2.84	(0.10)
19	Michcon	2.85	(0.10)
20	Iroquois (into)	2.91	(0.06)

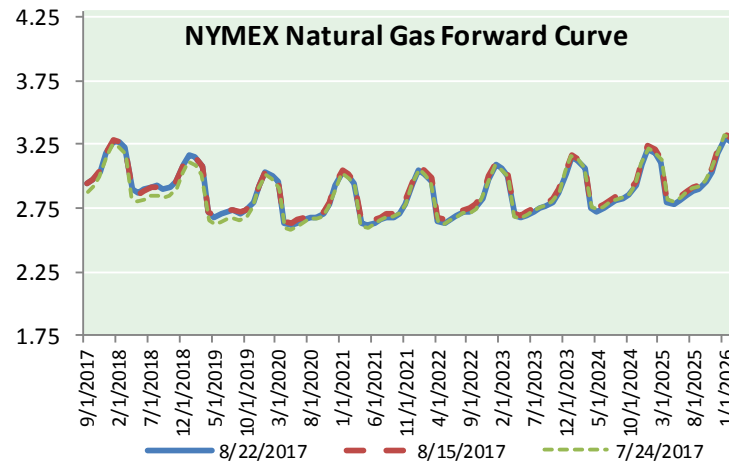
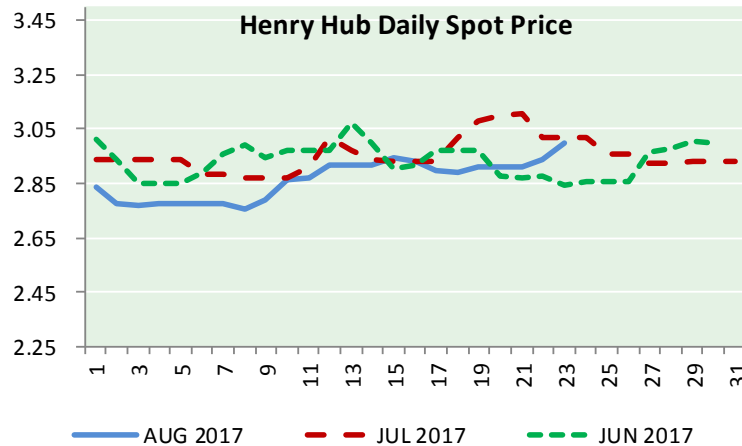
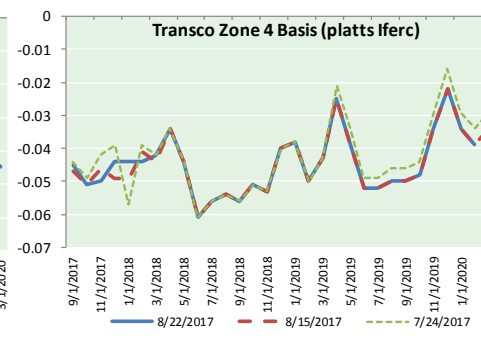
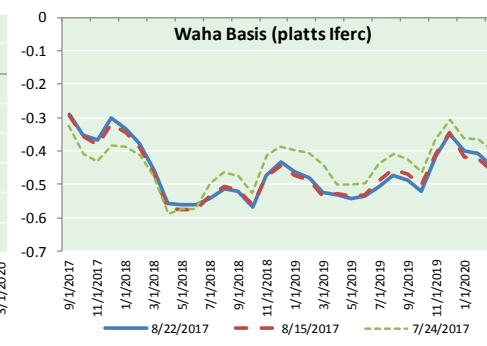
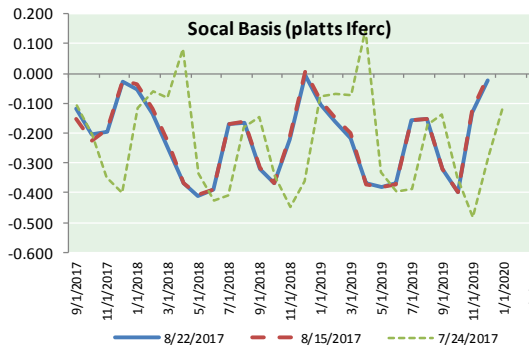
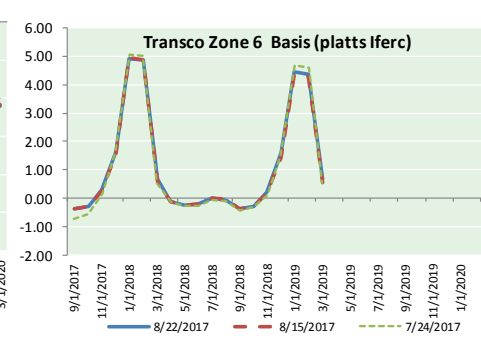
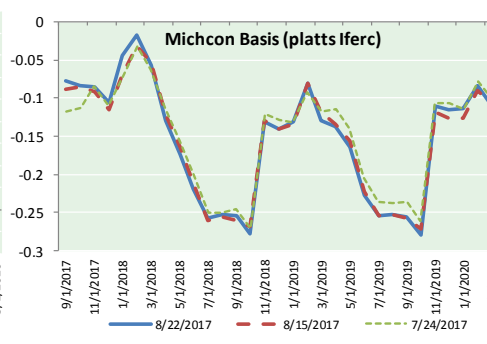
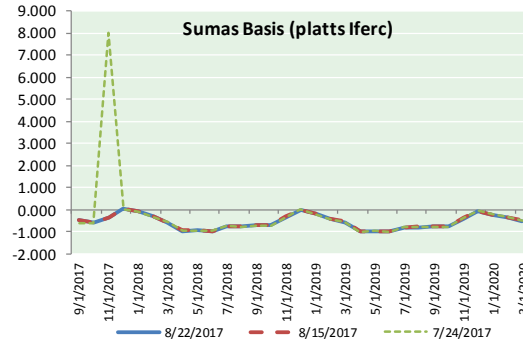
ID	DAILY INDEX	PRICE	CHANGE
21	REX E-ANR	2.82	(0.09)
22	Leidy-Transco	1.65	(0.13)
23	Henry	2.92	(0.08)
24	Transco-85	2.90	(0.09)
25	Sonat-ZO South	2.87	(0.07)
26	FGT-Z3	2.91	(0.07)
27	Dominion-South	1.74	(0.07)
28	Transco-Z6 (non-NY)	0.00	0.00
29	Transco-Z6 (NY)	2.53	0.07
30	Iroquois-Z2	2.94	(0.06)

DISCLAIMER: The content herein is privileged and confidential. Content is presented for informational purposes and is a reflection of the market opinions of its authors subject to change without notice. Content is derived from sources believed to be accurate at the time of release but carries no guarantee of accuracy or completeness. Mansfield Energy Corp and its clients may or may not take positions similar or opposite those discussed herein. The reader should realize that the trading of commodities involves risk, and the reader assumes all responsibility for the risk of financial losses.





NATURAL GAS BASIS FUTURES, HENRY HUB SPOT PRICES, AND FORWARD CURVE



CME NG Option Prices

ATM Call

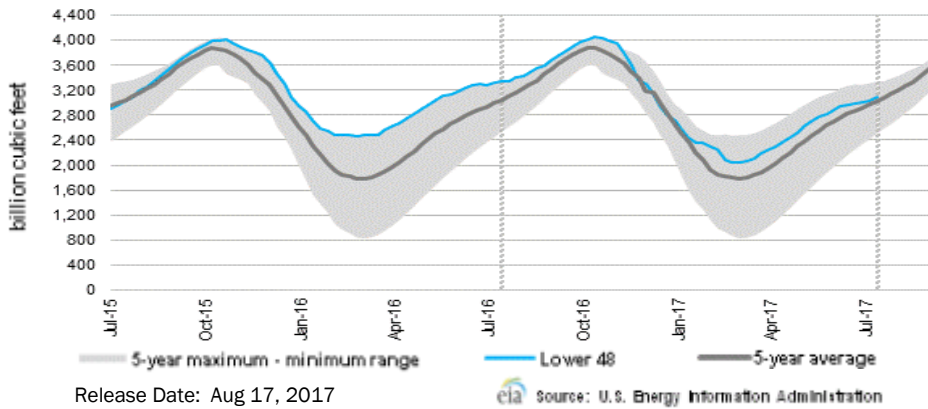
Month	Strike	Close	Imp Vol
Sep-17	2.900	0.056	37.5
Oct-17	2.950	0.109	30.0
Nov-17	3.050	0.150	31.9
Dec-17	3.150	0.228	33.7
Jan-18	3.250	0.294	37.5
Feb-18			
Mar-18			
Apr-18			
May-18			
Jun-18			
Jul-18			
Aug-18			
Sep-18			
Oct-18			
Nov-18			
Dec-18			
Jan-19			

CME NG Option Prices

ATM Put

Month	Strike	Close	Imp Vol
Sep-17	2.900	0.028	30.0
Oct-17	2.950	0.099	28.1
Nov-17	3.050	0.165	30.0
Dec-17	3.150	0.197	31.9
Jan-18	3.250	0.271	36.6
Feb-18			
Mar-18			
Apr-18			
May-18			
Jun-18			
Jul-18			
Aug-18			
Sep-18			
Oct-18			
Nov-18			
Dec-18			
Jan-19			

WEEKLY GAS IN UNDERGROUND STORAGE WITH 5-YR RANGE



Rig Count

Report Date: August 18, 2017

	Total	Change
US -	946	(3)
CN -	214	(6)

EIA Weekly NG Storage Estimates and Surveys for August 24, 2017

ARM — +47  
 PIRA — +45  
 Reuters — +45

EIA ACTUAL — Due Today At 10:30 AM EST / 9:30 AM CPT

Total Working Gas In Storage

**3,082 BCF**

+53 BCF (LAST WEEK)  
 (254) BCF (LAST YEAR)  
 +55 BCF (5-YR AVG)

U.S. Natural Gas Supply Gas Week 8/10 - 8/16

Average daily values (BCF/D):  
Last Year (BCF/d)  
 Dry Production — +71.2  
 Total Supply — +78.1  
Last Week (BCF/d)  
 Dry Production — +73.2  
 Total Supply — +79.1

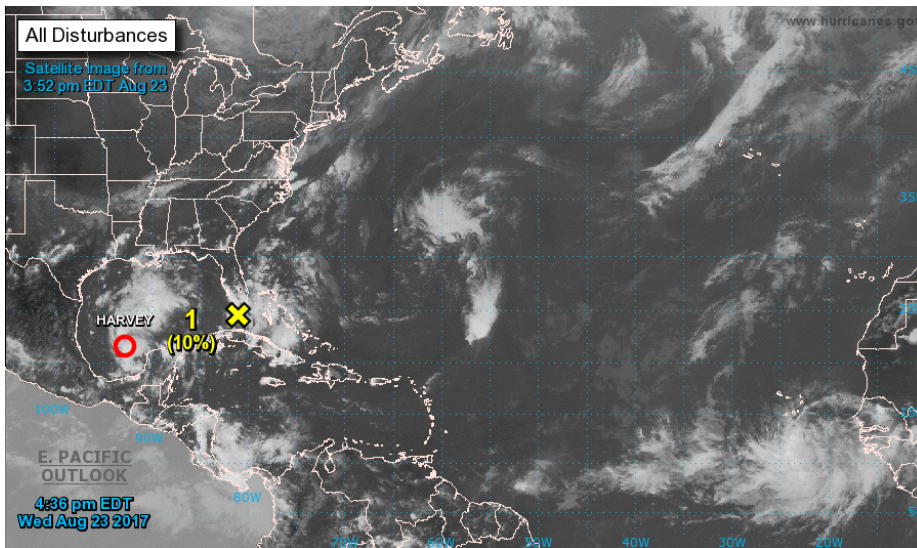
[NEXT REPORT ON AUG 24]

U.S. Natural Gas Demand Gas Week 8/10 - 8/16

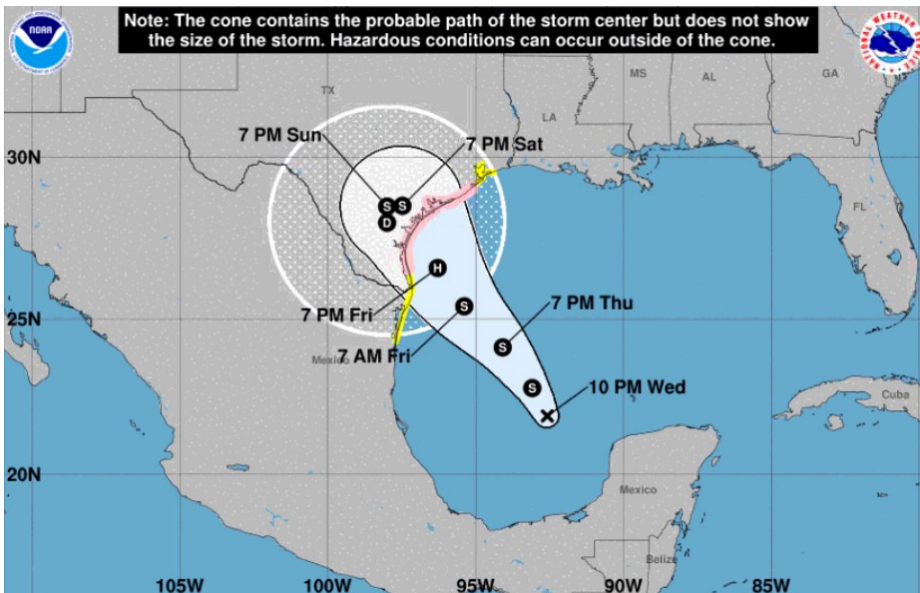
Average daily values (BCF/D):  
Last Year (BCF/d)  
 Power — +36.9  
 Total Demand — +76.5  
Last Week (BCF/d)  
 Power — +33.0  
 Total Demand — +72.5

[NEXT REPORT ON AUG 24]

TROPICAL STORM ACTIVITY— ATLANTIC

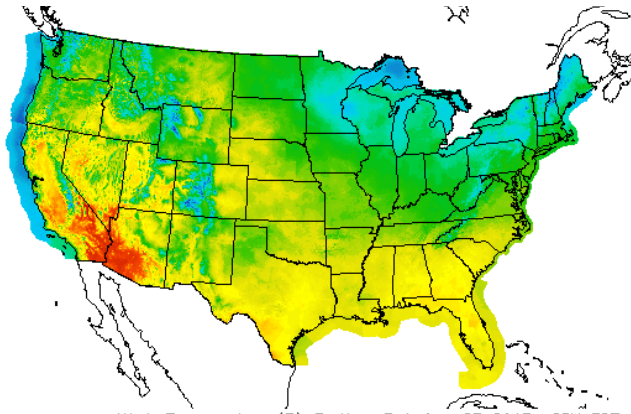


HARVEY



WEATHER – HIGH / LOW TEMPERATURE TOMORROW

HIGH Temperature



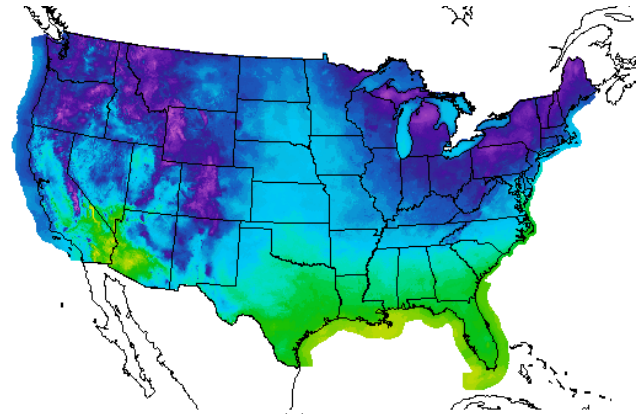
High Temperature(F) Ending Fri Aug 25 2017 8PM EDT  
(Sat Aug 26 2017 00Z)



National Digital Forecast Database  
20z issuance Graphic created-Aug 23 4:27PM EDT



LOW Temperature



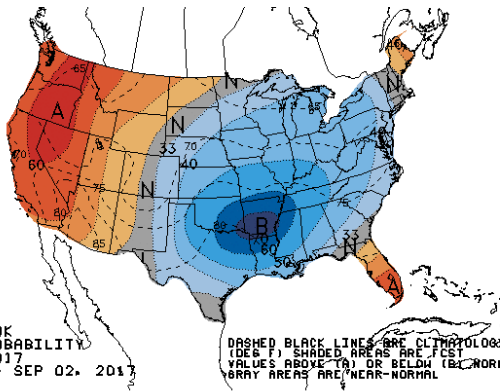
Low Temperature(F) Ending Sat Aug 26 2017 8AM EDT  
(Sat Aug 26 2017 12Z)



National Digital Forecast Database  
18z issuance Graphic created-Aug 23 2:26PM EDT

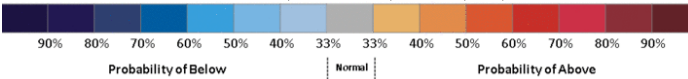


WEATHER – 6 TO 10 DAY OUTLOOK – NOAA  
Temperature

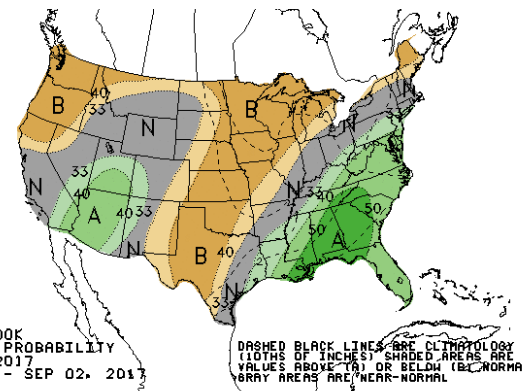


6-10 DAY OUTLOOK  
TEMPERATURE PROBABILITY  
MADE 23 AUG 2017  
VALID AUG 29 - SEP 02, 2017

DASHED BLACK LINES ARE CLIMATOLOGY  
(DEG F) SHADED AREAS ARE FCST  
VALUES ABOVE (+) OR BELOW (-) NORMAL  
GRAY AREAS ARE NEAR-NORMAL

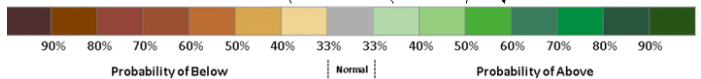


Precipitation

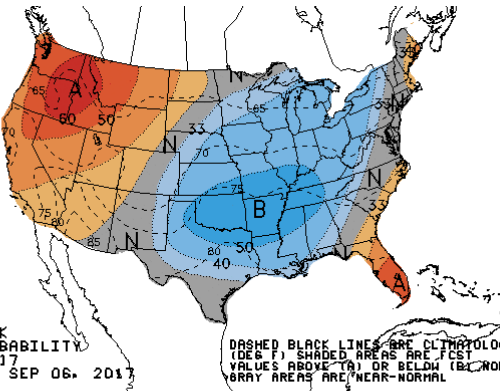


6-10 DAY OUTLOOK  
PRECIPITATION PROBABILITY  
MADE 23 AUG 2017  
VALID AUG 29 - SEP 02, 2017

DASHED BLACK LINES ARE CLIMATOLOGY  
(10THS OF INCHES) SHADED AREAS ARE FCST  
VALUES ABOVE (+) OR BELOW (-) NORMAL  
GRAY AREAS ARE NEAR-NORMAL

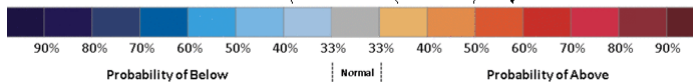


WEATHER – 8 TO 14 DAY OUTLOOK – NOAA  
Temperature

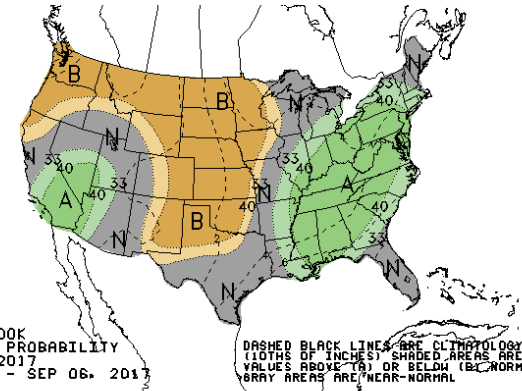


8-14 DAY OUTLOOK  
TEMPERATURE PROBABILITY  
MADE 23 AUG 2017  
VALID AUG 31 - SEP 06, 2017

DASHED BLACK LINES ARE CLIMATOLOGY  
(DEG F) SHADED AREAS ARE FCST  
VALUES ABOVE (+) OR BELOW (-) NORMAL  
GRAY AREAS ARE NEAR-NORMAL

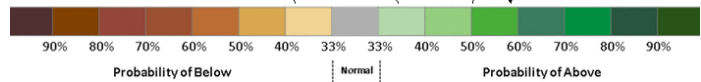


Precipitation



8-14 DAY OUTLOOK  
PRECIPITATION PROBABILITY  
MADE 23 AUG 2017  
VALID AUG 31 - SEP 06, 2017

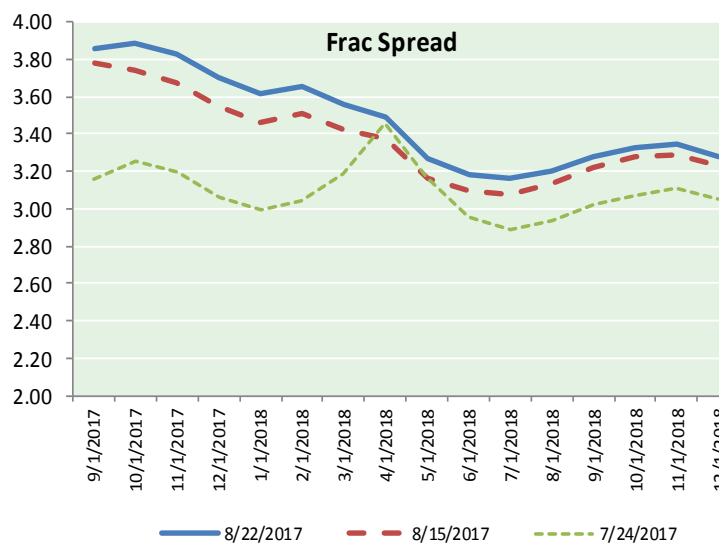
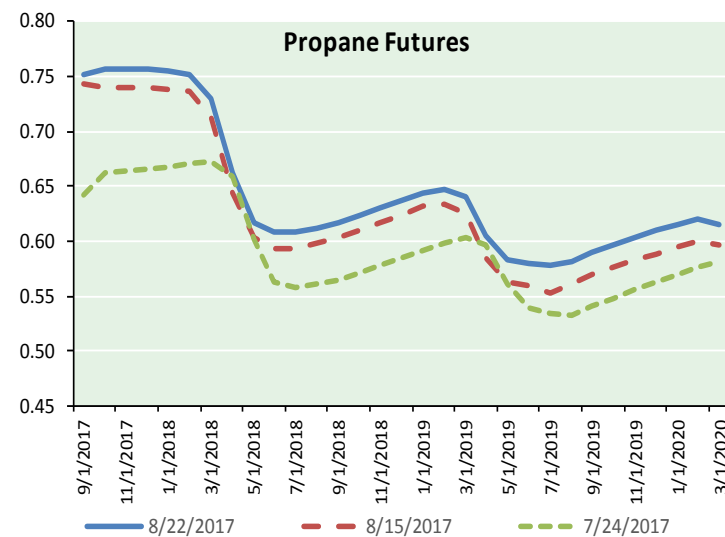
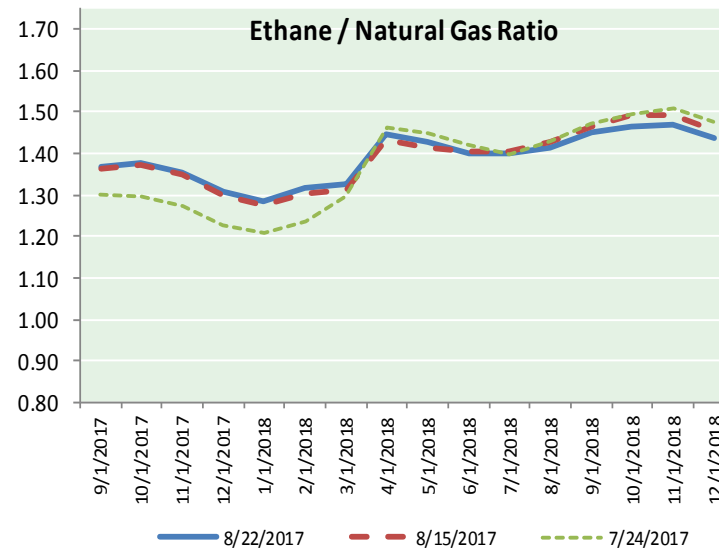
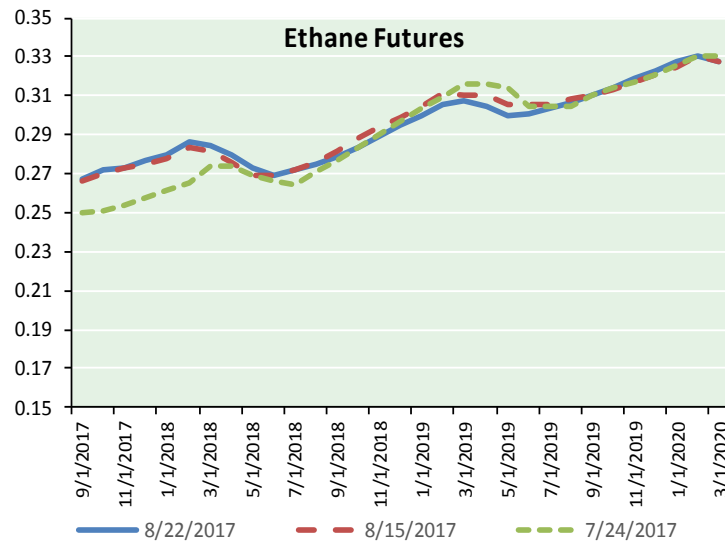
DASHED BLACK LINES ARE CLIMATOLOGY  
(10THS OF INCHES) SHADED AREAS ARE FCST  
VALUES ABOVE (+) OR BELOW (-) NORMAL  
GRAY AREAS ARE NEAR-NORMAL



# NATURAL GAS NEWS



## ETHANE FUTURES, NG/ETHANE RATIO, PROPANE FUTURES, AND THE FRAC SPREAD



### CME Future Prices

#### Ethane (C2)

##### Non-LDH— Mont Belvieu

Month	Close	Change
Sep-17	0.267	(0.005)
Oct-17	0.272	(0.012)
Nov-17	0.273	(0.010)
Dec-17	0.277	(0.010)
Jan-18	0.280	(0.009)
Feb-18	0.286	(0.008)
Mar-18	0.285	(0.006)
Apr-18	0.280	(0.006)
May-18	0.273	(0.006)
Jun-18	0.269	(0.005)
Jul-18	0.272	(0.005)
Aug-18	0.275	(0.005)

1YR Strip 0.276 (0.007)

### CME Future Prices

#### Propane (C3)

##### Non-LDH— Mont Belvieu

Month	Close	Change
Sep-17	0.752	0.000
Oct-17	0.756	0.000
Nov-17	0.756	(0.000)
Dec-17	0.756	0.001
Jan-18	0.755	0.000
Feb-18	0.752	0.000
Mar-18	0.729	0.001
Apr-18	0.662	0.000
May-18	0.617	0.001
Jun-18	0.608	0.000
Jul-18	0.608	0.000
Aug-18	0.612	(0.001)

1YR Strip 0.697 0.000

# NATURAL GAS NEWS



## Prompt WTI (CL) Crude

### Daily Sentiment

**NEUTRAL**



RESISTANCE

48.76 & 49.12

SUPPORT

47.79 & 47.18

### FOLLOW US ON TWITTER:



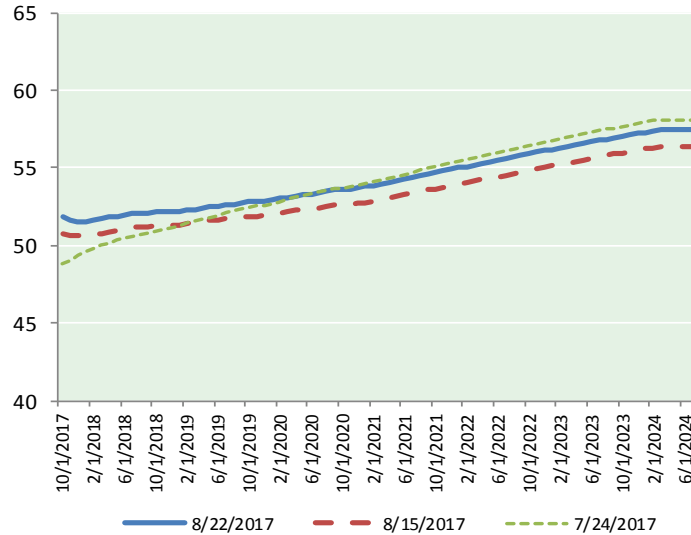
@MPG\_NatGasNews

## NYMEX Brent (BZ)

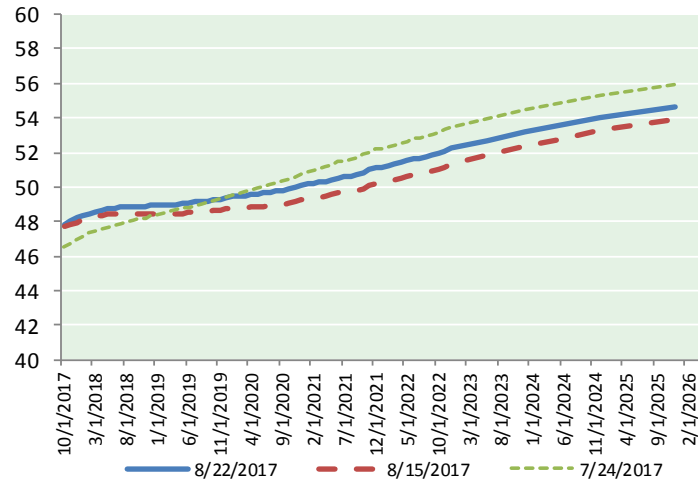
### Futures

Month	Close	Change
Oct-17	51.87	0.70
Nov-17	51.58	0.66
Dec-17	51.51	0.65
Jan-18	51.55	0.64
Feb-18	51.63	0.64
Mar-18	51.73	0.62
Apr-18	51.80	0.62
May-18	51.87	0.61
Jun-18	51.94	0.60
Jul-18	52.03	0.59
Aug-18	52.09	0.59
Sep-18	52.12	0.58
Oct-18	52.15	0.58
Nov-18	52.17	0.58
Dec-18	52.19	0.58
Jan-19	52.22	0.57
Feb-19	52.28	0.56
Mar-19	52.34	0.55
Apr-19	52.43	0.55
May-19	52.47	0.54
Jun-19	52.48	0.53
Jul-19	52.58	0.52
Aug-19	52.65	0.51
Sep-19	52.72	0.50
1YR Strip 2017	51.81	0.63
5YR Strip	53.36	0.48

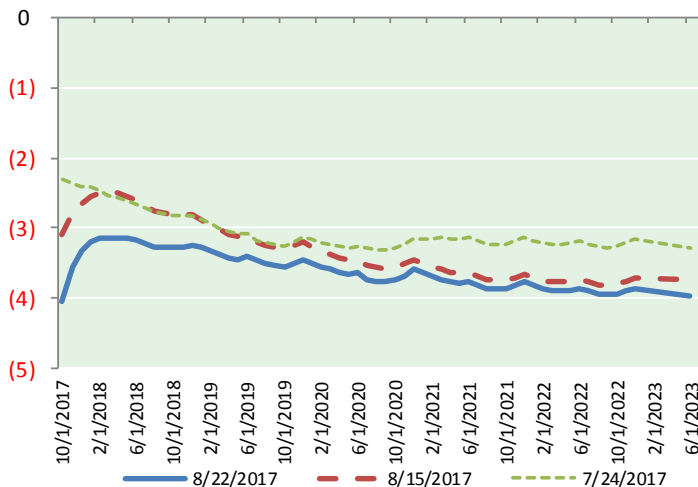
## BRENT CRUDE FORWARD CURVE



## WTI CRUDE FORWARD CURVE



## WTI-BRENT SPREAD



## FRAC Spread

### Specifications

Ethane : 42%	66,500 btu/g
Propane: 28%	90,830 btu/g
Butane: 11%	102,916 btu/g
Iso-Butane: 6%	98,935 btu/g
Natural Gasoline: 13%	115,021 btu/g

## Prompt NGL Futures

### (\$/gallon)

	Sep-17	Close	Change
Butane	0.913	(0.001)	
Iso-Butane	0.940	(0.004)	
Nat Gasoline	1.098	0.003	

## NYMEX WTI (CL) Futures

Month	Close	Change
Oct-17	47.83	0.58
Nov-17	48.02	0.60
Dec-17	48.18	0.62
Jan-18	48.34	0.63
Feb-18	48.47	0.64
Mar-18	48.58	0.64
Apr-18	48.66	0.64
May-18	48.72	0.64
Jun-18	48.77	0.63
Jul-18	48.80	0.62
Aug-18	48.82	0.62
Sep-18	48.84	0.61
Oct-18	48.87	0.60
Nov-18	48.90	0.58
Dec-18	48.94	0.57
Jan-19	48.95	0.56
Feb-19	48.96	0.55
Mar-19	48.97	0.54
Apr-19	48.99	0.53
May-19	49.02	0.52
Jun-19	49.08	0.51
Jul-19	49.11	0.50
Aug-19	49.14	0.49
Sep-19	49.18	0.49
1YR Strip 2017	48.50	0.62
5YR Strip	49.78	0.47