

NATURAL GAS



AUGUST 2, 2018

Prior Day's NYMEX Sep-18 Contract (CT)



NYMEX NG Futures

Month	Close	Change
Sep-18	2.758	(0.024)
Oct-18	2.770	(0.028)
Nov-18	2.811	(0.032)
Dec-18	2.919	(0.033)
Jan-19	3.005	(0.033)
Feb-19	2.971	(0.034)
Mar-19	2.868	(0.037)
Apr-19	2.582	(0.034)
May-19	2.556	(0.033)
Jun-19	2.586	(0.033)
Jul-19	2.619	(0.032)
Aug-19	2.626	(0.032)
Sep-19	2.608	(0.032)
Oct-19	2.625	(0.033)
Nov-19	2.677	(0.034)
Dec-19	2.806	(0.032)
Jan-20	2.900	(0.031)
Feb-20	2.863	(0.031)
Mar-20	2.763	(0.031)
Apr-20	2.478	(0.033)
May-20	2.444	(0.031)
Jun-20	2.473	(0.031)
Jul-20	2.503	(0.031)
Aug-20	2.510	(0.031)
1YR Strip	2.756	(0.032)
2018	2.815	(0.029)
5YR Strip	2.635	(0.031)

IN THE NEWS

Natural Gas Pipeline Explosions In Texas Critically Injure 5 Workers— Huffington Post reported: A series of natural gas pipeline explosions in Midland County, Texas sent five people to the hospital with critical burn injuries, and interrupted energy pipeline operations in the area, officials said. The region is the home to the Permian Basin, the largest U.S. oilfield, and is crisscrossed by

- **Natural Gas Pipeline Explosions In Texas Critically Injure 5 Workers**
- **The U.S. Is Still The Global Natural Gas King**

oil and gas pipelines. The cause of the explosion and fire were not immediately known. Five workers with critical injuries were airlifted to University Medical Center in Lubbock, Texas, and were being treated at the center's burn unit, said University Medical Center spokesman Eric Finley. Pipeline operator Kinder Morgan said on Wednesday it had isolated a portion of its El Paso Natural Gas Pipeline (EPNG) as a precaution, after being alerted to the fire near its line. One of its employees was injured and taken to the hospital, spokeswoman Sara Hughes said. For more on this story visit [huffingtonpost.com](https://bit.ly/2LWbOmU) or click <https://bit.ly/2LWbOmU>

The U.S. Is Still The Global Natural Gas King— Forbers reported: Data from the 2018 BP Statistical Review of World Energy show that last year the U.S. maintained a healthy lead as the global natural gas powerhouse. In 2017, the U.S. produced an average of 71.1 billion cubic feet per day (Bcf/d) of natural gas. That's a 1.0% increase from 2016 production, but not quite good enough to beat the 2015 record of 71.6 Bcf/d. That was still good enough for a 20.0% share of the world's total natural gas production. To put the U.S. production numbers in perspective, natural gas production for the entire Middle East was 63.8 Bcf/d. Russia, in second place among countries, saw its natural gas production surge by 8.2%, but at 61.5 Bcf/d that was still well behind the U.S. The U.S. had dominated global natural gas production until the 1980s, at which time it ceded the lead to Russia. For more on this story visit [Forbes.com](https://bit.ly/2OEtPEL) or click <https://bit.ly/2OEtPEL>

Prompt Natural Gas (NG) Daily Sentiment

BEARISH



RESISTANCE

2.78 & 2.81

SUPPORT

2.74 & 2.72

Trading Summary

NATURAL GAS

Futures	Close	Change
NG	2.758	(0.024)
Volume	421,955	(104,298)
Open Int.	1,540,751	24,816

CRUDE AND GASOLINE

Futures	Close	Change
Crude	67.66	(1.10)
RBOB	2.0451	(0.0354)
Crude/NG	24.53	(0.18)

METALS

Futures	Close	Change
Gold	1,217.90	(4.90)

EQUITIES

Exchange	Close	Change
DOW	25,333.82	(81.37)
S&P 500	-1,401.06	(2.93)

CURRENCY

Currency	Close	Change
EUR/USD	1.1621	(0.0039)
USD/CND	1.2405	0.0022

12 MONTH CANDLESTICK (WEEKLY)



Contact Us



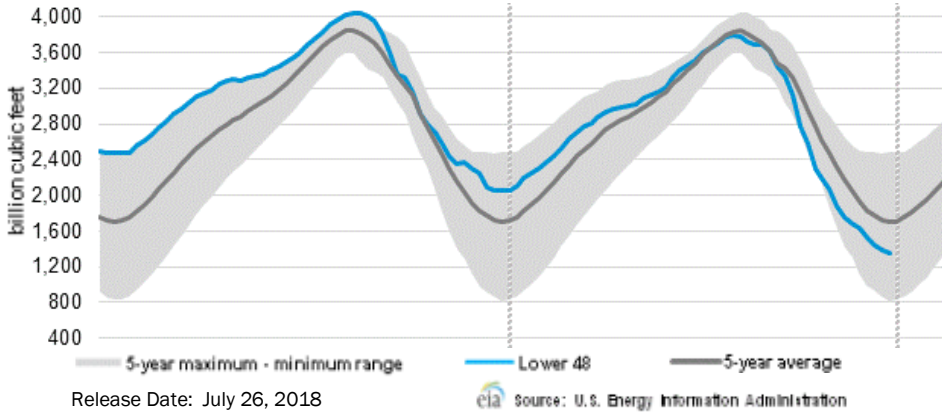
Mansfield Energy Corp
1025 Airport Pkwy
Gainesville, GA 30501
www.mansfield.energy
info@mansfieldoil.com

Phone: (800) 695-6626



NATURAL GAS NEWS

WEEKLY GAS IN UNDERGROUND STORAGE WITH 5-YR RANGE



Rig Count

Report Date: July 27, 2018

	Total	Change
US -	1048	+2
CN -	223	+12

EIA Weekly NG Storage Actual and Surveys for July 27, 2018

Released July 26, 2018

- Range (35) to (63)
- PIRA – (29)
- Citi Futures – (44)
- Reuters – (31)

EIA ACTUAL – 24

Total Working Gas In Storage

2,273 BCF

- 24 BCF (LAST WEEK)
- (705) BCF (LAST YEAR)
- (557) BCF (5-YR AVG)

U.S. Natural Gas Supply Gas Week 7/19 – 7/25

- Average daily values (BCF/D):**
- Last Year (BCF/d)
 - Dry Production – +73.0
 - Total Supply – +79.4
 - Last Week (BCF/d)
 - Dry Production – +80.5
 - Total Supply – +86.6

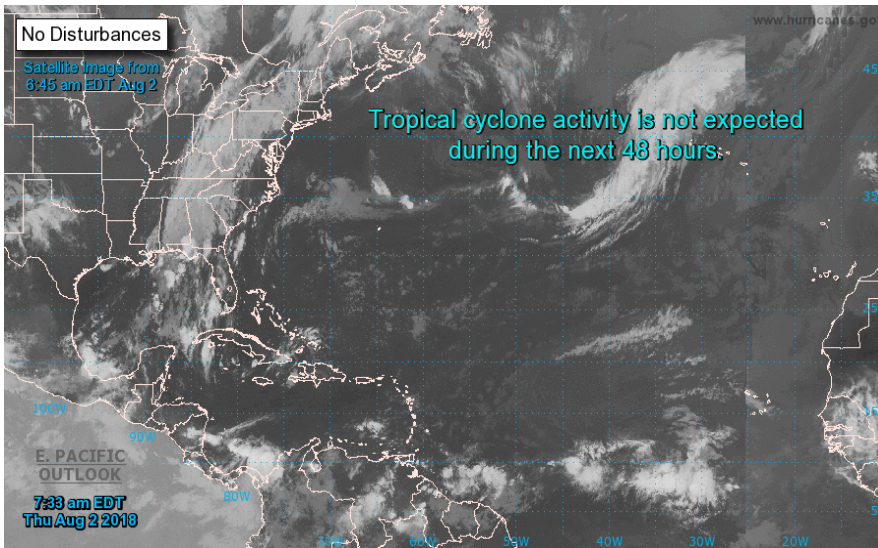
[NEXT REPORT ON Aug 3]

U.S. Natural Gas Demand Gas Week 7/19 – 7/25

- Average daily values (BCF/D):**
- Last Year (BCF/d)
 - Power – +38.3
 - Total Demand – +75.6
 - Last Week (BCF/d)
 - Power – +39.0
 - Total Demand – +80.0

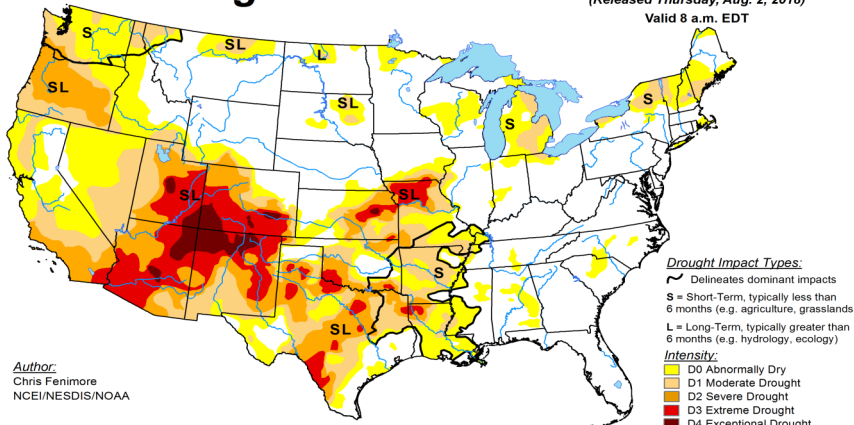
[NEXT REPORT ON Aug 3]

TROPICAL STORM ACTIVITY— ATLANTIC

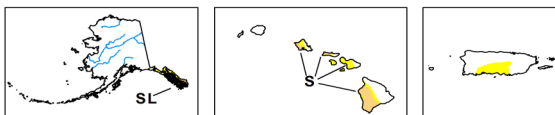


U.S. Drought Monitor

July 31, 2018
 (Released Thursday, Aug. 2, 2018)
 Valid 8 a.m. EDT



Author:
 Chris Fenimore
 NCEI/NESDIS/NOAA

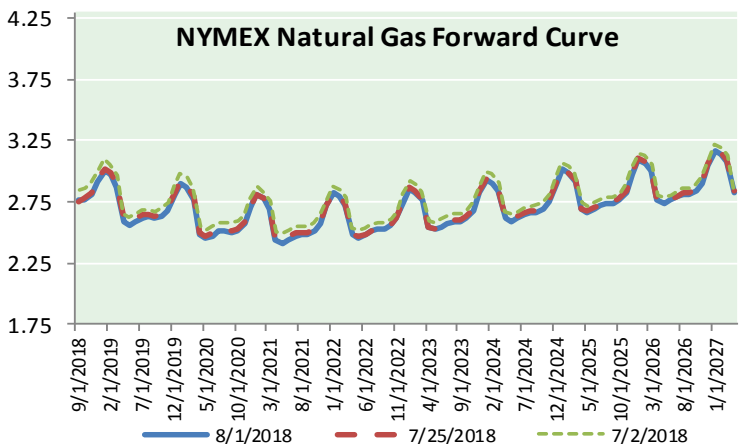
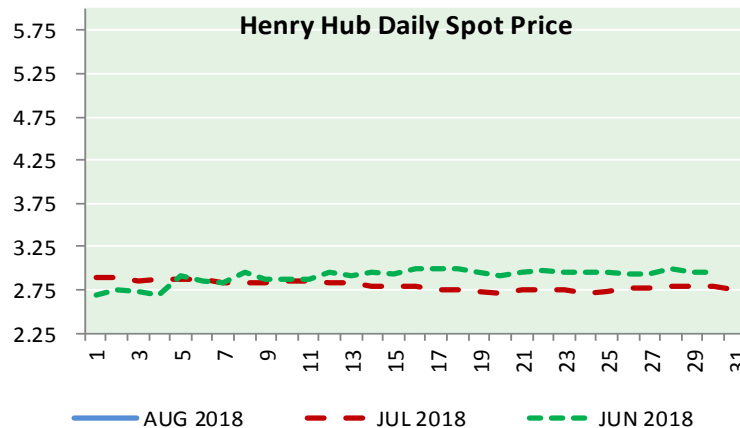
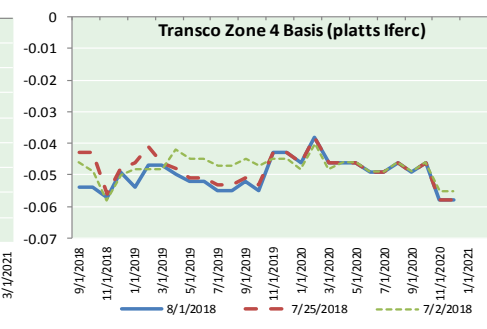
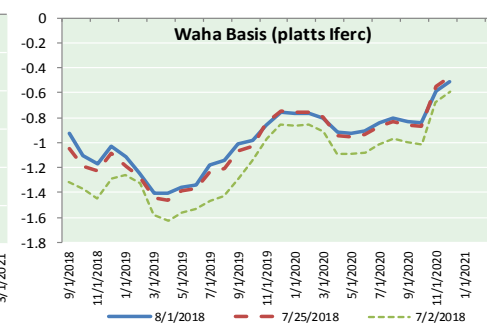
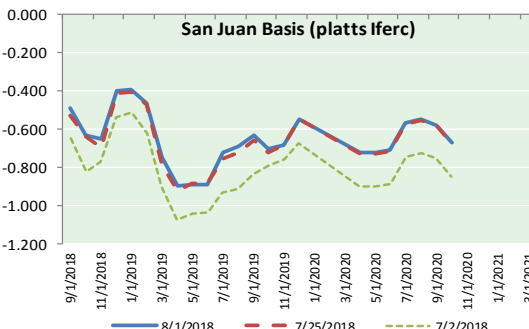
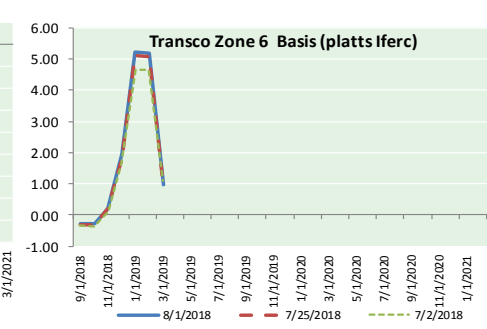
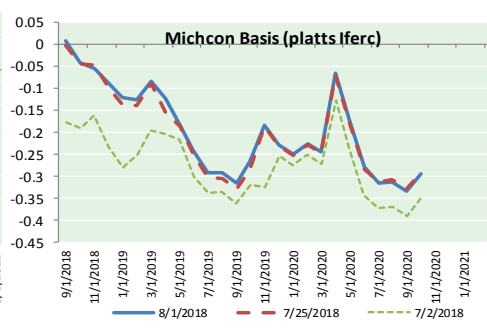
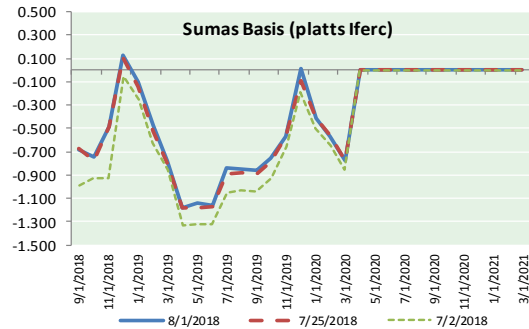


USDA NDMC NOAA
<http://droughtmonitor.unl.edu/>

NATURAL GAS NEWS



NATURAL GAS BASIS FUTURES, HENRY HUB SPOT PRICES, AND FORWARD CURVE



NYMEX WTI Delivery

Month Average (\$/bbl)

(Excluding Weekends and Holidays)

Month: August 2018

Day	Price	Day	Price
1	67.66	16	
2		17	
3		18	
4		19	
5		20	
6		21	
7		22	
8		23	
9		24	
10		25	
11		26	
12		27	
13		28	
14		29	
15		30	
		31	

Average (Aug) 67.6600
(through 08/01/2018)
Average (Jul) 70.5819
Average (Jun) 67.3229

CME NG Option Prices

ATM Call

Month	Strike	Close	Imp Vol
Oct-18			
Nov-18	2.750	0.096	20.6
Dec-18			
Jan-19			
Feb-19			

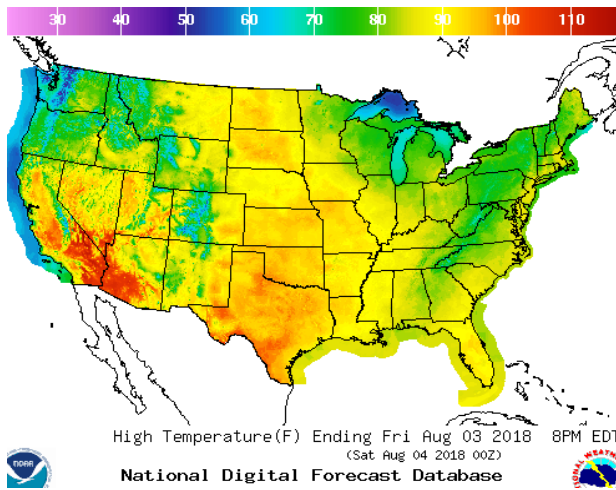
CME NG Option Prices

ATM Put

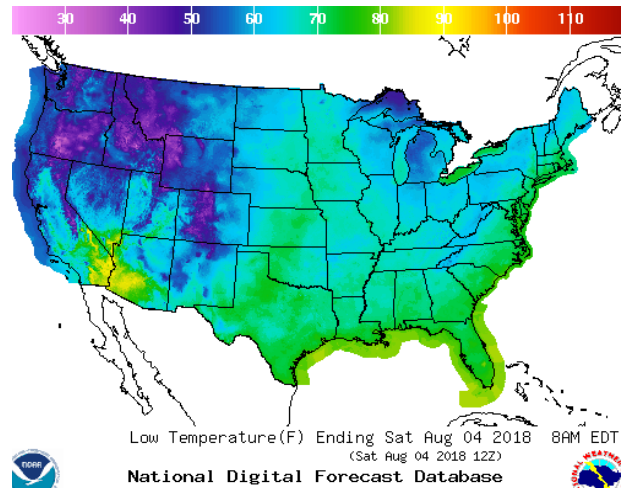
Month	Strike	Close	Imp Vol
Oct-18			
Nov-18	2.750	0.073	18.7
Dec-18			
Jan-19			
Feb-19			

WEATHER – HIGH / LOW TEMPERATURE TOMORROW

HIGH Temperature

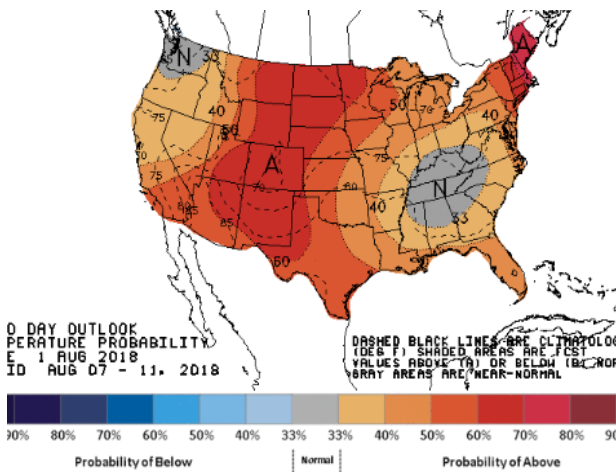


LOW Temperature

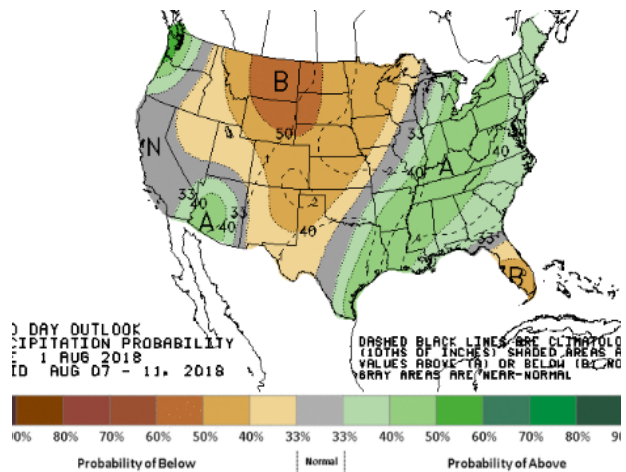


WEATHER – 6 TO 10 DAY OUTLOOK – NOAA

Temperature

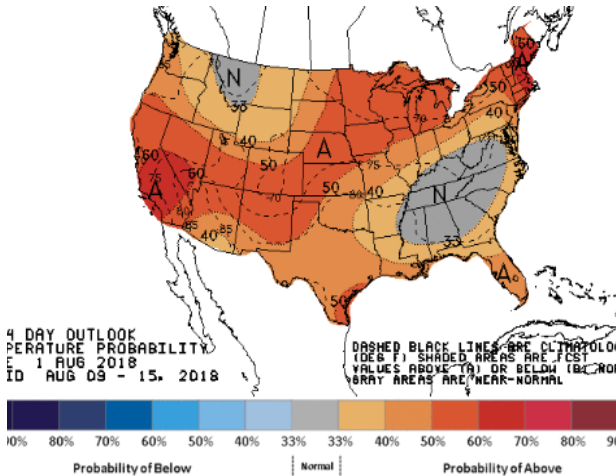


Precipitation

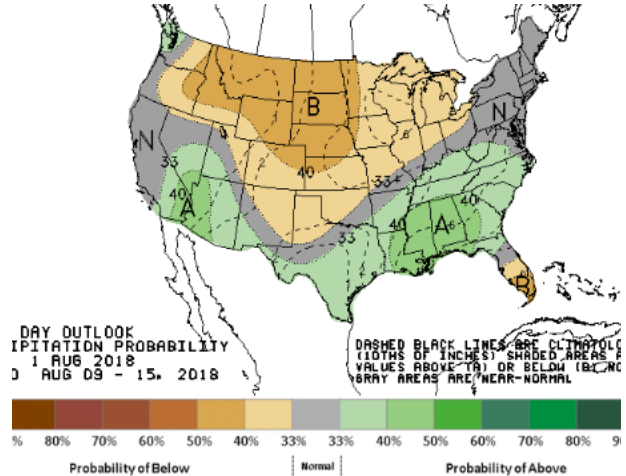


WEATHER – 8 TO 14 DAY OUTLOOK – NOAA

Temperature



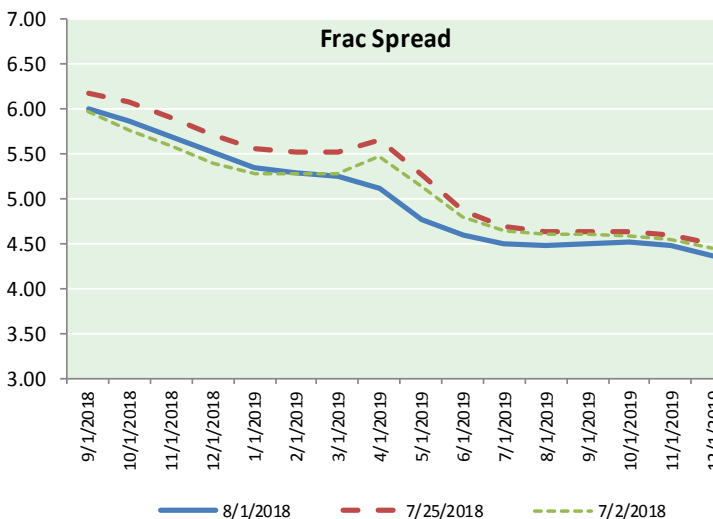
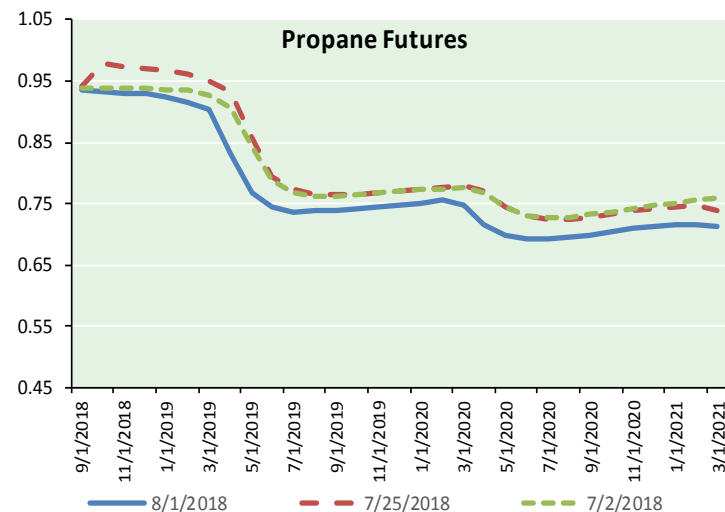
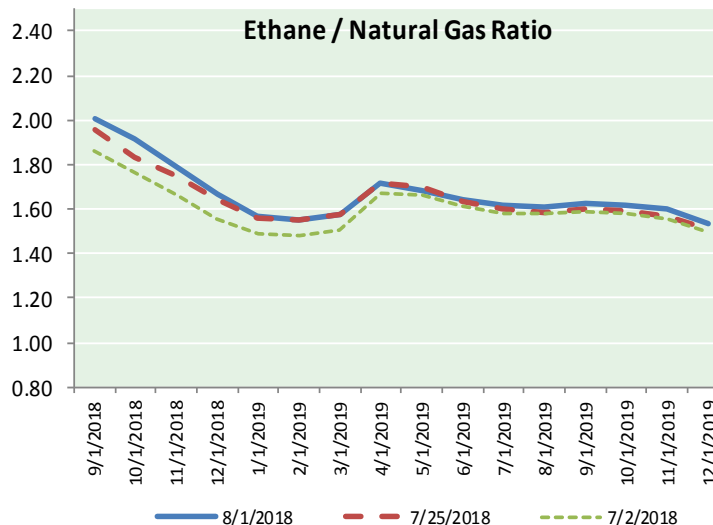
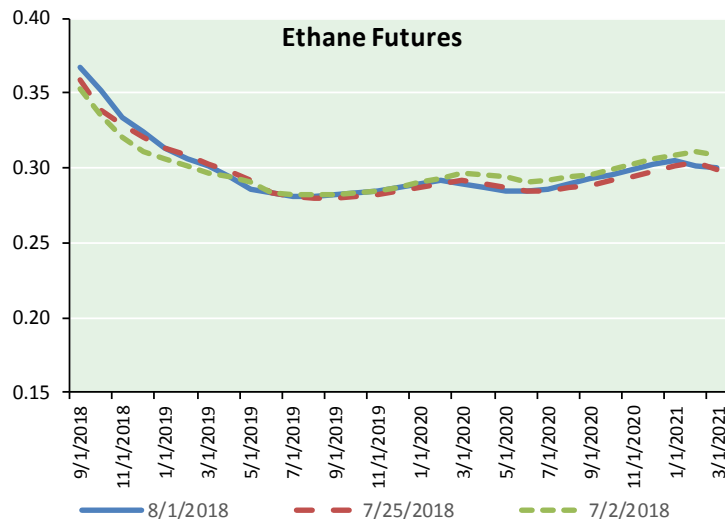
Precipitation





NATURAL GAS NEWS

ETHANE FUTURES, NG/ETHANE RATIO, PROPANE FUTURES, AND THE FRAC SPREAD



CME Future Prices

Ethane (C2)

Non-LDH— Mont Belvieu

Month	Close	Change
Sep-18	0.368	0.011
Oct-18	0.352	0.011
Nov-18	0.334	(0.001)
Dec-18	0.324	(0.005)
Jan-19	0.314	(0.008)
Feb-19	0.307	(0.008)
Mar-19	0.301	(0.006)
Apr-19	0.294	(0.008)
May-19	0.286	(0.009)
Jun-19	0.283	(0.004)
Jul-19	0.281	(0.003)
Aug-19	0.281	(0.002)

1YR Strip 0.310 (0.003)

CME Future Prices

Propane (C3)

Non-LDH— Mont Belvieu

Month	Close	Change
Sep-18	0.935	(0.004)
Oct-18	0.932	(0.020)
Nov-18	0.930	(0.021)
Dec-18	0.929	(0.021)
Jan-19	0.925	(0.023)
Feb-19	0.917	(0.029)
Mar-19	0.903	(0.033)
Apr-19	0.831	(0.089)
May-19	0.768	(0.079)
Jun-19	0.746	(0.039)
Jul-19	0.737	(0.025)
Aug-19	0.738	(0.015)

1YR Strip 0.858 (0.033)

NATURAL GAS NEWS



Prompt WTI (CL) Crude Daily Sentiment

BEARISH



RESISTANCE

68.35 & 69.04

SUPPORT

67.14 & 66.62

FOLLOW US ON TWITTER:



@MPG_NatGasNews

NYMEX Brent (BZ)

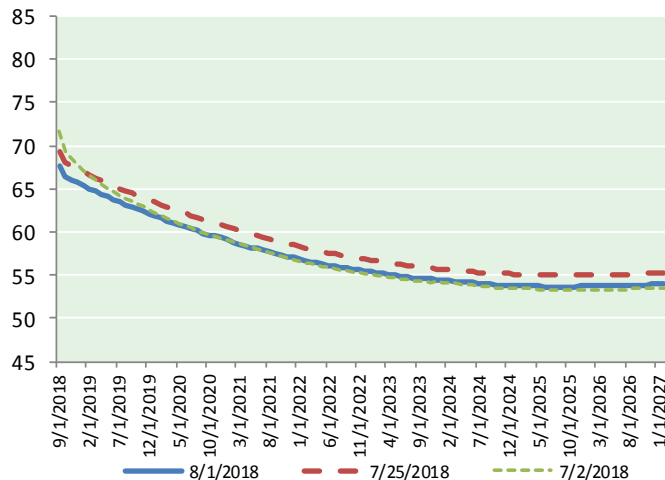
Futures

Month	Close	Change
Oct-18	72.39	(1.82)
Nov-18	72.67	(1.72)
Dec-18	72.76	(1.67)
Jan-19	72.74	(1.64)
Feb-19	72.64	(1.62)
Mar-19	72.48	(1.61)
Apr-19	72.31	(1.60)
May-19	72.09	(1.60)
Jun-19	71.84	(1.59)
Jul-19	71.61	(1.58)
Aug-19	71.37	(1.56)
Sep-19	71.12	(1.54)
Oct-19	70.84	(1.53)
Nov-19	70.59	(1.51)
Dec-19	70.29	(1.50)
Jan-20	70.02	(1.48)
Feb-20	69.77	(1.46)
Mar-20	69.52	(1.44)
Apr-20	69.26	(1.42)
May-20	69.02	(1.41)
Jun-20	68.77	(1.40)
Jul-20	68.51	(1.38)
Aug-20	68.25	(1.36)
Sep-20	67.99	(1.34)
1YR Strip	72.17	(1.63)
2018	72.61	(1.74)
5YR Strip	67.73	(1.24)

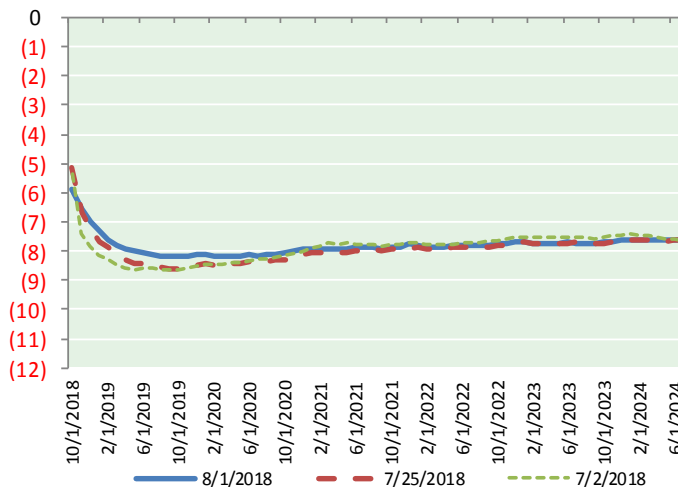
BRENT CRUDE FORWARD CURVE



WTI CRUDE FORWARD CURVE



WTI-BRENT SPREAD



FRAC Spread

Specifications

Ethane	: 42%	66,500 btu/g
Propane	: 28%	90,830 btu/g
Butane	: 11%	102,916 btu/g
Iso-Butane	: 6%	98,935 btu/g
Natural Gasoline	: 13%	115,021 btu/g

Prompt NGL Futures

(\$/gallon)

Sep-18	Close	Change
Butane	1.101	(0.143)
Iso-Butane	1.122	(0.085)
Nat Gasoline	1.508	(0.009)

NYMEX WTI (CL) Futures

Month	Close	Change
Sep-18	67.66	(1.10)
Oct-18	66.50	(1.13)
Nov-18	66.11	(1.16)
Dec-18	65.78	(1.19)
Jan-19	65.46	(1.25)
Feb-19	65.04	(1.27)
Mar-19	64.68	(1.27)
Apr-19	64.35	(1.29)
May-19	64.07	(1.29)
Jun-19	63.81	(1.26)
Jul-19	63.50	(1.25)
Aug-19	63.19	(1.25)
Sep-19	62.92	(1.23)
Oct-19	62.67	(1.21)
Nov-19	62.42	(1.19)
Dec-19	62.18	(1.17)
Jan-20	61.88	(1.15)
Feb-20	61.60	(1.13)
Mar-20	61.32	(1.12)
Apr-20	61.07	(1.10)
May-20	60.85	(1.07)
Jun-20	60.63	(1.04)
Jul-20	60.36	(1.02)
Aug-20	60.13	(0.99)
1YR Strip	65.01	(1.23)
2018	66.51	(1.15)
5YR Strip	59.30	(0.94)