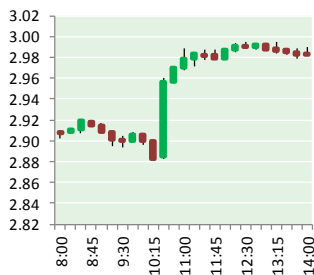


# NATURAL GAS



AUGUST 11, 2017

## Prior Day's NYMEX Sep-17 Contract (CT)



Aug-17 Settlement — \$2.969

### NYMEX NG Futures

Month	Close	Change
Sep-17	2.985	0.102
Oct-17	3.017	0.097
Nov-17	3.076	0.083
Dec-17	3.209	0.072
Jan-18	3.306	0.069
Feb-18	3.294	0.066
Mar-18	3.244	0.060
Apr-18	2.898	0.029
May-18	2.865	0.021
Jun-18	2.890	0.021
Jul-18	2.916	0.021
Aug-18	2.920	0.021
Sep-18	2.896	0.021
Oct-18	2.914	0.020
Nov-18	2.963	0.019
Dec-18	3.090	0.017
Jan-19	3.174	0.017
Feb-19	3.150	0.017
Mar-19	3.083	0.015
Apr-19	2.724	0.006
May-19	2.692	0.005
Jun-19	2.713	0.006
Jul-19	2.734	0.005
Aug-19	2.742	0.005
1YR Strip	3.052	0.055
2017	3.072	0.089
5YR Strip	2.872	0.015

## IN THE NEWS

Oil prices fall 2%, but natural gas futures rally to a 3-week high—Market Watch reports: Oil futures pulled back on Thursday, marking the lowest finish in more than two weeks, with U.S. prices failing to hold above \$50 a barrel as a report from OPEC

- Oil prices fall 2%, but natural gas futures rally to a 3-week high
- U.S. expected to be net exporter of natural gas this year

showed that crude production among the group's members rose in July. Natural-gas futures, meanwhile, finished at a three-week high after U.S. government data revealed a smaller-than-expected weekly climb in domestic supplies of the fuel. The \$50 level "remains a huge psychological barrier for U.S. oil," said Robbie Fraser, commodity analyst at Schneider Electric. Elsewhere on Nymex, prices for natural gas ended at their highest level in three weeks following data from the U.S. Energy Information Administration Thursday that showed domestic supplies of natural gas rose by 28 billion cubic feet for the week ended Aug. 4. For more visit [marketwatch.com](http://marketwatch.com) or click <http://on.mktw.net/2wAipNo>

U.S. Expected to Be Net Exporter of Natural Gas This Year—The Maritime Executive reports: The U.S. has been a net exporter for three of the past four months and is expected to continue to export more natural gas than it imports for the rest of 2017 and throughout 2018. The trend is expected to continue past 2018 because of growing U.S. natural gas exports to Mexico, declining pipeline imports from Canada and increasing exports of LNG. In addition, supplies of natural gas out of Appalachia into the Mid-western states are likely to gradually displace some pipeline imports from Canada as well as increase U.S. pipeline exports to Canada from both Michigan and New York. For more on this story visit [maritime-executive.com](http://maritime-executive.com) or click <http://bit.ly/2wAoNQz>

## 12 MONTH CANDLESTICK (WEEKLY)



## Prompt Natural Gas (NG) Daily Sentiment

NEUTRAL



RESISTANCE  
3.03 & 3.07  
SUPPORT  
2.91 & 2.83

## Trading Summary

### NATURAL GAS

Futures	Close	Change
NG	2.985	0.102
Volume	653,234	(640,202)
Open Int.	1,334,242	4,666

### CRUDE AND GASOLINE

Futures	Close	Change
Crude	48.59	(0.97)
RBOB	1.6028	(0.0172)
Crude/NG	16.28	(0.91)

### METALS

Futures	Close	Change
Gold	1,283.70	3.80

### EQUITIES

Exchange	Close	Change
DOW	21,844.01	(204.69)
S&P 500	2,294.62	(179.40)

### CURRENCY

Currency	Close	Change
EUR/USD	1.1792	0.0015
USD/CND	1.2727	(0.0013)

## Contact Us



Mansfield Energy Corp  
1025 Airport Pkwy  
Gainesville, GA 30501

[www.mansfield.energy](http://www.mansfield.energy)

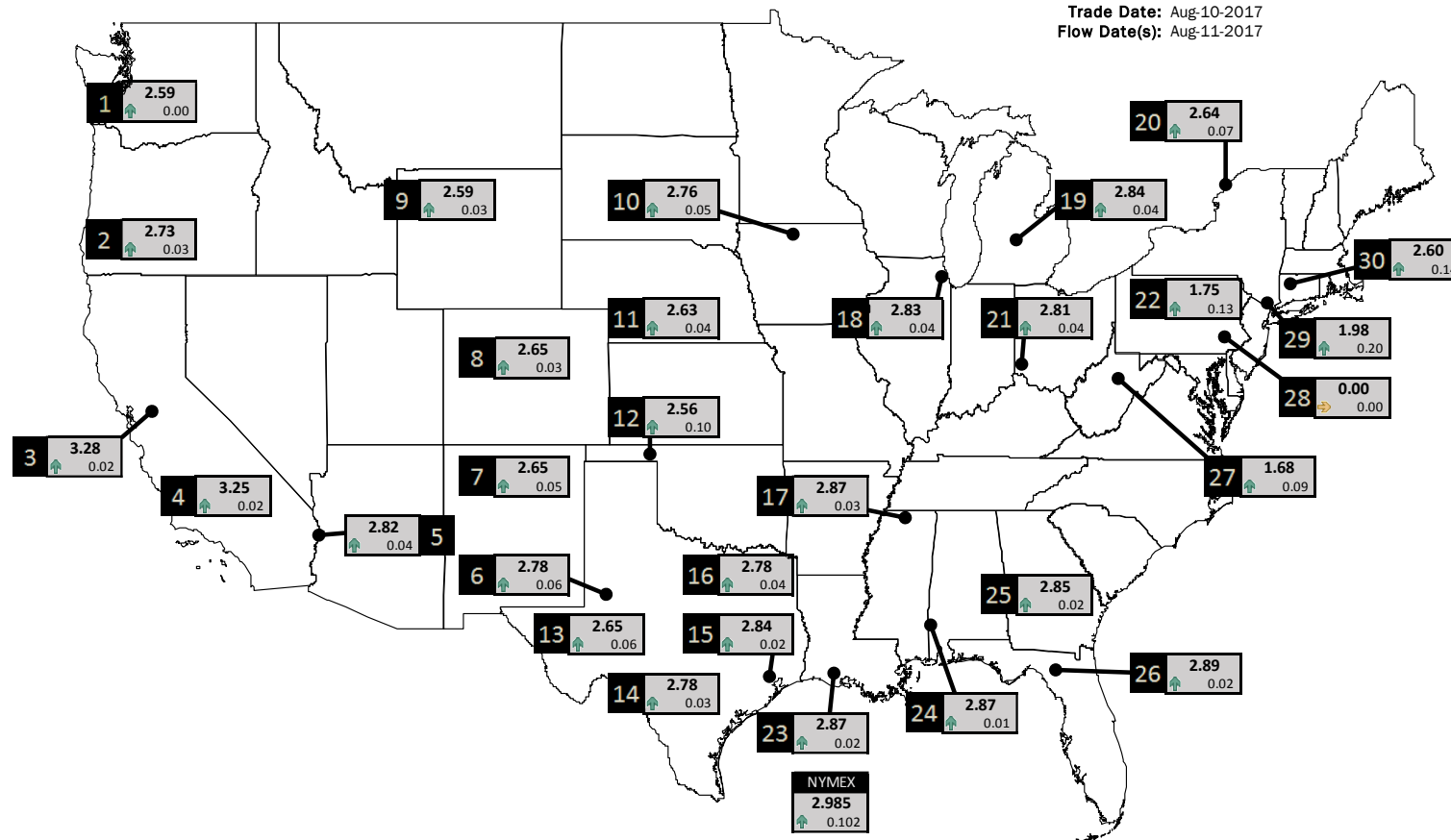
[info@mansfieldoil.com](mailto:info@mansfieldoil.com)

Phone: (800) 695-6626



# NATURAL GAS NEWS

## PHYSICAL SPOT NATURAL GAS PRICE MAP



ID	DAILY INDEX	PRICE	CHANGE
1	Stanfield	2.59	0.00
2	Malin	2.73	0.03
3	PG&E - Citygate	3.28	0.02
4	SoCal-Citygate	3.25	0.02
5	SoCal Border	2.82	0.04
6	Waha	2.78	0.06
7	EPSJ Blanco Pool	2.65	0.05
8	Opal Plant Tailgate	2.65	0.03
9	NWP-Wyoming	2.59	0.03
10	Ventura	2.76	0.05

ID	DAILY INDEX	PRICE	CHANGE
11	NGPL-Midcont Pool	2.63	0.04
12	Panhandle	2.56	0.10
13	EP-Permian	2.65	0.06
14	TGP-ZO	2.78	0.03
15	Houston Ship Channel	2.84	0.02
16	NGPL-TXOK	2.78	0.04
17	TETCO-M1.30	2.87	0.03
18	Chicago Citygates	2.83	0.04
19	Michcon	2.84	0.04
20	Iroquois (into)	2.64	0.07

ID	DAILY INDEX	PRICE	CHANGE
21	REX E-ANR	2.81	0.04
22	Leidy-Transco	1.75	0.13
23	Henry	2.87	0.02
24	Transco-85	2.87	0.01
25	Sonat-ZO South	2.85	0.02
26	FGT-Z3	2.89	0.02
27	Dominion-South	1.68	0.09
28	Transco-Z6 (non-NY)	0.00	0.00
29	Transco-Z6 (NY)	1.98	0.20
30	Iroquois-Z2	2.60	0.14

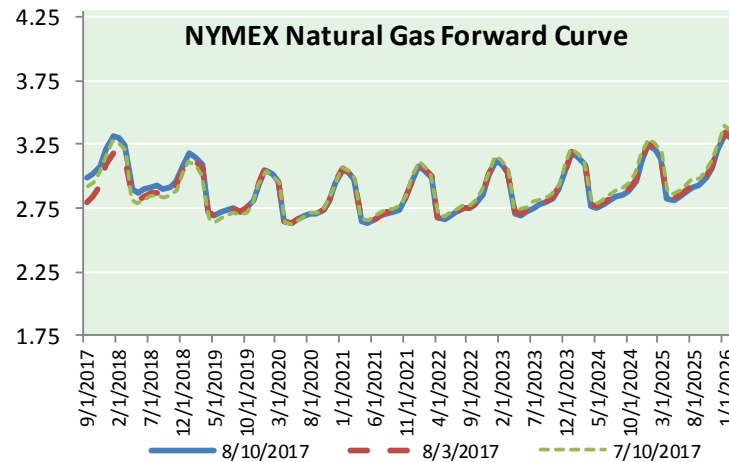
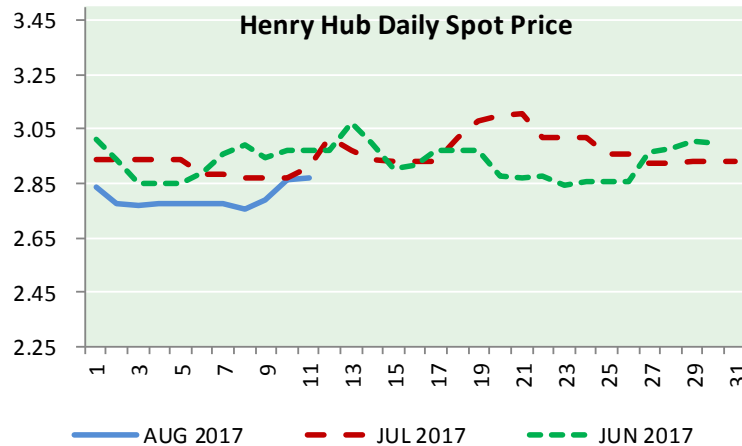
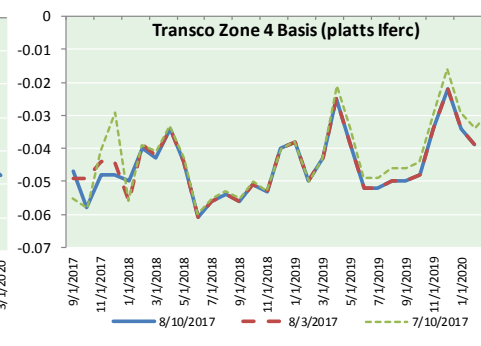
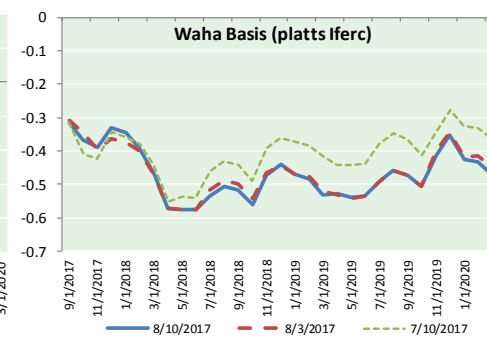
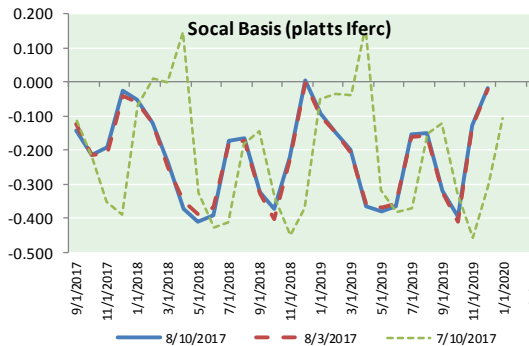
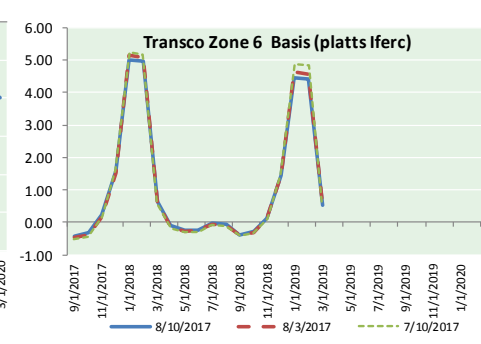
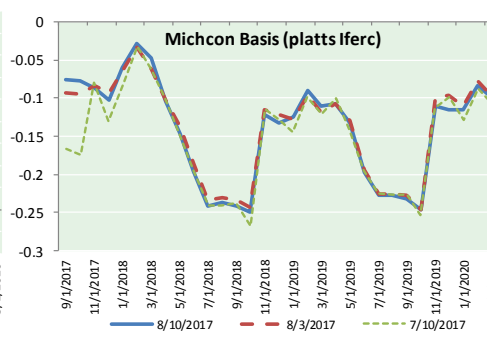
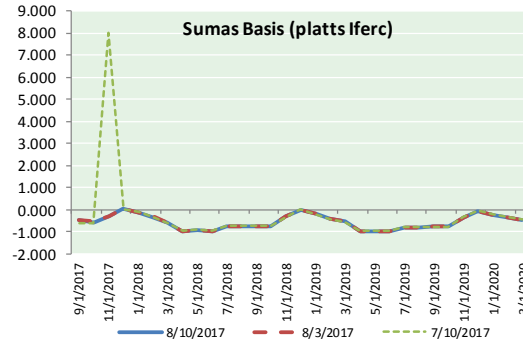
DISCLAIMER: The content herein is privileged and confidential. Content is presented for informational purposes and is a reflection of the market opinions of its authors subject to change without notice. Content is derived from sources believed to be accurate at the time of release but carries no guarantee of accuracy or completeness. Mansfield Energy Corp and its clients may or may not take positions similar or opposite those discussed herein. The reader should realize that the trading of commodities involves risk, and the reader assumes all responsibility for the risk of financial losses.





NATURAL GAS NEWS

NATURAL GAS BASIS FUTURES, HENRY HUB SPOT PRICES, AND FORWARD CURVE



CME NG Option Prices

ATM Call

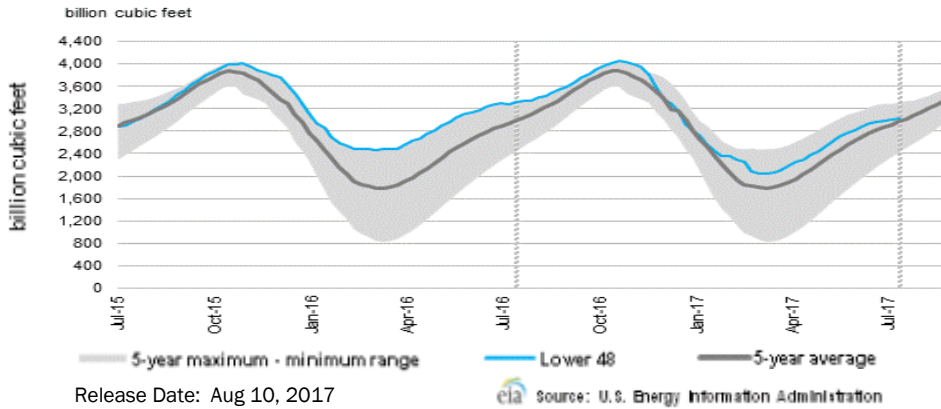
Month	Strike	Close	Imp Vol
Sep-17	3.000	0.065	28.1
Oct-17	3.000	0.134	30.0
Nov-17	3.050	0.190	31.9
Dec-17	3.200	0.239	33.7
Jan-18	3.300	0.304	37.5
Feb-18			
Mar-18			
Apr-18			
May-18			
Jun-18			
Jul-18			
Aug-18			
Sep-18			
Oct-18			
Nov-18			
Dec-18			
Jan-19			

CME NG Option Prices

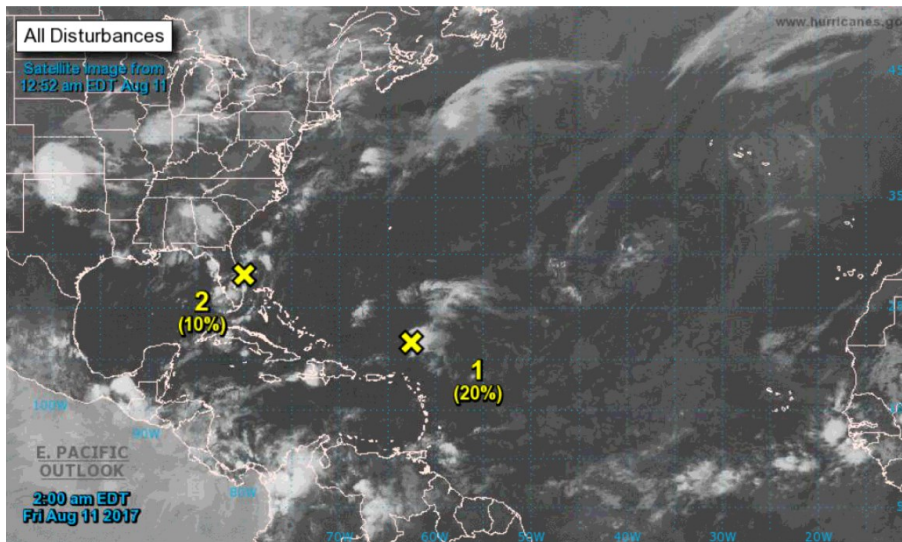
ATM Put

Month	Strike	Close	Imp Vol
Sep-17	3.000	0.082	28.1
Oct-17	3.000	0.119	29.0
Nov-17	3.050	0.169	31.9
Dec-17	3.200	0.200	29.0
Jan-18	3.300	0.289	35.6
Feb-18			
Mar-18			
Apr-18			
May-18			
Jun-18			
Jul-18			
Aug-18			
Sep-18			
Oct-18			
Nov-18			
Dec-18			
Jan-19			

WEEKLY GAS IN UNDERGROUND STORAGE WITH 5-YR RANGE



TROPICAL STORM ACTIVITY— ATLANTIC



For the North Atlantic...Caribbean Sea and the Gulf of Mexico:

1. An area of disturbed weather centered a couple of hundred miles north of the northern Leeward Islands is associated with a broad trough of low pressure. While upper-level winds are forecast to become more favorable for development by the weekend, dry air aloft could limit the system's thunderstorm activity, making the overall environment only marginally conducive. The trough is expected to move northwestward today, then northward over the weekend across the western Atlantic Ocean.

- \* Formation chance through 48 hours...low...20 percent.
- \* Formation chance through 5 days...medium...40 percent.

2. A weak and elongated area of low pressure is centered just northeast of Cape Canaveral, Florida. This low is accompanied by disorganized showers and thunderstorms extending from southern Florida northeastward across the southwestern Atlantic. Significant development is not anticipated but this system could bring locally heavy rains to portions of the Florida peninsula as it moves northwestward and northward during the next day or two.

- \* Formation chance through 48 hours...low...10 percent.
- \* Formation chance through 5 days...low...10 percent.

Rig Count

Report Date: August 4, 2017

	Total	Change
US -	954	(4)
CN -	217	(3)

EIA Weekly NG Storage Actual and Surveys for August 10, 2017  
 Released August 3, 2017

PIRA — +36  
 Citi — +36  
 Reuters — +36

EIA ACTUAL — +28

Total Working Gas In Storage

**3,038 BCF**

+28 BCF (LAST WEEK)  
 (275) BCF (LAST YEAR)  
 +33 BCF (5-YR AVG)

U.S. Natural Gas Supply Gas Week 8/3 - 8/9

Average daily values (BCF/D):  
 Last Year (BCF/d)  
 Dry Production — +71.9  
 Total Supply — +79.0  
 Last Week (BCF/d)  
 Dry Production — +72.7  
 Total Supply — +78.8

[NEXT REPORT ON AUG 17]

U.S. Natural Gas Demand Gas Week 8/3 - 8/9

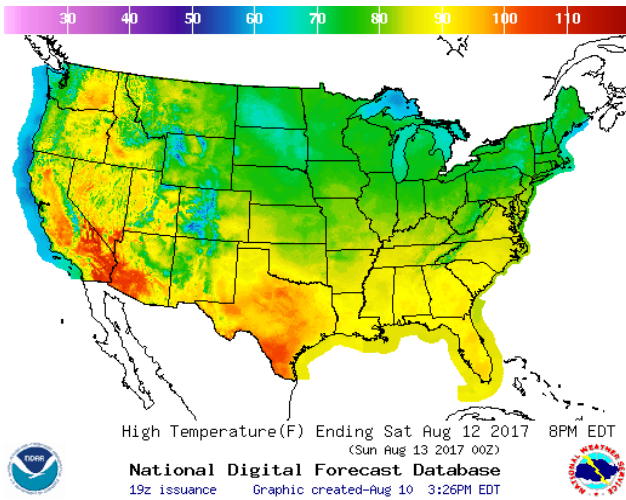
Average daily values (BCF/D):  
 Last Year (BCF/d)  
 Power — +37.8  
 Total Demand — +76.2  
 Last Week (BCF/d)  
 Power — +37.6  
 Total Demand — +74.6

[NEXT REPORT ON AUG 17]

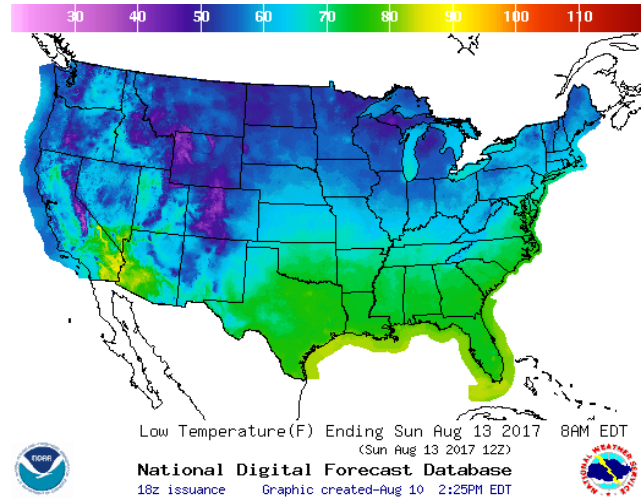


WEATHER – HIGH / LOW TEMPERATURE SATURDAY

HIGH Temperature

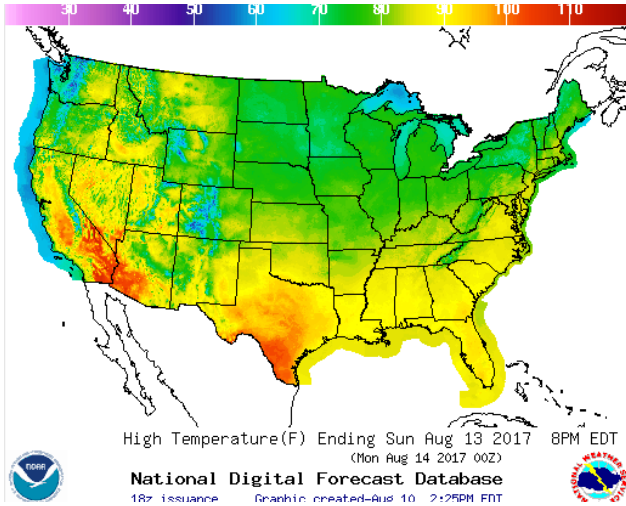


LOW Temperature

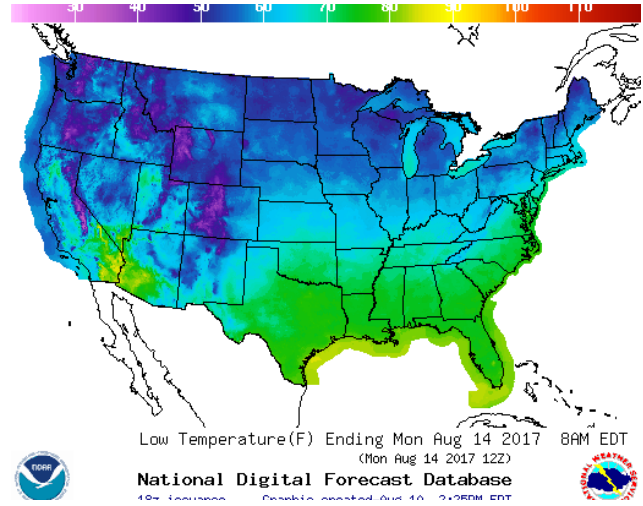


WEATHER – HIGH / LOW TEMPERATURE SUNDAY

HIGH Temperature

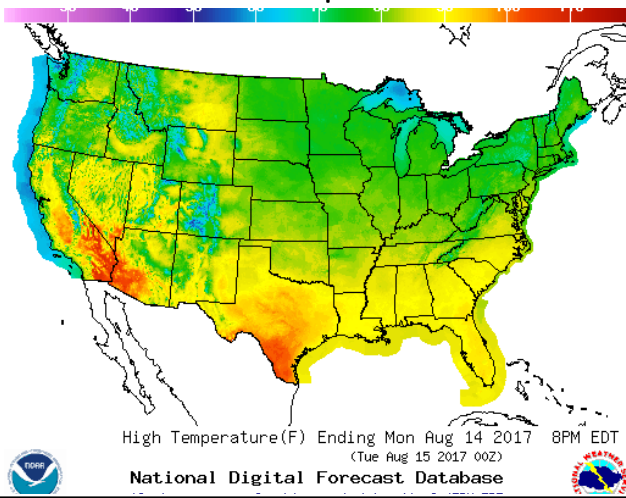


LOW Temperature

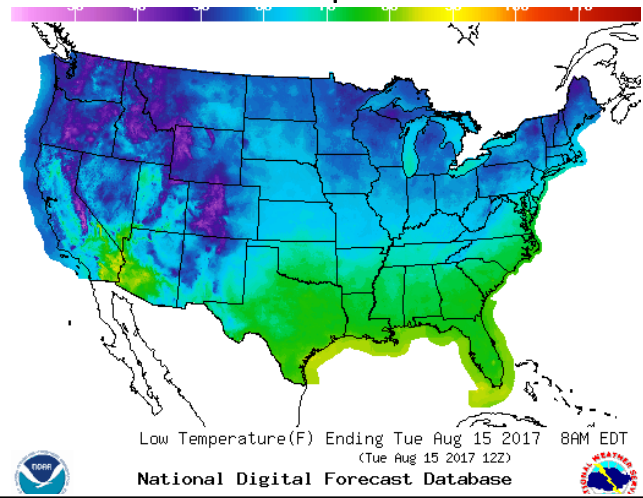


WEATHER – HIGH / LOW TEMPERATURE MONDAY

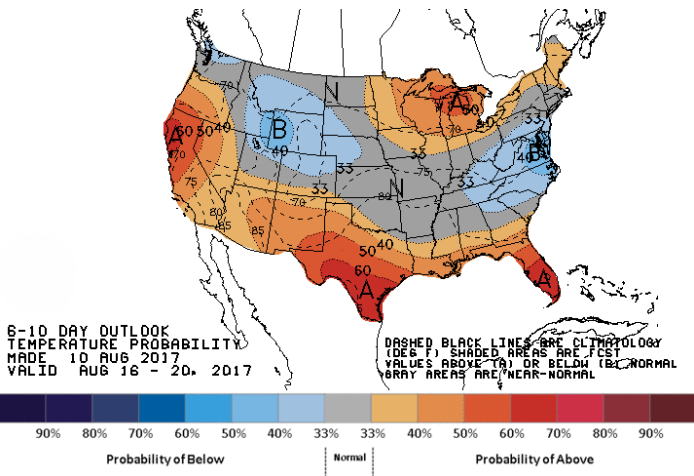
HIGH Temperature



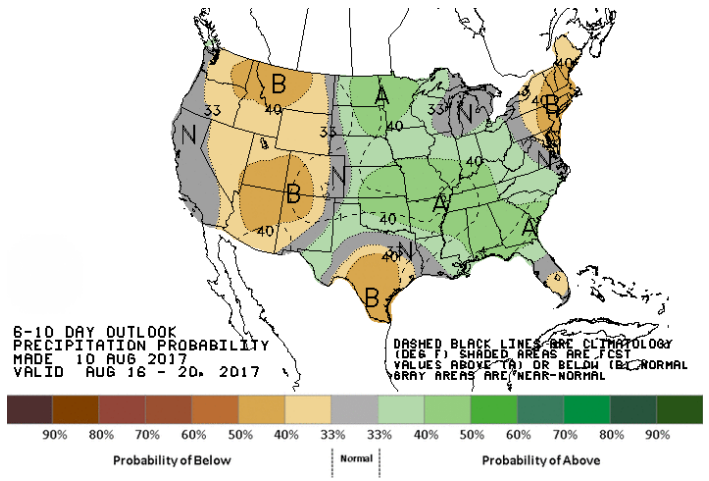
LOW Temperature



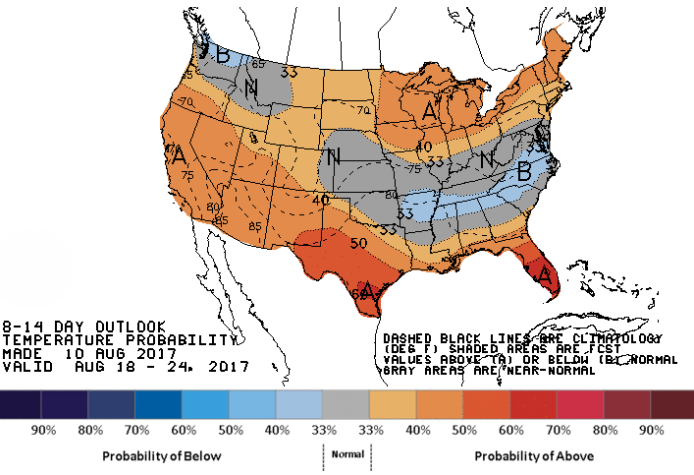
**WEATHER — 6 TO 10 DAY OUTLOOK — NOAA**  
Temperature



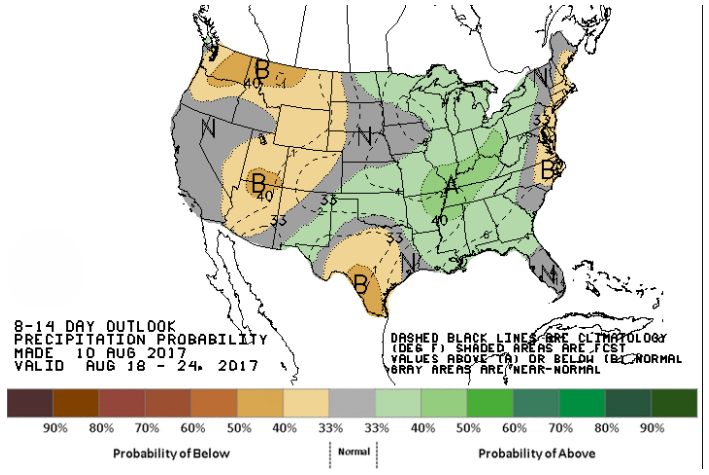
**Precipitation**



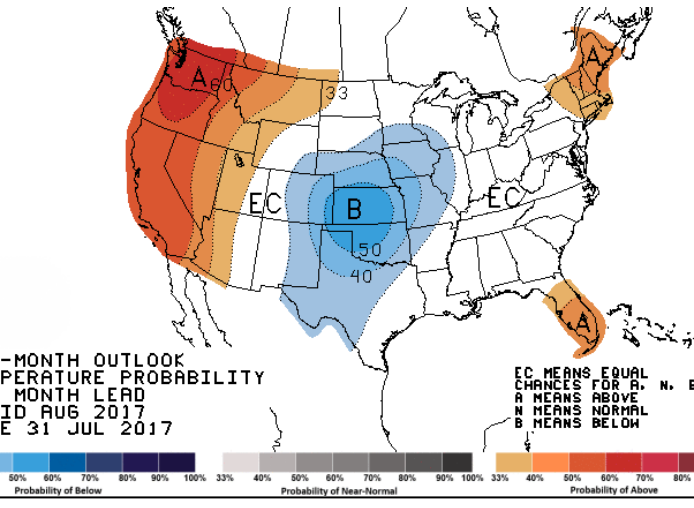
**WEATHER — 8 TO 14 DAY OUTLOOK — NOAA**  
Temperature



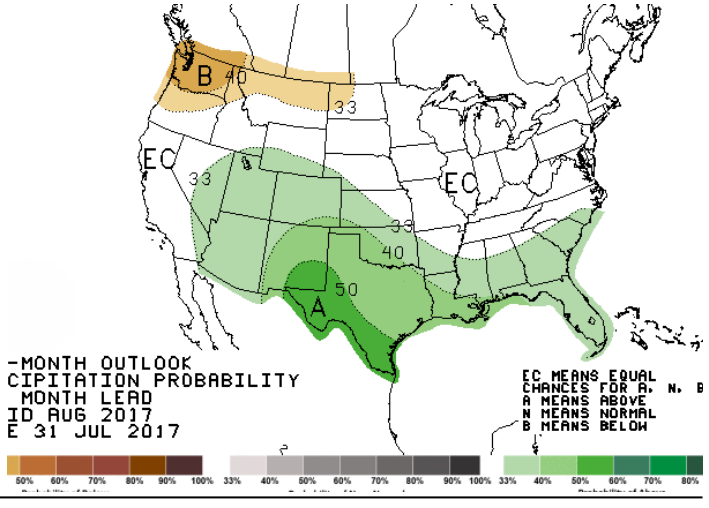
**Precipitation**



**WEATHER — 30 DAY OUTLOOK — NOAA**  
Temperature



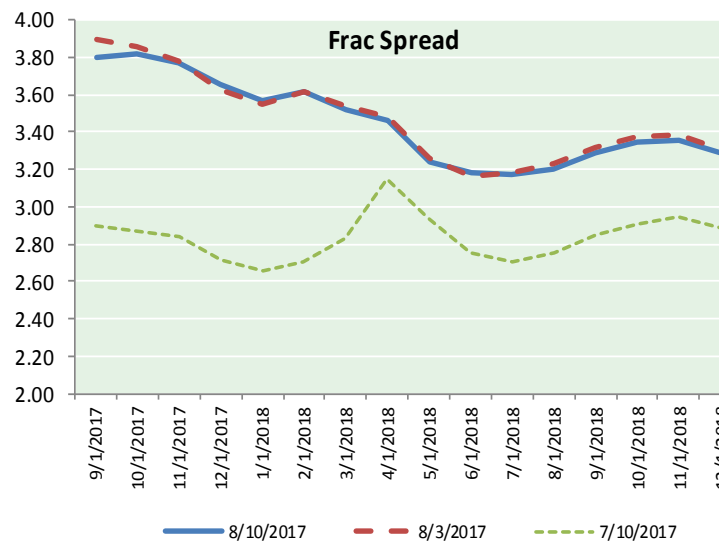
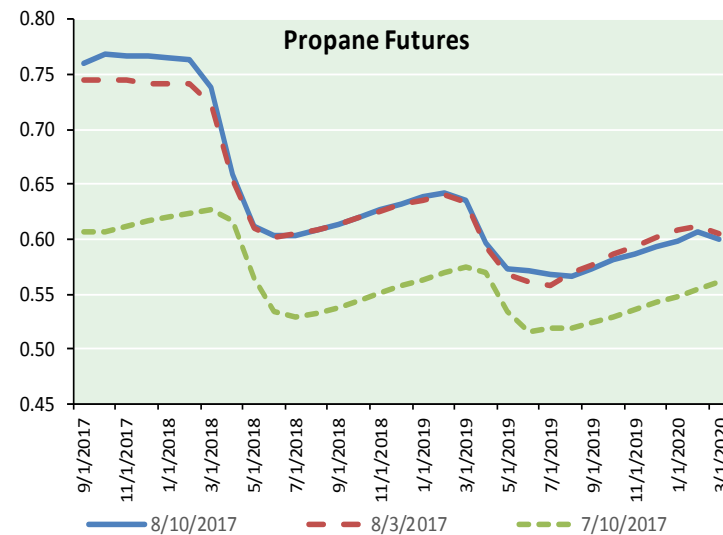
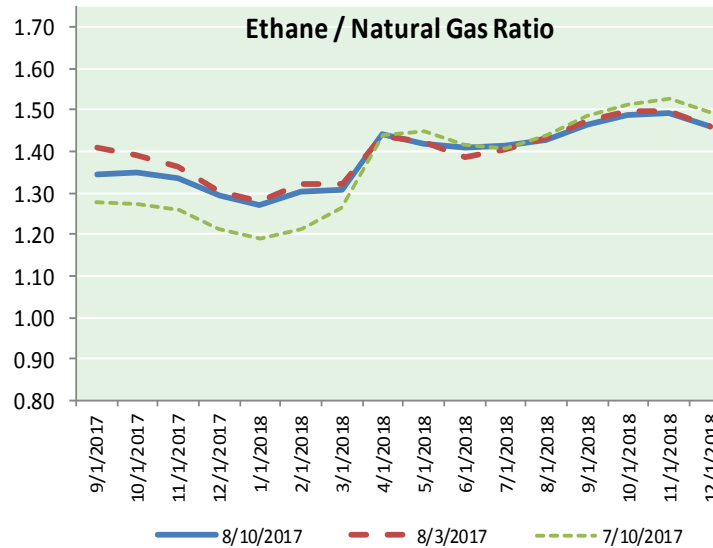
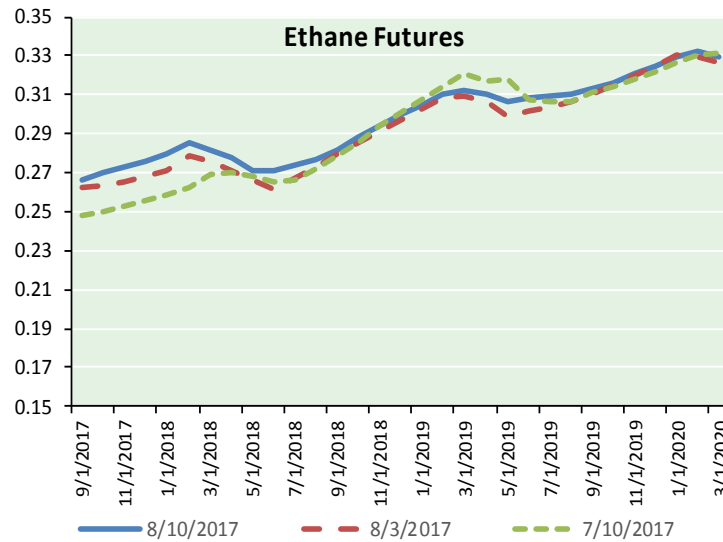
**Precipitation**



# NATURAL GAS NEWS



## ETHANE FUTURES, NG/ETHANE RATIO, PROPANE FUTURES, AND THE FRAC SPREAD



### CME Future Prices

#### Ethane (C2)

##### Non-LDH— Mont Belvieu

Month	Close	Change
Sep-17	0.267	0.005
Oct-17	0.270	0.006
Nov-17	0.273	0.007
Dec-17	0.276	0.007
Jan-18	0.280	0.008
Feb-18	0.285	0.007
Mar-18	0.282	0.005
Apr-18	0.278	0.005
May-18	0.271	0.006
Jun-18	0.271	0.006
Jul-18	0.274	0.003
Aug-18	0.277	0.004

1YR Strip 0.275 0.006

### CME Future Prices

#### Propane (C3)

##### Non-LDH— Mont Belvieu

Month	Close	Change
Sep-17	0.761	0.007
Oct-17	0.769	0.011
Nov-17	0.768	0.010
Dec-17	0.766	0.010
Jan-18	0.765	0.010
Feb-18	0.764	0.010
Mar-18	0.738	0.009
Apr-18	0.659	0.004
May-18	0.613	0.002
Jun-18	0.604	0.002
Jul-18	0.604	0.002
Aug-18	0.608	0.002

1YR Strip 0.701 0.006

# NATURAL GAS NEWS



**Prompt WTI (CL) Crude**  
Daily Sentiment

**BEARISH**



RESISTANCE  
49.76 & 50.92  
SUPPORT  
47.89 & 47.18

FOLLOW US ON TWITTER:



@MPG\_NatGasNews

**NYMEX Brent (BZ)**

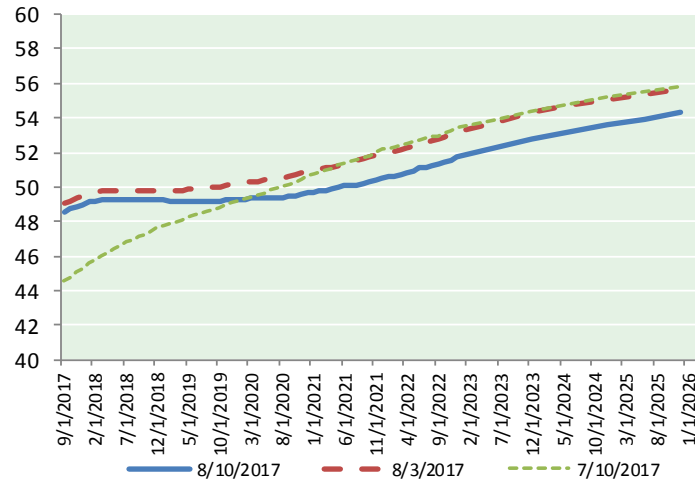
**Futures**

Month	Close	Change
Oct-17	51.90	(0.80)
Nov-17	51.78	(0.87)
Dec-17	51.77	(0.93)
Jan-18	51.82	(0.96)
Feb-18	51.88	(1.00)
Mar-18	51.93	(1.02)
Apr-18	51.97	(1.03)
May-18	52.02	(1.03)
Jun-18	52.07	(1.02)
Jul-18	52.13	(1.01)
Aug-18	52.16	(1.01)
Sep-18	52.17	(1.01)
Oct-18	52.17	(1.02)
Nov-18	52.18	(1.02)
Dec-18	52.19	(1.03)
Jan-19	52.22	(1.03)
Feb-19	52.27	(1.03)
Mar-19	52.31	(1.03)
Apr-19	52.38	(1.02)
May-19	52.39	(1.03)
Jun-19	52.38	(1.03)
Jul-19	52.44	(1.03)
Aug-19	52.47	(1.04)
Sep-19	52.51	(1.05)
1YR Strip 2017	51.97	(0.97)
5YR Strip	53.06	(1.05)

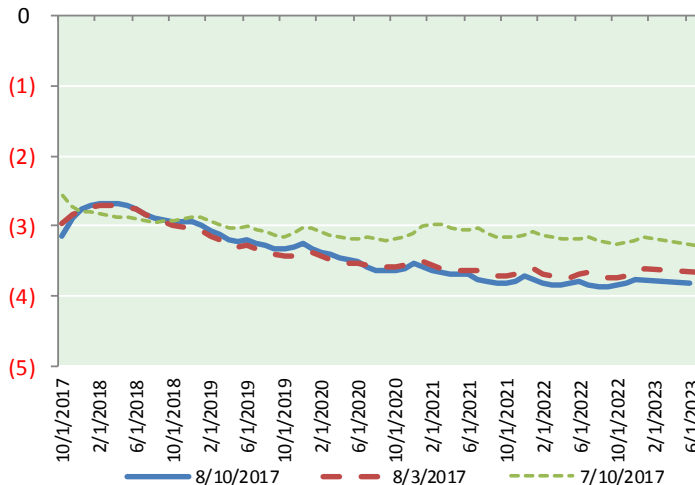
**BRENT CRUDE FORWARD CURVE**



**WTI CRUDE FORWARD CURVE**



**WTI-BRENT SPREAD**



**FRAC Spread**

**Specifications**

Ethane :	42%	66,500 btu/g
Propane :	28%	90,830 btu/g
Butane :	11%	102,916 btu/g
Iso-Butane :	6%	98,935 btu/g
Natural Gasoline :	13%	115,021 btu/g

**Prompt NGL Futures**

(\$/gallon)

	Sep-17	Close	Change
Butane	0.893	0.009	
Iso-Butane	0.911	0.006	
Nat Gasoline	1.102	(0.014)	

**NYMEX WTI (CL) Futures**

Month	Close	Change
Sep-17	48.59	(0.97)
Oct-17	48.75	(0.97)
Nov-17	48.88	(0.99)
Dec-17	49.00	(1.01)
Jan-18	49.12	(1.04)
Feb-18	49.20	(1.06)
Mar-18	49.25	(1.08)
Apr-18	49.28	(1.09)
May-18	49.30	(1.08)
Jun-18	49.30	(1.06)
Jul-18	49.28	(1.05)
Aug-18	49.26	(1.03)
Sep-18	49.25	(1.01)
Oct-18	49.24	(1.00)
Nov-18	49.24	(0.98)
Dec-18	49.25	(0.98)
Jan-19	49.22	(0.98)
Feb-19	49.19	(0.98)
Mar-19	49.18	(0.98)
Apr-19	49.18	(0.98)
May-19	49.17	(0.99)
Jun-19	49.19	(1.00)
Jul-19	49.18	(1.00)
Aug-19	49.18	(1.01)
1YR Strip 2017	49.10	(1.04)
5YR Strip	49.64	(1.06)