

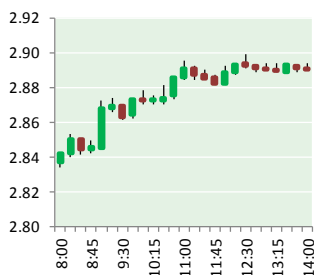
NATURAL GAS



NEWS

AUGUST 10, 2017

Prior Day's NYMEX Sep-17 Contract (CT)



NYMEX NG Futures

Month	Close	Change
Sep-17	2.883	0.061
Oct-17	2.920	0.060
Nov-17	2.993	0.052
Dec-17	3.137	0.048
Jan-18	3.237	0.049
Feb-18	3.228	0.047
Mar-18	3.184	0.044
Apr-18	2.869	0.019
May-18	2.844	0.015
Jun-18	2.869	0.014
Jul-18	2.895	0.013
Aug-18	2.899	0.012
Sep-18	2.875	0.009
Oct-18	2.894	0.008
Nov-18	2.944	0.007
Dec-18	3.073	0.004
Jan-19	3.157	0.003
Feb-19	3.133	0.002
Mar-19	3.068	(0.001)
Apr-19	2.718	(0.006)
May-19	2.687	(0.007)
Jun-19	2.707	(0.009)
Jul-19	2.729	(0.010)
Aug-19	2.737	(0.012)
1YR Strip	2.997	0.036
2017	2.983	0.055
5YR Strip	2.859	0.002

IN THE NEWS

Trump's 'Fire And Fury' Remarks Disquiet Markets; Bump Oil, Gas— E&P reports: President Donald J. Trump's threats to meet North Korea's hostile acts or comments with "fire, fury and, frankly, power" shook global markets but crude opened higher — only to sell off on what were perceived to be bullish stats. Crude

- **Trump's 'Fire And Fury' Remarks Disquiet Markets; Bump Oil, Gas**
- **Sunoco Reaches Settlement on Natural Gas Pipeline**

oil and natural gas were slightly higher prior to the official market open. Crude was bolstered overnight by bullish API stocks and the ratcheting up of geopolitical risk with choice rhetoric between Trump and the North Korean leader Kim Jong Un, KeyBank said. For more on this story visit epmag.com or click the following link <http://bit.ly/2uruyvmf>

Sunoco Reaches Settlement on Natural Gas Pipeline— US News and World Report reports: State officials, environmental groups and the owners of a natural gas pipeline in Pennsylvania reached an agreement to allow drilling to continue while providing protections to the public. In the settlement released Tuesday, Sunoco agreed to re-evaluate 47 high-risk sites associated with the Mariner East 2 pipeline. The drilling plans for those sites will then be submitted to the Pennsylvania Department of Environmental Protection for approval. The agreement comes a day before a scheduled hearing before the state's Environmental Hearing Board on a petition to halt all Sunoco Pipeline drilling. Judge Bernard Labuskas Jr. kept a temporary ban on 39 drilling operations until the board reviews the settlement. The planned \$2.5 billion pipeline will carry propane, butane and ethane from the Marcellus Shale natural gas formation to an export terminal near Philadelphia. Sunoco declined to comment on the settlement. For more on this story visit usnews.com or click <http://bit.ly/2uJmIjm>

12 MONTH CANDLESTICK (WEEKLY)



Prompt Natural Gas (NG) Daily Sentiment

BULLISH



RESISTANCE
2.92 & 2.96

SUPPORT
2.82 & 2.76

Trading Summary

NATURAL GAS

Futures	Close	Change
NG	2.883	0.061
Volume	360,247	21,573
Open Int.	1,339,219	(2,773)

CRUDE AND GASOLINE

Futures	Close	Change
Crude	49.56	0.39
RBOB	1.6200	(0.0008)
Crude/NG	17.19	(0.23)

METALS

Futures	Close	Change
Gold	1,273.00	3.40

EQUITIES

Exchange	Close	Change
DOW	22,048.70	(36.64)
S&P 500	2,294.62	(180.30)

CURRENCY

Currency	Close	Change
EUR/USD	1.1778	(0.0043)
USD/CND	1.2696	(0.0002)

Contact Us



Mansfield Energy Corp
1025 Airport Pkwy
Gainesville, GA 30501

www.mansfield.energy
info@mansfieldoil.com

Phone: (800) 695-6626

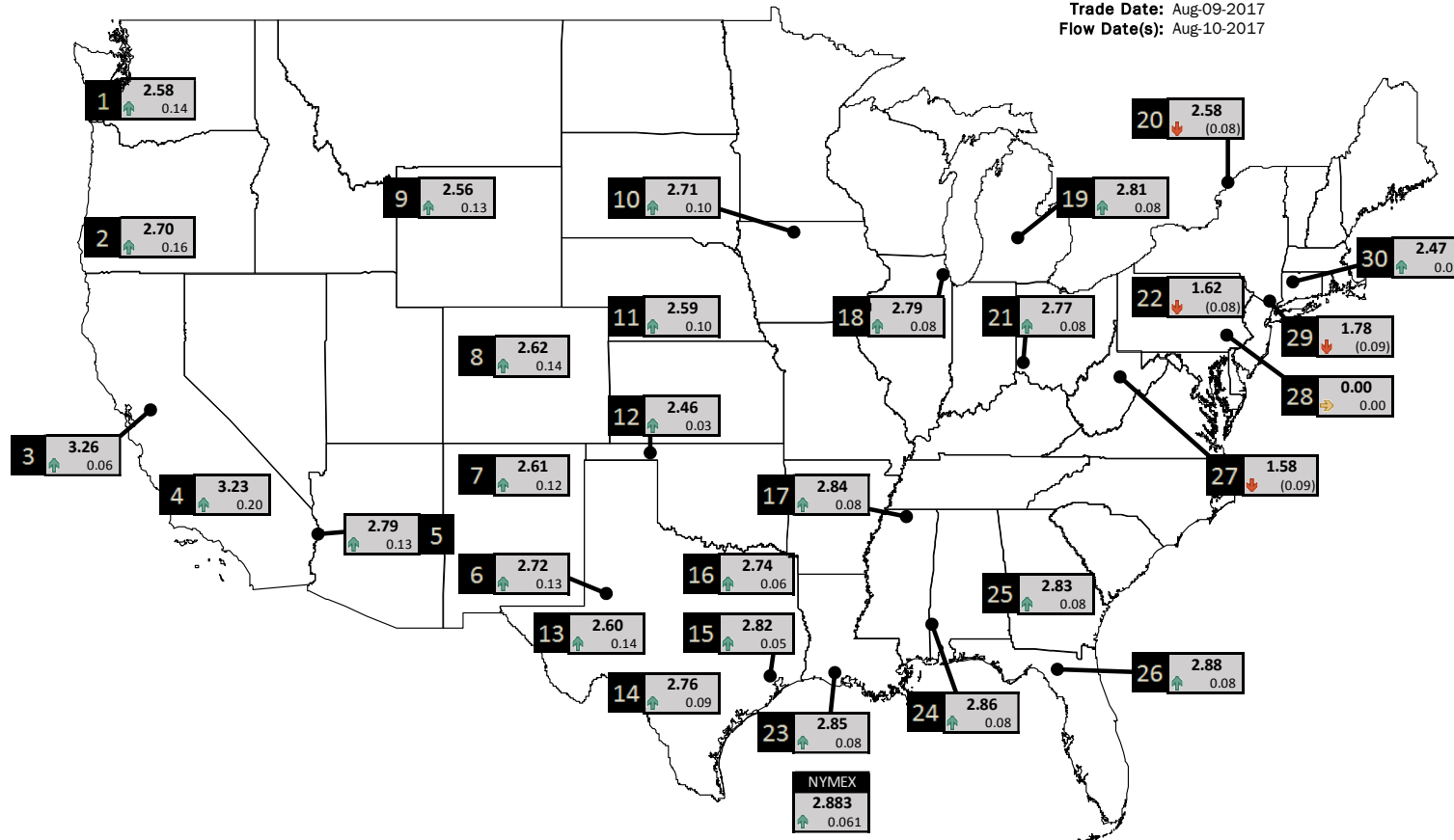




NATURAL GAS NEWS

PHYSICAL SPOT NATURAL GAS PRICE MAP

Trade Date: Aug-09-2017
Flow Date(s): Aug-10-2017



ID	DAILY INDEX	PRICE	CHANGE
1	Stanfield	2.58	0.14
2	Malin	2.70	0.16
3	PG&E - Citygate	3.26	0.06
4	SoCal-Citygate	3.23	0.20
5	SoCal Border	2.79	0.13
6	Waha	2.72	0.13
7	EPSJ Blanco Pool	2.61	0.12
8	Opal Plant Tailgate	2.62	0.14
9	NWP-Wyoming	2.56	0.13
10	Ventura	2.71	0.10

ID	DAILY INDEX	PRICE	CHANGE
11	NGPL-Midcont Pool	2.59	0.10
12	Panhandle	2.46	0.03
13	EP-Permian	2.60	0.14
14	TGP-ZO	2.76	0.09
15	Houston Ship Channel	2.82	0.05
16	NGPL-TXOK	2.74	0.06
17	TETCO-M1 30	2.84	0.08
18	Chicago Citygates	2.79	0.08
19	Michcon	2.81	0.08
20	Iroquois (into)	2.58	(0.08)

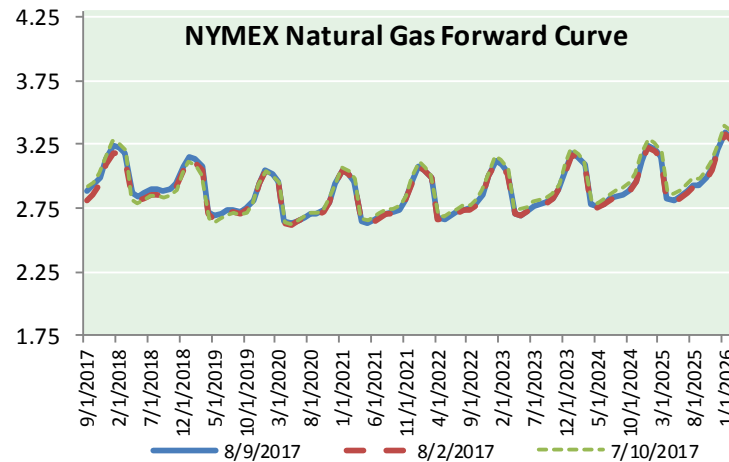
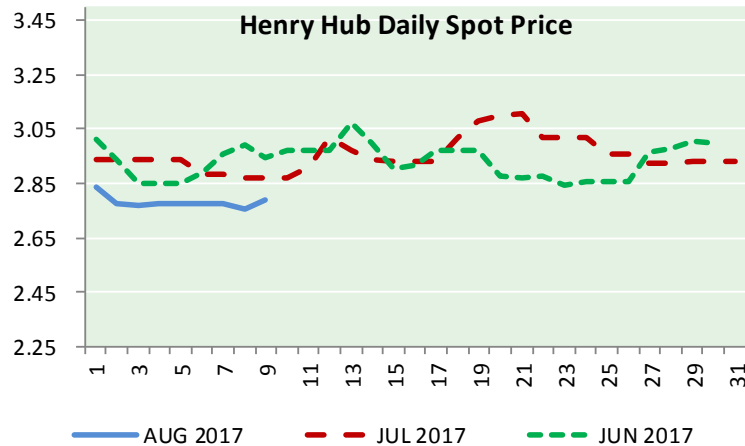
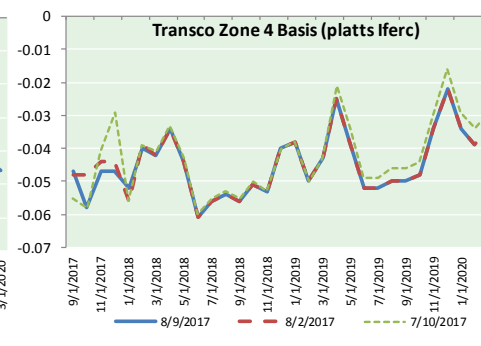
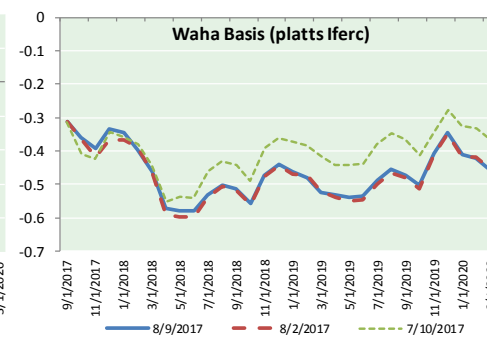
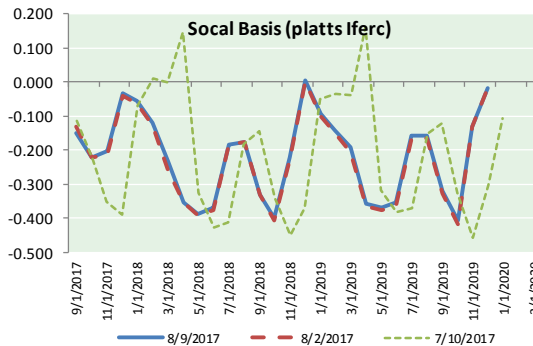
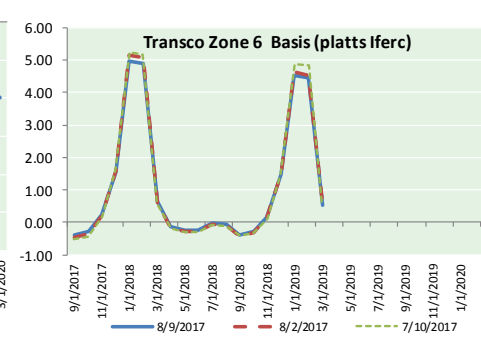
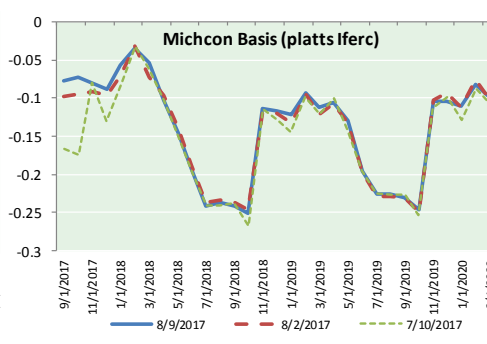
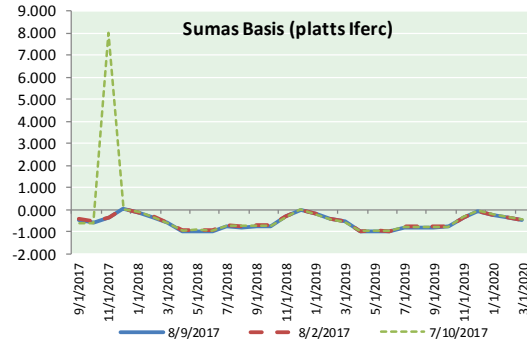
ID	DAILY INDEX	PRICE	CHANGE
21	REX E-ANR	2.77	0.08
22	Leidy-Transco	1.62	(0.08)
23	Henry	2.85	0.08
24	Transco-85	2.86	0.08
25	Sonat-ZO South	2.83	0.08
26	FGT-Z3	2.88	0.08
27	Dominion-South	1.58	(0.09)
28	Transco-Z6 (non-NY)	0.00	0.00
29	Transco-Z6 (NY)	1.78	(0.09)
30	Iroquois-Z2	2.47	0.01

DISCLAIMER: The content herein is privileged and confidential. Content is presented for informational purposes and is a reflection of the market opinions of its authors subject to change without notice. Content is derived from sources believed to be accurate at the time of release but carries no guarantee of accuracy or completeness. Mansfield Energy Corp and its clients may or may not take positions similar or opposite those discussed herein. The reader should realize that the trading of commodities involves risk, and the reader assumes all responsibility for the risk of financial losses.





NATURAL GAS BASIS FUTURES, HENRY HUB SPOT PRICES, AND FORWARD CURVE



CME NG Option Prices

ATM Call

Month	Strike	Close	Imp Vol
Sep-17	2.900	0.067	30.0
Oct-17	2.900	0.134	30.0
Nov-17	3.000	0.169	31.9
Dec-17	3.150	0.218	32.8
Jan-18	3.250	0.285	36.6
Feb-18			
Mar-18			
Apr-18			
May-18			
Jun-18			
Jul-18			
Aug-18			
Sep-18			
Oct-18			
Nov-18			
Dec-18			
Jan-19			

CME NG Option Prices

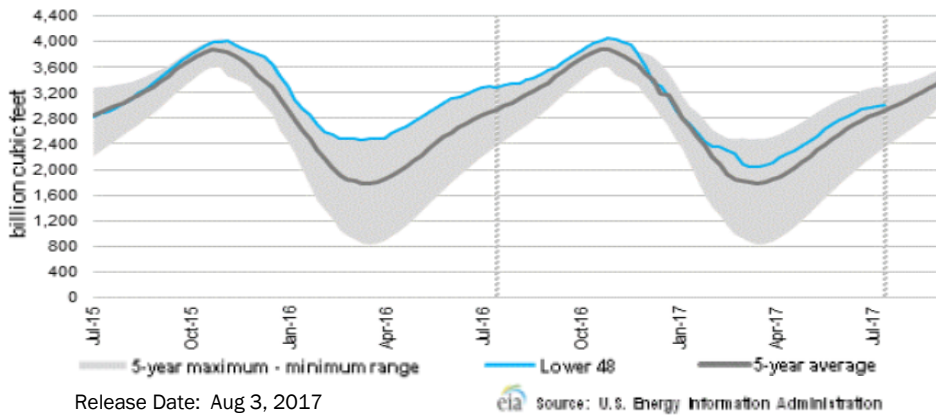
ATM Put

Month	Strike	Close	Imp Vol
Sep-17	2.900	0.079	26.2
Oct-17	2.900	0.114	29.0
Nov-17	3.000	0.173	30.0
Dec-17	3.150	0.228	31.9
Jan-18	3.250	0.300	36.6
Feb-18			
Mar-18			
Apr-18			
May-18			
Jun-18			
Jul-18			
Aug-18			
Sep-18			
Oct-18			
Nov-18			
Dec-18			
Jan-19			



NATURAL GAS NEWS

WEEKLY GAS IN UNDERGROUND STORAGE WITH 5-YR RANGE



Rig Count

Report Date: August 4, 2017

	Total	Change
US -	954	(4)
CN -	217	(3)

EIA Storage History for 32nd Week of Year (Due to Report Aug 10)

Year	Week Ending	BCF
2013	Aug 09, 2013	+67
2014	Aug 08, 2014	+79
2015	Aug 07, 2015	+65
2016	Aug 05, 2016	+29
ESTIMATE -		+35

Total Working Gas In Storage

3,010 BCF

+20 BCF (LAST WEEK)
 (279) BCF (LAST YEAR)
 +87 BCF (5-YR AVG)

U.S. Natural Gas Supply Gas Week 7/27 - 8/2

Average daily values (BCF/D):
Last Year (BCF/d)
 Dry Production — +71.9
 Total Supply — +79.0
Last Week (BCF/d)
 Dry Production — +72.7
 Total Supply — +78.8

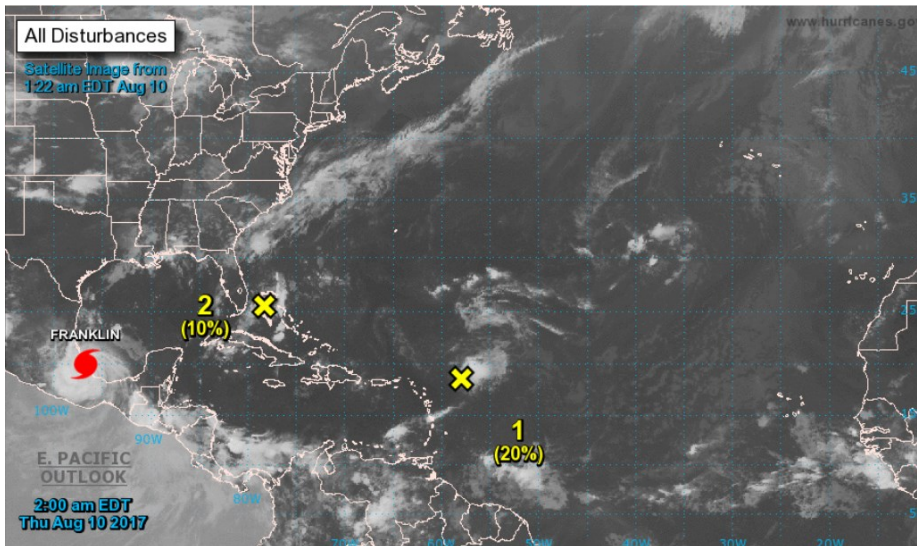
[NEXT REPORT ON AUG 10]

U.S. Natural Gas Demand Gas Week 7/27 - 8/2

Average daily values (BCF/D):
Last Year (BCF/d)
 Power — +37.8
 Total Demand — +76.2
Last Week (BCF/d)
 Power — +37.6
 Total Demand — +74.6

[NEXT REPORT ON AUG 10]

TROPICAL STORM ACTIVITY— ATLANTIC



For the North Atlantic...Caribbean Sea and the Gulf of Mexico:

The National Hurricane Center is issuing advisories on Hurricane Franklin, which has just made landfall in eastern Mexico.

1. Showers and thunderstorms associated with a trough of low pressure located about 250 miles northeast of the northern Leeward Islands remain limited in extent and organization. Some slow development of this system is possible by this weekend while the trough moves northwestward over the western Atlantic.

- * Formation chance through 48 hours...low...20 percent.
- * Formation chance through 5 days...medium...40 percent.

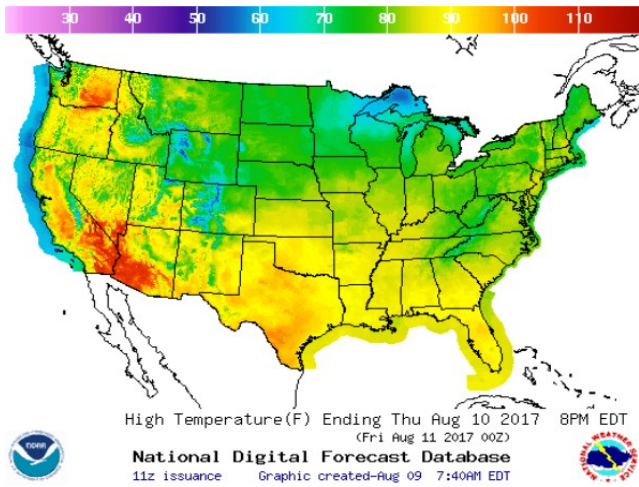
2. A trough of low pressure over the Bahamas and the Florida Straits is producing disorganized shower activity. Although development appears unlikely, this system could bring areas of heavy rain to portions of the Bahamas and Florida during the next day or two.

- * Formation chance through 48 hours...low...10 percent.
- * Formation chance through 5 days...low...10 percent.

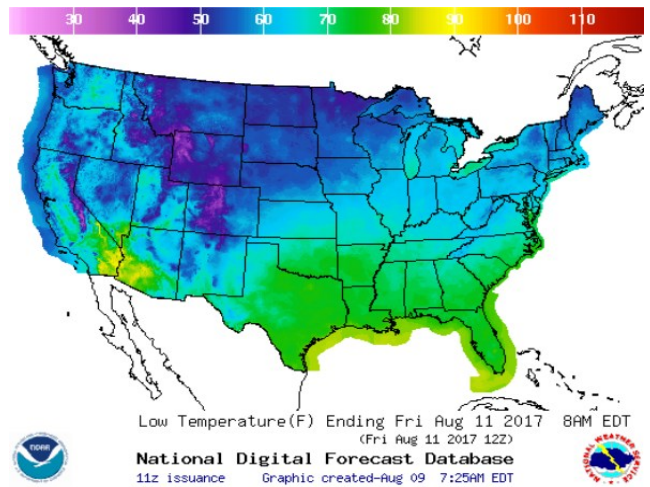
Forecaster Landsea

WEATHER – HIGH / LOW TEMPERATURE TOMORROW

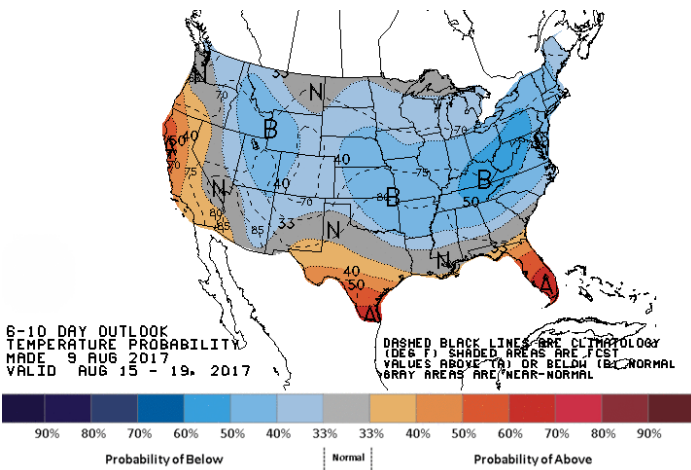
HIGH Temperature



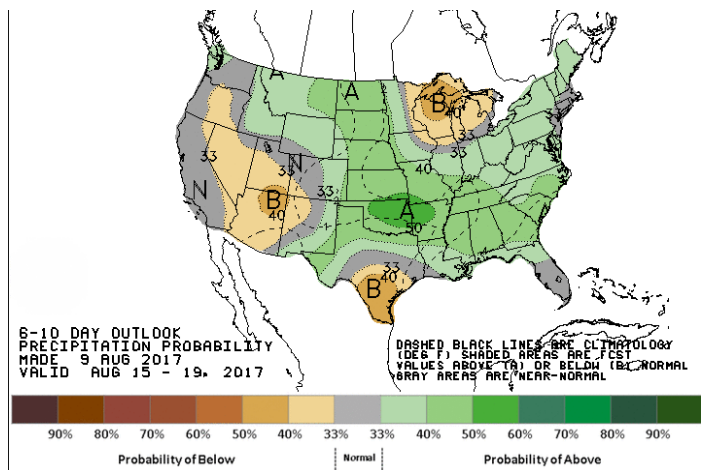
LOW Temperature



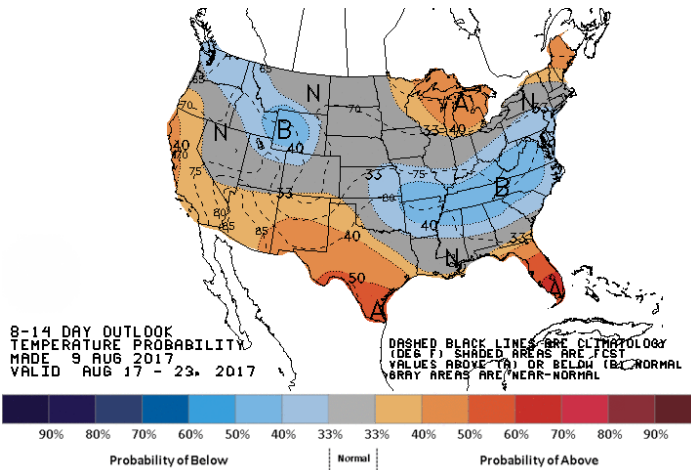
WEATHER – 6 TO 10 DAY OUTLOOK – NOAA
Temperature



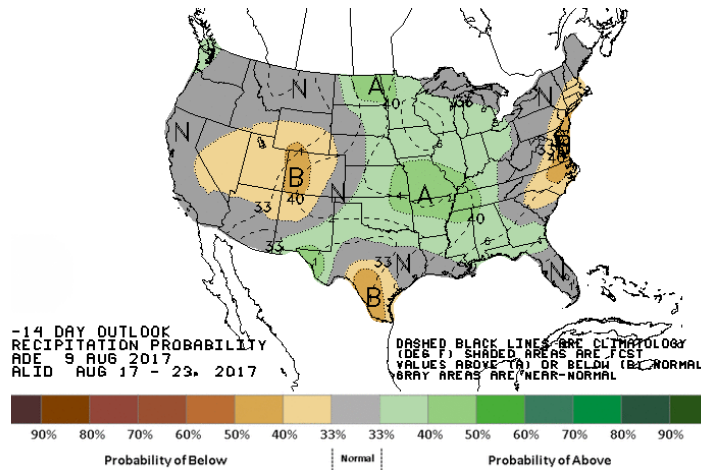
Precipitation



WEATHER – 8 TO 14 DAY OUTLOOK – NOAA
Temperature



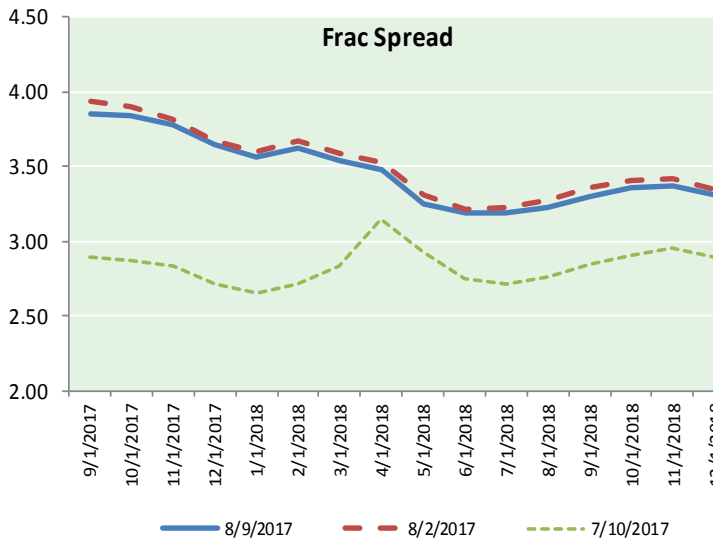
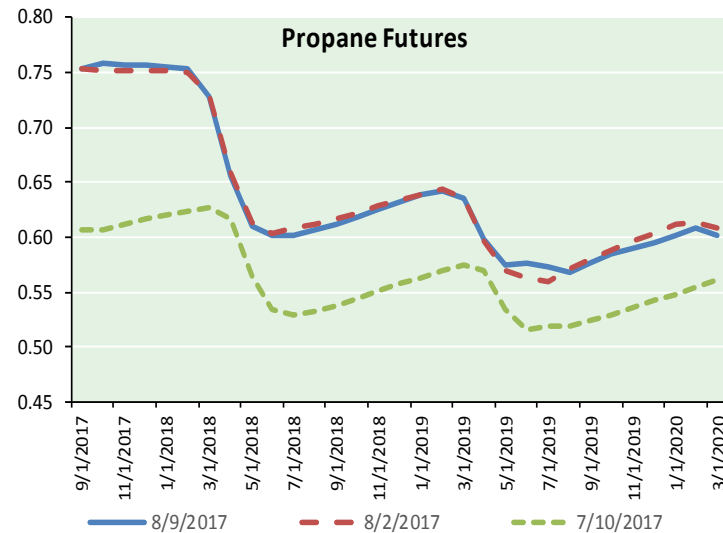
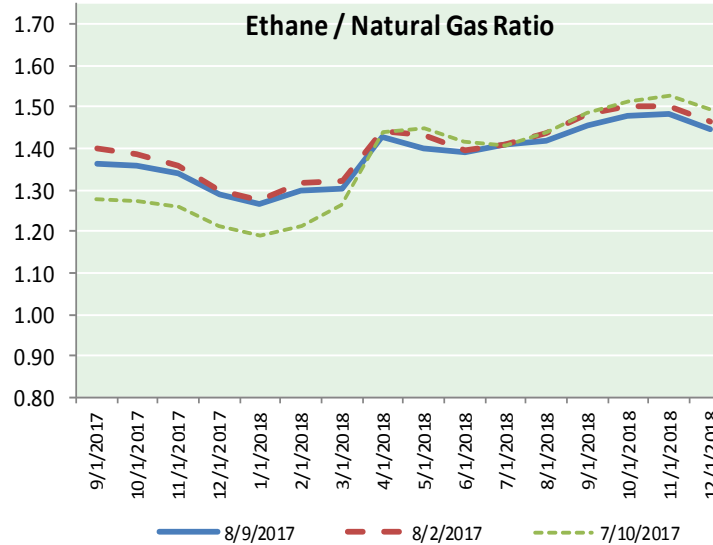
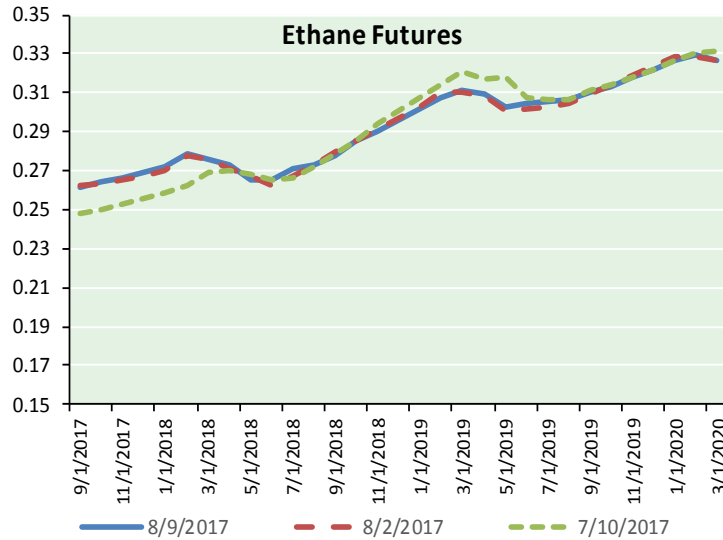
Precipitation



NATURAL GAS NEWS



ETHANE FUTURES, NG/ETHANE RATIO, PROPANE FUTURES, AND THE FRAC SPREAD



CME Future Prices

Ethane (C2)

Non-LDH— Mont Belvieu

Month	Close	Change
Sep-17	0.261	0.005
Oct-17	0.264	0.006
Nov-17	0.267	0.005
Dec-17	0.269	0.004
Jan-18	0.272	0.003
Feb-18	0.278	0.002
Mar-18	0.276	0.003
Apr-18	0.273	0.003
May-18	0.265	0.001
Jun-18	0.265	0.001
Jul-18	0.271	0.003
Aug-18	0.273	0.001

1YR Strip 0.270 0.003

CME Future Prices

Propane (C3)

Non-LDH— Mont Belvieu

Month	Close	Change
Sep-17	0.754	0.027
Oct-17	0.759	0.037
Nov-17	0.758	0.035
Dec-17	0.756	0.034
Jan-18	0.755	0.033
Feb-18	0.754	0.031
Mar-18	0.729	0.023
Apr-18	0.655	0.016
May-18	0.611	0.014
Jun-18	0.602	0.015
Jul-18	0.602	0.011
Aug-18	0.606	0.011

1YR Strip 0.695 0.024

NATURAL GAS NEWS



Prompt WTI (CL) Crude
Daily Sentiment

BULLISH



RESISTANCE
49.89 & 50.32
SUPPORT
49.07 & 48.57

FOLLOW US ON TWITTER:



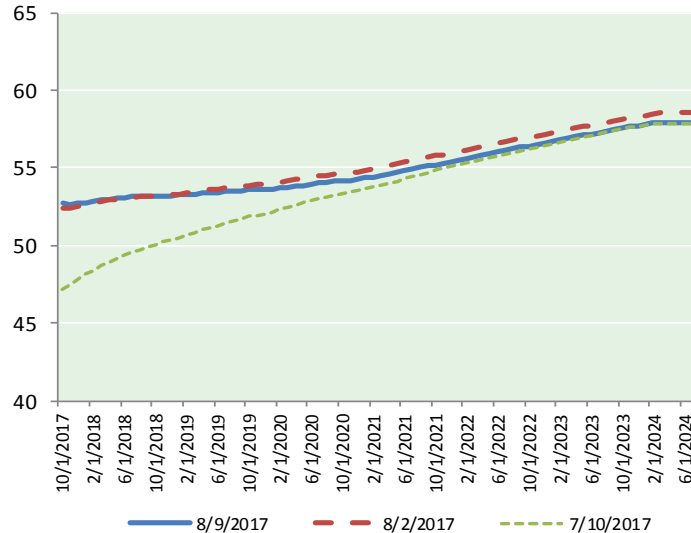
@MPG_NatGasNews

NYMEX Brent (BZ)

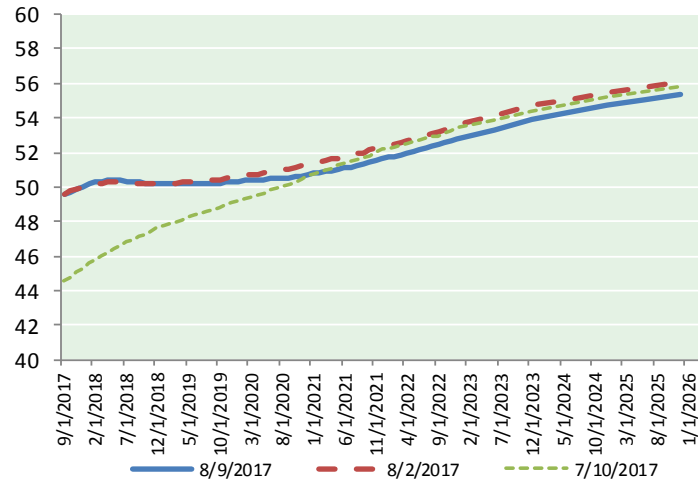
Futures

Month	Close	Change
Oct-17	52.70	0.56
Nov-17	52.65	0.46
Dec-17	52.70	0.36
Jan-18	52.78	0.29
Feb-18	52.88	0.25
Mar-18	52.95	0.22
Apr-18	53.00	0.21
May-18	53.05	0.21
Jun-18	53.09	0.20
Jul-18	53.14	0.19
Aug-18	53.17	0.18
Sep-18	53.18	0.17
Oct-18	53.19	0.16
Nov-18	53.20	0.16
Dec-18	53.22	0.16
Jan-19	53.25	0.15
Feb-19	53.30	0.14
Mar-19	53.34	0.13
Apr-19	53.40	0.11
May-19	53.42	0.10
Jun-19	53.41	0.08
Jul-19	53.47	0.07
Aug-19	53.51	0.05
Sep-19	53.56	0.04
1YR Strip 2017	52.94	0.28
5YR Strip	54.12	(0.01)

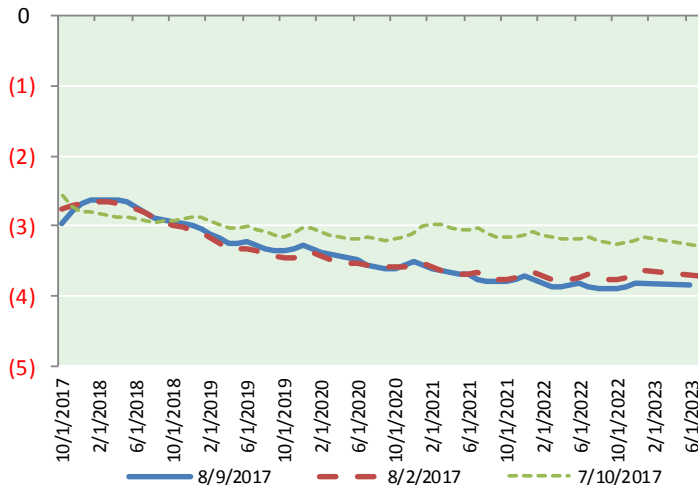
BRENT CRUDE FORWARD CURVE



WTI CRUDE FORWARD CURVE



WTI-BRENT SPREAD



FRAC Spread

Specifications

Ethane : 42%	66,500 btu/g
Propane: 28%	90,830 btu/g
Butane: 11%	102,916 btu/g
Iso-Butane: 6%	98,935 btu/g
Natural Gasoline: 13%	115,021 btu/g

Prompt NGL Futures

(\$/gallon)

	Sep-17	Close	Change
Butane	0.885	0.020	
Iso-Butane	0.904	0.022	
Nat Gasoline	1.116	0.004	

NYMEX WTI (CL) Futures

Month	Close	Change
Sep-17	49.56	0.39
Oct-17	49.72	0.37
Nov-17	49.87	0.35
Dec-17	50.01	0.33
Jan-18	50.16	0.32
Feb-18	50.26	0.31
Mar-18	50.33	0.32
Apr-18	50.37	0.32
May-18	50.38	0.32
Jun-18	50.36	0.31
Jul-18	50.33	0.31
Aug-18	50.29	0.29
Sep-18	50.26	0.28
Oct-18	50.24	0.27
Nov-18	50.22	0.26
Dec-18	50.23	0.25
Jan-19	50.20	0.24
Feb-19	50.17	0.23
Mar-19	50.16	0.22
Apr-19	50.16	0.21
May-19	50.16	0.19
Jun-19	50.19	0.18
Jul-19	50.18	0.16
Aug-19	50.19	0.15
1YR Strip 2017	50.14	0.33
5YR Strip	49.79	0.36
	50.70	0.08