

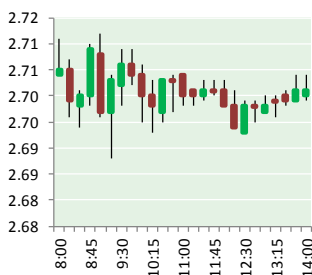
# NATURAL GAS



NEWS

APRIL 9, 2018

## Prior Day's NYMEX May-18 Contract (CT)



## NYMEX NG Futures

Month	Close	Change
May-18	2.701	0.026
Jun-18	2.747	0.018
Jul-18	2.804	0.013
Aug-18	2.825	0.013
Sep-18	2.816	0.013
Oct-18	2.829	0.012
Nov-18	2.876	0.011
Dec-18	3.003	0.012
Jan-19	3.088	0.013
Feb-19	3.053	0.011
Mar-19	2.945	0.010
Apr-19	2.666	(0.001)
May-19	2.637	(0.003)
Jun-19	2.664	(0.004)
Jul-19	2.693	(0.004)
Aug-19	2.697	(0.005)
Sep-19	2.682	(0.007)
Oct-19	2.709	(0.007)
Nov-19	2.765	(0.008)
Dec-19	2.894	(0.009)
Jan-20	2.996	(0.011)
Feb-20	2.974	(0.013)
Mar-20	2.888	(0.013)
Apr-20	2.638	(0.013)
1YR Strip	2.863	0.013
2018	2.825	0.015
5YR Strip	2.819	(0.004)

## IN THE NEWS

Global Compressed Natural Gas Vehicles Market 2018 Outlook-Faw-Volkswagen, Beijing Hyundai, DPCA and Saic-Volkswagen — Technical Progress News reported: The recent Global Compressed Natural Gas Vehicles market research report is a detailed review of Compressed Natural Gas Vehicles industry including

- **Global Compressed Natural Gas Vehicles Market 2018 Outlook-Faw-Volkswagen, Beijing Hyundai, DPCA and Saic-Volkswagen**
- **NYMEX May natural gas futures fall 2.1 cents to \$2.680/MMBtu as demand eases**

integral frameworks. It reveals Compressed Natural Gas Vehicles market drivers, major tendencies, and confrontations. Later examines the Compressed Natural Gas Vehicles deployment models, future guidelines, business strategies and approaches. Focuses on company profiles of Compressed Natural Gas Vehicles market players as well as regulative landscape. It figures out a competitive summary of Compressed Natural Gas Vehicles market forecast period from 2018 to 2022. Global Compressed Natural Gas Vehicles industry report highlights market arbitrariness, revenue and Compressed Natural Gas Vehicles market size. Also emphasize Compressed Natural Gas Vehicles industry contribution, product picture, and stipulations. For more on this story visit [thechemicalprogress.com](http://thechemicalprogress.com) or click <http://bit.ly/2qmgCW6>

NYMEX May natural gas futures fall 2.1 cents to \$2.680/MMBtu as demand eases — Platts reported: NYMEX May natural gas futures declined overnight ahead of Monday's open, as abating weather-related demand support reflected more on the market than did the below-average end-of-withdrawal-season inventory level. Previous estimates from the US Energy Information Administration put working natural gas in storage ending the traditional withdrawal season at 1,356 Bcf on March 31, or 17% below the five-year average. Total working gas stocks already sit at 1,354 Bcf as of the week ended March 30, however, after the EIA detailed a net 29 Bcf withdrawal for the week in review. For more on this story visit [platts.com](http://platts.com) or click <http://bit.ly/2GVP6J3>

## 12 MONTH CANDLESTICK (WEEKLY)



## Prompt Natural Gas (NG) Daily Sentiment

**BEARISH**



RESISTANCE

2.72 & 2.74

SUPPORT

2.68 & 2.66

## Trading Summary

### NATURAL GAS

Futures	Close	Change
NG	2.701	0.026
Volume	424,244	(395,424)
Open Int.	1,490,940	(15,889)

### CRUDE AND GASOLINE

Futures	Close	Change
Crude	62.06	(1.48)
RBOB	1.9547	(0.0269)
Crude/NG	22.98	(0.78)

### METALS

Futures	Close	Change
Gold	1,331.90	(1.30)

### EQUITIES

Exchange	Close	Change
DOW	24,033.36	(389.17)
S&P 500	-100.60	(58.37)

### CURRENCY

Currency	Close	Change
EUR/USD	1.2250	(0.0028)
USD/CND	1.2405	(0.0013)

## Contact Us



**Mansfield Energy Corp**  
1025 Airport Pkwy  
Gainesville, GA 30501

[www.mansfield.energy](http://www.mansfield.energy)

[info@mansfieldoil.com](mailto:info@mansfieldoil.com)

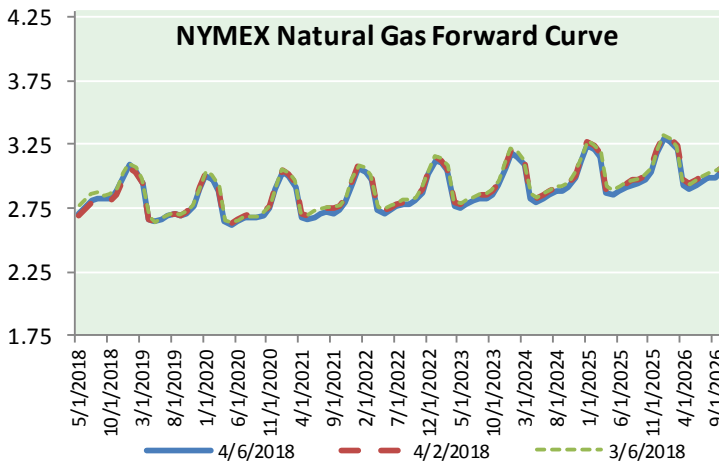
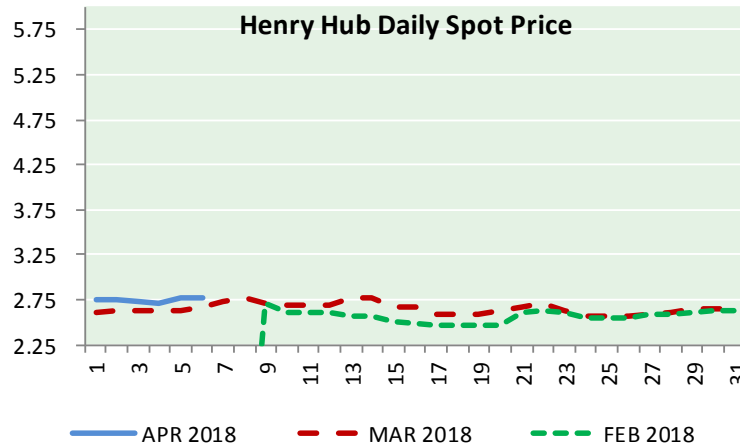
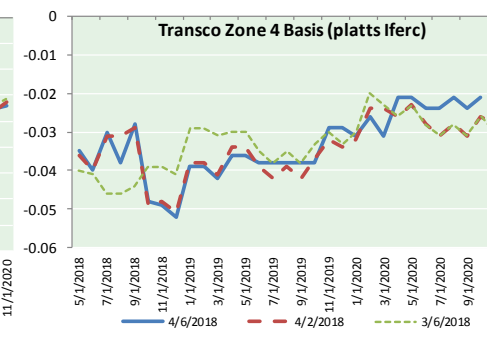
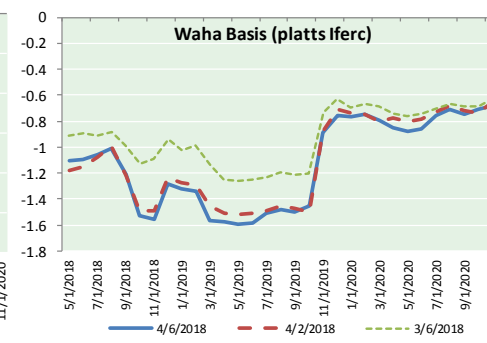
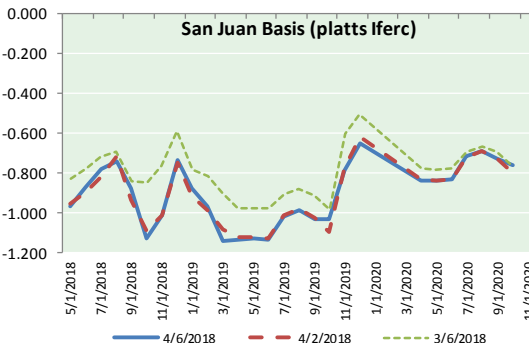
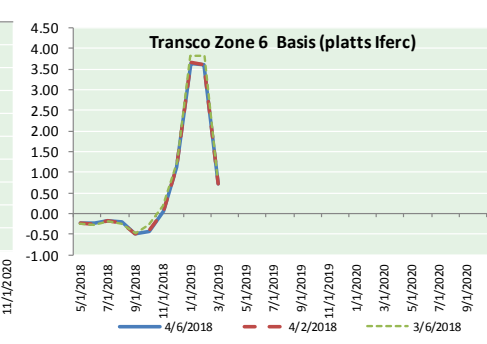
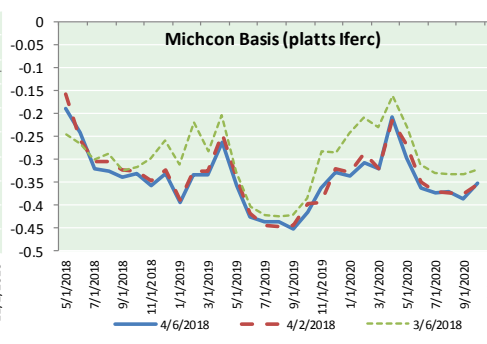
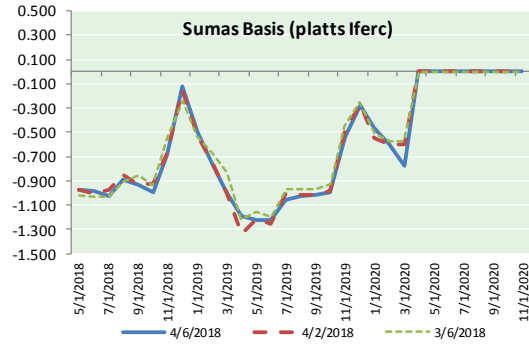
Phone: (800) 695-6626





# NATURAL GAS NEWS

## NATURAL GAS BASIS FUTURES, HENRY HUB SPOT PRICES, AND FORWARD CURVE



### NYMEX WTI Delivery Month Average (\$/bbl) (Excluding Weekends and Holidays)

Month: April 2018

Day	Price	Day	Price
1		16	
2	63.01	17	
3	63.51	18	
4	63.37	19	
5	63.54	20	
6	62.06	21	
7		22	
8		23	
9		24	
10		25	
11		26	
12		27	
13		28	
14		29	
15		30	

Average (Apr) 63.0980  
(through 04/06/2018)  
Average (Mar) 62.7719  
Average (Feb) 62.1837

### CME NG Option Prices

#### ATM Call

Month	Strike	Close	Imp	Vol
Jun-18				
Jul-18	2.700	0.114		26.2
Aug-18				
Sep-18				
Oct-18				

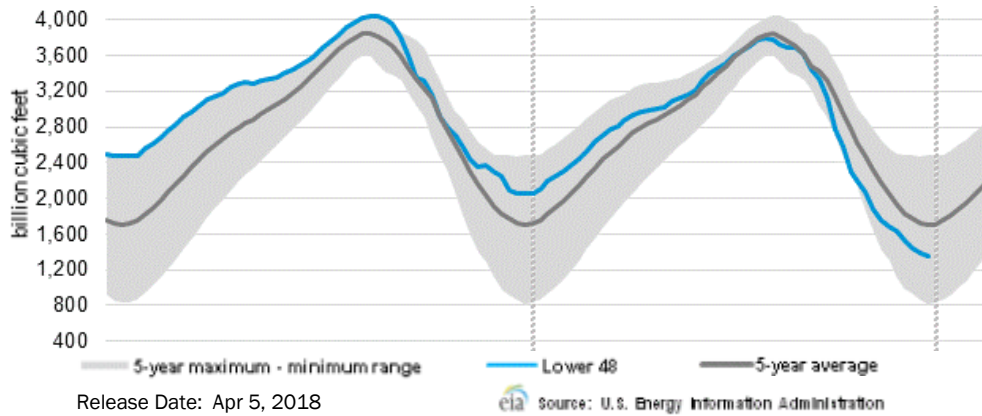
### CME NG Option Prices

#### ATM Put

Month	Strike	Close	Imp	Vol
Jun-18				
Jul-18	2.700	0.061		18.7
Aug-18				
Sep-18				
Oct-18				

# NATURAL GAS NEWS

## WEEKLY GAS IN UNDERGROUND STORAGE WITH 5-YR RANGE



## Rig Count

Report Date: April 6, 2018

	Total	Change
US -	1003	+10
CN -	111	(23)

## EIA Weekly NG Storage Actual and Surveys for March 29, 2018

Released April 5, 2018

Range (5) to (25)

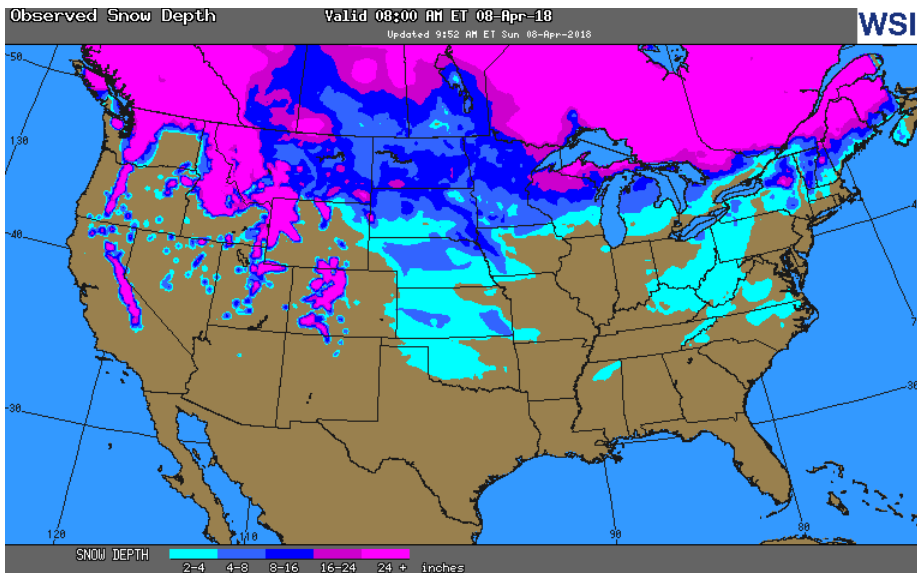
PIRA – (25)

ARM – (26)

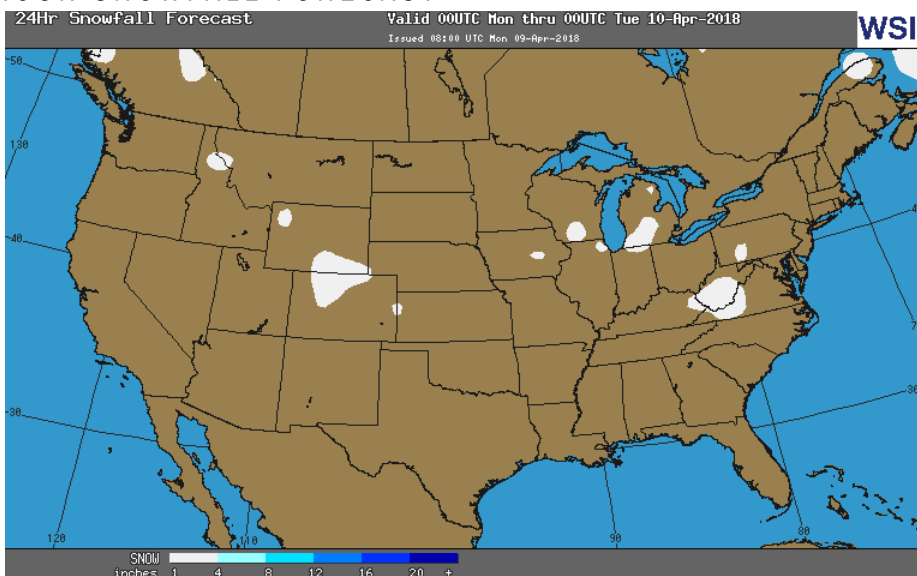
Reuters – (28)

EIA ACTUAL – (29)

## OBSERVED SNOW DEPTH



## 24 HOUR SNOWFALL FORECAST



## Total Working Gas In Storage

**1,354 BCF**

(29) BCF (LAST WEEK)

(697) BCF (LAST YEAR)

(347) BCF (5-YR AVG)

## U.S. Natural Gas Supply Gas Week 3/29– 4/4

Average daily values (BCF/D):

Last Year (BCF/d)

Dry Production – +71.2

Total Supply – +77.0

Last Week (BCF/d)

Dry Production – +79.2

Total Supply – +85.9

[NEXT REPORT ON Apr 12]

## U.S. Natural Gas Demand Gas Week 3/29– 4/4

Average daily values (BCF/D):

Last Year (BCF/d)

Power – +22.4

Total Demand – +75.1

Last Week (BCF/d)

Power – +22.4

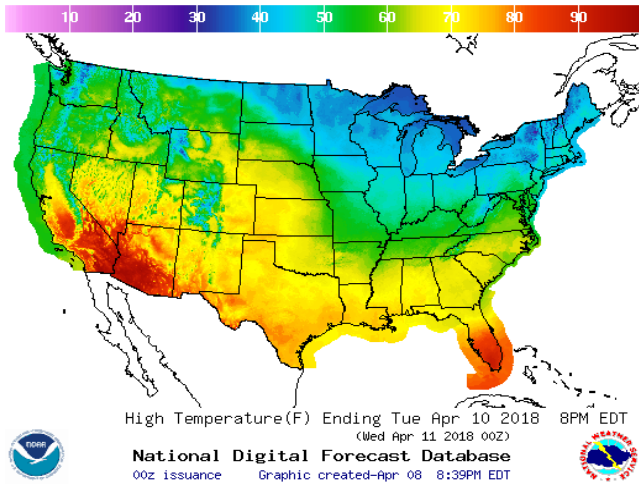
Total Demand – +87.9

[NEXT REPORT ON Apr 12]

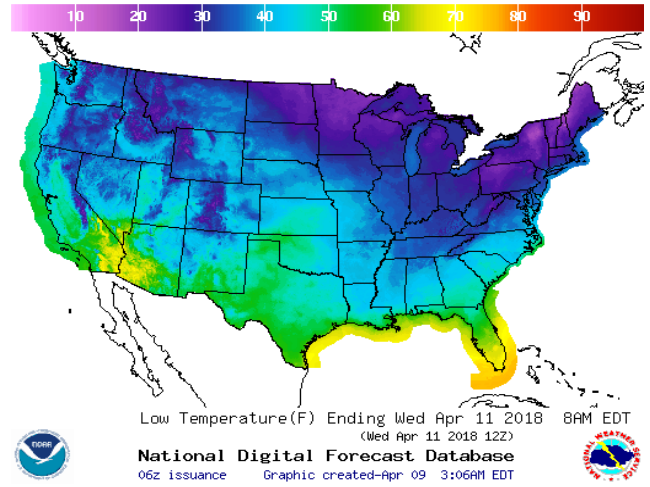


WEATHER – HIGH / LOW TEMPERATURE TOMORROW

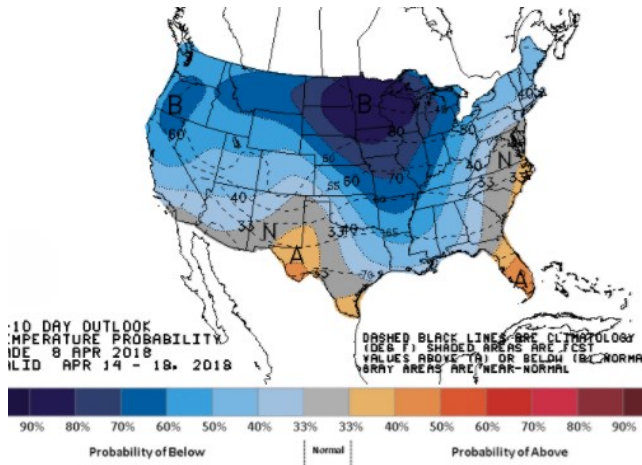
HIGH Temperature



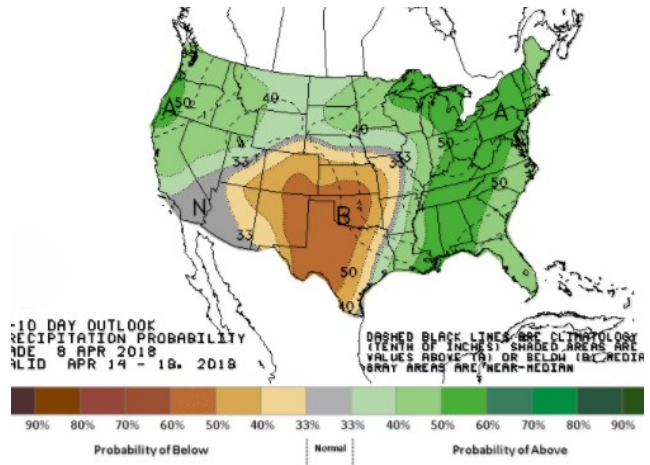
LOW Temperature



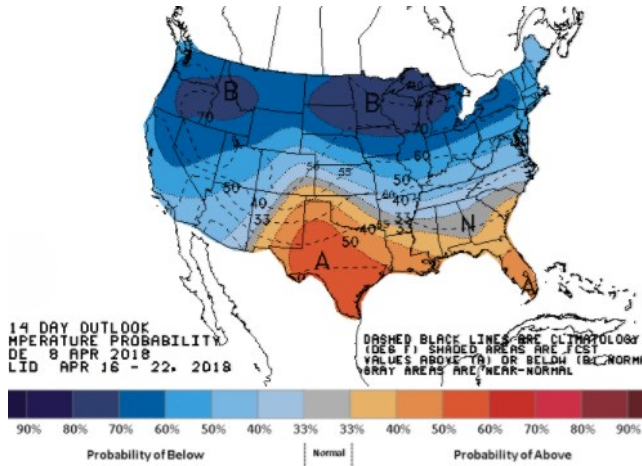
WEATHER – 6 TO 10 DAY OUTLOOK – NOAA  
Temperature



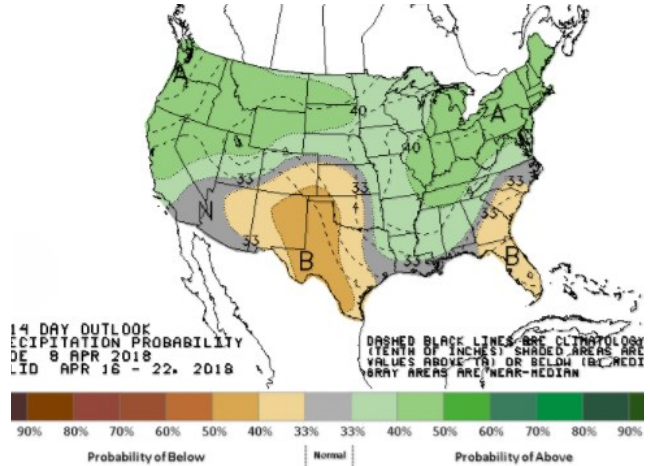
Precipitation



WEATHER – 8 TO 14 DAY OUTLOOK – NOAA  
Temperature

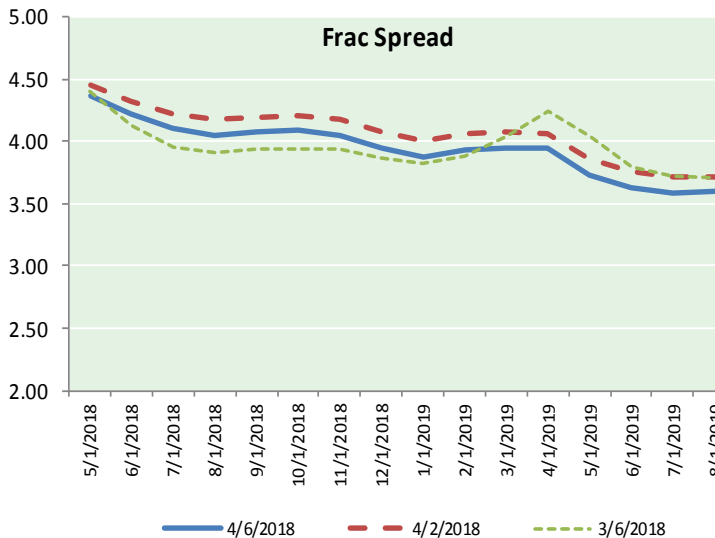
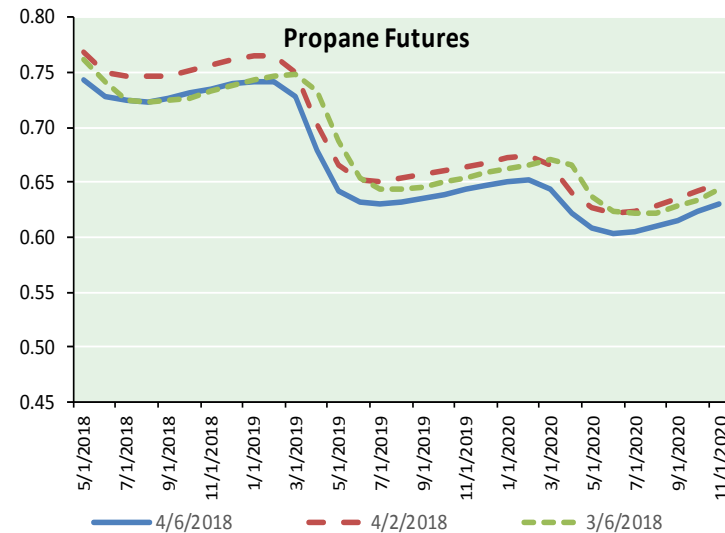
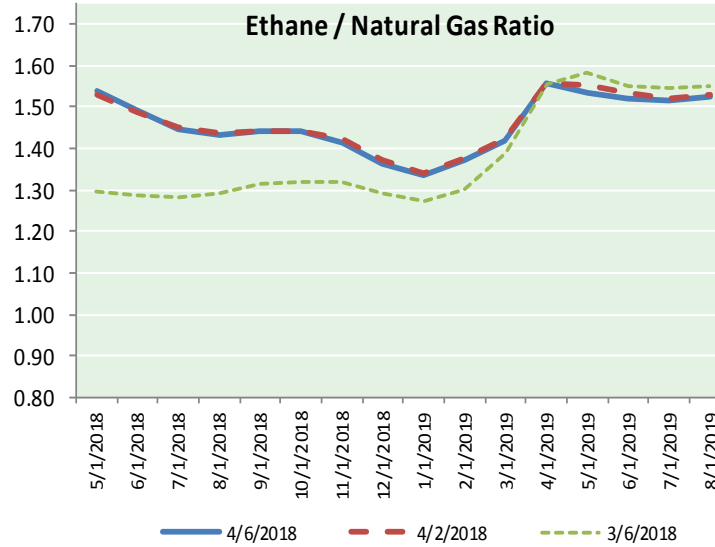
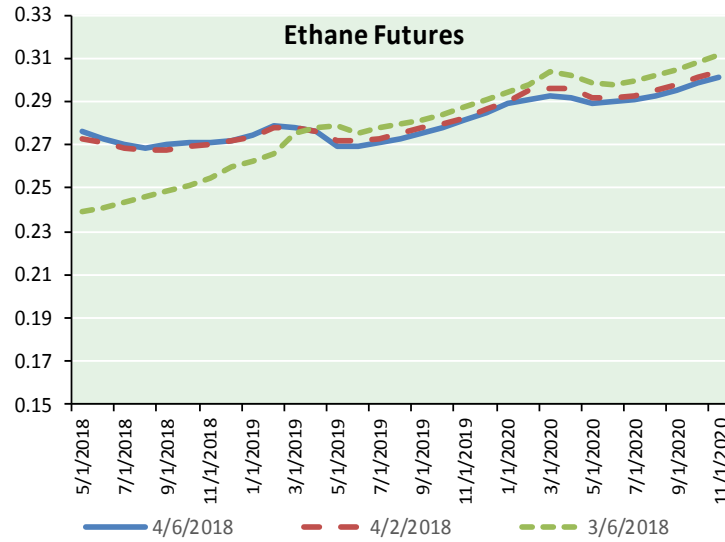


Precipitation





ETHANE FUTURES, NG/ETHANE RATIO, PROPANE FUTURES, AND THE FRAC SPREAD



CME Future Prices

Ethane (C2)

Non-LDH— Mont Belvieu

Month	Close	Change
May-18	0.276	(0.002)
Jun-18	0.273	(0.003)
Jul-18	0.270	(0.004)
Aug-18	0.269	(0.004)
Sep-18	0.270	(0.004)
Oct-18	0.271	(0.004)
Nov-18	0.271	(0.004)
Dec-18	0.272	(0.004)
Jan-19	0.274	(0.004)
Feb-19	0.279	(0.004)
Mar-19	0.278	(0.004)
Apr-19	0.276	(0.003)

1YR Strip 0.273 (0.004)

CME Future Prices

Propane (C3)

Non-LDH— Mont Belvieu

Month	Close	Change
May-18	0.744	(0.003)
Jun-18	0.728	(0.006)
Jul-18	0.724	(0.007)
Aug-18	0.724	(0.007)
Sep-18	0.726	(0.008)
Oct-18	0.732	(0.008)
Nov-18	0.736	(0.007)
Dec-18	0.739	(0.007)
Jan-19	0.743	(0.007)
Feb-19	0.743	(0.007)
Mar-19	0.728	(0.006)
Apr-19	0.680	(0.004)

1YR Strip 0.729 (0.007)

# NATURAL GAS NEWS



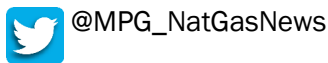
## Prompt WTI (CL) Crude Daily Sentiment

**BULLISH**



RESISTANCE  
63.30 & 64.53  
SUPPORT  
61.32 & 60.57

## FOLLOW US ON TWITTER:

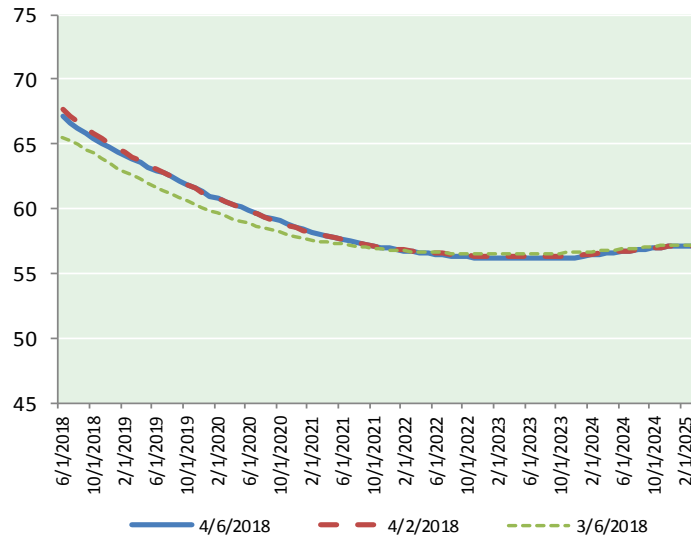


## NYMEX Brent (BZ)

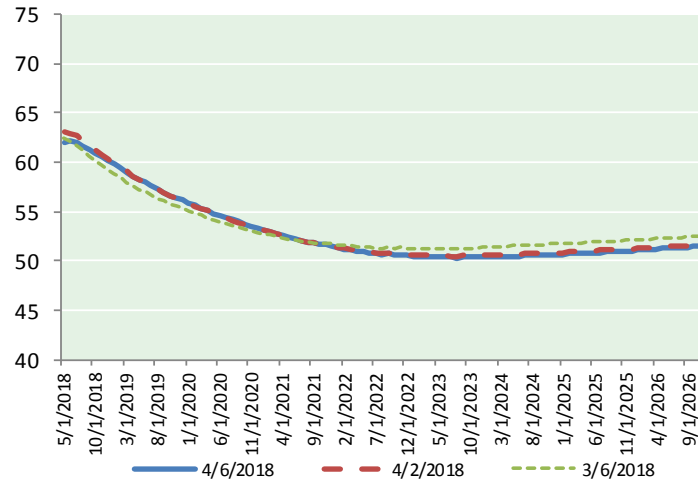
### Futures

Month	Close	Change
Jun-18	67.11	(1.22)
Jul-18	66.68	(1.22)
Aug-18	66.24	(1.21)
Sep-18	65.82	(1.21)
Oct-18	65.44	(1.21)
Nov-18	65.09	(1.21)
Dec-18	64.74	(1.21)
Jan-19	64.42	(1.20)
Feb-19	64.13	(1.18)
Mar-19	63.83	(1.16)
Apr-19	63.54	(1.13)
May-19	63.25	(1.11)
Jun-19	62.97	(1.09)
Jul-19	62.73	(1.08)
Aug-19	62.47	(1.06)
Sep-19	62.18	(1.05)
Oct-19	61.90	(1.04)
Nov-19	61.62	(1.02)
Dec-19	61.28	(1.01)
Jan-20	61.00	(0.99)
Feb-20	60.77	(0.99)
Mar-20	60.54	(0.99)
Apr-20	60.31	(0.97)
May-20	60.11	(0.95)
1YR Strip	65.02	(1.19)
2018	65.87	(1.21)
5YR Strip	59.59	(0.93)

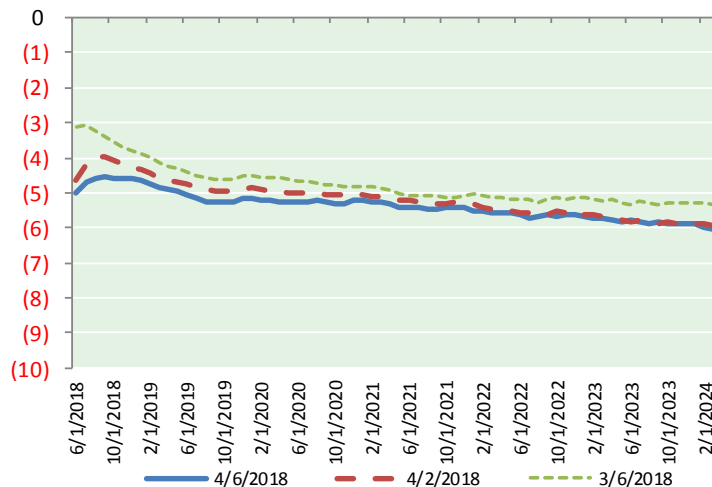
## BRENT CRUDE FORWARD CURVE



## WTI CRUDE FORWARD CURVE



## WTI-BRENT SPREAD



## FRAC Spread

### Specifications

Ethane : 42%	66,500 btu/g
Propane: 28%	90,830 btu/g
Butane: 11%	102,916 btu/g
Iso-Butane: 6%	98,935 btu/g
Natural Gasoline: 13%	115,021 btu/g

## Prompt NGL Futures

(\$/gallon)

	May-18	Close	Change
Butane	0.859	0.010	
Iso-Butane	0.864	0.011	
Nat Gasoline	1.408	(0.013)	

## NYMEX WTI (CL) Futures

Month	Close	Change
May-18	62.06	(1.48)
Jun-18	62.10	(1.44)
Jul-18	61.96	(1.38)
Aug-18	61.64	(1.34)
Sep-18	61.26	(1.30)
Oct-18	60.87	(1.25)
Nov-18	60.50	(1.19)
Dec-18	60.14	(1.15)
Jan-19	59.78	(1.12)
Feb-19	59.38	(1.10)
Mar-19	59.00	(1.08)
Apr-19	58.64	(1.05)
May-19	58.29	(1.04)
Jun-19	57.93	(1.05)
Jul-19	57.58	(1.02)
Aug-19	57.23	(1.02)
Sep-19	56.91	(1.01)
Oct-19	56.62	(0.99)
Nov-19	56.36	(0.98)
Dec-19	56.14	(0.99)
Jan-20	55.85	(0.98)
Feb-20	55.58	(0.97)
Mar-20	55.33	(0.95)
Apr-20	55.07	(0.94)
1YR Strip	60.61	(1.24)
2018	61.32	(1.32)
5YR Strip	54.51	(0.93)