

NATURAL GAS



APRIL 30, 2019

Prior Day's NYMEX MAY-19 Contract (CT)



NYMEX NG Futures

Month	Close	Change
Jun-19	2.593	0.013
Jul-19	2.640	0.010
Aug-19	2.663	0.010
Sep-19	2.656	0.010
Oct-19	2.687	0.010
Nov-19	2.760	0.009
Dec-19	2.912	0.007
Jan-20	2.994	0.007
Feb-20	2.945	0.010
Mar-20	2.828	0.008
Apr-20	2.558	0.007
May-20	2.521	0.008
Jun-20	2.554	0.009
Jul-20	2.590	0.011
Aug-20	2.600	0.013
Sep-20	2.586	0.013
Oct-20	2.609	0.014
Nov-20	2.661	0.014
Dec-20	2.822	0.016
Jan-21	2.929	0.016
Feb-21	2.898	0.020
Mar-21	2.778	0.015
Apr-21	2.525	0.012
May-21	2.493	0.011
1YR Strip 2019	2.730	0.009
5YR Strip	2.702	0.010
	2.706	0.011

IN THE NEWS

Chile lifts coal imports, but limited by rising natural gas supplies—S&P Global reported: Chile's coal imports jumped over 40% in February to over 1.3 million mt, a report from the National Energy Commission showed Monday. Chilean power generators have sharply increased imports of thermal coal to make up for limited hydroelectric supplies in the country's power market. But

- Chile lifts coal imports, but limited by rising natural gas supplies
- Abu Dhabi Weighs Multi-Billion Dollar Gas Pipeline Deal

the fuel appears to be losing ground to natural gas. Chile imported 1.363 million mt of thermal coal in February, the latest month for which data is available, up 42.2% from the month of last year and up almost threefold from the previous month of January, the report showed. The increase in imports follows a rise in demand for coal from Chile's power industry to compensate for the drop in the availability of hydropower following the dry Southern Hemisphere summer. Coal accounted for 37% of electricity sold on Chile's main SEN grid in March, up from 27% five months earlier, while hydropower fell from 47% to 22% over the same period. For more on this story visit spglobal.com or click <https://bit.ly/2WcBTzT>

Abu Dhabi Weighs Multi-Billion Dollar Gas Pipeline Deal—Bloomberg reported: Abu Dhabi National Oil Co. is seeking to raise billions of dollars from its natural-gas pipelines, months after the state-owned explorer got a \$4 billion investment in its oil infrastructure assets, according to people familiar with the matter. Adnoc, as the company is known, is speaking to financial advisers about bringing in international investors for the pipelines, which could help raise \$5 billion or more, one of the people said, asking not to be identified as the matter is private. Adnoc is yet to hire banks for the plans and talks are in the early stages, the people said. The company may structure the investment so bidders lease assets for a period of time, similar to February's oil-infrastructure deal with KKR & Co. and BlackRock Inc., the people said. For more on this story visit bloom.bg/2ZKjMDE

12 MONTH CANDLESTICK (WEEKLY)



Prompt Natural Gas (NG) Daily Sentiment

BEARISH



RESISTANCE

2.61 & 2.63

SUPPORT

2.56 & 2.53

Trading Summary

NATURAL GAS

Futures	Close	Change
NG	2.593	0.013
Volume	194,518	(157,539)
Open Int.	1,231,780	2,621

CRUDE AND GASOLINE

Futures	Close	Change
Crude	63.50	0.20
RBOB	2.0828	(0.0178)
Crude/NG	24.49	(0.05)

METALS

Futures	Close	Change
Gold	1,278.60	2.20

EQUITIES

Exchange	Close	Change
DOW	26,554.39	11.06
S&P 500	-2,621.63	3.15

CURRENCY

Currency	Close	Change
EUR/USD	1.1217	0.0031
USD/CND	1.2405	(0.0009)

Contact Us



Mansfield Energy Corp
1025 Airport Pkwy
Gainesville, GA 30501

www.mansfield.energy

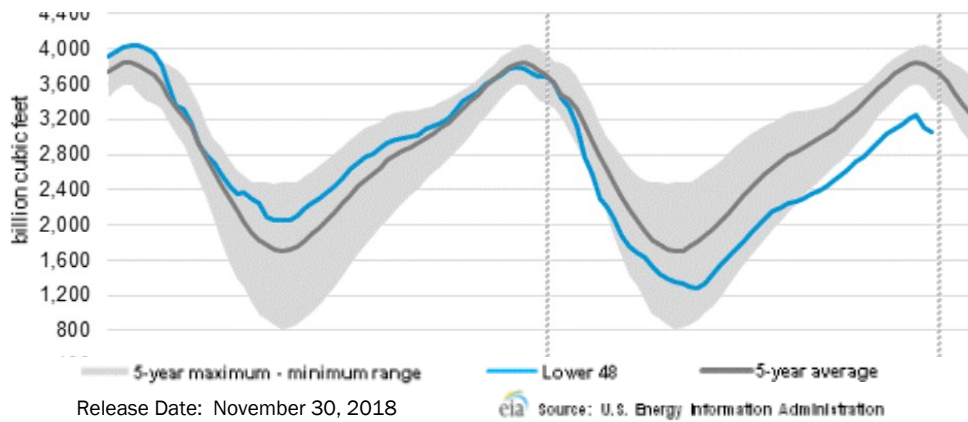
info@mansfieldoil.com

Phone: (800) 695-6626



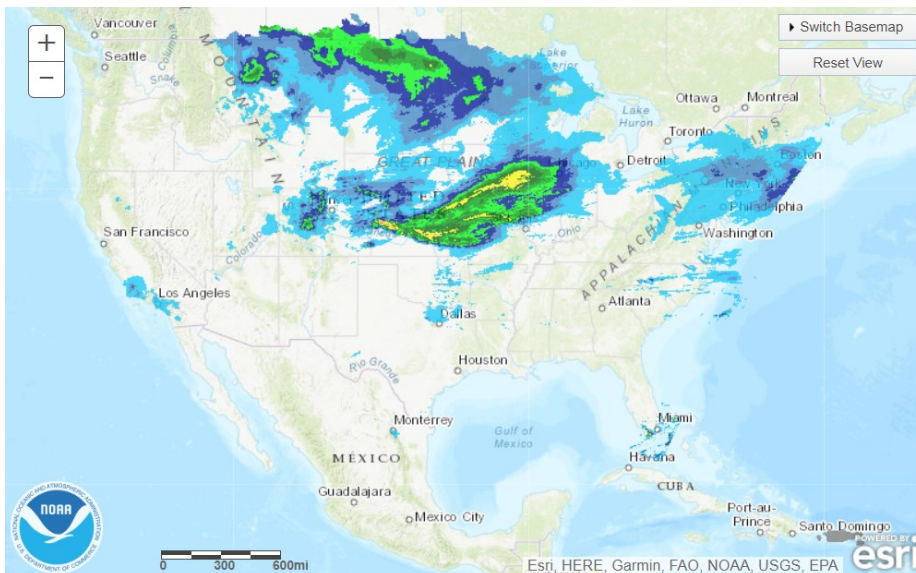
NATURAL GAS NEWS

WEEKLY GAS IN UNDERGROUND STORAGE WITH 5-YR RANGE

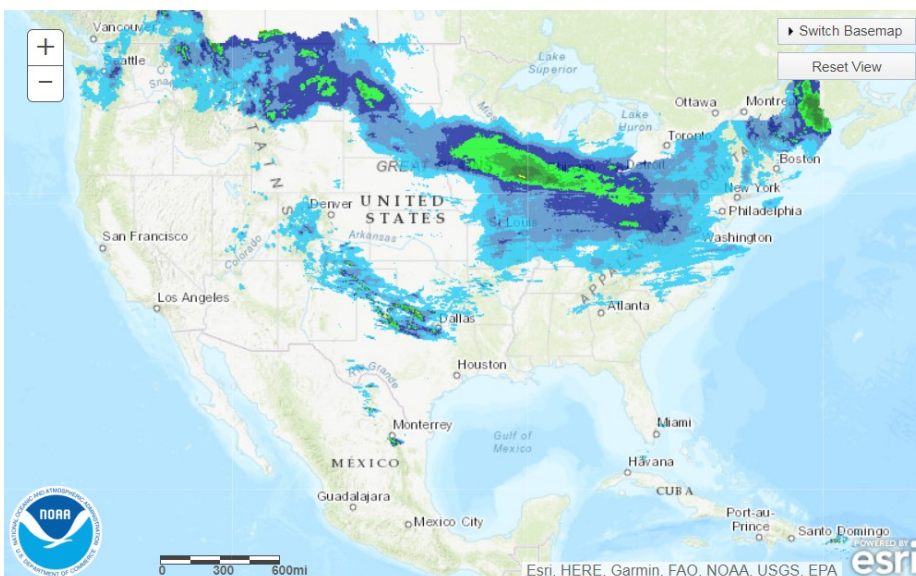


Release Date: November 30, 2018

TODAY'S PRECIPITATION



24 HOUR PRECIPITATION



Rig Count

Report Date: March 22, 2019

	Total	Change
US -	1,016	(22)
CN -	105	(106)

EIA Weekly NG Storage Actual and Surveys for April 25, 2019

Released April 24, 2019

Range +69 to +126

PIRA— (95)

PointLogic — (93)

Citi Futures — (91)

EIA ACTUAL — (92)

Total Working Gas In Storage

1,339 BCF

(92) BCF (LAST WEEK)

(55) BCF (LAST YEAR)

(369) BCF (5-YR AVG)

U.S. Natural Gas Supply Gas Week 4/18 – 4/24

Average daily values (BCF/D):

Last Year (BCF/d)

Dry Production — +80.0

Total Supply — +85.6

Last Week (BCF/d)

Dry Production — +89.8

Total Supply — +95.0

[NEXT REPORT ON May 3]

U.S. Natural Gas Demand Gas Week 4/18 – 4/24

Average daily values (BCF/D):

Last Year (BCF/d)

Power — +23.1

Total Demand — +81.7

Last Week (BCF/d)

Power — +23.1

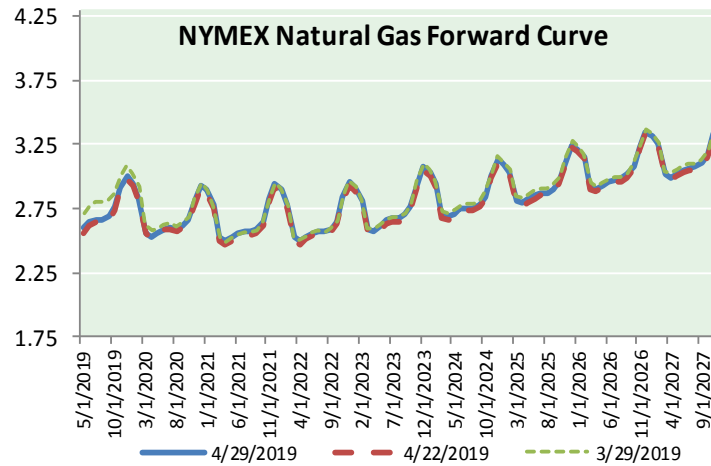
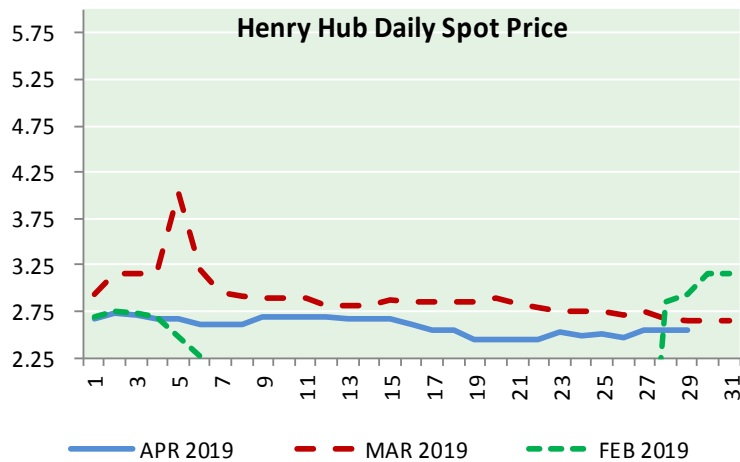
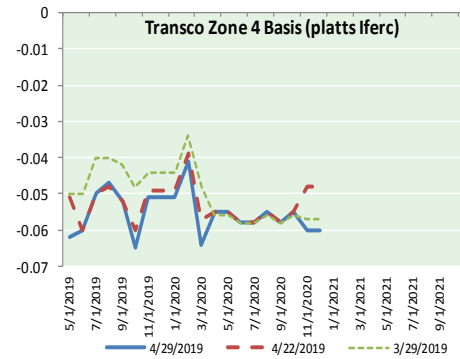
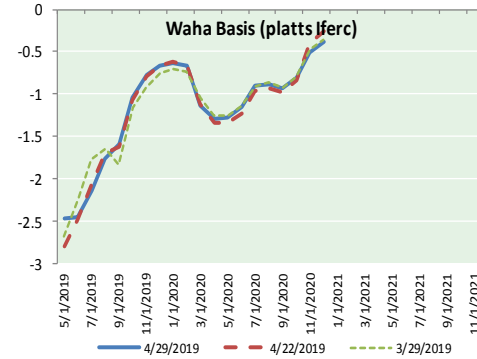
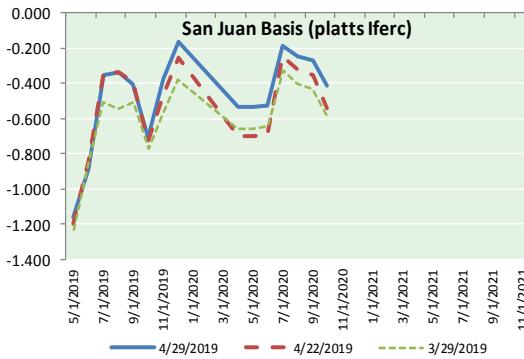
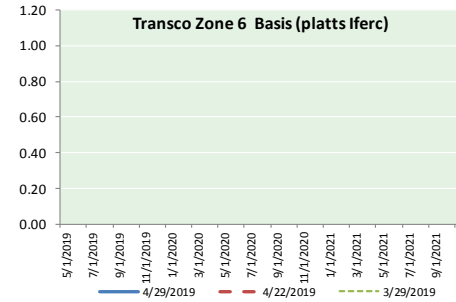
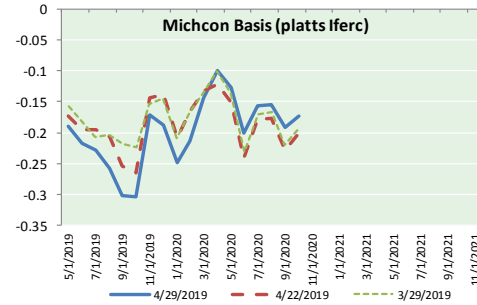
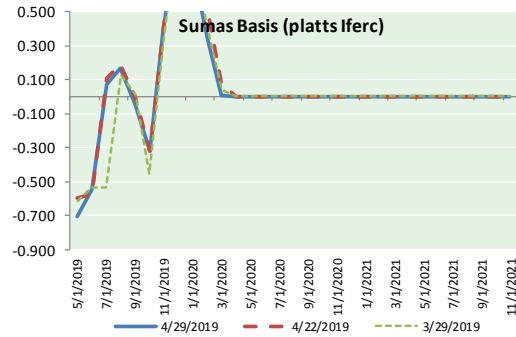
Total Demand — +77.9

[NEXT REPORT ON May 3]



NATURAL GAS NEWS

NATURAL GAS BASIS FUTURES, HENRY HUB SPOT PRICES, AND FORWARD CURVE



NYMEX WTI Delivery Month Average (\$/bbl) (Excluding Weekends and Holidays)

Month: April 2019

Day	Price	Day	Price
1	61.59	16	64.05
2	62.58	17	63.76
3	62.46	18	64.00
4	62.10	19	65.70
5	63.08	20	
6		21	
7		22	65.70
8	64.40	23	66.30
9	63.98	24	65.89
10	64.61	25	65.21
11	63.58	26	63.30
12	63.89	27	
13		28	
14		29	63.50
15	63.40	30	

Average (Apr) 63.9562
(through 04/29/2019)

Average (Mar) 58.1681

Average (Feb) 55.0360

CME NG Option Prices

ATM Call

Month	Strike	Close	Imp Vol
Jul-19			
Aug-19	2.650	0.086	22.5
Sep-19			
Oct-19			
Nov-19			

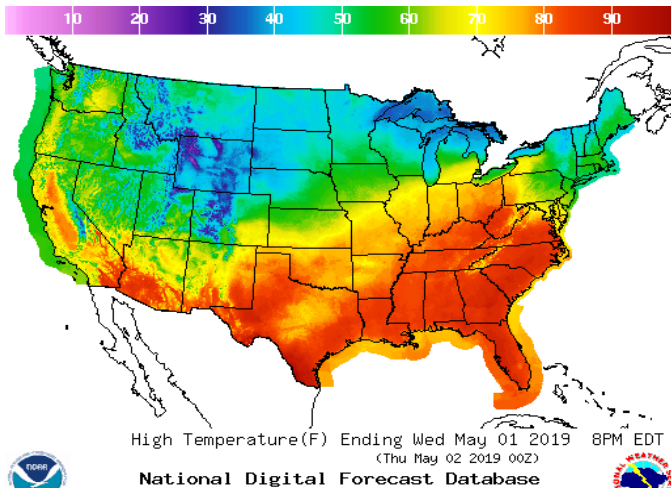
CME NG Option Prices

ATM Put

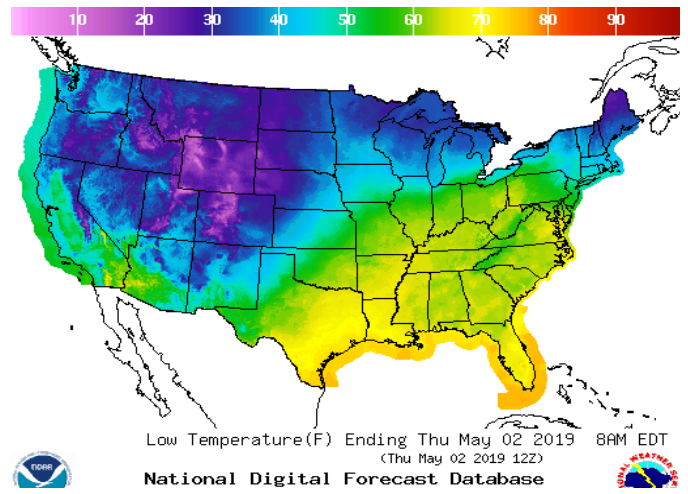
Month	Strike	Close	Imp Vol
Jul-19			
Aug-19	2.650	0.102	22.5
Sep-19			
Oct-19			
Nov-19			

WEATHER – HIGH / LOW TEMPERATURE TOMORROW

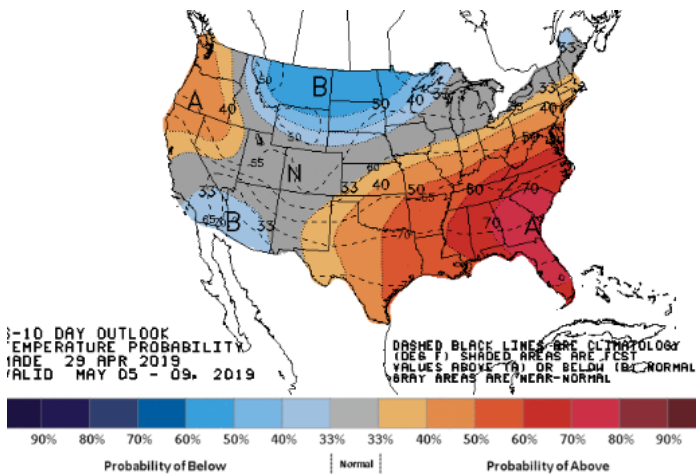
HIGH Temperature



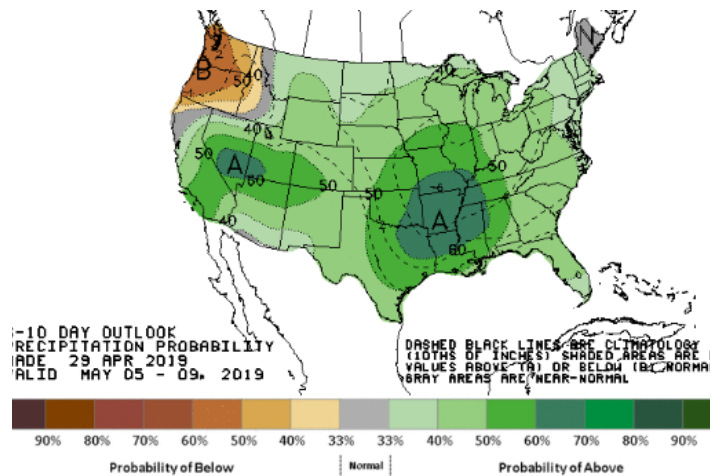
LOW Temperature



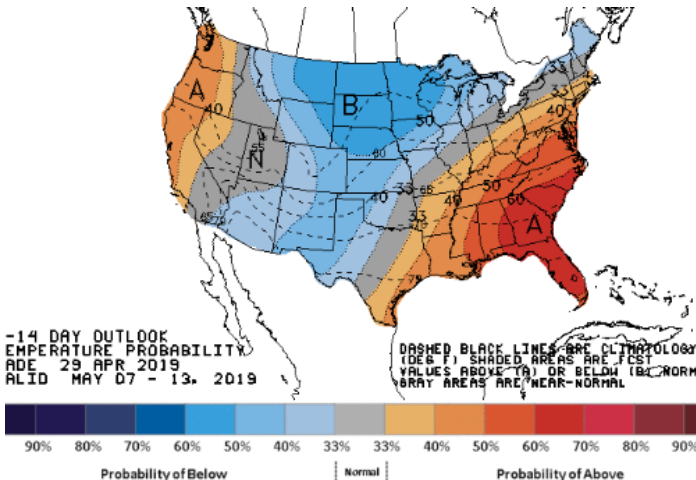
WEATHER – 6 TO 10 DAY OUTLOOK – NOAA
Temperature



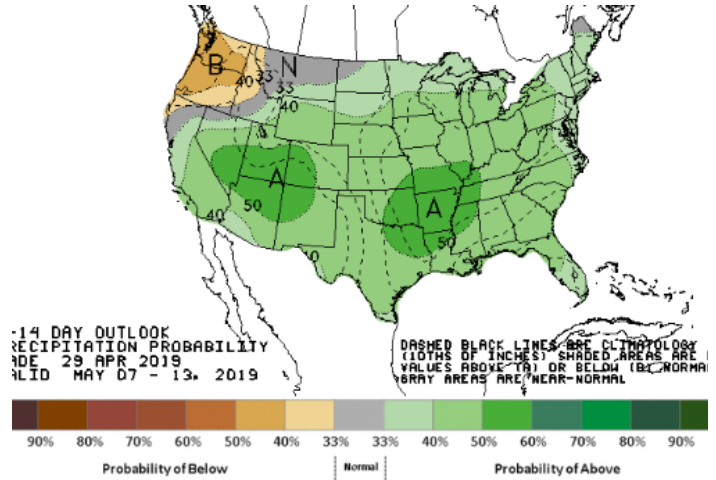
Precipitation



WEATHER – 8 TO 14 DAY OUTLOOK – NOAA
Temperature

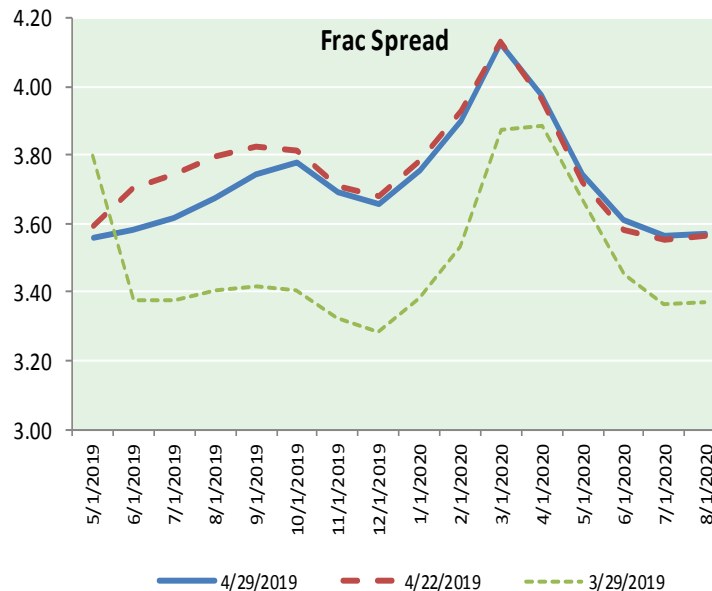
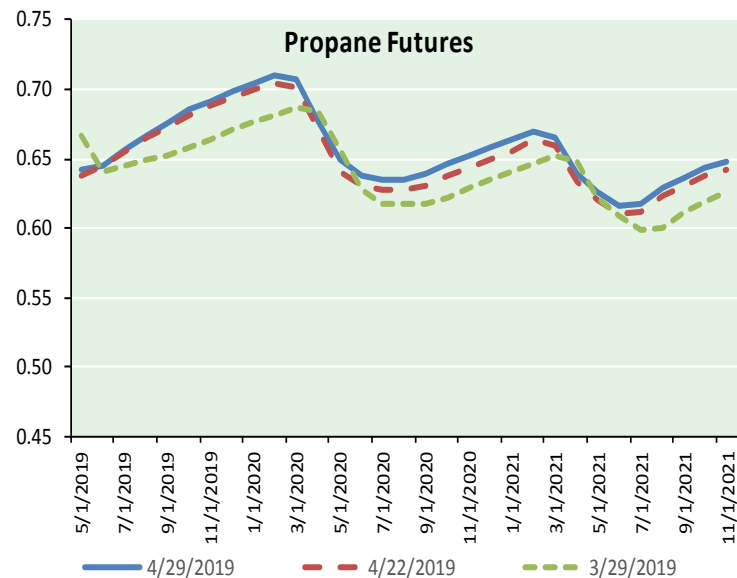
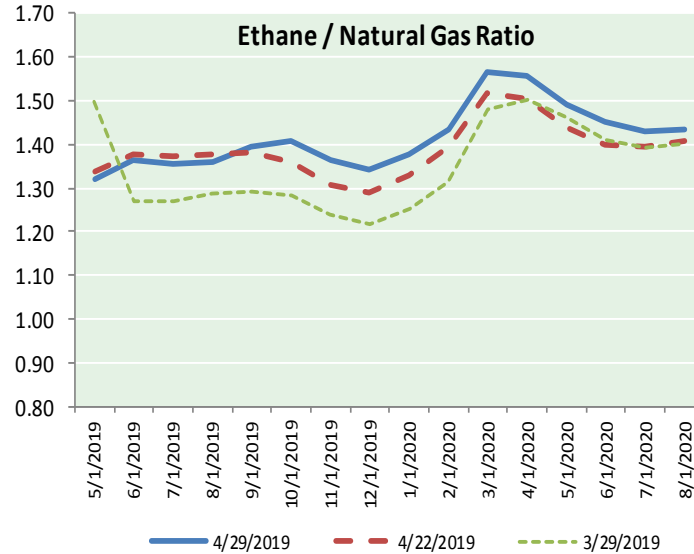
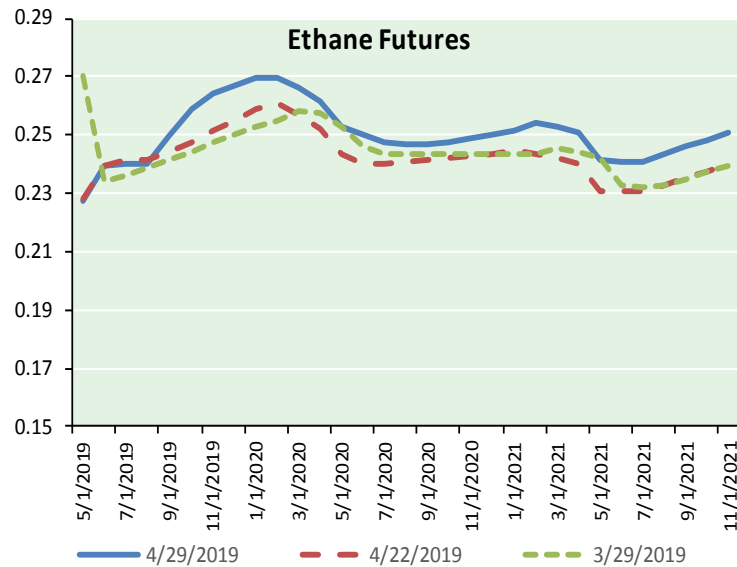


Precipitation





ETHANE FUTURES, NG/ETHANE RATIO, PROPANE FUTURES, AND THE FRAC SPREAD



CME Future Prices

Month	Close	Change
May-19	0.227	0.001
Jun-19	0.239	0.010
Jul-19	0.240	0.009
Aug-19	0.240	0.009
Sep-19	0.249	0.009
Oct-19	0.259	0.006
Nov-19	0.264	0.006
Dec-19	0.267	0.006
Jan-20	0.269	0.006
Feb-20	0.269	0.006
Mar-20	0.266	0.006
Apr-20	0.261	0.006
1YR Strip	0.254	0.007

CME Future Prices

Propane (C3)
Non-LDH— Mont Belvieu

Month	Close	Change
May-19	0.642	(0.002)
Jun-19	0.646	(0.018)
Jul-19	0.656	(0.018)
Aug-19	0.666	(0.018)
Sep-19	0.676	(0.017)
Oct-19	0.685	(0.016)
Nov-19	0.692	(0.016)
Dec-19	0.699	(0.015)
Jan-20	0.705	(0.014)
Feb-20	0.710	(0.014)
Mar-20	0.708	(0.013)
Apr-20	0.678	(0.011)
1YR Strip	0.680	(0.014)

NATURAL GAS NEWS



Prompt WTI (CL) Crude
Daily Sentiment

BULLISH



RESISTANCE
63.97 & 64.45
SUPPORT
62.74 & 61.99

FOLLOW US ON TWITTER:



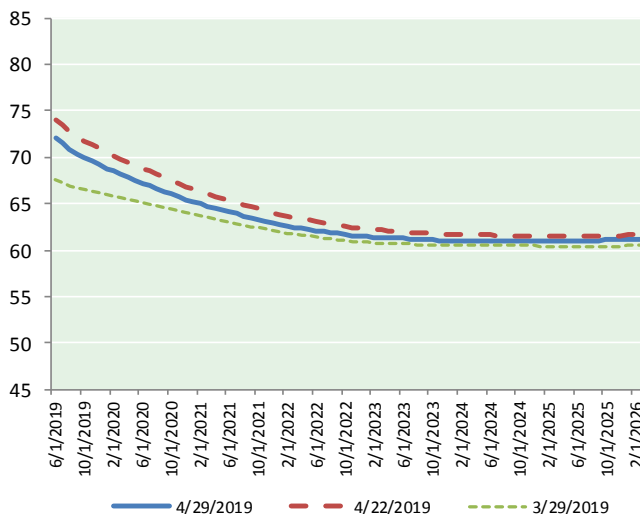
@MPG_NatGasNews

NYMEX Brent (BZ)

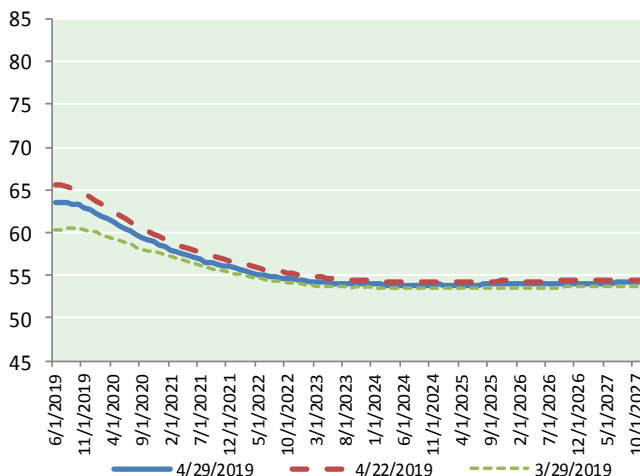
Futures

Month	Close	Change
Jun-19	63.50	0.20
Jul-19	63.57	0.19
Aug-19	63.54	0.18
Sep-19	63.42	0.19
Oct-19	63.23	0.19
Nov-19	62.98	0.18
Dec-19	62.67	0.18
Jan-20	62.33	0.19
Feb-20	61.96	0.18
Mar-20	61.58	0.17
Apr-20	61.21	0.15
May-20	60.86	0.16
Jun-20	60.51	0.14
Jul-20	60.14	0.14
Aug-20	59.79	0.13
Sep-20	59.47	0.14
Oct-20	59.17	0.15
Nov-20	58.91	0.14
Dec-20	58.64	0.10
Jan-21	58.33	0.11
Feb-21	58.02	0.11
Mar-21	57.75	0.10
Apr-21	57.50	0.09
May-21	57.27	0.08
1YR Strip	62.57	0.18
2019	63.27	0.19
5YR Strip	57.07	0.06

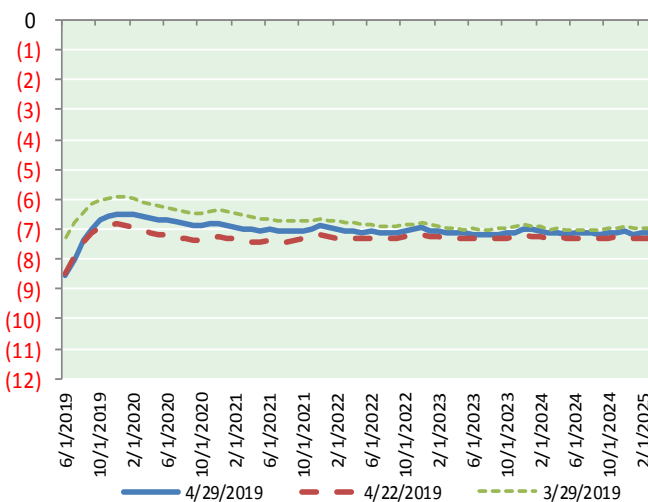
BRENT CRUDE FORWARD CURVE



WTI CRUDE FORWARD CURVE



WTI-BRENT SPREAD



FRAC Spread

Specifications

Ethane : 42% 66,500 btu/g
Propane: 28% 90,830 btu/g
Butane: 11% 102,916 btu/g
Iso-Butane: 6% 98,935 btu/g
Natural Gasoline: 13%
115,021 btu/g

Prompt NGL Futures

	May-19	Close	Change
Butane	0.752	(0.002)	
Iso-Butane	0.758	(0.002)	
Nat Gasoline	1.303	(0.001)	

NYMEX WTI (CL) Futures

Month	Close	Change
Jun-19	72.04	(0.11)
Jul-19	71.54	(0.09)
Aug-19	70.92	(0.08)
Sep-19	70.39	(0.06)
Oct-19	69.91	(0.04)
Nov-19	69.54	(0.02)
Dec-19	69.17	0.01
Jan-20	68.81	0.01
Feb-20	68.47	0.02
Mar-20	68.15	0.02
Apr-20	67.84	0.03
May-20	67.53	0.04
Jun-20	67.21	0.04
Jul-20	66.92	0.03
Aug-20	66.63	0.03
Sep-20	66.33	0.03
Oct-20	66.03	0.02
Nov-20	65.73	0.04
Dec-20	65.44	0.05
Jan-21	65.21	0.06
Feb-21	64.98	0.06
Mar-21	64.75	0.06
Apr-21	64.53	0.05
May-21	64.31	0.04
1YR Strip	69.53	(0.02)
2019	70.50	(0.06)
5YR Strip	64.05	(0.04)