

# NATURAL GAS



APRIL 2, 2018

## Prior Day's NYMEX Apr-18 Contract (CT)



## NYMEX NG Futures

Month	Close	Change
May-18	2.733	0.035
Jun-18	2.778	0.027
Jul-18	2.832	0.024
Aug-18	2.847	0.024
Sep-18	2.833	0.024
Oct-18	2.846	0.024
Nov-18	2.889	0.022
Dec-18	3.012	0.022
Jan-19	3.095	0.021
Feb-19	3.059	0.019
Mar-19	2.955	0.013
Apr-19	2.665	0.004
May-19	2.634	0.004
Jun-19	2.660	0.004
Jul-19	2.689	0.004
Aug-19	2.694	0.003
Sep-19	2.681	0.002
Oct-19	2.708	0.003
Nov-19	2.767	0.003
Dec-19	2.898	0.004
Jan-20	3.006	0.005
Feb-20	2.984	0.007
Mar-20	2.895	0.008
Apr-20	2.649	0.008
1YR Strip	2.879	0.022
2018	2.846	0.025
5YR Strip	2.842	0.018

## IN THE NEWS

Will U.S. Natural Gas Production Outpace Demand? — Forbes reported: Although oil has caught up, it was originally natural gas that ignited the U.S. shale revolution that began about a decade ago. Looking forward now, the upside to gas prices seems as small as it has ever been: our Energy Information Administration's National Energy Modeling System projects that U.S. gas production will increasingly outpace demand. That's mostly because the amount of gas that we have at our disposal is really without end. We probably have the largest lowest cost gas resource in the world, and our proven reserves alone were up 5% last year to 341 trillion cubic feet - a 60% leap since 2006. More short-term, EIA has gas production outpacing domestic demand over each of the next two years by about 3 Bcf/d. Most of our new demand potential, however, is in the export market, which isn't factored into that. As the wildcard in our gas market, exports to Mexico and LNG will account for 70-80% of new demand for at least the next five years. According to EIA, LNG exports alone will increase by ~5.5 Bcf/d by the end of 2019 to nearly 9 Bcf/d. So, production will need to rise to the mid-80s Bcf/d level to support this structural increase in consumption. For more on this story visit [forbes.com](http://forbes.com) or click <http://bit.ly/2Ee6LGU>

- Will U.S. Natural Gas Production Outpace Demand?
- Europe's Biggest Gas Field To Close Over Quake Risk

Duke Energy Turns To A New Source Of Natural Gas: NC Hogs — Oilprice.com reported: Europe's biggest gas field--Groningen has been pumping gas for more than half a century and supplies gas to 98 percent of the Dutch population. But the field has been causing earthquakes that have become a growing concern for residents and authorities. After years of debates and measures to curb production at the field, the Dutch government decided this week that output at Groningen will be terminated by 2030. For more visit [oilprice.com](http://oilprice.com) or click <http://bit.ly/2EdFYKr>

## 12 MONTH CANDLESTICK (WEEKLY)



## Prompt Natural Gas (NG) Daily Sentiment

**NEUTRAL**



RESISTANCE

2.77 & 2.80

SUPPORT

2.70 & 2.67

## Trading Summary

### NATURAL GAS

Futures	Close	Change
NG	2.733	0.035
Volume	-	17,021
Open Int.	1,432,876	5,587

### CRUDE AND GASOLINE

Futures	Close	Change
Crude	64.94	0.56
RBOB	2.0206	0.0014
Crude/NG	23.76	(0.10)

### METALS

Futures	Close	Change
Gold	1,322.80	10.30

### EQUITIES

Exchange	Close	Change
DOW	24,103.11	0.00
S&P 500	-254.69	0.00

### CURRENCY

Currency	Close	Change
EUR/USD	1.2362	(0.0012)
USD/CND	1.2405	(0.0024)

## Contact Us



### Mansfield Energy Corp

1025 Airport Pkwy  
Gainesville, GA 30501

[www.mansfield.energy](http://www.mansfield.energy)

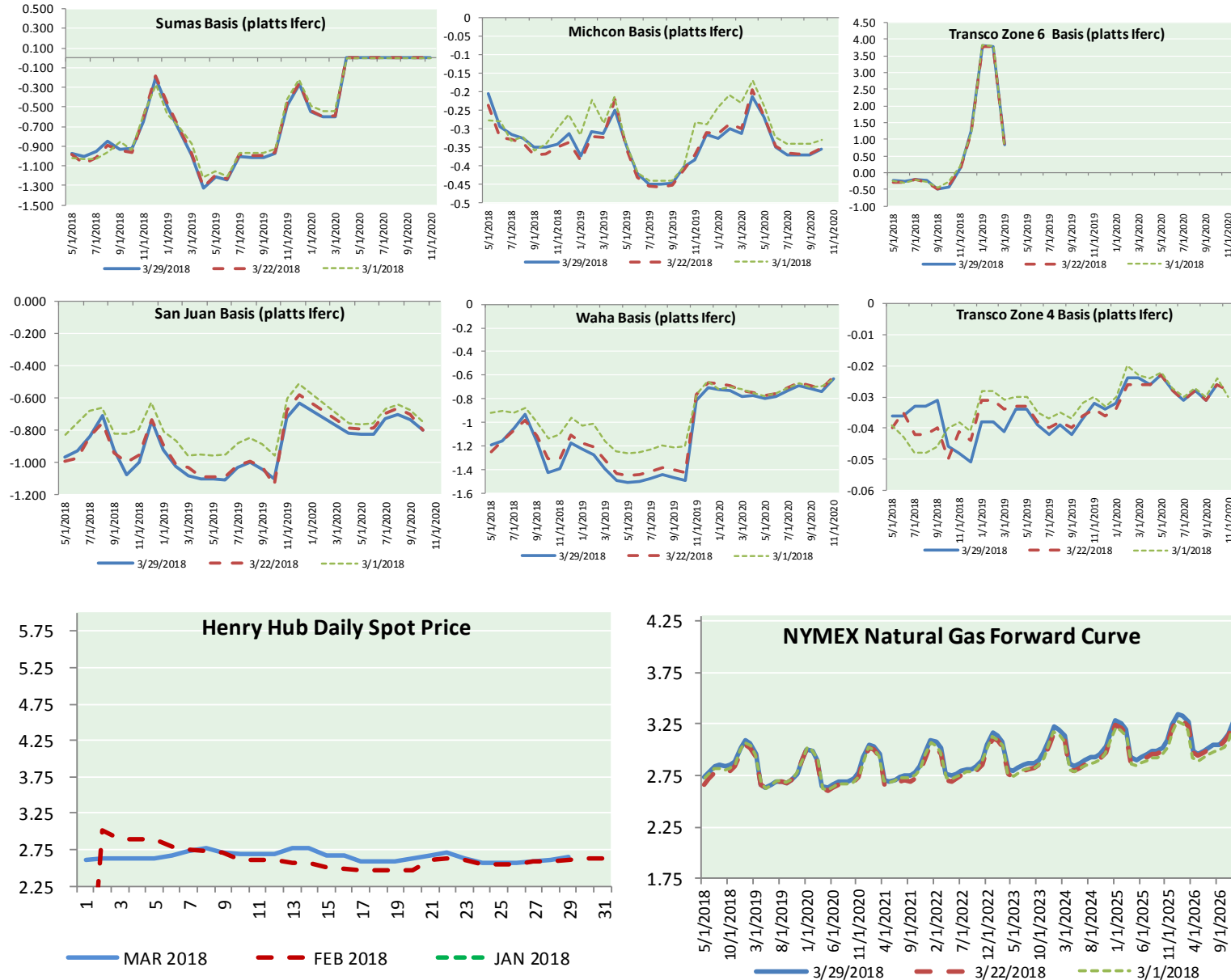
[info@mansfieldoil.com](mailto:info@mansfieldoil.com)

Phone: (800) 695-6626





NATURAL GAS BASIS FUTURES, HENRY HUB SPOT PRICES, AND FORWARD CURVE



**NYMEX WTI Delivery**  
**Month Average (\$/bbl)**  
 (Excluding Weekends and Holidays)

Month: April 2018

Day	Price	Day	Price
1	16	16	
2	17	17	
3	18	18	
4	19	19	
5	20	20	
6	21	21	
7	22	22	
8	23	23	
9	24	24	
10	25	25	
11	26	26	
12	27	27	
13	28	28	
14	29	29	
15	30	30	

Average (Apr)	#DIV/0!
(through 03/29/2018)	
Average (Mar)	62.7719
Average (Feb)	62.1837

**CME NG Option Prices**

**ATM Call**

Month	Strike	Close	Imp	Vol
Jun-18				
Jul-18	2.800	0.085		20.6
Aug-18				
Sep-18				
Oct-18				

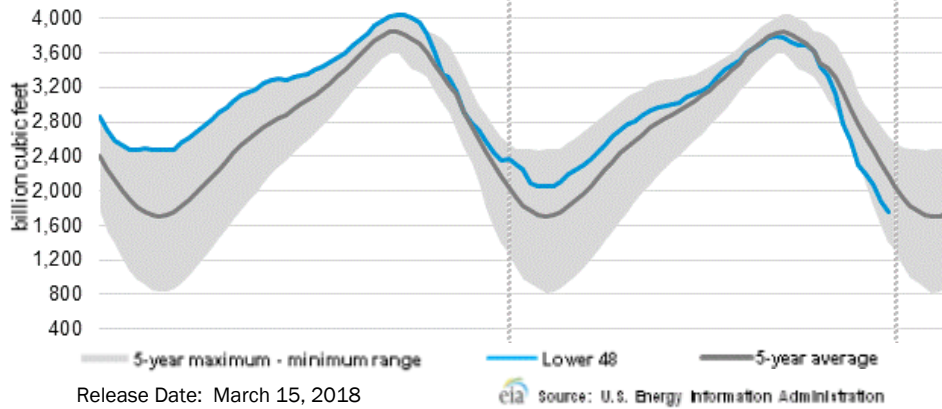
**CME NG Option Prices**

**ATM Put**

Month	Strike	Close	Imp	Vol
Jun-18				
Jul-18	2.800	0.107		24.3
Aug-18				
Sep-18				
Oct-18				

# NATURAL GAS NEWS

## WEEKLY GAS IN UNDERGROUND STORAGE WITH 5-YR RANGE



## Rig Count

Report Date: March 29, 2018

	Total	Change
US -	993	(2)
CN -	134	(27)

## EIA Weekly NG Storage Actual and Surveys for March 22, 2018

Released March 29, 2018

Range (50) to (81)

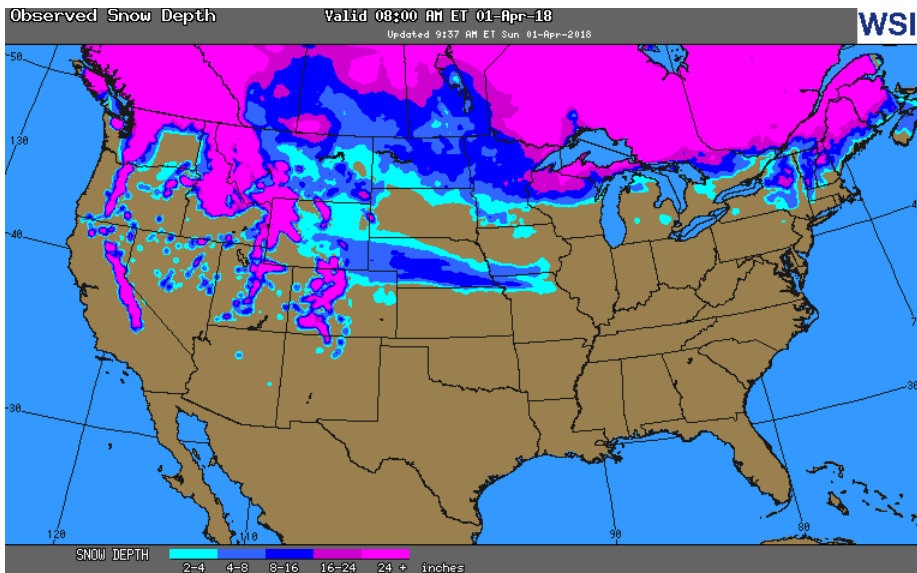
PIRA – (65)

ARM – (70)

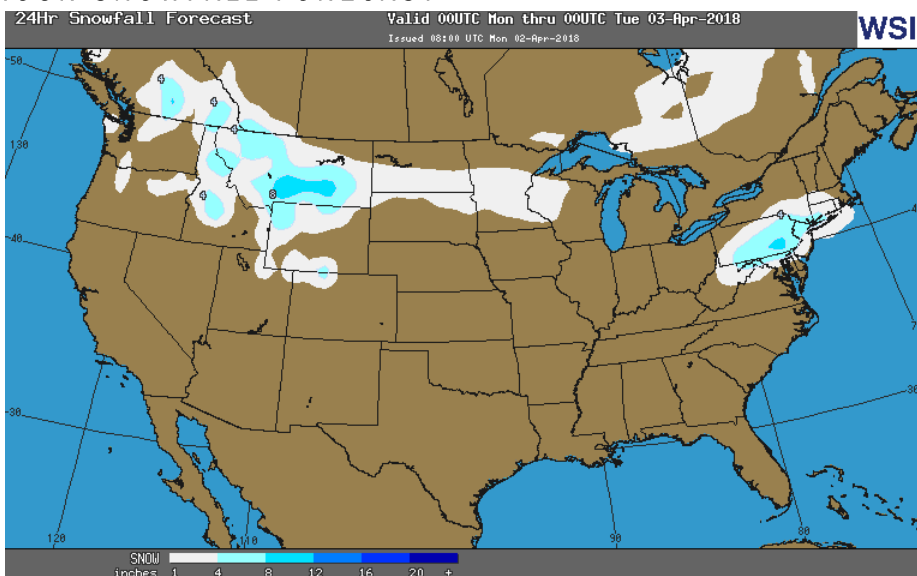
Reuters – (66)

EIA ACTUAL – (63)

## OBSERVED SNOW DEPTH



## 24 HOUR SNOWFALL FORECAST



## Total Working Gas In Storage

**1,383 BCF**

(63) BCF (LAST WEEK)

(672) BCF (LAST YEAR)

(346) BCF (5-YR AVG)

## U.S. Natural Gas Supply Gas Week 3/22– 4/5

Average daily values (BCF/D):

Last Year (BCF/d)

Dry Production – +70.9

Total Supply – +76.7

Last Week (BCF/d)

Dry Production – +79.2

Total Supply – +86.2

[NEXT REPORT ON Apr 5]

## U.S. Natural Gas Demand Gas Week 3/22– 4/5

Average daily values (BCF/D):

Last Year (BCF/d)

Power – +21.6

Total Demand – +77.3

Last Week (BCF/d)

Power – +23.2

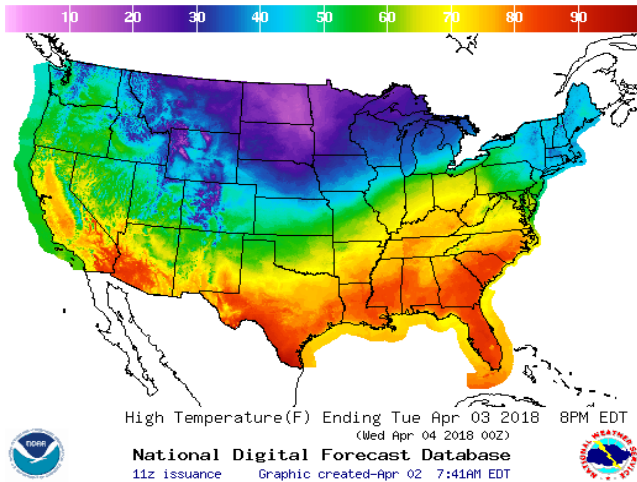
Total Demand – +90.9

[NEXT REPORT ON Apr 5]

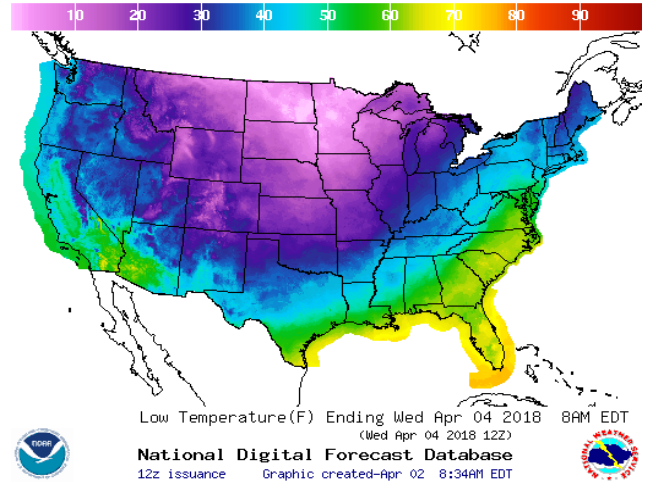


WEATHER – HIGH / LOW TEMPERATURE TOMORROW

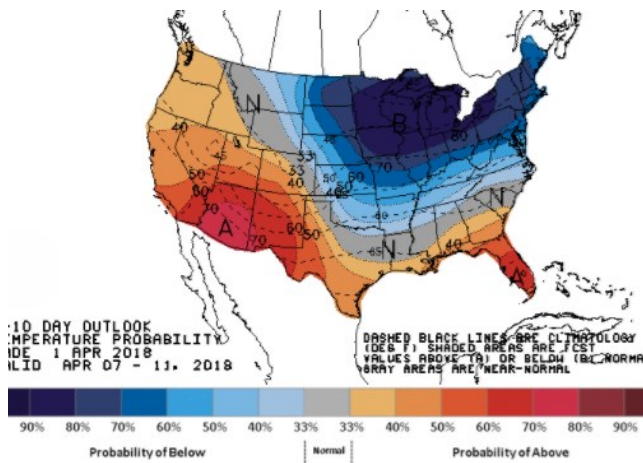
HIGH Temperature



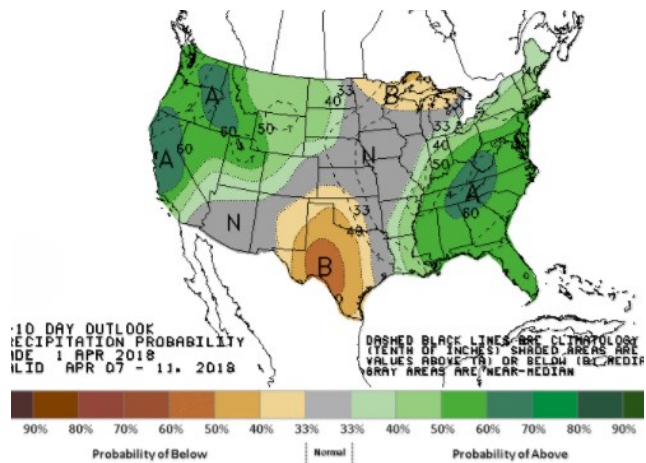
LOW Temperature



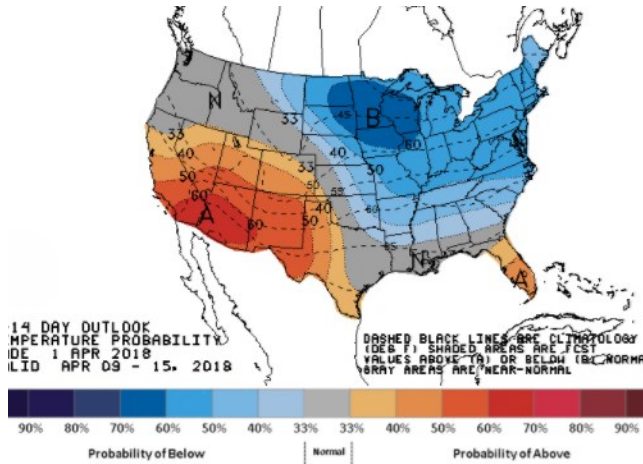
WEATHER – 6 TO 10 DAY OUTLOOK – NOAA  
Temperature



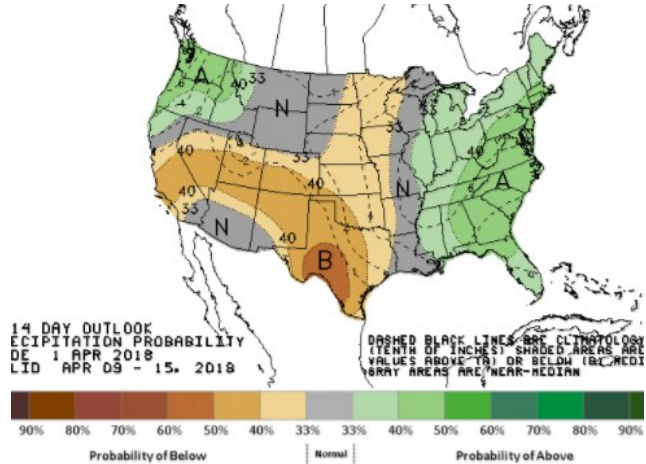
Precipitation



WEATHER – 8 TO 14 DAY OUTLOOK – NOAA  
Temperature

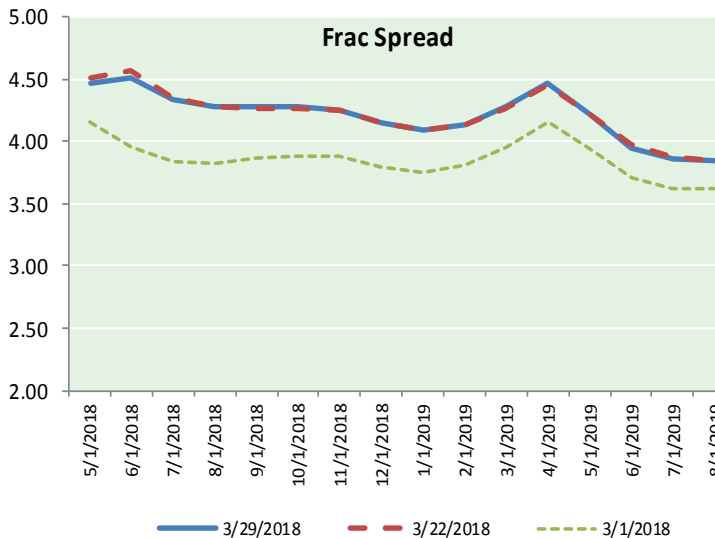
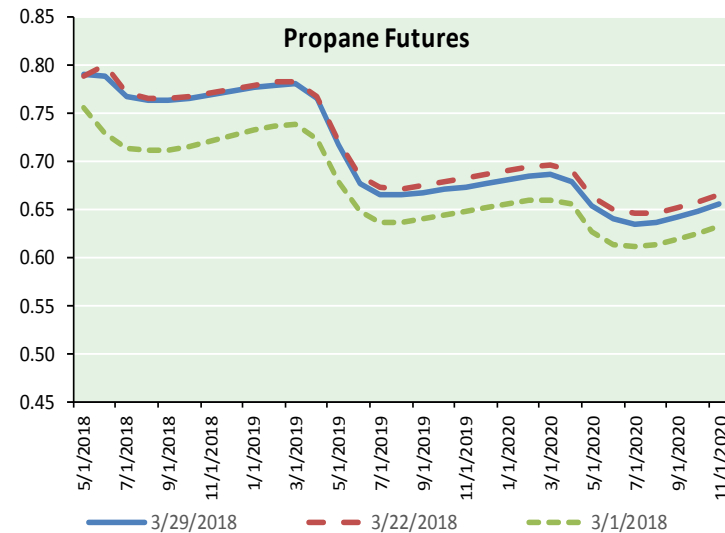
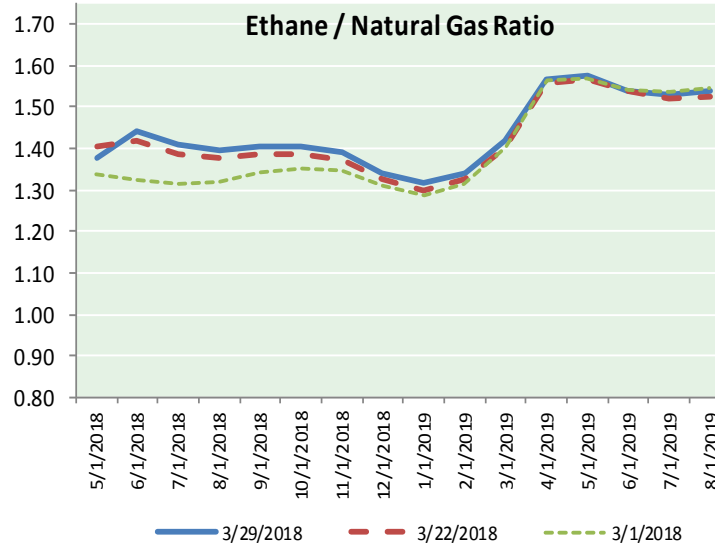
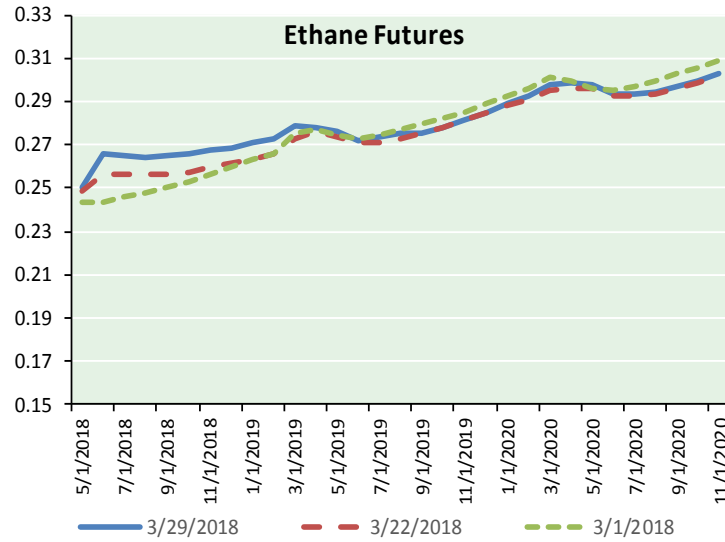


Precipitation





ETHANE FUTURES, NG/ETHANE RATIO, PROPANE FUTURES, AND THE FRAC SPREAD



CME Future Prices

Ethane (C2)

Non-LDH— Mont Belvieu

	(cents/gallon)	
Month	Close	Change
May-18	0.250	(0.000)
Jun-18	0.266	(0.001)
Jul-18	0.265	0.001
Aug-18	0.264	0.002
Sep-18	0.265	0.003
Oct-18	0.266	0.003
Nov-18	0.268	0.003
Dec-18	0.269	0.002
Jan-19	0.271	0.002
Feb-19	0.273	0.002
Mar-19	0.279	0.001
Apr-19	0.278	(0.001)

1YR Strip 0.268 0.001

CME Future Prices

Propane (C3)

Non-LDH— Mont Belvieu

	(cents/gallon)	
Month	Close	Change
May-18	0.791	0.000
Jun-18	0.790	(0.002)
Jul-18	0.769	(0.002)
Aug-18	0.764	(0.002)
Sep-18	0.764	(0.001)
Oct-18	0.766	(0.001)
Nov-18	0.770	(0.001)
Dec-18	0.774	(0.001)
Jan-19	0.778	(0.001)
Feb-19	0.780	(0.001)
Mar-19	0.781	(0.001)
Apr-19	0.766	(0.001)

1YR Strip 0.774 (0.001)

# NATURAL GAS NEWS



## Prompt WTI (CL) Crude Daily Sentiment

**BULLISH**



RESISTANCE  
65.41 & 65.89  
SUPPORT  
64.31 & 63.69

### FOLLOW US ON TWITTER:



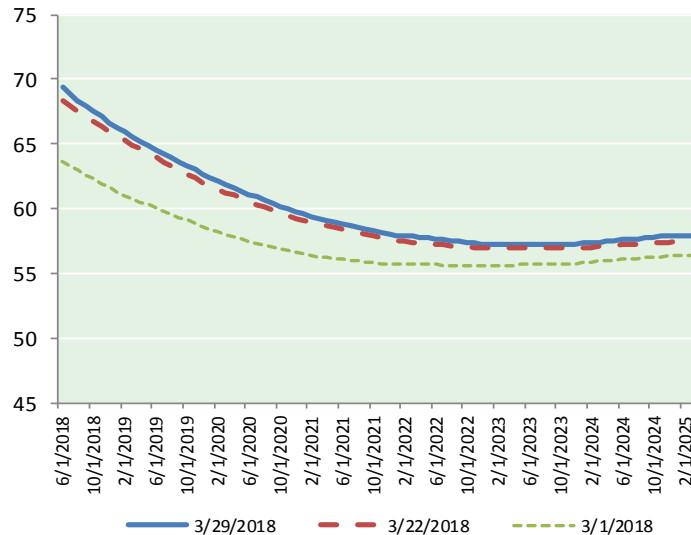
@MPG\_NatGasNews

## NYMEX Brent (BZ)

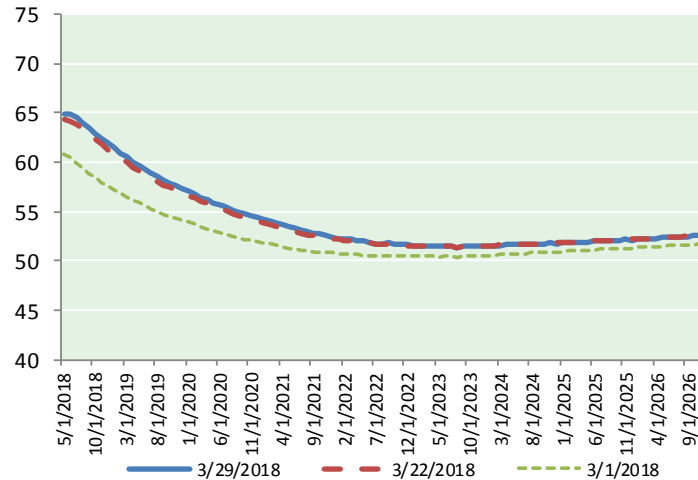
### Futures

Month	Close	Change
Jun-18	69.34	0.58
Jul-18	68.85	0.53
Aug-18	68.36	0.49
Sep-18	67.91	0.46
Oct-18	67.49	0.44
Nov-18	67.09	0.42
Dec-18	66.68	0.40
Jan-19	66.29	0.38
Feb-19	65.94	0.37
Mar-19	65.58	0.35
Apr-19	65.22	0.33
May-19	64.87	0.31
Jun-19	64.52	0.29
Jul-19	64.25	0.28
Aug-19	63.95	0.26
Sep-19	63.63	0.24
Oct-19	63.32	0.22
Nov-19	63.01	0.20
Dec-19	62.65	0.18
Jan-20	62.35	0.17
Feb-20	62.12	0.16
Mar-20	61.88	0.15
Apr-20	61.63	0.14
May-20	61.39	0.11
1YR Strip	66.97	0.42
2018	67.96	0.47
5YR Strip	60.93	0.06

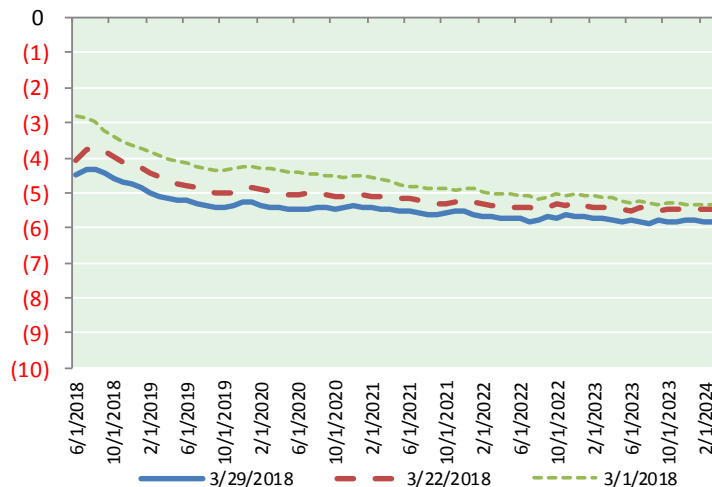
## BRENT CRUDE FORWARD CURVE



## WTI CRUDE FORWARD CURVE



## WTI-BRENT SPREAD



## FRAC Spread

### Specifications

Ethane : 42%	66,500 btu/g
Propane: 28%	90,830 btu/g
Butane: 11%	102,916 btu/g
Iso-Butane: 6%	98,935 btu/g
Natural Gasoline: 13%	115,021 btu/g

## Prompt NGL Futures

(\$/gallon)

	May-18	Close	Change
Butane	0.912	0.000	
Iso-Butane	0.913	0.001	
Nat Gasoline	1.458	0.000	

## NYMEX WTI (CL) Futures

Month	Close	Change
May-18	64.94	0.56
Jun-18	64.87	0.52
Jul-18	64.54	0.48
Aug-18	64.04	0.45
Sep-18	63.48	0.41
Oct-18	62.92	0.38
Nov-18	62.40	0.35
Dec-18	61.91	0.32
Jan-19	61.43	0.31
Feb-19	60.94	0.29
Mar-19	60.48	0.27
Apr-19	60.06	0.26
May-19	59.67	0.24
Jun-19	59.31	0.22
Jul-19	58.92	0.20
Aug-19	58.56	0.18
Sep-19	58.22	0.15
Oct-19	57.91	0.13
Nov-19	57.63	0.11
Dec-19	57.37	0.09
Jan-20	57.06	0.08
Feb-20	56.76	0.05
Mar-20	56.48	0.03
Apr-20	56.19	0.01
1YR Strip	62.67	0.38
2018	63.64	0.43
5YR Strip	55.77	(0.00)