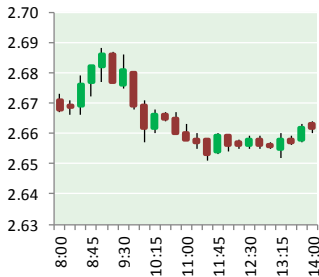


NATURAL GAS



APRIL 15, 2019

Prior Day's NYMEX MAY-19 Contract (CT)



NYMEX NG Futures

Month	Close	Change
May-19	2.660	(0.004)
Jun-19	2.704	(0.004)
Jul-19	2.764	(0.002)
Aug-19	2.789	(0.002)
Sep-19	2.782	(0.003)
Oct-19	2.806	(0.002)
Nov-19	2.877	0.002
Dec-19	3.030	0.003
Jan-20	3.112	0.003
Feb-20	3.057	0.005
Mar-20	2.929	0.005
Apr-20	2.646	0.003
May-20	2.612	0.005
Jun-20	2.640	0.006
Jul-20	2.669	0.007
Aug-20	2.672	0.008
Sep-20	2.655	0.007
Oct-20	2.676	0.006
Nov-20	2.719	0.005
Dec-20	2.869	0.003
Jan-21	2.977	0.000
Feb-21	2.932	0.000
Mar-21	2.804	0.000
Apr-21	2.542	0.000
1YR Strip 2019	2.846	0.000
5YR Strip	2.746	0.001

IN THE NEWS

SIGNIFICANT NATURAL GAS DISCOVERY MADE OFF ISRAEL'S SHORE—The Jerusalem Post reported: Greek energy producer Energean has discovered a further significant natural gas reserve off Israel's coast, the company announced on Monday. According to preliminary estimates, the latest discovery in the Karish North exploration field contains between 28 to 42 billion cubic meters

- SIGNIFICANT NATURAL GAS DISCOVERY MADE OFF ISRAEL'S SHORE
- ANALYSIS EXAMINES NATURAL GAS STORAGE

(Bcm) of natural gas. Publicly-listed Energean will now conduct further evaluations to further analyze resource potential and determine the liquids content of the discovery. The newly-found gas will be added to the 45 Bcm already discovered at Karish, and an additional 22 Bcm identified at the Tanin gas field, also managed by Energean. "We are delighted to be announcing this significant new gas discovery at Karish North, which further demonstrates the attractiveness of our acreage offshore Israel," said Energean CEO Mathios Rigas. For more on this story visit jpost.com or click <https://bit.ly/2KHsTSb>

ANALYSIS EXAMINES NATURAL GAS STORAGE— Daily Energy Insider reported: The Energy Information Administration's (EIA) Weekly Natural Gas Storage Report maintains working natural gas storage in the Lower 48 states on March 31 totaled 1,137 billion cubic feet (Bcf). Officials estimated working gas stocks were 491 Bcf or 30 percent lower than the current five-year (2014–18) average for the end of the heating season and determined the 2018–19 heating season had the lowest level of working gas stocks in the United States for this time of year since 2014, when working gas stocks ended the 2013–14 heating season at 837 Bcf because of multiple, intense cold snaps. The EIA analysis showed working gas stocks totaled 3,198 Bcf at the beginning of the winter heating season in November 2018, which represented the lowest level since 2002 and followed a fairly typical path during the winter season. The withdrawal season started early with colder-than-normal temperatures in November resulting in larger than normal withdrawals of 206 Bcf. For more on this story visit dailyenergyinsider.com or click <https://bit.ly/2v5U6n9>

12 MONTH CANDLESTICK (WEEKLY)



Prompt Natural Gas (NG) Daily Sentiment

BEARISH



RESISTANCE
2.68 & 2.70
SUPPORT
2.64 & 2.63

Trading Summary

NATURAL GAS

Futures	Close	Change
NG	2.660	(0.004)
Volume	245,616	(144,107)
Open Int.	1,238,284	4,753

CRUDE AND GASOLINE

Futures	Close	Change
Crude	63.89	0.31
RBOB	2.0370	0.0061
Crude/NG	24.02	0.15

METALS

Futures	Close	Change
Gold	1,290.60	(8.30)

EQUITIES

Exchange	Close	Change
DOW	26,377.37	(34.93)
S&P 500	-2,444.61	(2.99)

CURRENCY

Currency	Close	Change
EUR/USD	1.1304	0.0005
USD/CND	1.2405	(0.0022)

Contact Us



Mansfield Energy Corp
1025 Airport Pkwy
Gainesville, GA 30501

www.mansfield.energy
info@mansfieldoil.com

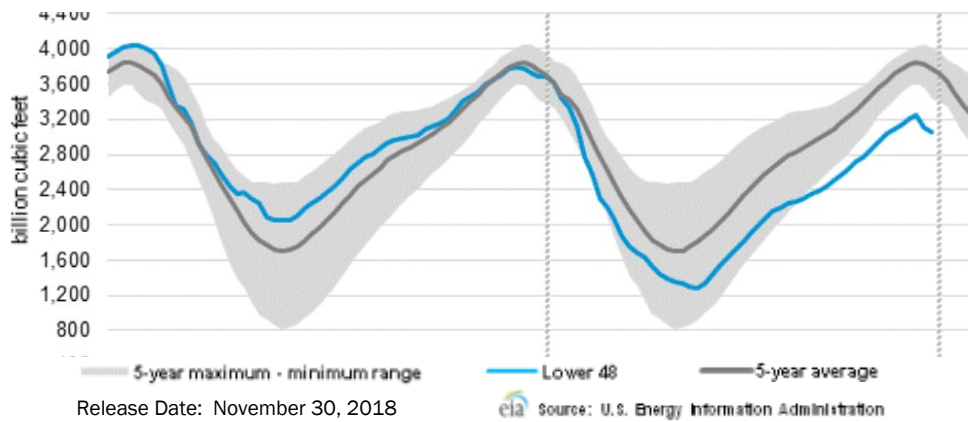
Phone: (800) 695-6626





NATURAL GAS NEWS

WEEKLY GAS IN UNDERGROUND STORAGE WITH 5-YR RANGE



Rig Count

Report Date: March 22, 2019

	Total	Change
US -	1,016	(22)
CN -	105	(106)

EIA Weekly NG Storage Actual and Surveys for April 12, 2019

Released April 11, 2019

Range — +33 to +97

PIRA— (36)

PointLogic — (34)

Citi Futures — (17)

EIA ACTUAL — (25)

Total Working Gas In Storage

1,155 BCF

(25) BCF (LAST WEEK)

(183) BCF (LAST YEAR)

(485) BCF (5-YR AVG)

U.S. Natural Gas Supply Gas Week 4/4 — 4/10

Average daily values (BCF/D):

Last Year (BCF/d)

Dry Production — +80.8

Total Supply — +87.2

Last Week (BCF/d)

Dry Production — +89.7

Total Supply — +94.8

[NEXT REPORT ON Apr 19]

U.S. Natural Gas Demand Gas Week 4/4 — 4/10

Average daily values (BCF/D):

Last Year (BCF/d)

Power — +23.52

Total Demand — +90.7

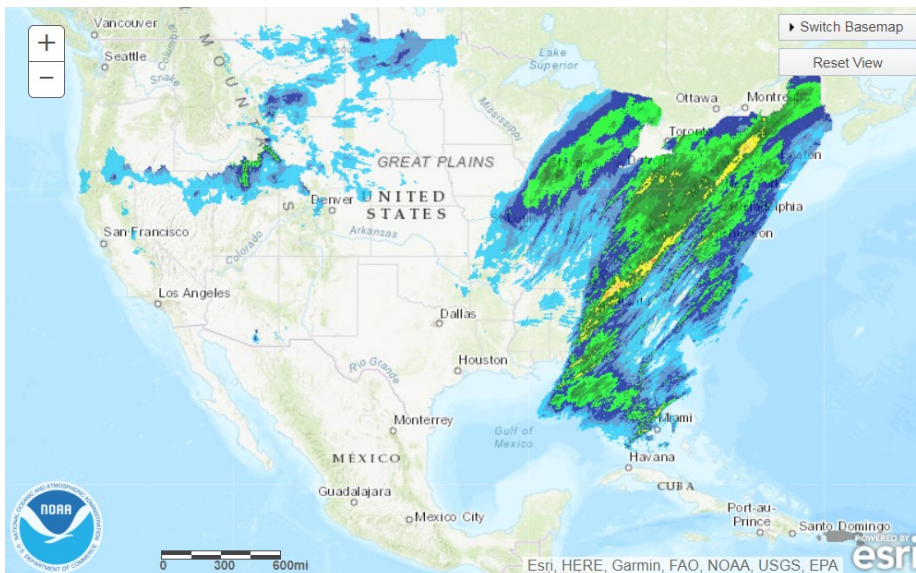
Last Week (BCF/d)

Power — +21.9

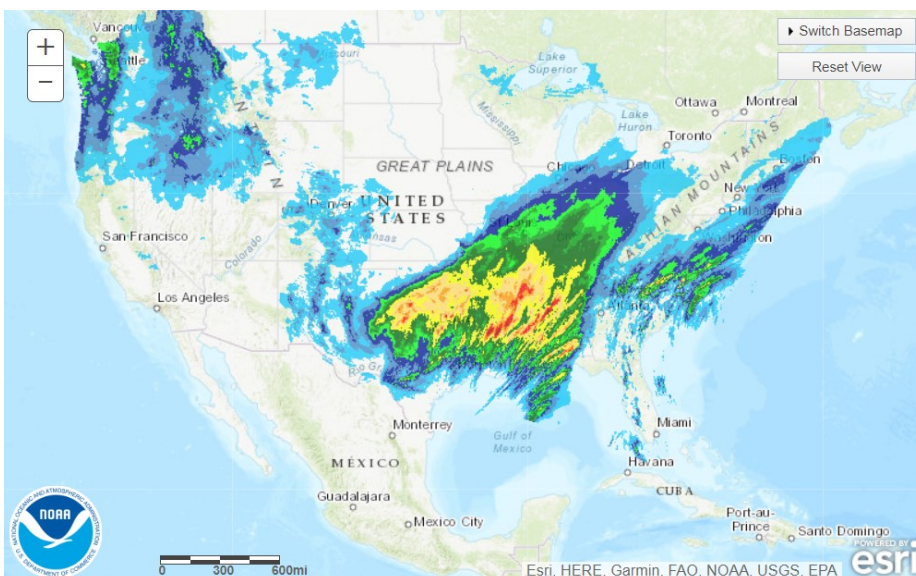
Total Demand — +84.3

[NEXT REPORT ON Apr 19]

TODAY'S PRECIPITATION



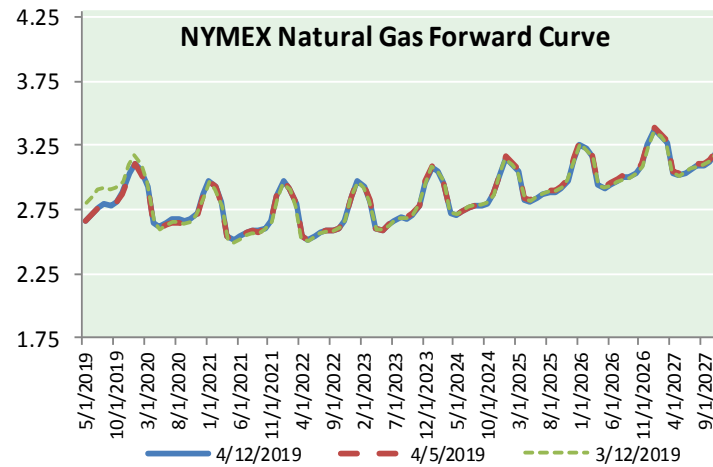
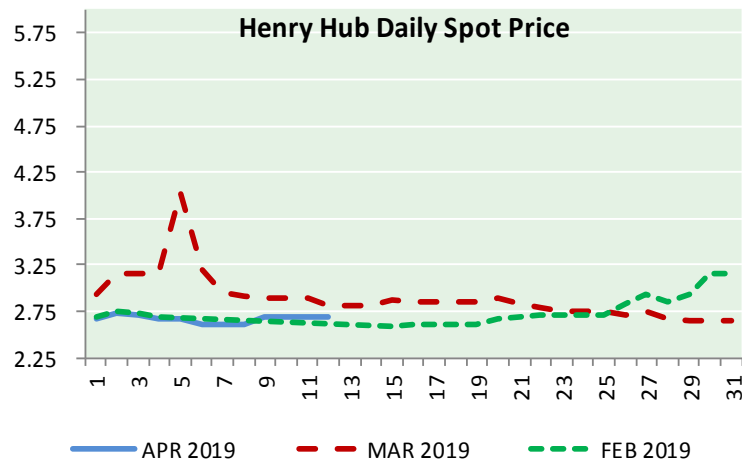
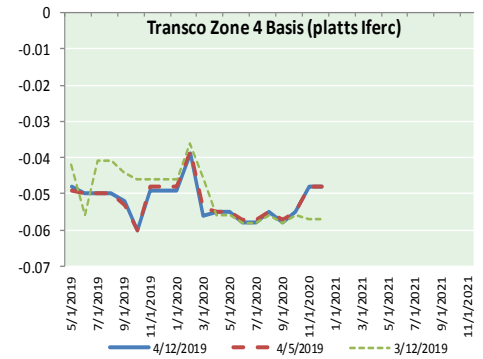
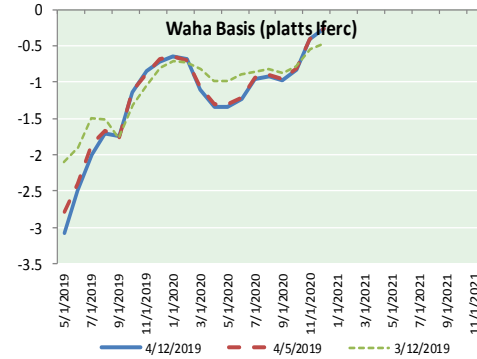
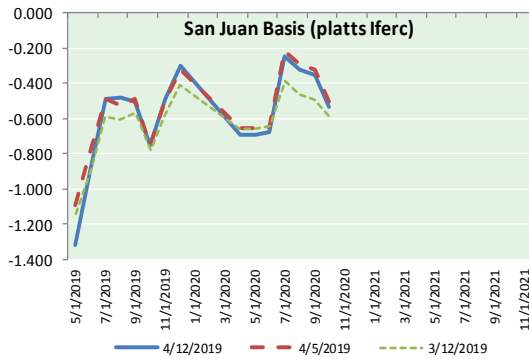
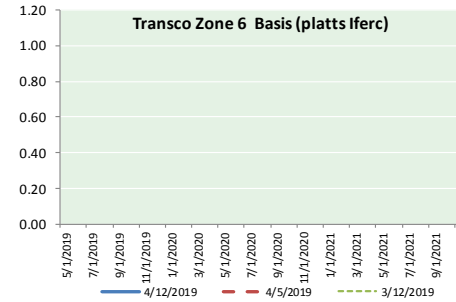
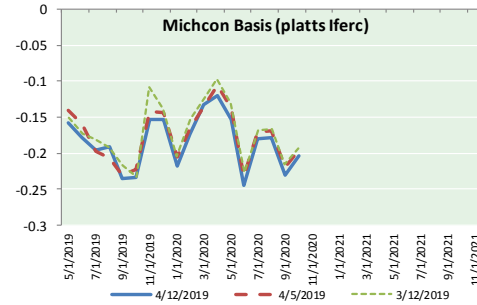
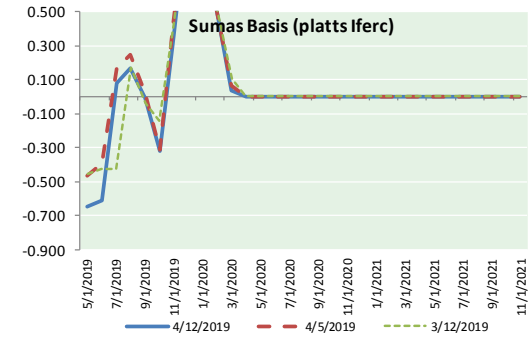
24 HOUR PRECIPITATION





NATURAL GAS NEWS

NATURAL GAS BASIS FUTURES, HENRY HUB SPOT PRICES, AND FORWARD CURVE



NYMEX WTI Delivery Month Average (\$/bbl) (Excluding Weekends and Holidays)

Month: April 2019

Day	Price	Day	Price
1	61.59	16	
2	62.58	17	
3	62.46	18	
4	62.10	19	
5	63.08	20	
6		21	
7		22	
8	64.40	23	
9	63.98	24	
10	64.61	25	
11	63.58	26	
12	63.89	27	
13		28	
14		29	
15		30	

Average (Apr) 63.2270
(through 04/12/2019)

Average (Mar) 58.1681

Average (Feb) 55.0360

CME NG Option Prices

ATM Call

Month	Strike	Close	Imp Vol
Jun-19			
Jul-19	2.650	0.105	28.1
Aug-19			
Sep-19			
Oct-19			

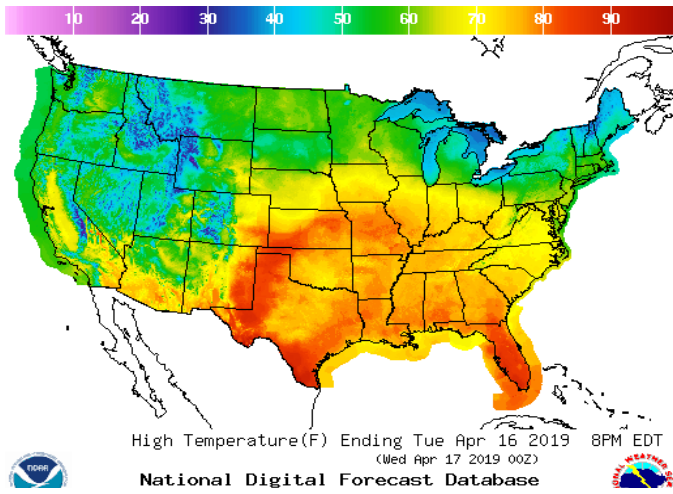
CME NG Option Prices

ATM Put

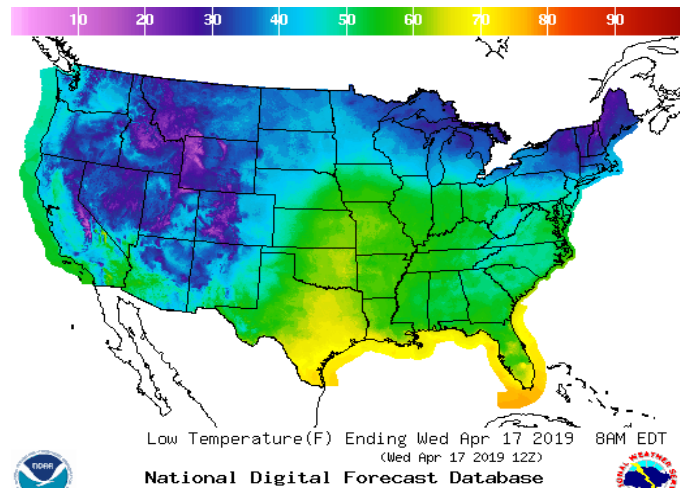
Month	Strike	Close	Imp Vol
Jun-19			
Jul-19	2.650	0.073	20.6
Aug-19			
Sep-19			
Oct-19			

WEATHER – HIGH / LOW TEMPERATURE TOMORROW

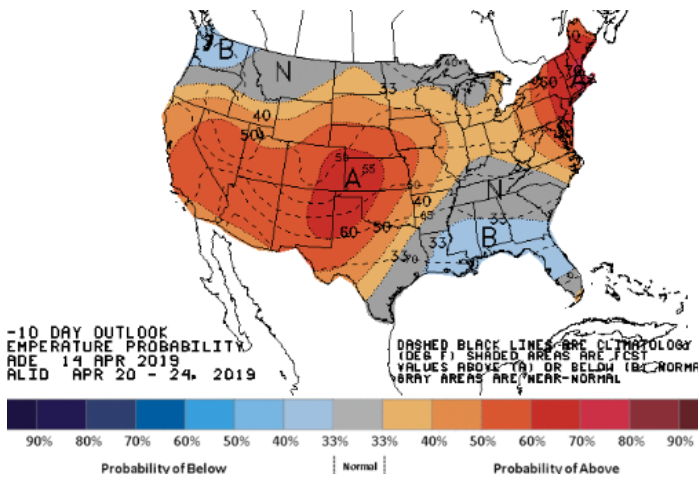
HIGH Temperature



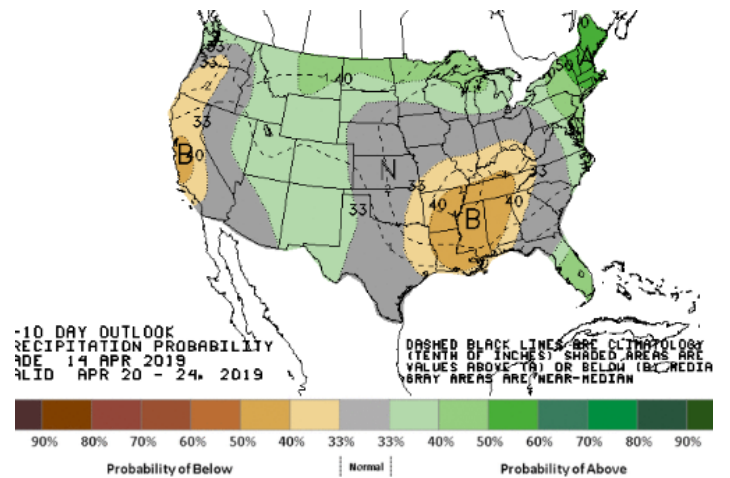
LOW Temperature



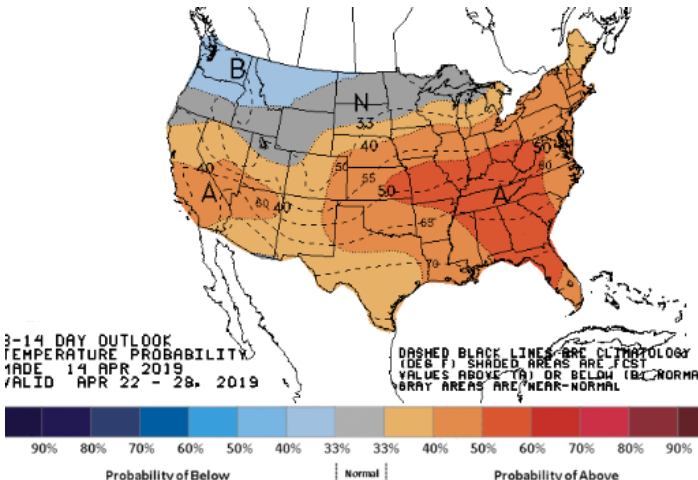
WEATHER – 6 TO 10 DAY OUTLOOK – NOAA
Temperature



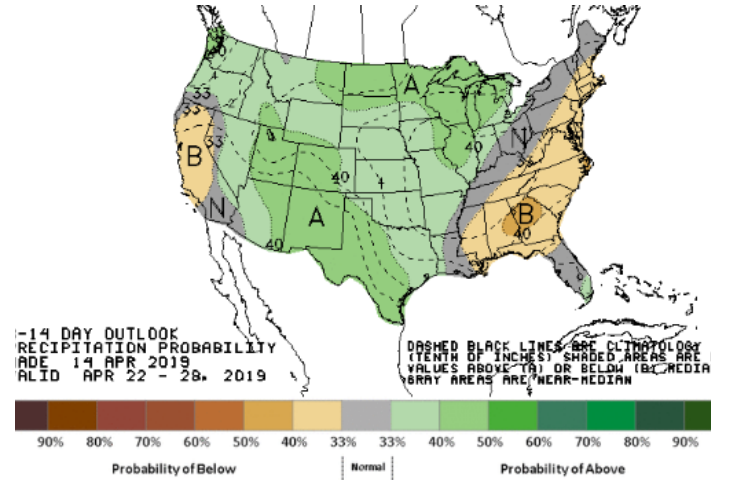
Precipitation



WEATHER – 8 TO 14 DAY OUTLOOK – NOAA
Temperature

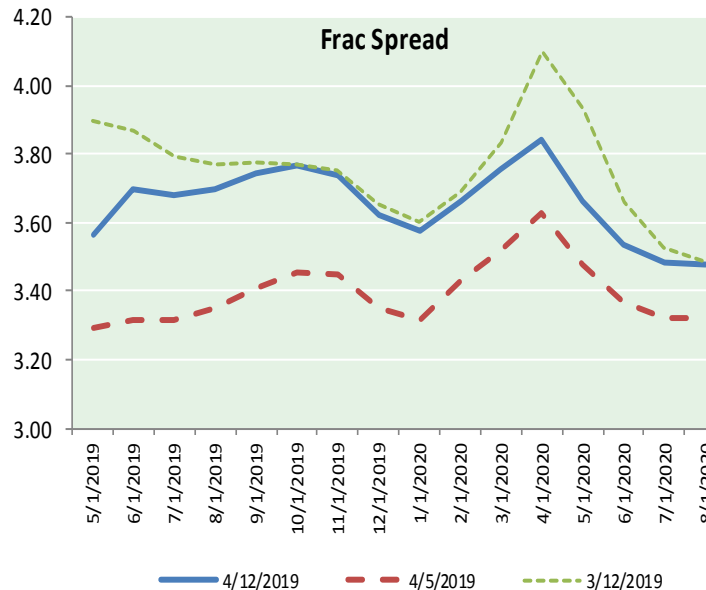
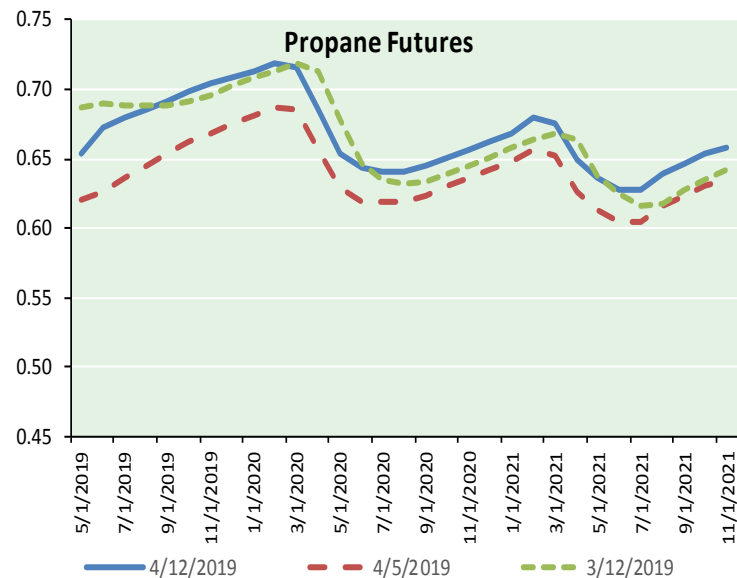
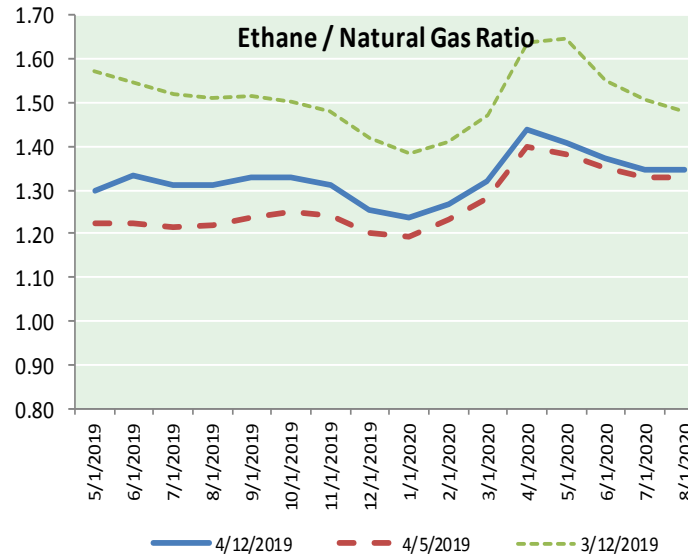
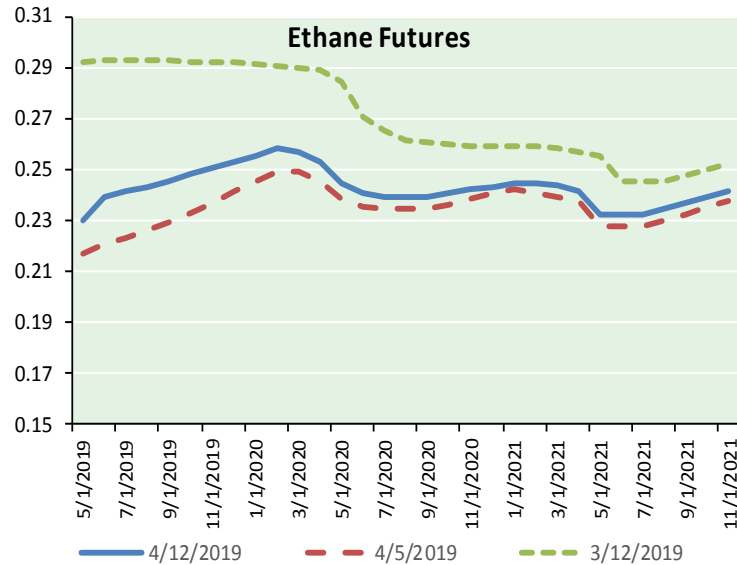


Precipitation





ETHANE FUTURES, NG/ETHANE RATIO, PROPANE FUTURES, AND THE FRAC SPREAD



CME Future Prices

Month	Close	Change
May-19	0.230	(0.006)
Jun-19	0.239	(0.009)
Jul-19	0.241	(0.008)
Aug-19	0.243	(0.006)
Sep-19	0.246	(0.006)
Oct-19	0.248	(0.006)
Nov-19	0.251	(0.006)
Dec-19	0.253	(0.006)
Jan-20	0.256	(0.006)
Feb-20	0.258	(0.005)
Mar-20	0.257	(0.006)
Apr-20	0.253	(0.006)
1YR Strip	0.248	(0.006)

CME Future Prices

Propane (C3)
Non-LDH— Mont Belvieu

Month	Close	Change
May-19	0.654	(0.002)
Jun-19	0.673	(0.005)
Jul-19	0.680	(0.004)
Aug-19	0.686	(0.004)
Sep-19	0.692	(0.003)
Oct-19	0.698	(0.003)
Nov-19	0.704	(0.003)
Dec-19	0.709	(0.003)
Jan-20	0.714	(0.003)
Feb-20	0.719	(0.003)
Mar-20	0.716	(0.003)
Apr-20	0.685	(0.002)
1YR Strip	0.694	(0.003)



NATURAL GAS NEWS

Prompt WTI (CL) Crude
Daily Sentiment

BULLISH



RESISTANCE
64.86 & 65.10
SUPPORT
64.21 & 63.80

FOLLOW US ON TWITTER:



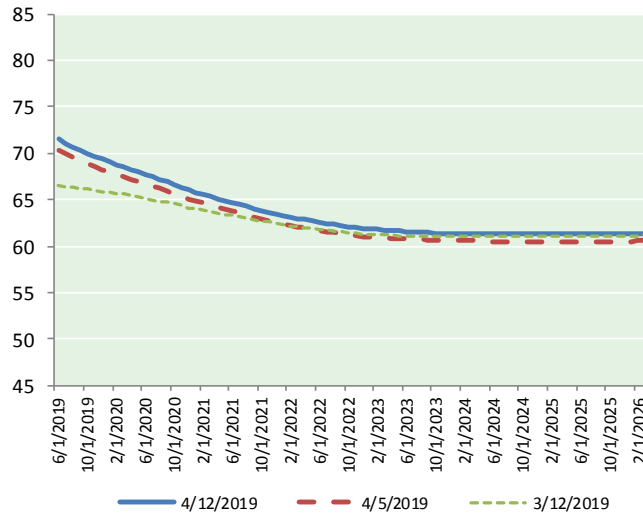
@MPG_NatGasNews

NYMEX Brent (BZ)

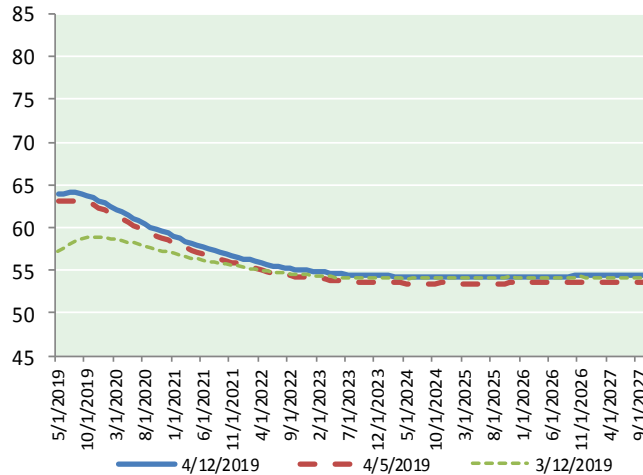
Futures

Month	Close	Change
May-19	63.89	0.31
Jun-19	64.02	0.35
Jul-19	64.10	0.37
Aug-19	64.08	0.39
Sep-19	63.96	0.38
Oct-19	63.76	0.38
Nov-19	63.51	0.38
Dec-19	63.21	0.37
Jan-20	62.87	0.36
Feb-20	62.51	0.34
Mar-20	62.15	0.35
Apr-20	61.78	0.34
May-20	61.43	0.33
Jun-20	61.11	0.32
Jul-20	60.75	0.32
Aug-20	60.42	0.32
Sep-20	60.10	0.31
Oct-20	59.80	0.30
Nov-20	59.55	0.30
Dec-20	59.32	0.30
Jan-21	59.00	0.29
Feb-21	58.70	0.29
Mar-21	58.43	0.30
Apr-21	58.17	0.30
1YR Strip	63.32	0.36
2019	63.82	0.37
5YR Strip	57.79	0.40

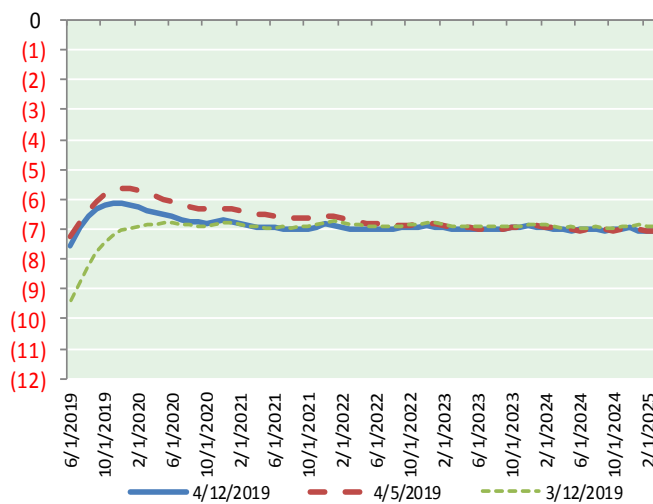
BRENT CRUDE FORWARD CURVE



WTI CRUDE FORWARD CURVE



WTI-BRENT SPREAD



FRAC Spread

Specifications

Ethane : 42% 66,500 btu/g
Propane: 28% 90,830 btu/g
Butane: 11% 102,916 btu/g
Iso-Butane: 6% 98,935 btu/g
Natural Gasoline: 13%
115,021 btu/g

Prompt NGL Futures

	May-19	Close	Change
Butane	0.763	(0.004)	
Iso-Butane	0.771	(0.004)	
Nat Gasoline	1.304	0.004	

NYMEX WTI (CL) Futures

Month	Close	Change
Jun-19	71.55	0.72
Jul-19	71.06	0.66
Aug-19	70.65	0.62
Sep-19	70.28	0.59
Oct-19	69.94	0.57
Nov-19	69.66	0.56
Dec-19	69.36	0.55
Jan-20	69.06	0.54
Feb-20	68.77	0.52
Mar-20	68.50	0.50
Apr-20	68.22	0.48
May-20	67.95	0.48
Jun-20	67.66	0.47
Jul-20	67.41	0.46
Aug-20	67.15	0.45
Sep-20	66.88	0.44
Oct-20	66.61	0.44
Nov-20	66.31	0.44
Dec-20	66.02	0.43
Jan-21	65.78	0.41
Feb-21	65.54	0.39
Mar-21	65.32	0.39
Apr-21	65.11	0.40
May-21	64.90	0.40
1YR Strip	69.58	0.57
2019	70.36	0.61
5YR Strip	64.44	0.45