

NATURAL GAS



APRIL 13, 2018

Prior Day's NYMEX Jan-18 Contract (CT)



NYMEX NG Futures

Month	Close	Change
May-18	2.686	0.011
Jun-18	2.717	0.008
Jul-18	2.761	0.004
Aug-18	2.782	0.003
Sep-18	2.776	0.003
Oct-18	2.790	0.003
Nov-18	2.841	0.004
Dec-18	2.973	0.003
Jan-19	3.060	0.004
Feb-19	3.026	0.004
Mar-19	2.923	0.005
Apr-19	2.679	0.013
May-19	2.647	0.011
Jun-19	2.674	0.011
Jul-19	2.705	0.011
Aug-19	2.711	0.012
Sep-19	2.698	0.011
Oct-19	2.726	0.011
Nov-19	2.783	0.010
Dec-19	2.914	0.010
Jan-20	3.016	0.009
Feb-20	2.993	0.009
Mar-20	2.902	0.007
Apr-20	2.657	0.007
1YR Strip	2.835	0.005
2018	2.791	0.005
5YR Strip	2.832	0.011

IN THE NEWS

ExxonMobil Resumes Liquefied Natural Gas Production in Papua New Guinea— Business Wire reported: ExxonMobil said today that production of liquefied natural gas (LNG) has safely resumed at the PNG LNG project in Papua New Guinea following a temporary shutdown of operations after a severe earthquake occurred in the region on Feb. 26. LNG exports are expected to resume

- **ExxonMobil Resumes Liquefied Natural Gas Production in Papua New Guinea**
- **Commodities - Natural Gas Futures Turn Higher After Storage**

soon. One train is currently operating at the LNG plant near Port Moresby. The plant's second train is expected to restart as production is increased over time. During the period that production was shut-in, ExxonMobil was able to complete unrelated maintenance scheduled for later in the year to allow for more efficient operations in the months ahead. "Resuming LNG production ahead of our projected eight-week timeframe is a significant achievement for ExxonMobil, our joint-venture partners and our customers," said Neil W. Duffin, president of ExxonMobil Production Company. "We will continue to support those communities impacted by the earthquake as we work toward fully restoring our operations. We hope our contributions and assistance will provide comfort to those in need." For more on this story visit [business-wire.com](https://bit.ly/2GVF63p) or click <https://bit.ly/2GVF63p>

Commodities - Natural Gas Futures Turn Higher After Storage Data— Investing.com reported: The U.S. Energy Information Administration said in its weekly report that natural gas storage in the U.S. fell by 19 billion cubic feet in the week ended April 6, compared to forecasts for a decline of 11 billion. Thursday's data compared with a draw of 29 billion cubic feet (bcf) in the preceding week and represented a decline of 725 billion from a year earlier and was also 375 bcf below the five-year average. Total U.S. natural gas storage stood at 1.335 trillion cubic feet, 35.2% lower than levels at this time a year ago and also 21.9% below the five-year average for this time of year. For more on this story visit [investing.com](https://bit.ly/2JlknxV) or click <https://bit.ly/2JlknxV>

12 MONTH CANDLESTICK (WEEKLY)



Prompt Natural Gas (NG) Daily Sentiment

BEARISH



RESISTANCE

2.71 & 2.73

SUPPORT

2.66 & 2.63

Trading Summary

NATURAL GAS

Futures	Close	Change
NG	2.686	0.011
Volume	501,987	(16,143)
Open Int.	1,476,034	(8,450)

CRUDE AND GASOLINE

Futures	Close	Change
Crude	67.07	0.25
RBOB	2.0546	(0.0130)
Crude/NG	24.97	(0.01)

METALS

Futures	Close	Change
Gold	1,338.40	2.10

EQUITIES

Exchange	Close	Change
DOW	24,483.05	293.60
S&P 500	-550.29	21.80

CURRENCY

Currency	Close	Change
EUR/USD	1.2318	(0.0009)
USD/CND	1.2405	(0.0026)

Contact Us



Mansfield Energy Corp
1025 Airport Pkwy
Gainesville, GA 30501

www.mansfield.energy

info@mansfieldoil.com

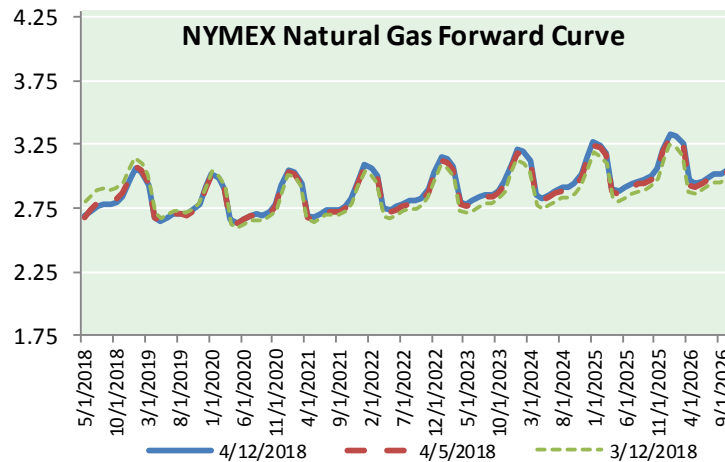
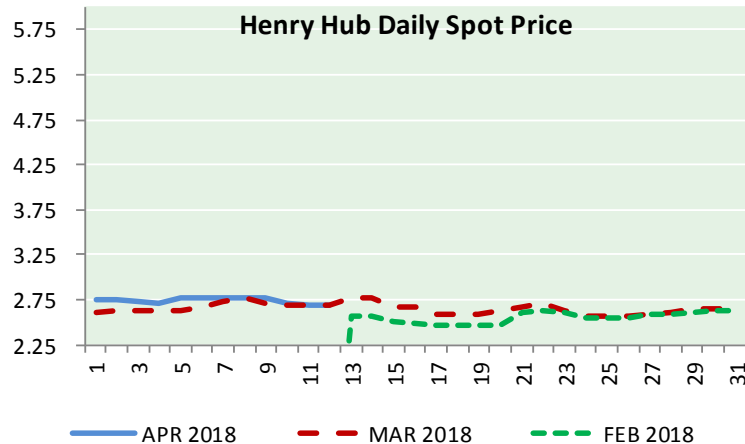
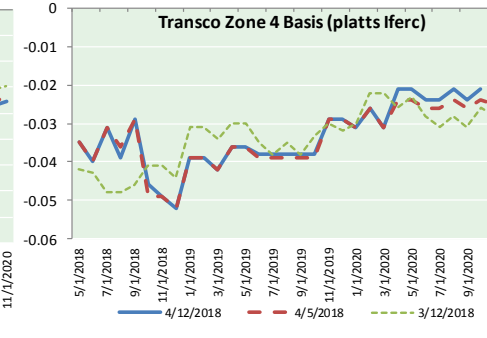
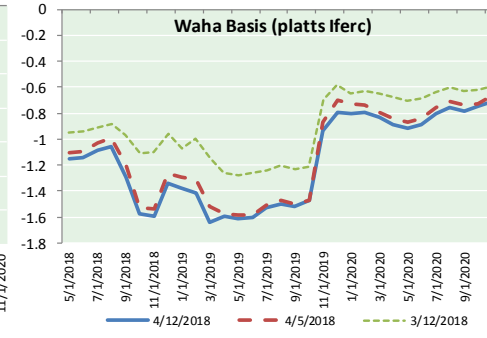
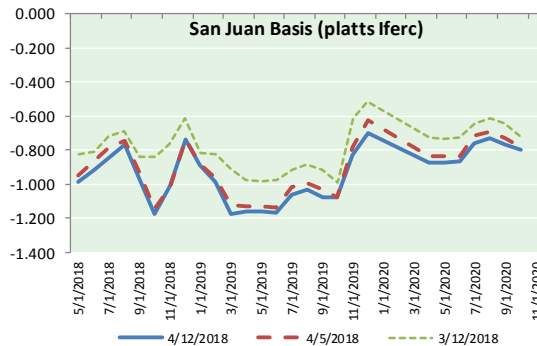
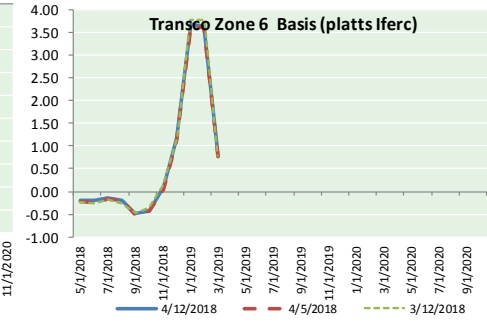
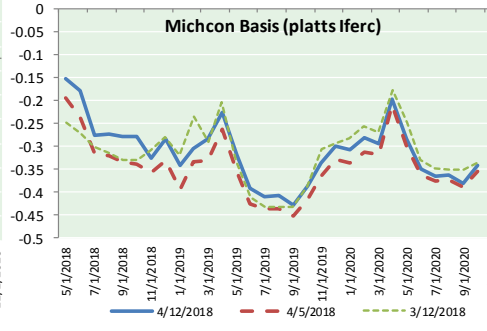
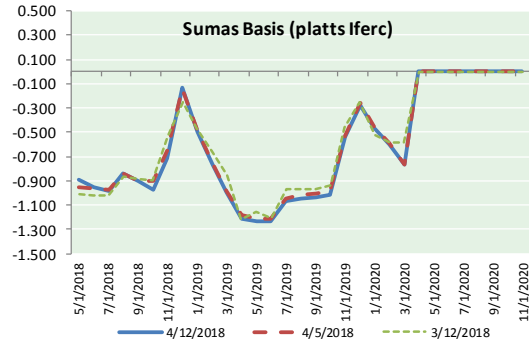
Phone: (800) 695-6626





NATURAL GAS NEWS

NATURAL GAS BASIS FUTURES, HENRY HUB SPOT PRICES, AND FORWARD CURVE



NYMEX WTI Delivery

Month Average (\$/bbl)

(Excluding Weekends and Holidays)

Month: April 2018

Day	Price	Day	Price
1		16	
2	63.01	17	
3	63.51	18	
4	63.37	19	
5	63.54	20	
6	62.06	21	
7		22	
8		23	
9	63.42	24	
10	65.51	25	
11	66.82	26	
12	67.07	27	
13		28	
14		29	
15		30	

Average (Apr) 64.2567
(through 04/12/2018)

Average (Mar) 62.7719

Average (Feb) 62.1837

CME NG Option Prices

ATM Call

Month	Strike	Close	Imp	Vol
Jun-18				
Jul-18	2.750	0.068		20.6
Aug-18				
Sep-18				
Oct-18				

CME NG Option Prices

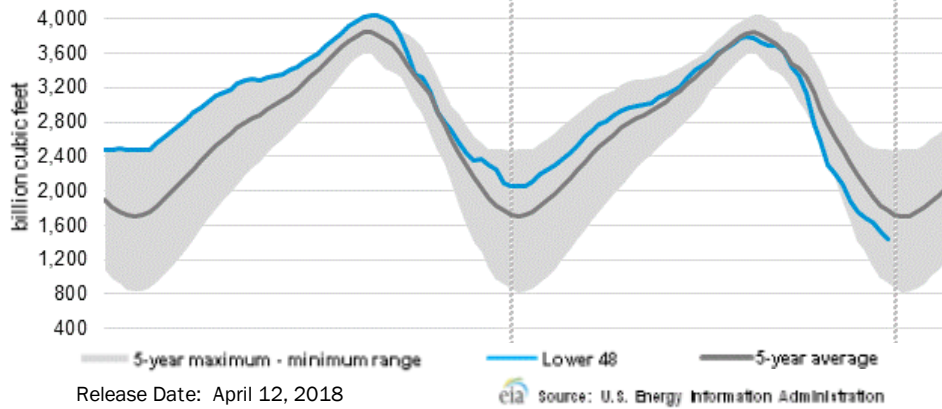
ATM Put

Month	Strike	Close	Imp	Vol
Jun-18				
Jul-18	2.750	0.101		24.3
Aug-18				
Sep-18				
Oct-18				



NATURAL GAS NEWS

WEEKLY GAS IN UNDERGROUND STORAGE WITH 5-YR RANGE



Rig Count

Report Date: April 6, 2018

	Total	Change
US -	1003	+10
CN -	111	(23)

EIA Weekly NG Storage Actual and Surveys for April 11, 2018

Released April 12, 2018

Range (13) to (25)

PIRA – (10)

Citi Futures – (24)

Reuters – (17)

EIA ACTUAL – (19)

Total Working Gas In Storage

1,335 BCF

(19) BCF (LAST WEEK)

(725) BCF (LAST YEAR)

(375) BCF (5-YR AVG)

U.S. Natural Gas Supply Gas Week 4/5– 4/11

Average daily values (BCF/D):

Last Year (BCF/d)

Dry Production – +72.0

Total Supply – +77.4

Last Week (BCF/d)

Dry Production – +79.9

Total Supply – +86.3

[NEXT REPORT ON Apr 19]

U.S. Natural Gas Demand Gas Week 4/5– 4/11

Average daily values (BCF/D):

Last Year (BCF/d)

Power – +21.8

Total Demand – +72.3

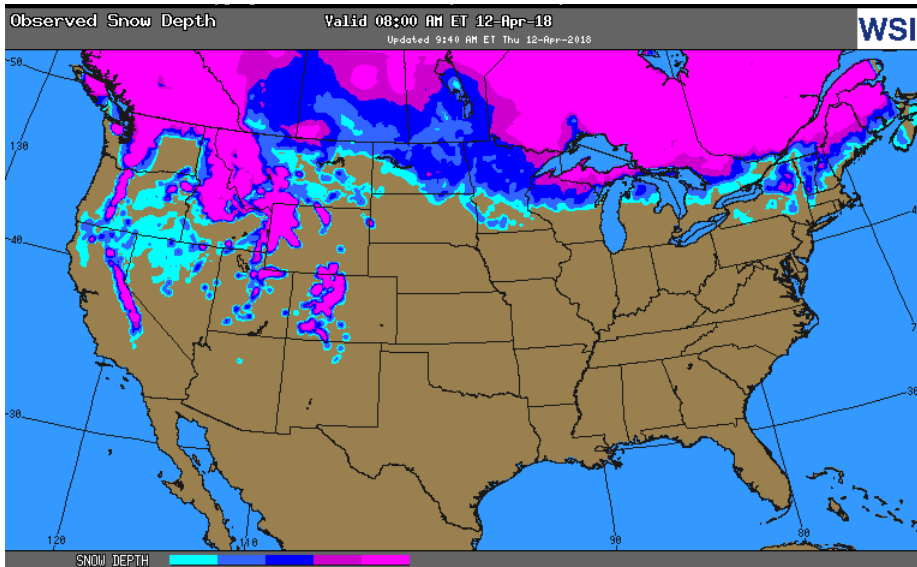
Last Week (BCF/d)

Power – +22.8

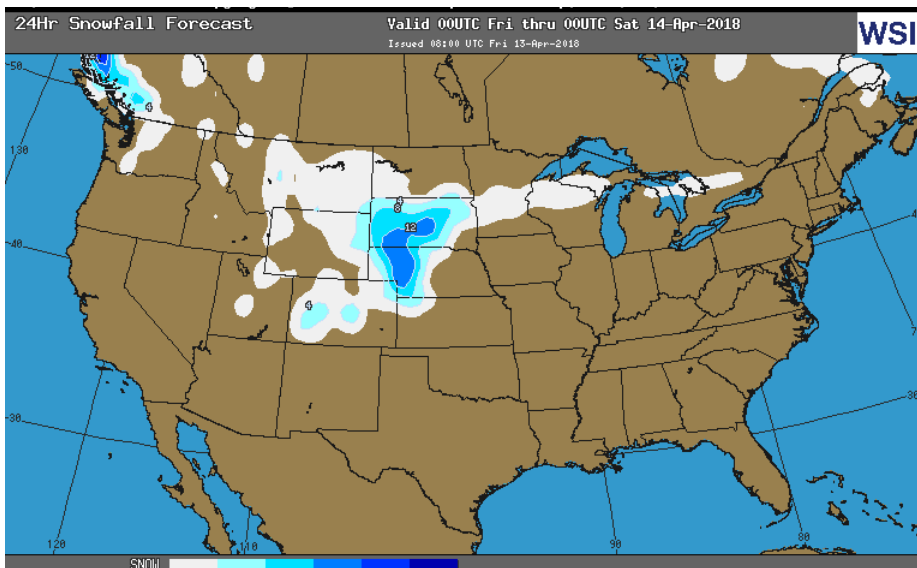
Total Demand – +83.9

[NEXT REPORT ON Apr 19]

OBSERVED SNOW DEPTH

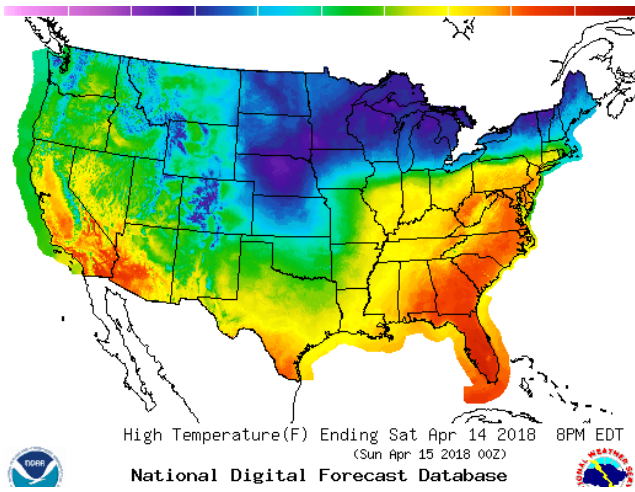


24 HOUR SNOWFALL FORECAST

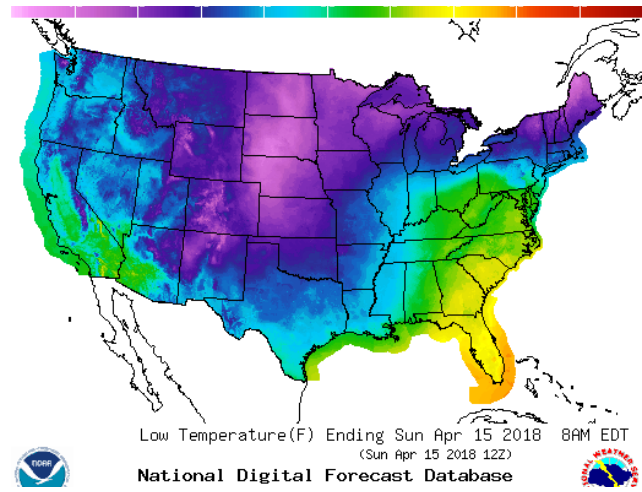


WEATHER – HIGH / LOW TEMPERATURE SATURDAY

HIGH Temperature

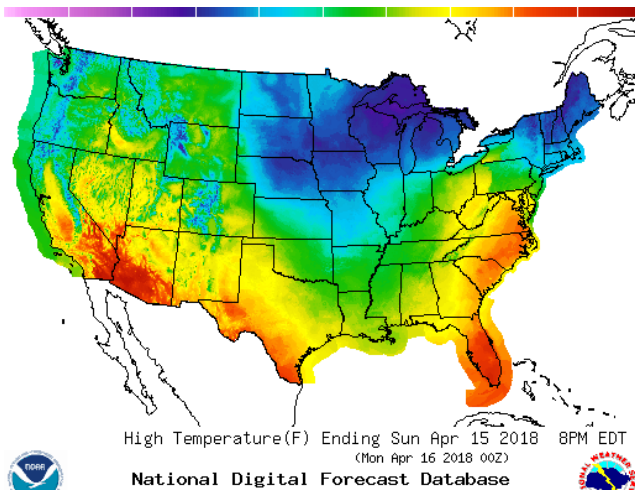


LOW Temperature

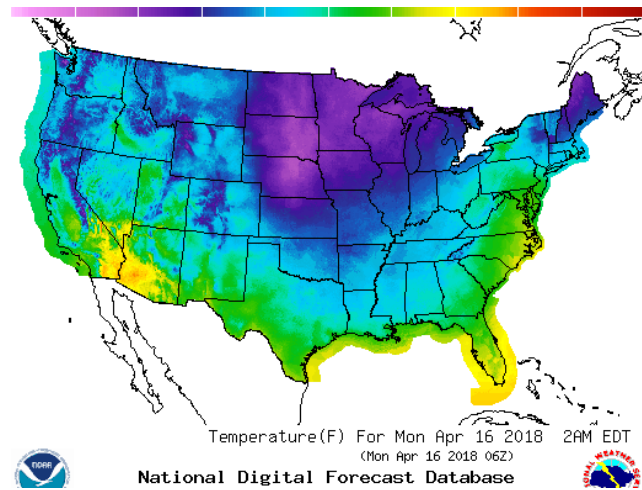


WEATHER – HIGH / LOW TEMPERATURE SUNDAY

HIGH Temperature

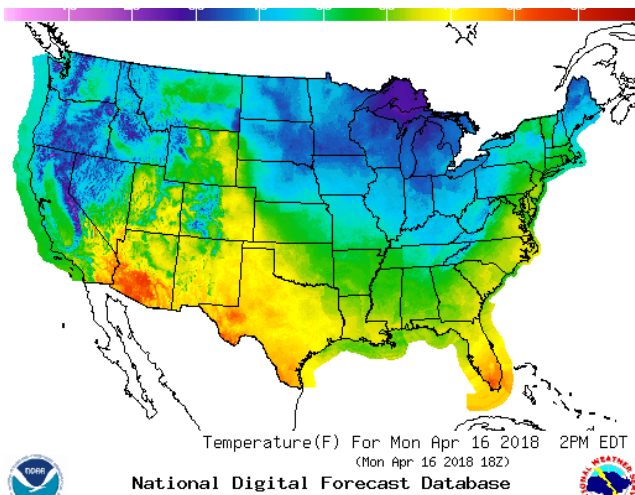


LOW Temperature

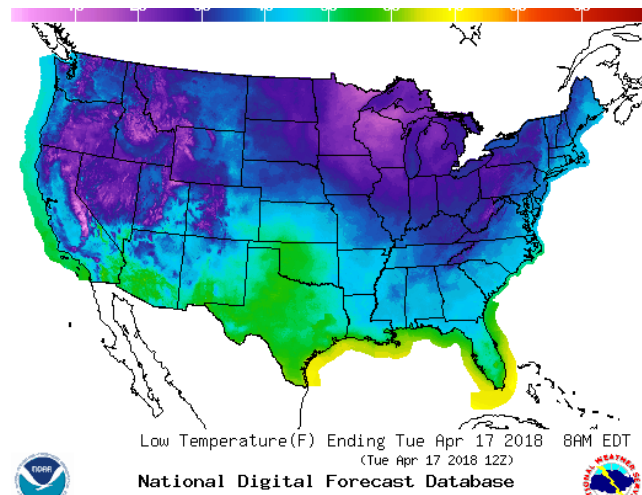


WEATHER – HIGH / LOW TEMPERATURE MONDAY

HIGH Temperature



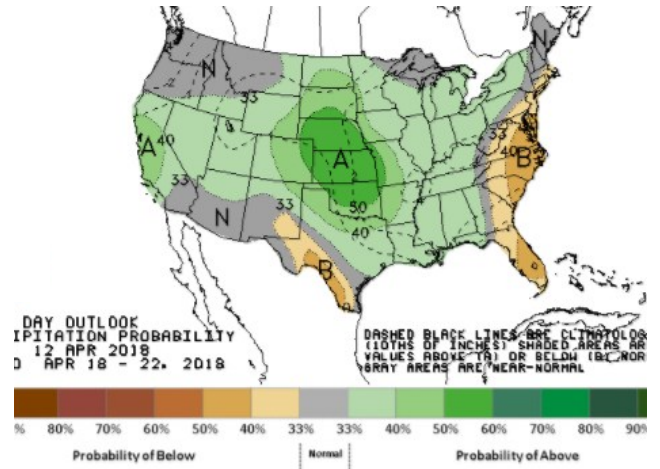
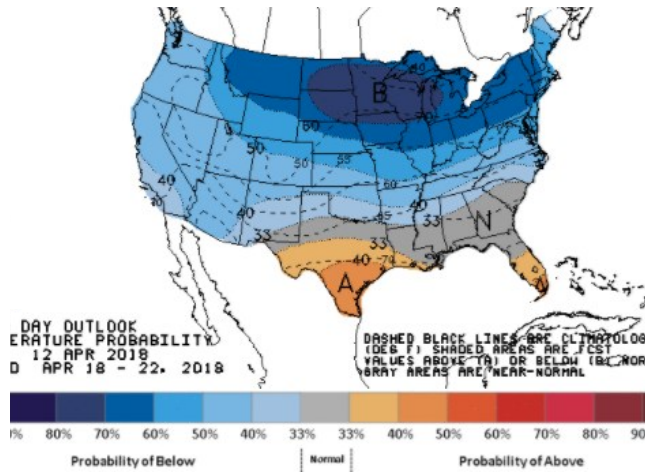
LOW Temperature



WEATHER — 6 TO 10 DAY OUTLOOK — NOAA

Temperature

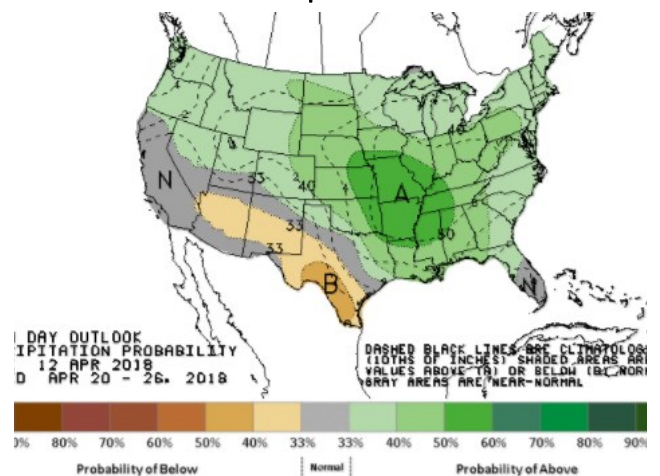
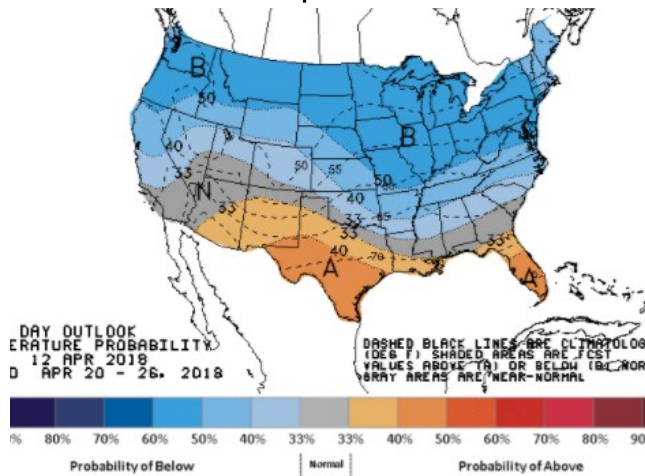
Precipitation



WEATHER — 8 TO 14 DAY OUTLOOK — NOAA

Temperature

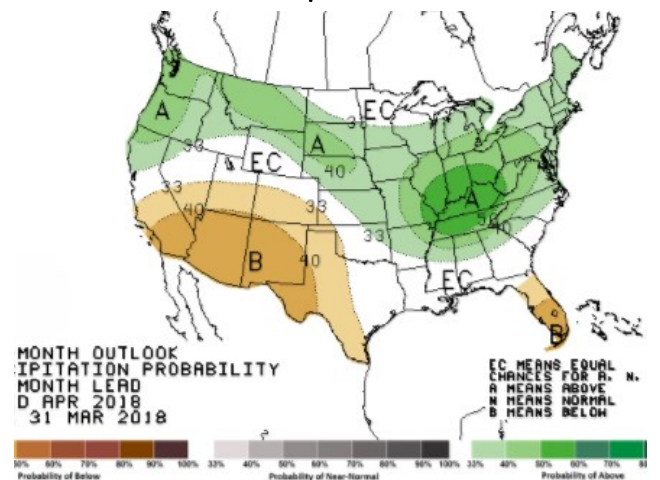
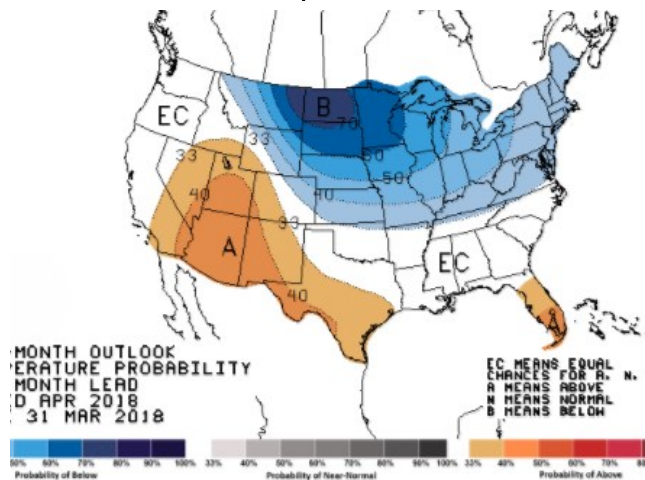
Precipitation



WEATHER — 30 DAY OUTLOOK — NOAA

Temperature

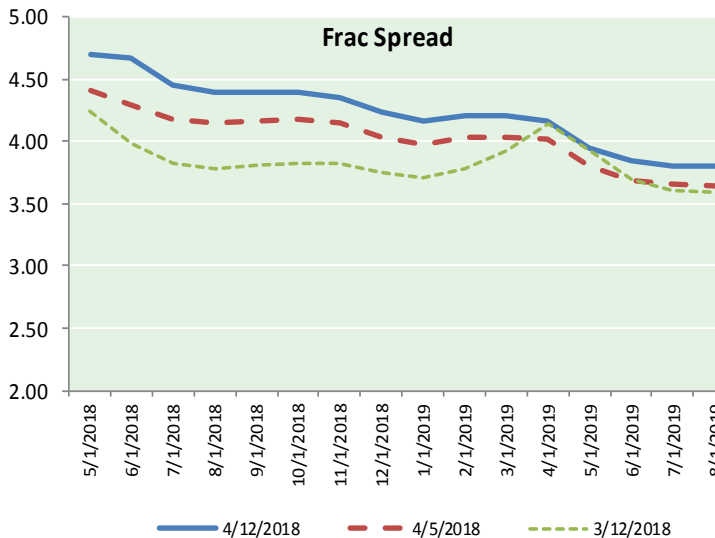
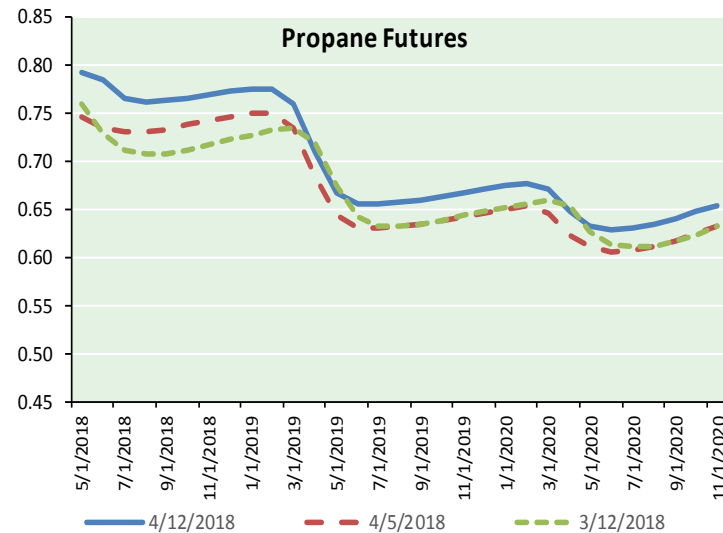
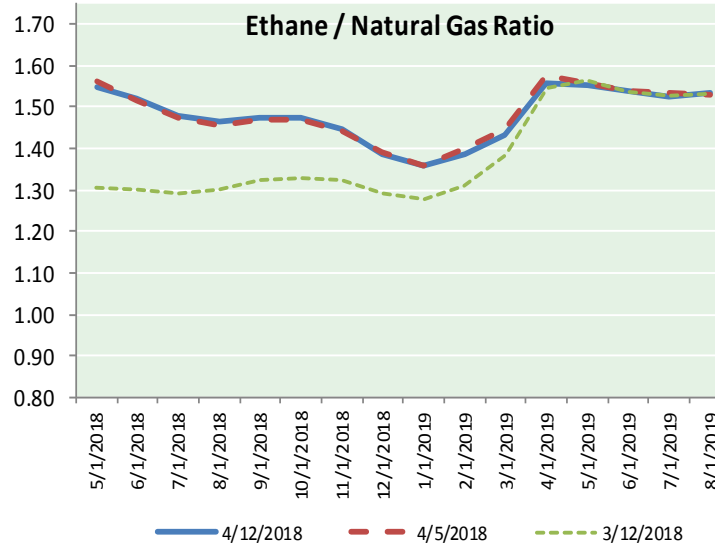
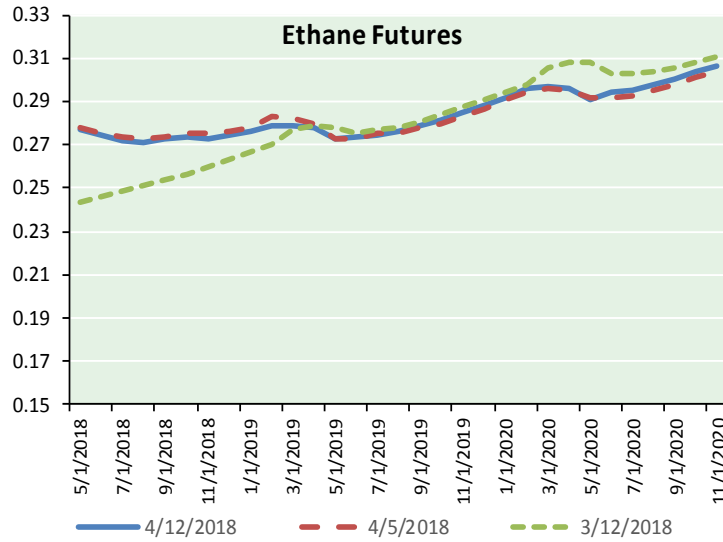
Precipitation





NATURAL GAS NEWS

ETHANE FUTURES, NG/ETHANE RATIO, PROPANE FUTURES, AND THE FRAC SPREAD



CME Future Prices

Ethane (C2)

Non-LDH— Mont Belvieu

Month	Close	Change
May-18	0.277	0.000
Jun-18	0.274	0.001
Jul-18	0.272	0.001
Aug-18	0.271	0.001
Sep-18	0.273	0.001
Oct-18	0.274	0.001
Nov-18	0.273	0.001
Dec-18	0.274	0.001
Jan-19	0.276	0.002
Feb-19	0.279	0.002
Mar-19	0.279	0.002
Apr-19	0.278	0.002

1YR Strip 0.275 0.001

CME Future Prices

Propane (C3)

Non-LDH— Mont Belvieu

Month	Close	Change
May-18	0.792	0.000
Jun-18	0.786	0.004
Jul-18	0.767	(0.005)
Aug-18	0.763	(0.005)
Sep-18	0.763	(0.005)
Oct-18	0.767	(0.005)
Nov-18	0.771	(0.005)
Dec-18	0.774	(0.006)
Jan-19	0.776	(0.006)
Feb-19	0.775	(0.006)
Mar-19	0.760	(0.006)
Apr-19	0.709	(0.006)

1YR Strip 0.767 (0.004)

NATURAL GAS NEWS



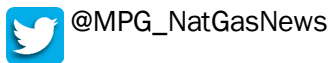
Prompt WTI (CL) Crude Daily Sentiment

BULLISH



RESISTANCE
67.60 & 68.13
SUPPORT
66.27 & 65.47

FOLLOW US ON TWITTER:

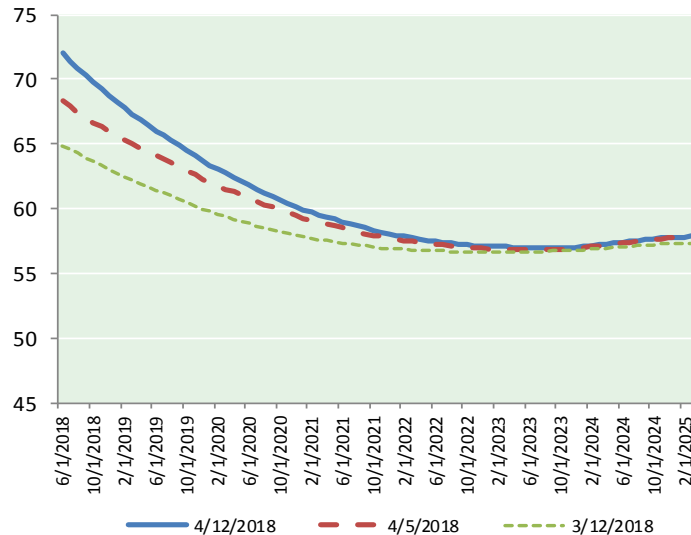


NYMEX Brent (BZ)

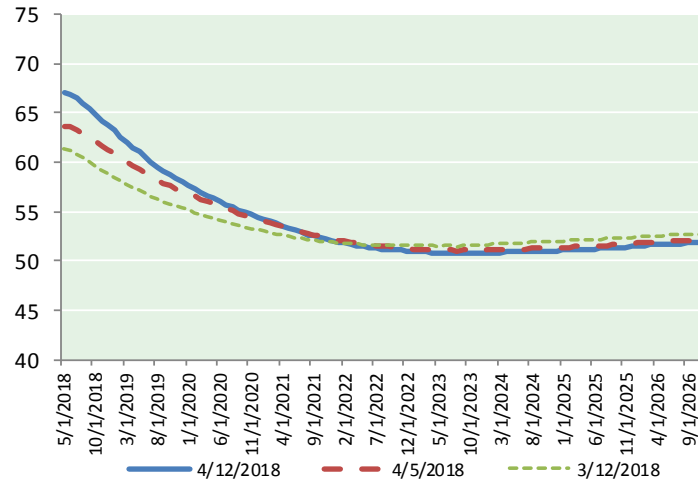
Futures

Month	Close	Change
Jun-18	72.02	(0.04)
Jul-18	71.40	(0.06)
Aug-18	70.85	(0.08)
Sep-18	70.30	(0.12)
Oct-18	69.74	(0.16)
Nov-18	69.22	(0.19)
Dec-18	68.72	(0.22)
Jan-19	68.25	(0.25)
Feb-19	67.80	(0.26)
Mar-19	67.34	(0.28)
Apr-19	66.90	(0.29)
May-19	66.45	(0.31)
Jun-19	66.02	(0.32)
Jul-19	65.64	(0.35)
Aug-19	65.26	(0.36)
Sep-19	64.87	(0.36)
Oct-19	64.49	(0.37)
Nov-19	64.13	(0.37)
Dec-19	63.72	(0.38)
Jan-20	63.37	(0.39)
Feb-20	63.07	(0.40)
Mar-20	62.76	(0.40)
Apr-20	62.45	(0.41)
May-20	62.15	(0.43)
1YR Strip	69.08	(0.19)
2018	70.32	(0.12)
5YR Strip	61.59	(0.40)

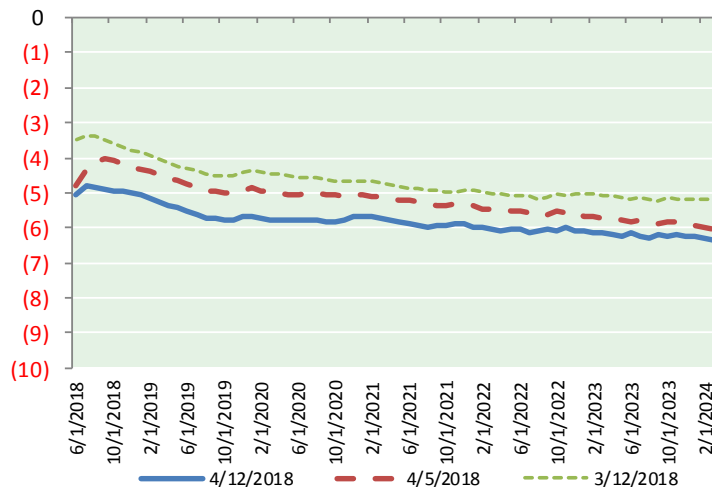
BRENT CRUDE FORWARD CURVE



WTI CRUDE FORWARD CURVE



WTI-BRENT SPREAD



FRAC Spread

Specifications

Ethane :	42%	66,500 btu/g
Propane :	28%	90,830 btu/g
Butane :	11%	102,916 btu/g
Iso-Butane :	6%	98,935 btu/g
Natural Gasoline :	13%	115,021 btu/g

Prompt NGL Futures

(\$/gallon)

	May-18	Close	Change
Butane	0.894	0.894	(0.000)
Iso-Butane	0.894	0.894	(0.001)
Nat Gasoline	1.506	1.506	(0.013)

NYMEX WTI (CL) Futures

Month	Close	Change
May-18	67.07	0.25
Jun-18	66.95	0.21
Jul-18	66.58	0.14
Aug-18	66.01	0.10
Sep-18	65.40	0.06
Oct-18	64.80	0.03
Nov-18	64.25	0.01
Dec-18	63.72	0.00
Jan-19	63.20	(0.01)
Feb-19	62.62	(0.04)
Mar-19	62.06	(0.05)
Apr-19	61.52	(0.09)
May-19	61.01	(0.11)
Jun-19	60.51	(0.14)
Jul-19	60.01	(0.16)
Aug-19	59.54	(0.18)
Sep-19	59.12	(0.18)
Oct-19	58.73	(0.18)
Nov-19	58.36	(0.19)
Dec-19	58.05	(0.19)
Jan-20	57.67	(0.19)
Feb-20	57.32	(0.19)
Mar-20	56.98	(0.20)
Apr-20	56.66	(0.20)
1YR Strip	64.52	0.05
2018	65.60	0.10
5YR Strip	56.13	(0.19)