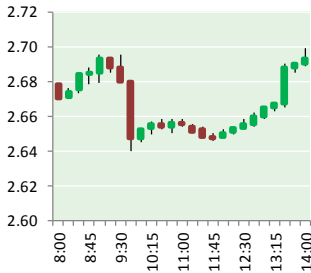


# NATURAL GAS



APRIL 10, 2018

## Prior Day's NYMEX May-18 Contract (CT)



## NYMEX NG Futures

Month	Close	Change
May-18	2.693	(0.008)
Jun-18	2.731	(0.016)
Jul-18	2.780	(0.024)
Aug-18	2.802	(0.023)
Sep-18	2.794	(0.022)
Oct-18	2.808	(0.021)
Nov-18	2.856	(0.020)
Dec-18	2.985	(0.018)
Jan-19	3.070	(0.018)
Feb-19	3.036	(0.017)
Mar-19	2.930	(0.015)
Apr-19	2.665	(0.001)
May-19	2.639	0.002
Jun-19	2.666	0.002
Jul-19	2.695	0.002
Aug-19	2.699	0.002
Sep-19	2.686	0.004
Oct-19	2.713	0.004
Nov-19	2.769	0.004
Dec-19	2.899	0.005
Jan-20	3.002	0.006
Feb-20	2.979	0.005
Mar-20	2.891	0.003
Apr-20	2.641	0.003
1YR Strip	2.846	(0.017)
2018	2.806	(0.019)
5YR Strip	2.814	(0.005)

## IN THE NEWS

Duke Energy commissions 750MW combined-cycle natural gas plant in South Carolina— Fossil Fuel Energy Business Review reported: Duke Energy commissioned a new 750MW combined-cycle natural gas plant at the existing W.S. Lee Station in Anderson County, South Carolina, US. The power plant, construction of which was started in March 2015, is part of the company's balanced approach to modernizing the fleet and maintaining a diverse fuel portfolio. The firm closed two coal-fired units at the W.S. Lee Station in 2014 while the third coal unit was converted to natural gas in 2015. Currently, it has no power plants in South Carolina that use coal as fuel. Duke Energy South Carolina state president Kodwo Gharthey-Tagoe said: "Investing in a smarter, more efficient energy future through projects like the new W.S. Lee plant is more than just good business – it's an investment in our state that helps attract jobs and industry and make our economy and communities stronger. "This project represents a long-term commitment to South Carolina – a \$700m investment in the station, environment and surrounding communities." For more on this story visit [fossilfuel.energy-business-review.com](https://bit.ly/2GME1XC) or click <https://bit.ly/2GME1XC>

- **Duke Energy commissions 750MW combined-cycle natural gas plant in South Carolina**
- **China Energy Giant 'Confident' U.S. Energy Ties Set to Deepen**

China Energy Giant 'Confident' U.S. Energy Ties Set to Deepen— Bloomberg reported: The head of China's largest natural gas importer believes the country's energy ties with the U.S. are set to deepen, despite trade conflict between the world's two largest economies that has roiled financial markets. "There is more room for cooperation than confrontation between China and the U.S.," China National Petroleum Corp. Chairman Wang Yilin said Monday in an interview with Bloomberg TV on the tropical island of Hainan, where he was attending the Boao Forum for Asia. "I hope our cooperation with U.S. partners won't be negatively affected by the trade disputes." For more on this story visit [Bloomberg.com](https://bloom.bg/2uZaZ5J) or click <https://bloom.bg/2uZaZ5J>

## 12 MONTH CANDLESTICK (WEEKLY)



## Prompt Natural Gas (NG) Daily Sentiment

**BEARISH**



RESISTANCE  
2.72 & 2.74  
SUPPORT  
2.65 & 2.62

## Trading Summary

### NATURAL GAS

Futures	Close	Change
NG	2.693	(0.008)
Volume	605,807	(439,135)
Open Int.	1,473,441	(17,115)

### CRUDE AND GASOLINE

Futures	Close	Change
Crude	63.42	1.36
RBOB	1.9842	0.0295
Crude/NG	23.55	0.57

### METALS

Futures	Close	Change
Gold	1,336.30	2.70

### EQUITIES

Exchange	Close	Change
DOW	23,979.10	46.34
S&P 500	-46.34	8.69

### CURRENCY

Currency	Close	Change
EUR/USD	1.2357	0.0036
USD/CND	1.2405	(0.0066)

## Contact Us



**Mansfield Energy Corp**  
1025 Airport Pkwy  
Gainesville, GA 30501  
  
www.mansfield.energy  
  
info@mansfieldoil.com

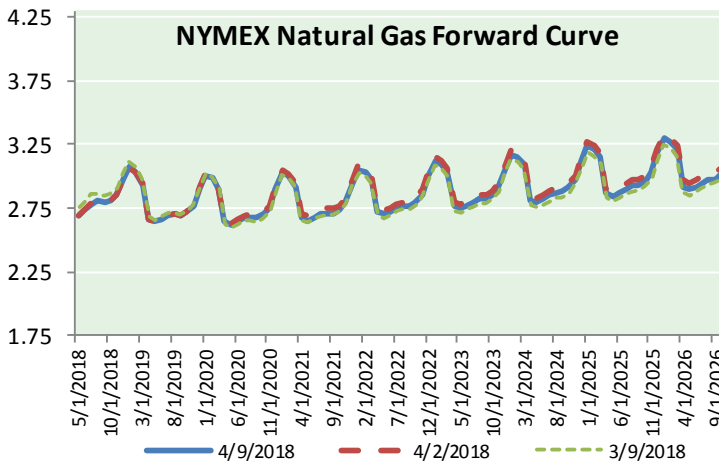
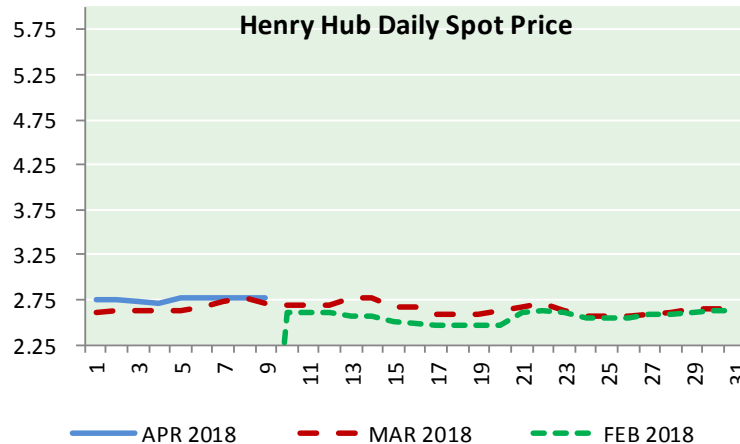
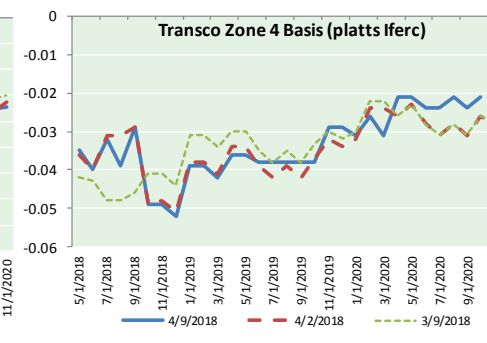
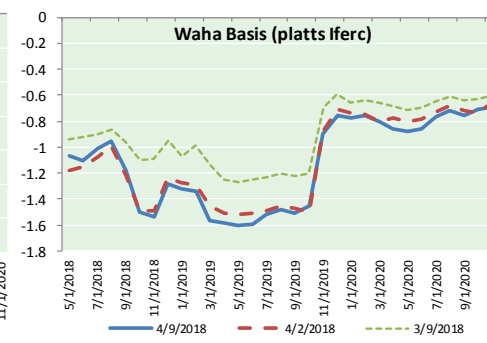
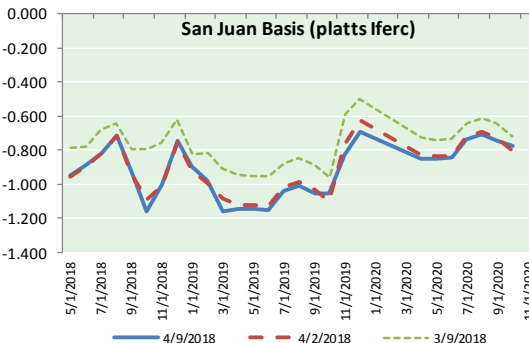
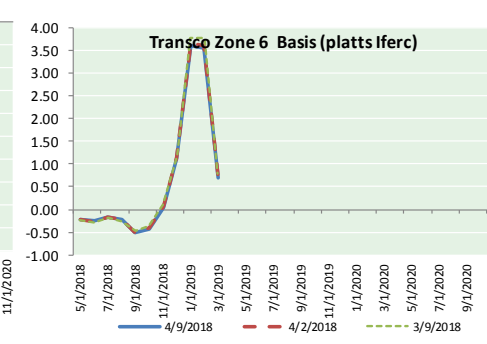
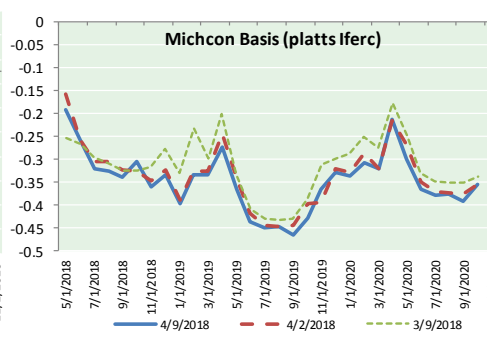
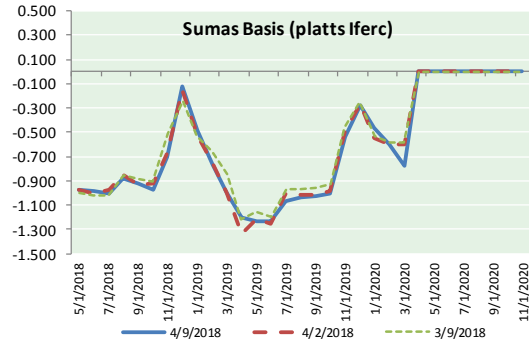
Phone: (800) 695-6626





# NATURAL GAS NEWS

## NATURAL GAS BASIS FUTURES, HENRY HUB SPOT PRICES, AND FORWARD CURVE



### NYMEX WTI Delivery Month Average (\$/bbl) (Excluding Weekends and Holidays)

Month: April 2018

Day	Price	Day	Price
1		16	
2	63.01	17	
3	63.51	18	
4	63.37	19	
5	63.54	20	
6	62.06	21	
7		22	
8		23	
9	63.42	24	
10		25	
11		26	
12		27	
13		28	
14		29	
15		30	

Average (Apr) 63.1517  
(through 04/09/2018)

Average (Mar) 62.7719

Average (Feb) 62.1837

### CME NG Option Prices

#### ATM Call

Month	Strike	Close	Imp Vol
Jun-18			
Jul-18	2.700	0.099	26.2
Aug-18			
Sep-18			
Oct-18			

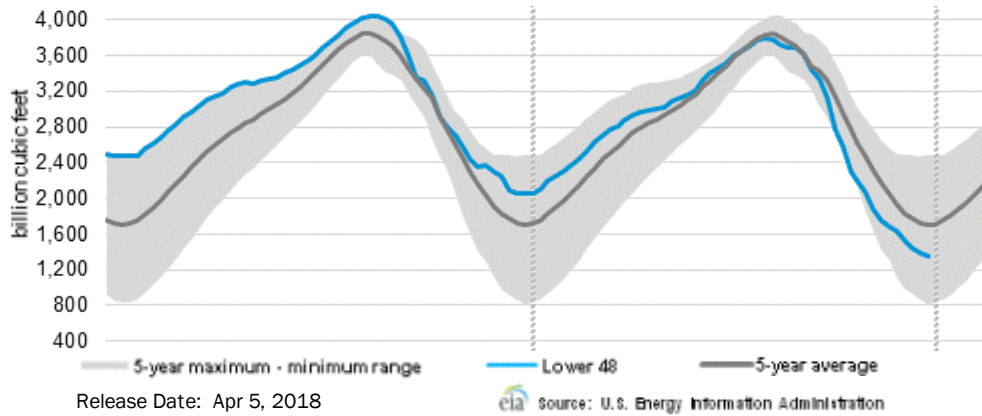
### CME NG Option Prices

#### ATM Put

Month	Strike	Close	Imp Vol
Jun-18			
Jul-18	2.700	0.073	18.7
Aug-18			
Sep-18			
Oct-18			

# NATURAL GAS NEWS

## WEEKLY GAS IN UNDERGROUND STORAGE WITH 5-YR RANGE



## Rig Count

Report Date: April 6, 2018

	Total	Change
US -	1003	+10
CN -	111	(23)

## EIA Weekly NG Storage Actual and Surveys for March 29, 2018

Released April 5, 2018

Range (5) to (25)

PIRA – (25)

ARM – (26)

Reuters – (28)

EIA ACTUAL – (29)

## Total Working Gas In Storage

**1,354 BCF**

(29) BCF (LAST WEEK)

(697) BCF (LAST YEAR)

(347) BCF (5-YR AVG)

## U.S. Natural Gas Supply Gas Week 3/29– 4/4

Average daily values (BCF/D):

Last Year (BCF/d)

Dry Production – +71.2

Total Supply – +77.0

Last Week (BCF/d)

Dry Production – +79.2

Total Supply – +85.9

[NEXT REPORT ON Apr 12]

## U.S. Natural Gas Demand Gas Week 3/29– 4/4

Average daily values (BCF/D):

Last Year (BCF/d)

Power – +22.4

Total Demand – +75.1

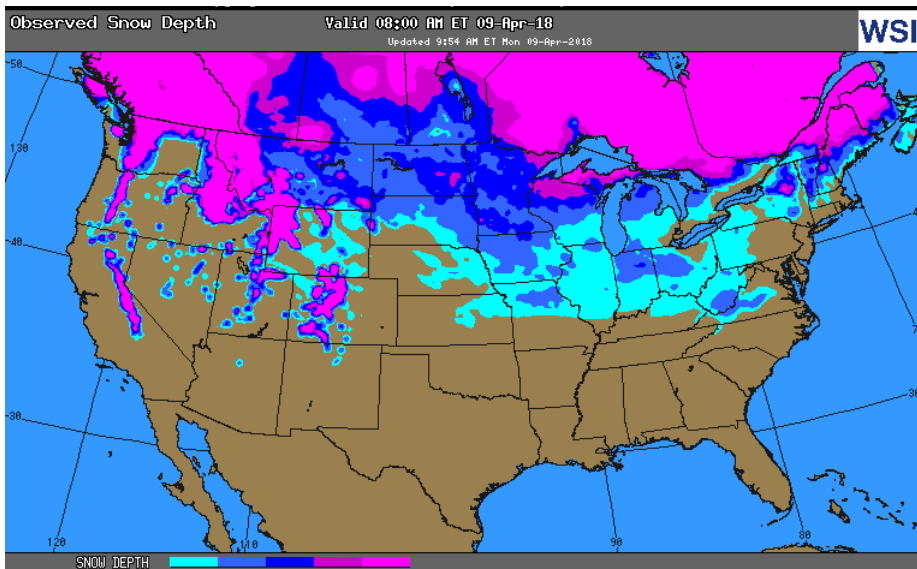
Last Week (BCF/d)

Power – +22.4

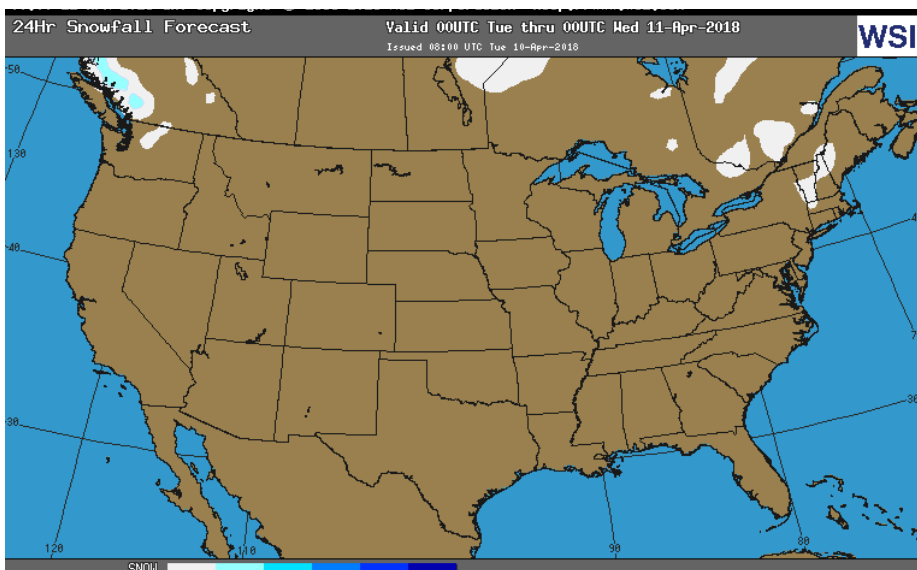
Total Demand – +87.9

[NEXT REPORT ON Apr 12]

## OBSERVED SNOW DEPTH

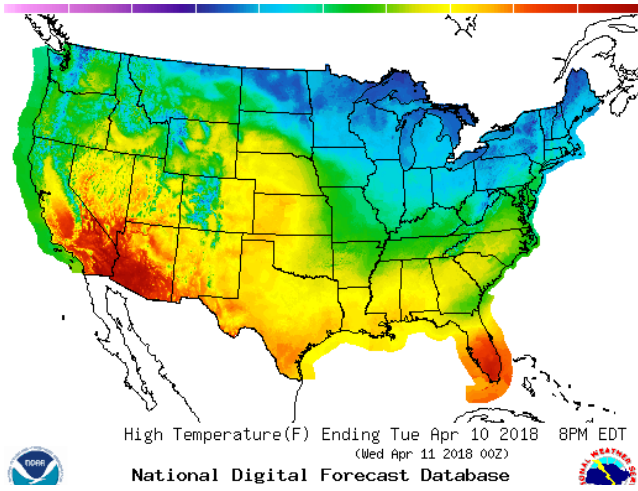


## 24 HOUR SNOWFALL FORECAST

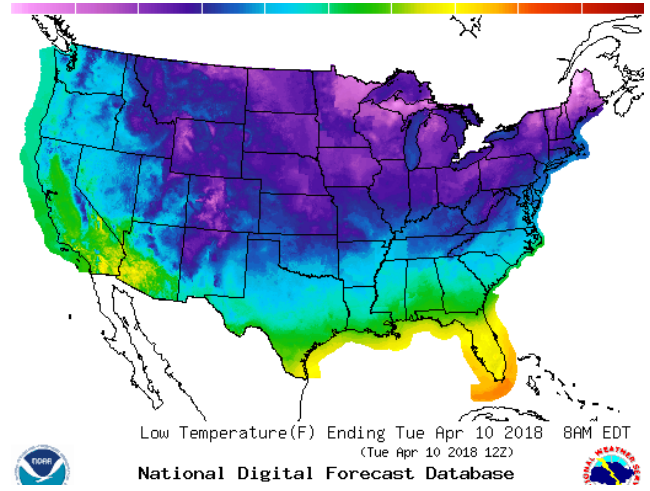


WEATHER – HIGH / LOW TEMPERATURE TOMORROW

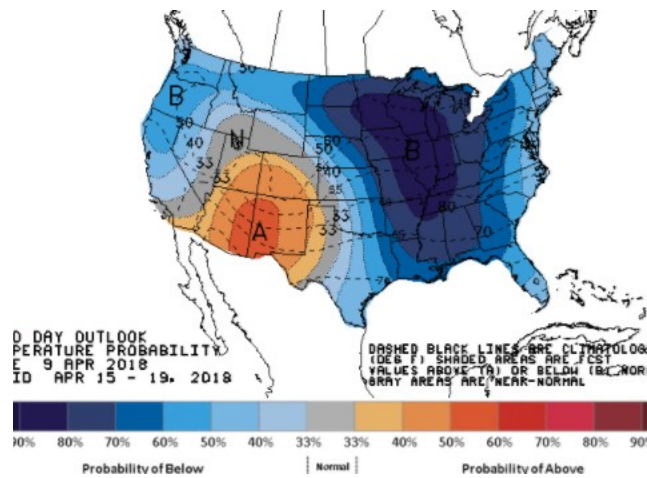
HIGH Temperature



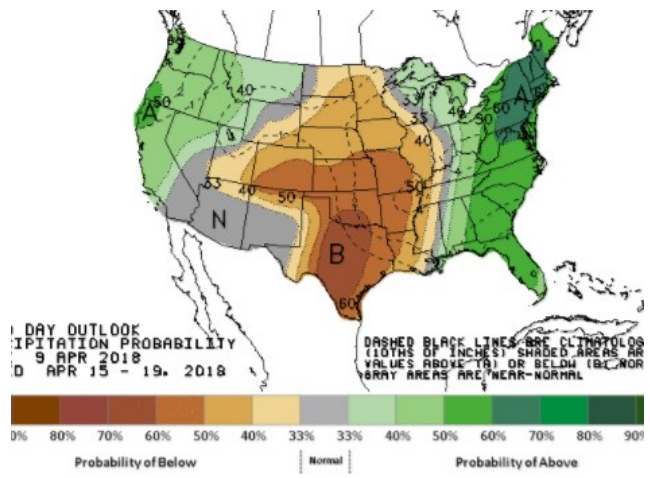
LOW Temperature



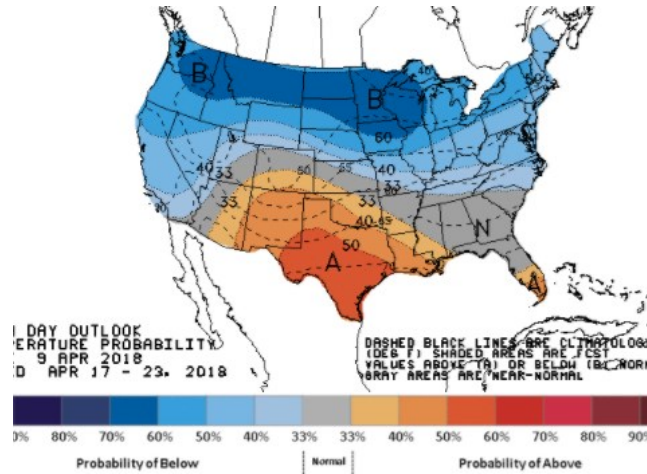
WEATHER – 6 TO 10 DAY OUTLOOK – NOAA  
Temperature



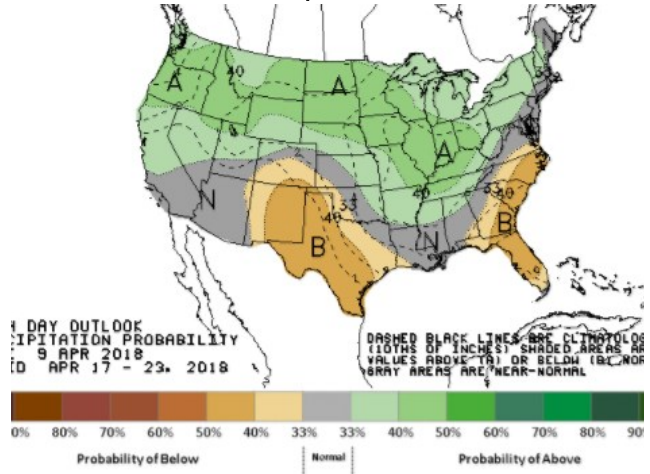
Precipitation



WEATHER – 8 TO 14 DAY OUTLOOK – NOAA  
Temperature



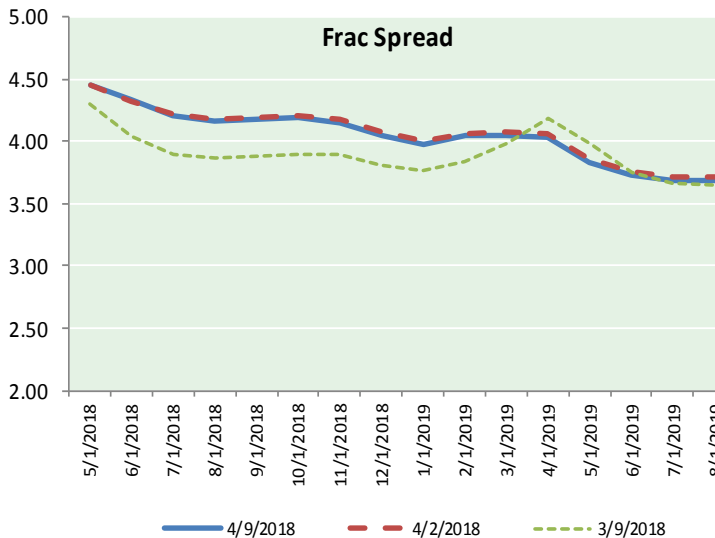
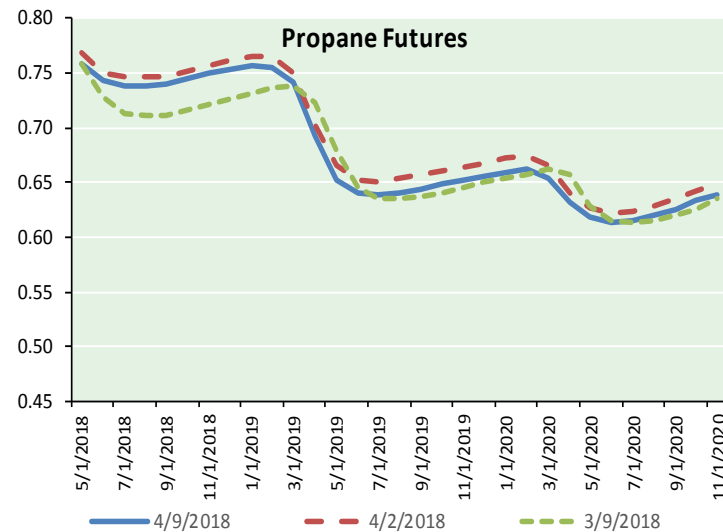
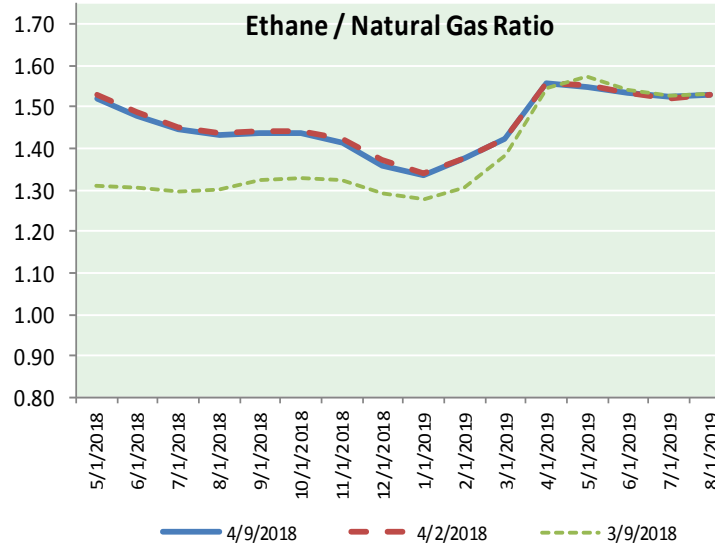
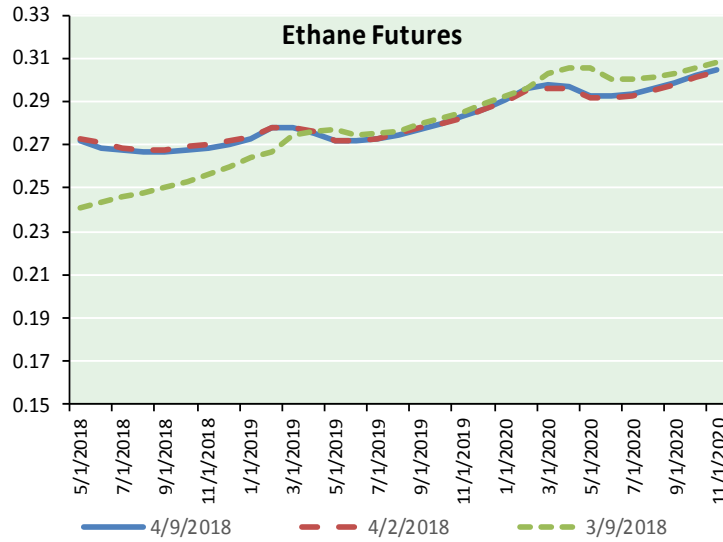
Precipitation



# NATURAL GAS NEWS



## ETHANE FUTURES, NG/ETHANE RATIO, PROPANE FUTURES, AND THE FRAC SPREAD



### CME Future Prices

#### Ethane (C2)

##### Non-LDH— Mont Belvieu

Month	Close	Change
May-18	0.272	(0.004)
Jun-18	0.269	(0.004)
Jul-18	0.268	(0.003)
Aug-18	0.267	(0.002)
Sep-18	0.267	(0.003)
Oct-18	0.268	(0.003)
Nov-18	0.268	(0.003)
Dec-18	0.270	(0.002)
Jan-19	0.273	(0.002)
Feb-19	0.278	(0.001)
Mar-19	0.278	(0.001)
Apr-19	0.276	(0.001)

1YR Strip 0.271 (0.002)

### CME Future Prices

#### Propane (C3)

##### Non-LDH— Mont Belvieu

Month	Close	Change
May-18	0.759	0.016
Jun-18	0.743	0.015
Jul-18	0.738	0.014
Aug-18	0.738	0.014
Sep-18	0.741	0.014
Oct-18	0.745	0.013
Nov-18	0.749	0.014
Dec-18	0.753	0.014
Jan-19	0.756	0.014
Feb-19	0.756	0.013
Mar-19	0.741	0.013
Apr-19	0.693	0.013

1YR Strip 0.743 0.014



**Prompt WTI (CL) Crude  
Daily Sentiment**

**BULLISH**



RESISTANCE

64.04 & 64.67

SUPPORT

62.36 & 61.31

FOLLOW US ON TWITTER:



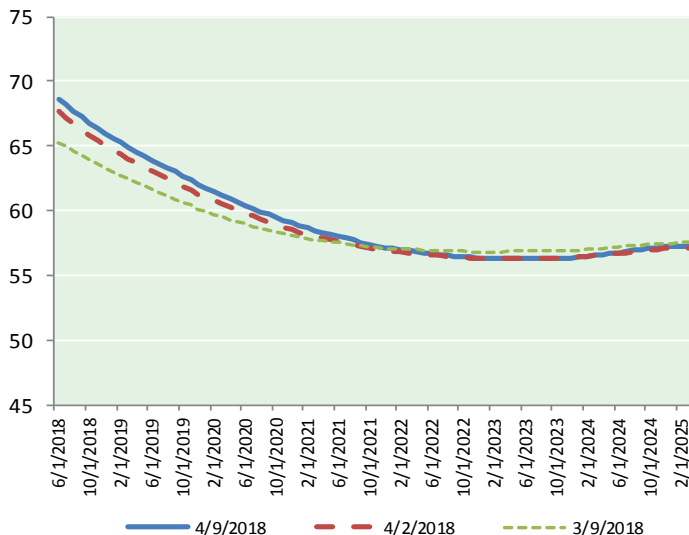
@MPG\_NatGasNews

**NYMEX Brent (BZ)**

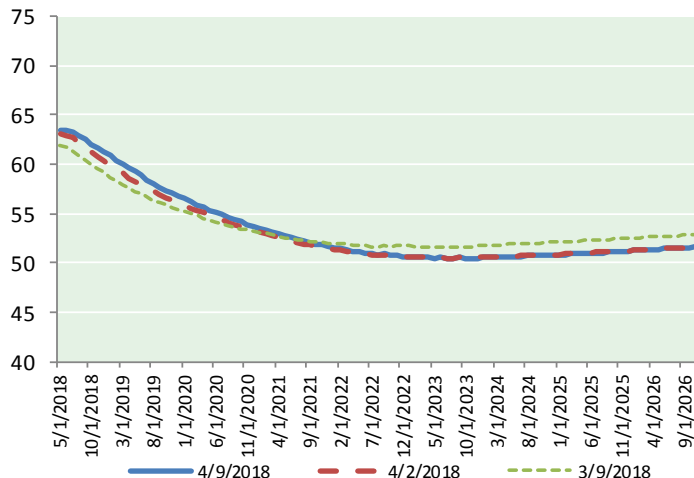
**Futures**

Month	Close	Change
Jun-18	68.65	1.54
Jul-18	68.18	1.50
Aug-18	67.70	1.46
Sep-18	67.23	1.41
Oct-18	66.79	1.35
Nov-18	66.38	1.29
Dec-18	65.98	1.24
Jan-19	65.61	1.19
Feb-19	65.25	1.12
Mar-19	64.90	1.07
Apr-19	64.56	1.02
May-19	64.22	0.97
Jun-19	63.90	0.93
Jul-19	63.63	0.90
Aug-19	63.34	0.87
Sep-19	63.01	0.83
Oct-19	62.70	0.80
Nov-19	62.38	0.76
Dec-19	62.01	0.73
Jan-20	61.71	0.71
Feb-20	61.45	0.68
Mar-20	61.19	0.65
Apr-20	60.94	0.63
May-20	60.71	0.60
1YR Strip	66.29	1.26
2018	67.27	1.40
5YR Strip	60.16	0.58

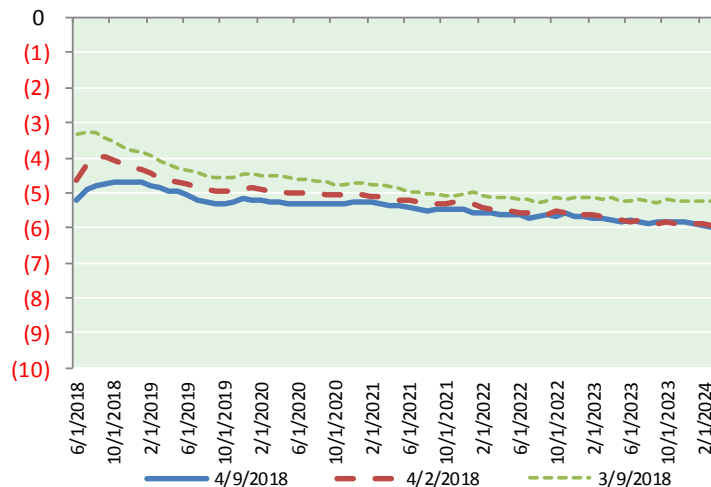
**BRENT CRUDE FORWARD CURVE**



**WTI CRUDE FORWARD CURVE**



**WTI-BRENT SPREAD**



**FRAC Spread**

**Specifications**

Ethane :	42%	66,500 btu/g
Propane :	28%	90,830 btu/g
Butane :	11%	102,916 btu/g
Iso-Butane :	6%	98,935 btu/g
Natural Gasoline :	13%	115,021 btu/g

**Prompt NGL Futures**

(\$/gallon)

	May-18	Close	Change
Butane	0.872	0.013	
Iso-Butane	0.875	0.011	
Nat Gasoline	1.435	0.027	

**NYMEX WTI (CL) Futures**

Month	Close	Change
May-18	63.42	1.36
Jun-18	63.43	1.33
Jul-18	63.26	1.30
Aug-18	62.91	1.27
Sep-18	62.50	1.24
Oct-18	62.08	1.21
Nov-18	61.68	1.18
Dec-18	61.29	1.15
Jan-19	60.89	1.11
Feb-19	60.46	1.08
Mar-19	60.04	1.04
Apr-19	59.63	0.99
May-19	59.24	0.95
Jun-19	58.84	0.91
Jul-19	58.44	0.86
Aug-19	58.07	0.84
Sep-19	57.71	0.80
Oct-19	57.38	0.76
Nov-19	57.09	0.73
Dec-19	56.84	0.70
Jan-20	56.52	0.67
Feb-20	56.22	0.64
Mar-20	55.93	0.60
Apr-20	55.65	0.58
1YR Strip	61.80	1.19
2018	62.57	1.26
5YR Strip	55.05	0.56