

NATURAL GAS



APRIL 7, 2017

Prior Day's NYMEX May-17 Contract (CT)



NYMEX NG Futures

Month	Close	Change
May-17	3.331	0.065
Jun-17	3.401	0.057
Jul-17	3.470	0.054
Aug-17	3.491	0.051
Sep-17	3.475	0.050
Oct-17	3.486	0.049
Nov-17	3.531	0.047
Dec-17	3.647	0.047
Jan-18	3.715	0.044
Feb-18	3.671	0.043
Mar-18	3.571	0.040
Apr-18	2.931	(0.002)
May-18	2.857	(0.007)
Jun-18	2.873	(0.008)
Jul-18	2.891	(0.009)
Aug-18	2.893	(0.009)
Sep-18	2.872	(0.010)
Oct-18	2.891	(0.010)
Nov-18	2.944	(0.009)
Dec-18	3.082	(0.007)
Jan-19	3.188	(0.006)
Feb-19	3.160	(0.005)
Mar-19	3.087	(0.005)
Apr-19	2.684	(0.017)
1YR Strip	3.477	0.045
2017	3.479	0.053
5YR Strip	2.977	(0.004)



IN THE NEWS

Natural gas price sustains increase following storage report — Yahoo Finance reports: The U.S. Energy Information Administration (EIA) reported Thursday morning that U.S. natural gas

- Natural gas price sustains increase following storage report
- European electricity sector pledges no new coal plants after 2020

stocks increased by 2 billion cubic feet for the week ending March 31. Analysts surveyed by S&P Global Platts were expecting a storage injection of 10 billion cubic feet. The five-year average for the week is a withdrawal of around 13 billion cubic feet, and last year's storage increase for the week totaled 6 billion cubic feet. Natural gas inventories fell by 43 billion cubic feet in the week ending March 31. April 1 marked the beginning of the natural gas injection season, and we should expect the nation's stockpiles to begin rising again. The injection season ends October 31. For more on this story visit yahoo.com or click the following link <https://yhoo.it/2p8DO7l>

European electricity sector pledges no new coal plants after 2020 — Inhabitat reports: In another sign that the world is rapidly moving away from coal, the European electricity sector just announced a commitment to not invest in new coal-fired power plants after 2020. Every European Union country signed onto the initiative except for Poland and Greece. Coal is already in decline as Europe continues making massive investments in renewable energy sources such as solar and wind. Last year, European coal emissions fell by an impressive 11 percent, according to an analysis published by the European Commission. The decrease of coal emissions is part of a long-term trend — since 2010, European coal's generation emissions fell by 16 percent and overall power sector emissions fell by 19 percent. For more on this story visit inhabitat.com or click the following link <http://bit.ly/2nRE2jj>

12 MONTH CANDLESTICK (WEEKLY)



Prompt Natural Gas (NG) Daily Sentiment

BULLISH



RESISTANCE
3.36 & 3.40
SUPPORT
3.27 & 3.20

Trading Summary

NATURAL GAS

Futures	Close	Change
NG	3.331	0.065
Volume	267,968	64,428
Open Int.	1,056,814	23,432

CRUDE AND GASOLINE

Futures	Close	Change
Crude	51.70	0.55
RBOB	1.7296	0.0143
Crude/NG	15.52	(0.14)

METALS

Futures	Close	Change
Gold	1,250.30	11.70

EQUITIES

Exchange	Close	Change
DOW	20,662.95	14.80
S&P 500	2,294.62	(58.33)

CURRENCY

Currency	Close	Change
EUR/USD	1.0682	(0.0021)
USD/CND	1.3410	(0.0004)

Contact Us



Mansfield Energy Corp
1025 Airport Pkwy
Gainesville, GA 30501

www.mansfield.energy

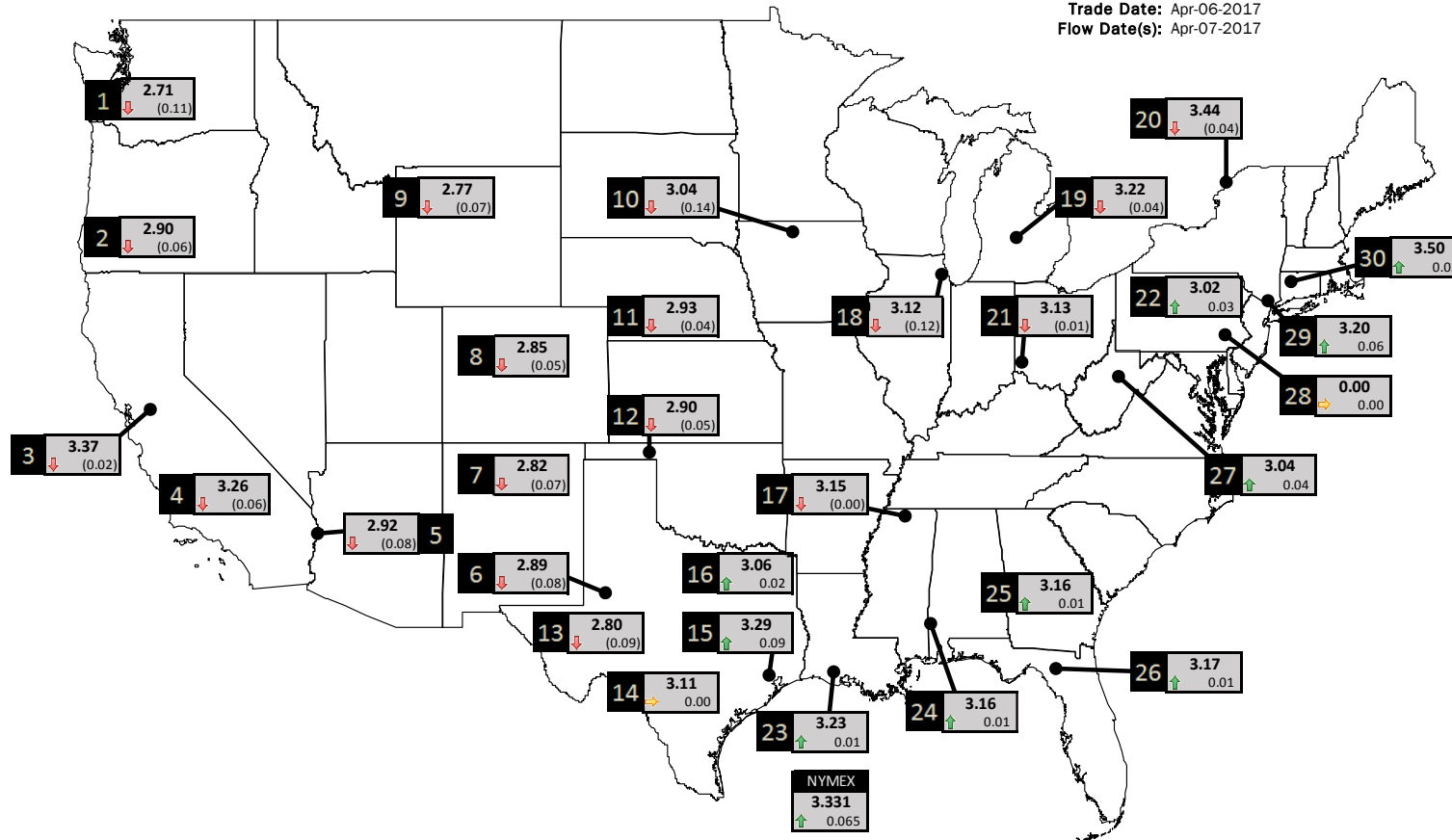
info@mansfieldoil.com

Phone: (800) 695-6626

NATURAL GAS NEWS

PHYSICAL SPOT NATURAL GAS PRICE MAP

Trade Date: Apr-06-2017
Flow Date(s): Apr-07-2017



ID	DAILY INDEX	PRICE	CHANGE
1	Stanfield	2.71	(0.11)
2	Malin	2.90	(0.06)
3	PG&E - Citygate	3.37	(0.02)
4	SoCal-Citygate	3.26	(0.06)
5	SoCal Border	2.92	(0.08)
6	Waha	2.89	(0.08)
7	EPSJ Blanco Pool	2.82	(0.07)
8	Opal Plant Tailgate	2.85	(0.05)
9	NWP-Wyoming	2.77	(0.07)
10	Ventura	3.04	(0.14)

ID	DAILY INDEX	PRICE	CHANGE
11	NGPL-Midcont Pool	2.93	(0.04)
12	Panhandle	2.90	(0.05)
13	EP-Permian	2.80	(0.09)
14	TGP-ZO	3.11	0.00
15	Houston Ship Channel	3.29	0.09
16	NGPL-TXOK	3.06	0.02
17	TETCO-M1 30	3.15	(0.00)
18	Chicago Citygates	3.12	(0.12)
19	Michcon	3.22	(0.04)
20	Iroquois (into)	3.44	(0.04)

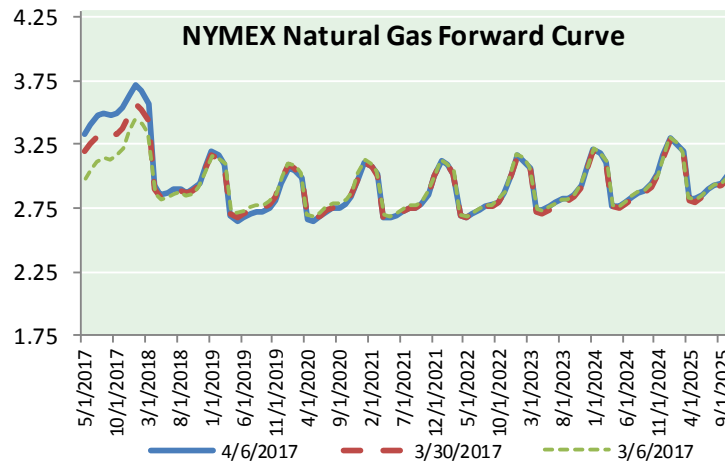
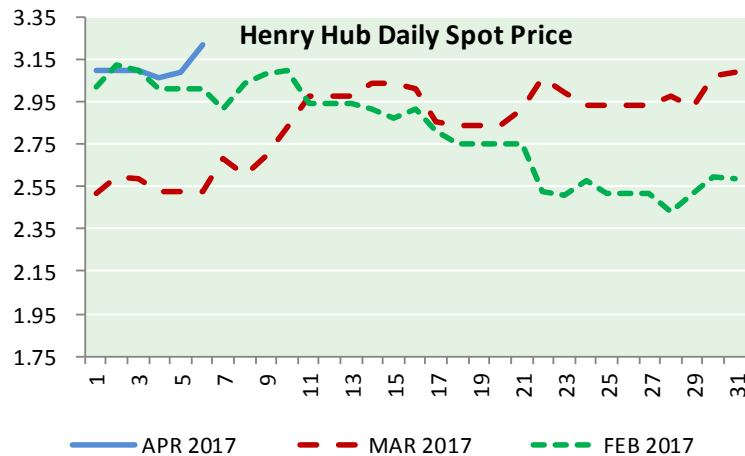
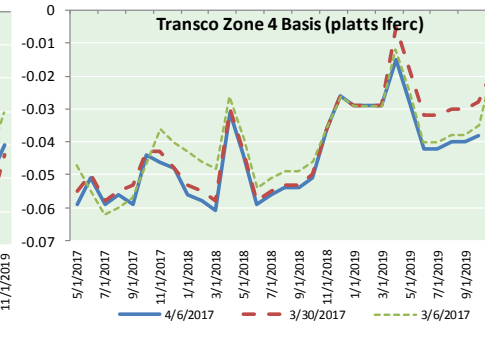
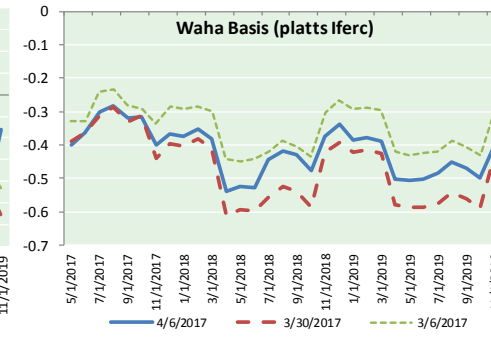
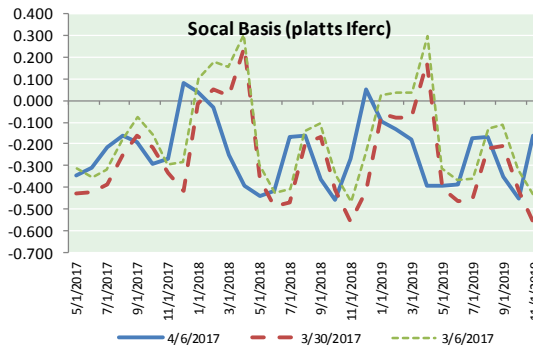
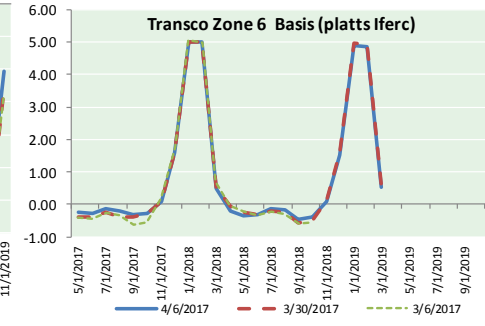
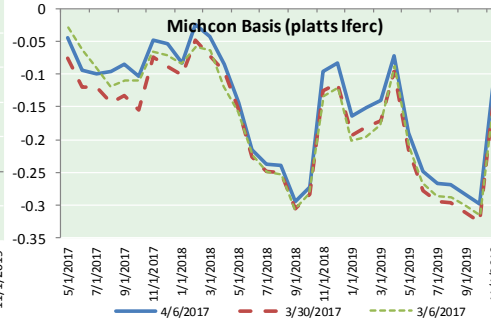
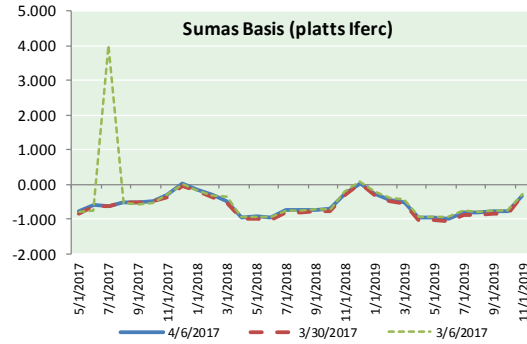
ID	DAILY INDEX	PRICE	CHANGE
21	REX E-ANR	3.13	(0.01)
22	Leidy-Transco	3.02	0.03
23	Henry	3.23	0.01
24	Transco-85	3.16	0.01
25	Sonat-ZO South	3.16	0.01
26	FGT-Z3	3.17	0.01
27	Dominion-South	3.04	0.04
28	Transco-Z6 (non-NY)	0.00	0.00
29	Transco-Z6 (NY)	3.20	0.06
30	Iroquois-Z2	3.50	0.02



DISCLAIMER: The content herein is privileged and confidential. Content is presented for informational purposes and is a reflection of the market opinions of its authors subject to change without notice. Content is derived from sources believed to be accurate at the time of release but carries no guarantee of accuracy or completeness. Mansfield Energy Corp and its clients may or may not take positions similar or opposite those discussed herein. The reader should realize that the trading of commodities involves risk, and the reader assumes all responsibility for the risk of financial losses.

NATURAL GAS NEWS

NATURAL GAS BASIS FUTURES, HENRY HUB SPOT PRICES, AND FORWARD CURVE



CME NG Option Prices

ATM Call

Month	Strike	Close	Imp Vol
May-17	3.300	0.128	45.0
Jun-17	3.350	0.200	39.4
Jul-17	3.450	0.237	37.5
Aug-17	3.450	0.275	35.6
Sep-17	3.450	0.305	35.6
Oct-17	3.450	0.331	34.7
Nov-17	3.500	0.360	34.7
Dec-17	3.300	0.1	0.1
Jan-18	3.300	0.1	0.1
Feb-18	3.300	0.1	0.1
Mar-18	3.300	0.1	0.1
Apr-18	3.300	0.1	0.1
May-18	3.300	0.1	0.1
Jun-18	3.300	0.1	0.1
Jul-18	3.300	0.1	0.1
Aug-18	3.300	0.1	0.1
Sep-18	3.300	0.1	0.1

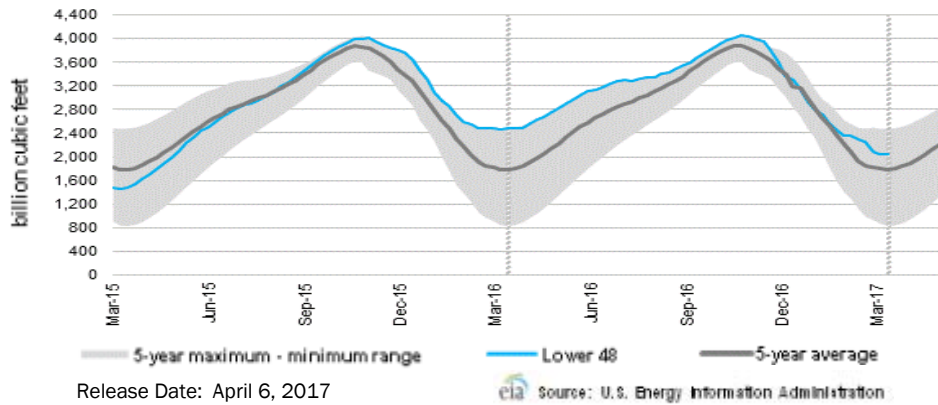
CME NG Option Prices

ATM Put

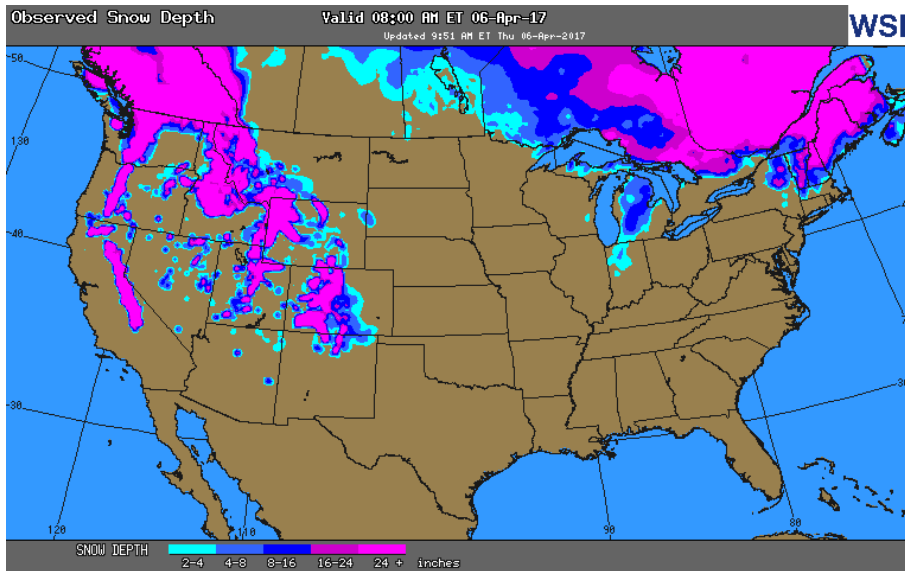
Month	Strike	Close	Imp Vol
May-17	3.300	0.115	37.5
Jun-17	3.350	0.158	33.7
Jul-17	3.450	0.215	31.9
Aug-17	3.450		
Sep-17	3.450		
Oct-17	3.450		
Nov-17	3.500	0.335	31.9
Dec-17		0.000	0.1
Jan-18		0.000	0.1
Feb-18		0.000	0.1
Mar-18		0.000	0.1
Apr-18		0.000	0.1
May-18		0.000	0.1
Jun-18		0.000	0.1
Jul-18		0.000	0.1
Aug-18		0.000	0.1
Sep-18		0.000	0.1

NATURAL GAS NEWS

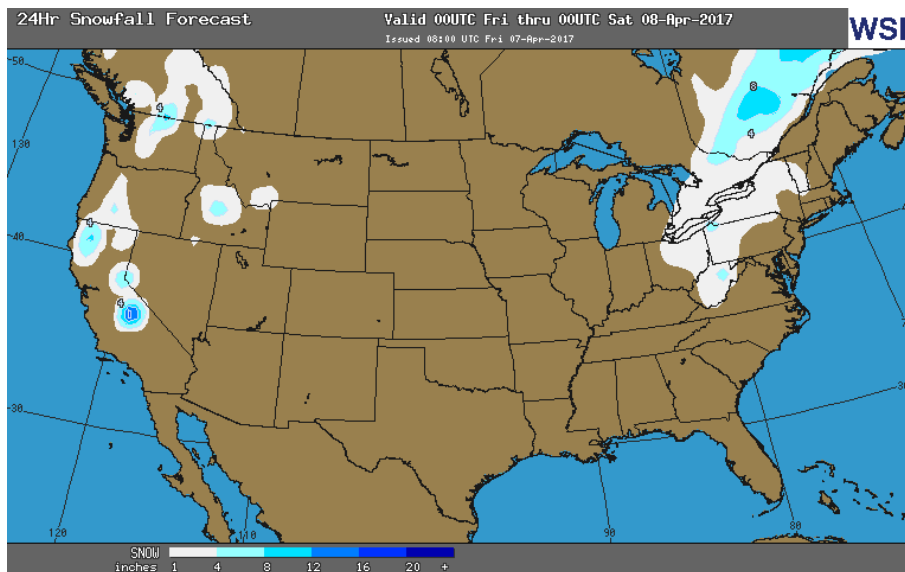
WEEKLY GAS IN UNDERGROUND STORAGE WITH 5-YR RANGE



OBSERVED SNOW DEPTH



24 HOUR SNOWFALL FORECAST



Rig Count

Report Date: March 31, 2017

	Total	Change
US -	824	+15
CN -	155	(30)

EIA Weekly NG Storage Actual and Surveys for March, 2017

Released March 30 2017
 Range — (14) to 15 BCF
 ARM — +5
 Reuters — +7
 PIRA — +7

EIA ACTUAL — +2

Total Working Gas In Storage

2,051 BCF

+2 BCF (LAST WEEK)
 (427) BCF (LAST YEAR)
 +265 BCF (5-YR AVG)

U.S. Natural Gas Supply Gas Week 3/30– 4/6

Average daily values (BCF/D):
 Last Year (BCF/d)
 Dry Production — +72.8
 Total Supply — +78.3
 Last Week (BCF/d)
 Dry Production — +69.8
 Total Supply — +75.4

[NEXT REPORT ON APR 13]

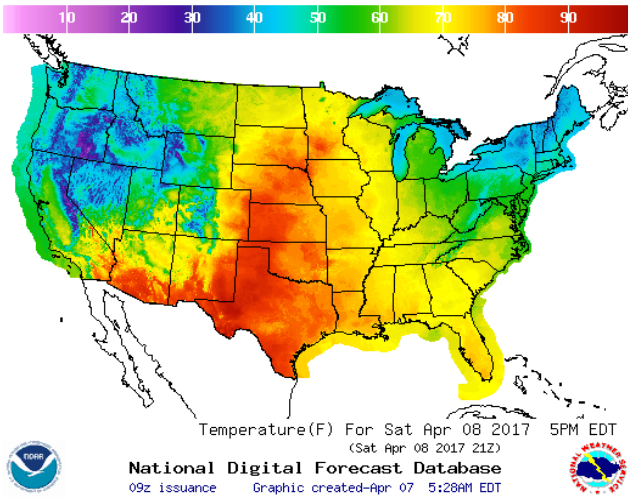
U.S. Natural Gas Demand Gas Week 3/30– 4/6

Average daily values (BCF/D):
 Last Year (BCF/d)
 Power — +22.8
 Total Demand — +77.0
 Last Week (BCF/d)
 Power — +21.8
 Total Demand — +75.0

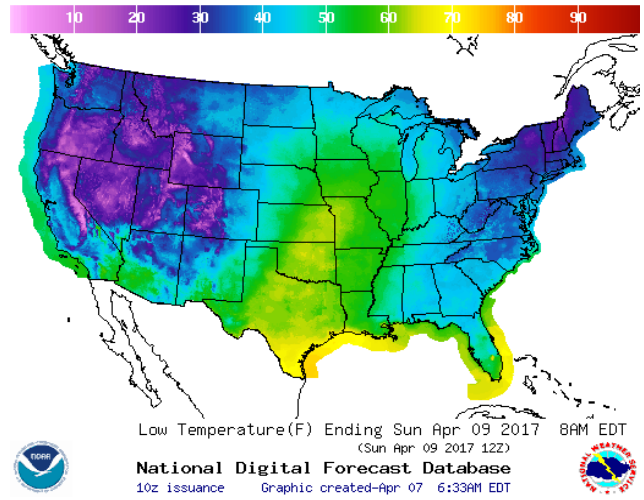
[NEXT REPORT ON APR 13]

WEATHER – HIGH / LOW TEMPERATURE SATURDAY

HIGH Temperature

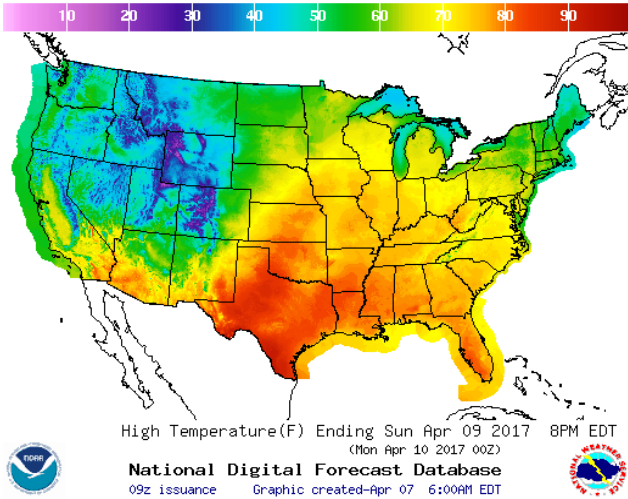


LOW Temperature

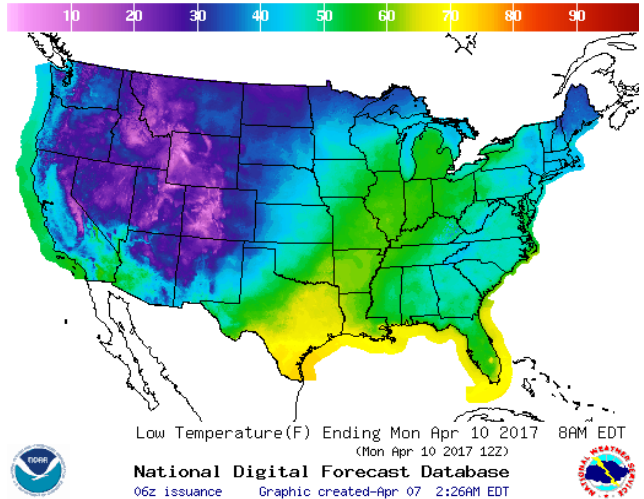


WEATHER – HIGH / LOW TEMPERATURE SUNDAY

HIGH Temperature



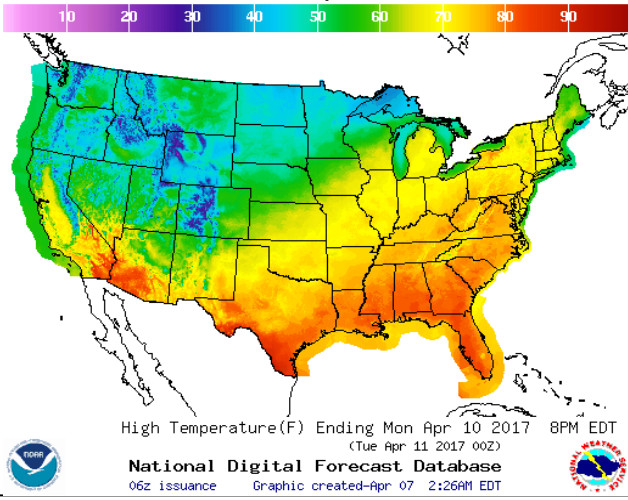
LOW Temperature



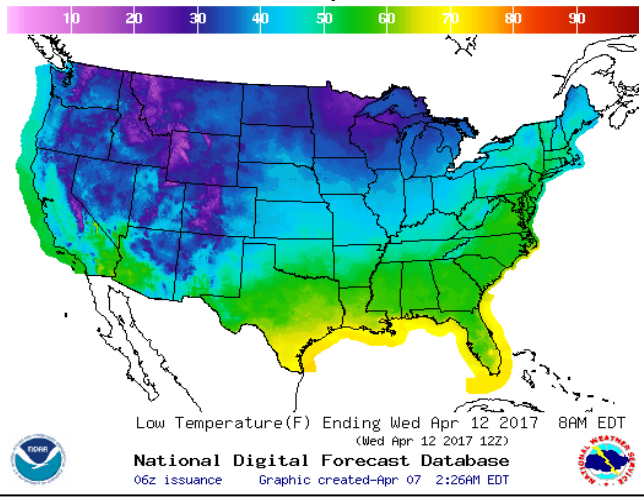
https://
graphical.weather.gov/sectors/
north-
east.php

WEATHER – HIGH / LOW TEMPERATURE MONDAY

HIGH Temperature

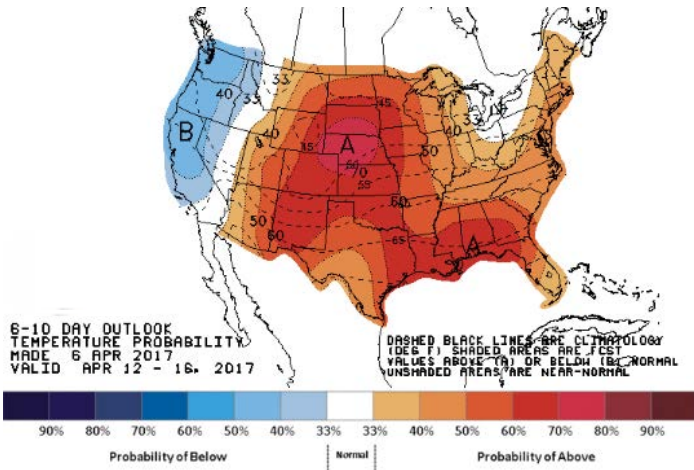


LOW Temperature

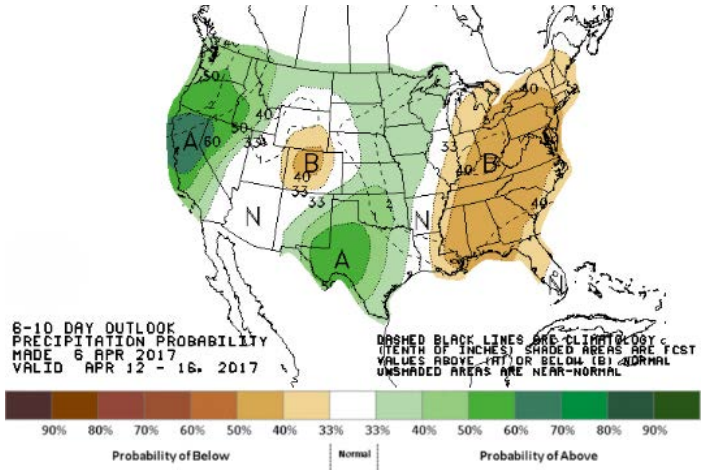


NATURAL GAS NEWS

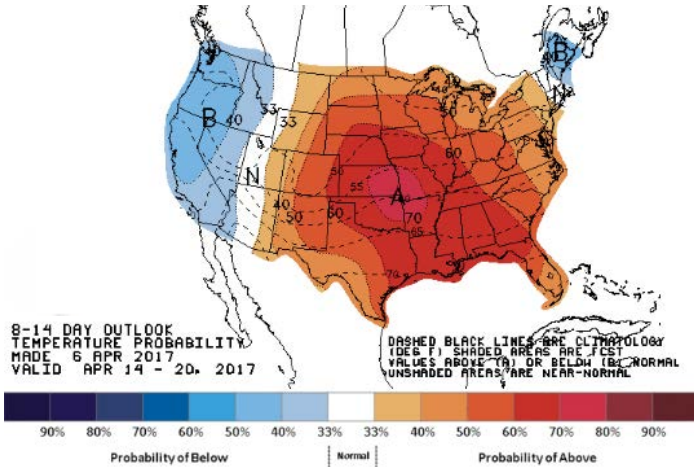
WEATHER — 6 TO 10 DAY OUTLOOK — NOAA Temperature



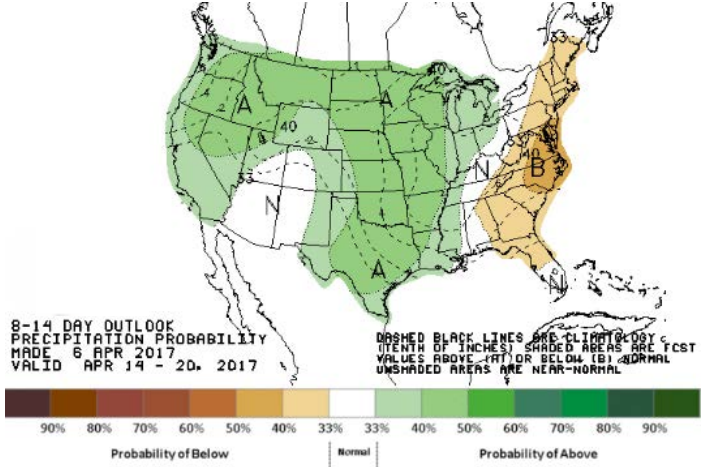
Precipitation



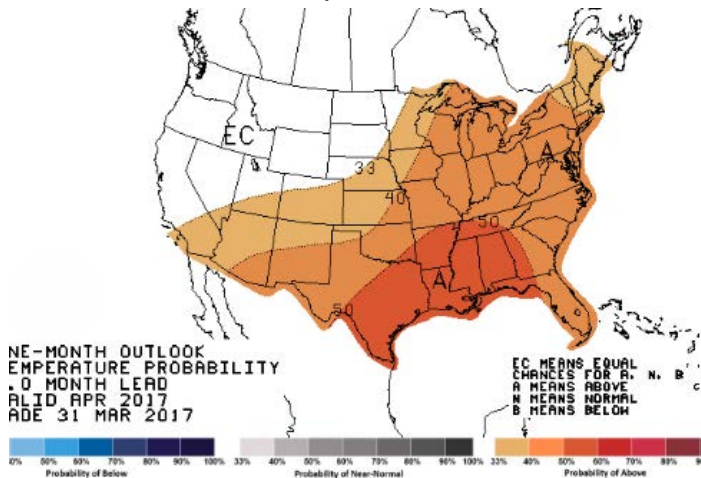
WEATHER — 8 TO 14 DAY OUTLOOK — NOAA Temperature



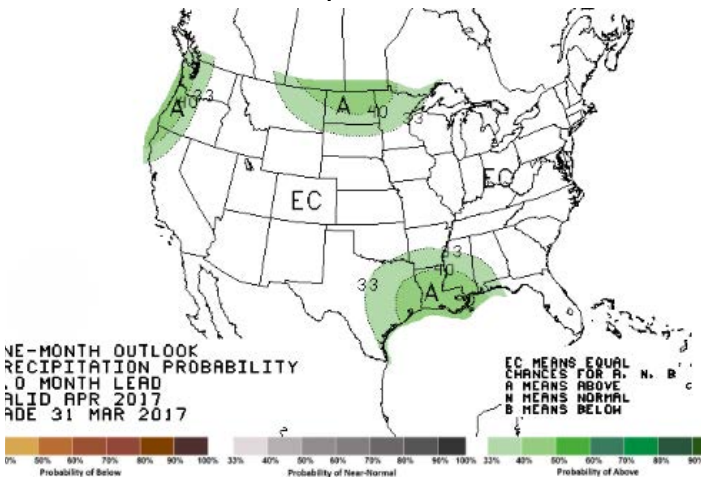
Precipitation



WEATHER — 30 DAY OUTLOOK — NOAA Temperature



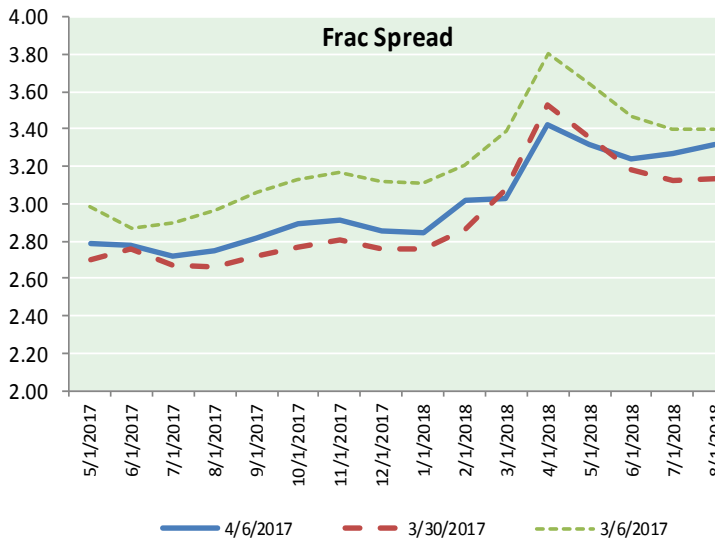
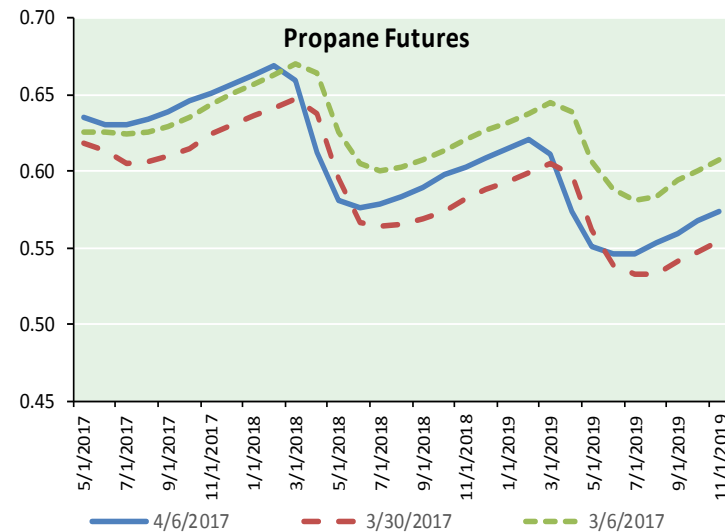
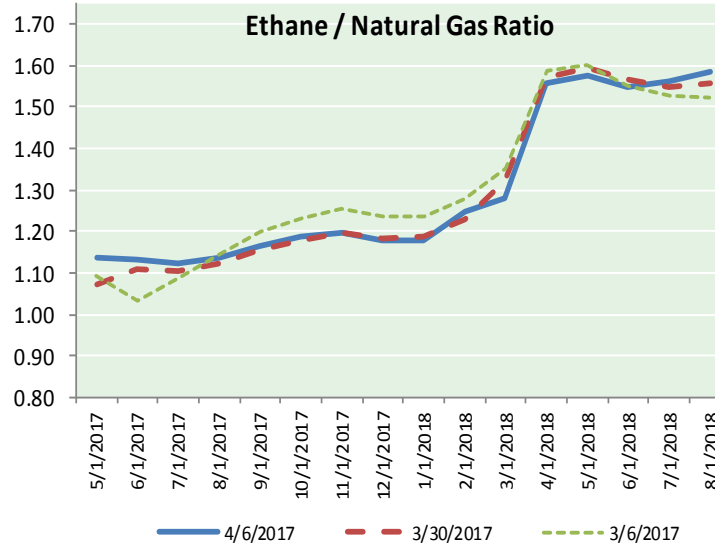
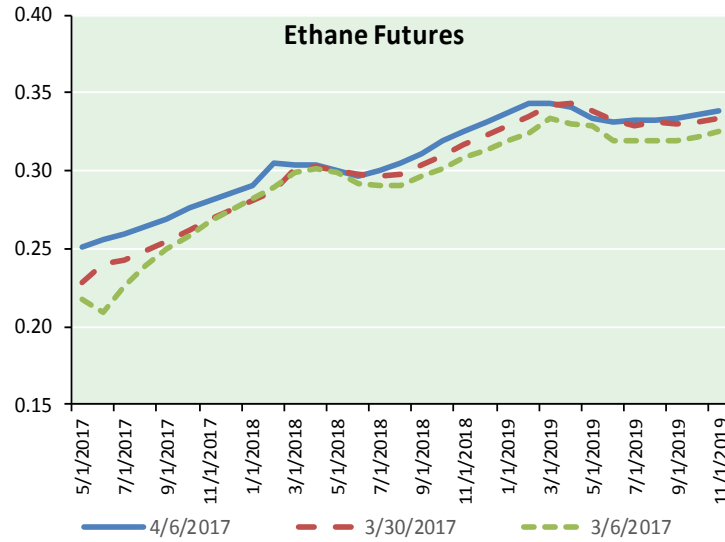
Precipitation



NATURAL GAS NEWS



ETHANE FUTURES, NG/ETHANE RATIO, PROPANE FUTURES, AND THE FRAC SPREAD



CME Future Prices

Ethane (C2)

Non-LDH— Mont Belvieu

(cents/gallon)		
Month	Close	Change
May-17	0.251	0.008
Jun-17	0.256	0.009
Jul-17	0.259	0.009
Aug-17	0.264	0.008
Sep-17	0.269	0.008
Oct-17	0.276	0.008
Nov-17	0.281	0.008
Dec-17	0.286	0.007
Jan-18	0.291	0.007
Feb-18	0.305	0.010
Mar-18	0.304	0.005
Apr-18	0.304	0.005

1YR Strip 0.279 0.008

CME Future Prices

Propane (C3)

Non-LDH— Mont Belvieu

(cents/gallon)		
Month	Close	Change
May-17	0.635	0.012
Jun-17	0.630	0.016
Jul-17	0.630	0.016
Aug-17	0.634	0.016
Sep-17	0.639	0.016
Oct-17	0.646	0.015
Nov-17	0.652	0.015
Dec-17	0.658	0.015
Jan-18	0.664	0.015
Feb-18	0.669	0.015
Mar-18	0.660	0.013
Apr-18	0.612	0.012

1YR Strip 0.644 0.015

NATURAL GAS NEWS



Prompt WTI (CL) Crude

Daily Sentiment

NEUTRAL



RESISTANCE

52.10 & 52.50

SUPPORT

51.00 & 50.50

FOLLOW US ON TWITTER:



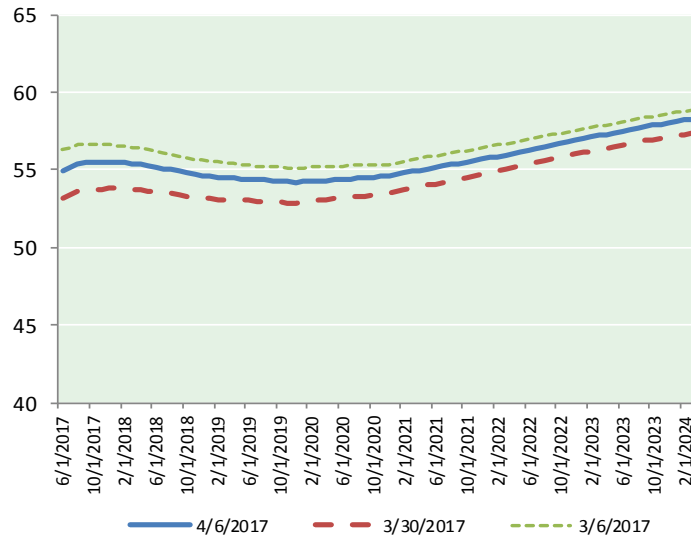
@MPG_NatGasNews

NYMEX Brent (BZ)

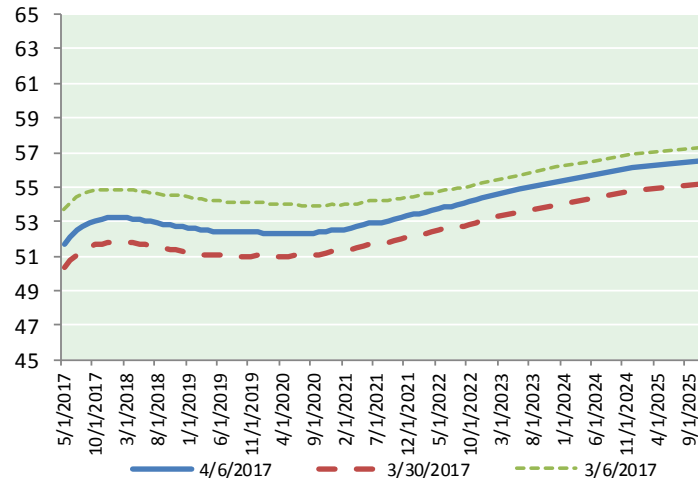
Futures

Month	Close	Change
Jun-17	54.89	0.53
Jul-17	55.17	0.54
Aug-17	55.35	0.52
Sep-17	55.45	0.51
Oct-17	55.51	0.50
Nov-17	55.53	0.49
Dec-17	55.53	0.48
Jan-18	55.51	0.47
Feb-18	55.46	0.46
Mar-18	55.40	0.45
Apr-18	55.34	0.44
May-18	55.26	0.43
Jun-18	55.15	0.41
Jul-18	55.07	0.39
Aug-18	55.00	0.38
Sep-18	54.90	0.36
Oct-18	54.79	0.35
Nov-18	54.69	0.34
Dec-18	54.62	0.33
Jan-19	54.59	0.33
Feb-19	54.55	0.32
Mar-19	54.52	0.31
Apr-19	54.49	0.30
May-19	54.44	0.29
1YR Strip	55.37	0.49
2017	55.35	0.51
5YR Strip	54.94	0.27

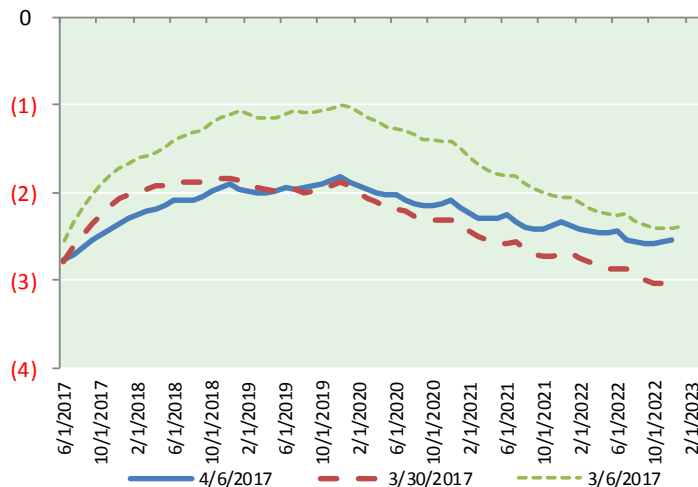
BRENT CRUDE FORWARD CURVE



WTI CRUDE FORWARD CURVE



WTI-BRENT SPREAD



FRAC Spread

Specifications

Ethane :	42%	66,500 btu/g
Propane :	28%	90,830 btu/g
Butane :	11%	102,916 btu/g
Iso-Butane :	6%	98,935 btu/g
Natural Gasoline :	13%	115,021 btu/g

Prompt NGL Futures

(\$/gallon)

	May-17	Close	Change
Butane	0.770	0.021	
Iso-Butane	0.760	0.017	
Nat Gasoline	1.142	0.006	

NYMEX WTI (CL) Futures

Month	Close	Change
May-17	51.70	0.55
Jun-17	52.13	0.53
Jul-17	52.47	0.52
Aug-17	52.72	0.50
Sep-17	52.90	0.48
Oct-17	53.03	0.46
Nov-17	53.12	0.44
Dec-17	53.18	0.42
Jan-18	53.21	0.41
Feb-18	53.21	0.40
Mar-18	53.19	0.39
Apr-18	53.15	0.37
May-18	53.11	0.37
Jun-18	53.06	0.37
Jul-18	52.99	0.36
Aug-18	52.92	0.36
Sep-18	52.86	0.36
Oct-18	52.80	0.35
Nov-18	52.75	0.35
Dec-18	52.72	0.35
Jan-19	52.63	0.34
Feb-19	52.56	0.33
Mar-19	52.52	0.33
Apr-19	52.48	0.33
1YR Strip	52.83	0.46
2017	52.66	0.49
5YR Strip	52.74	0.32