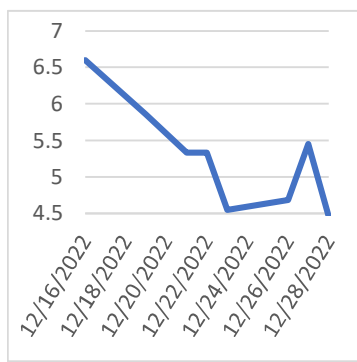


Thursday, December 29, 2022

### Last Week's Prompt NYMEX



### NYMEX NG Futures

Month	Close	Change
Feb-23	4.685	(1.902)
Mar-23	4.194	(2.222)
Apr-23	4.008	(1.777)
May-23	4.011	(1.085)
Jun-23	4.125	(0.922)
Jul-23	4.241	(0.880)
Aug-23	4.246	(0.948)
Sep-23	4.193	(0.997)
Oct-23	4.254	(0.870)
Nov-23	4.534	(0.650)
Dec-23	4.924	(0.490)
Jan-24	5.173	(0.572)
Feb-24	4.979	(1.024)
Mar-24	4.433	(1.280)
Apr-24	3.86	(1.167)
May-24	3.813	(0.372)
Jun-24	3.897	(0.215)
Jul-24	3.988	(0.185)
Aug-24	4.012	(0.228)
Sep-24	3.972	(0.291)
Oct-24	4.062	(0.155)
Nov-24	4.408	0.104
Dec-24	4.896	0.288
Jan-25	5.202	0.185
1 YR STRIP	4.3823	(1.110)
2023	4.4068	(1.036)

### IN THE NEWS

#### Japan firms agree on long-term LNG deals with U.S. and

Japanese companies have agreed to purchase more liquefied natural gas (LNG) from the U.S. and Oman in the latest move to secure fuel supplies and avoid future shortages. Inpex, the nation's top gas explorer, has inked a deal to procure 1 million tons a year from Venture Global LNG's CP2 export project in Louisiana for 20 years. CP2 is slated to begin construction next year, according to Venture Global. Several firms, including Mitsui & Co., Itochu, and Jera, the nation's top power producer, will enter an agreement with Oman to buy an additional 2 million tons or so a year from 2025 for 10 years, NHK said Tuesday. Bloomberg previously reported that Mitsui had been shortlisted by Oman. The deals come as the government reevaluates how it can enhance energy security in the face of a fuel crunch at home. Global LNG sup... For more info go to <https://bit.ly/3G0EHbx>

#### Title Of Largest LNG Exporter In First Half Of 2022 Goes

The United States became the world's largest LNG exporter during the first half of this year, according to data from CEDIGAZ. Compared with the second half of 2021, U.S. LNG exports increased by 12% in the first half of 2022, averaging 11.2 billion cubic feet per day (Bcf/d). U.S. LNG exports continued to grow for three reasons – increased LNG export capacity, increased international natural gas and LNG prices, and increased global demand, particularly in Europe. According to estimates made by the U.S. Energy Information Administration (EIA), the installed U.S. LNG export capacity has expanded by 1.9 Bcf/d nominal (2.1 Bcf/d peak) since November 2021. The capacity additions included a sixth train at the Sabine Pass LNG, 18 new mid-scale liquefaction trains at the Calcasieu Pass LNG, and in... For more info go to <https://bit.ly/3Gnhdih>

#### U.S., Canada natgas output could hit growing pains In 2023

U.S. and Canadian natural gas production is expected to hit new records in 2023, but growth may be slow due to weakened demand, pipeline bottlenecks and a lack of new liquefied natural gas (LNG) export plants. Gas demand surged worldwide after Russia cut off Europe's primary supply, and the United States and Canada are expected to feed copious demand for exports in coming years, bolstered by high prices. The two countries produced a record combined 116 billion cubic feet per day (bcfd) in 2022. The United States has become one of Europe's most important sources of gas, providing essential energy security after Moscow's invasion of Ukraine. Next year's growth could be slower than recent years. Major production fields in both countries are inhibited by a lack of pipelines to move gas to key markets, including export... For more info go to <https://bit.ly/3i2LGZO>

### Prompt Natural Gas (NG) Daily Sentiment

BEARISH



RESISTANCE  
5.025 & 5.364  
SUPPORT  
4.404 & 4.122

### NATURAL GAS

Futures	Close
NG	\$4.685
Volume	62,153
Open Int.	96,765

### Contact Us



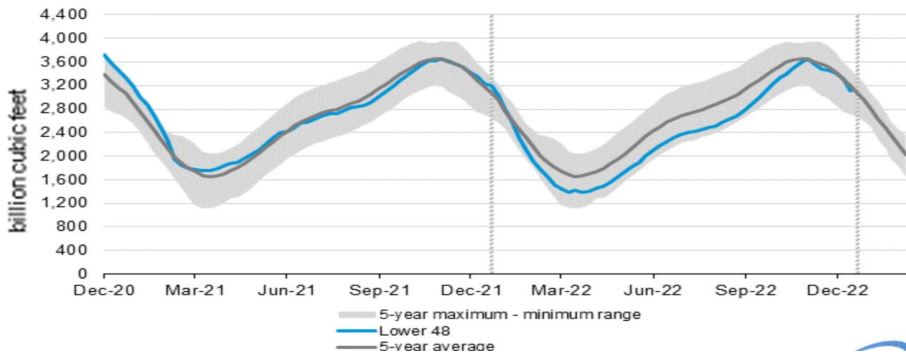
**Mansfield Energy Corp**  
1025 Airport Pkwy  
Gainesville, GA 30501  
[www.mansfield.energy](http://www.mansfield.energy)

info@mansfieldoil.com  
Phone: (800) 695 - 6626

# NATURAL GAS NEWS



## WEEKLY GAS IN UNDERGROUND STORAGE WITH 5-YR RANGE



for week ending December 23, 2022 | Released: December 29, 2022 | Next Release: January 05, 2022

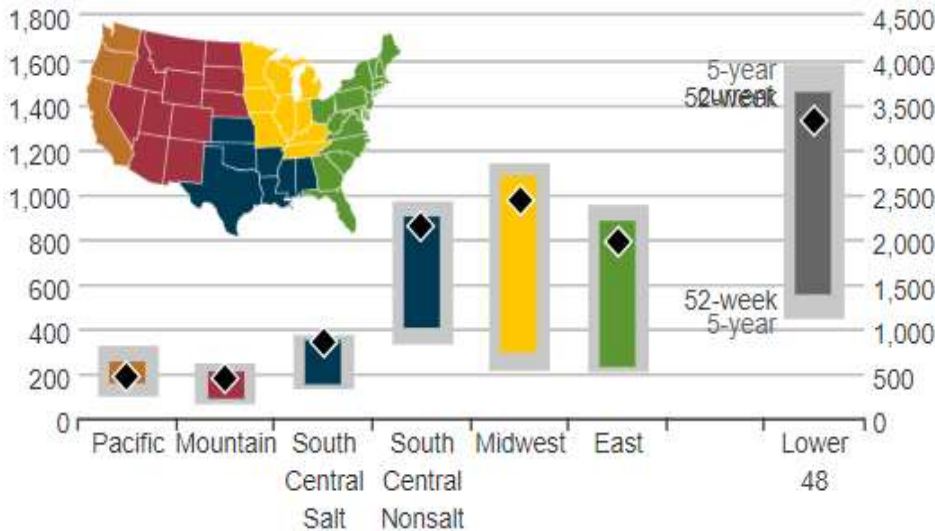
### EIA Weekly Storage Actual and Surveys for

December 23, 2022

Released December 29, 2022

Range	-182 to -213
S&P Global	-182
Investing.com	-201

## UNDERGROUND WORKING NAT GAS STORAGE AS OF 12/16/2022



### Total Working Gas In Storage

**3112 BCF**

- 213 BCF (LAST WEEK)
- 133 BCF (LAST YEAR)
- 85 BCF (5-YEAR AVG)

### U.S. Natural Gas Supply

Gas Week -

Average Daily Values (BCF/D):

Last Year (BCF/d)

Dry Production - 96.4

Total Supply - 101.7

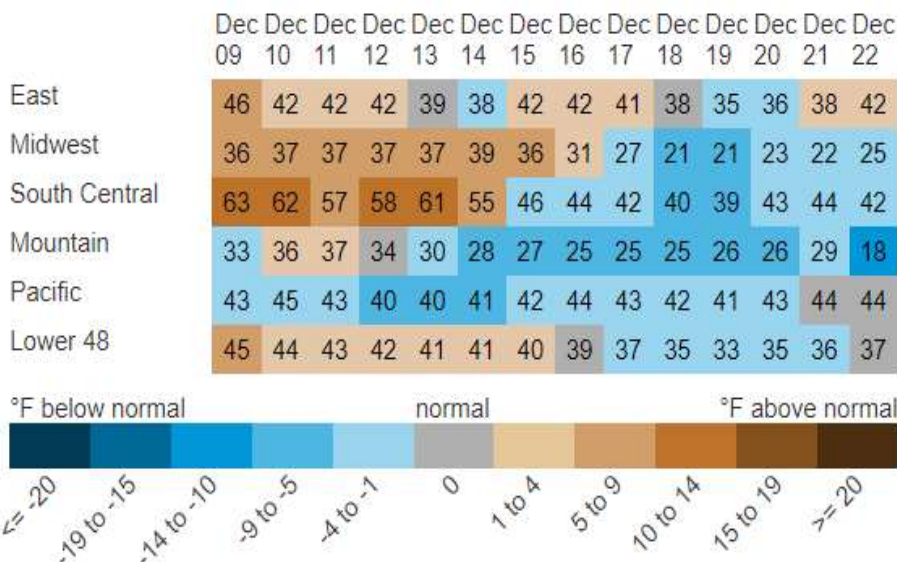
Last Week (BCF/d)

Dry Production - 100.2

Total Supply - 105.6

[Next Report: January 12]

## REGIONAL AVG TEMPERATURES AND DEPARTURE FROM NORMAL



### U.S. Natural Gas Demand

Gas Week -

Average Daily Values (BCF/D):

Last Year (BCF/d)

Power - 29.9

Total Demand - 114.3

Last Week (BCF/d)

Power - 31.2

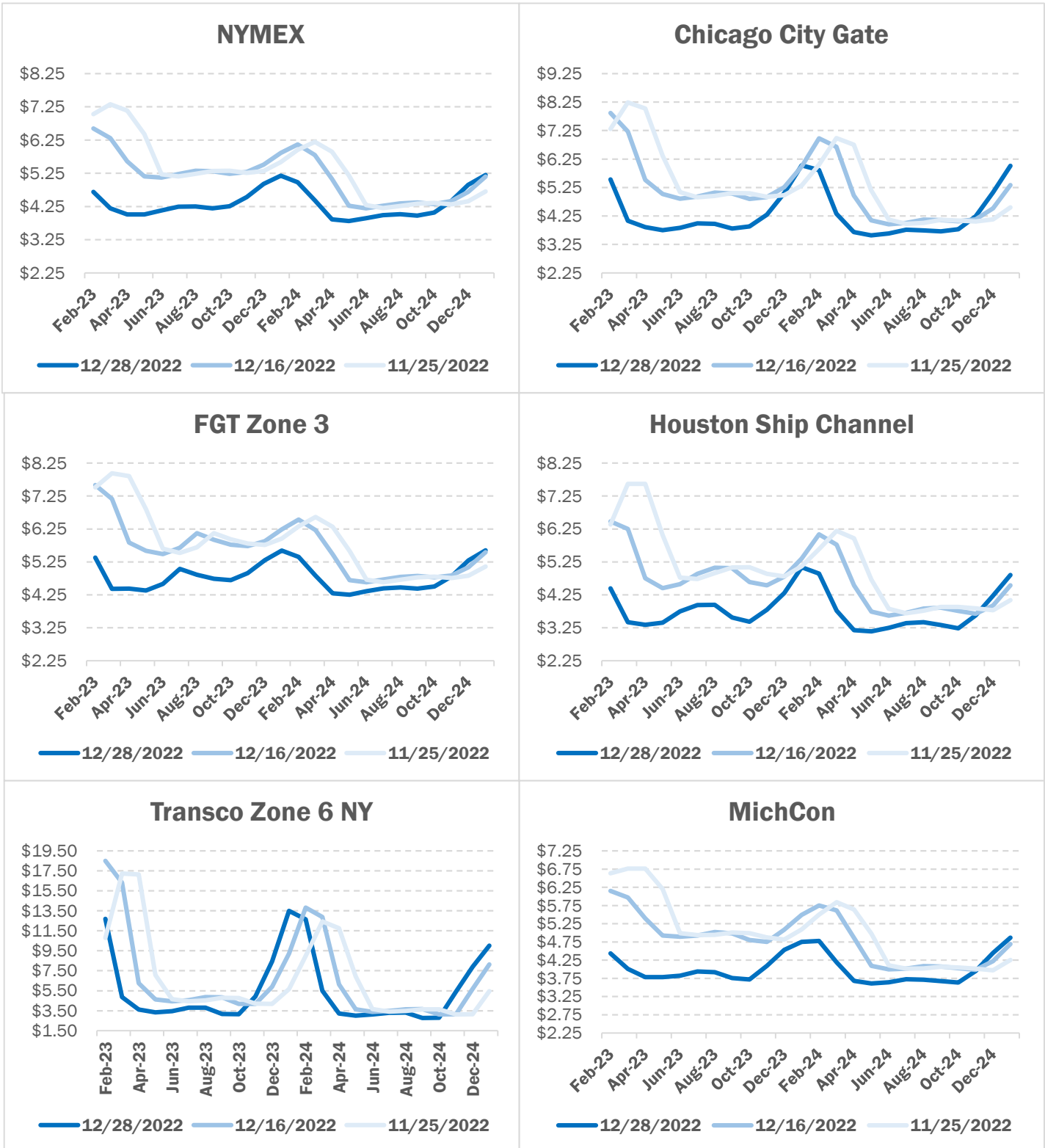
Total Demand - 118.2

[Next Report: January 12]

# NATURAL GAS NEWS



## NATURAL GAS BASIS FUTURES

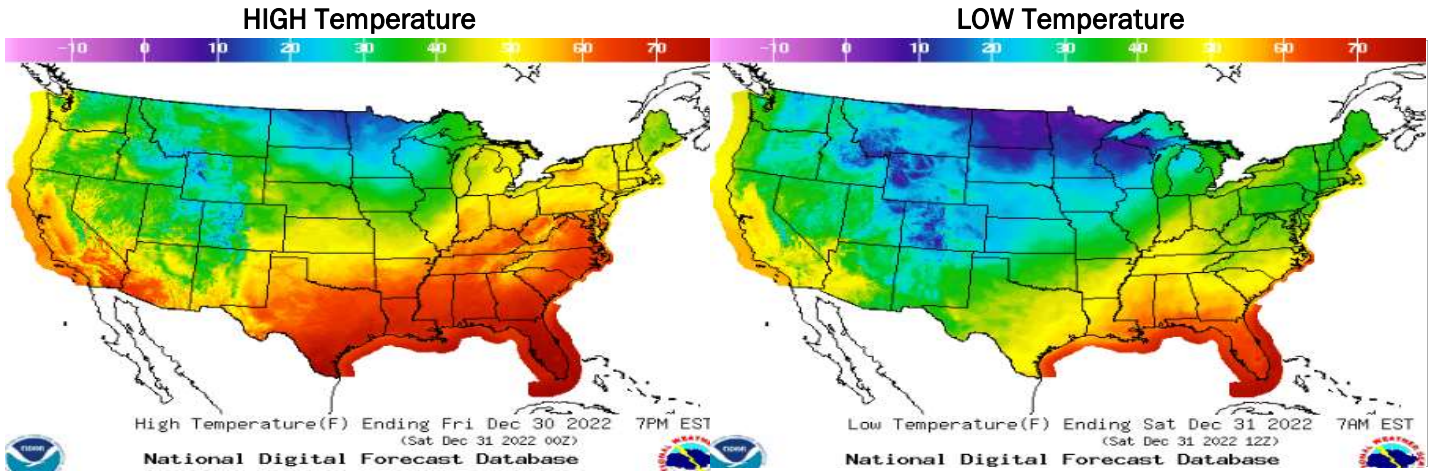




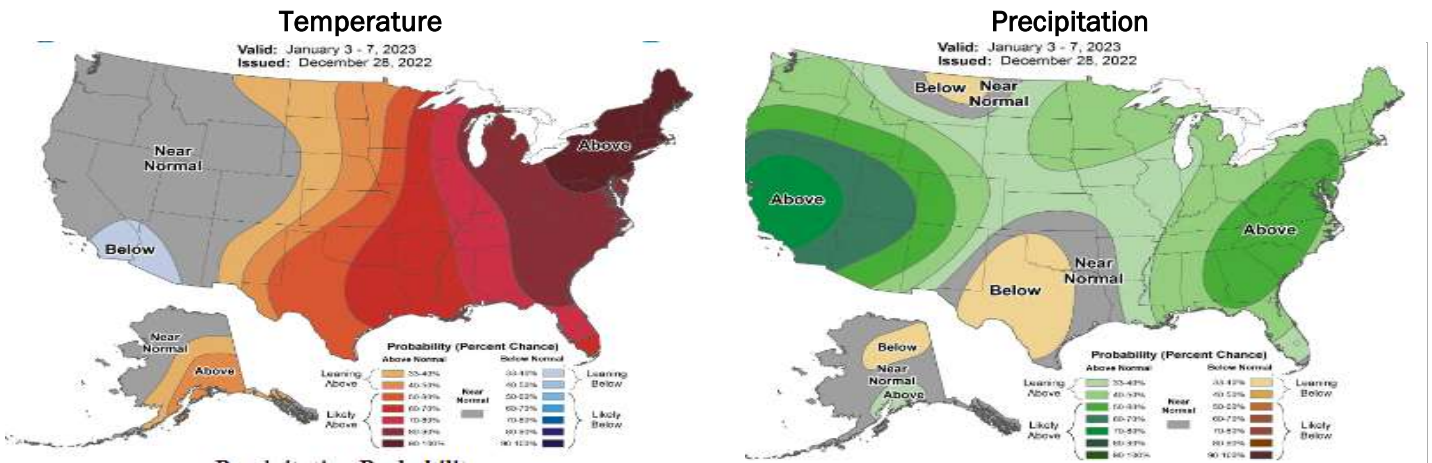
# NATURAL GAS NEWS



## WEATHER - HIGH / LOW TEMPERATURE - TOMORROW



## WEATHER - 6 - 10 DAY OUTLOOK - NOAA



## WEATHER - 8 - 14 DAY OUTLOOK - NOAA

