

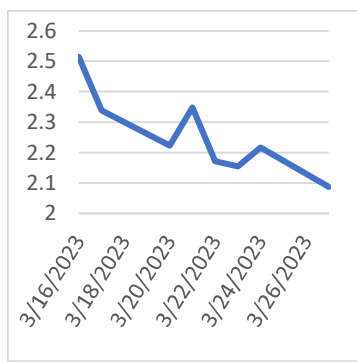
NATURAL GAS



NEWS

Tuesday, March 28, 2023

Last Week's Prompt NYMEX



NYMEX NG Futures

Month	Close	Change
Apr-23	2.088	(0.128)
May-23	2.215	(0.146)
Jun-23	2.458	(0.140)
Jul-23	2.726	(0.135)
Aug-23	2.772	(0.134)
Sep-23	2.736	(0.132)
Oct-23	2.833	(0.125)
Nov-23	3.217	(0.112)
Dec-23	3.691	(0.104)
Jan-24	3.887	(0.103)
Feb-24	3.782	(0.095)
Mar-24	3.481	(0.080)
Apr-24	3.203	(0.058)
May-24	3.204	(0.056)
Jun-24	3.365	(0.054)
Jul-24	3.52	(0.051)
Aug-24	3.556	(0.049)
Sep-24	3.515	(0.050)
Oct-24	3.59	(0.049)
Nov-24	3.95	(0.048)
Dec-24	4.407	(0.046)
Jan-25	4.68	(0.042)
Feb-25	4.568	(0.038)
Mar-25	4.209	(0.030)
1 YR STRIP 2023	2.9905	(0.120)
	3.0834	(0.114)

IN THE NEWS

US natgas futures up 3% on forecasts for colder weather

U.S. natural gas futures gained about 3% on Friday after falling to a one-month low in the prior session on forecasts confirming the weather will remain mostly colder than normal for the next two weeks, keeping heating demand higher than usual through early April. That price increase also came on expectations the amount of gas flowing to liquefied natural gas (LNG) export plants would hit a record high during the month of March after Freeport LNG's export plant in Texas exited an eight-month outage in February. It shut in a fire in June 2022. Front-month gas futures NGc1 for April delivery rose 6 cents, or 2.8%, to \$2.214 per million British thermal units (mmBtu) at 7:59 a.m. EDT (1159 GMT). On Thursday, the contract closed at its lowest since Feb. 21 when it settled at a 29-month low of \$2.073. For the week, the... For more info go to <https://bit.ly/3G07gqC>

Freeport LNG cancels some March cargoes on restart hiccups

The second biggest U.S. liquefied natural gas (LNG) export plant, Freeport, has cancelled up to four shipments of LNG, due to restart snags after an eight-month-long outage, trading sources told Reuters. In addition, the facility has recently loaded another vessel with a lower amount of gas than originally planned, two of the sources added. "You arrive with your vessel to load at a given time and they say 'yes you can load', but then an hour later it doesn't. They blame the long shutdown for restart hiccups," a trading source familiar with the matter said. When contacted by Reuters, a Freeport LNG spokesperson said that the company does not comment on commercial activity which includes its cargo schedules. The company said earlier this month that changes in feed gas flows and production ra... For more info go to <https://bit.ly/3IFL2TW>

Europe was the main destination for U.S. LNG exports in 2022

U.S. exports of liquefied natural gas (LNG) averaged 10.6 billion cubic feet per day (Bcf/d) in 2022, increasing by 9% (0.8 Bcf/d) compared with 2021, according to our Natural Gas Monthly. The increase in U.S. LNG exports was driven by strong LNG demand in Europe, high international natural gas prices, and expanded U.S. liquefaction capacity. U.S. LNG exports to Europe increased 141%, or 4.0 Bcf/d, compared with 2021. U.S. LNG exports to Europe (the European Union [EU-27] plus the United Kingdom) increased as a result of both natural gas supply challenges in Europe after Russia's pipeline exports to the region declined to 40-year lows and higher prices at Europe's natural gas trading hubs relative to other LNG markets.... For more info go to <https://bit.ly/3nmOldv>

Prompt Natural Gas (NG) Daily Sentiment

BEARISH



RESISTANCE
2.281 & 2.348
SUPPORT
2.166 & 2.118

NATURAL GAS

Futures	Close
NG	\$2.088
Volume	11,936
Open Int.	2,150

Contact Us



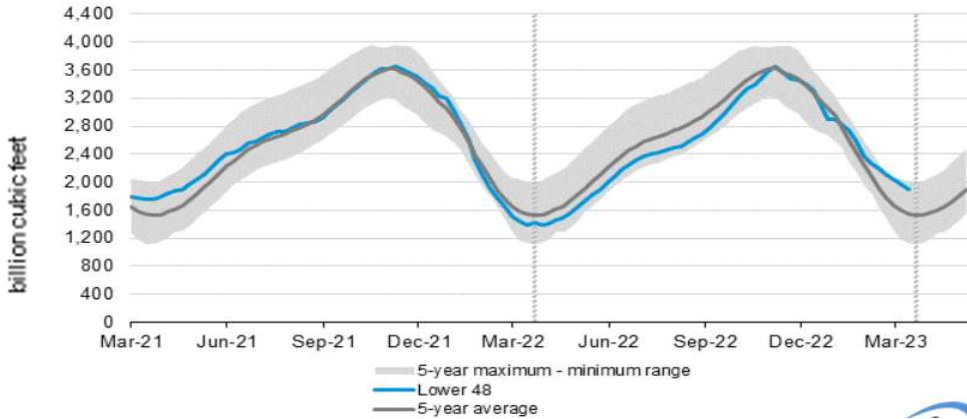
Mansfield Energy Corp
1025 Airport Pkwy
Gainesville, GA 30501
www.mansfield.energy

info@mansfieldoil.com
Phone: (800) 695 - 6626

NATURAL GAS NEWS



WEEKLY GAS IN UNDERGROUND STORAGE WITH 5-YR RANGE



for week ending March 17, 2023 | Released: March 23, 2023 | Next Release: March 30, 2023

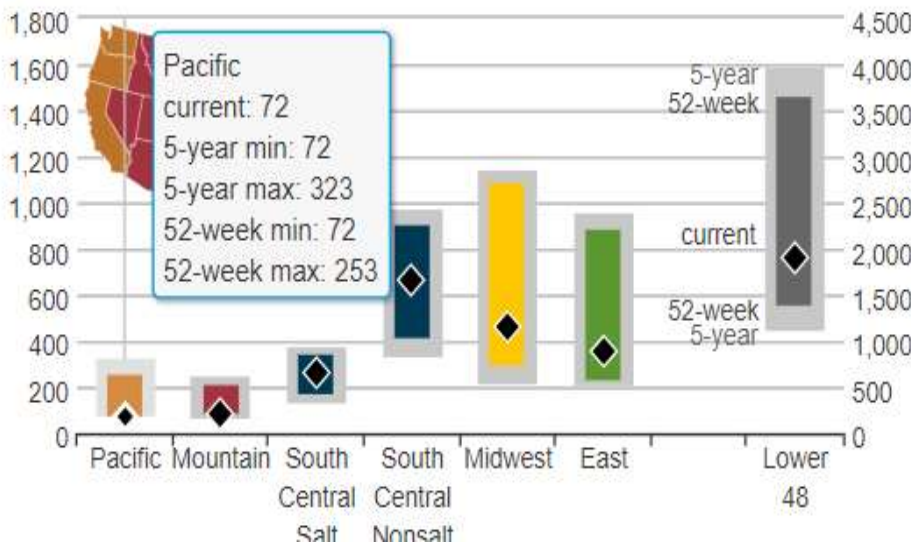
EIA Weekly Storage Actual and Surveys for

March 17, 2023

Released March 23, 2023

Range	-55 to -71
S&P Global	-70
FX Street	0
Investing.com	-75

UNDERGROUND WORKING NAT GAS STORAGE AS OF 03/17/2023



Total Working Gas In Storage

1972 BCF

- 58 BCF (LAST WEEK)
- 521 BCF (LAST YEAR)
- 378 BCF (5-YEAR AVG)

U.S. Natural Gas Supply

Gas Week -

Average Daily Values (BCF/D):

Last Year (BCF/d)

Dry Production -	95.0
Total Supply -	99.4

Last Week (BCF/d)

Dry Production -	101.0
Total Supply -	105.9

[Next Report: March 30]

U.S. Natural Gas Demand

Gas Week -

Average Daily Values (BCF/D):

Last Year (BCF/d)

Power -	23.5
Total Demand -	94.7

Last Week (BCF/d)

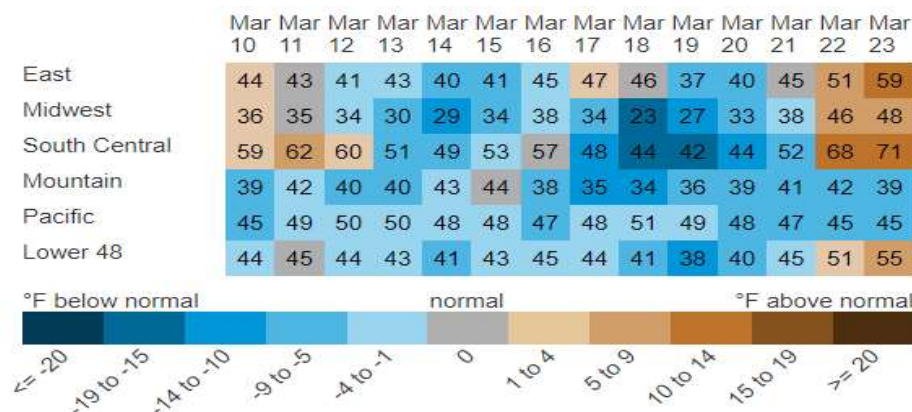
Power -	30.6
Total Demand -	115.7

[Next Report: March 30]

MANSFIELD EIA PREDICTION

-75

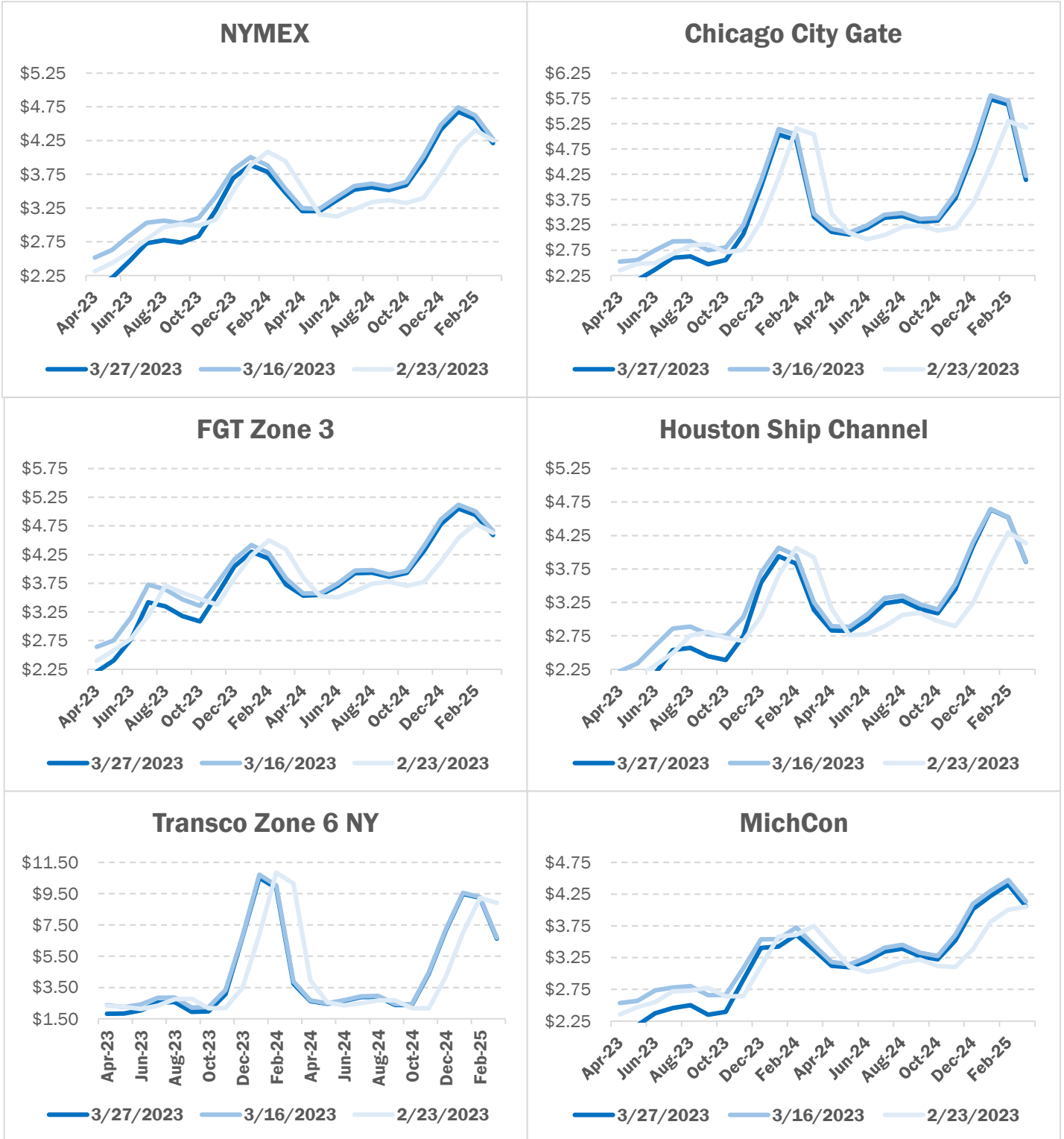
REGIONAL AVG TEMPERATURES AND DEPARTURE FROM NORMAL



NATURAL GAS NEWS

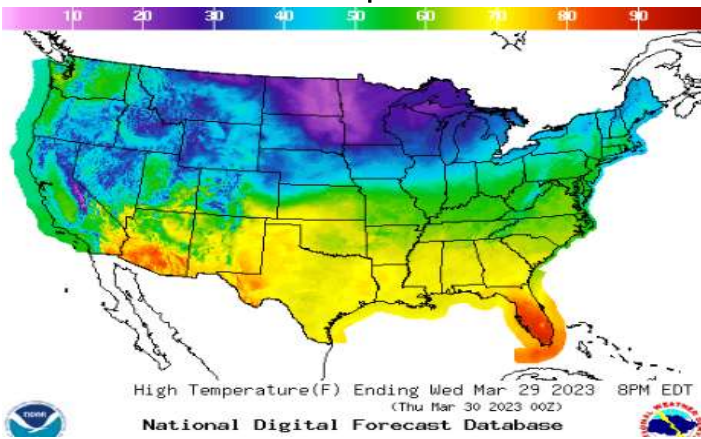


NATURAL GAS BASIS FUTURES

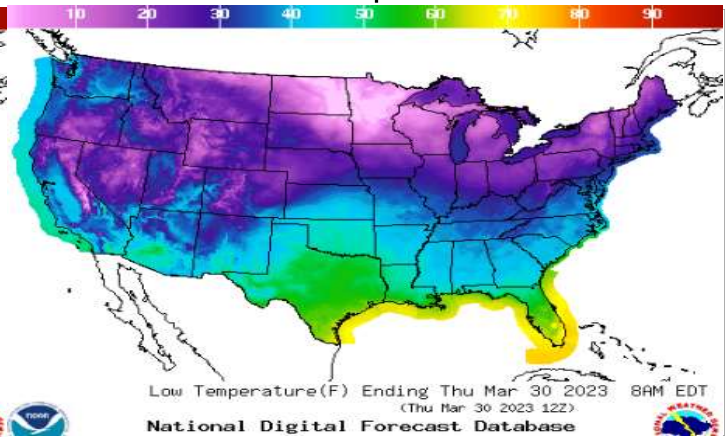


WEATHER - HIGH / LOW TEMPERATURE - TOMORROW

HIGH Temperature

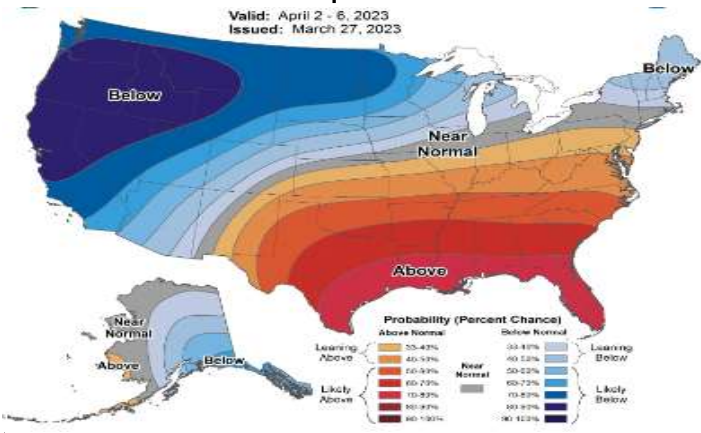


LOW Temperature

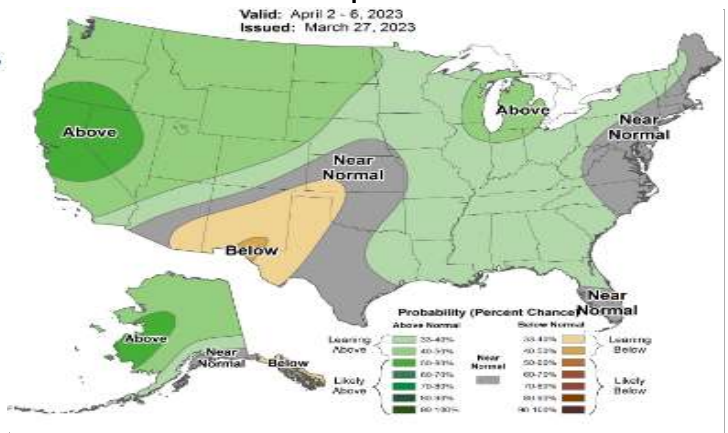


WEATHER - 6 - 10 DAY OUTLOOK - NOAA

Temperature

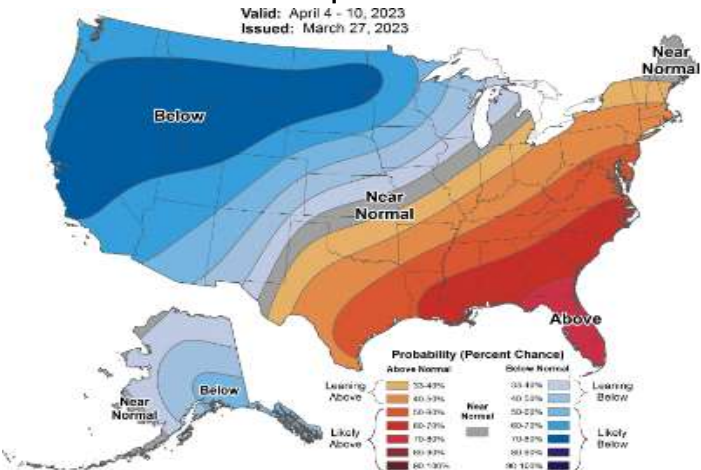


Precipitation



WEATHER - 8 - 14 DAY OUTLOOK - NOAA

Temperature



Precipitation

