

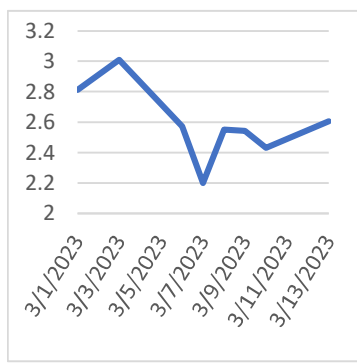
NATURAL GAS



NEWS

Tuesday, March 14, 2023

**Last Week's Prompt
NYMEX**



NYMEX NG Futures

Month	Close	Change
Apr-23	2.606	0.176
May-23	2.726	0.167
Jun-23	2.967	0.168
Jul-23	3.184	0.156
Aug-23	3.22	0.158
Sep-23	3.186	0.155
Oct-23	3.266	0.148
Nov-23	3.607	0.122
Dec-23	3.986	0.100
Jan-24	4.171	0.100
Feb-24	4.043	0.088
Mar-24	3.693	0.069
Apr-24	3.356	0.067
May-24	3.341	0.065
Jun-24	3.499	0.061
Jul-24	3.647	0.059
Aug-24	3.672	0.054
Sep-24	3.628	0.053
Oct-24	3.699	0.051
Nov-24	4.07	0.027
Dec-24	4.51	0.010
Jan-25	4.762	0.002
Feb-25	4.634	0.003
Mar-25	4.273	0.006
1 YR STRIP 2023	3.3879 3.4504	0.134 0.125

IN THE NEWS

US natgas futures jump 7% on rising flows to LNG export plants

U.S. natural gas futures jumped about 7% on Monday on forecasts for demand to rise next week with the amount of gas flowing to U.S. liquefied natural gas (LNG) export plants on track to hit a record high for the month. Prices jumped despite a 5% drop in crude futures earlier in the day and forecasts for less cold weather over the next two weeks than previously expected. Front-month gas futures for April delivery rose 17.6 cents, or 7.2%, to settle at \$2.606 per million British thermal units (mmbtu). On Friday, the contract closed at its lowest since Feb. 23. Oil prices fell on Monday along with equities as the collapse of Silicon Valley Bank raised fears of a fresh financial crisis. The gas market has been extremely volatile in recent weeks as traders bet on the latest weather forecasts. The front-month fell to a ... For more info go to <https://yhoo.it/3Z00Nqq>

US natgas flows to Freeport LNG's export plant in Texas rise

March 9 (Reuters) - The amount of natural gas flowing to U.S. liquefied natural gas (LNG) company Freeport LNG's export plant in Texas was on track to rise on Wednesday and Thursday following a drop on Tuesday after the plant exited an eight-month outage in February. Stay ahead of the market
Gas flows to the plant were on track to rise to 0.8 billion cubic feet per day (bcfd) on Wednesday and Thursday after dropping to 0.2 bcfd on Tuesday, according to data provider Refinitiv. The plant shut after a fire in June 2022 and gas flows to the facility peaked at about 1.7 bcfd on March 5, the Refinitiv Eikon data showed. When operating at full power, Freeport LNG, the second-biggest U.S. LNG export plant, can turn about 2.1 bcfd of gas into LNG for export. One billion cubic feet of gas is enough... For more info go to <https://yhoo.it/3yyRb7b>

Europe Set To Raise LNG Imports As Regasification Capacity Jumps

The EU is boosting its LNG import capacity and is ready to welcome even more LNG cargoes this year and in the coming years, Maros Sefcovic, European Commission Vice President for Interinstitutional Relations and Foresight, said on Thursday. The EU will soon have 35 LNG regasification terminals, up from 27 currently, and the regasification capacity is set to increase to 227 bcm from 178 bcm, Sefcovic tweeted today after holding what he described as a "productive" virtual meeting with international gas suppliers. The EU is getting ready for more LNG by reinforcing its import capacity infrastructure, Sefcovic said. ... For more info go to <https://bit.ly/3YMPPA8>

**Prompt Natural Gas (NG)
Daily Sentiment**

BEARISH



RESISTANCE
2.813 & 2.901
SUPPORT
2.576 & 2.427

NATURAL GAS

Futures	Close
NG	\$2.606
Volume	55,112
Open Int.	163,791

Contact Us



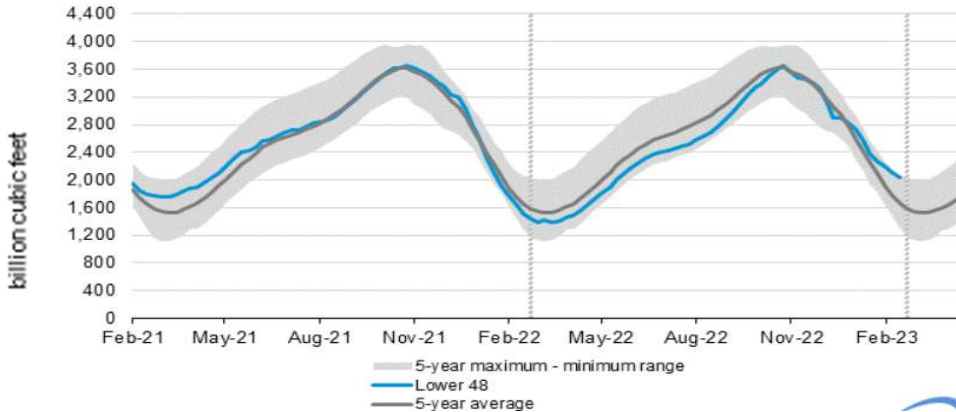
Mansfield Energy Corp
1025 Airport Pkwy
Gainesville, GA 30501
www.mansfield.energy

info@mansfieldoil.com
Phone: (800) 695 - 6626

NATURAL GAS NEWS



WEEKLY GAS IN UNDERGROUND STORAGE WITH 5-YR RANGE



for week ending March 03, 2023 | Released: March 09, 2023 | Next Release: March 16, 2023

EIA Weekly Storage Actual and Surveys for

March 3, 2023

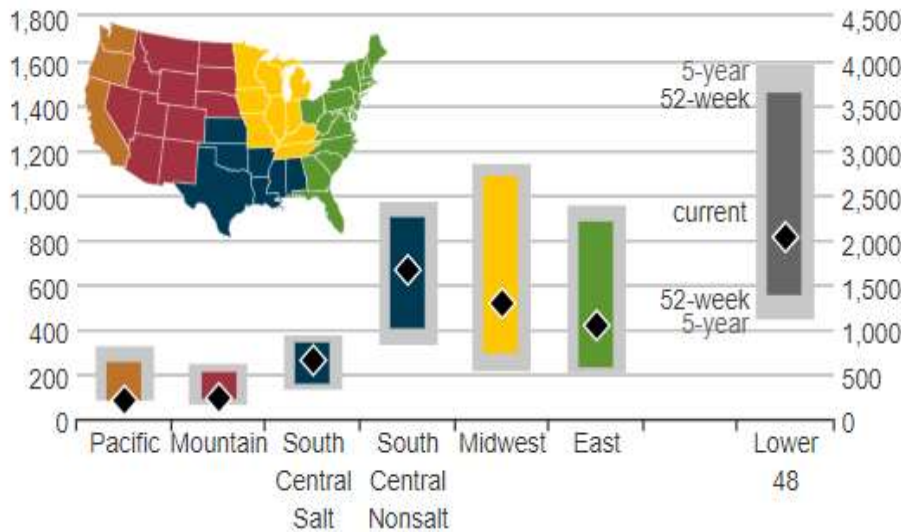
Released March 09, 2023

Range -70 to -107

S&P Global -70

Investing.com -80

UNDERGROUND WORKING NAT GAS STORAGE AS OF 02/24/2023



Total Working Gas In Storage

2030 BCF

-84 BCF (LAST WEEK)

493 BCF (LAST YEAR)

359 BCF (5-YEAR AVG)

U.S. Natural Gas Supply

Gas Week -

Average Daily Values (BCF/D):

Last Year (BCF/d)

Dry Production - 95.3

Total Supply - 100.2

Last Week (BCF/d)

Dry Production - 100.5

Total Supply - 105.2

[Next Report: March 16]

U.S. Natural Gas Demand

Gas Week -

Average Daily Values (BCF/D):

Last Year (BCF/d)

Power - 24.6

Total Demand - 105.2

Last Week (BCF/d)

Power - 29.9

Total Demand - 114.1

[Next Report: March 16]

REGIONAL AVG TEMPERATURES AND DEPARTURE FROM NORMAL

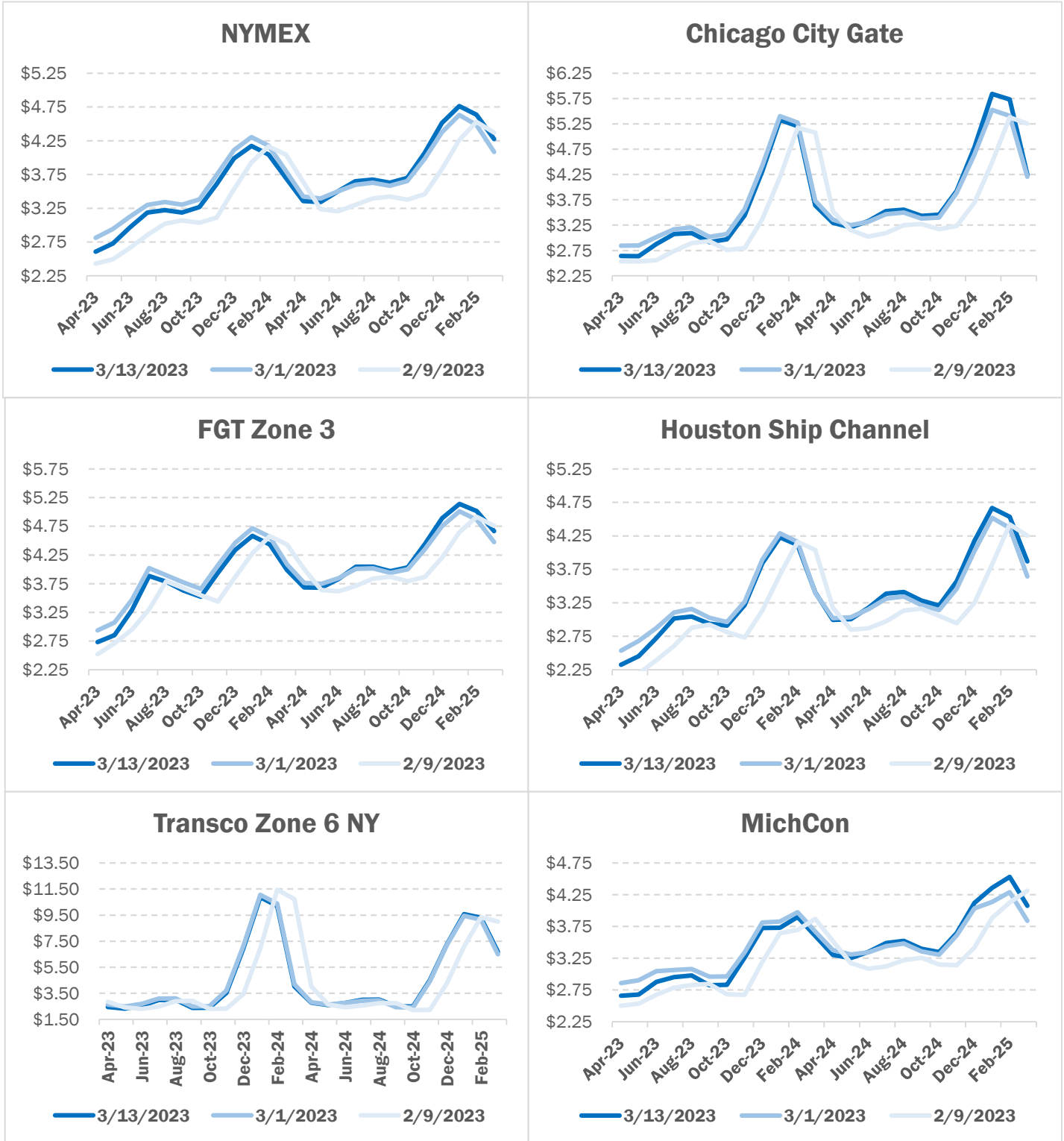
	Feb 24	Feb 25	Feb 26	Feb 27	Feb 28	Mar 01	Mar 02	Mar 03	Mar 04	Mar 05	Mar 06	Mar 07	Mar 08	Mar 09
East	49	39	44	45	47	49	49	49	49	49	50	48	44	45
Midwest	26	29	37	40	43	45	38	38	39	41	43	41	38	38
South Central	54	55	61	65	65	64	66	59	58	60	64	64	64	65
Mountain	25	33	35	35	34	32	31	33	34	36	37	36	38	39
Pacific	37	39	38	39	40	39	42	43	41	41	42	42	41	45
Lower 48	41	39	43	45	47	48	47	46	46	47	48	47	45	46

°F below normal: ≤ -20, -1 to -15, -1 to -10, 9 to -5, 4 to -1, 0, 1 to 4, 5 to 9, 9 to 14, 5 to 19, >= 20

NATURAL GAS NEWS



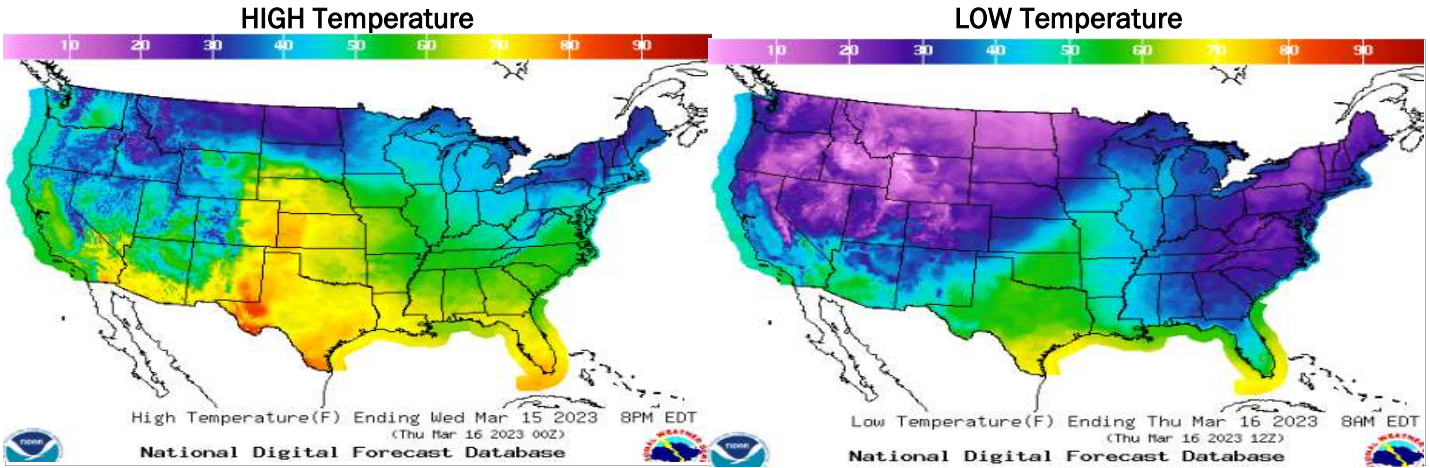
NATURAL GAS BASIS FUTURES



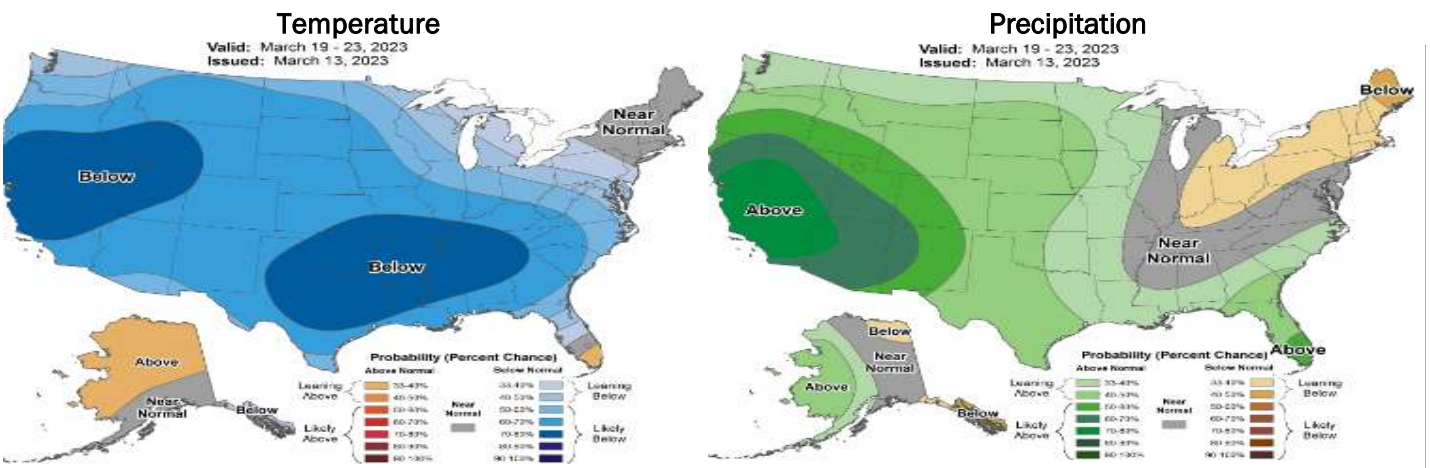
NATURAL GAS NEWS



WEATHER - HIGH / LOW TEMPERATURE - TOMORROW



WEATHER - 6 - 10 DAY OUTLOOK - NOAA



WEATHER - 8 - 14 DAY OUTLOOK - NOAA

