

# NATURAL GAS



NEWS

Thursday, January 6, 2022

**Last Week's Prompt  
NYMEX**



**NYMEX NG Futures**

Month	Close	Change
Feb-22	3.882	0.165
Mar-22	3.71	0.128
Apr-22	3.666	0.117
May-22	3.683	0.108
Jun-22	3.733	0.104
Jul-22	3.789	0.100
Aug-22	3.804	0.098
Sep-22	3.789	0.097
Oct-22	3.818	0.097
Nov-22	3.909	0.090
Dec-22	4.086	0.088
Jan-23	4.193	0.089
Feb-23	4.086	0.086
Mar-23	3.792	0.070
Apr-23	3.216	0.052
May-23	3.143	0.042
Jun-23	3.177	0.040
Jul-23	3.216	0.038
Aug-23	3.226	0.037
Sep-23	3.212	0.034
Oct-23	3.245	0.033
Nov-23	3.35	0.025
Dec-23	3.562	0.018
Jan-24	3.678	0.016
1 YR STRIP	3.8385	0.107
2021	3.757	0.115

**IN THE NEWS**

**U.S. Natural Gas Market: Demand Is Close To An All-Time High**

Last week (ending Dec. 31), the number of heating degree days (HDDs) plunged by almost 21% w-o-w (from 166 to 132). The total "energy demand" (as measured in total degree days or TDDs) was 20% below last year's level and as much as 28% below the 30-year average. This week (ending Jan. 7), the weather conditions in the contiguous United States have been cooling down quite substantially. I estimate that the number of nationwide HDDs will plunge by more than 60% w-o-w (from 132 to 212). The average daily consumption of natural gas (in the contiguous United States) should be somewhere between 113 bcf/d and 116 bcf/d. The total "energy demand" (measured in TDDs) should rise by 21% y-o-y, while the deviation from the norm will turn sharply positive (+11%). Next week (ending Jan. 14), the weather conditions are expected ... For more info go to <https://bit.ly/3HJ9F7c>

**US becomes world's top exporter of liquified natural gas**

The United States is now the world's leading exporter of liquified natural gas as Europe's energy crisis and shortages in China send demand for American shipments soaring. LNG exports from the United States topped 7 million tonnes (7.7 million tons) in December, according to ship-tracking data from ICIS LNG Edge, narrowly edging out rival producers Qatar and Australia for the first time. The United States only shipped its first LNG cargo from the lower 48 states in 2016, and has risen to become the world's top exporter in just six years as a shale gas revolution boosted domestic production and turned the country into a powerful force in global energy markets. The United States will be the biggest exporter in the world through 2022 as a whole, according to forecasts from ICIS and the US Ene... For more info go to <https://cnn.it/3qS3NC6>

**Gas prices surge in Europe over tight Russian supplies**

European gas prices soared more than 30% on Tuesday after low supplies from Russia reignited concerns about an energy crunch as colder weather approaches. A pipeline which normally delivers gas from Siberia to Europe was sending flows from Germany to Poland on Tuesday for the 15th successive day, instead of the usual westward flow into Europe. Supplies of Russian gas from Ukraine to Slovakia were also subdued. Russian energy exports have been in the spotlight during a broader standoff between Russia and the West, including over a Russian troop buildup near neighbouring Ukraine, which is trying to forge closer ties with NATO. Ambassadors from the NATO military alliance and Russian officials are scheduled to meet next week as both sides seek dialogue to prevent open conflict over Ukraine. Some European Union lawmakers... For more info go to <https://reut.rs/3sZYMDB>

**Prompt Natural Gas (NG)  
Daily Sentiment**

**BEARISH**



RESISTANCE  
3.768 & 3.827  
SUPPORT  
3.621 & 3.533

**NATURAL GAS**

Futures	Close
NG	\$3.88
Volume	114,957
Open Int.	69,422

**Contact Us**



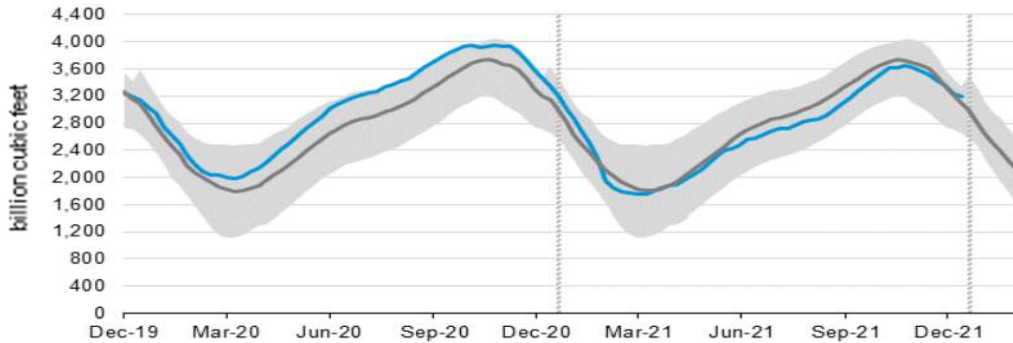
**Mansfield Energy Corp**  
1025 Airport Pkwy  
Gainesville, GA 30501  
[www.mansfield.energy](http://www.mansfield.energy)

info@mansfieldoil.com  
Phone: (800) 695 - 6626

# NATURAL GAS NEWS



## WEEKLY GAS IN UNDERGROUND STORAGE WITH 5-YR RANGE



for week ending December 31, 2021 | Released: January 06, 2022 | Next Release: January 13, 2022

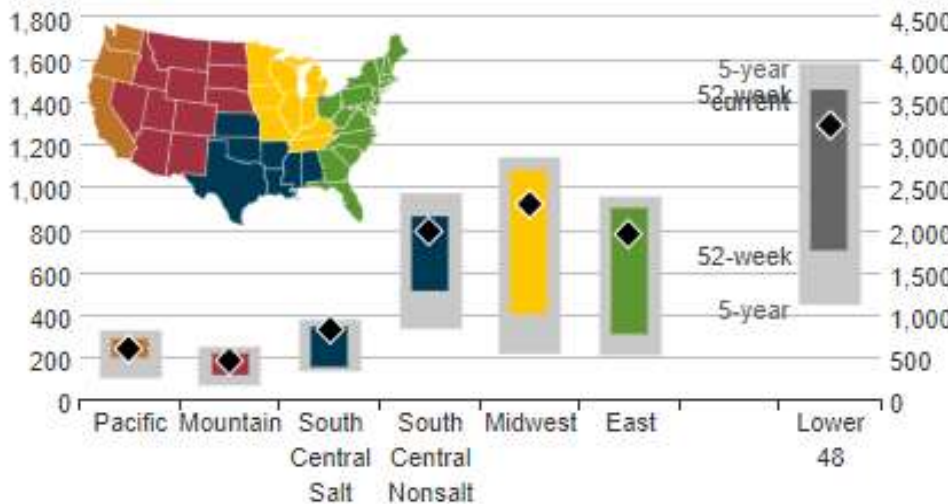
**EIA Weekly Storage Actual and Surveys for December 31, 2021**

Released January 06, 2022

Range	-50 to -59
S&P Platts	-50
NGI	-50
Investing.com	-136

## UNDERGROUND WORKING NAT GAS STORAGE AS OF 12/24/2021

billion cubic feet



## Total Working Gas In Storage

**-3195 BCF**

- 31 BCF (LAST WEEK)
- 126 BCF (LAST YEAR)
- 19 BCF (5-YEAR AVG)

## U.S. Natural Gas Supply Gas Week 12/09 - 12/15

Average Daily Values (BCF/D):

Last Year (BCF/d)

Dry Production -	90.6
Total Supply -	95.9

Last Week (BCF/d)

Dry Production -	95.4
Total Supply -	100.4

[Next Report: January 06]

## U.S. Natural Gas Supply Gas Week -

Average Daily Values (BCF/D):

Last Year (BCF/d)

Dry Production -	27.6
Total Supply -	112.10

Last Week (BCF/d)

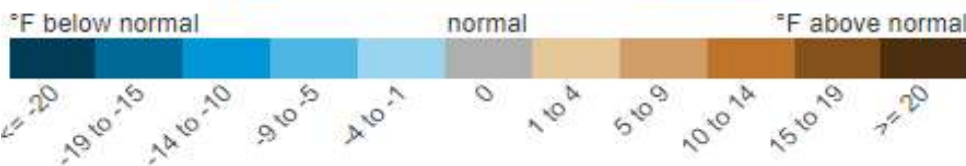
Dry Production -	28.7
Total Supply -	110.4

[Next Report: January 06]

## REGIONAL AVG TEMPERATURES AND DEPARTURE FROM NORMAL

degrees Fahrenheit

	Dec 17	Dec 18	Dec 19	Dec 20	Dec 21	Dec 22	Dec 23	Dec 24	Dec 25	Dec 26	Dec 27	Dec 28	Dec 29	Dec 30
East	54	50	47	37	38	41	37	41	48	50	45	48	50	51
Midwest	34	35	30	32	30	27	33	42	46	38	41	37	33	34
South Central	64	60	45	44	47	49	55	63	66	66	65	67	64	63
Mountain	31	28	32	35	37	40	42	41	38	36	31	28	27	29
Pacific	43	45	45	43	45	47	47	46	42	39	37	37	38	40
Lower 48	48	46	42	38	39	40	41	45	49	47	45	45	45	46



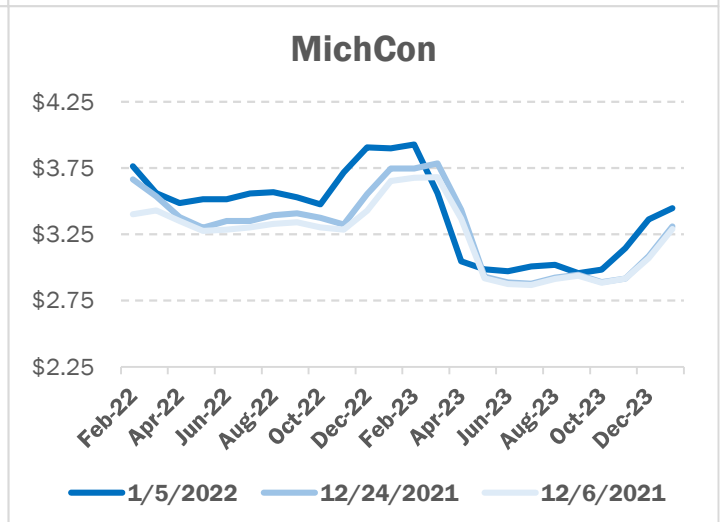
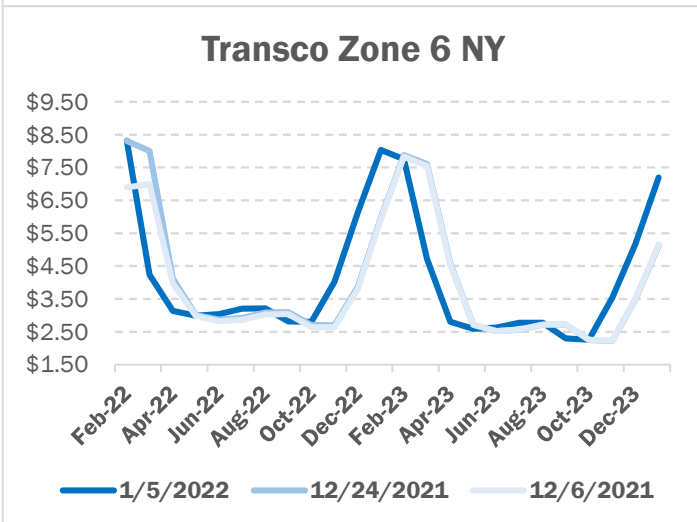
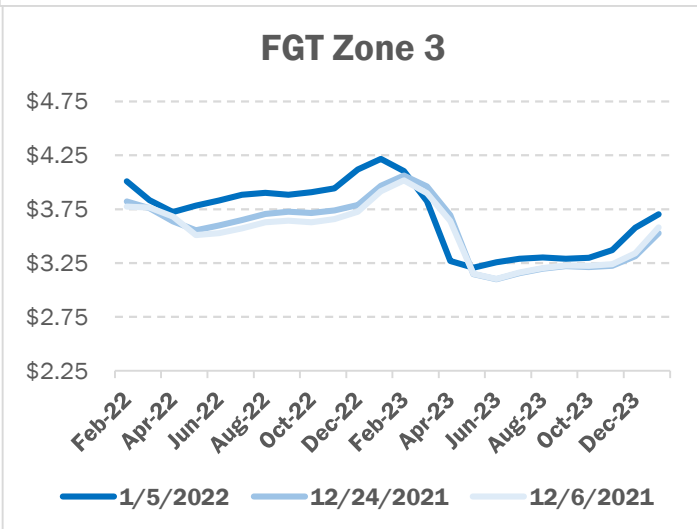
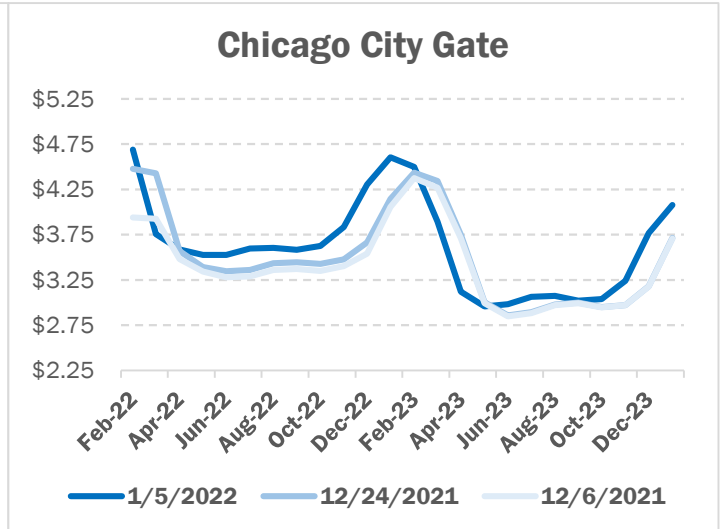
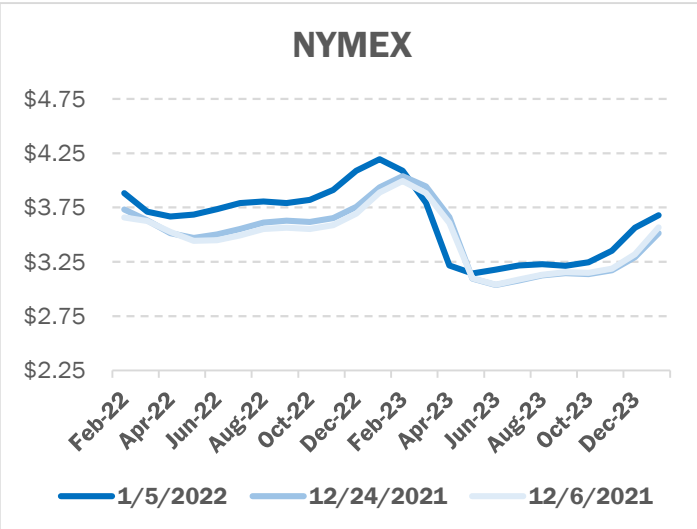
## MANSFIELDS' EIA STORAGE FORECAST

**-46 BCF**

# NATURAL GAS NEWS



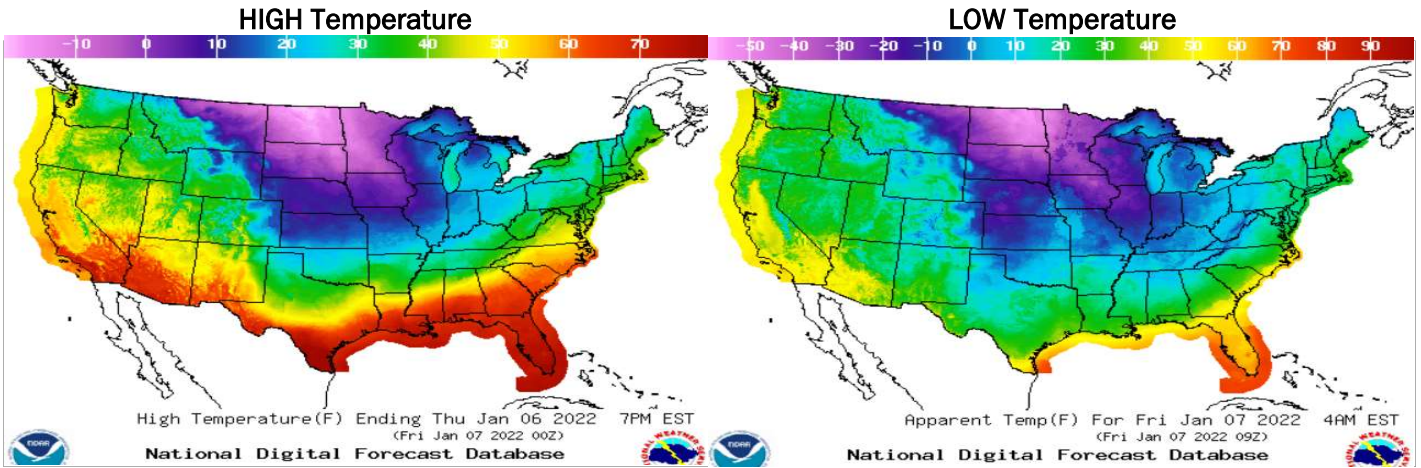
## NATURAL GAS BASIS FUTURES



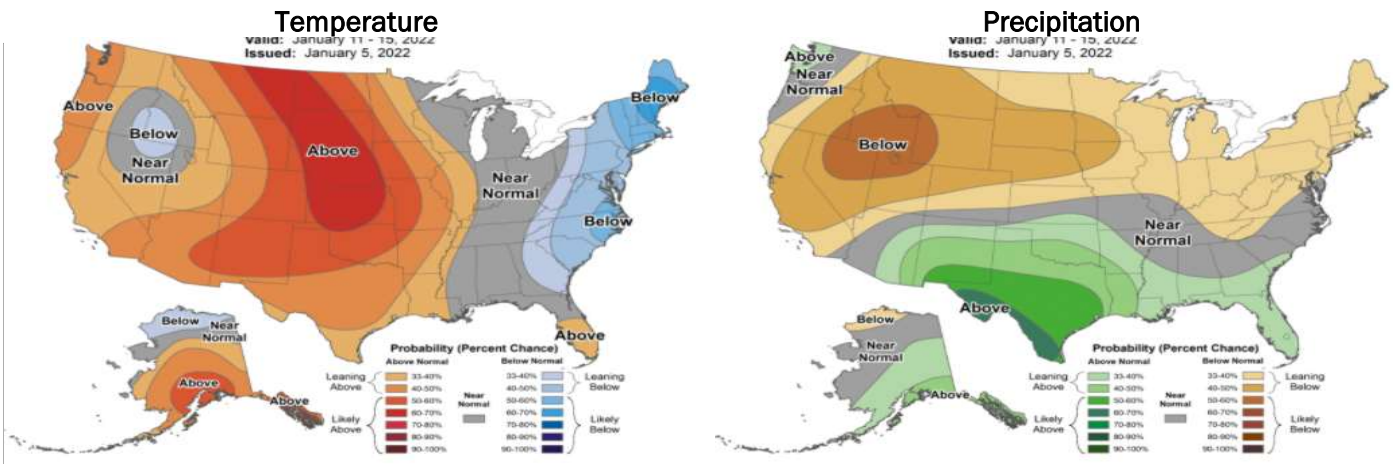
# NATURAL GAS NEWS



## WEATHER - HIGH / LOW TEMPERATURE - TOMORROW



## WEATHER - 6 - 10 DAY OUTLOOK - NOAA



## WEATHER - 8 - 14 DAY OUTLOOK - NOAA

