

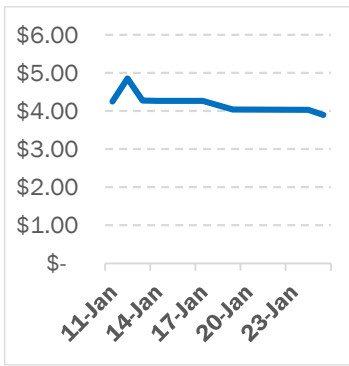
NATURAL GAS



NEWS

Thursday, January 27, 2022

**Last Week's Prompt
NYMEX**



NYMEX NG Futures

Month	Close	Change
Mar-22	3.894	(0.133)
Apr-22	3.883	0.008
May-22	3.92	0.078
Jun-22	3.97	0.094
Jul-22	4.027	0.102
Aug-22	4.039	0.058
Sep-22	4.021	0.028
Oct-22	4.044	0.069
Nov-22	4.135	0.136
Dec-22	4.303	0.217
Jan-23	4.396	0.144
Feb-23	4.258	(0.089)
Mar-23	3.922	(0.287)
Apr-23	3.261	(0.614)
May-23	3.188	(0.047)
Jun-23	3.222	0.059
Jul-23	3.264	0.067
Aug-23	3.276	0.037
Sep-23	3.267	0.018
Oct-23	3.303	0.066
Nov-23	3.414	0.143
Dec-23	3.627	0.246
Jan-24	3.752	0.158
Feb-24	3.641	(0.079)
1 YR STRIP	4.0742	0.059
2021	3.9748	0.038

IN THE NEWS

Has The Oil Market Flipped Into Surplus Territory?

The energy sector has continued to defy the broad market selloff in the new year, with seven of Tuesday's top eight gainers on the S&P 500 being oil and gas stocks, thanks in large part to growing geopolitical tensions. WTI crude for March delivery closed +2.8% to settle at \$85.60/bbl after losing 2.2% on Monday, while March Brent crude ended +2.2% at \$88.20/bbl. "Tensions are seriously heightened between Russia and the West, and if there is an invasion of Ukraine when energy markets are already so tight, the additional risk premium should continue to support prices and push it even higher," Pratibha Thaker at the Economist Intelligence Unit has told MarketWatch. Top gainers were: APA Corp. (NASDAQ:APA) which closed +8.3% to top all major U.S. energy equities; Occidental Petroleum (NYSE:OXY) +8.1%, Halliburton (NY... For more info go to <https://bit.ly/34cxaHE>

US natural gas storage looks to record largest weekly draw of heating seas

US natural gas storage volumes likely registered the largest drop of the season for the week ended Jan. 21, flipping the surplus to the five-year average to a deficit, as an even larger draw is expected for the week in progress due to colder temperatures and production declines. The US Energy Information Administration is expected to report a 214 Bcf withdrawal for the week ended Jan. 21, according to a survey of analysts by S&P Global Platts. Responses to the survey ranged from a 200-227 Bcf withdrawal. The EIA plans to release its weekly storage report on Jan. 27 at 10:30 am ET. A 214 Bcf withdrawal would be more than the five-year average draw of 161 Bcf and the 137 Bcf pull reported during the corresponding week in 2021. It would reduce stocks to 2.596 Tcf. The deficit to last year wou... For more info go to <https://bit.ly/3KQNgqy>

U.S. Natural Gas Prices Jump On High Demand

U.S. natural gas prices surged by 6 percent early on Wednesday as frigid weather in many parts of the United States lifted demand, and commodity markets eyed the Russia-Ukraine crisis, fearing disruptions of natural gas flows to Europe in the event of a conflict. At 9:57 a.m. EST on Wednesday, the U.S. benchmark price, Henry Hub, was rising by 5.90% to \$4.298 per million British thermal units (MMBtu). Natural gas prices reflected expected high to very high demand for space heating and electricity in the United States in the coming days. According to estimates from NatGasWeather.com for the week January 26 to February 2, national natural gas demand is expected to be strong through the weekend as a series of frigid blasts sweep across the Midwest, Plains, and East with snow showers and frosty lows of -20s to 20s. Lo... For more info go to <https://bit.ly/3AQvpw5>

Prompt Natural Gas (NG)

Daily Sentiment

BEARISH



RESISTANCE

4.201 & 4.367

SUPPORT

3.863 & 3.691

NATURAL GAS

Futures	Close
NG	\$3.894
Volume	2,791
Open Int.	5,028

Contact Us



Mansfield Energy Corp

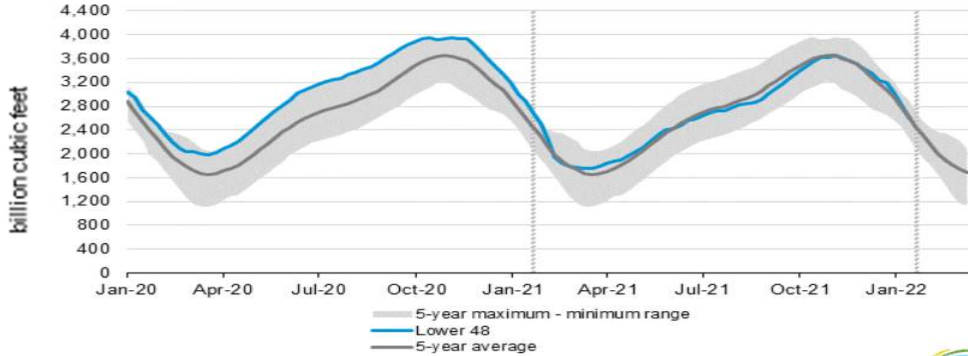
1025 Airport Pkwy
Gainesville, GA 30501
www.mansfield.energy

info@mansfieldoil.com
Phone: (800) 695 - 6626

NATURAL GAS NEWS



WEEKLY GAS IN UNDERGROUND STORAGE WITH 5-YR RANGE



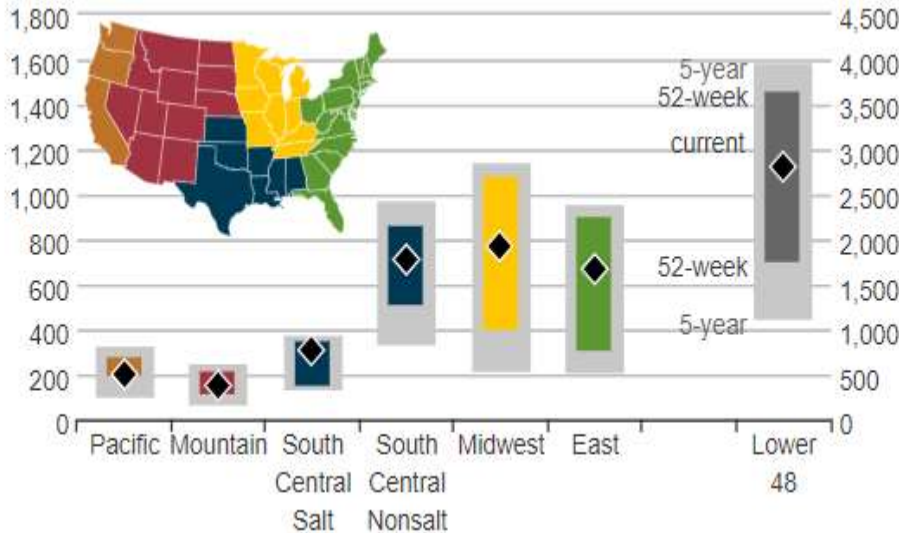
for week ending January 14, 2022 | Released: January 20, 2022 | Next Release: January 27, 2022

EIA Weekly Storage Actual and Surveys for January 14, 2022

Released January 20, 2022

Range	-214 to -227
S&P Platts	-214
NGI	-198
Investing.com	-206

UNDERGROUND WORKING NAT GAS STORAGE AS OF 01/20/2022



Total Working Gas In Storage

2810 BCF

- 206 BCF (LAST WEEK)
- 226 BCF (LAST YEAR)
- 33 BCF (5-YEAR AVG)

U.S. Natural Gas Supply Gas Week 01/13 - 01/19

Average Daily Values (BCF/D):

Last Year (BCF/d)

Dry Production - 91.3

Total Supply - 97.2

Last Week (BCF/d)

Dry Production - 93.7

Total Supply - 100.0

[Next Report: January 27]

U.S. Natural Gas Supply Gas Week -

Gas Week -

Average Daily Values (BCF/D):

Last Year (BCF/d)

Dry Production - 27.6

Total Supply - 116.1

Last Week (BCF/d)

Dry Production - 30.4

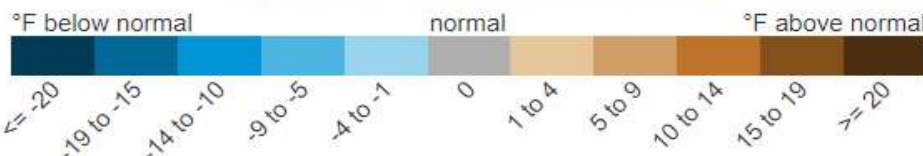
Total Supply - 131.9

[Next Report: January 27]

REGIONAL AVG TEMPERATURES AND DEPARTURE FROM NORMAL

degrees Fahrenheit

	Jan 07	Jan 08	Jan 09	Jan 10	Jan 11	Jan 12	Jan 13	Jan 14	Jan 15	Jan 16	Jan 17	Jan 18	Jan 19	Jan 20
East	40	32	38	37	28	34	39	39	26	30	33	35	37	37
Midwest	19	20	25	16	22	30	35	30	22	20	23	32	25	12
South Central	47	49	55	45	44	48	53	53	44	41	44	50	55	35
Mountain	41	37	33	34	36	39	41	39	35	37	39	39	32	31
Pacific	51	46	47	49	52	54	52	52	50	52	50	49	49	52
Lower 48	39	35	39	36	34	39	43	42	33	34	36	39	39	34



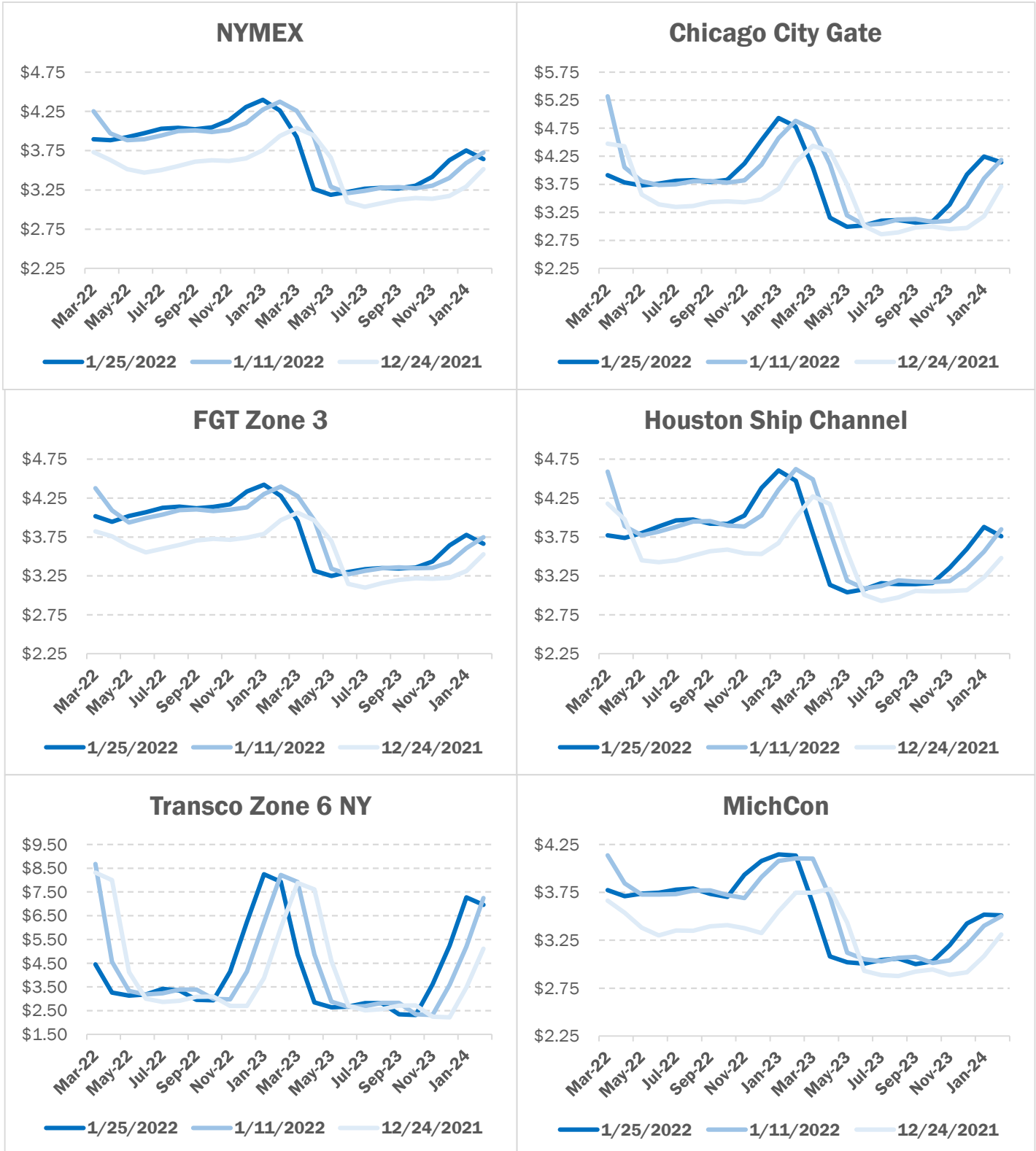
[For week ending January 22nd]

-265

NATURAL GAS NEWS



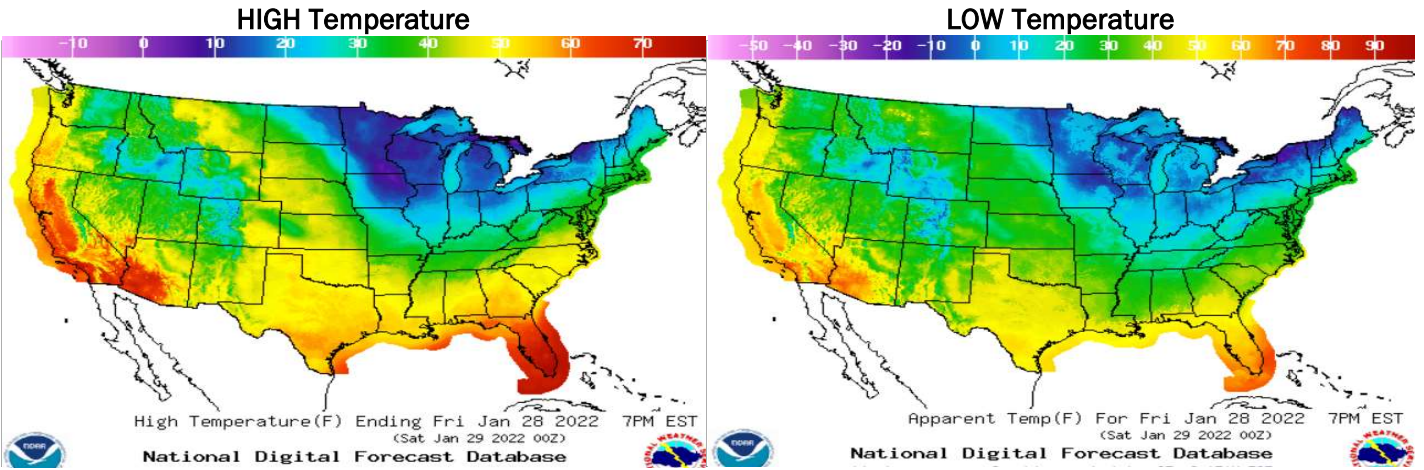
NATURAL GAS BASIS FUTURES



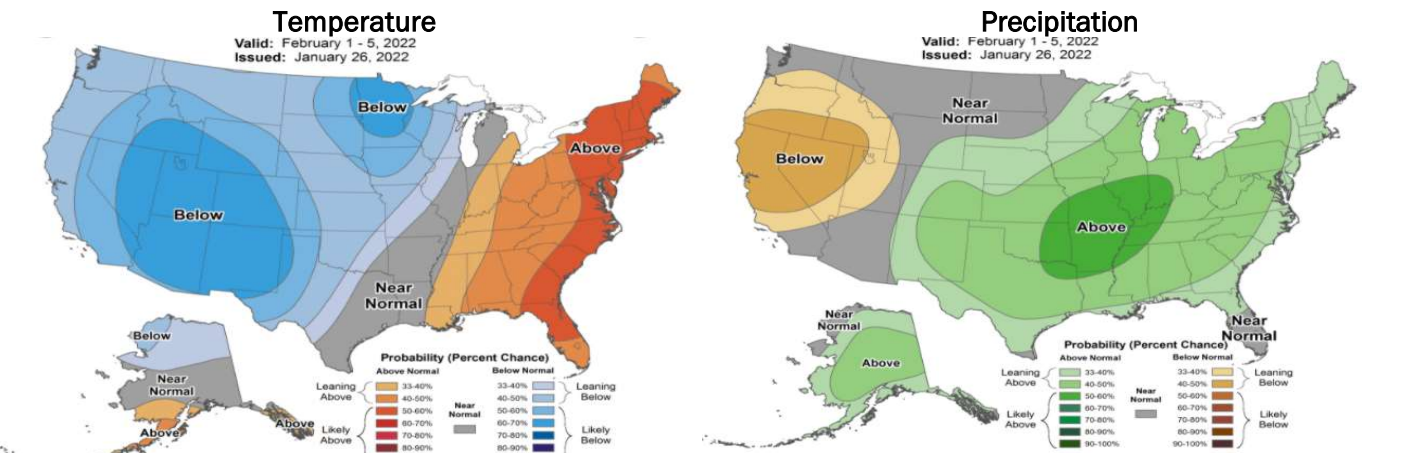
NATURAL GAS NEWS



WEATHER - HIGH / LOW TEMPERATURE - TOMORROW



WEATHER - 6 - 10 DAY OUTLOOK - NOAA



WEATHER - 8 - 14 DAY OUTLOOK - NOAA

