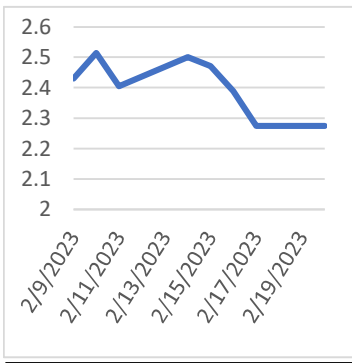


NATURAL GAS



Tuesday, February 21, 2023

Last Week's Prompt NYMEX



NYMEX NG Futures

Month	Close	Change
Mar-23	2.275	0.000
Apr-23	2.352	0.000
May-23	2.496	0.000
Jun-23	2.682	0.000
Jul-23	2.878	0.000
Aug-23	2.933	0.000
Sep-23	2.906	0.000
Oct-23	2.979	0.000
Nov-23	3.433	0.000
Dec-23	3.826	0.000
Jan-24	4.043	0.000
Feb-24	3.916	0.000
Mar-24	3.535	0.000
Apr-24	3.159	0.000
May-24	3.132	0.000
Jun-24	3.247	0.000
Jul-24	3.357	0.000
Aug-24	3.389	0.000
Sep-24	3.334	0.000
Oct-24	3.403	0.000
Nov-24	3.76	0.000
Dec-24	4.187	0.000
Jan-25	4.446	0.000
Feb-25	4.306	0.000
1 YR STRIP 2023	3.0599	0.000
	3.1649	0.000

IN THE NEWS

UK remains top destination for US LNG supplies

According to the Department of Energy's newest LNG monthly report, US terminals have sent 69.3 Bcf of LNG to the UK in December, followed by the Netherlands (39.9 Bcf), France (38.3 Bcf), Spain (33.8 Bcf), and South Korea (24.7 Bcf). These five countries took 60.7 percent of total US LNG exports in December. The UK took 82.8 Bcf of US LNG in November, followed by France with 50.7 Bcf. France was the top destination for US LNG exports in October and September while the Netherlands took on this role in August. Prior to August, France was also the top destination for five straight months. The US has exported in total 339.6 Bcf of LNG in December, down by 1.6 percent compared to same month in 2021 but up 12.3 percent from the prior month, the DOE report shows. US terminals shipped 111 LNG cargoes in December. This com... For more info go to <https://bit.ly/3xDn4eI>

Spending by U.S. natural gas consumers rose 37%

The increased spending followed rising U.S. natural gas prices, particularly in the electric power sector across the southern United States. Total U.S. natural gas consumption remained virtually unchanged from 2020 to 2021. In every U.S. state, the amount spent on natural gas rose in 2021. The increase was particularly high in some states, more than doubling in Oklahoma and Texas. Natural gas spending rose by more than 50% in five additional states, four of which were in the surrounding area: New Mexico, Arkansas, Louisiana, and Arizona. In February 2021, a winter storm in Texas and Oklahoma led to natural gas price spikes and depleted inventories, which significantly increased spending on natural gas. The fifth state where natural gas spending rose by more than 50% was North Dakota. In th... For more info go to <https://bit.ly/3Z8L18P>

India's Largest Natural Gas Company Seeks Stake In U.S

GAIL India, the biggest natural gas company in the country is looking to buy an interest in an LNG export project in the United States. The move comes as competition for limited LNG supply intensifies despite a slump in prices due to Europe's lower demand for the superchilled fuel. According to an expression of interest, published by the Indian company on its website, it is open to acquiring a stake in either an existing LNG export facility or one that is still in the planning stage. ... For more info go to <https://bit.ly/41aVl2d>

Prompt Natural Gas (NG) Daily Sentiment

BEARISH



RESISTANCE
2.481 & 2.609
SUPPORT
2.264 & 2.175

NATURAL GAS

Futures	Close
NG	\$2.275
Volume	33,235
Open Int.	46,012

Contact Us



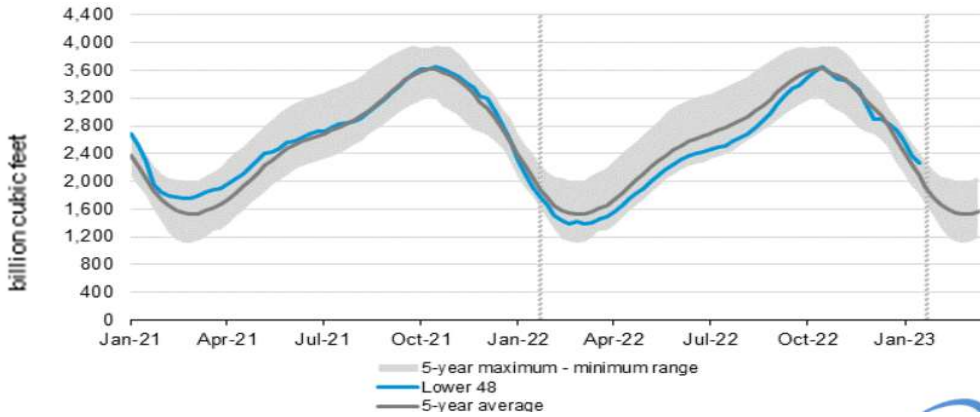
Mansfield Energy Corp
1025 Airport Pkwy
Gainesville, GA 30501
www.mansfield.energy

info@mansfieldoil.com
Phone: (800) 695 - 6626

NATURAL GAS NEWS



WEEKLY GAS IN UNDERGROUND STORAGE WITH 5-YR RANGE



for week ending February 10, 2023 | Released: February 16, 2023 | Next Release: February 23, 2023

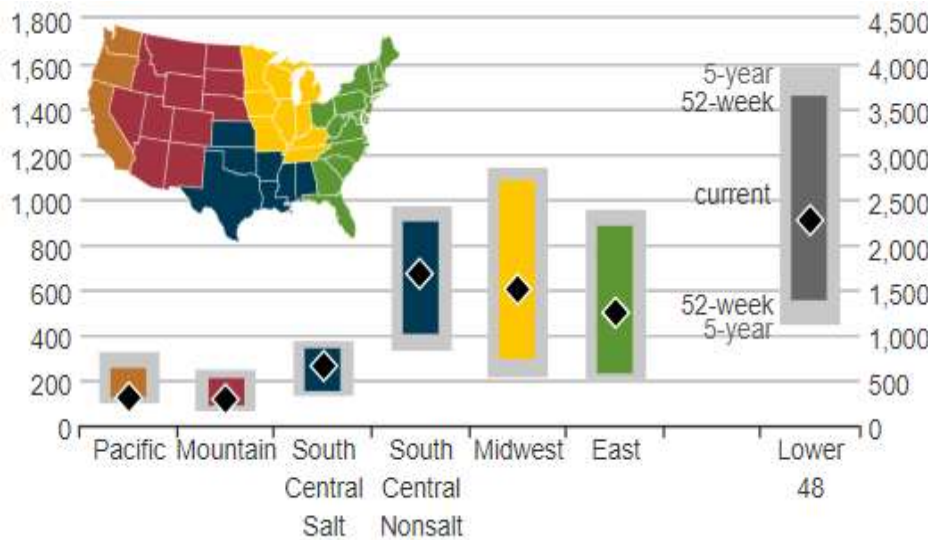
EIA Weekly Storage Actual and Surveys for

February 10, 2023

Released February 16, 2023

Range	-100 to -109
S&P Global	-109
FX Street	-109
Investing.com	-109

UNDERGROUND WORKING NAT GAS STORAGE AS OF 2/23/203



Total Working Gas In Storage

2583 BCF

-151 BCF (LAST WEEK)
222 BCF (LAST YEAR)
107 BCF (5-YEAR AVG)

U.S. Natural Gas Supply

Gas Week -

Average Daily Values (BCF/D):

<u>Last Year (BCF/d)</u>	
Dry Production -	95.1
Total Supply -	101.3
<u>Last Week (BCF/d)</u>	
Dry Production -	98.8
Total Supply -	104.4

[Next Report: February 23]

U.S. Natural Gas Demand

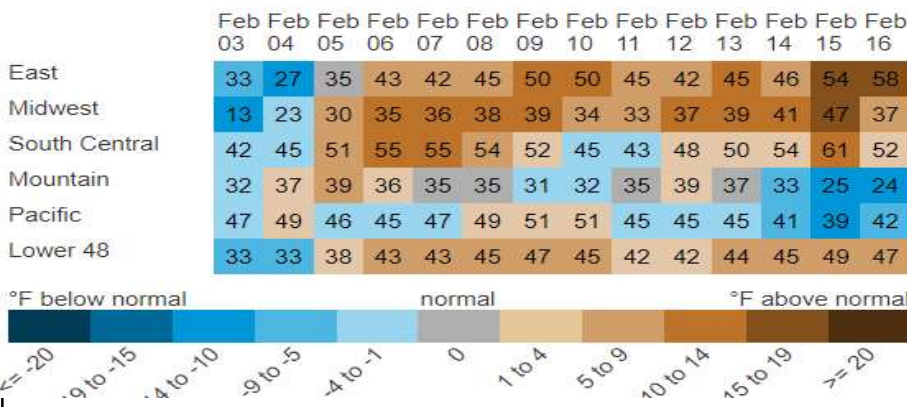
Gas Week -

Average Daily Values (BCF/D):

<u>Last Year (BCF/d)</u>	
Power -	27.7
Total Demand -	25.5
<u>Last Week (BCF/d)</u>	
Power -	31.0
Total Demand -	123.4

[Next Report: February 23]

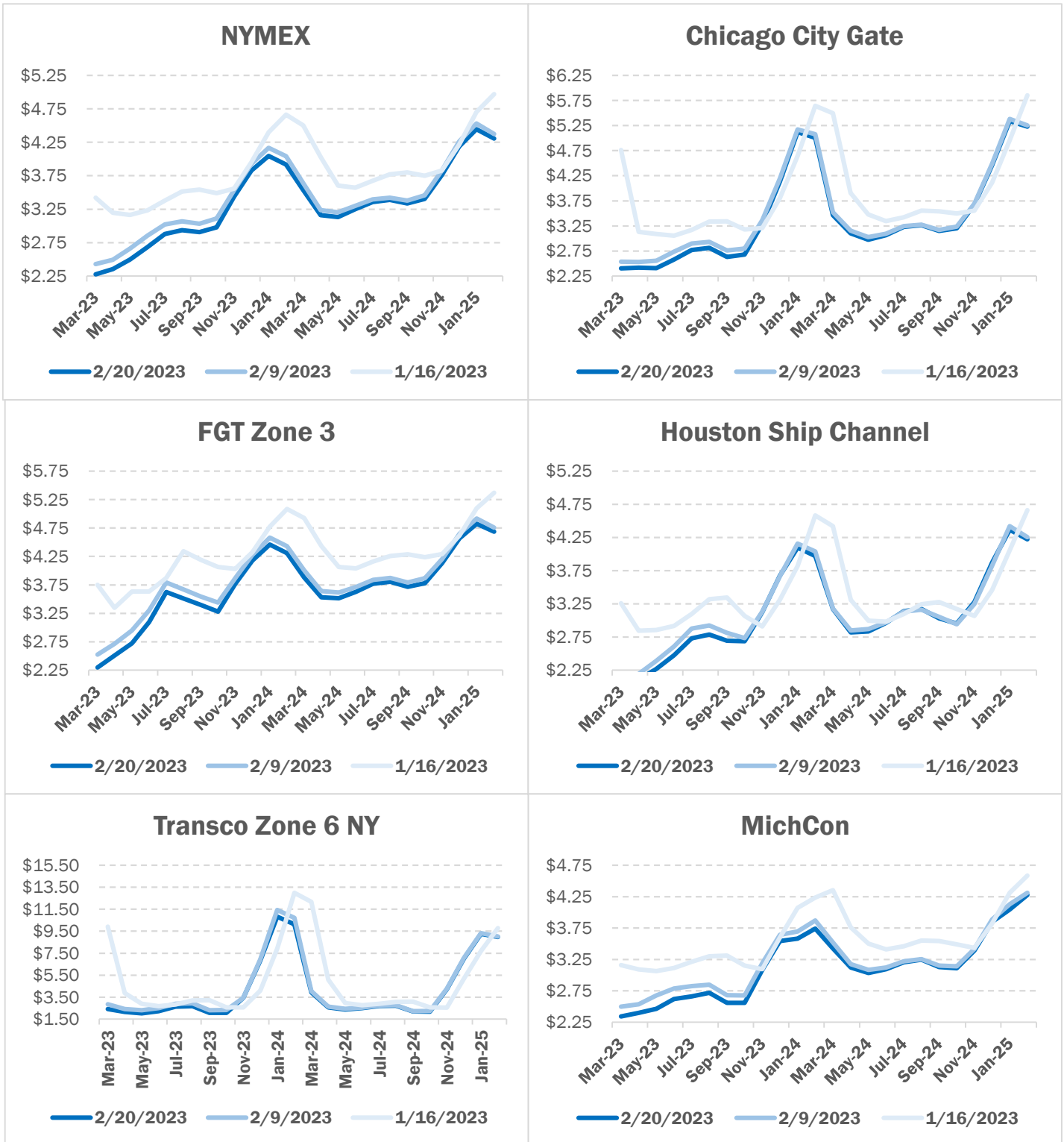
REGIONAL AVG TEMPERATURES AND DEPARTURE FROM NORMAL



NATURAL GAS NEWS

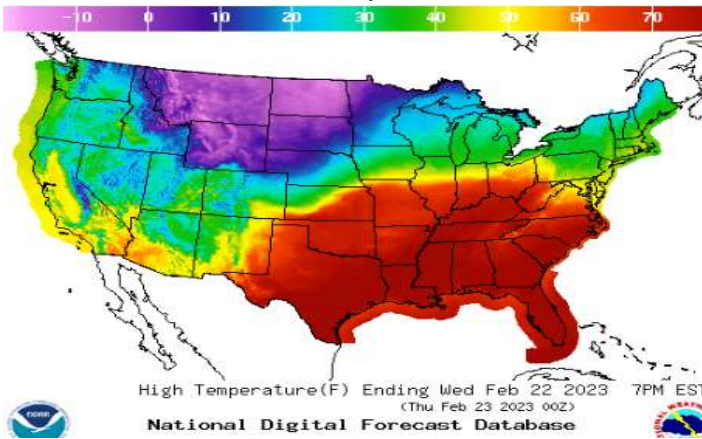


NATURAL GAS BASIS FUTURES

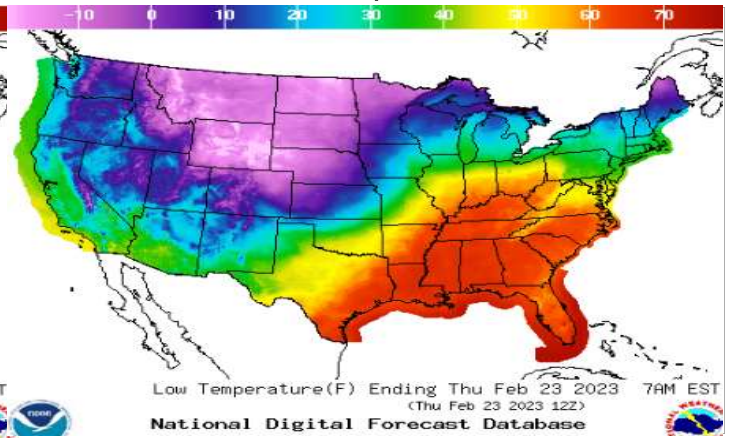


WEATHER - HIGH / LOW TEMPERATURE - TOMORROW

HIGH Temperature

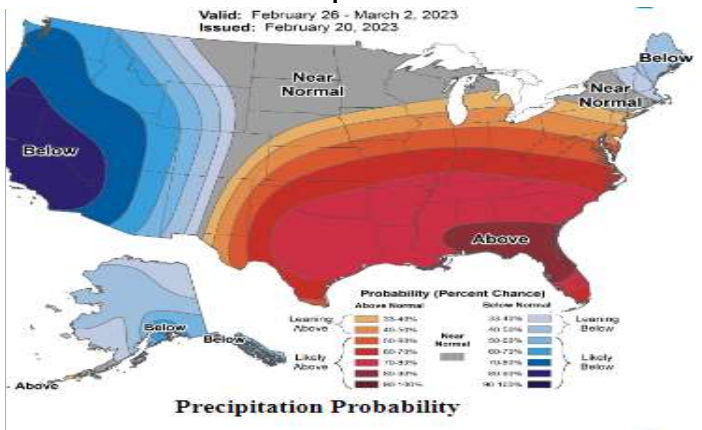


LOW Temperature

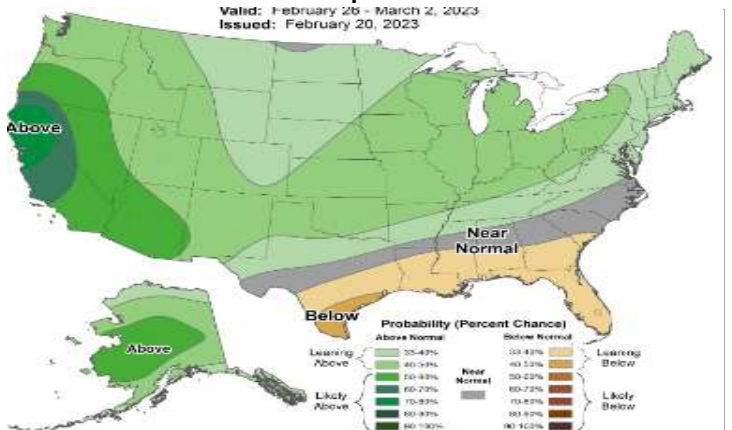


WEATHER - 6 - 10 DAY OUTLOOK - NOAA

Temperature

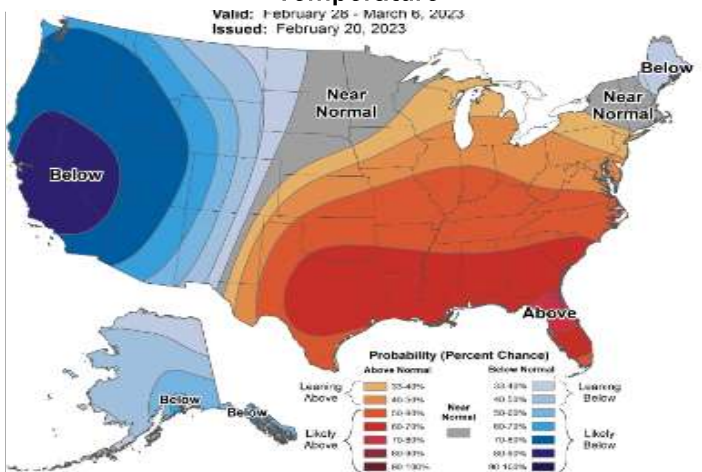


Precipitation



WEATHER - 8 - 14 DAY OUTLOOK - NOAA

Temperature



Precipitation

