

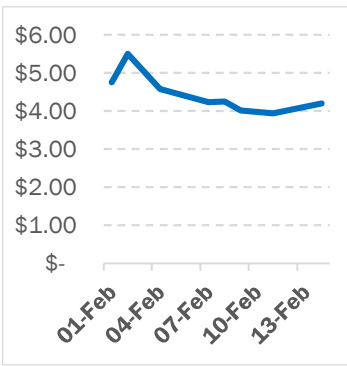
NATURAL GAS



NEWS

Tuesday, February 15, 2022

**Last Week's Prompt
NYMEX**



NYMEX NG Futures

Month	Close	Change
Mar-22	4.195	0.254
Apr-22	4.16	0.225
May-22	4.189	0.219
Jun-22	4.238	0.214
Jul-22	4.29	0.209
Aug-22	4.3	0.206
Sep-22	4.282	0.203
Oct-22	4.304	0.199
Nov-22	4.4	0.190
Dec-22	4.569	0.178
Jan-23	4.675	0.177
Feb-23	4.535	0.158
Mar-23	4.146	0.126
Apr-23	3.378	0.055
May-23	3.312	0.053
Jun-23	3.357	0.054
Jul-23	3.41	0.055
Aug-23	3.427	0.056
Sep-23	3.419	0.057
Oct-23	3.453	0.056
Nov-23	3.577	0.055
Dec-23	3.806	0.055
Jan-24	3.931	0.058
Feb-24	3.831	0.058
1 YR STRIP	4.3448	0.203
2021	4.2448	0.216

IN THE NEWS

Fixed price transactions see hefty premiums in LNG spot market

Spot LNG buyers are paying hefty premiums when requesting for fixed price offers in their transactions in view of the recent volatility in LNG and gas markets, market sources said. Several buy tenders that were concluded lately, including those of PTT, Japex, and Komipo, were reportedly awarded with considerable premiums due to their requirement of fixed price basis offers in the tender process. Sources said that sellers would typically attach such premiums to their fixed price offers to buffer for slippage – the risk of market prices moving higher or lower than expected when the trade is executed, from when the offer or bid is submitted. A Guangdong-based buyer also observed that fixed price basis offers in the bilateral market were few to none, "so we are hesitating to buy on fixed price basis and considering bu... For more info go to <https://bit.ly/3GSU2c0>

Europe relies primarily on imports to meet its natural gas needs

Imports of natural gas by both pipeline and as liquefied natural gas (LNG) provided more than 80% of the supply of natural gas to the countries of the European Union (EU-27) and the United Kingdom (UK) in 2020, up from 65% a decade earlier. During 2020, natural gas imported into the region by pipeline made up 74% of all natural gas imports, and LNG accounted for the remaining 26% of total imports. Pipeline imports of natural gas into the region come from Russia, Norway, North Africa, and Azerbaijan. Pipeline imports originating in Russia—the largest supplier in the region—grew from about 1.1 billion cubic feet per day (Bcf/d) in 2010 to more than 13 Bcf/d in 2020 (a low consumption year due to COVID-19 related impacts). Despite construction of new pipelines, imports from Norway averaged aro... For more info go to <https://bit.ly/3gDVXY4>

LNG Supply and Demand Creates Continued Volatility

As European gas prices continue to make headlines across the world, SSSY LNG analyst Thanos Felios looks at what's behind the rise of LNG prices and the impact this has on the LNG Shipping market. With Europe relying on Russia for around 35% of its natural gas, the increasing geopolitical tensions between Russia and the West have continued to disrupt supplies, which have been lower than usual in recent months. Any further sanctions on Russia from the US are likely to further impact supplies. European gas storage supplies are low. The gas storages are mainly used as buffers during events of high demand and tight supply, but storage levels are low due to two main factors: 1. The delayed and prolonged cold winter of Q1-2021. 2. The struggle to rebuild gas stocks during the summer period of 2021 due to the incredible h... For more info go to <https://bit.ly/3uMeFF8>

**Prompt Natural Gas (NG)
Daily Sentiment**

BEARISH



RESISTANCE
4.269 & 4.344
SUPPORT
4.08 & 3.96

NATURAL GAS

Futures	Close
NG	\$4.195
Volume	87,595
Open Int.	63,679

Contact Us



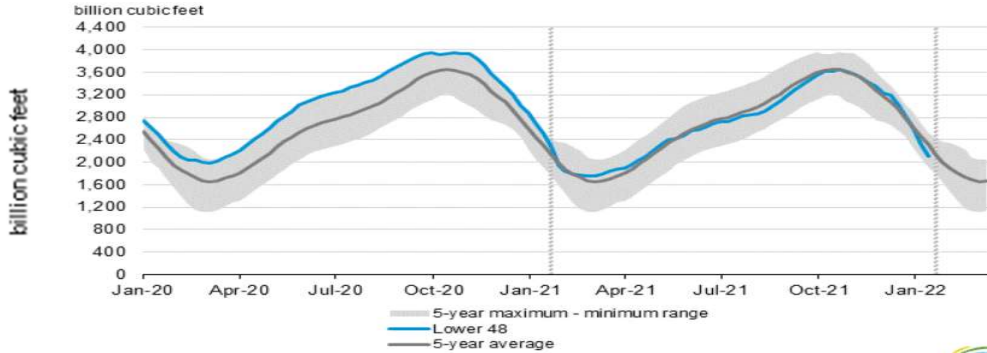
Mansfield Energy Corp
1025 Airport Pkwy
Gainesville, GA 30501
www.mansfield.energy

info@mansfieldoil.com
Phone: (800) 695 - 6626

NATURAL GAS NEWS

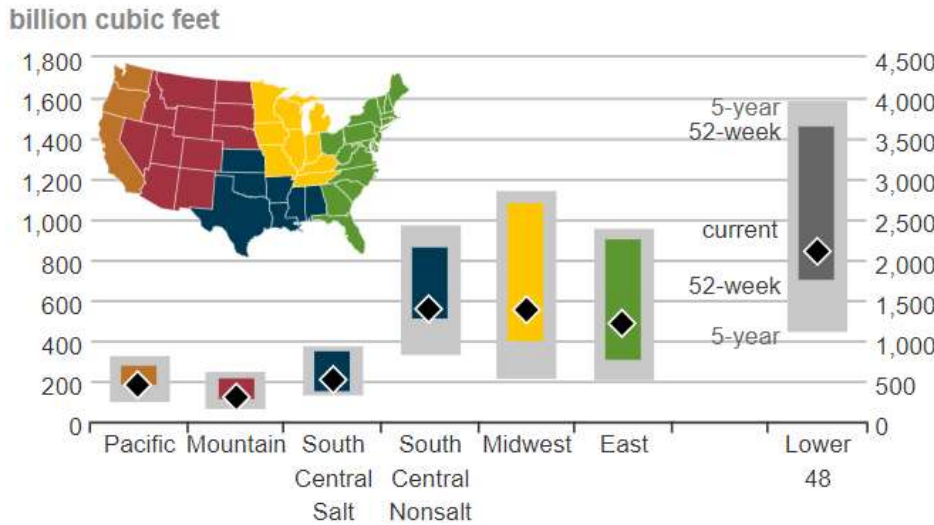


WEEKLY GAS IN UNDERGROUND STORAGE WITH 5-YR RANGE



for week ending February 04, 2022 | Released: February 10, 2022 | Next Release: February 17, 2022

UNDERGROUND WORKING NAT GAS STORAGE AS OF 01/28/2022



REGIONAL AVG TEMPERATURES AND DEPARTURE FROM NORMAL

	Jan 28	Jan 29	Jan 30	Jan 31	Feb 01	Feb 02	Feb 03	Feb 04	Feb 05	Feb 06	Feb 07	Feb 08	Feb 09	Feb 10
East	30	25	24	28	33	38	45	45	31	30	34	38	40	44
Midwest	18	16	21	26	34	25	18	15	15	23	23	29	35	30
South Central	43	43	47	51	54	50	36	30	35	40	43	47	50	51
Mountain	31	36	37	37	31	24	20	25	32	34	37	40	41	43
Pacific	48	49	49	46	45	43	45	47	49	52	53	54	57	60
Lower 48	33	31	32	35	38	37	36	35	31	34	37	40	43	45

°F below normal: <= -20, -19 to -15, -14 to -10, -9 to -5, -4 to -1
 normal: 0
 °F above normal: 1 to 4, 5 to 9, 10 to 14, 15 to 19, >= 20

EIA Weekly Storage Actual and Surveys for February 4, 2022

Released February 10, 2022

Range	-221 to -235
S&P Platts	-221
NGI	-189
Investing.com	-222

Total Working Gas In Storage

-2101 BCF

- 222 BCF (LAST WEEK)
- 7 BCF (LAST YEAR)
- 441 BCF (5-YEAR AVG)

U.S. Natural Gas Supply Gas Week 02/03 - 02/09

Average Daily Values (BCF/D):

<u>Last Year (BCF/d)</u>	
Dry Production -	91.3
Total Supply -	97.7
<u>Last Week (BCF/d)</u>	
Dry Production -	93.8
Total Supply -	100.8

[Next Report: February 17]

U.S. Natural Gas Supply Gas Week -

Average Daily Values (BCF/D):

<u>Last Year (BCF/d)</u>	
Dry Production -	27.1
Total Supply -	123.1
<u>Last Week (BCF/d)</u>	
Dry Production -	29.6
Total Supply -	130.5

[Next Report: February 17]

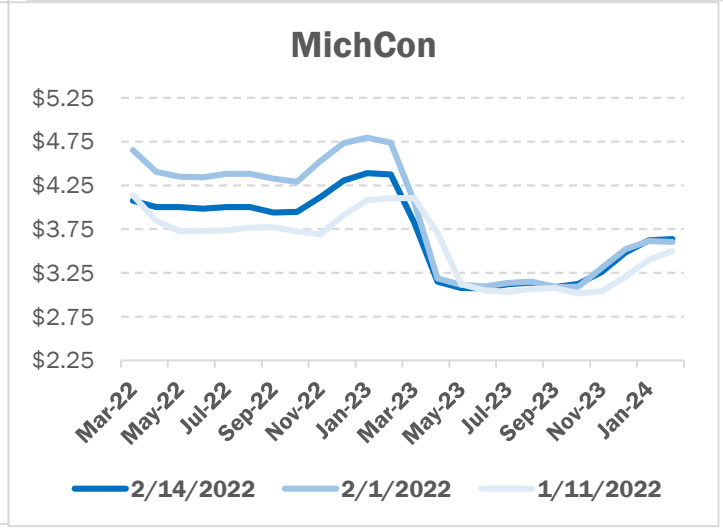
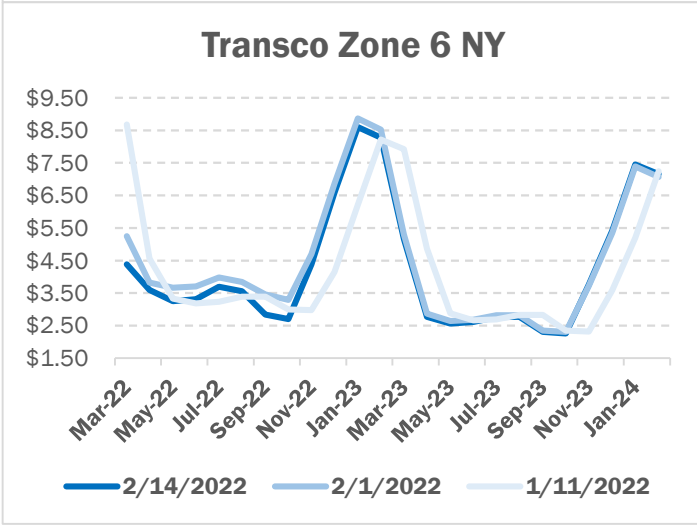
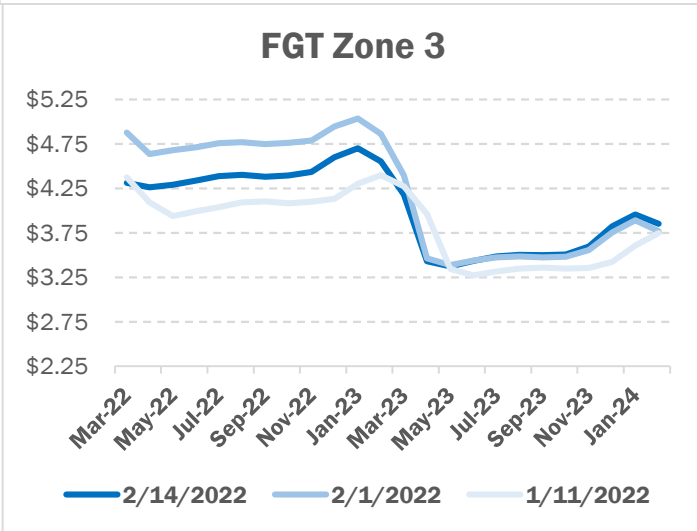
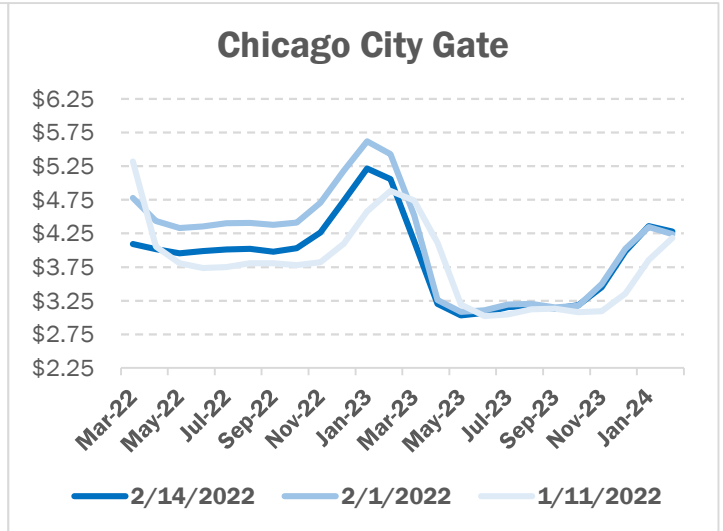
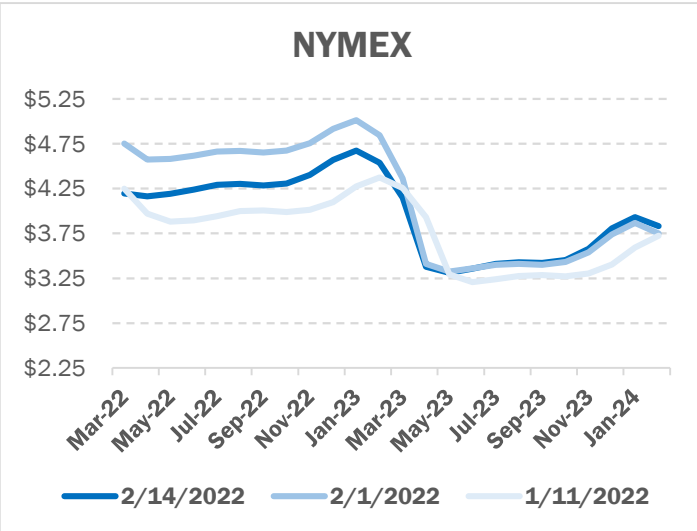
[For week ending February 17]

-195

NATURAL GAS NEWS



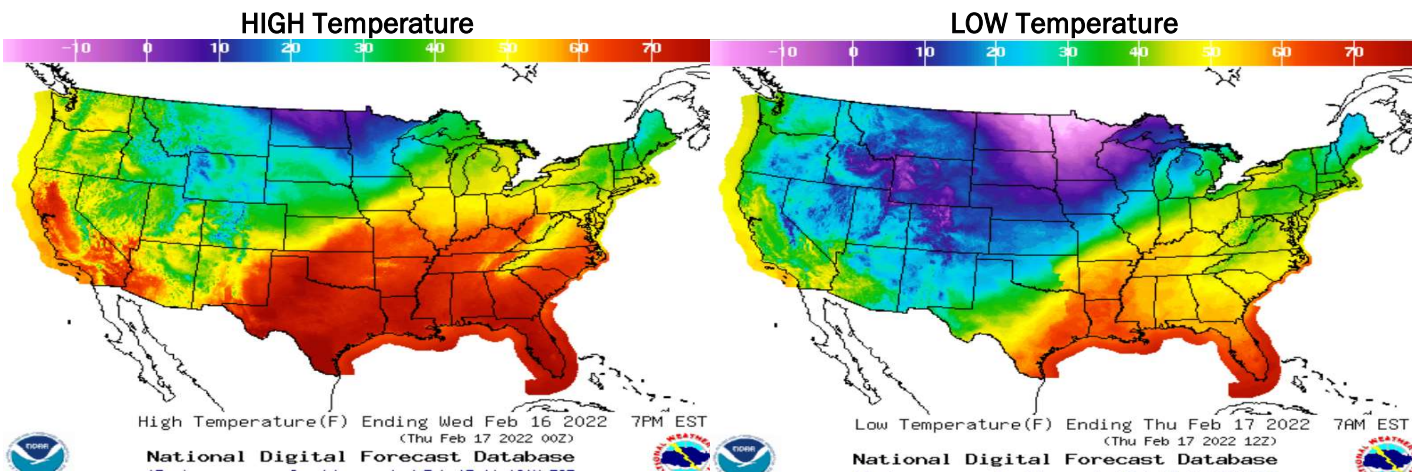
NATURAL GAS BASIS FUTURES



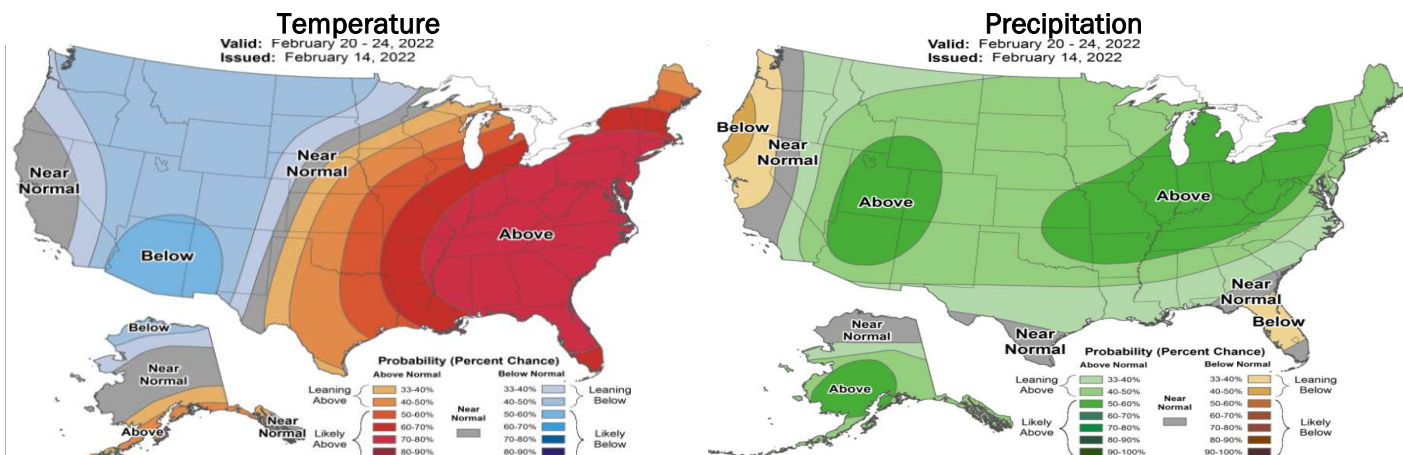
NATURAL GAS NEWS



WEATHER - HIGH / LOW TEMPERATURE - TOMORROW



WEATHER - 6 - 10 DAY OUTLOOK - NOAA



WEATHER - 8 - 14 DAY OUTLOOK - NOAA

