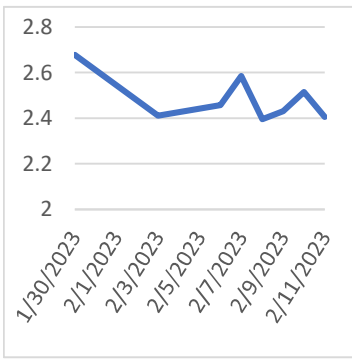


NATURAL GAS



Tuesday, February 14, 2023

Last Week's Prompt NYMEX



NYMEX NG Futures

Month	Close	Change
Mar-23	2.405	(0.109)
Apr-23	2.499	(0.108)
May-23	2.685	(0.093)
Jun-23	2.883	(0.083)
Jul-23	3.052	(0.071)
Aug-23	3.095	(0.066)
Sep-23	3.06	(0.062)
Oct-23	3.134	(0.063)
Nov-23	3.531	(0.069)
Dec-23	3.898	(0.075)
Jan-24	4.139	(0.067)
Feb-24	4.011	(0.067)
Mar-24	3.631	(0.040)
Apr-24	3.244	(0.015)
May-24	3.216	(0.012)
Jun-24	3.318	(0.004)
Jul-24	3.416	0.002
Aug-24	3.451	0.012
Sep-24	3.41	0.015
Oct-24	3.484	0.013
Nov-24	3.826	(0.007)
Dec-24	4.249	(0.017)
Jan-25	4.514	(0.026)
Feb-25	4.349	(0.032)
1 YR STRIP 2023	3.1993	(0.078)
	3.3015	(0.072)

IN THE NEWS

U.S. natgas gains 2% on rising LNG exports ahead of storage report

U.S. natural gas futures gained about 2% on Thursday after dropping to a 25-month low in the prior session on rising LNG exports and forecasts for slightly colder weather over the next two weeks than previously expected. That small price increase came ahead of a federal report expected to show last week's storage withdrawal was bigger than usual for the first time this year as cold weather boosted demand for gas to heat homes and businesses. Analysts forecast U.S. utilities pulled 195 bcf (billion cubic feet) of gas from storage during the week ended Feb. 3. That compares with a decrease of 228 bcf in the same week last year and a five-year (2018-2022) average decline of 171 bcf. EIA/GASNGAS/POLL... For more info go to <https://bit.ly/3YwyXyg>

Nat-Gas Rallies On Partial Reopening Of Freeport Export Terminal

Mar nat-gas Friday closed sharply higher after Freeport LNG said it received federal permission to resume nat-gas exports from its recently repaired terminal and that it will resume some shipments on Saturday. The Freeport LNG export terminal has been closed since an explosion on June 8 and has been a bearish factor for nat-gas prices since the reduction in LNG exports has boosted U.S. nat-gas inventories. Lower-48 state dry gas production on Friday was 99.9 bcf (+4.6% y/y), moderately below the record high of 103.6 bcf posted on Oct 3, according to BNEF. Lower-48 state gas demand Friday was 87.2 bcf/day, unchanged y/y, according to BNEF. On Friday, LNG net flows to U.S. LNG export terminals were 12.8 bcf/day, up +5.5% w/w. Nat-gas prices fell sharply over the past two months to a 2-ye... For more info go to <https://bit.ly/3HX77UR>

UPDATE 1-U.S. natgas Jumps 4% as vessel arrives at Idled Texas

U.S. natural gas futures climbed about 4% on Friday after the first vessel arrived at Freeport LNG's liquefied natural gas (LNG) export plant in Texas since the facility shut in a fire in June 2022. After federal regulators approved the cooldown of parts of Freeport and the return of ship loading at the plant in recent weeks, the arrival of the Kmarin Diamond LNG tanker was another sign that Freeport, the second biggest U.S. LNG export plant, would likely start pulling in lots of gas to make LNG for export in coming weeks. In addition to Freeport, gas prices also increased on rising LNG exports from other U.S. facilities and revised forecasts for colder weather and higher heating demand in late February. Meteorologists forecast the weather would remain mostly warmer than normal through Feb. 22 before turning colde... For more info go to <https://yhoo.it/3xnny8g>

Prompt Natural Gas (NG)

Daily Sentiment

BEARISH



RESISTANCE
2.551 & 2.698
SUPPORT
2.317 & 2.23

NATURAL GAS

Futures	Close
NG	\$2.405
Volume	63,101
Open Int.	120,962

Contact Us



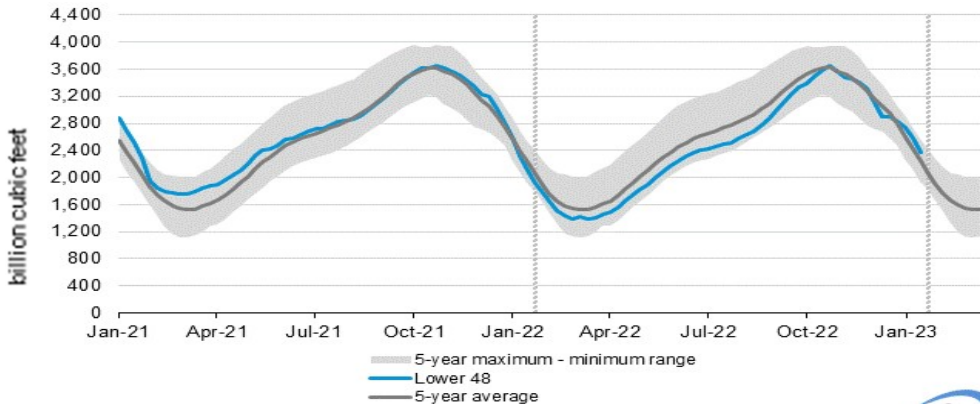
Mansfield Energy Corp
1025 Airport Pkwy
Gainesville, GA 30501
www.mansfield.energy

info@mansfieldoil.com
Phone: (800) 695 - 6626

NATURAL GAS NEWS



WEEKLY GAS IN UNDERGROUND STORAGE WITH 5-YR RANGE



for week ending February 03, 2023 | Released: February 09, 2023 | Next Release: February 16, 2023

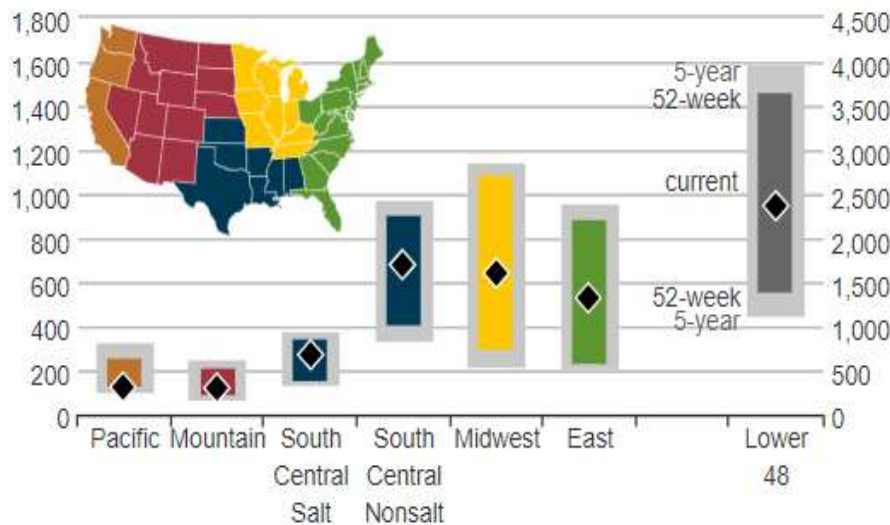
EIA Weekly Storage Actual and Surveys for

February 3, 2023

Released February 09, 2023

Range	-197 to -217
S&P Global	-197
FX Street	-114
Investing.com	-195

UNDERGROUND WORKING NAT GAS STORAGE AS OF 01/13/2023



Total Working Gas In Storage

2366 BCF

- 217 BCF (LAST WEEK)
- 233 BCF (LAST YEAR)
- 117 BCF (5-YEAR AVG)

U.S. Natural Gas Supply

Gas Week -

Average Daily Values (BCF/D):

Last Year (BCF/d)

Dry Production -	90.8
Total Supply -	98.8

Last Week (BCF/d)

Dry Production -	98.8
Total Supply -	104.7

[Next Report: February 09]

U.S. Natural Gas Demand

Gas Week -

Average Daily Values (BCF/D):

Last Year (BCF/d)

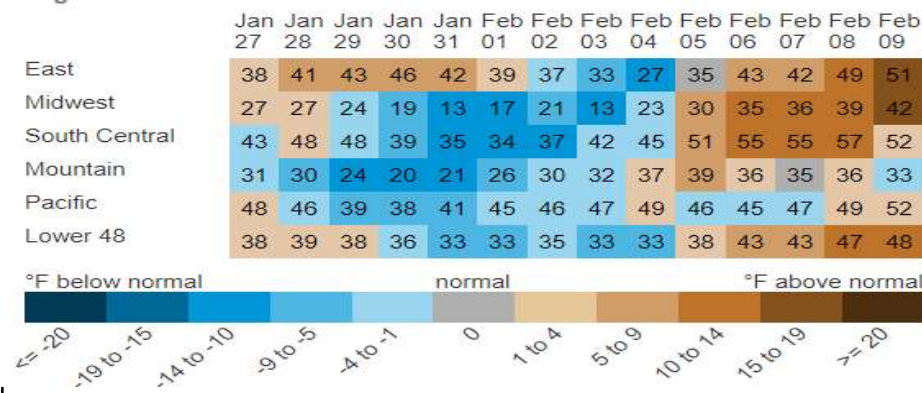
Power -	31.5
Total Demand -	136.8

Last Week (BCF/d)

Power -	32.9
Total Demand -	125.6

[Next Report: February 09]

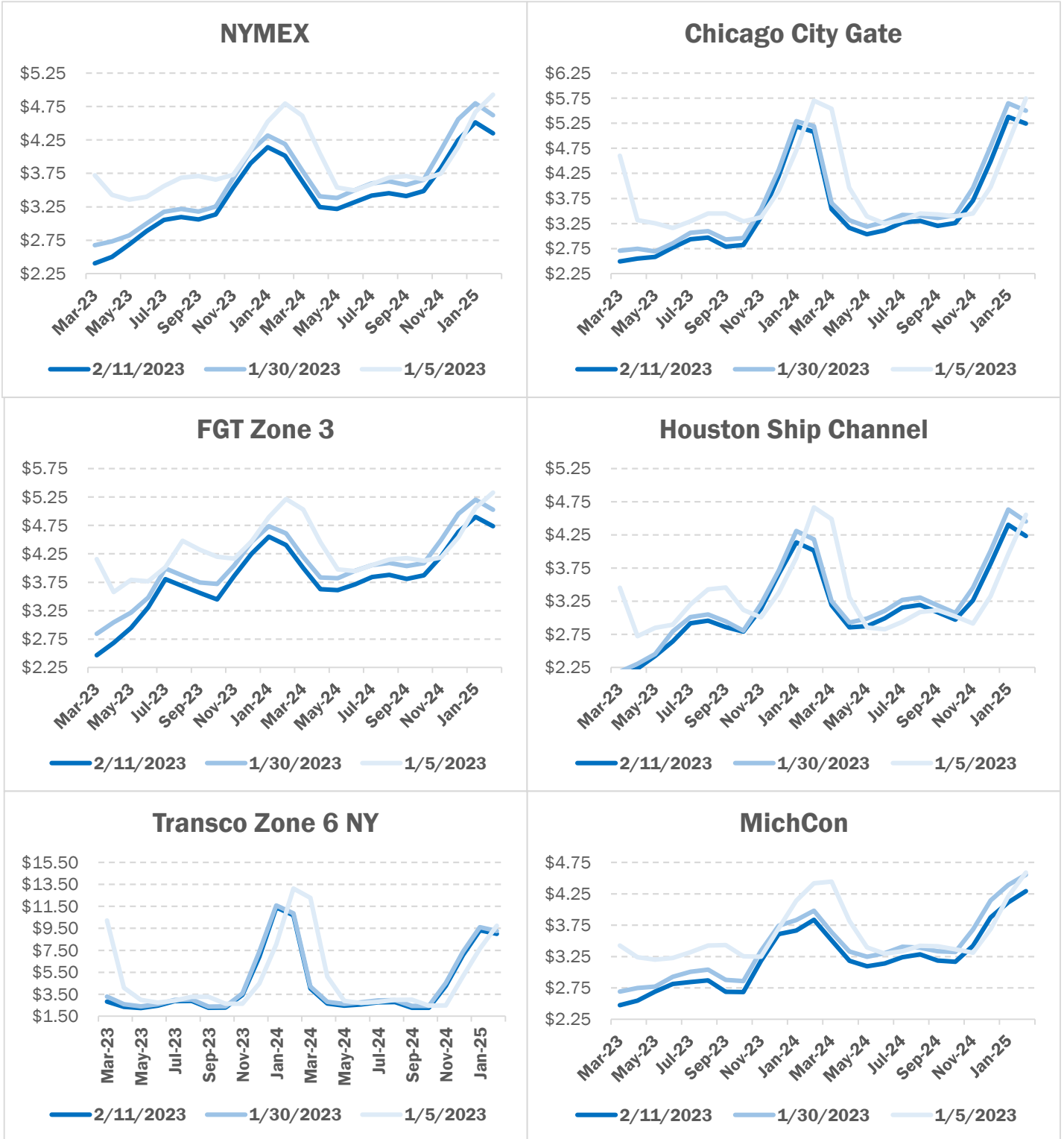
REGIONAL AVG TEMPERATURES AND DEPARTURE FROM NORMAL



NATURAL GAS NEWS

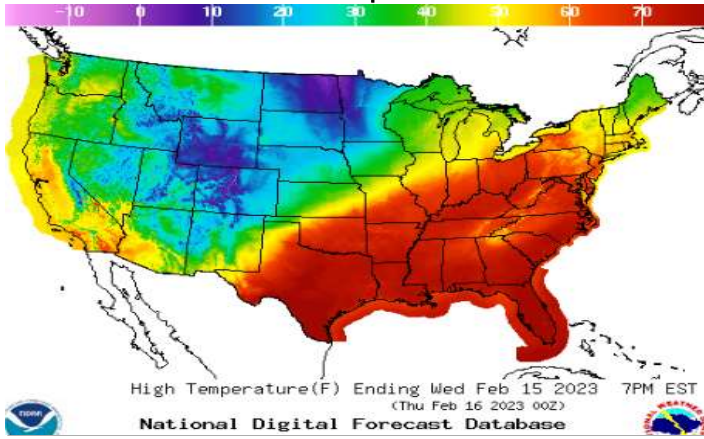


NATURAL GAS BASIS FUTURES

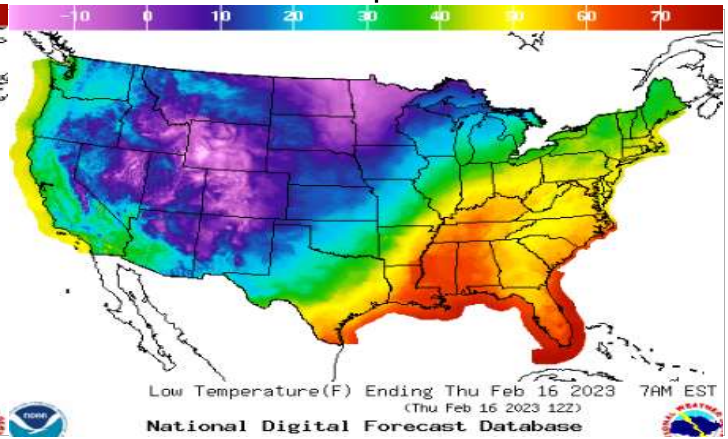


WEATHER - HIGH / LOW TEMPERATURE - TOMORROW

HIGH Temperature



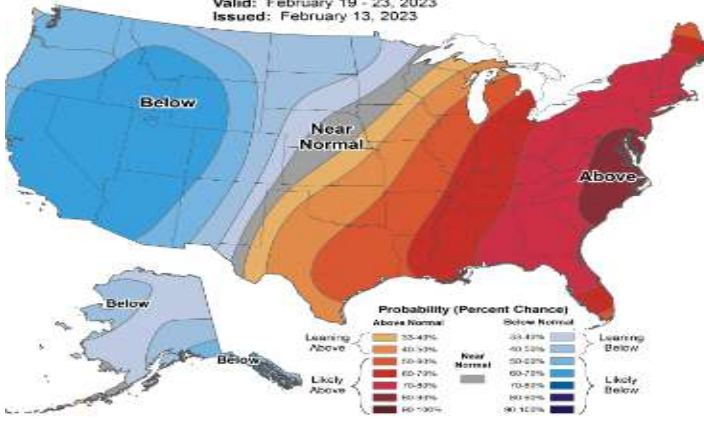
LOW Temperature



WEATHER - 6 - 10 DAY OUTLOOK - NOAA

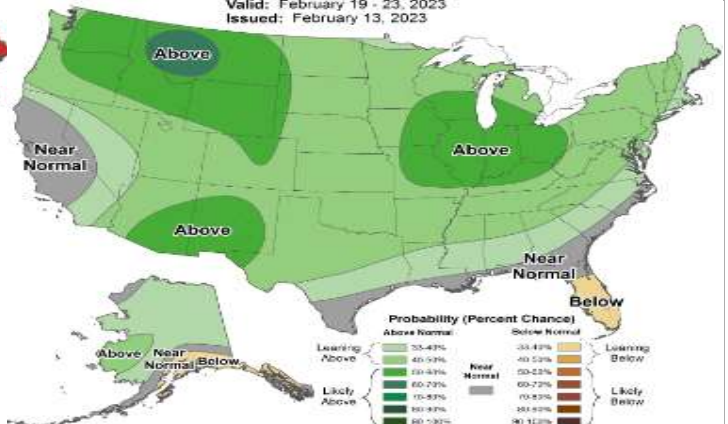
Temperature

Valid: February 19 - 23, 2023
Issued: February 13, 2023



Precipitation

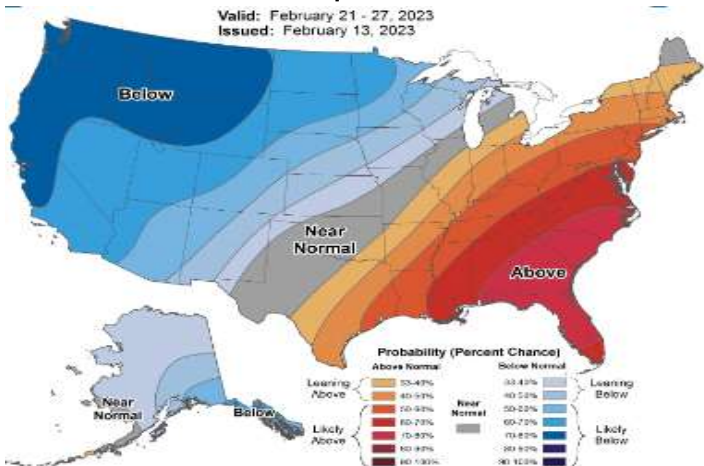
Valid: February 19 - 23, 2023
Issued: February 13, 2023



WEATHER - 8 - 14 DAY OUTLOOK - NOAA

Temperature

Valid: February 21 - 27, 2023
Issued: February 13, 2023



Precipitation

Valid: February 21 - 27, 2023
Issued: February 13, 2023

