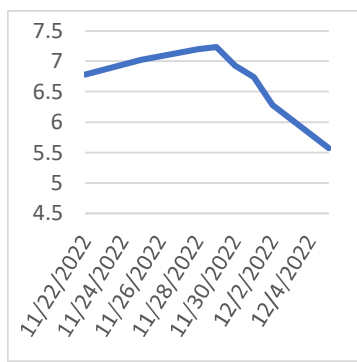


Tuesday, December 6, 2022

### Last Week's Prompt NYMEX



### NYMEX NG Futures

Month	Close	Change
Jan-23	5.577	(0.704)
Feb-23	5.484	(0.685)
Mar-23	5.024	(0.558)
Apr-23	4.62	(0.315)
May-23	4.602	(0.304)
Jun-23	4.694	(0.297)
Jul-23	4.788	(0.292)
Aug-23	4.794	(0.292)
Sep-23	4.736	(0.292)
Oct-23	4.794	(0.288)
Nov-23	5.084	(0.255)
Dec-23	5.473	(0.228)
Jan-24	5.729	(0.197)
Feb-24	5.511	(0.158)
Mar-24	4.905	(0.123)
Apr-24	4.202	(0.075)
May-24	4.143	(0.060)
Jun-24	4.209	(0.054)
Jul-24	4.281	(0.048)
Aug-24	4.301	(0.048)
Sep-24	4.254	(0.047)
Oct-24	4.343	(0.044)
Nov-24	4.614	(0.048)
Dec-24	5.03	(0.059)
1 YR STRIP	4.9725	(0.376)
2023	4.9852	(0.334)

### IN THE NEWS

#### How Europe's energy crisis changes the LNG market

Massive supply disruption in Europe and soaring global prices. No other commodity has faced the extreme challenges of global gas since Russia's invasion of Ukraine. I caught up with Kateryna Filippenko, Director, Global Gas Research, to find out her team's latest views on the market. How does this winter in Europe look? Better than we could have hoped for a few months ago in some respects, but it's been at a severe cost. Extremely high prices throughout the year have stretched affordability for consumers and weakened the economy. High prices have hit demand hard (down 22% for non-power sectors year-on-year July to October) and pulled in LNG supplies destined for Asia. This rebalancing, combined with warm weather in recent weeks, has kept storage 93% full – well up on the 80% 'normal' for early December. Cold weath... For more info go to <https://bit.ly/3EYHTnG>

#### U.S. LNG is Booming, But Who Supplies The Gas?

This year, the United States became the world's biggest liquefied natural gas (LNG) exporter as deliveries to energy-starved buyers in Europe and Asia surged. In the current year, five developers have signed over 20 long-term deals to supply more than 30 million metric tons/year of LNG to energy-starved buyers in Europe and Asia. As energy analysts RBN Energy notes, the first wave of LNG export expansion has mostly gone smoothly thanks to fast-rising natural gas supplies in the Lower 48 and a slew of pipeline reversals and expansions that allowed low-cost Marcellus-Utica gas supplies to reach Gulf Coast markets. But with LNG demand already high and set to grow at a frenetic pace, the big question becomes how quickly can the United States ramp up production to meet future demand? There's be... For more info go to <https://bit.ly/3Bd23cq>

#### U.S. LNG exports remain flat as domestic market braces

U.S. liquefied natural gas exports were flat last month, Refinitiv shipping data showed on Thursday, as production remained limited and the arrival of winter weather in the Northern Hemisphere led utilities to build inventories for domestic use. U.S. natural gas futures' implied volatility, a measure of the likely movement in prices, hit a record last week on the outlook for colder weather and doubts about the restart of the Freeport LNG plant in Texas this month. The plant has been idled since a June explosion. Freeport LNG, which provides around 20% of U.S. LNG processing, has said it aims to resume gas processing in mid-December depending on regulatory approvals. Analysts have said it could be early 2023 before shipments resume. In November, U.S. producers shipped a total of 88 cargoes carrying 6.31 million tonn... For more info go to <https://reut.rs/3Y2noir>

### Prompt Natural Gas (NG) Daily Sentiment

BEARISH



RESISTANCE  
5.901 & 6.224  
SUPPORT  
5.405 & 5.232

### NATURAL GAS

Futures	Close
NG	\$5.577
Volume	56,799
Open Int.	159,665

### Contact Us



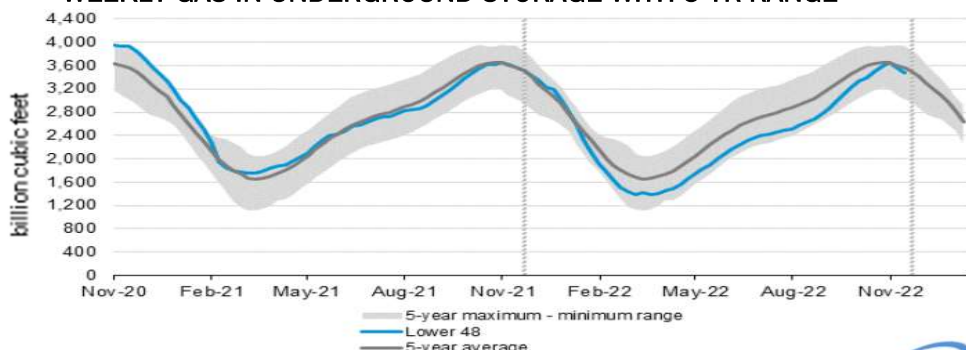
**Mansfield Energy Corp**  
1025 Airport Pkwy  
Gainesville, GA 30501  
[www.mansfield.energy](http://www.mansfield.energy)

info@mansfieldoil.com  
Phone: (800) 695 - 6626

# NATURAL GAS NEWS



## WEEKLY GAS IN UNDERGROUND STORAGE WITH 5-YR RANGE



for week ending November 25, 2022 | Released: December 01, 2022 | Next Release: December 08, 2022

### EIA Weekly Storage Actual and Surveys for

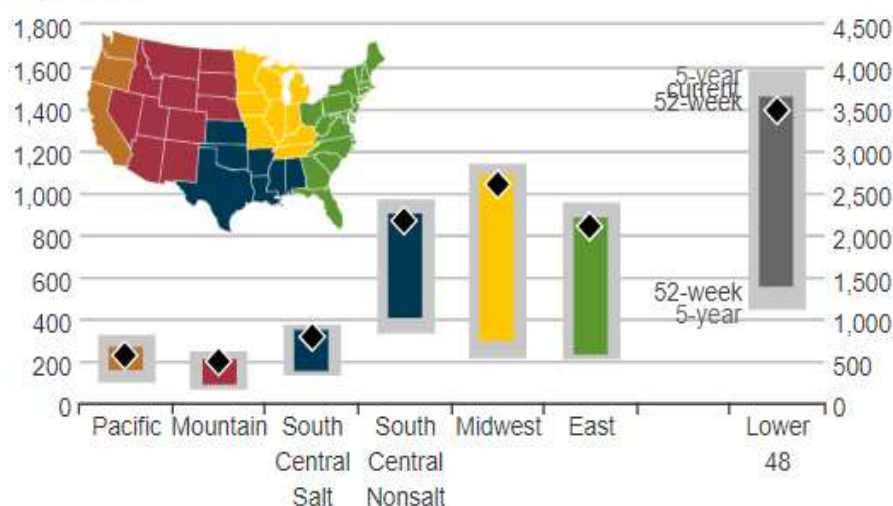
November 25, 2022

Released December 01, 2022

Range	-81 to -93
S&P Global	-81
FX Street	-153
Investing.com	-84

## UNDERGROUND WORKING NAT GAS STORAGE AS OF 11/17/2022

billion cubic feet



### Total Working Gas In Storage

**3483 BCF**

- 81 BCF (LAST WEEK)
- 89 BCF (LAST YEAR)
- 86 BCF (5-YEAR AVG)

### U.S. Natural Gas Supply

#### Gas Week -

Average Daily Values (BCF/D):

Last Year (BCF/d)

Dry Production -	97.9
Total Supply -	103.4

Last Week (BCF/d)

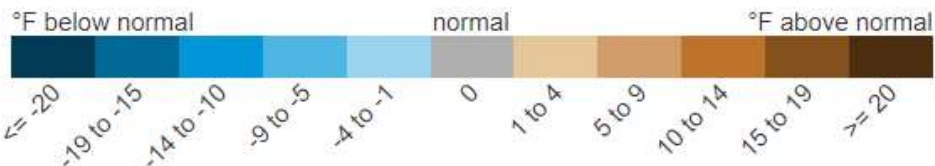
Dry Production -	100.7
Total Supply -	107.0

[Next Report: December 06]

## REGIONAL AVG TEMPERATURES AND DEPARTURE FROM NORMAL

degrees Fahrenheit

	Nov 18	Nov 19	Nov 20	Nov 21	Nov 22	Nov 23	Nov 24	Nov 25	Nov 26	Nov 27	Nov 28	Nov 29	Nov 30	Dec 01
East	39	38	36	38	42	47	47	48	50	51	50	47	53	42
Midwest	26	24	25	30	36	40	40	42	42	39	39	42	32	29
South Central	41	39	41	42	48	52	54	53	53	54	54	57	50	47
Mountain	29	30	34	36	38	39	36	39	39	37	37	31	32	39
Pacific	48	47	49	50	51	51	53	53	51	50	46	44	45	43
Lower 48	37	36	36	39	43	46	47	48	48	48	47	46	45	40



### U.S. Natural Gas Demand

#### Gas Week -

Average Daily Values (BCF/D):

Last Year (BCF/d)

Power -	285
Total Demand -	110.9

Last Week (BCF/d)

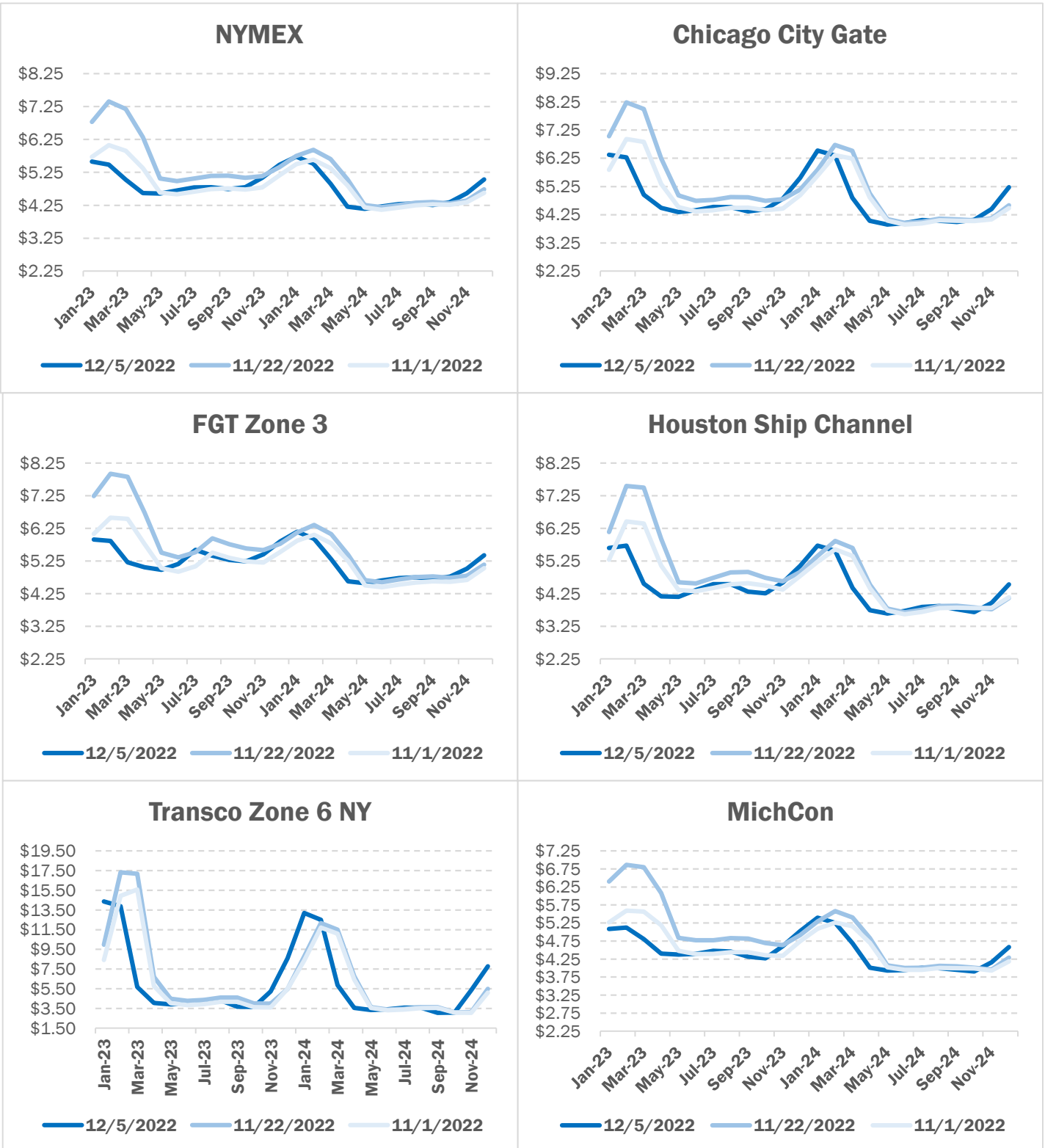
Power -	32.9
Total Demand -	125.9

[Next Report: December 06]

# NATURAL GAS NEWS



## NATURAL GAS BASIS FUTURES

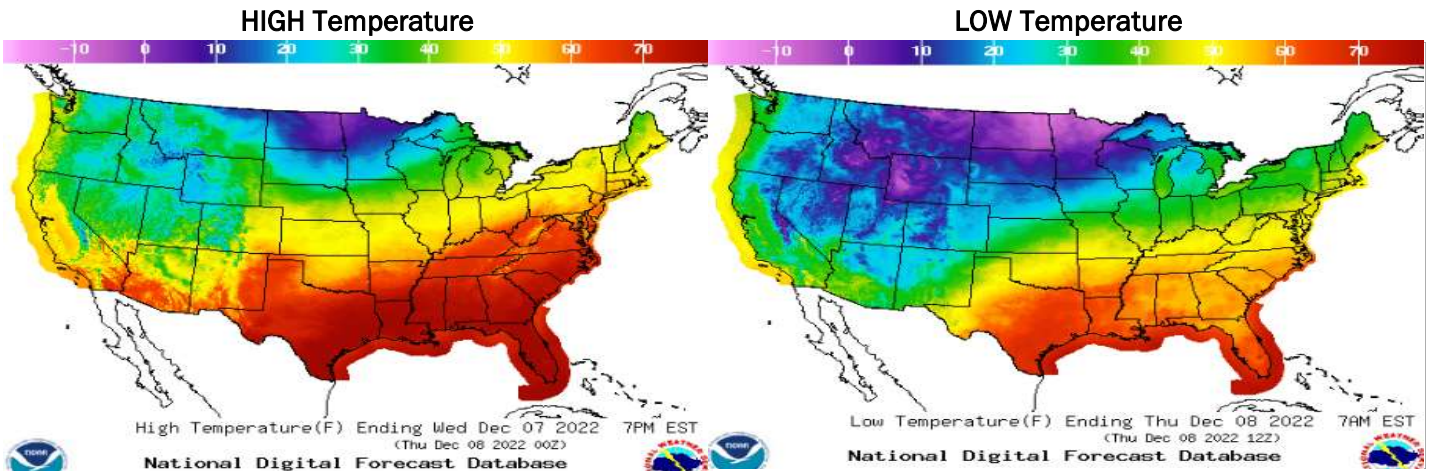




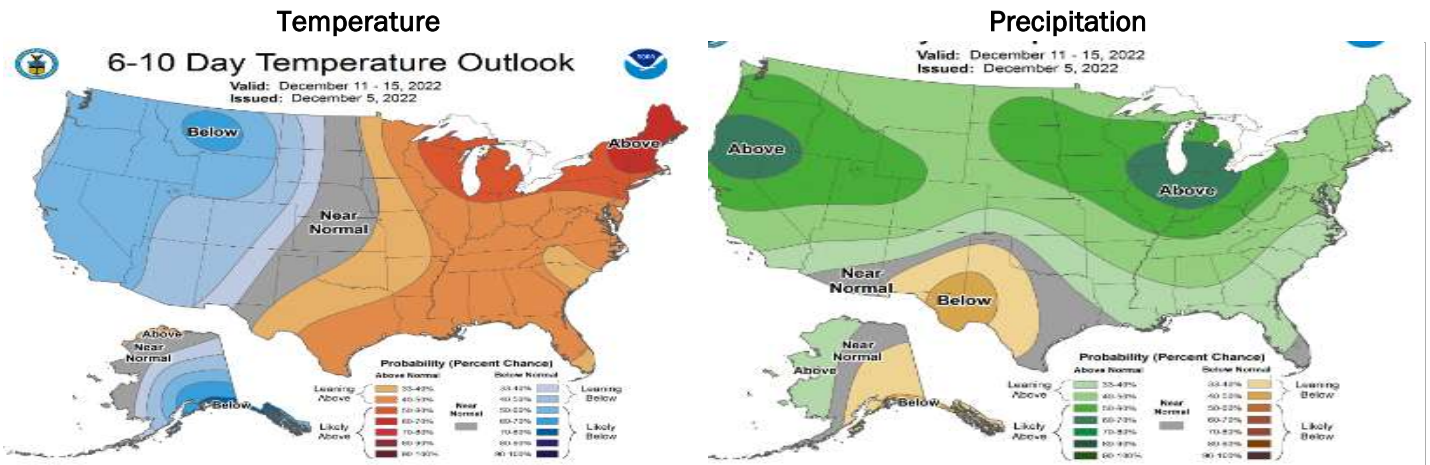
# NATURAL GAS NEWS



## WEATHER - HIGH / LOW TEMPERATURE - TOMORROW



## WEATHER - 6 - 10 DAY OUTLOOK - NOAA



## WEATHER - 8 - 14 DAY OUTLOOK - NOAA

