

# NATURAL GAS



NEWS

Thursday, April 28, 2022

**Last Week's Prompt  
NYMEX**



**NYMEX NG Futures**

Month	Close	Change
Jun-22	7.339	0.361
Jul-22	7.436	0.368
Aug-22	7.435	0.367
Sep-22	7.385	0.361
Oct-22	7.387	0.358
Nov-22	7.456	0.353
Dec-22	7.589	0.344
Jan-23	7.692	0.342
Feb-23	7.405	0.331
Mar-23	6.165	0.179
Apr-23	4.47	0.103
May-23	4.303	0.083
Jun-23	4.341	0.083
Jul-23	4.384	0.083
Aug-23	4.387	0.080
Sep-23	4.366	0.079
Oct-23	4.402	0.076
Nov-23	4.548	0.074
Dec-23	4.819	0.070
Jan-24	4.956	0.071
Feb-24	4.783	0.066
Mar-24	4.406	0.056
Apr-24	3.726	0.034
May-24	3.645	0.027
1 YR STRIP	6.8385	0.296
2021	7.4649	0.357

**IN THE NEWS**

**Profits Skyrocket for US LNG Companies**

The United States is poised to become the world's leading liquefied natural gas (LNG) exporter by the year's end. The US Energy Information Administration forecasts the country will export a whopping 12.2 billion cubic feet per day (Bcf/d) average to surpass Australia and Qatar for the top spot. Demand is high as Europe tries to reduce gas imports from Russia following its invasion of Ukraine. Europe was the top destination for US LNG for the fourth straight month, receiving 65% of total exports. The EU's pledged to reduce its consumption of Russian natural gas by nearly two-thirds before the year's end. Before this, the main American export market was Asia—Japan, China, and Korea. American shale producers and LNG exporters are already trying to take advantage of this surge and secure long-term contacts and financ... For more info go to <https://bit.ly/3xXZhqQ>

**U.S. Natural Gas Market: Storage Surplus On The Horizon**

Last week (ending Nov. 26), the number of heating degree days (HDDs) increased by almost 20% w-o-w (from 119 to 143). The total "energy demand" (as measured in total degree days or TDDs) was 22.0% above last year's level but only 1% above the 30-year average. This week (ending Dec. 3), the weather conditions in the contiguous United States have been warming up. I estimate that the number of nationwide HDDs will drop by around 13% (from 143 to 124). The total average daily consumption of natural gas (in the contiguous United States) should be somewhere between 89 bcf/d and 91 bcf/d. The total "energy demand" (measured in TDDs) should drop by as much as 20% y-o-y, while the deviation from the norm will turn negative (-22.3%). Next week (ending Dec. 10), the weather conditions are expected to... For more info go to <https://bit.ly/3KmoY6Q>

**U.S. natgas Jumps 5% after Russia halts exports to...**

U.S. natural gas futures jumped about 5% to one-week high on Wednesday on expectations U.S. liquefied natural gas (LNG) will remain near record highs for months to come, after Moscow's toughest retaliation so far against international sanctions over its invasion of Ukraine. Russia halted gas supplies to Bulgaria and Poland for rejecting its demand for payment in roubles, causing gas prices in northwestern Europe to jump 5% on Tuesday and 9% on Wednesday. U.S. prices also gained support from forecasts for more gas demand in the United States over the next two weeks than previously expected, and a continued drop in U.S. output due to a late-season cold snap that froze oil and gas wells in North Dakota. In addition, energy traders said Wednesday's trade could be volatile with the upcoming expiration of the U.S. May f... For more info go to <https://bit.ly/3LqN1mr>

**Prompt Natural Gas (NG)  
Daily Sentiment**

**BULLISH**



RESISTANCE  
7.59 & 7.841  
SUPPORT  
7.022 & 6.705

**NATURAL GAS**

Futures	Close
NG	\$7.339
Volume	63,393
Open Int.	131,950

**Contact Us**



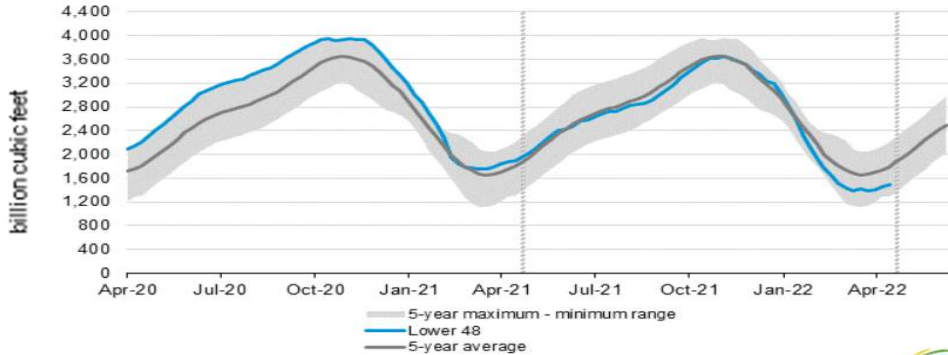
**Mansfield Energy Corp**  
1025 Airport Pkwy  
Gainesville, GA 30501  
[www.mansfield.energy](http://www.mansfield.energy)

info@mansfieldoil.com  
Phone: (800) 695 - 6626

# NATURAL GAS NEWS



## WEEKLY GAS IN UNDERGROUND STORAGE WITH 5-YR RANGE



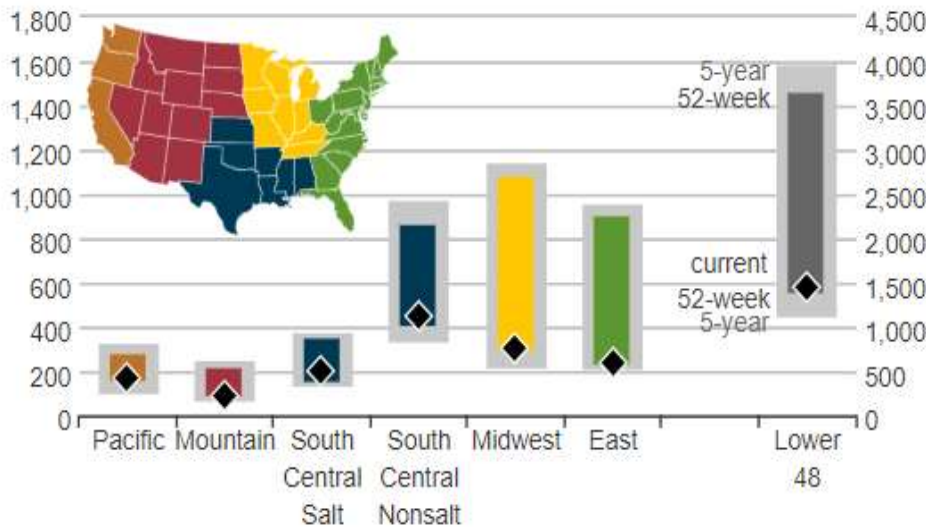
for week ending April 22, 2022 | Released: April 28, 2022 | Next Release: May 05, 2022

### EIA Weekly Storage Actual and Surveys for April 22, 2022

Released April 28, 2022

Range -42 to -50  
Investing.com -40

## UNDERGROUND WORKING NAT GAS STORAGE AS OF 04/15/2022



### Total Working Gas In Storage

**-1490 BCF**

40 BCF (LAST WEEK)  
-305 BCF (LAST YEAR)  
-406 BCF (5-YEAR AVG)

### U.S. Natural Gas Supply Gas Week 04/14 - 04/20

Average Daily Values (BCF/D):

Last Year (BCF/d)

Dry Production - 92.1

Total Supply - 96.8

Last Week (BCF/d)

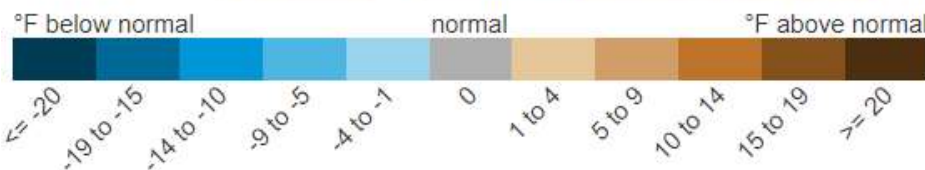
Dry Production - 94.8

Total Supply - 100.5

[Next Report: April 28]

## REGIONAL AVG TEMPERATURES AND DEPARTURE FROM NORMAL

	Apr 08	Apr 09	Apr 10	Apr 11	Apr 12	Apr 13	Apr 14	Apr 15	Apr 16	Apr 17	Apr 18	Apr 19	Apr 20	Apr 21
East	52	48	48	52	60	64	65	59	59	53	49	48	50	55
Midwest	39	40	48	51	54	57	45	45	43	39	39	40	46	57
South Central	55	58	65	69	73	71	63	66	68	67	63	60	69	74
Mountain	53	53	49	49	45	37	42	46	47	51	52	55	56	58
Pacific	64	58	53	49	46	46	48	51	50	54	55	54	52	51
Lower 48	52	50	51	54	57	58	56	55	55	52	50	50	53	58



### U.S. Natural Gas Demand Gas Week 04/14 - 04/20

Average Daily Values (BCF/D):

Last Year (BCF/d)

Dry Production - 25.1

Total Supply - 93.2

Last Week (BCF/d)

Dry Production - 26.3

Total Supply - 94.9

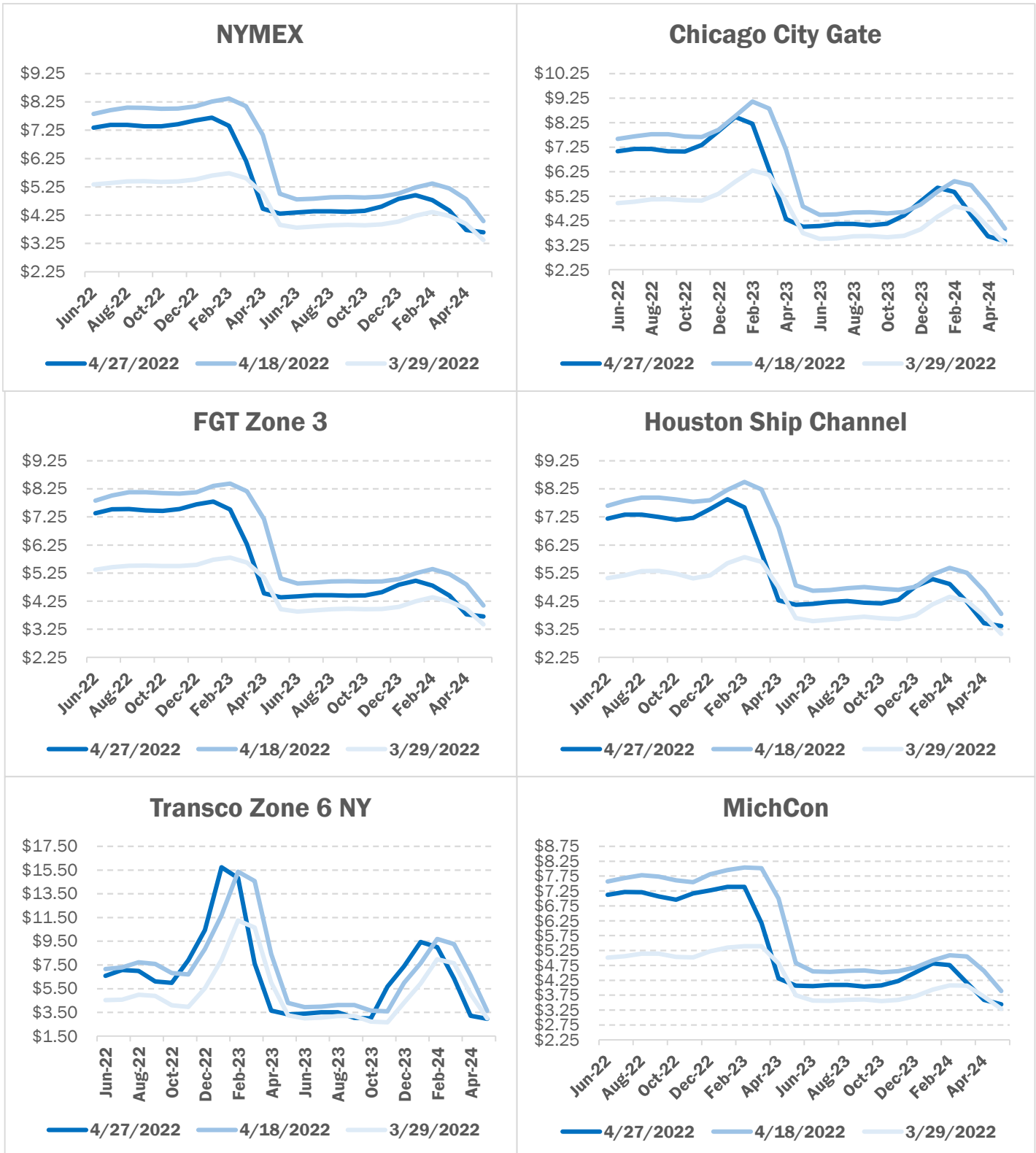
[Next Report: April 28]

[For week ending April 29]

# NATURAL GAS NEWS



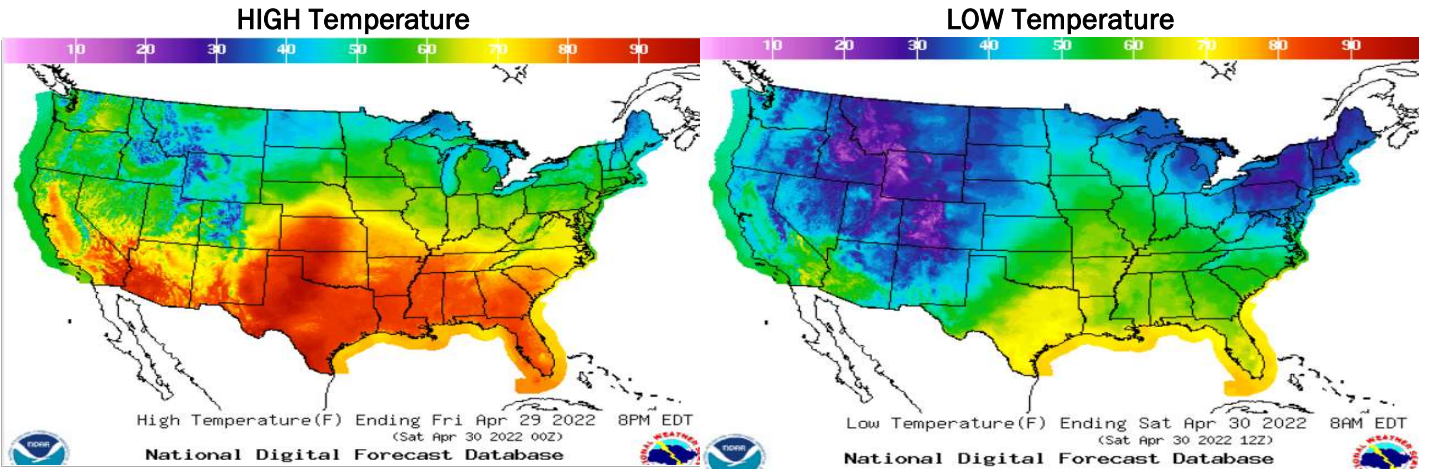
## NATURAL GAS BASIS FUTURES



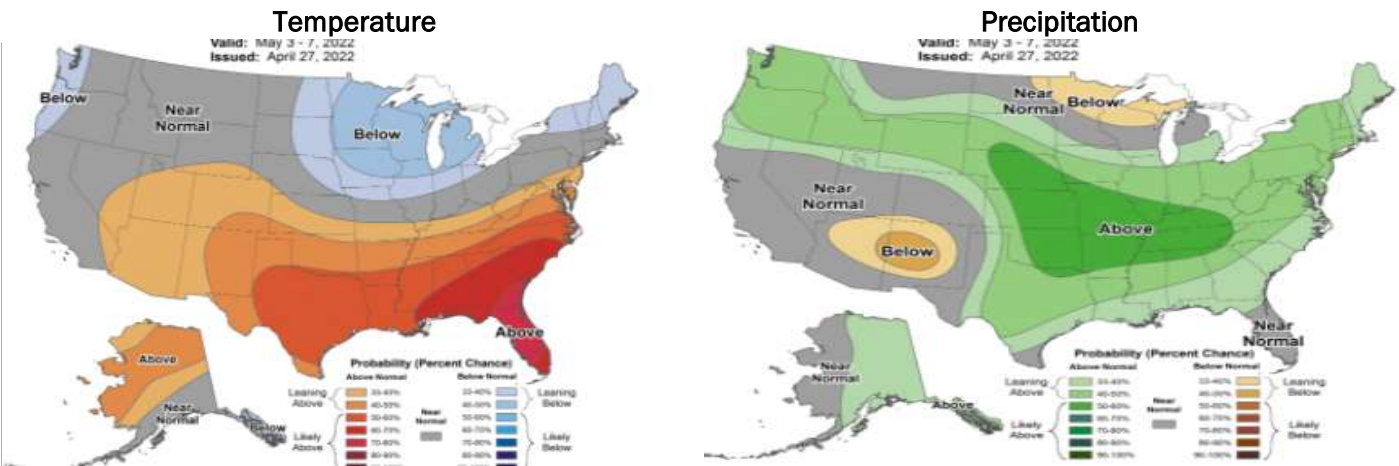
# NATURAL GAS NEWS



## WEATHER - HIGH / LOW TEMPERATURE - TOMORROW



## WEATHER - 6 - 10 DAY OUTLOOK - NOAA



## WEATHER - 8 - 14 DAY OUTLOOK - NOAA

