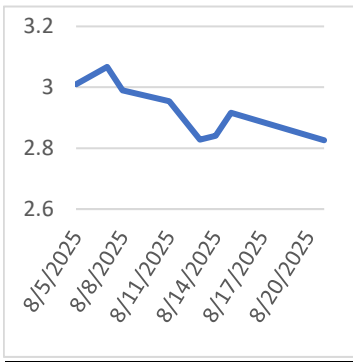


**Monday, August 25, 2025**

**Last Week's Prompt  
NYMEX**



**NYMEX NG Futures**

Month	Close	Change
Sep-24	2.826	-0.090
Oct-24	2.914	-0.105
Nov-24	3.247	-0.122
Dec-24	3.822	-0.097
Jan-25	4.154	-0.089
Feb-25	3.924	-0.073
Mar-25	3.542	-0.054
Apr-25	3.408	-0.033
May-25	3.437	-0.031
Jun-25	3.613	-0.013
Jul-25	3.813	0.002
Aug-25	3.875	0.009
Sep-25	3.837	0.009
Oct-25	3.883	0.004
Nov-25	4.097	-0.006
Dec-25	4.497	-0.001
Jan-26	4.749	0.020
Feb-26	4.379	0.043
Mar-26	3.803	0.059
Apr-26	3.418	0.055
May-26	3.394	0.059
Jun-26	3.542	0.065
Jul-26	3.720	0.066
Aug-26	3.780	0.067
1 YR STRIP 2025	3.548 3.202	-0.058 -0.077

**IN THE NEWS**

**Mansfield Market Assessment**

The market continues to grind lower on the heels of very bearish weather and lower LNG export volumes. The 1-15-day forecast is around 33 CDD below the 10-year normal. Weather does not get more bearish than what we are seeing. Models are not trying to bring back any heat after day 15 so this pattern looks locked in for a bit. End of season storage estimates range from 3.965 Tcf to 4.05 Tcf. Lower prices do cure low prices so I do not think we go much lower than 2.50 unless we see some extrinsic event such as a Freeport trip...

**Bearish Forecast Builds as Market Eyes Breakdown Below \$2.574**

U.S. natural gas futures closed the week down 7.48%, settling at \$2.698, after decisively breaking below long-held support levels. A persistent combination of mild weather, surging production, and elevated inventories continues to weigh heavily on price action. The move not only erased prior gains but also positions the market to test a key long-term support at \$2.574, a level not seen in nearly ten months. Forecast models from Atmospheric G2 show a clear cooling trend across major demand regions into early September. Temperatures are expected to dip into the mid-60s to low 80s across the Midwest, Northeast, and Ohio Valley—suppressing power sector demand just as late-summer cooling loads should be peaking... For more info go to <https://tinyurl.com/57wsy5dt>

**Natural Gas Futures Pressured by Cool Weather**

U.S. natural gas futures started the week under pressure, gapping lower on Monday and continuing the slide that took prices to fresh nine-month lows. With mild late-summer weather slashing power burns and production holding strong, the market's failure to hold \$2.748 now puts \$2.574 in the crosshairs—a level we haven't seen since last fall. Forecasts now call for an early taste of fall across the Midwest and East, with highs topping out in the low 80s and even dipping into the 60s in spots. Daily power burn has already dropped to 77.9 Bcf, and more softness is likely as we close out meteorological summer. More likely than not, we don't see any heat-driven demand pop until the back half of September—if at all.... For more info go to <https://tinyurl.com/5n6maby2>

**Prompt Natural Gas (NG) Daily  
Sentiment**

**BEARISH**



RESISTANCE  
\$ 2.879 & 2.958  
SUPPORT  
\$ 2.754 & 2.708

**NATURAL GAS**

Futures	Close
NG	\$2.826
Volume	14,887
Open Int.	33,301

**Contact Us**



*Always on it*

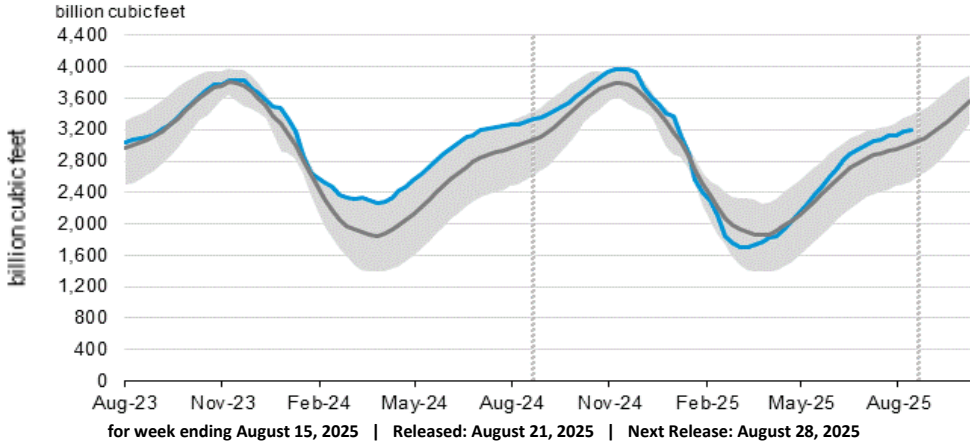
**Mansfield Power & Gas**  
1025 Airport Pkwy  
Gainesville, GA 30501  
[www.mansfield.energy](http://www.mansfield.energy)

customer@mansfieldpowergas.com  
Phone: (678) 207 - 3350

# NATURAL GAS NEWS



## WEEKLY GAS IN UNDERGROUND STORAGE WITH 5-YR RANGE



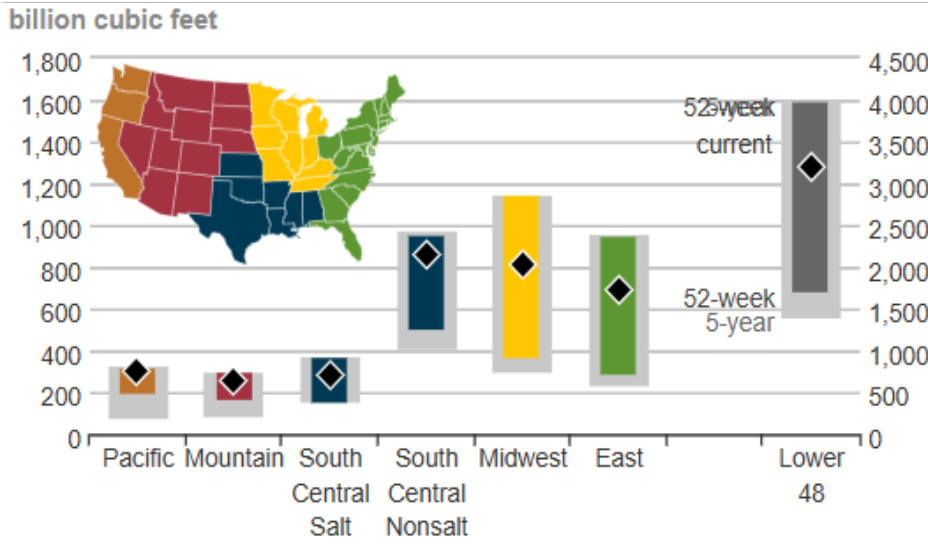
*EIA Weekly Storage Actual and Surveys for*

**August 15, 2025**

Released August 21, 2025

Range	11 to 30
S&P Global	21
FX Street	22
Investing.com	19

## UNDERGROUND WORKING NAT GAS STORAGE AS OF 08/15/2025



## Total Working Gas In Storage

**3199 BCF**

13 BCF (LAST WEEK)

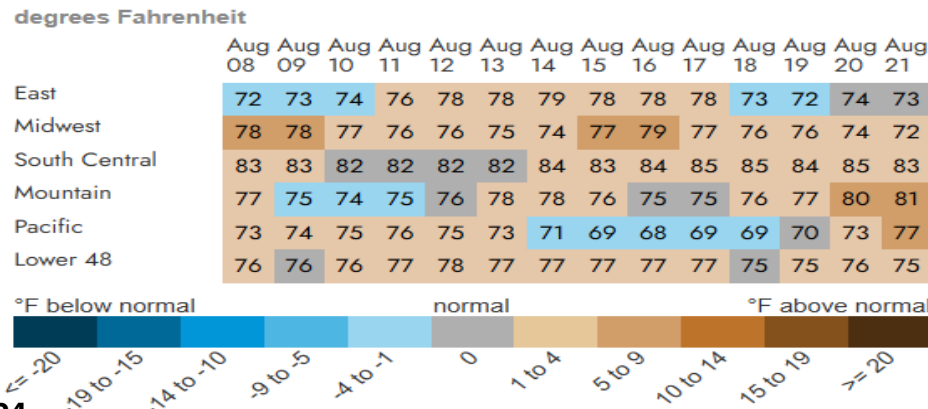
-95 BCF (LAST YEAR)

164 BCF (5-YEAR AVG)

## U.S. Natural Gas Supply

<b>Gas Week -</b>	
<b>Average Daily Values (BCF/D):</b>	
<u>Last Year (BCF/d)</u>	
Dry Production -	102.8
Total Supply -	108.0
<u>Last Week (BCF/d)</u>	
Dry Production -	106.7
Total Supply -	112.1
[Next Report: August 28]	

## REGIONAL AVG TEMPERATURES AND DEPARTURE FROM NORMAL



## U.S. Natural Gas Demand

<b>Gas Week -</b>	
<b>Average Daily Values (BCF/D):</b>	
<u>Last Year (BCF/d)</u>	
Power -	48.1
Total Demand -	105.3
<u>Last Week (BCF/d)</u>	
Power -	45.2
Total Demand -	107.4
[Next Report: August 28]	

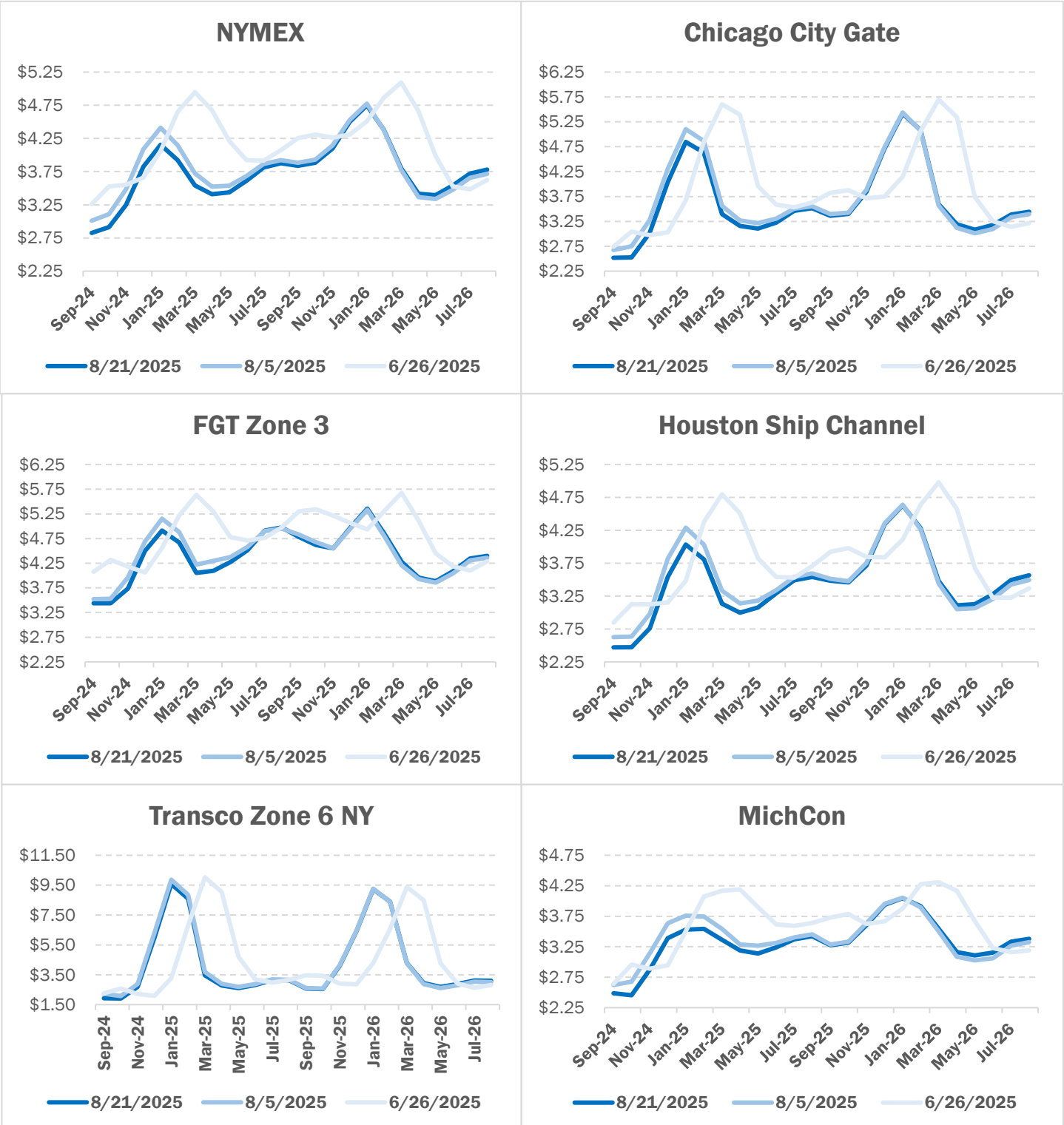
MANSFIELD EIA PREDICTION

**23**

# NATURAL GAS NEWS



## NATURAL GAS BASIS FUTURES



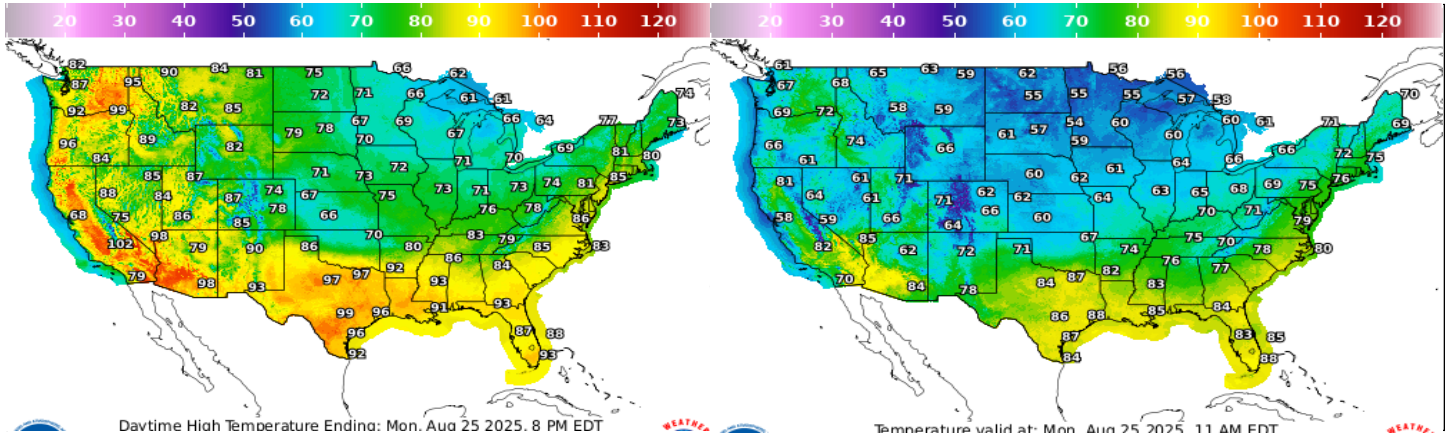
# NATURAL GAS NEWS



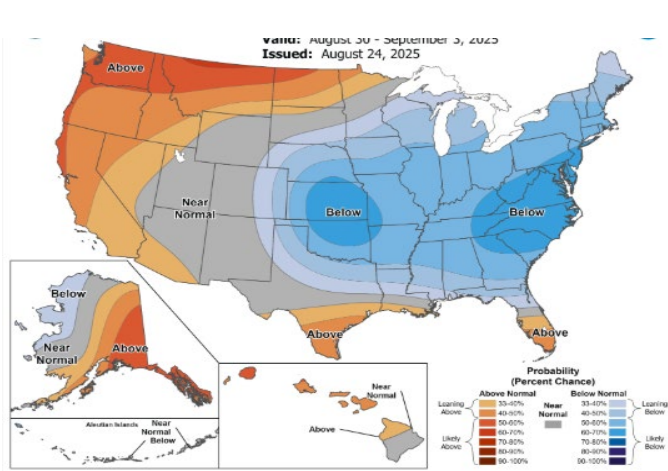
## WEATHER - HIGH / LOW TEMPERATURE - TOMORROW

### HIGH Temperature

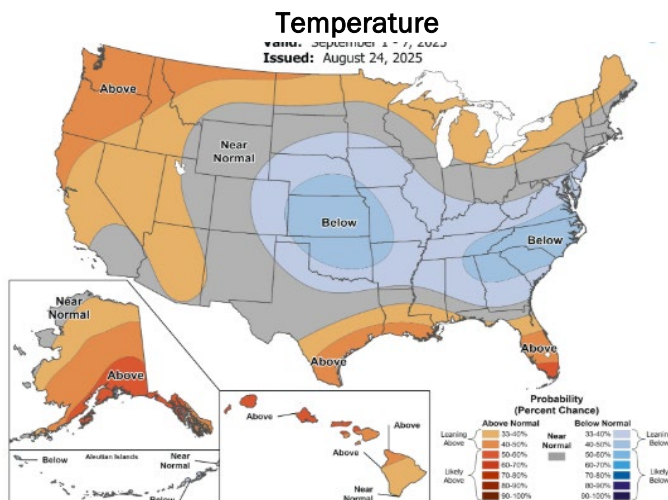
### LOW Temperature



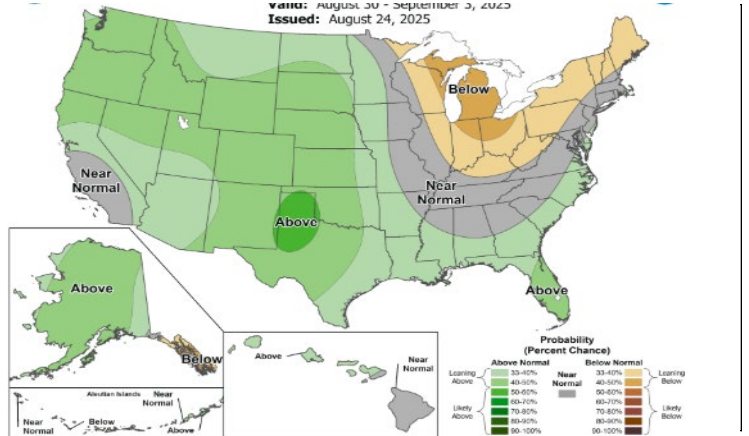
## WEATHER - 6 - 10 DAY OUTLOOK - NOAA



## WEATHER - 8 - 14 DAY OUTLOOK - NOAA



### Precipitation



### Precipitation

