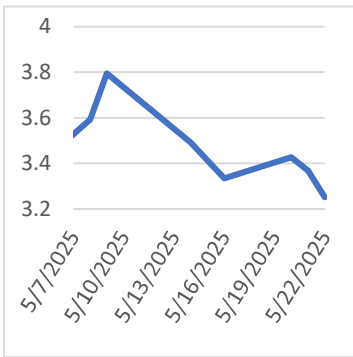


Last Week's Prompt
NYMEX



NYMEX NG Futures

Month	Close	Change
Jun-25	3.253	-0.115
Jul-25	3.639	-0.098
Aug-25	3.716	-0.102
Sep-25	3.695	-0.099
Oct-25	3.780	-0.090
Nov-25	4.133	-0.074
Dec-25	4.637	-0.062
Jan-26	4.924	-0.053
Feb-26	4.641	-0.043
Mar-26	4.196	-0.028
Apr-26	3.881	-0.015
May-26	3.877	-0.009
Jun-26	4.037	-0.002
Jul-26	4.206	-0.001
Aug-26	4.248	0.001
Sep-26	4.198	0.003
Oct-26	4.243	0.007
Nov-26	4.408	0.009
Dec-26	4.755	0.011
Jan-27	4.994	0.017
Feb-27	4.593	0.018
Mar-27	3.945	0.009
Apr-27	3.456	0.004
May-27	3.425	0.005
1 YR STRIP	4.031	-0.066
2025	3.836	-0.082

IN THE NEWS

Futures Slide Toward 200-Day Average as Storage, Weather Weigh

Natural gas futures dip toward the 200-day moving average at \$3.176 support after a massive 120 Bcf EIA storage injection raises bearish pressure. Weather-driven demand remains weak, and strong solar output continues to offset gas-fired electricity generation. Permian spot prices turn negative as production holds above 105 Bcf/d, signaling oversupply and infrastructure strain. U.S. natural gas futures are slipping, with the market eyeing a retest of the crucial 200-day moving average at \$3.176. The technical support has held firm twice in recent weeks, but renewed bearish pressure—fueled by record storage builds and weak short-term demand—may tip the balance this time. A breakdown below this level could trigger accelerated selling as traders assess the oversupplied market backdrop. At 13:07 GMT, Natural Gas Future...
<https://tinyurl.com/4e3tb559>

WGC Rising gas output, pipeline supplies slow China's LNG demand

BEIJING, May 23 (Reuters) - China's rising natural gas output and pipeline supply are slowing its liquefied natural gas imports this year, capping prices in the region, but industry executives expect LNG demand from its industrial and power sectors to grow in the long run. Imports to the world's top LNG importer fell to 20 million metric tons during the first four months of this year, down from nearly 29 million tons in the corresponding period last year, customs data showed, due to mild weather and buyer resistance to higher prices. Chinese firms are also re-selling instead of importing U.S. cargoes after Beijing imposed a 15% import tariff in a trade war with Washington. In the first quarter, China's domestic gas production rose 2.7 billion cubic metres (bcm) while pipeline gas imports i... For more info go to <https://tinyurl.com/2s3rabbu>

Will Massive Oil And Gas Reserves Mean A New 'Bakken Boom'

News about massive oil and gas reserves identified in southwest Wyoming's Mowry Shale formation has Josh Sorensen of Rock Springs reflecting on past booms. As president of Mountain States Pressure Service, Sorensen has over the years positioned his Rock Springs-based oil and gas well services company based on demand from producers moving into promising new territory. "I remember when the Bakken was announced in North Dakota. I remember it started off and it was just kind of a few people and then all of a sudden everybody was racing up there," Sorensen told Cowboy State Daily on Thursday, reacting to this week's announcement from the U.S. Department of Interior about the Mowry Shale. Based partly on research from the University of Wyoming, the federal Department of the Interior revealed the... For more info go to <https://tinyurl.com/3jfk949v>

Prompt Natural Gas (NG) Daily
Sentiment

BEARISH



RESISTANCE

\$ 3.718 & 3.796

SUPPORT

\$ 3.585 & 3.53

NATURAL GAS

Futures	Close
NG	\$3.253
Volume	31,446
Open Int.	27,378

Contact Us



Always on it

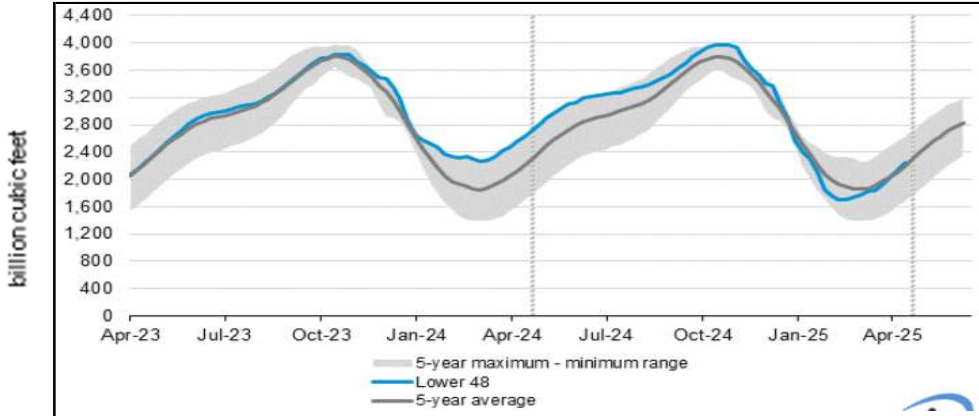
Mansfield Power & Gas
1025 Airport Pkwy
Gainesville, GA 30501
www.mansfield.energy

customer@mansfieldpowergas.com
Phone: (678) 207 - 3350

NATURAL GAS NEWS



WEEKLY GAS IN UNDERGROUND STORAGE WITH 5-YR RANGE



for week ending May 16, 2025 | Released: May 22, 2025 | Next Release: May 29, 2025

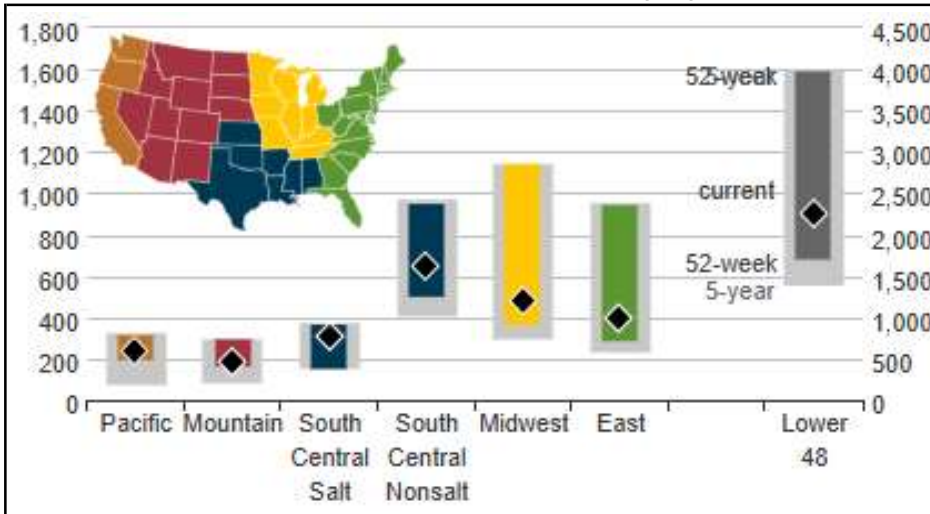
EIA Weekly Storage Actual and Surveys for

May 16, 2025

Released May 22, 2025

Range	110 to 140
S&P Global	120
FX Street	115
Investing.com	118

UNDERGROUND WORKING NAT GAS STORAGE AS OF 05/16/2025



Total Working Gas In Storage

2375 BCF

- 120 BCF (LAST WEEK)
- 333 BCF (LAST YEAR)
- 90 BCF (5-YEAR AVG)

U.S. Natural Gas Supply

Gas Week -

Average Daily Values (BCF/D):

<u>Last Year (BCF/d)</u>	
Dry Production -	100.6
Total Supply -	106.2

<u>Last Week (BCF/d)</u>	
Dry Production -	105.7
Total Supply -	110.0

[Next Report: May 29]

U.S. Natural Gas Demand

Gas Week -

Average Daily Values (BCF/D):

<u>Last Year (BCF/d)</u>	
Power -	33.4
Total Demand -	91.4

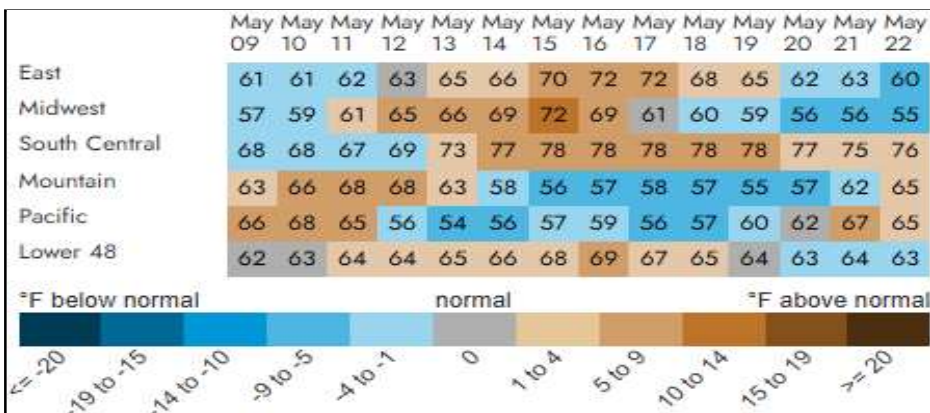
<u>Last Week (BCF/d)</u>	
Power -	30.2
Total Demand -	94.2

[Next Report: May 29]

MANSFIELD EIA PREDICTION

115

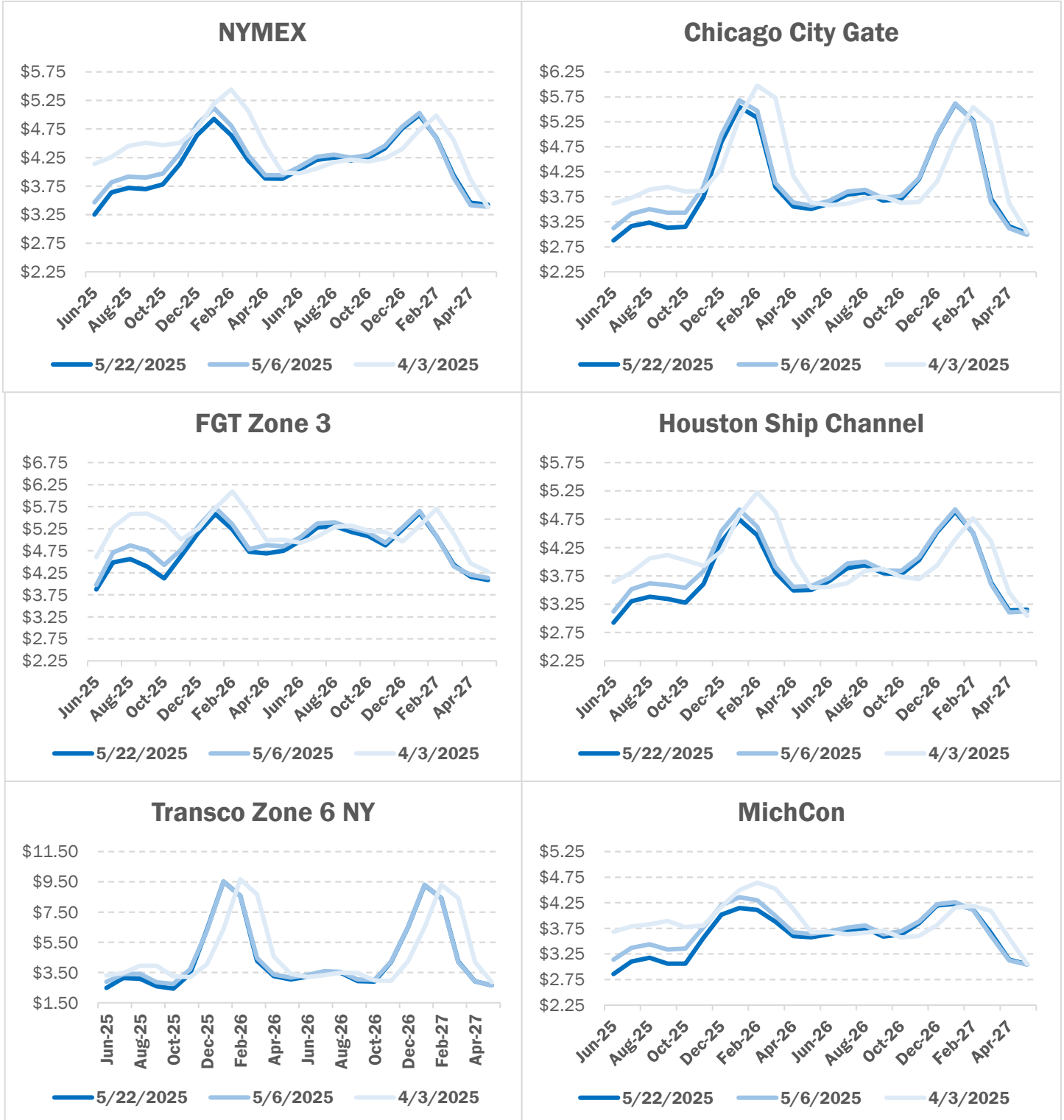
REGIONAL AVG TEMPERATURES AND DEPARTURE FROM NORMAL



NATURAL GAS NEWS



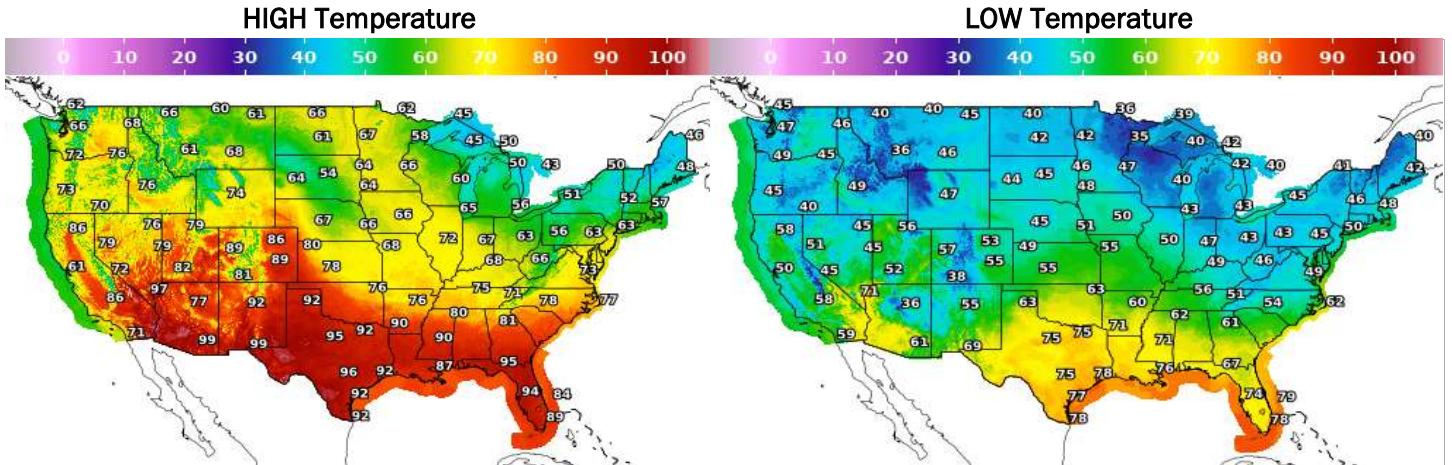
NATURAL GAS BASIS FUTURES



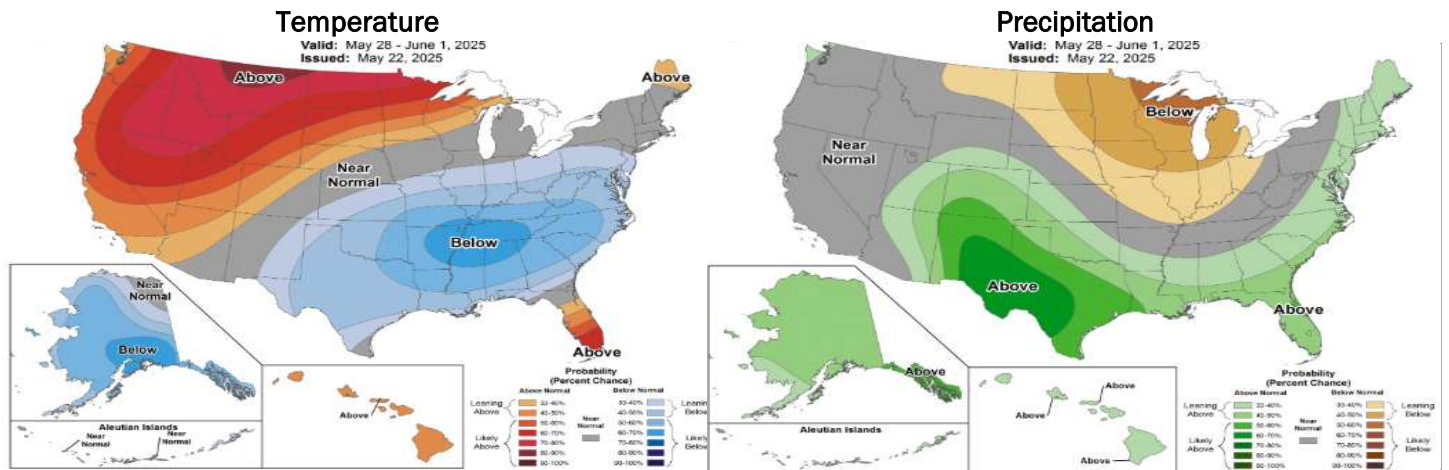
NATURAL GAS NEWS



WEATHER - HIGH / LOW TEMPERATURE - TOMORROW



WEATHER - 6 - 10 DAY OUTLOOK - NOAA



WEATHER - 8 - 14 DAY OUTLOOK - NOAA

