



DIESEL GELLING

RESPONDING TO GELLED DIESEL FUEL

DIAGNOSING FUEL GELLING

How do you know if your fuel tank has gelled or is near gelling?

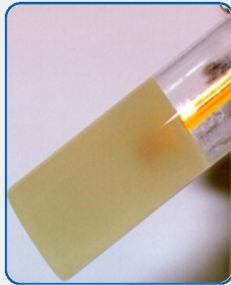
When diesel temperatures drop below the fuel's cloud point, wax crystals can form and thicken the fuel – a condition commonly referred to as “gelling.” If your diesel gels, your engines may struggle to start or fail to run. Here's how to recognize it and what you can do to fix it.

Symptoms of gelling in your bulk fuel tank typically include significantly reduced fuel flow or no fuel coming out of the pump. In your equipment, gelling may appear as engines sputtering, not starting, or performing sluggishly.



Clear Diesel

Should be transparent and bright



Cloud Point

Wax first begins to fall out of the fuel



Cold Filter Plug Point

Filter clogged – engine starvation

ICE OR GEL?

Water in your fuel tank can freeze below 32° F, creating symptoms similar to gelling. Winter additives and kerosene will not prevent water from freezing. See if your tank's filter has waxy build-up on it. If not, or if you see ice buildup, you may have an issue with water, not gelled fuel.

HOW TO FIX GELLED FUEL

Be prepared for any emergency caused by winter weather events with on-site emergency additives and a plan for remediation.

1 USE EMERGENCY ADDITIVES

Use an emergency re-liquefier such as Innospec Red Alert or Arsenal FIRST-AID. Pour the additive into your vehicle's filter and fuel tank after gelling to quickly dissolve waxy deposits and allow fuel to continue flowing.

2 ORDER EMERGENCY KEROSENE

If your fuel is not treated to meet the specific cold temperatures you're experiencing, you can add additional kerosene to improve the cloud point. If a storage tank is gelled, a short-load of kerosene may be the only option to restore operability. A tank with 4,800 gallons of diesel can be blended with 1,200-3,200 gallons of kerosene to create a 20%-40% kerosene blend.

3 PREVENT FUTURE GELLING

Increasing your treat rate for fuel, such as doubling the dose of ColdPRO additives or adding a kerosene blend, can proactively prevent gelling.

Need help? Contact a winter diesel expert today.

✉ ADDITIVES@MANSFIELD.OIL.COM

☎ 800-695-6626

🌐 WWW.MANSFIELD.ENERGY



BIGGER REACH. BROADER SOLUTIONS.
BETTER ADVICE. NOW YOU CAN