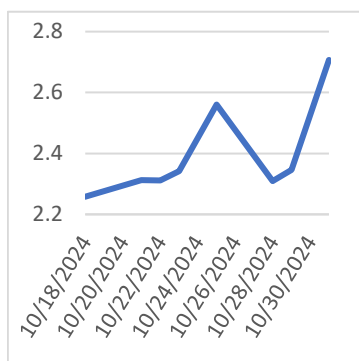


Monday, November 4, 2024

**Last Week's Prompt
NYMEX**



NYMEX NG Futures

Month	Close	Change
Dec-24	2.707	0.361
Jan-25	2.968	0.109
Feb-25	2.888	-0.229
Mar-25	2.674	-0.352
Apr-25	2.632	-0.147
May-25	2.717	-0.011
Jun-25	2.876	0.077
Jul-25	3.042	0.092
Aug-25	3.081	-0.027
Sep-25	3.057	-0.088
Oct-25	3.133	0.011
Nov-25	3.417	0.220
Dec-25	3.839	0.385
Jan-26	4.081	0.244
Feb-26	3.884	-0.189
Mar-26	3.453	-0.416
Apr-26	3.162	-0.266
May-26	3.187	0.044
Jun-26	3.329	0.161
Jul-26	3.478	0.171
Aug-26	3.515	0.062
Sep-26	3.487	-0.003
Oct-26	3.554	0.091
Nov-26	3.823	0.293
1 YR STRIP	2.933	0.001
2025	3.027	0.007

IN THE NEWS

Mansfield Market Assessment

Natural Gas has trading down from the December settle and continues to show weakness. Freeport LNG tripped this weekend around 2.8 Bcf had to find a home between shut-ins and storage. Permian Highway is starting planned maintenance tomorrow which reduces Production down 2 Bcf. The Gulf Coast Express maintenance is now over bringing 1.6 Bcf back to the market. Cash around the grid is very weak for tomorrow with key basins in the Northeast trading 1.10. Look for Production up there to scale back if we don't see any weather which is not likely thru the end of the 11-15. We expect the market to grind lower unless something material changes in the near term....

Natural Gas Continues to See Support After Gapping Lower

The natural gas market gapped a bit lower during the early hours on Monday, but we have recovered quite a bit, and as I record this video, we are testing the 50-day EMA. All of that being said, if we can continue to go higher, then I think we will reenter the previous consolidation range, which of course makes a certain amount of sense. After all, this is a time of year where natural gas demand does tend to pick up a little bit. And furthermore, you also have to keep in mind that natural gas is a well-known cyclical market. So, a lot of traders will just simply jump in at a certain time of year and hang on to it like yours truly. Now that doesn't mean that I do a lot of leverage with my position. It's just a small part of my portfolio every year. So, I do think that we may try to build up e... For more info go to <https://tinyurl.com/sska8fje>

Europe's Gas Crisis Isn't Over Despite Full Storage

A year ago, European politicians declared the gas crisis from the near-complete halt of Russian supplies was over. The EU had turned to alternative natural gas suppliers, assuring there would be enough to prevent shortages and steep prices. These assurances now appear premature. Last week, European benchmark gas prices hit the highest in a year on the news of a production outage in Norway. On Friday, the Dutch Title Transfer Facility hit 43.68 euros per MWh, which was the highest since December 2023. It seems the future holds more price spikes—because that spike occurred despite full European gas storage caverns ahead of peak demand season. It all started innocently enough. On Tuesday, Norway's state major Equinor suspended production at one of its platforms due to a smoke alert. Norway is... For more info go to <https://tinyurl.com/xm8vuwzh>

**Prompt Natural Gas (NG)
Daily Sentiment**

BEARISH



RESISTANCE
2.714 & 2.765
SUPPORT
2.622 & 2.581

NATURAL GAS

Futures	Close
NG	\$2.707
Volume	71,888
Open Int.	282,625

Contact Us



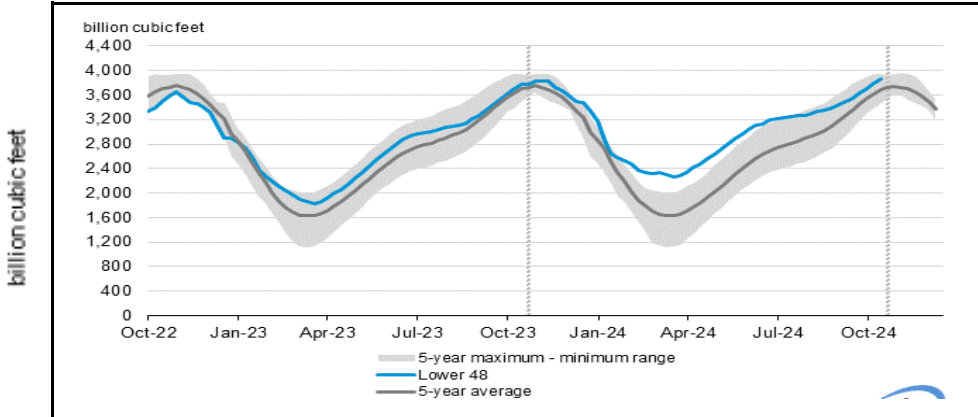
Always on it

Mansfield Power & Gas
1025 Airport Pkwy
Gainesville, GA 30501
www.mansfield.energy

customer@mansfieldpowergas.com
Phone: (678) 207 - 3350

NATURAL GAS NEWS

WEEKLY GAS IN UNDERGROUND STORAGE WITH 5-YR RANGE



for week ending October 25, 2024 | Released: October 31, 2024 | Next Release: November 07, 2024

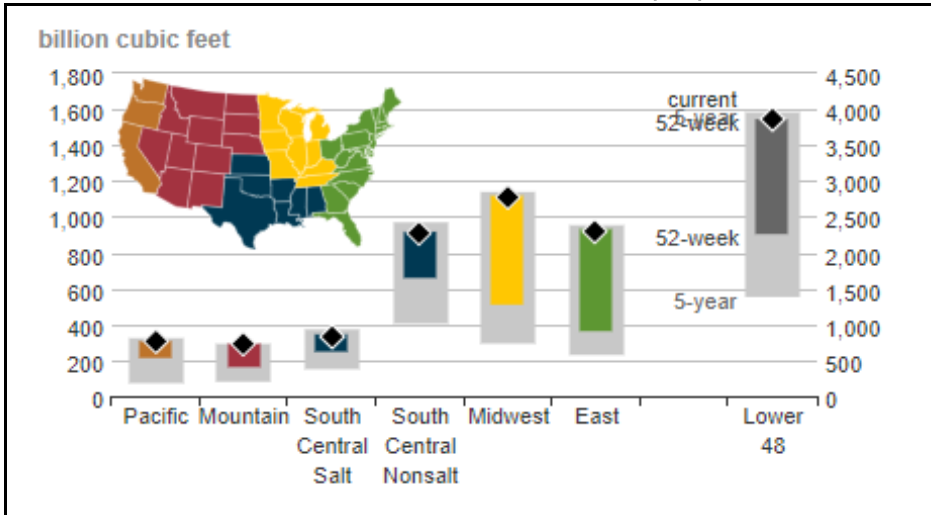
EIA Weekly Storage Actual and Surveys for

October 25, 2024

Released October 31, 2024

Range	75 to 90
S&P Global	82
FX Street	81
Investing.com	79

UNDERGROUND WORKING NAT GAS STORAGE AS OF 10/25/2024



Total Working Gas In Storage

3863 BCF

78 BCF (LAST WEEK)

107 BCF (LAST YEAR)

178 BCF (5-YEAR AVG)

U.S. Natural Gas Supply

Gas Week -

Average Daily Values (BCF/D):

Last Year (BCF/d)

Dry Production - 103.7

Total Supply - 108.9

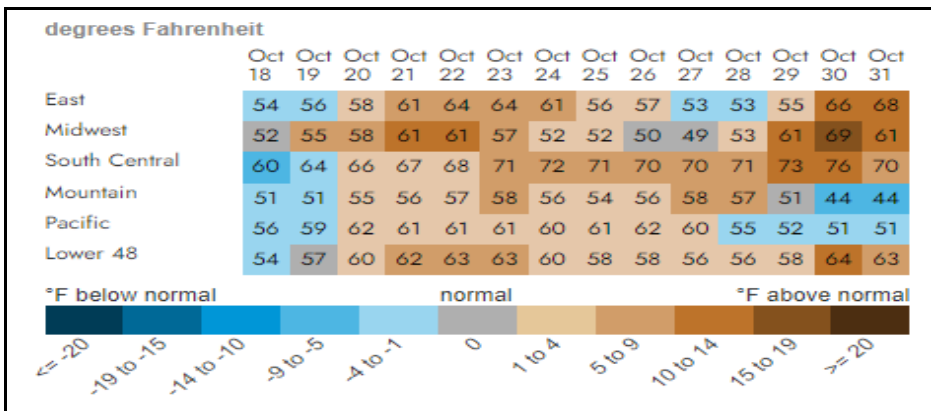
Last Week (BCF/d)

Dry Production - 101.5

Total Supply - 107.0

[Next Report: November 07]

REGIONAL AVG TEMPERATURES AND DEPARTURE FROM NORMAL



U.S. Natural Gas Demand

Gas Week -

Average Daily Values (BCF/D):

Last Year (BCF/d)

Power - 33

Total Demand - 98.9

Last Week (BCF/d)

Power - 32.2

Total Demand - 96.3

[Next Report: November 07]

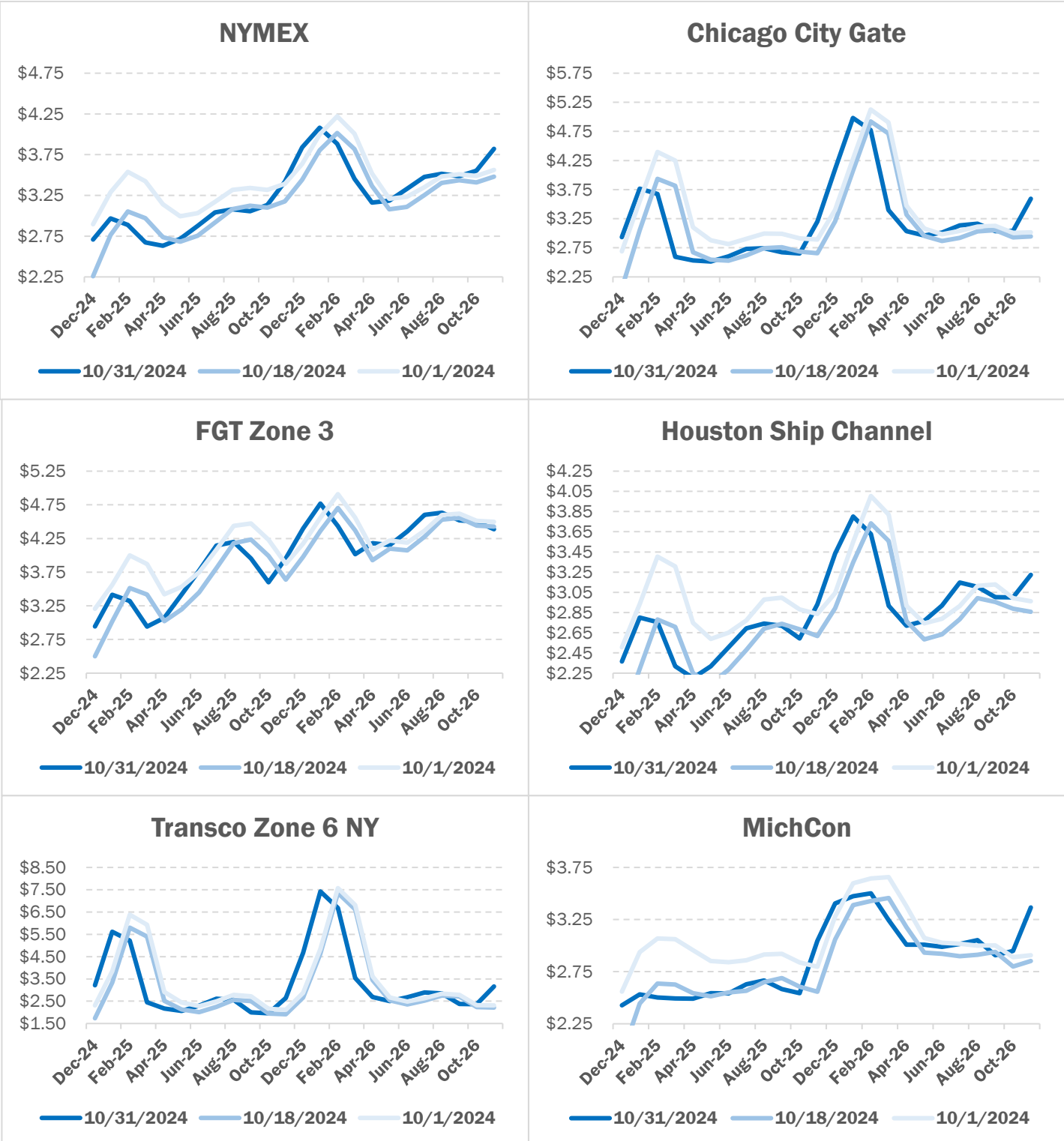
MANSFIELD EIA PREDICTION

80

NATURAL GAS NEWS



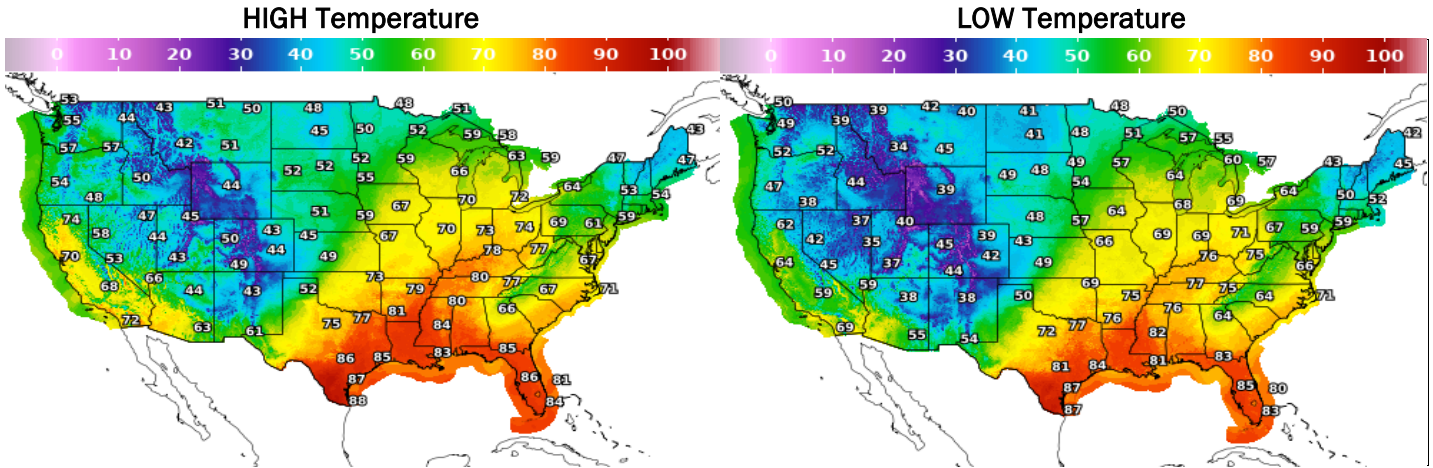
NATURAL GAS BASIS FUTURES



NATURAL GAS NEWS



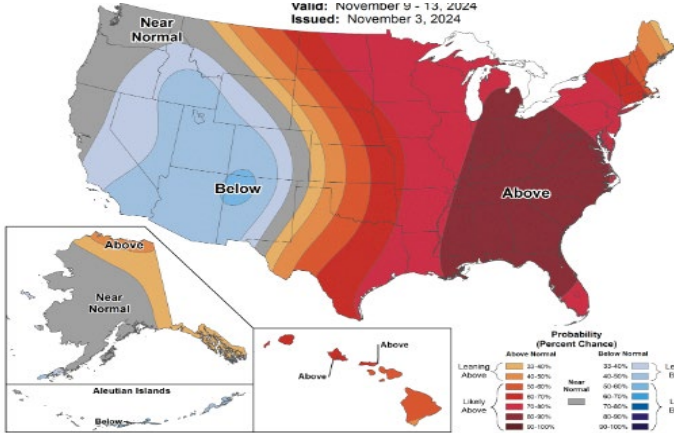
WEATHER - HIGH / LOW TEMPERATURE - TOMORROW



WEATHER - 6 - 10 DAY OUTLOOK - NOAA

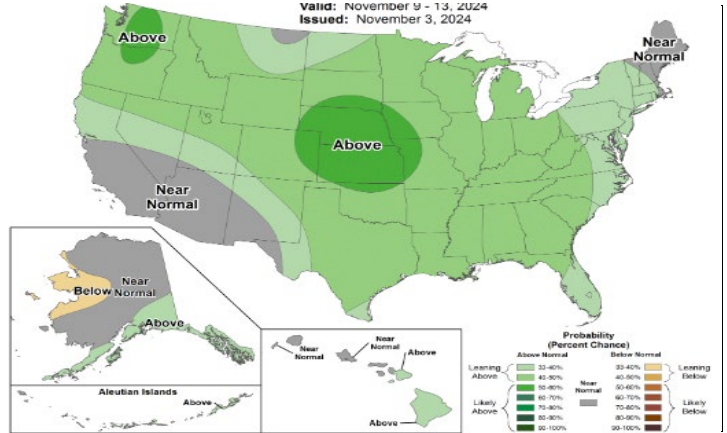
Temperature

Valid: November 9 - 13, 2024
Issued: November 3, 2024



Precipitation

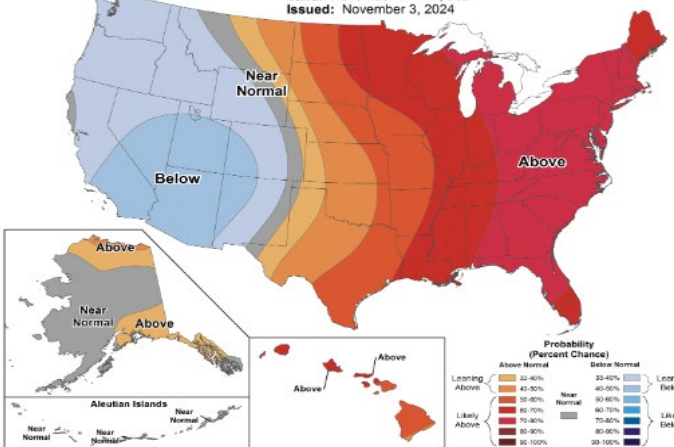
Valid: November 9 - 13, 2024
Issued: November 3, 2024



WEATHER - 8 - 14 DAY OUTLOOK - NOAA

Temperature

Valid: November 11 - 17, 2024
Issued: November 3, 2024



Precipitation

Valid: November 11 - 17, 2024
Issued: November 3, 2024

