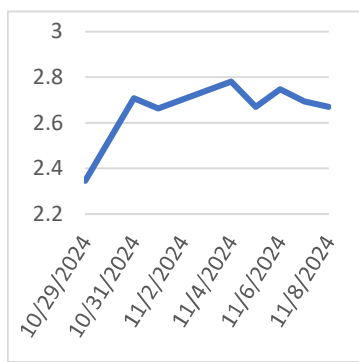


Monday, November 11, 2024

**Last Week's Prompt  
NYMEX**



**NYMEX NG Futures**

| Month      | Close | Change |
|------------|-------|--------|
| Dec-24     | 2.669 | -0.024 |
| Jan-25     | 2.922 | -0.026 |
| Feb-25     | 2.827 | -0.027 |
| Mar-25     | 2.608 | -0.022 |
| Apr-25     | 2.590 | -0.013 |
| May-25     | 2.694 | -0.009 |
| Jun-25     | 2.848 | -0.014 |
| Jul-25     | 3.021 | -0.015 |
| Aug-25     | 3.065 | -0.015 |
| Sep-25     | 3.047 | -0.016 |
| Oct-25     | 3.132 | -0.017 |
| Nov-25     | 3.401 | -0.018 |
| Dec-25     | 3.825 | -0.017 |
| Jan-26     | 4.053 | -0.016 |
| Feb-26     | 3.865 | -0.009 |
| Mar-26     | 3.428 | -0.016 |
| Apr-26     | 3.142 | -0.007 |
| May-26     | 3.172 | -0.006 |
| Jun-26     | 3.304 | -0.006 |
| Jul-26     | 3.450 | -0.002 |
| Aug-26     | 3.486 | -0.002 |
| Sep-26     | 3.459 | -0.003 |
| Oct-26     | 3.531 | -0.004 |
| Nov-26     | 3.782 | -0.016 |
| 1 YR STRIP | 2.902 | -0.018 |
| 2025       | 2.998 | -0.014 |

**IN THE NEWS**

**Mansfield Market Assessment**

The weather turned a bit colder over the weekend, moving closer to the 10-year average for this time of year. While it's not extremely cold yet, the market is on edge, as no one wants to be caught short when the real cold weather arrives. Marcellus production is down today, with only 32 Bcf/day being reported. The market is approaching the \$3 mark, currently up 28 cents. We'll have to see if this colder trend is just temporary or if it has some staying power. Given the reduced production levels, it seems unlikely that we'll drop back down to test the lows....

**Futures Surge as Gulf Supply Disruptions Shake Market**

Natural gas futures surge as Storm Rafael cuts 16% of Gulf supply, holding above \$2.825 with resistance at \$3.044 in sight. Storm Rafael shuts down a quarter of Gulf oil, disrupting 310 million cubic feet of natural gas and pushing futures higher. With Gulf production halted, natural gas futures eye \$3.044 resistance. Support at \$2.825 signals possible bullish momentum. Speculation over colder weather adds volatility to natural gas futures as traders await updated forecasts for clarity. Storm Rafael triggers production losses of 2.07 million barrels of oil and 1.12 billion cubic feet of natural gas in the Gulf. U.S. natural gas futures surged Monday, opening with a gap higher on the daily chart. This move confirms last Monday's closing price reversal bottom at \$2.514 but hasn't yet shifted... For more info go to <https://tinyurl.com/36ekbrvv>

**Can the Short-Covering Rally Hold Amid Temps and Ample Supply?**

Natural gas futures show brief rally but face bearish pressure with ample supply and mild weather forecasts. EIA reports U.S. gas storage at 3,932 Bcf, exceeding the five-year average by 215 Bcf—dampening price outlook. Warm temperatures in the U.S. South and East curb heating demand, maintaining bearish pressure on natural gas. Potential short-covering rally hinges on breaking \$2.818 resistance; bearish if futures fall below \$2.514. Freeport LNG disruptions could curb exports, leaving more supply in the U.S. and pushing prices lower. U.S. natural gas futures traded in a tight range this week, primarily driven by opposing factors of mild weather and concerns over supply. The market experienced a technical bounce on Monday, fueled by a closing price reversal bottom, which lifted prices temp... For more info go to <https://tinyurl.com/43e667f2>

**Prompt Natural Gas (NG)  
Daily Sentiment**

**BEARISH**



RESISTANCE  
2.73 & 2.792  
SUPPORT  
2.625 & 2.582

**NATURAL GAS**

| Futures   | Close   |
|-----------|---------|
| NG        | \$2.669 |
| Volume    | 120,890 |
| Open Int. | 220,684 |

**Contact Us**



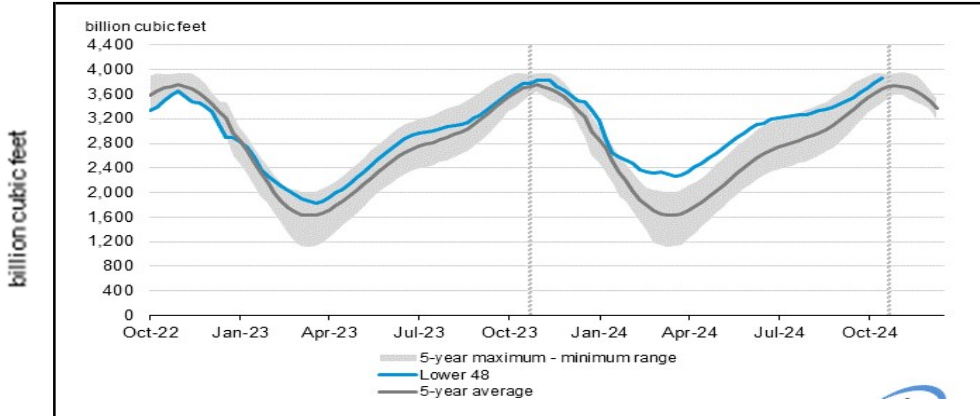
Always on it

**Mansfield Power & Gas**  
1025 Airport Pkwy  
Gainesville, GA 30501  
[www.mansfield.energy](http://www.mansfield.energy)

customer@mansfieldpowergas.com  
Phone: (678) 207 - 3350

# NATURAL GAS NEWS

## WEEKLY GAS IN UNDERGROUND STORAGE WITH 5-YR RANGE



for week ending November 01, 2024 | Released: November 07, 2024 | Next Release: November 14, 2024

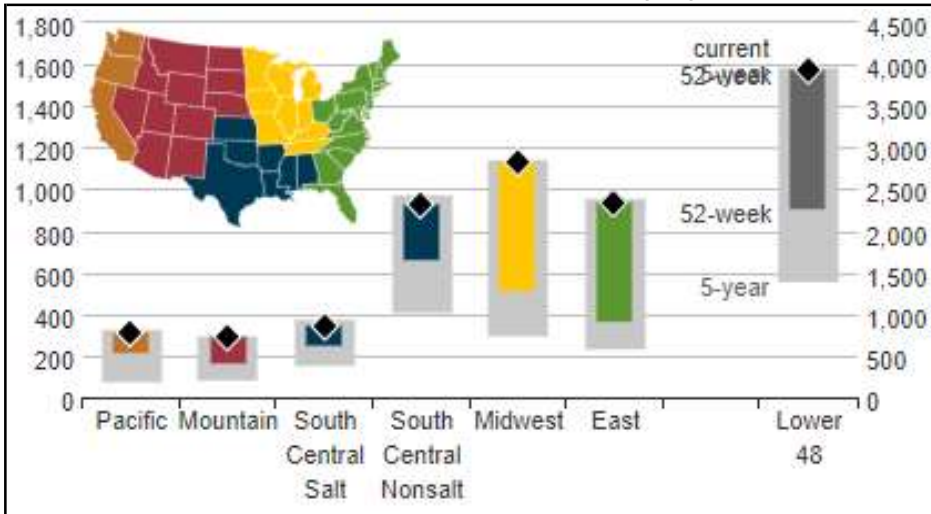
### EIA Weekly Storage Actual and Surveys for

November 1, 2024

Released November 07, 2024

|               |          |
|---------------|----------|
| Range         | 62 to 71 |
| S&P Global    | 66       |
| FX Street     | 69       |
| Investing.com | 69       |

## UNDERGROUND WORKING NAT GAS STORAGE AS OF 11/01/2024



### Total Working Gas In Storage

**3932 BCF**

69 BCF (LAST WEEK)

157 BCF (LAST YEAR)

215 BCF (5-YEAR AVG)

### U.S. Natural Gas Supply

#### Gas Week -

Average Daily Values (BCF/D):

Last Year (BCF/d)

Dry Production - 104.3

Total Supply - 109.9

Last Week (BCF/d)

Dry Production - 103.2

Total Supply - 109.1

[Next Report: November 14]

### U.S. Natural Gas Demand

#### Gas Week -

Average Daily Values (BCF/D):

Last Year (BCF/d)

Power - 31.9

Total Demand - 108.1

Last Week (BCF/d)

Power - 34.3

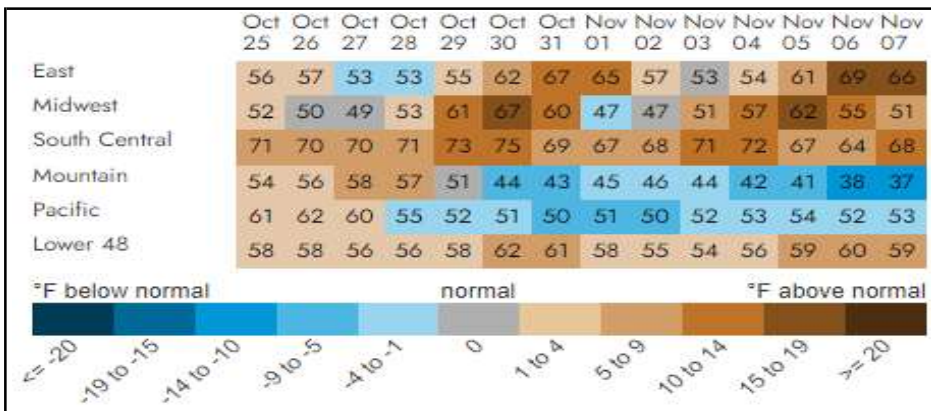
Total Demand - 100.4

[Next Report: November 07]

MANSFIELD EIA PREDICTION

**68**

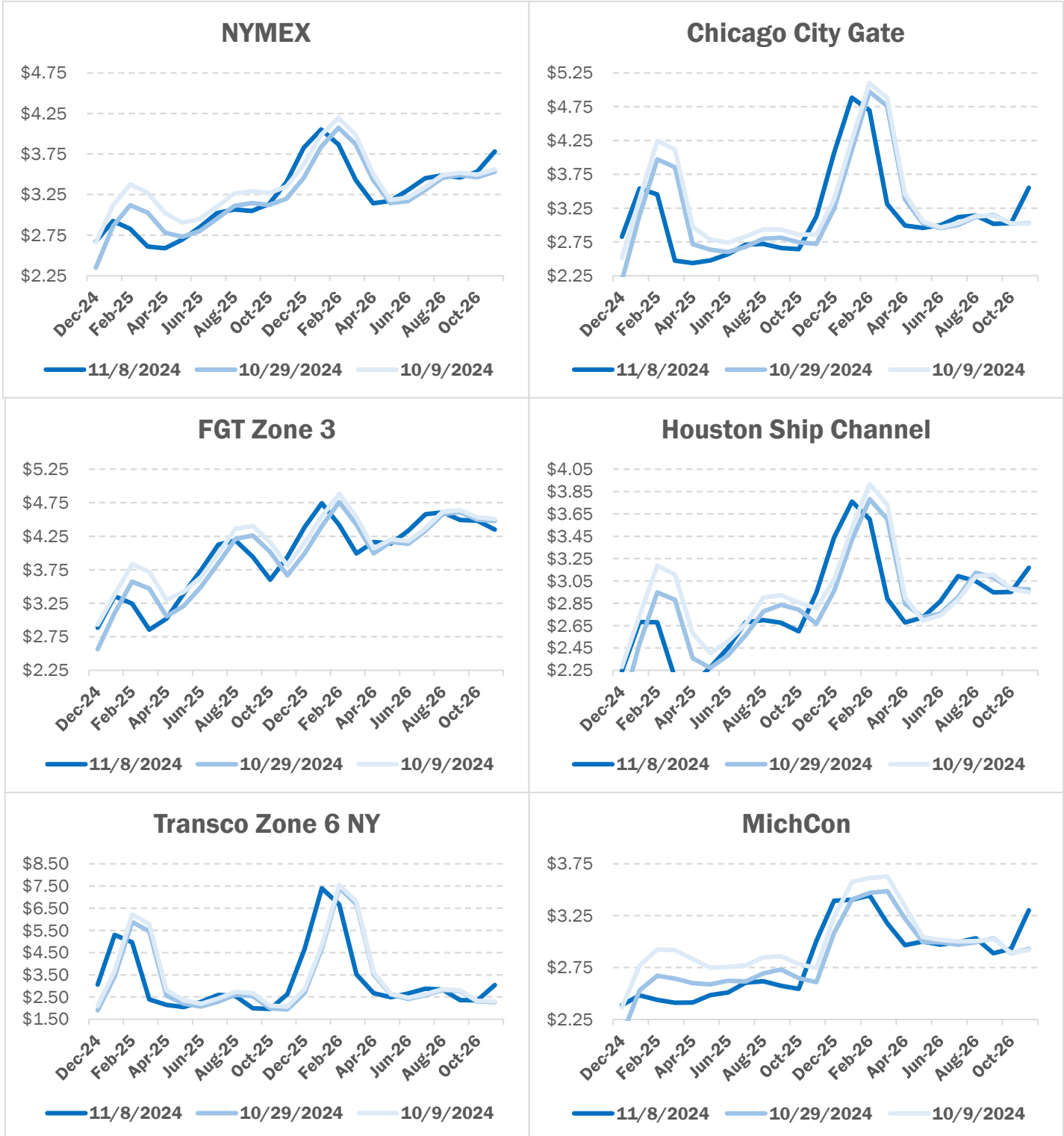
## REGIONAL AVG TEMPERATURES AND DEPARTURE FROM NORMAL



# NATURAL GAS NEWS



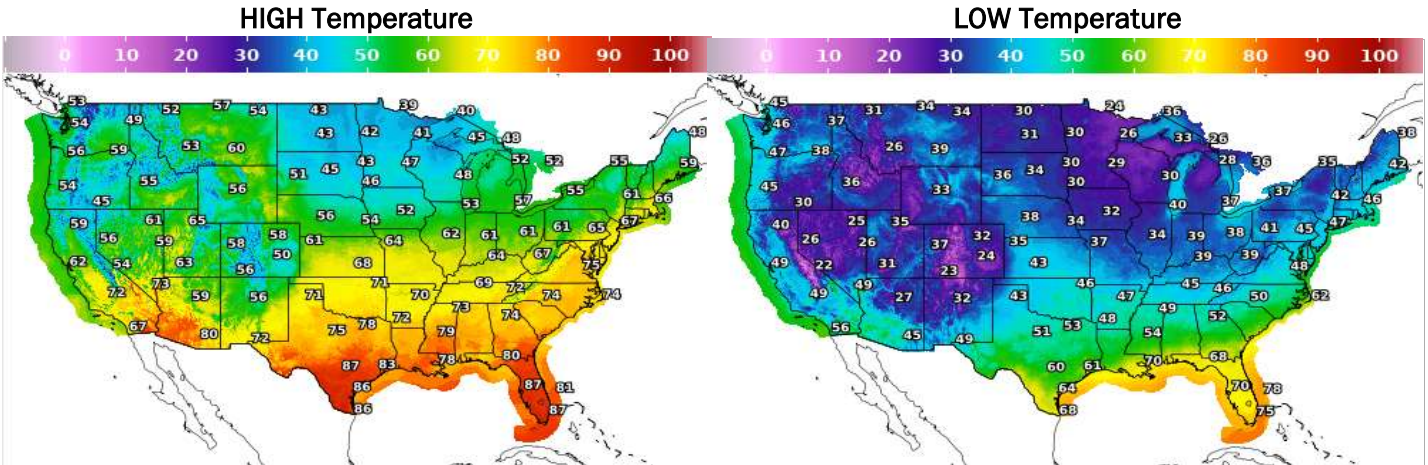
## NATURAL GAS BASIS FUTURES



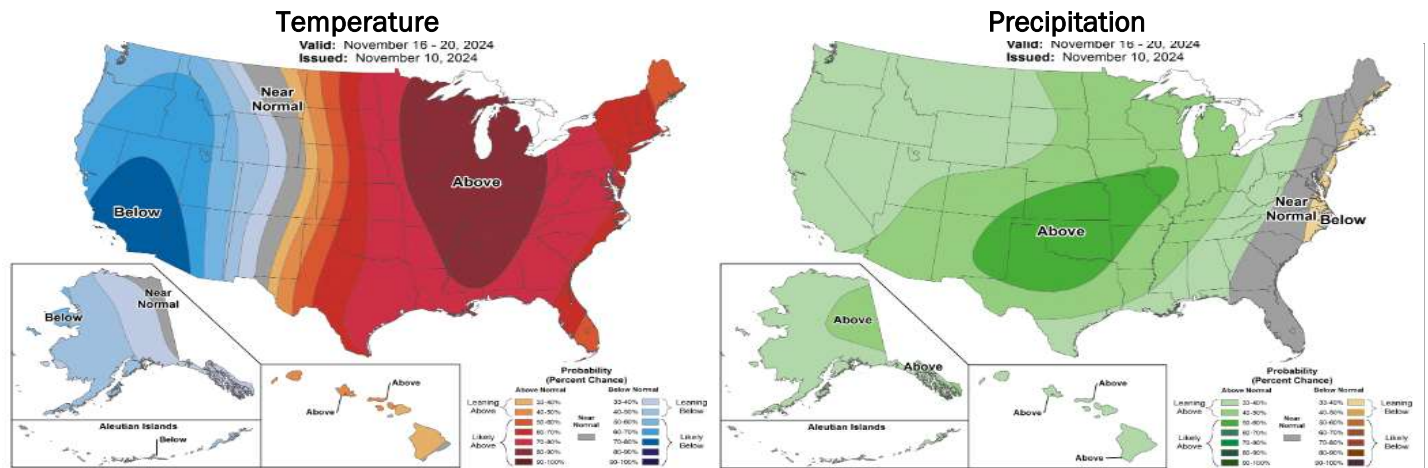
# NATURAL GAS NEWS



## WEATHER - HIGH / LOW TEMPERATURE - TOMORROW



## WEATHER - 6 - 10 DAY OUTLOOK - NOAA



## WEATHER - 8 - 14 DAY OUTLOOK - NOAA

