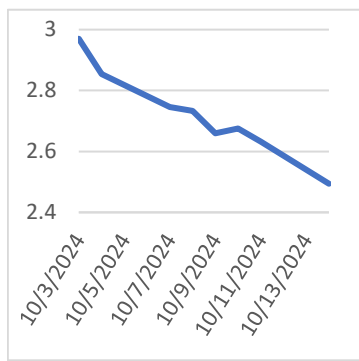


Tuesday, October 15, 2024

**Last Week's Prompt
NYMEX**



NYMEX NG Futures

Month	Close	Change
Nov-24	2.494	-0.138
Dec-24	2.930	-0.117
Jan-25	3.192	-0.104
Feb-25	3.093	-0.097
Mar-25	2.861	-0.087
Apr-25	2.760	-0.078
May-25	2.823	-0.068
Jun-25	2.981	-0.066
Jul-25	3.155	-0.058
Aug-25	3.188	-0.055
Sep-25	3.167	-0.055
Oct-25	3.244	-0.057
Nov-25	3.524	-0.054
Dec-25	3.886	-0.056
Jan-26	4.097	-0.055
Feb-26	3.895	-0.053
Mar-26	3.419	-0.048
Apr-26	3.104	-0.045
May-26	3.130	-0.045
Jun-26	3.269	-0.040
Jul-26	3.421	-0.035
Aug-26	3.448	-0.034
Sep-26	3.426	-0.034
Oct-26	3.497	-0.036
1 YR STRIP	2.991	-0.082
2025	3.156	-0.056

IN THE NEWS

Natural Gas Continues to See Selling

The natural gas market pulled back a bit in the early trading on Monday, as the market continued to look at the hurricane as a driver previously, but now will start to focus on the upcoming winter in the United States. The natural gas markets have drifted a little bit lower during the trading session on Monday in the early hours as market participants continue to see a lot of noisy behavior. That being said, I think it's probably only a matter of time before we have to ask questions of \$2.80 underneath, which is an area that previously has been supported. If we break down below there, we could at least in theory be looking at a bit of a "head and shoulders pattern", which of course has people standing up and paying attention. And for what it is worth, it could kick off an 11% drop, which would have this market perh... For more info go to <https://tinyurl.com/2mhrxx6c>

Nat-Gas Prices Tumble as US Weather Forecasts Warm

November Nymex natural gas (NGX24) on Monday closed down by -0.138 (-5.24%). Nov nat-gas prices Monday tumbled to a 3-week nearest-futures low and closed sharply lower. Forecasts for warmer US temperatures that will reduce heating demand for nat-gas are weighing on prices. Forecaster Maxar Technologies said Monday that forecasts shifted warmer for the Midwest and eastern part of the US for October 19-23. Also, fuel demand concerns are undercutting nat-gas prices. As of Monday afternoon, about 400,000 people in Florida were still without power due to outages caused by Hurricane Milton, reducing nat-gas demand from electricity providers. Lower-48 state dry gas production Monday was 101.6 bcf/day (-2.0% y/y), according to BNEF. ... For more info go to <https://tinyurl.com/mptwc2y7>

Natural Gas Analysis Following China's Inflation Decline

Crude oil prices dropped on Monday after China's Consumer Price Index (CPI) increased by only 0.4% in September, missing the expected 0.7%. The lower-than-expected CPI points to weaker consumer spending in China, a major driver of global energy demand. This slowdown could lead to reduced consumption of oil and natural gas. Businesses and households scale back energy usage during economic downturns. Consequently, crude oil and natural gas (NG) prices dropped due to weaker demand and excess supply. Moreover, deflationary pressure was reflected in China's Producer Price Index (PPI) data. ... For more info go to <https://tinyurl.com/3vkjfcye>

**Prompt Natural Gas (NG)
Daily Sentiment**

BEARISH



RESISTANCE
2.587 & 2.681
SUPPORT
2.438 & 2.383

NATURAL GAS

Futures	Close
NG	\$2.494
Volume	30,604
Open Int.	145,711

Contact Us



Always on it

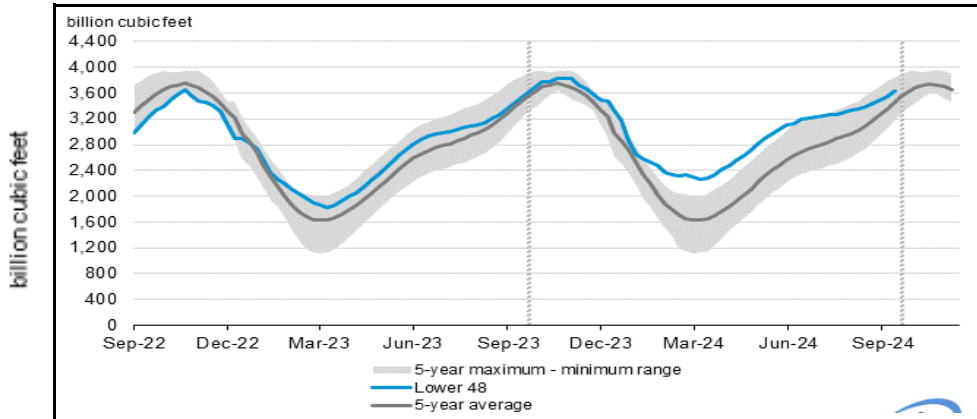
Mansfield Power & Gas
1025 Airport Pkwy
Gainesville, GA 30501
www.mansfield.energy

customer@mansfieldpowergas.com
Phone: (678) 207 - 3350

NATURAL GAS NEWS



WEEKLY GAS IN UNDERGROUND STORAGE WITH 5-YR RANGE



for week ending October 04, 2024 | Released: October 10, 2024 | Next Release: October 17, 2024

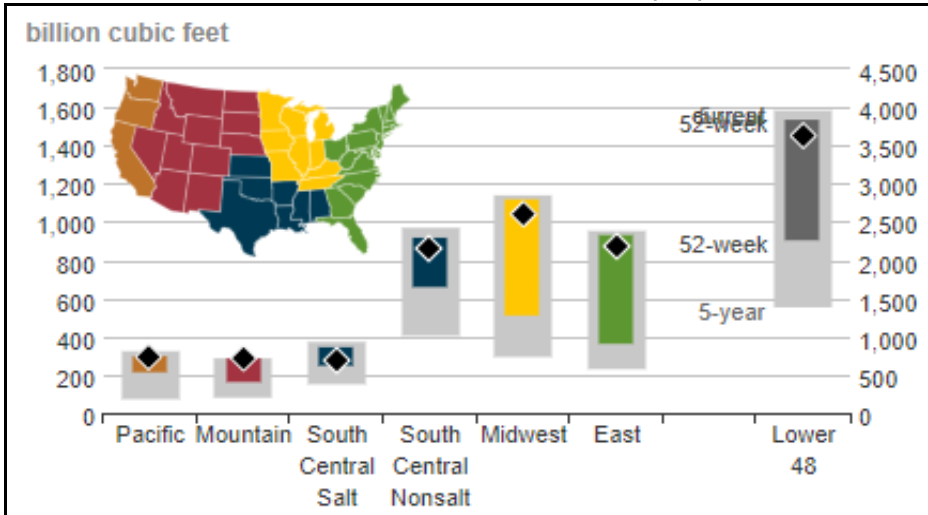
EIA Weekly Storage Actual and Surveys for

October 4, 2024

Released October 10, 2024

Range	65 to 75
S&P Global	72
FX Street	59
Investing.com	59

UNDERGROUND WORKING NAT GAS STORAGE AS OF 10/04/2024



Total Working Gas In Storage

3629 BCF

82 BCF (LAST WEEK)

124 BCF (LAST YEAR)

176 BCF (5-YEAR AVG)

U.S. Natural Gas Supply

Gas Week -

Average Daily Values (BCF/D):

Last Year (BCF/d)

Dry Production - 102.7

Total Supply - 108.1

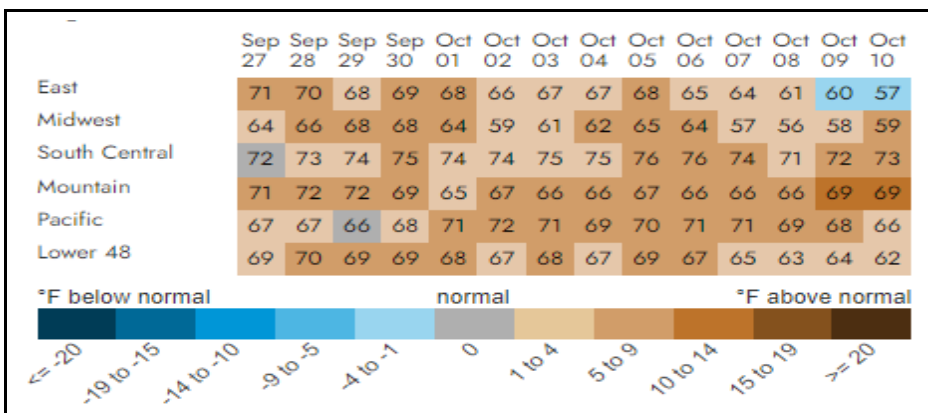
Last Week (BCF/d)

Dry Production - 101.6

Total Supply - 107.3

[Next Report: October 17]

REGIONAL AVG TEMPERATURES AND DEPARTURE FROM NORMAL



U.S. Natural Gas Demand

Gas Week -

Average Daily Values (BCF/D):

Last Year (BCF/d)

Power - 33.7

Total Demand - 93.9

Last Week (BCF/d)

Power - 38.7

Total Demand - 95.7

[Next Report: October 17]

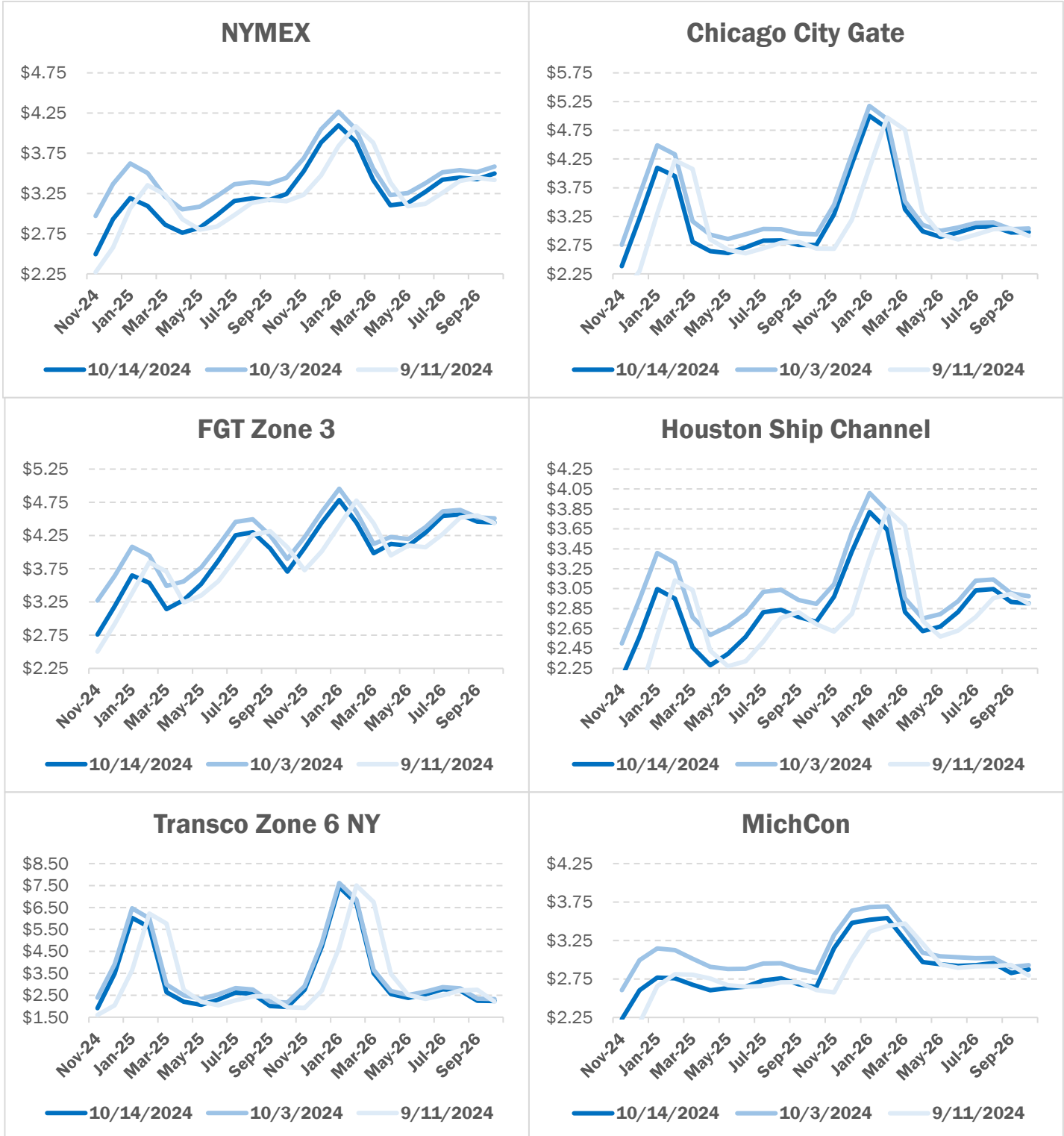
MANSFIELD EIA PREDICTION

72

NATURAL GAS NEWS



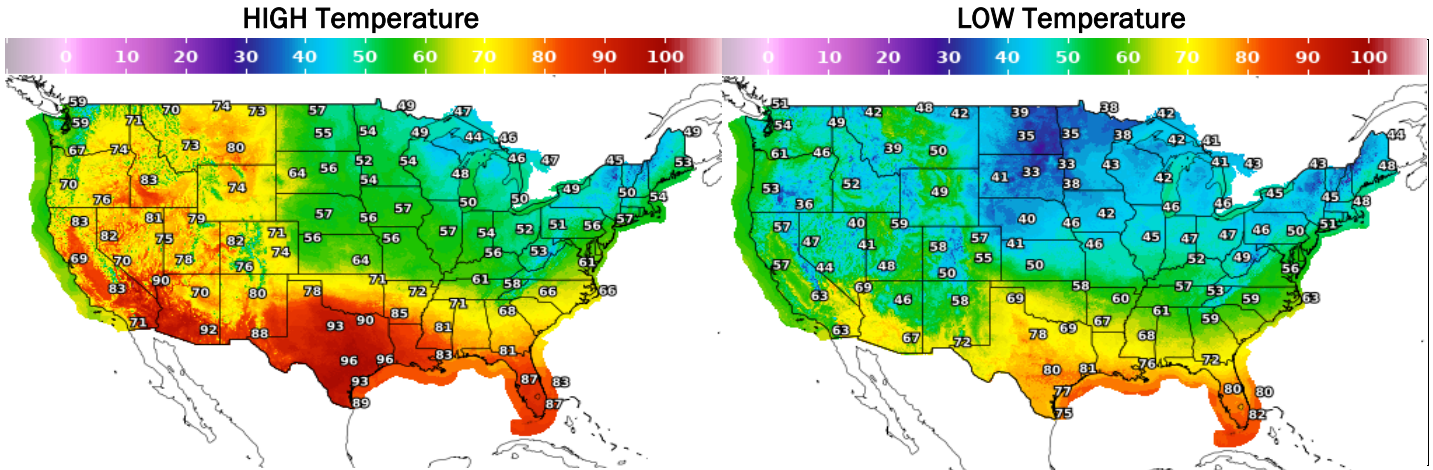
NATURAL GAS BASIS FUTURES



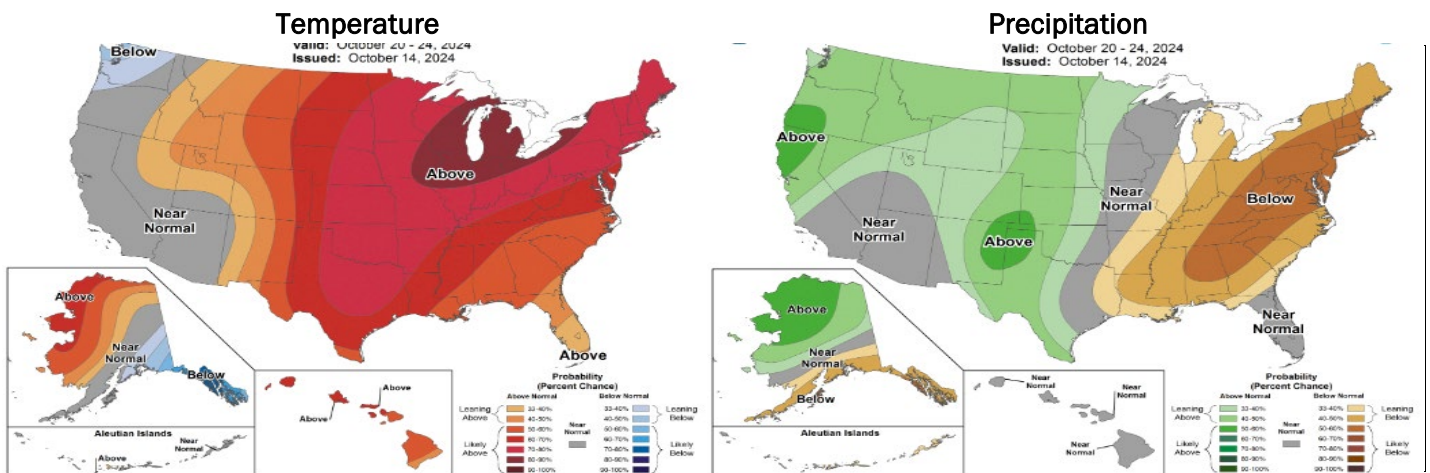
NATURAL GAS NEWS



WEATHER - HIGH / LOW TEMPERATURE - TOMORROW



WEATHER - 6 - 10 DAY OUTLOOK - NOAA



WEATHER - 8 - 14 DAY OUTLOOK - NOAA

