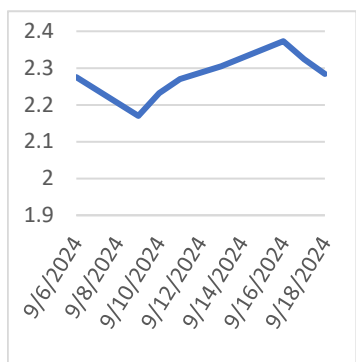


NATURAL GAS



Thursday, September 19, 2024

Last Week's Prompt NYMEX



NYMEX NG Futures

Month	Close	Change
Oct-24	2.284	-0.040
Nov-24	2.565	-0.048
Dec-24	3.024	-0.026
Jan-25	3.309	-0.018
Feb-25	3.194	-0.011
Mar-25	2.909	-0.006
Apr-25	2.794	-0.004
May-25	2.832	-0.005
Jun-25	2.972	0.001
Jul-25	3.131	0.007
Aug-25	3.164	0.005
Sep-25	3.145	0.005
Oct-25	3.227	0.003
Nov-25	3.491	-0.003
Dec-25	3.876	-0.007
Jan-26	4.096	-0.004
Feb-26	3.881	-0.007
Mar-26	3.408	-0.006
Apr-26	3.104	-0.002
May-26	3.131	0.000
Jun-26	3.260	0.002
Jul-26	3.401	0.005
Aug-26	3.438	0.004
Sep-26	3.413	0.004
1 YR STRIP 2025	2.944	-0.012
	3.170	-0.001

IN THE NEWS

Prices Slip Below Key Moving Average, Eyes on EIA Report

U.S. natural gas futures are trending lower on Thursday as traders await the Energy Information Administration's (EIA) weekly storage report. After slipping below the 50-day moving average of \$2.285, the market now hovers near critical support levels at \$2.252 and \$2.214. These pivots are likely to dictate short-term market direction leading into today's close, particularly as traders digest storage data and supply-demand balances. Adding to the market's current volatility is a shift in the key resistance level. The main top has dropped from \$2.482 to \$2.436, making this the new threshold to watch. A break above this level could trigger a trend reversal, setting the next target at \$2.757. Despite this potential, the front-month futures contract is down for the third consecutive session, weighed by changing autumn ... For more info go to <https://tinyurl.com/mr22pc2v>

World's largest renewable natural gas plant to open in Louisiana

Woodland Biofuels plans to build a \$1.35 billion facility in St. John Parish to produce biofuel, the company announced Tuesday. Why it matters: It will be the world's largest carbon-negative "renewable" natural gas plant, officials say. The big picture: The Toronto-based company expects to build at the Globalplex multimodal facility at the Port of South Louisiana in Reserve. Operations are scheduled to start in 2028, according to a press release. The project will create 110 direct jobs and about 500 construction jobs. Louisiana Economic Development offered Woodland an incentive package that includes a \$10 million performance-based grant. The company is also expected to participate in the state's programs that offer industrial tax exemptions and cash rebates based on payroll. It also plans to... For more info go to <https://tinyurl.com/3ux3v8e6>

Energy Bosses Demand Consistent Policies On Natural Gas

A number of leading energy executives have bemoaned the lack of clarity and consistency in U.S. policies on natural gas at a major international event in Houston. Gastech 2024 - one of the energy industry's leading fixtures - being held from September 17 to 20 in the Texan city described as the energy capital of the U.S., saw a number of industry bosses criticize the Biden Administration over its stance on natural gas exploration and production as well as permits for liquefied natural gas (LNG) exports. Lorenzo Simonelli, CEO of Baker Hughes, Tuesday said: "It would appear we do not have a cohesive, collective decision on how policy should be rolled out and also the sustainability of that policy for sustainable energy development."... For more info go to <https://tinyurl.com/msknuz6t>

Prompt Natural Gas (NG) Daily Sentiment

BEARISH



RESISTANCE
2.627 & 2.69
SUPPORT
2.531 & 2.498

NATURAL GAS

Futures	Close
NG	\$2.284
Volume	45,014
Open Int.	103,903

Contact Us



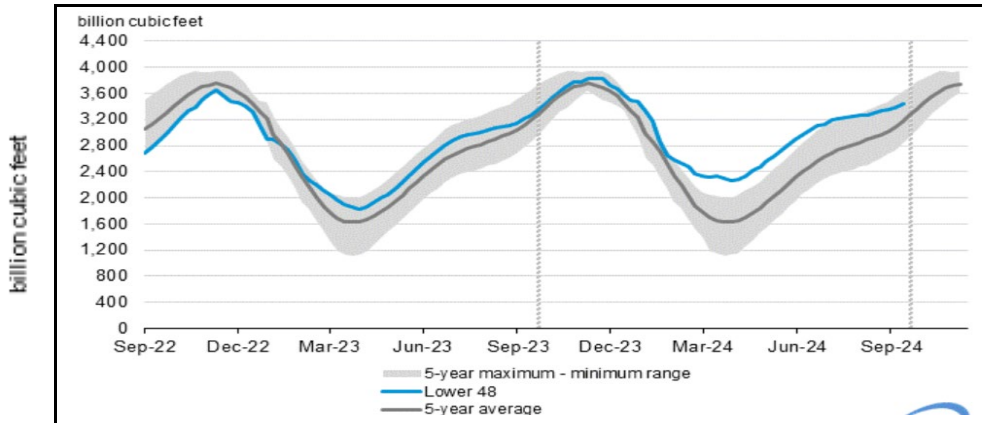
Mansfield Power & Gas
1025 Airport Pkwy
Gainesville, GA 30501
www.mansfield.energy

customer@mansfieldpowergas.com
Phone: (678) 207 - 3350

NATURAL GAS NEWS



WEEKLY GAS IN UNDERGROUND STORAGE WITH 5-YR RANGE



for week ending September 13, 2024 | Released: September 19, 2024 | Next Release: September 26, 2024

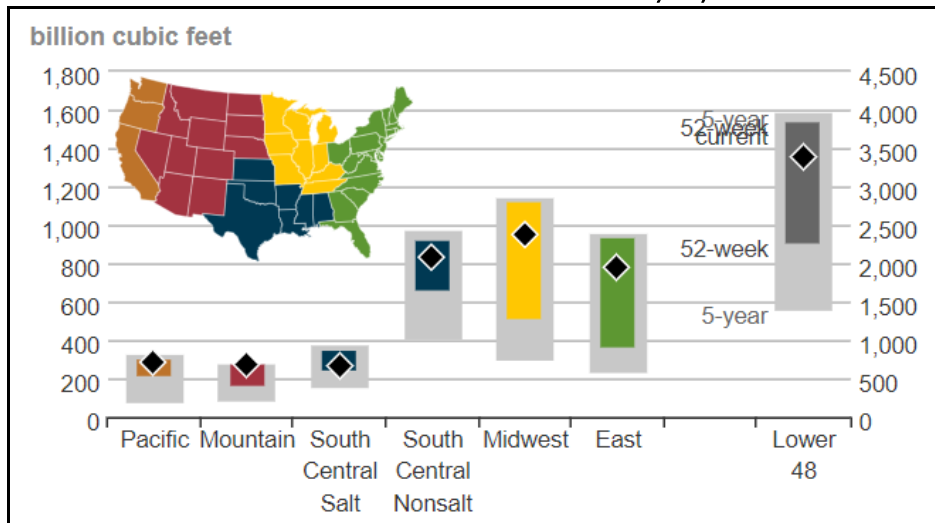
EIA Weekly Storage Actual and Surveys for

September 13, 2024

Released September 19, 2024

Range	50 to 60
S&P Global	55
FX Street	40
Investing.com	53

UNDERGROUND WORKING NAT GAS STORAGE AS OF 09/06/2024



Total Working Gas In Storage

3445 BCF

58 BCF (LAST WEEK)

194 BCF (LAST YEAR)

274 BCF (5-YEAR AVG)

U.S. Natural Gas Supply

Gas Week -

Average Daily Values (BCF/D):

Last Year (BCF/d)

Dry Production - 104.1

Total Supply - 109.8

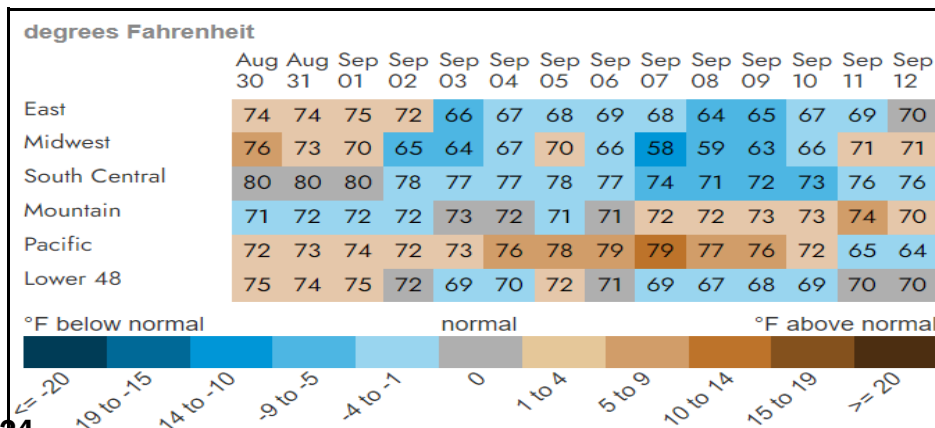
Last Week (BCF/d)

Dry Production - 102.2

Total Supply - 108.6

[Next Report: September 26]

REGIONAL AVG TEMPERATURES AND DEPARTURE FROM NORMAL



U.S. Natural Gas Demand

Gas Week -

Average Daily Values (BCF/D):

Last Year (BCF/d)

Power - 44.4

Total Demand - 101.0

Last Week (BCF/d)

Power - 42.1

Total Demand - 99.1

[Next Report: September 26]

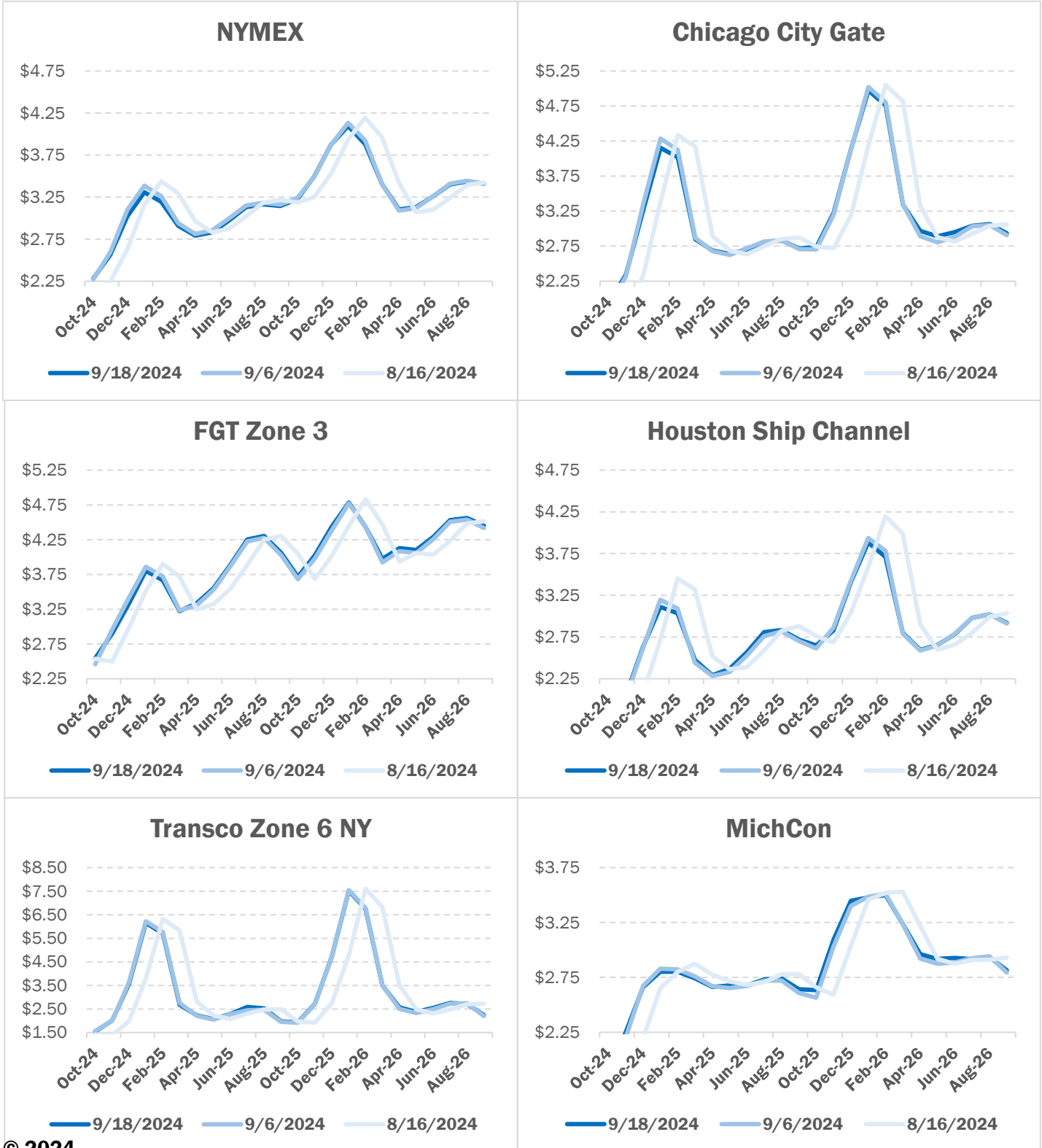
MANSFIELD EIA PREDICTION

55

NATURAL GAS NEWS



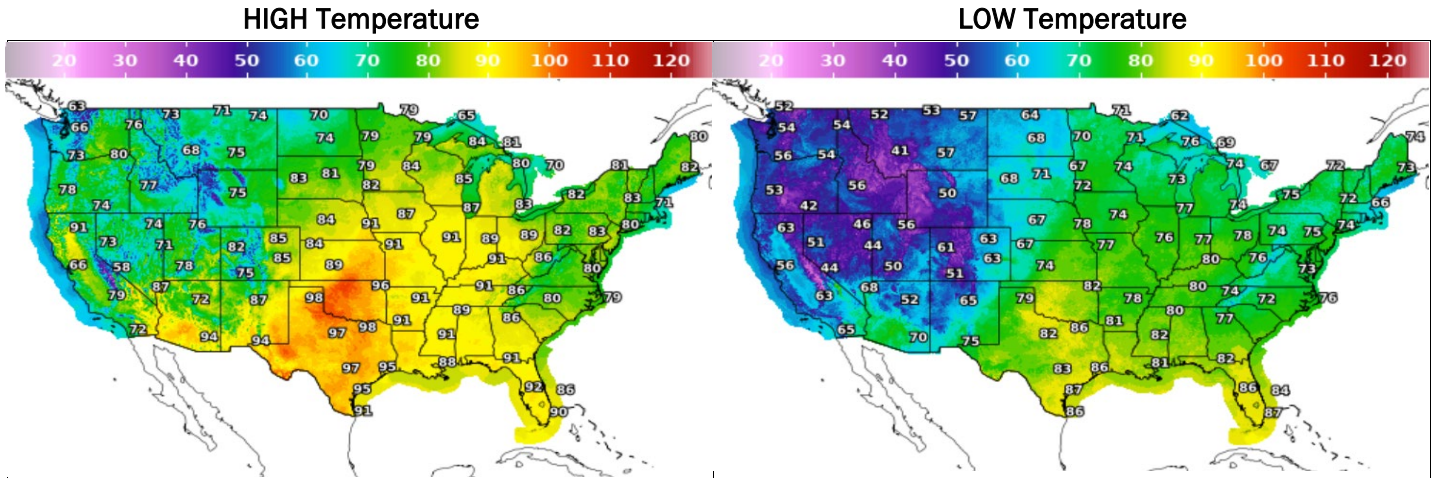
NATURAL GAS BASIS FUTURES



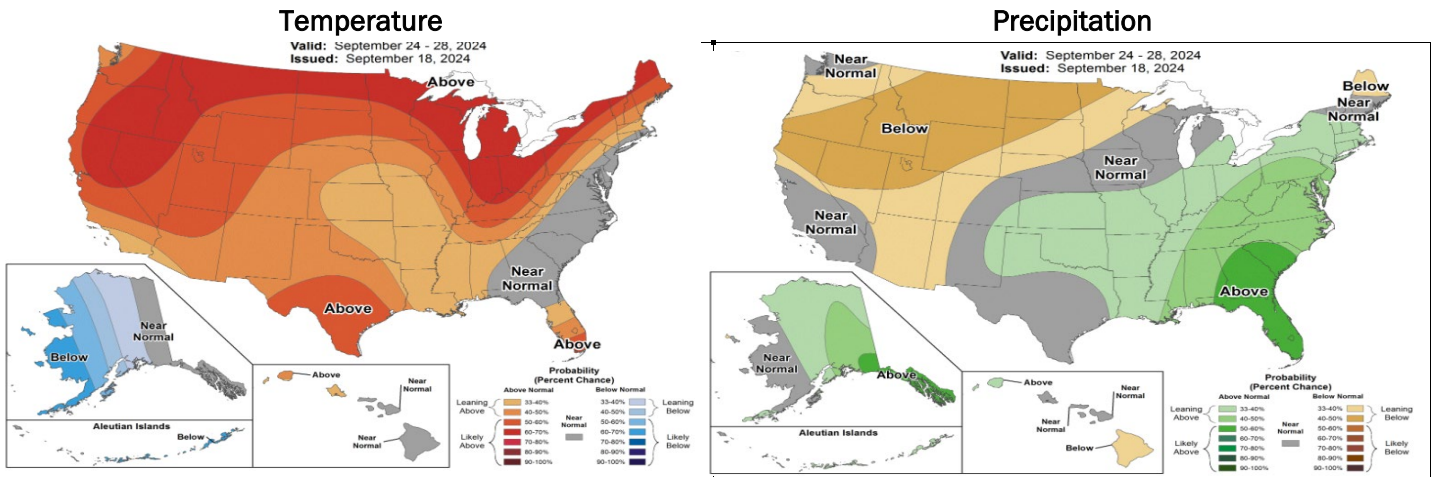
NATURAL GAS NEWS



WEATHER - HIGH / LOW TEMPERATURE - TOMORROW



WEATHER - 6 - 10 DAY OUTLOOK - NOAA



WEATHER - 8 - 14 DAY OUTLOOK - NOAA

