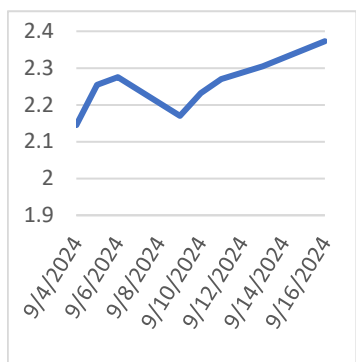


Tuesday, September 17, 2024

**Last Week's Prompt
NYMEX**



NYMEX NG Futures

Month	Close	Change
Oct-24	2.373	0.068
Nov-24	2.639	0.050
Dec-24	3.067	0.042
Jan-25	3.339	0.038
Feb-25	3.211	0.033
Mar-25	2.916	0.028
Apr-25	2.792	0.025
May-25	2.831	0.021
Jun-25	2.968	0.015
Jul-25	3.124	0.012
Aug-25	3.157	0.007
Sep-25	3.136	0.005
Oct-25	3.222	0.006
Nov-25	3.491	0.011
Dec-25	3.881	0.018
Jan-26	4.096	0.009
Feb-26	3.882	0.007
Mar-26	3.406	0.011
Apr-26	3.105	0.015
May-26	3.131	0.014
Jun-26	3.259	0.011
Jul-26	3.398	0.007
Aug-26	3.434	0.006
Sep-26	3.408	0.006
1 YR STRIP 2025	2.963 / 3.172	0.029 / 0.012

IN THE NEWS

Milder Weather & Supply Disruptions Create Tug-of-War

Natural gas futures hover near 50-day Moving Average, as traders weigh Hurricane Francine's impact and bearish weather forecasts. Support for natural gas sits at \$2.252, with resistance at \$2.482. A break above could signal a bullish trend reversal. Hurricane Francine disrupts Gulf production, keeping supply tight despite high inventory levels and bearish demand forecasts. Milder weather predictions could reduce natural gas demand, tempering the bullish sentiment driven by supply constraints. Natural gas futures show minimal movement on Monday, staying close to the key 50-day moving average at \$2.30. Traders are carefully evaluating the ongoing effects of Hurricane Francine against potentially bearish weather patterns. At 12:06 GMT, Natural Gas Futures are trading \$2.301, down \$0.004 or -0.17%. Support for natural ... For more info go to <https://tinyurl.com/53tuj9w4>

Texas natural gas pipeline explodes into flames

A natural liquid gas pipeline erupted near Houston on Monday, prompting authorities to evacuate homes and businesses as shelter-in-place orders covered multiple schools. Evacuation orders covered about 50 homes in Deer Park, where the fire originated, about 20 miles southeast of Houston. At least a few of the five residences nearest the blaze have been damaged, city officials said at a news conference. A responding firefighter from nearby Pasadena was injured near the fire, officials from the neighboring city of La Porte said in a statement. Details about the extent of the injury or the firefighter's condition were not available, and Pasadena fire officials did not immediately respond to a request for more information Monday. Evacuation orders covered nearly 1,000 homes and businesses in L... For more info go to <https://tinyurl.com/3sm7yvz6>

Storm Disruptions Support Prices, Bearish Trends Loom

Oil prices rose on Tuesday as the market focused on U.S. production disruptions caused by Hurricane Francine, which knocked 12% of crude and 16% of natural gas output in the Gulf of Mexico offline. Concerns over lower U.S. crude inventories and expectations of a Federal Reserve interest rate cut further bolstered prices. However, weak demand growth in China, the world's largest crude importer, has limited gains. China's refinery output dropped for the fifth consecutive month, adding caution to the market. Lower interest rates could support economic growth, potentially lifting oil and natural gas demand. Natural Gas (NG) is trading at \$2.391, up a slight 0.08%, showing some resilience above its pivot point at \$2.34. Immediate resistance lies just ahead at \$2.41, and a move above this could ... For more info go to <https://tinyurl.com/mt2futb9>

**Prompt Natural Gas (NG)
Daily Sentiment**

NEUTRAL



RESISTANCE
2.681 & 2.723
SUPPORT
2.572 & 2.505

NATURAL GAS

Futures	Close
NG	\$2.373
Volume	65,206
Open Int.	139,098

Contact Us



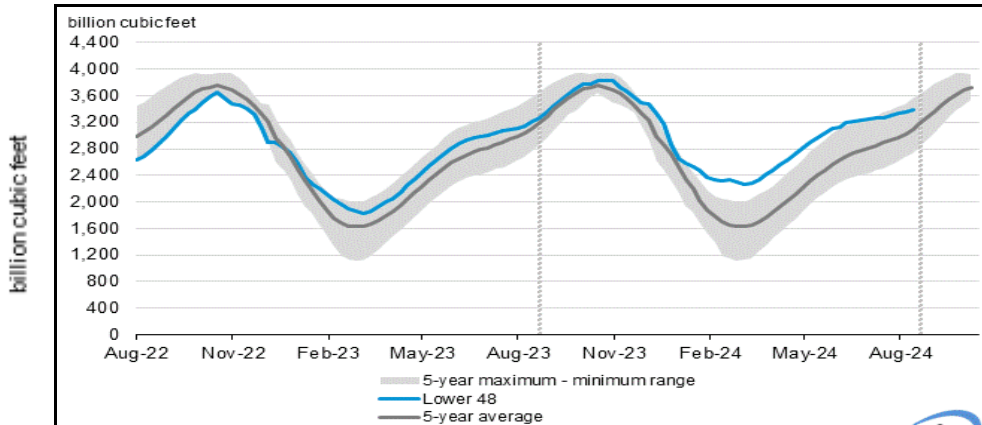
Mansfield Power & Gas
1025 Airport Pkwy
Gainesville, GA 30501
www.mansfield.energy

customer@mansfieldpowergas.com
Phone: (678) 207 - 3350

NATURAL GAS NEWS



WEEKLY GAS IN UNDERGROUND STORAGE WITH 5-YR RANGE



for week ending September 06, 2024 | Released: September 12, 2024 | Next Release: September 19, 2024

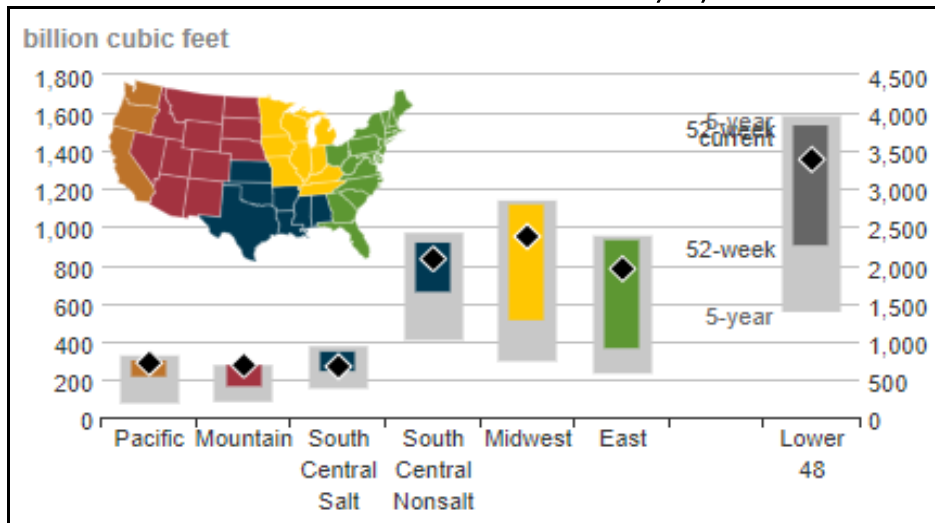
EIA Weekly Storage Actual and Surveys for

September 6, 2024

Released September 12, 2024

Range	30 to 70
S&P Global	50
FX Street	40
Investing.com	40

UNDERGROUND WORKING NAT GAS STORAGE AS OF 09/06/2024



Total Working Gas In Storage

3387 BCF

40 BCF (LAST WEEK)

198 BCF (LAST YEAR)

296 BCF (5-YEAR AVG)

U.S. Natural Gas Supply

Gas Week -

Average Daily Values (BCF/D):

Last Year (BCF/d)

Dry Production - 104.1

Total Supply - 109.8

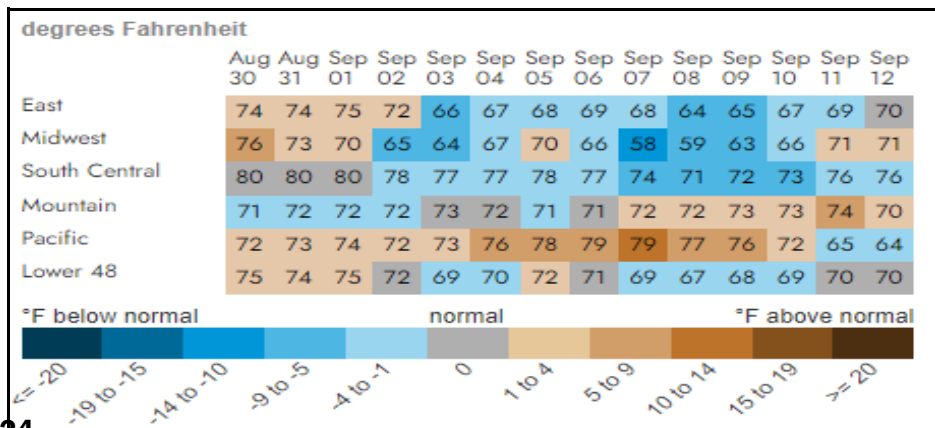
Last Week (BCF/d)

Dry Production - 102.2

Total Supply - 108.6

[Next Report: September 19]

REGIONAL AVG TEMPERATURES AND DEPARTURE FROM NORMAL



U.S. Natural Gas Demand

Gas Week -

Average Daily Values (BCF/D):

Last Year (BCF/d)

Power - 44.4

Total Demand - 101.0

Last Week (BCF/d)

Power - 42.1

Total Demand - 99.1

[Next Report: September 19]

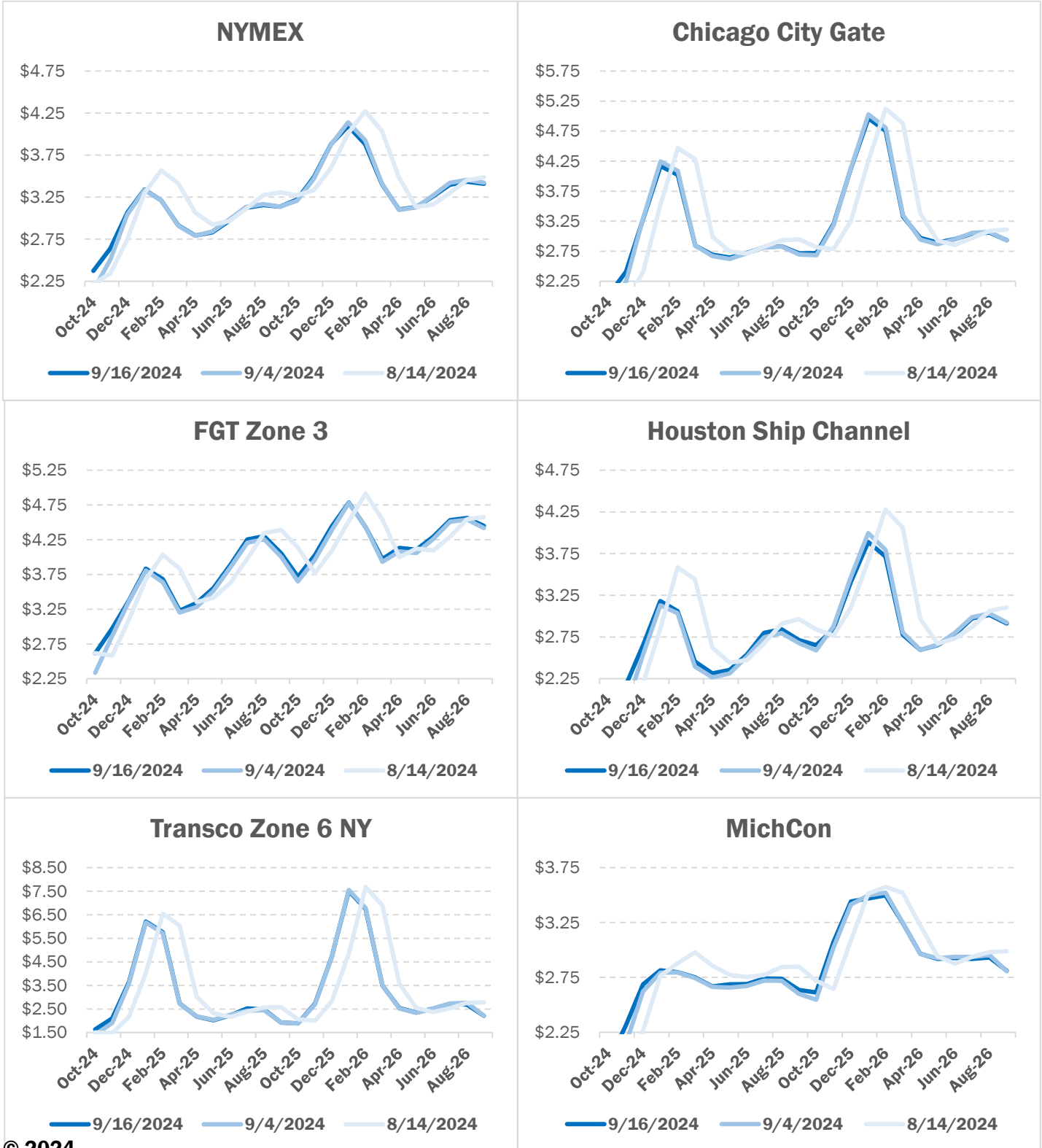
MANSFIELD EIA PREDICTION

35

NATURAL GAS NEWS



NATURAL GAS BASIS FUTURES



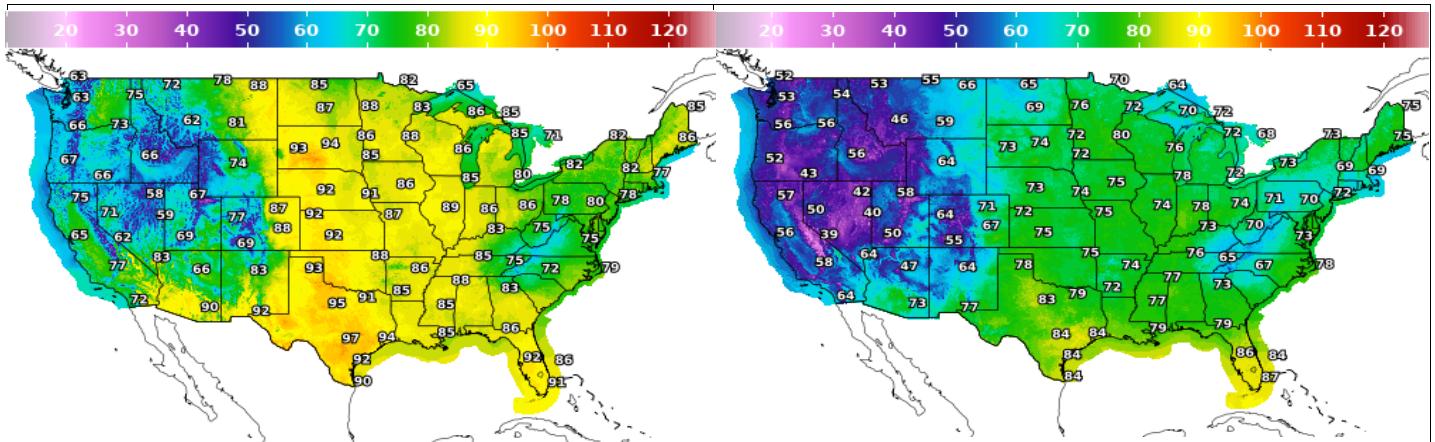
NATURAL GAS NEWS



WEATHER - HIGH / LOW TEMPERATURE - TOMORROW

HIGH Temperature

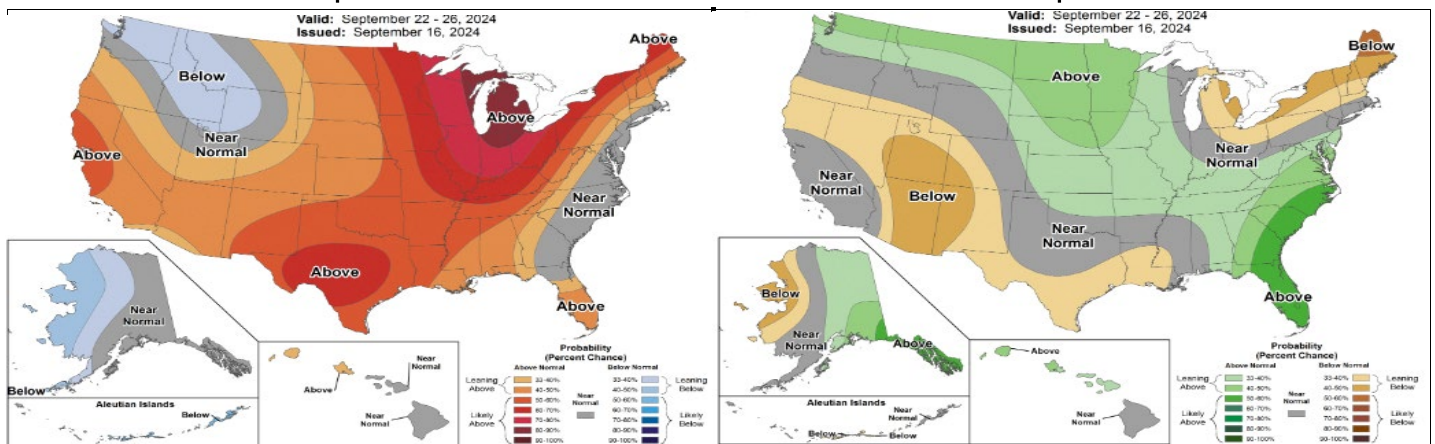
LOW Temperature



WEATHER - 6 - 10 DAY OUTLOOK - NOAA

Temperature

Precipitation



WEATHER - 8 - 14 DAY OUTLOOK - NOAA

Temperature

Precipitation

