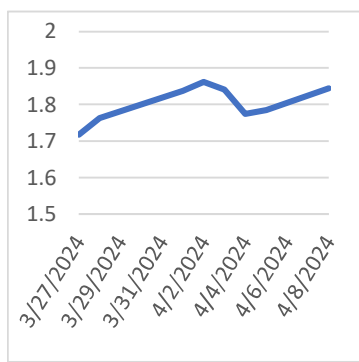


Tuesday, April 9, 2024

### Last Week's Prompt NYMEX



### NYMEX NG Futures

Month	Close	Change
May-24	1.844	0.059
Jun-24	2.051	0.041
Jul-24	2.390	0.051
Aug-24	2.493	0.056
Sep-24	2.483	0.051
Oct-24	2.571	0.051
Nov-24	2.948	0.047
Dec-24	3.464	0.047
Jan-25	3.742	0.044
Feb-25	3.575	0.042
Mar-25	3.199	0.024
Apr-25	2.994	0.026
May-25	3.056	0.025
Jun-25	3.232	0.026
Jul-25	3.416	0.028
Aug-25	3.456	0.028
Sep-25	3.419	0.027
Oct-25	3.469	0.028
Nov-25	3.791	0.025
Dec-25	4.227	0.024
Jan-26	4.462	0.020
Feb-26	4.263	0.018
Mar-26	3.727	0.022
Apr-26	3.342	0.020
1 YR STRIP	2.813	0.045
2025	3.465	0.025

### IN THE NEWS

#### Natural Gas News: Resilient Performance Amid Bearish Factors

Natural gas futures are exhibiting minimal movement on Monday, indicating uncertainty amidst consolidation just above a significant long-term low. This price action reflects a blend of short-term weather demand outlook and a longer-term anticipation of production cuts leading to reduced stockpiles. At 12:48, Natural Gas Futures are trading \$1.790, up \$0.005 or +0.28%. Despite a myriad of bearish factors, the U.S. natural gas market showed resilience last week, with futures posting a modest uptick. The primary driver was the expectation of sustained low output in the coming weeks, attributed to ongoing declines in gas rig counts. Settlement for US Natural Gas futures stood at \$1.785, marking a 1.25% increase. Notably, there was a significant decline in natural gas production, with average output in the Lower 48 sta... For more info go to <https://tinyurl.com/yb5havn8>

#### Massive fuel restrictions underline Japan's LNG supply vulnerability

Recent massive-scale fuel restrictions at JERA's multiple thermal power plants in Tokyo Bay have underlined Japan's vulnerability once again in facing LNG shortages in a short time period from a sharp demand increase and delays in ship arrivals. JERA, Japan's largest power generation company, imposed rare massive-scale fuel restrictions affecting as much as nearly 7 GW of a gas-fired power generation capacity in Tokyo Bay over March 27-29, as the country's LNG inventory fell to the lowest level since January 2021. JERA's fuel restrictions-led capacity outage rose to as much as 6.72 GW on March 29, from 4.98 GW on March 28 and 5.95 GW on March 27 as a result of weather and oceanic phenomenon, the company said in filings to the Hatsuden Joho Kokai System. JERA imposed the fuel restrictions M... For more info go to <https://tinyurl.com/3zmemj9w>

#### Berkeley's first-in-the-nation natural gas ban is dead.

Four years ago, Berkeley made history when it became the first city in the United States to ban natural gas hookups in new buildings. It was a natural step for the famously progressive California community, which was an early adopter of curbside recycling in the 1970s, banned styrofoam in 1988, and more recently led the charge to outlaw single-use packaging and plastics. But today the ban is dead in the water, after a lawsuit brought by a restaurant trade group challenged its legality, tying the ban's enforcement up in court for years. Last month, the city finally gave in and began the process of repealing it. For a moment, the news appeared devastating for efforts to transition away from fossil fuels. But even without the historic ban, local climate advocates and restaurant owners are ima... For more info go to <https://tinyurl.com/yk6nx7sa>

### Prompt Natural Gas (NG) Daily Sentiment

BEARISH



RESISTANCE  
1.881 & 1.917  
SUPPORT  
1.777 & 1.709

### NATURAL GAS

Futures	Close
NG	\$1.844
Volume	78,463
Open Int.	296,491

### Contact Us



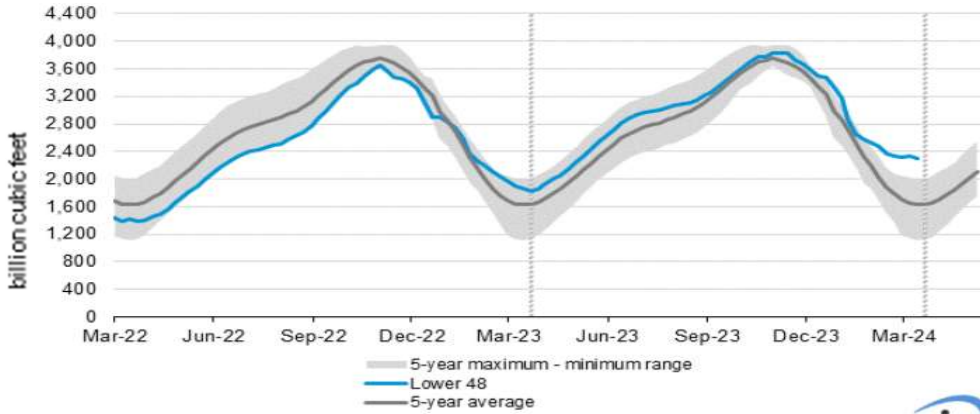
Mansfield Energy Corp  
1025 Airport Pkwy  
Gainesville, GA 30501  
[www.mansfield.energy](http://www.mansfield.energy)

info@mansfieldoil.com  
Phone: (800) 695 - 6626

# NATURAL GAS NEWS



## WEEKLY GAS IN UNDERGROUND STORAGE WITH 5-YR RANGE



for week ending March 29, 2024 | Released: April 04, 2024 | Next Release: April 11, 2024

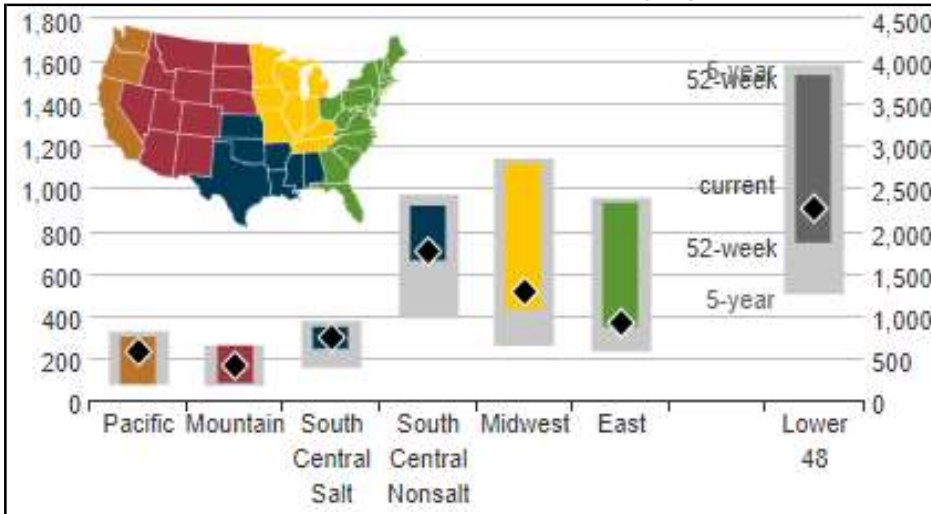
### EIA Weekly Storage Actual and Surveys for

March 29, 2024

Released April 04, 2024

Range	-35 to -45
S&P Global	-39
FX Street	-38
Investing.com	-42

## UNDERGROUND WORKING NAT GAS STORAGE AS OF 03/29/2024



### Total Working Gas In Storage

**2259 BCF**

-37 BCF (LAST WEEK)

422 BCF (LAST YEAR)

633 BCF (5-YEAR AVG)

### U.S. Natural Gas Supply

#### Gas Week -

Average Daily Values (BCF/D):

Last Year (BCF/d)

Dry Production - 101.8

Total Supply - 106.3

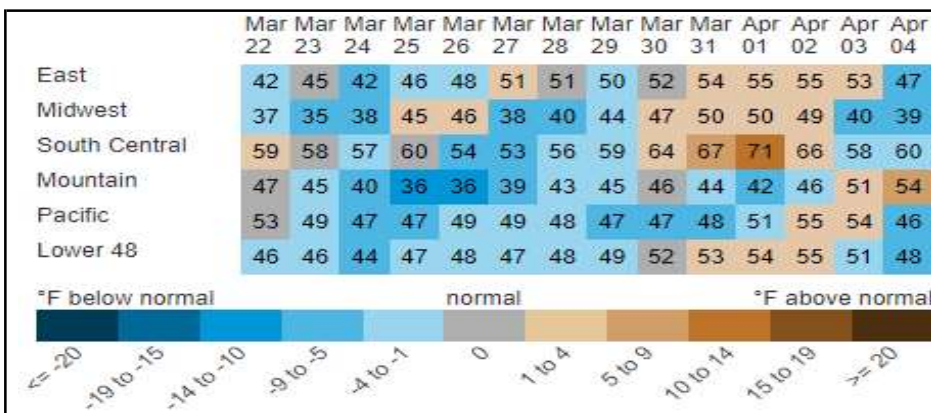
Last Week (BCF/d)

Dry Production - 101.0

Total Supply - 105.8

[Next Report: April 11]

## REGIONAL AVG TEMPERATURES AND DEPARTURE FROM NORMAL



### U.S. Natural Gas Demand

#### Gas Week -

Average Daily Values (BCF/D):

Last Year (BCF/d)

Power - 28.1

Total Demand - 108.3

Last Week (BCF/d)

Power - 30.9

Total Demand - 1114.0

[Next Report: April 11]

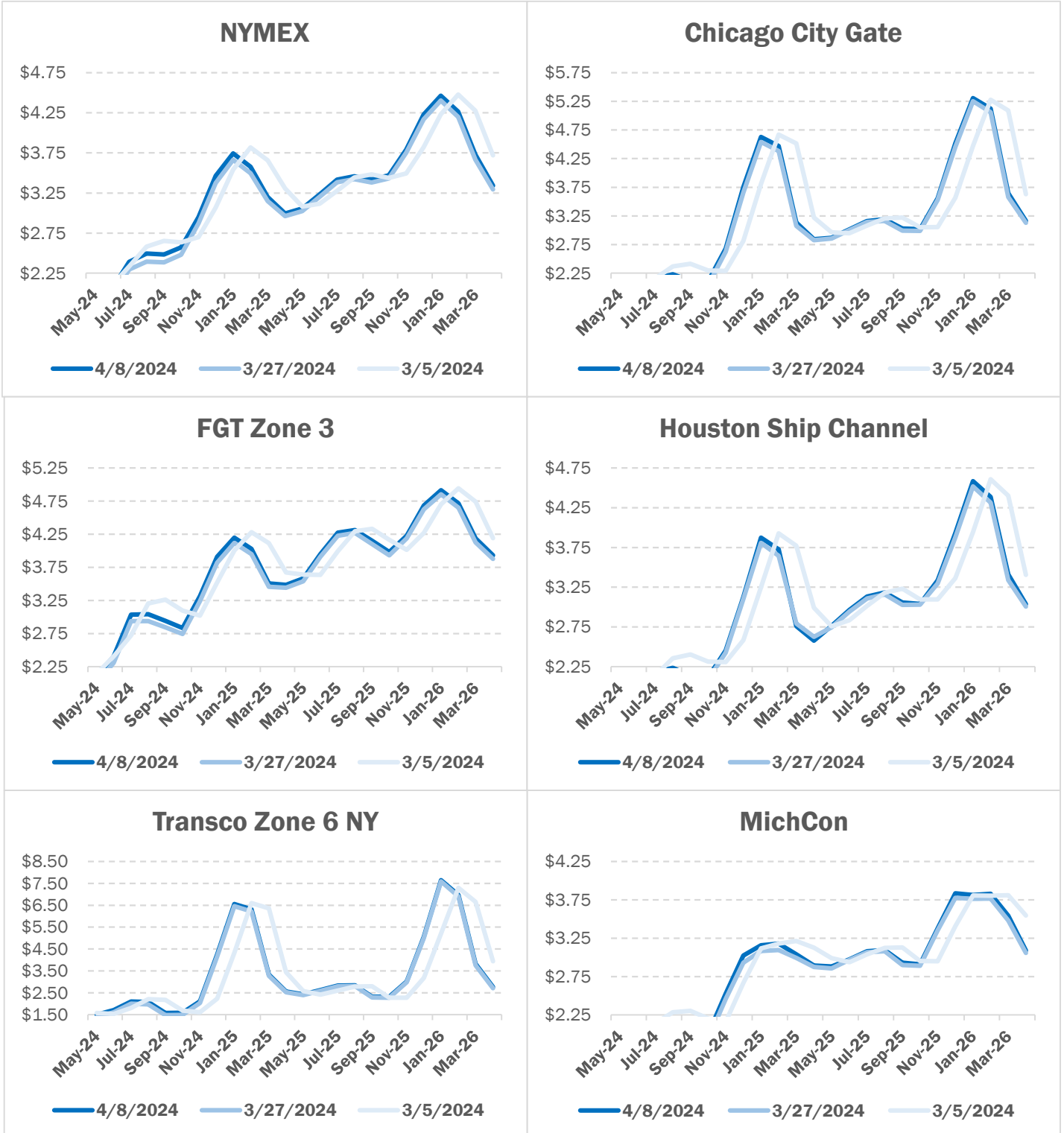
MANSFIELD EIA PREDICTION

**-43**

# NATURAL GAS NEWS



## NATURAL GAS BASIS FUTURES

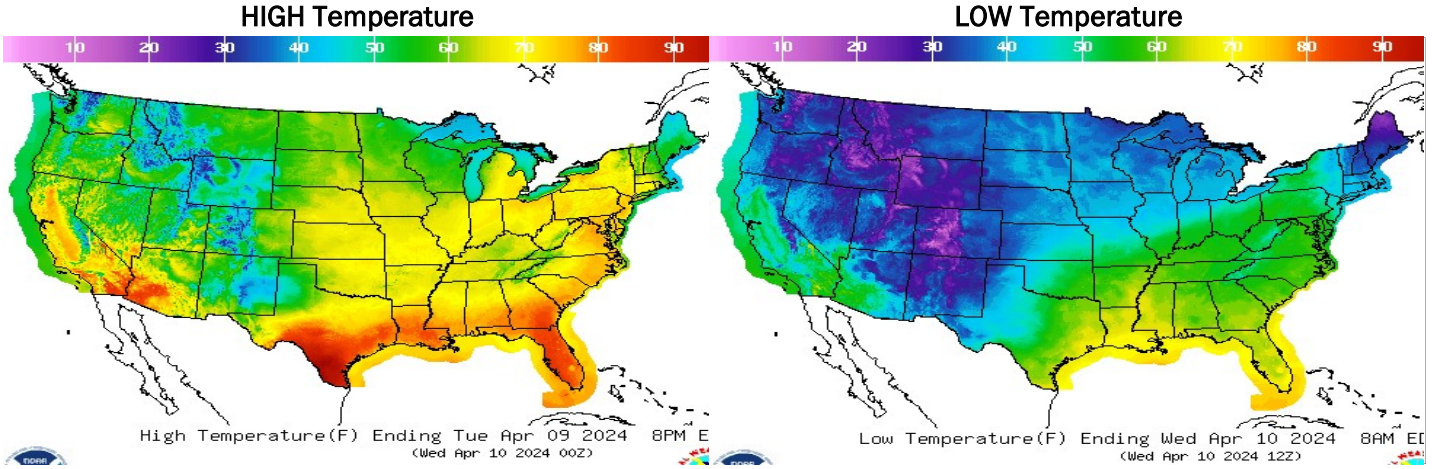




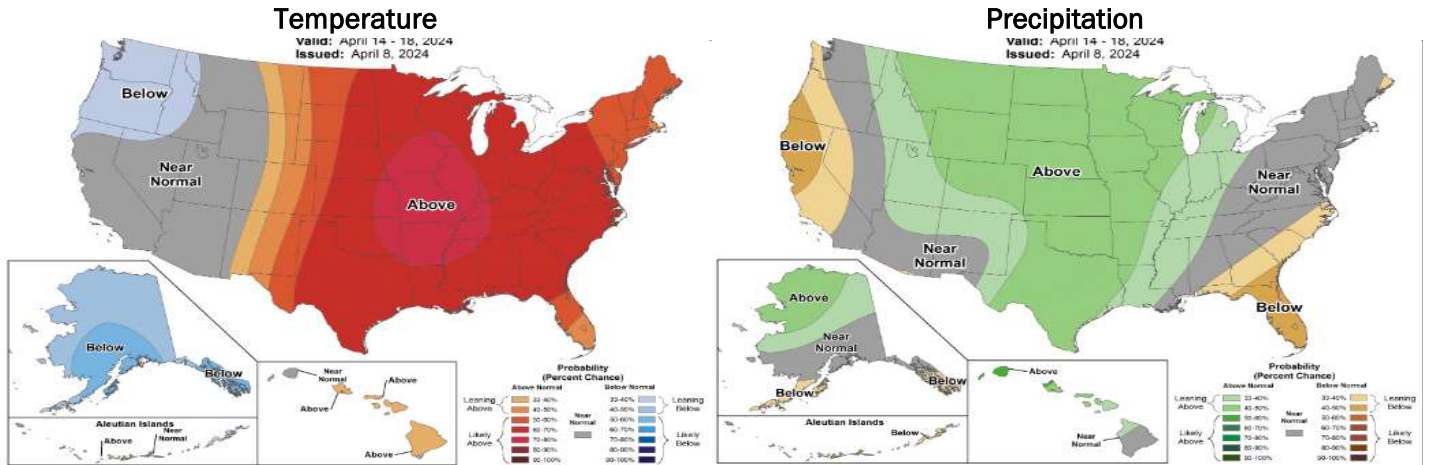
# NATURAL GAS NEWS



## WEATHER - HIGH / LOW TEMPERATURE - TOMORROW



## WEATHER - 6 - 10 DAY OUTLOOK - NOAA



## WEATHER - 8 - 14 DAY OUTLOOK - NOAA

