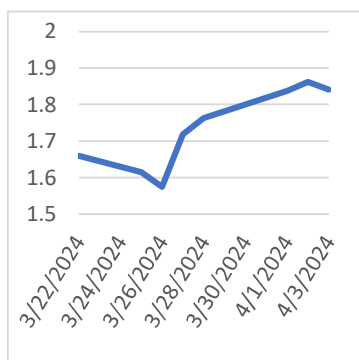


Thursday, April 4, 2024

### Last Week's Prompt NYMEX



### NYMEX NG Futures

Month	Close	Change
May-24	1.841	-0.021
Jun-24	2.067	-0.038
Jul-24	2.386	-0.044
Aug-24	2.494	-0.046
Sep-24	2.487	-0.045
Oct-24	2.573	-0.046
Nov-24	2.963	-0.046
Dec-24	3.471	-0.040
Jan-25	3.745	-0.042
Feb-25	3.574	-0.033
Mar-25	3.218	-0.030
Apr-25	3.001	-0.038
May-25	3.066	-0.036
Jun-25	3.228	-0.032
Jul-25	3.399	-0.026
Aug-25	3.445	-0.023
Sep-25	3.410	-0.018
Oct-25	3.463	-0.014
Nov-25	3.789	-0.019
Dec-25	4.216	-0.020
Jan-26	4.463	-0.012
Feb-26	4.262	-0.010
Mar-26	3.724	-0.008
Apr-26	3.342	-0.007
1 YR STRIP	2.818	-0.039
2025	3.463	-0.023

### IN THE NEWS

#### Natural Gas News: Flat Movement

The U.S. natural gas market is nearly flat on Thursday traders await the latest government storage report. Key factors influencing this trend include varying weather conditions and expected storage changes. At 13:17 GMT, U.S. natural gas futures are trading \$1.848, up \$0.007 or +0.38%. The anticipated storage report, projecting a decrease of 38 to 43 billion cubic feet (Bcf), comes against a backdrop of cooler weather in most parts of the U.S., with exceptions in regions like the Ohio Valley, Northeast, and Florida.

NatGasWeather forecasts from April 4-10 indicate a mix of high demand due to cooler temperatures in the Great Lakes and East, and lower demand elsewhere due to milder weather. Wednesday's market activity showed a slight dip in U.S. natural gas futures by about 1%, influenced by a smaller-than-expected ... For more info go to <https://tinyurl.com/5xr7xucf>

#### Appalachia gas production slowdown lifts cash

The slowdown in Appalachian gas production this spring is already easing pressure on cash basis prices. This summer though, traders are betting on wider spreads there as Henry Hub gas climbs back above \$2. Over the past eight weeks, gas production from the Marcellus and Utica shale has fallen sharply. In April, combined in-basin production has averaged just over 33.5 Bcf/d – down from a near record-high average around 35.7 Bcf/d as recently as February, data from S&P Global Commodity Insights showed. The precipitous slowdown comes on the heels of a tough winter for producers. In mid-February, cash prices at Appalachia's benchmark hub, Eastern Gas South, briefly drifted below \$1.20/MMBtu on several trading days and averaged less than \$1.35 during the full month, putting pressure on producer... For more info go to <https://tinyurl.com/te6p626>

#### Natural Gas Price Forecast: Faces Resistance at 50-Day MA

Natural gas managed to recapture the 50-Day MA, currently at 1.87, earlier in Wednesday's session before encountering resistance following the day's high of 1.91. It continues to trade near the lows of the day and below the 50-Day line at the time of this writing. Therefore, the close will likely be below the 50-Day line indicating that the breakout above the line has failed so far. And it sets up a short-term shooting star bearish candlestick pattern for today. A subsequent drop below today's low, currently at 1.84, will provide a short-term bearish signal that, at the least could see a test of support around the long-term downtrend line. There have been two prior daily closes above the long-term downtrend line since the price of natural gas rallied above it on Monday. The next sign of st... For more info go to <https://tinyurl.com/yk6nx7sa>

### Prompt Natural Gas (NG) Daily Sentiment

BEARISH



RESISTANCE  
1.886 & 1.931  
SUPPORT  
1.816 & 1.791

### NATURAL GAS

Futures	Close
NG	\$1.841
Volume	57,008
Open Int.	395,415

### Contact Us



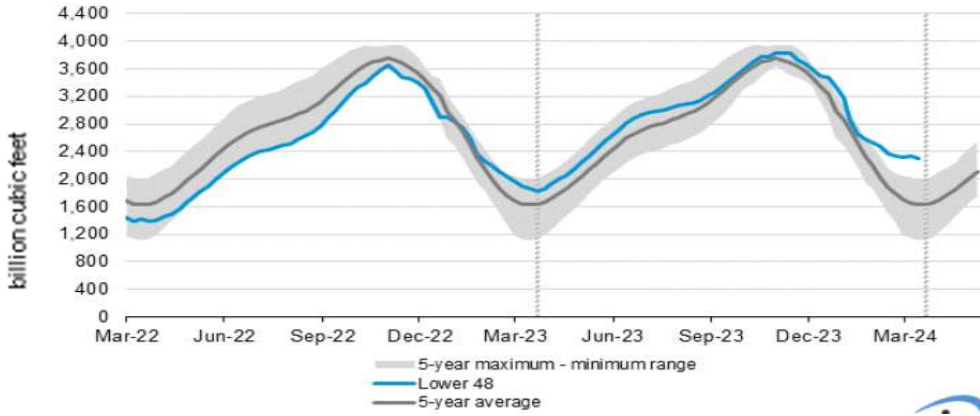
Mansfield Energy Corp  
1025 Airport Pkwy  
Gainesville, GA 30501  
[www.mansfield.energy](http://www.mansfield.energy)

info@mansfieldoil.com  
Phone: (800) 695 - 6626

# NATURAL GAS NEWS



## WEEKLY GAS IN UNDERGROUND STORAGE WITH 5-YR RANGE



for week ending March 29, 2024 | Released: April 04, 2024 | Next Release: April 11, 2024

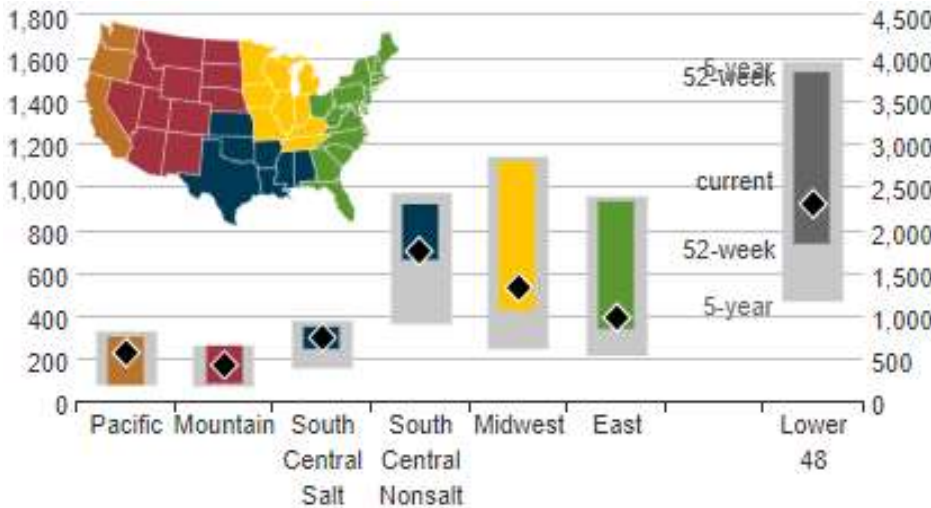
### EIA Weekly Storage Actual and Surveys for

March 29, 2024

Released April 04, 2024

Range	-35 to -45
S&P Global	-39
FX Street	-38
Investing.com	-42

## UNDERGROUND WORKING NAT GAS STORAGE AS OF 03/22/2024



### Total Working Gas In Storage

**2259 BCF**

- 37 BCF (LAST WEEK)
- 422 BCF (LAST YEAR)
- 633 BCF (5-YEAR AVG)

### U.S. Natural Gas Supply

#### Gas Week -

Average Daily Values (BCF/D):

Last Year (BCF/d)

Dry Production - 101.9

Total Supply - 106.1

Last Week (BCF/d)

Dry Production - 101.4

Total Supply - 105.3

[Next Report: April 04]

### U.S. Natural Gas Demand

#### Gas Week -

Average Daily Values (BCF/D):

Last Year (BCF/d)

Power - 28.8

Total Demand - 106.8

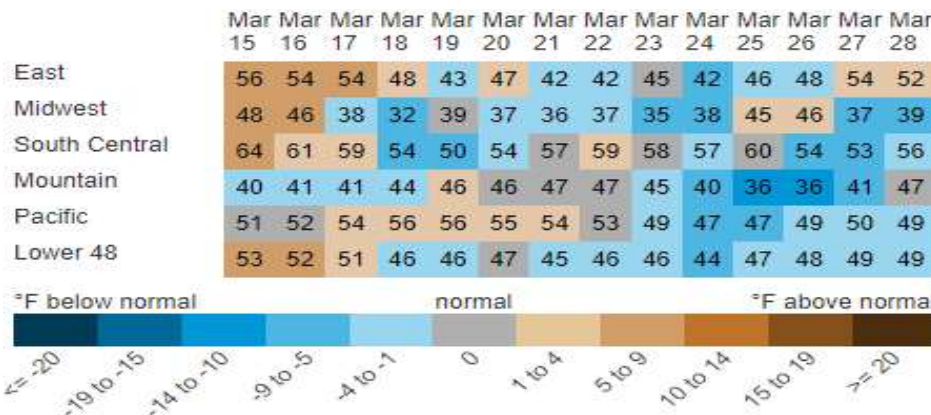
Last Week (BCF/d)

Power - 30.6

Total Demand - 107.7

[Next Report: April 04]

## REGIONAL AVG TEMPERATURES AND DEPARTURE FROM NORMAL



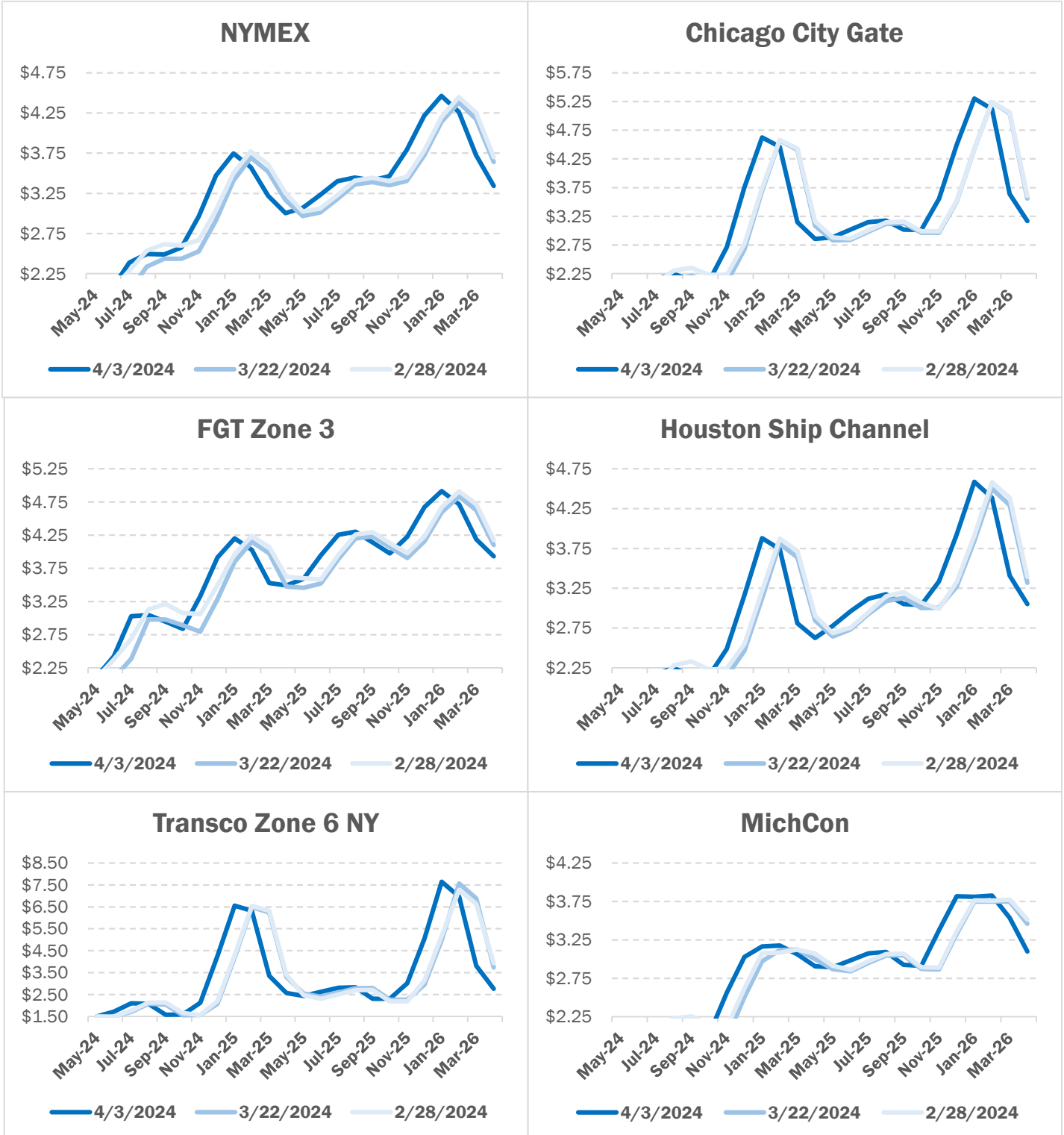
MANSFIELD EIA PREDICTION

**-43**

# NATURAL GAS NEWS



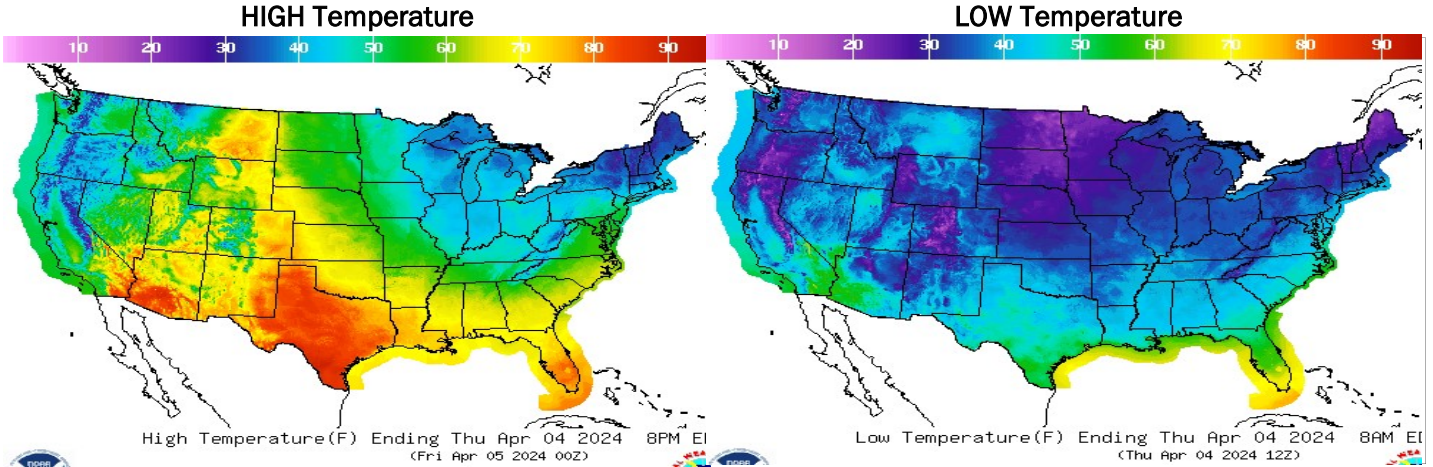
## NATURAL GAS BASIS FUTURES



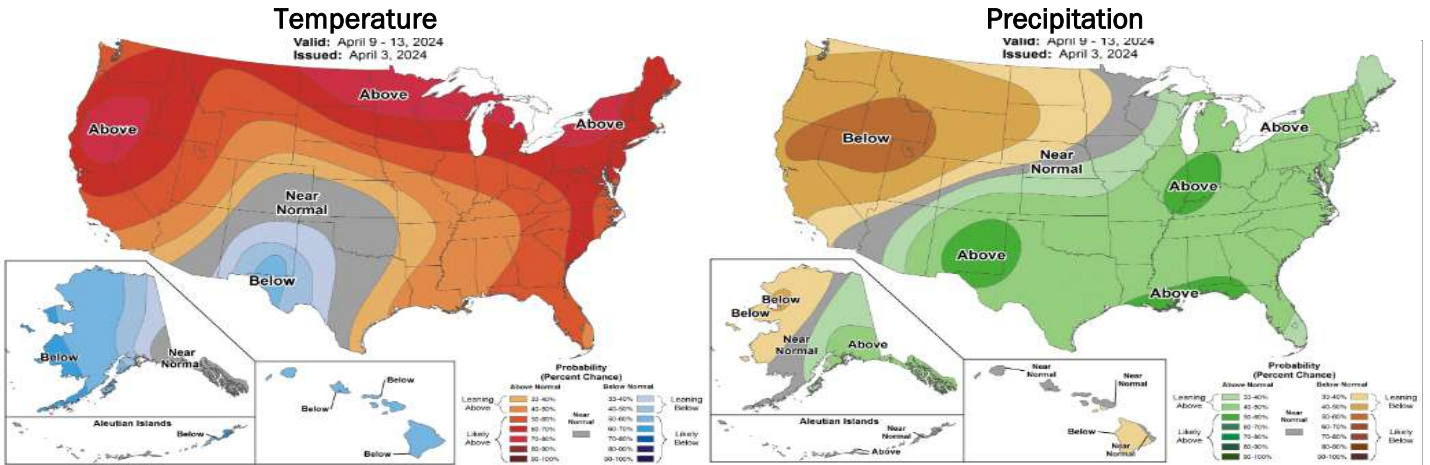
# NATURAL GAS NEWS



## WEATHER - HIGH / LOW TEMPERATURE - TOMORROW



## WEATHER - 6 - 10 DAY OUTLOOK - NOAA



## WEATHER - 8 - 14 DAY OUTLOOK - NOAA

